

# Overview of Class Size and Composition in British Columbia Public Schools 2012/13

## School District 044 North Vancouver

These class size data are current as of October 15, 2012 and have been verified by school districts.

---

#### **PLEASE NOTE**

The Ministry makes small and continuous improvements to the quality of its data. Sometimes these changes result in differences from previously published reports. The data in this report are the most accurate data available at time of publication.

Ministry reports are available at <http://www.bced.gov.bc.ca/reporting/>

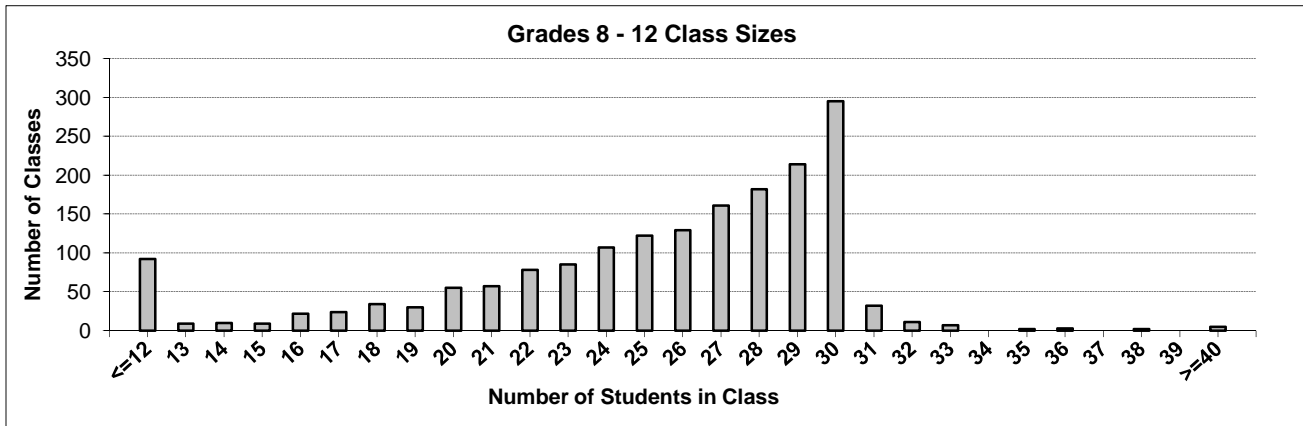
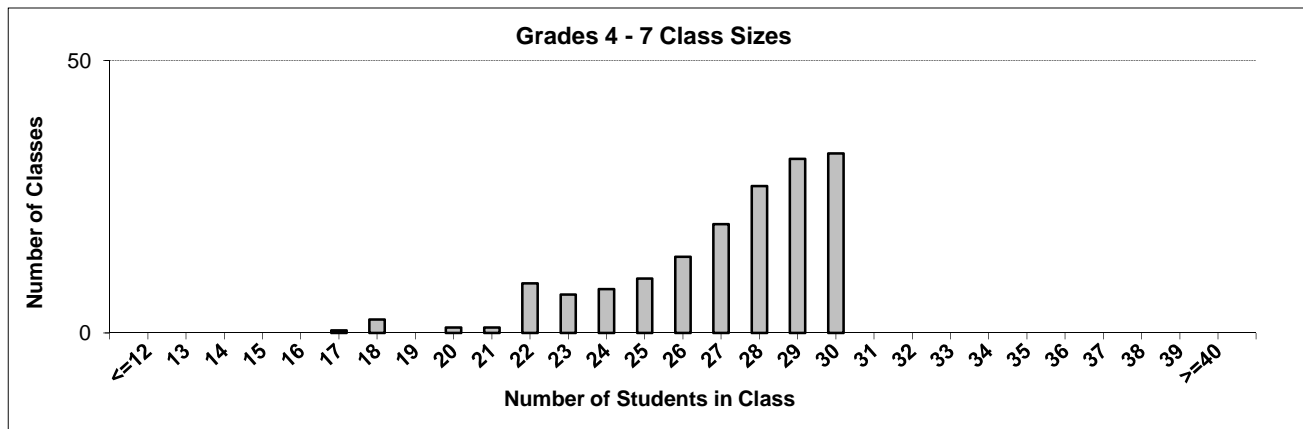
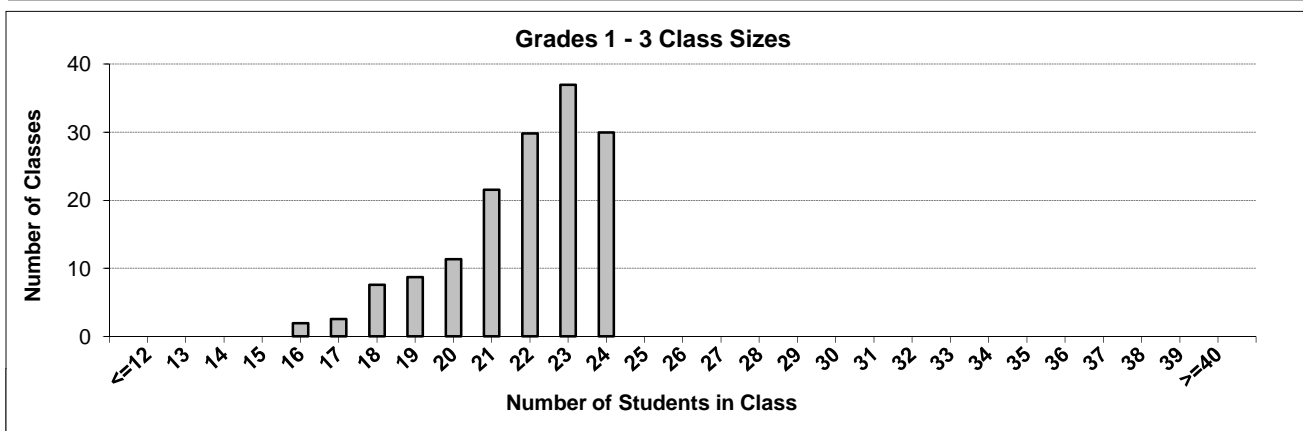
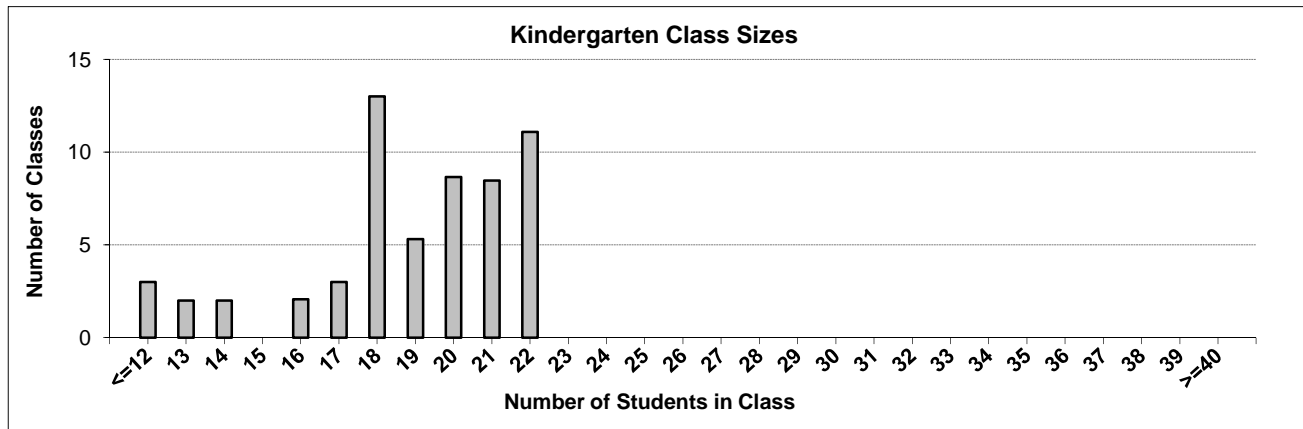
Contact the Business Intelligence Unit at [educ.reportingunit@gov.bc.ca](mailto:educ.reportingunit@gov.bc.ca)

---

# District Class Sizes

## 044 North Vancouver

Source: Class size data collection (as of October 15) from standard BC public schools.



---

## District - Average Class Size

---

### 044 North Vancouver

Source: Class size data collection (as of October 15) from standard BC public schools.

District - Average Class Size	Kindergarten	Grade 1 - 3	Grade 4 - 7	Grade 8 - 12
	18.8	21.8	27.1	25.1

Province - Average Class Size	Kindergarten	Grade 1 - 3	Grade 4 - 7	Grade 8 - 12
	19.0	21.1	25.4	23.3

Number of Reported Classes with Assigned Education Assistants	618
---	-----

Number of Reported Schools in District	31
--	----

Number of Reported Classes in District	2,151
--	-------

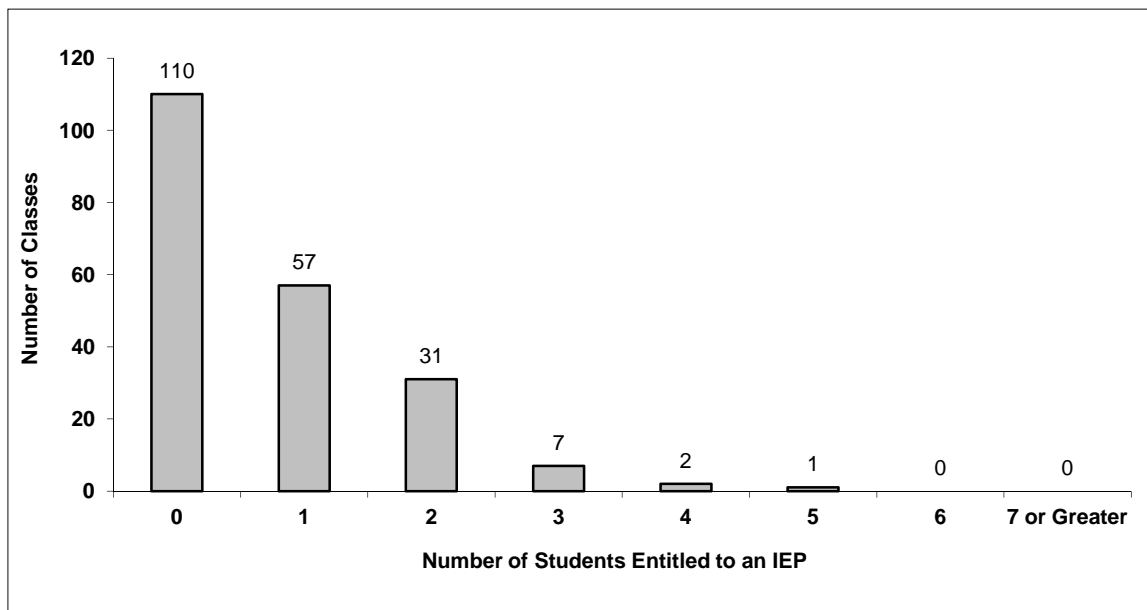
Number of Reported Classes in District with more than 30 Students	62
---	----

# District - Students Entitled to an Individual Education Plan (IEP)

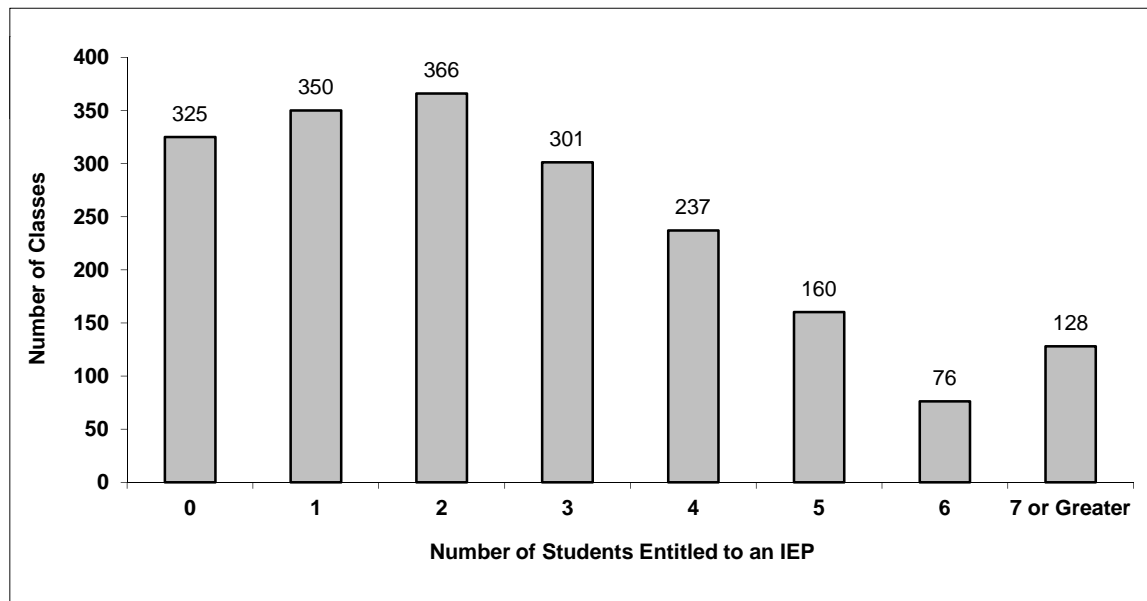
## 044 North Vancouver

Source: Class size data collection (as of October 15) from standard BC public schools.

Grades K-3 - Number of Classes in District with 'X' Number of Students Entitled to an IEP



Grades 4-12 - Number of Classes in District with 'X' Number of Students Entitled to an IEP

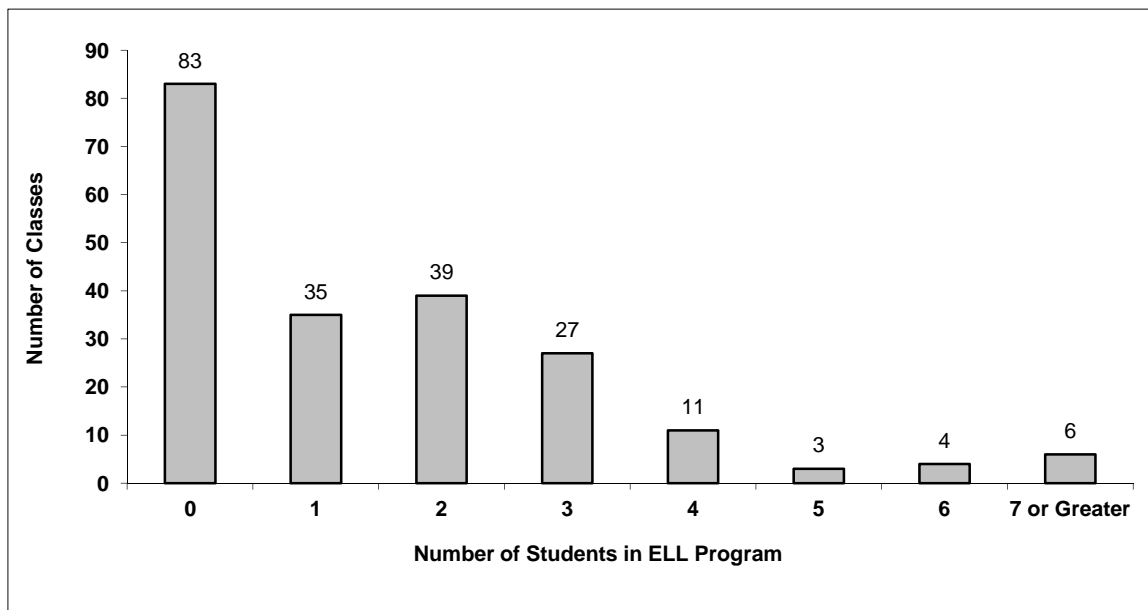


# District - English Language Learners (ELL)

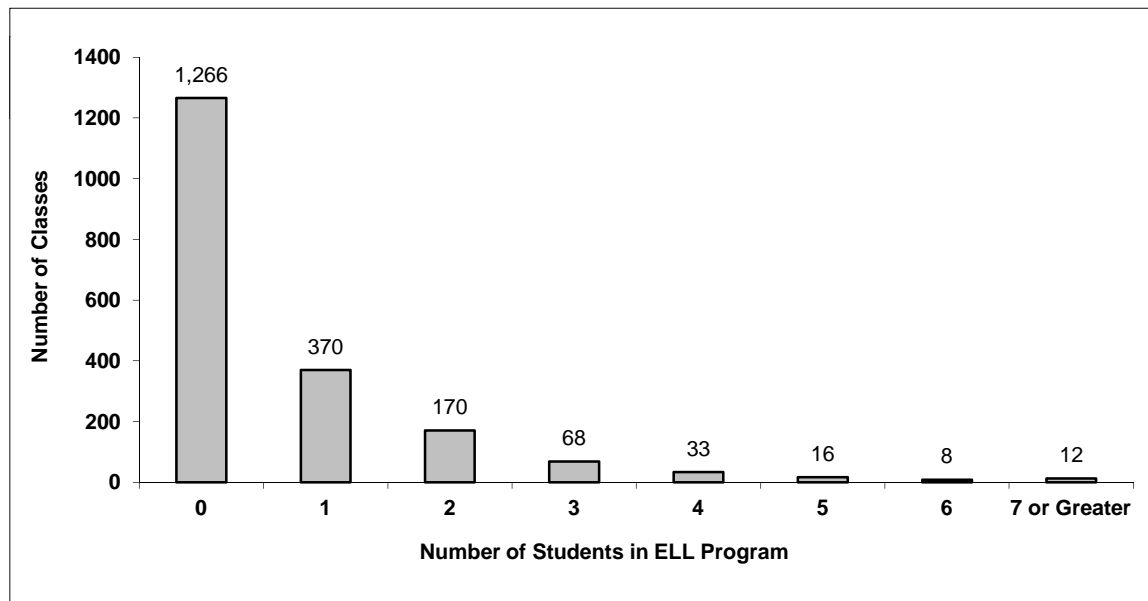
## 044 North Vancouver

Source: Class size data collection (as of October 15) from standard BC public schools.

Grades K-3 - Number of Classes in District with 'X' Number of ELL



Grades 4-12 - Number of Classes in District with 'X' Number of ELL



## 044 North Vancouver - Average Class Size by School

Source: Class size data collection (as of October 15) from standard BC public schools.

Ministry Code	School Name	Kindergarten	Grade 1 - 3	Grade 4 - 7	Grade 8 - 12
04444022	Argyle Secondary	-	-	-	26.1
04444041	Blueridge Elementary	18.5	22.0	27.4	-
04444043	Boundary Elementary	21.5	20.2	26.8	-
04444024	Braemar Elementary	21.6	22.6	27.1	-
04444037	Brooksbank Elementary	18.7	22.8	28.4	-
04444014	Canyon Heights Elementary	20.0	21.2	28.6	-
04444008	Capilano Elementary	17.7	22.0	28.3	-
04444023	Carisbrooke Elementary	20.5	23.6	27.6	-
04444036	Carson Graham Secondary	-	-	-	24.3
04444027	Cleveland Elementary	17.7	21.3	27.3	-
04444049	Cove Cliff Elementary	18.0	22.9	27.1	-
04444048	Dorothy Lynas Elementary	20.0	21.2	28.0	-
04444017	Eastview Elementary	18.0	19.3	28.4	-
04444025	Handsworth Secondary	-	-	-	25.8
04444011	Highlands Elementary	20.4	22.8	28.6	-
04444034	Larson Elementary	21.0	21.9	26.1	-
04444001	Lynn Valley Elementary	21.5	23.3	28.7	-
04444046	Lynnmour Elementary School	19.0	17.4	21.0	-
04444031	Montroyal Elementary	13.0	23.4	28.4	-
04444013	Norgate Community Elementary	18.0	21.1	21.6	-
04444005	Queen Mary Elementary at Cloverley Site	18.0	21.8	24.7	-
04444016	Queensbury Elementary	14.0	20.6	26.1	-
04444003	Ridgeway Elementary	21.3	23.2	27.9	-
04444029	Ross Road Elementary	21.3	22.4	27.1	-
04444047	Seycove Secondary Community	-	-	-	23.3
04444019	Seymour Heights Elementary	16.5	22.0	25.3	-
04444032	Sherwood Park Elementary	19.6	19.5	27.6	-
04444012	Sutherland Secondary	-	-	-	25.1
04444021	Upper Lynn Elementary	18.0	22.0	27.9	-
04444009	Westview Elementary	12.0	20.8	25.8	-
04444026	Windsor Secondary	-	-	-	24.9

---

## Glossary

---

Term	Definition / Notes
English Language Learners (ELL)	<ul style="list-style-type: none"><li>• A program offered to students whose primary language(s) is/are other than English, and who may require additional services.</li></ul>
Grade	<ul style="list-style-type: none"><li>• The assigned grade of a student on October 15.</li></ul>
K	<ul style="list-style-type: none"><li>• Kindergarten</li></ul>
Number of Students	<ul style="list-style-type: none"><li>• Student population is calculated by headcount.</li></ul>
Student	<ul style="list-style-type: none"><li>• A person enrolled in a BC school. Student populations are calculated by headcount. Students include all adult and school-aged persons who are working toward a certificate of graduation.</li></ul>
Student Entitled to an Individual Education Plan	<ul style="list-style-type: none"><li>• A student for whom an Individual Education Plan (IEP) must be designed under the Individual Education Plan order, Ministerial Order 638/95.</li></ul>