

Overview of Class Size and Composition in British Columbia Public Schools 2012/13

School District 043 Coquitlam

These class size data are current as of October 15, 2012 and have been verified by school districts.

PLEASE NOTE

The Ministry makes small and continuous improvements to the quality of its data. Sometimes these changes result in differences from previously published reports. The data in this report are the most accurate data available at time of publication.

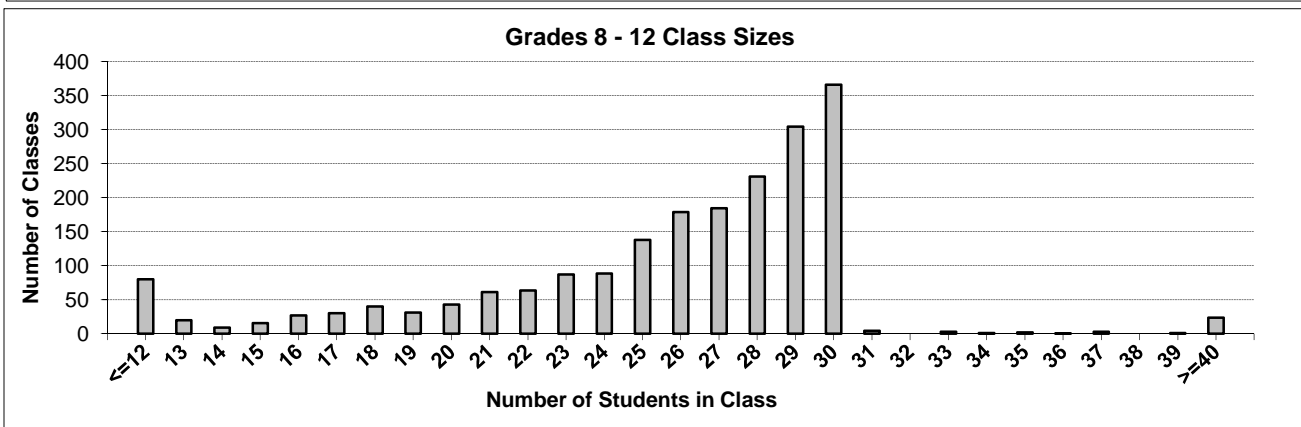
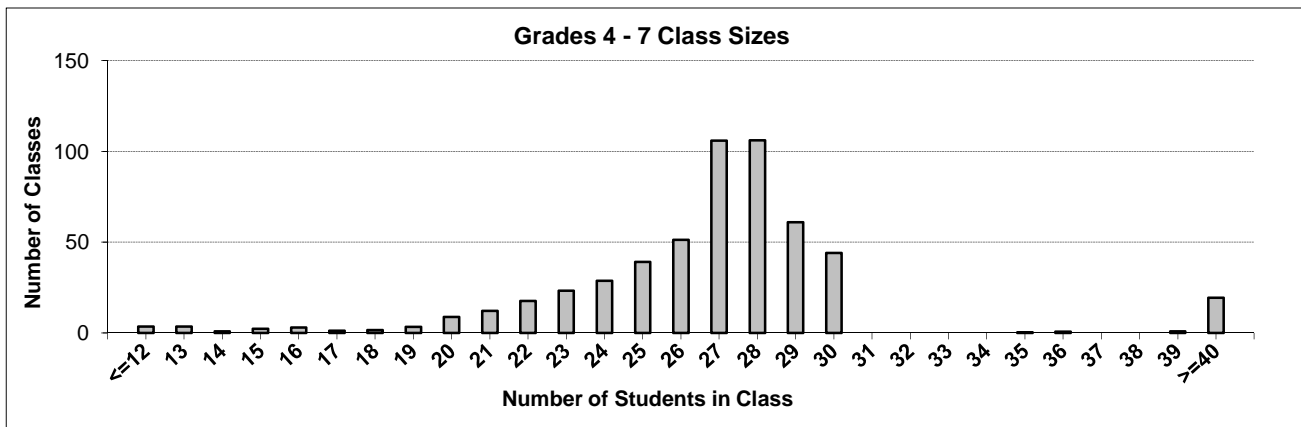
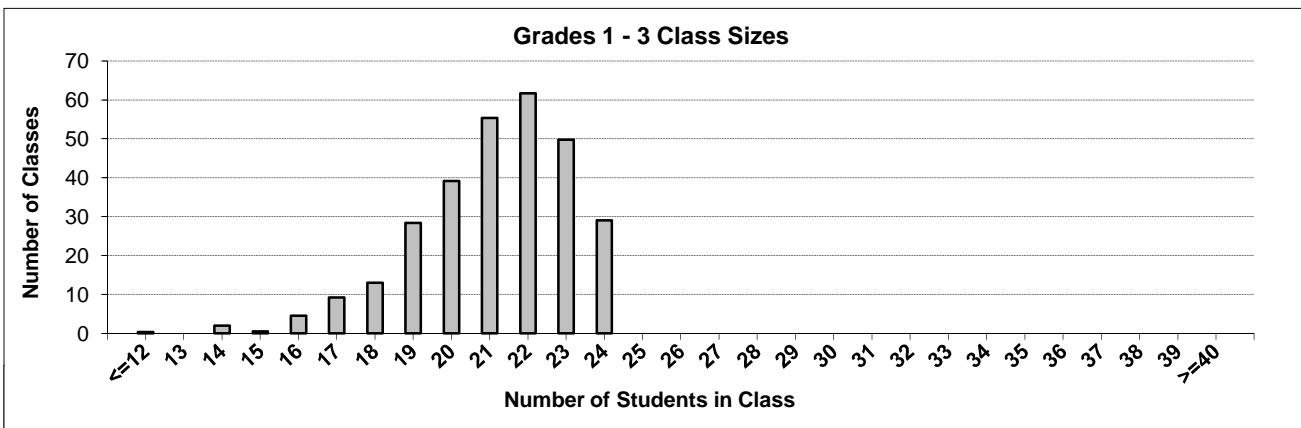
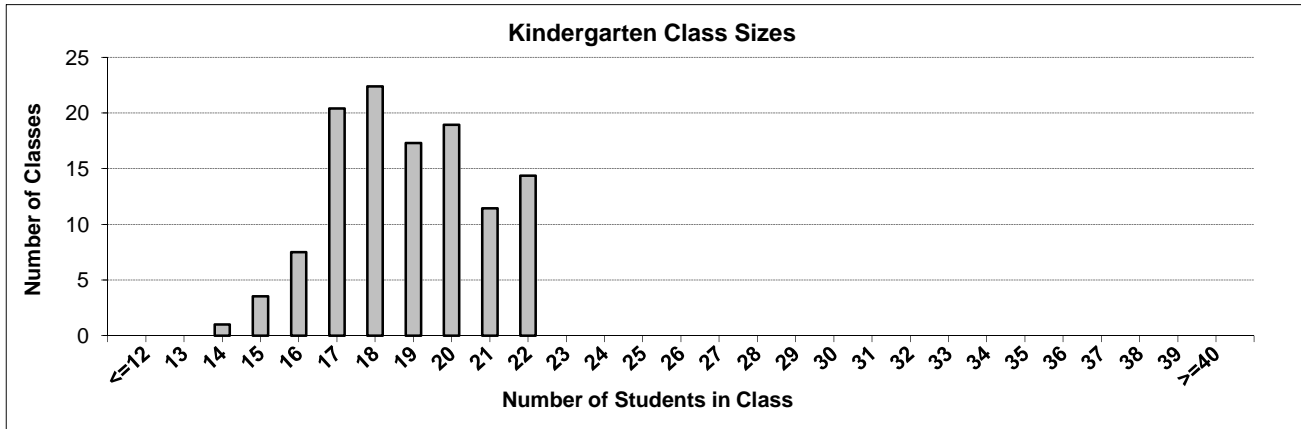
Ministry reports are available at <http://www.bced.gov.bc.ca/reporting/>

Contact the Business Intelligence Unit at educ.reportingunit@gov.bc.ca

District Class Sizes

043 Coquitlam

Source: Class size data collection (as of October 15) from standard BC public schools.



District - Average Class Size

043 Coquitlam

Source: Class size data collection (as of October 15) from standard BC public schools.

| | | | | |
|-------------------------------|--------------|-------------|-------------|--------------|
| District - Average Class Size | Kindergarten | Grade 1 - 3 | Grade 4 - 7 | Grade 8 - 12 |
| | 18.8 | 21.1 | 27.6 | 25.7 |

| | | | | |
|-------------------------------|--------------|-------------|-------------|--------------|
| Province - Average Class Size | Kindergarten | Grade 1 - 3 | Grade 4 - 7 | Grade 8 - 12 |
| | 19.0 | 21.1 | 25.4 | 23.3 |

| | |
|---|-----|
| Number of Reported Classes with Assigned Education Assistants | 613 |
|---|-----|

| | |
|--|----|
| Number of Reported Schools in District | 67 |
|--|----|

| | |
|--|-------|
| Number of Reported Classes in District | 2,983 |
|--|-------|

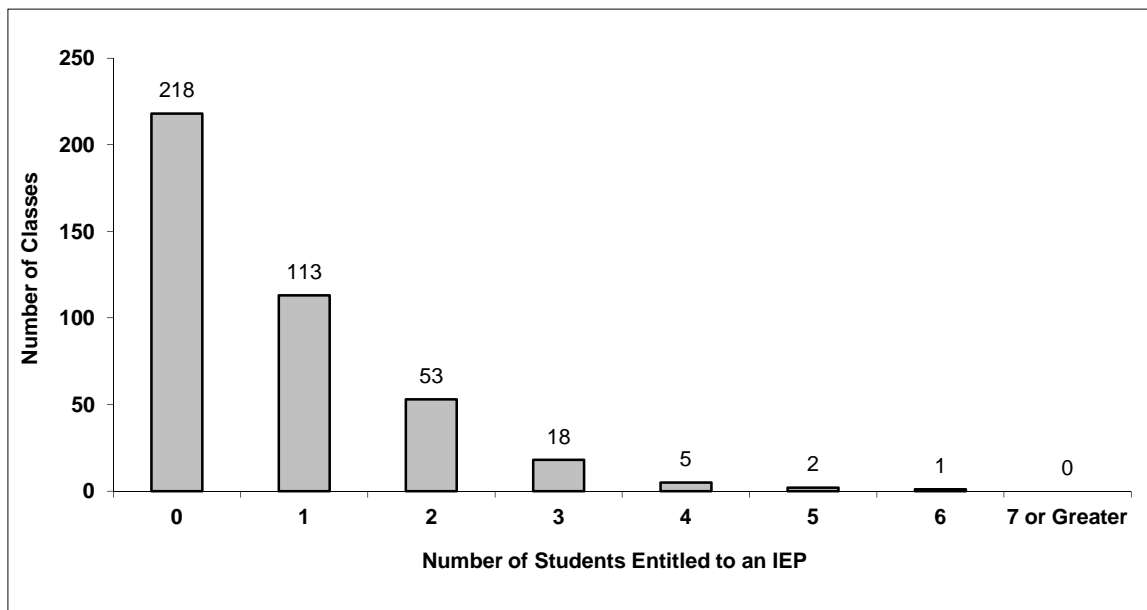
| | |
|---|----|
| Number of Reported Classes in District with more than 30 Students | 59 |
|---|----|

District - Students Entitled to an Individual Education Plan (IEP)

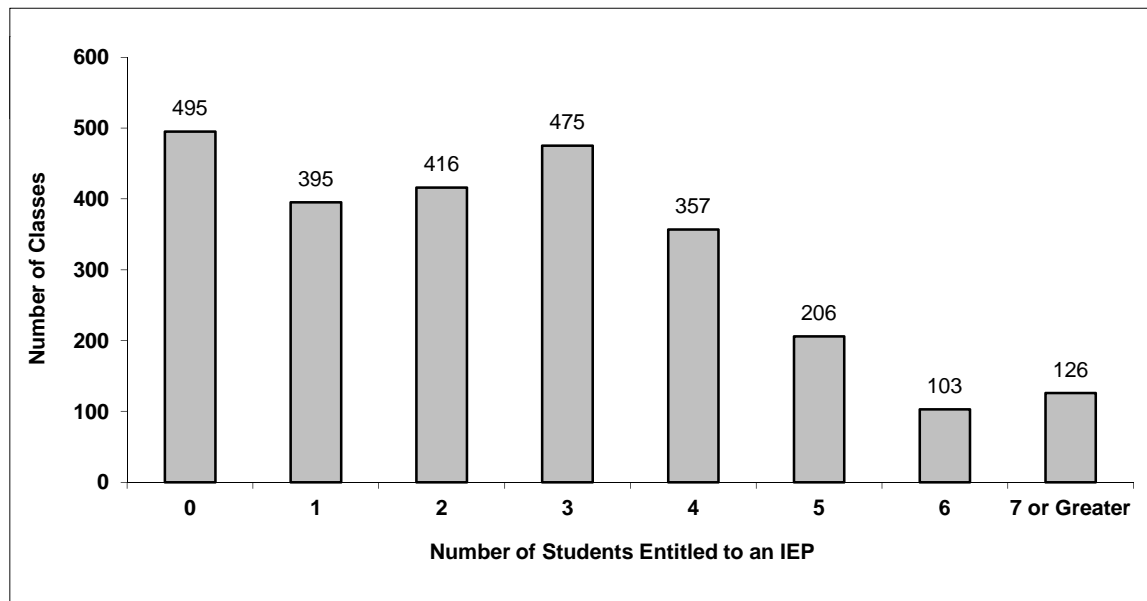
043 Coquitlam

Source: Class size data collection (as of October 15) from standard BC public schools.

Grades K-3 - Number of Classes in District with 'X' Number of Students Entitled to an IEP



Grades 4-12 - Number of Classes in District with 'X' Number of Students Entitled to an IEP

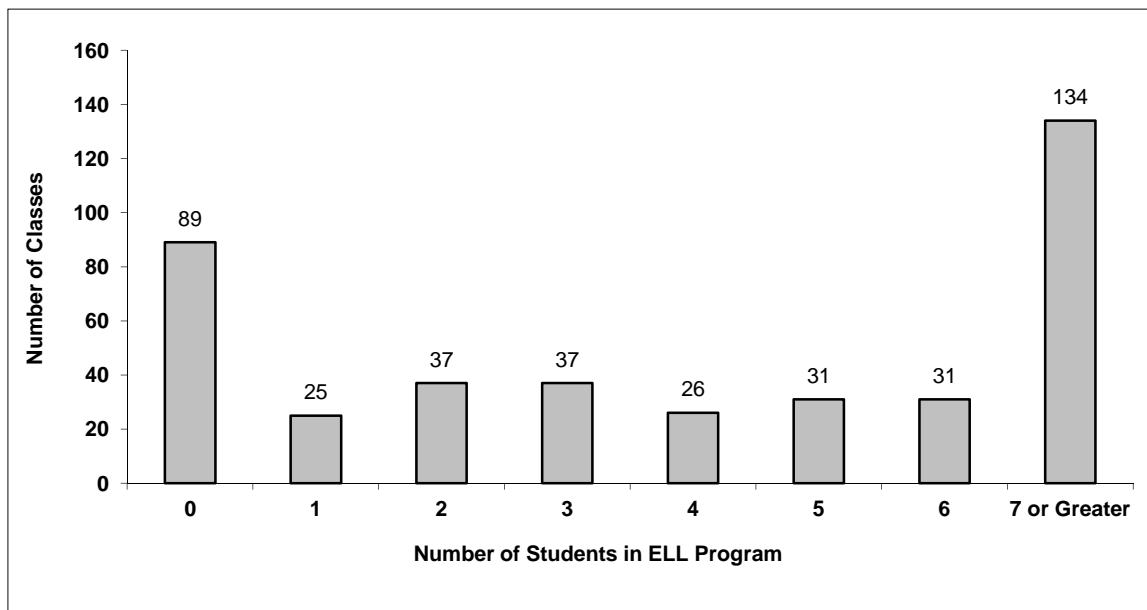


District - English Language Learners (ELL)

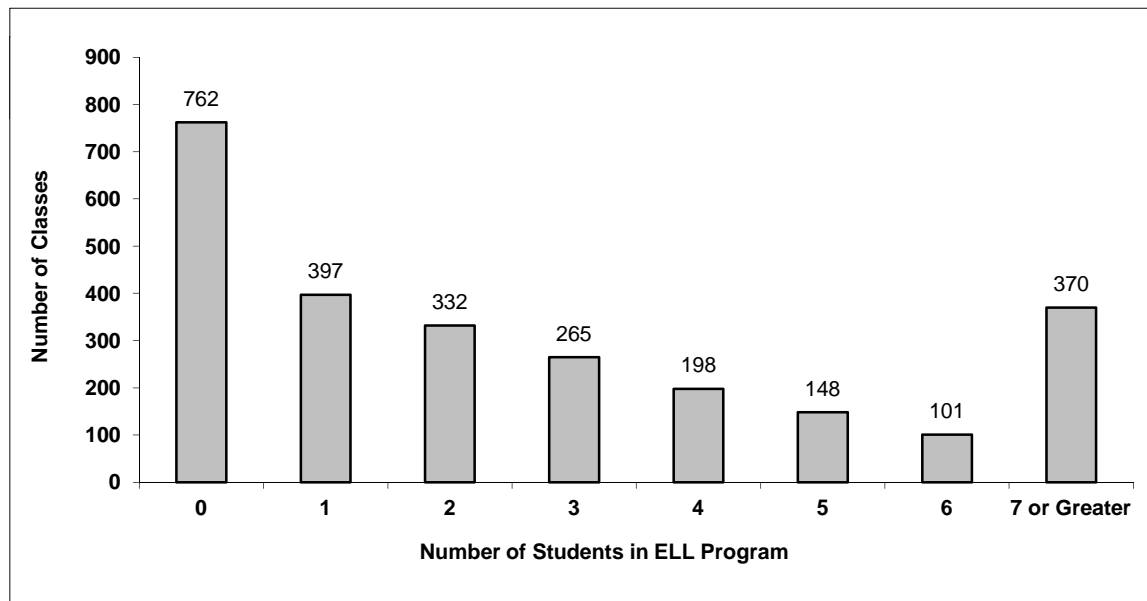
043 Coquitlam

Source: Class size data collection (as of October 15) from standard BC public schools.

Grades K-3 - Number of Classes in District with 'X' Number of ELL



Grades 4-12 - Number of Classes in District with 'X' Number of ELL



043 Coquitlam - Average Class Size by School

Source: Class size data collection (as of October 15) from standard BC public schools.

| Ministry Code | School Name | Kindergarten | Grade 1 - 3 | Grade 4 - 7 | Grade 8 - 12 |
|---------------|--------------------------------|--------------|-------------|-------------|--------------|
| 04343004 | Alderson Elementary | 19.2 | 20.6 | 24.0 | - |
| 04343002 | Anmore Elementary | 21.0 | 20.2 | 24.9 | - |
| 04343071 | Aspenwood Elementary | 18.0 | 23.1 | 27.4 | - |
| 04343005 | Baker Drive Elementary | 17.4 | 17.5 | 24.5 | - |
| 04343093 | Banting Middle School | - | - | 29.0 | 28.9 |
| 04343006 | Birchland Elementary | 19.6 | 19.7 | 24.9 | - |
| 04343074 | Blakeburn Elementary | 18.3 | 22.2 | 28.9 | - |
| 04343009 | Bramblewood Elementary | 19.5 | 22.0 | 27.0 | - |
| 04343010 | Cape Horn Elementary | 17.0 | 20.8 | 22.0 | - |
| 04343072 | Castle Park Elementary | 18.0 | 21.1 | 28.9 | - |
| 04343011 | Cedar Drive Elementary | 16.3 | 21.0 | 24.7 | - |
| 04343076 | Centennial School | - | - | - | 24.5 |
| 04343012 | Central Elementary | 21.0 | 21.3 | 21.1 | - |
| 04343102 | Citadel Middle School | - | - | 26.8 | 27.7 |
| 04343078 | Como Lake Middle School | - | - | 20.8 | 19.5 |
| 04343013 | Coquitlam River Elementary | 18.0 | 22.6 | 28.7 | - |
| 04343080 | Dr Charles Best Secondary | - | - | - | 25.5 |
| 04343020 | Eagle Ridge Elementary | 20.7 | 21.5 | 27.1 | - |
| 04343053 | Ecole Porter Street Elementary | 21.6 | 21.7 | 28.8 | - |
| 04343018 | Glen Elementary | 20.5 | 21.6 | 26.9 | - |
| 04343019 | Glenayre Elementary | 17.2 | 19.7 | 26.1 | - |
| 04343125 | Gleneagle Secondary | - | - | - | 25.3 |
| 04343073 | Hampton Park Elementary | 19.6 | 21.8 | 26.8 | - |
| 04343021 | Harbour View Elementary | 18.3 | 21.3 | 21.8 | - |
| 04343022 | Hazel Trembath Elementary | 19.4 | 21.2 | 27.6 | - |
| 04343017 | Heritage Mountain Elementary | 19.7 | 21.7 | 29.0 | - |
| 04343127 | Heritage Woods Secondary | - | - | - | 27.3 |
| 04343024 | Hillcrest Middle School | - | - | 29.2 | 30.6 |
| 04343030 | Inquiry Hub | - | - | - | 19.0 |
| 04343027 | Irvine Elementary | 20.0 | 19.7 | 23.3 | - |
| 04343029 | James Park Elementary | 21.0 | 22.7 | 24.7 | - |
| 04343031 | Kilmer Elementary | 18.7 | 19.1 | 22.6 | - |
| 04343108 | Kwayhquiltum Middle School | - | - | 29.2 | 29.5 |
| 04343033 | Leigh Elementary | 17.8 | 20.4 | 27.3 | - |
| 04343034 | Lord Baden-Powell Elementary | 17.5 | 21.3 | 26.0 | - |
| 04343081 | Maillard Middle School | - | - | 28.5 | 27.3 |
| 04343091 | Maple Creek Middle School | - | - | 28.3 | 25.7 |
| 04343036 | Mary Hill Elementary | 20.7 | 20.9 | 25.7 | - |
| 04343037 | Meadowbrook Elementary | 16.3 | 16.7 | 19.3 | - |
| 04343038 | Miller Park Community School | 20.5 | 20.5 | 29.0 | - |
| 04343090 | Minnehada Middle School | - | - | 27.5 | 24.5 |
| 04343084 | Montgomery Middle School | - | - | 28.5 | 27.4 |
| 04343043 | Moody Elementary | 15.5 | 21.4 | 23.6 | - |
| 04343086 | Moody Middle School | - | - | 30.0 | 26.7 |
| 04343045 | Mountain Meadows Elementary | 17.0 | 22.7 | 25.9 | - |
| 04343044 | Mountain View Elementary | 17.7 | 19.2 | 19.0 | - |
| 04343046 | Mundy Road Elementary | 19.8 | 21.8 | 28.0 | - |
| 04343047 | Nestor Elementary | 20.8 | 20.4 | 26.8 | - |
| 04343048 | Panorama Heights Elementary | 17.3 | 22.7 | 28.1 | - |
| 04343049 | Parkland Elementary | 16.5 | 21.9 | 25.9 | - |
| 04343130 | Pinetree Secondary | - | - | - | 25.9 |
| 04343050 | Pinetree Way Elementary | 21.0 | 22.0 | 27.1 | - |
| 04343082 | Pitt River Middle School | - | - | 24.1 | 27.1 |
| 04343051 | Pleasantide Elementary | 17.5 | 21.7 | 28.0 | - |
| 04343088 | Port Moody Secondary | - | - | - | 23.4 |

043 Coquitlam - Average Class Size by School

Source: Class size data collection (as of October 15) from standard BC public schools.

| Ministry Code | School Name | Kindergarten | Grade 1 - 3 | Grade 4 - 7 | Grade 8 - 12 |
|---------------|---------------------------|--------------|-------------|-------------|--------------|
| 04343023 | R C Macdonald Elementary | 21.0 | 20.9 | 25.1 | - |
| 04343054 | Ranch Park Elementary | 18.0 | 20.4 | 24.7 | - |
| 04343132 | Riverside Secondary | - | - | - | 25.9 |
| 04343057 | Riverview Park Elementary | 21.5 | 20.3 | 24.7 | - |
| 04343055 | Rochester Elementary | 18.0 | 22.7 | 27.9 | - |
| 04343056 | Roy Stibbs Elementary | 20.0 | 19.3 | 24.3 | - |
| 04343113 | Scott Creek Middle School | - | - | 34.5 | 31.8 |
| 04343058 | Seaview Community School | 18.7 | 18.9 | 25.2 | - |
| 04343114 | Summit Middle School | - | - | 31.1 | 30.4 |
| 04343136 | Terry Fox Secondary | - | - | - | 26.0 |
| 04343069 | Walton Elementary | 20.0 | 21.7 | 25.8 | - |
| 04343070 | Westwood Elementary | 14.5 | 21.8 | 24.0 | - |

Glossary

| Term | Definition / Notes |
|--|---|
| English Language Learners (ELL) | <ul style="list-style-type: none">• A program offered to students whose primary language(s) is/are other than English, and who may require additional services. |
| Grade | <ul style="list-style-type: none">• The assigned grade of a student on October 15. |
| K | <ul style="list-style-type: none">• Kindergarten |
| Number of Students | <ul style="list-style-type: none">• Student population is calculated by headcount. |
| Student | <ul style="list-style-type: none">• A person enrolled in a BC school. Student populations are calculated by headcount. Students include all adult and school-aged persons who are working toward a certificate of graduation. |
| Student Entitled to an Individual Education Plan | <ul style="list-style-type: none">• A student for whom an Individual Education Plan (IEP) must be designed under the Individual Education Plan order, Ministerial Order 638/95. |