

# Overview of Class Size and Composition in British Columbia Public Schools 2012/13

## School District 038 Richmond

These class size data are current as of October 15, 2012 and have been verified by school districts.

---

#### **PLEASE NOTE**

The Ministry makes small and continuous improvements to the quality of its data. Sometimes these changes result in differences from previously published reports. The data in this report are the most accurate data available at time of publication.

Ministry reports are available at <http://www.bced.gov.bc.ca/reporting/>

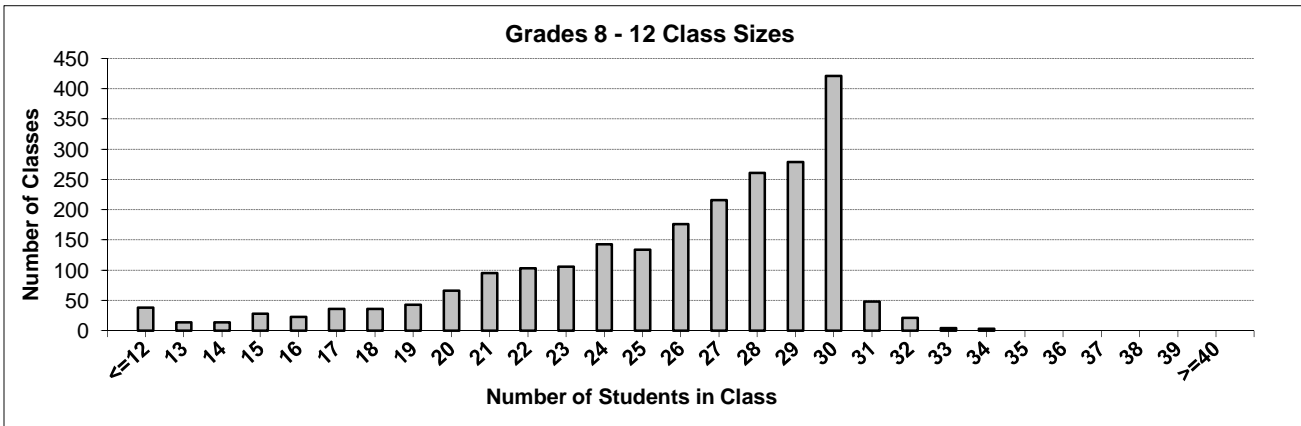
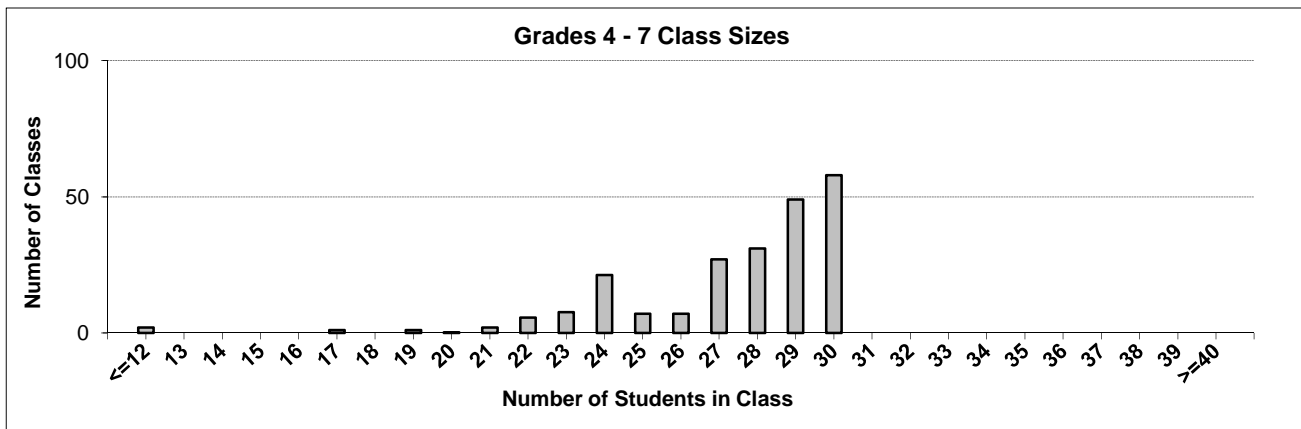
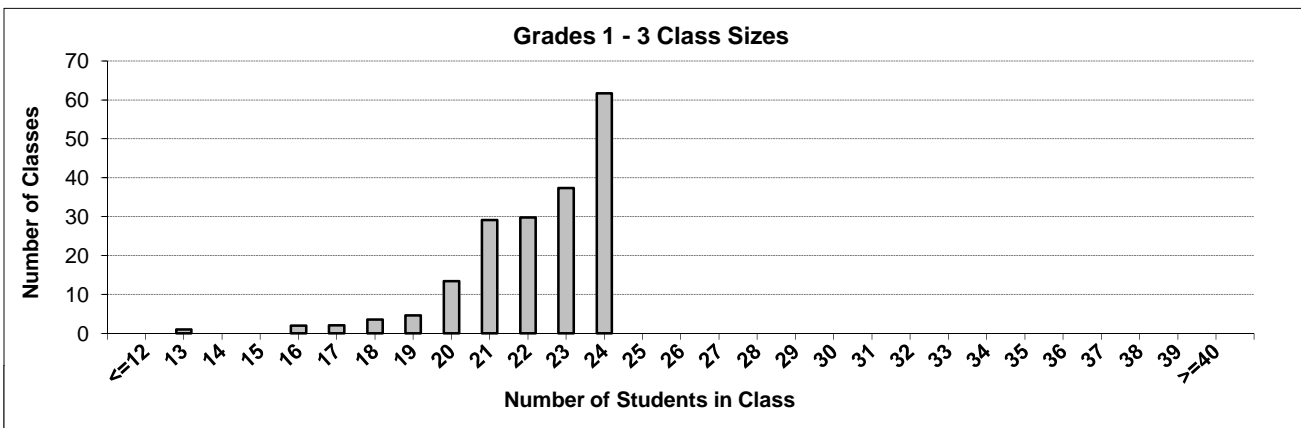
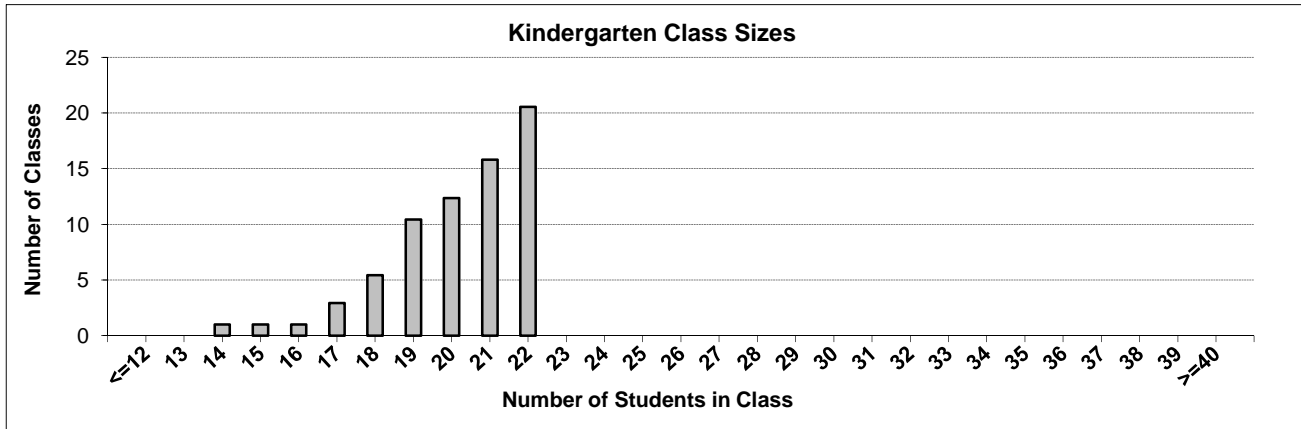
Contact the Business Intelligence Unit at [educ.reportingunit@gov.bc.ca](mailto:educ.reportingunit@gov.bc.ca)

---

# District Class Sizes

## 038 Richmond

Source: Class size data collection (as of October 15) from standard BC public schools.



---

## District - Average Class Size

---

### 038 Richmond

Source: Class size data collection (as of October 15) from standard BC public schools.

District - Average Class Size	Kindergarten	Grade 1 - 3	Grade 4 - 7	Grade 8 - 12
	20.2	22.2	27.4	25.7

Province - Average Class Size	Kindergarten	Grade 1 - 3	Grade 4 - 7	Grade 8 - 12
	19.0	21.1	25.4	23.3

Number of Reported Classes with Assigned Education Assistants	666
---	-----

Number of Reported Schools in District	48
--	----

Number of Reported Classes in District	2,783
--	-------

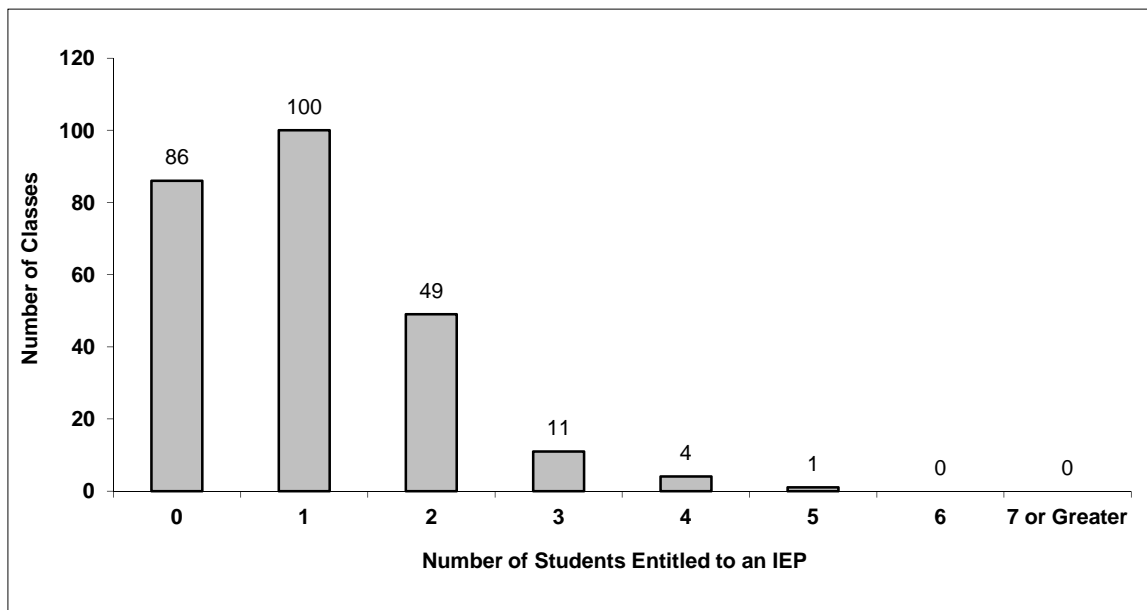
Number of Reported Classes in District with more than 30 Students	76
---	----

## District - Students Entitled to an Individual Education Plan (IEP)

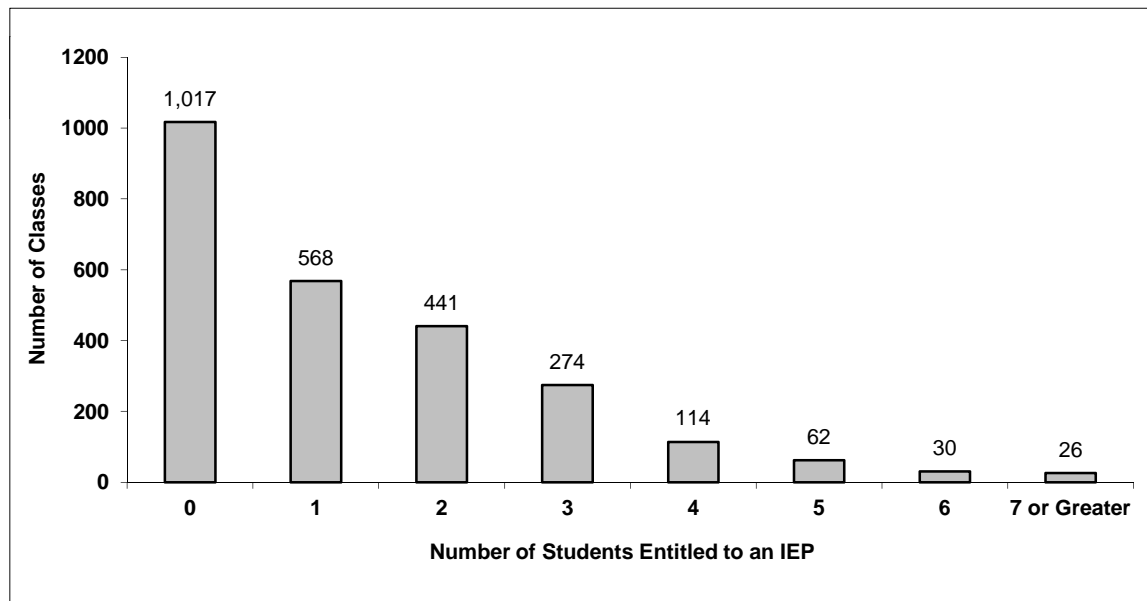
### 038 Richmond

Source: Class size data collection (as of October 15) from standard BC public schools.

Grades K-3 - Number of Classes in District with 'X' Number of Students Entitled to an IEP



Grades 4-12 - Number of Classes in District with 'X' Number of Students Entitled to an IEP

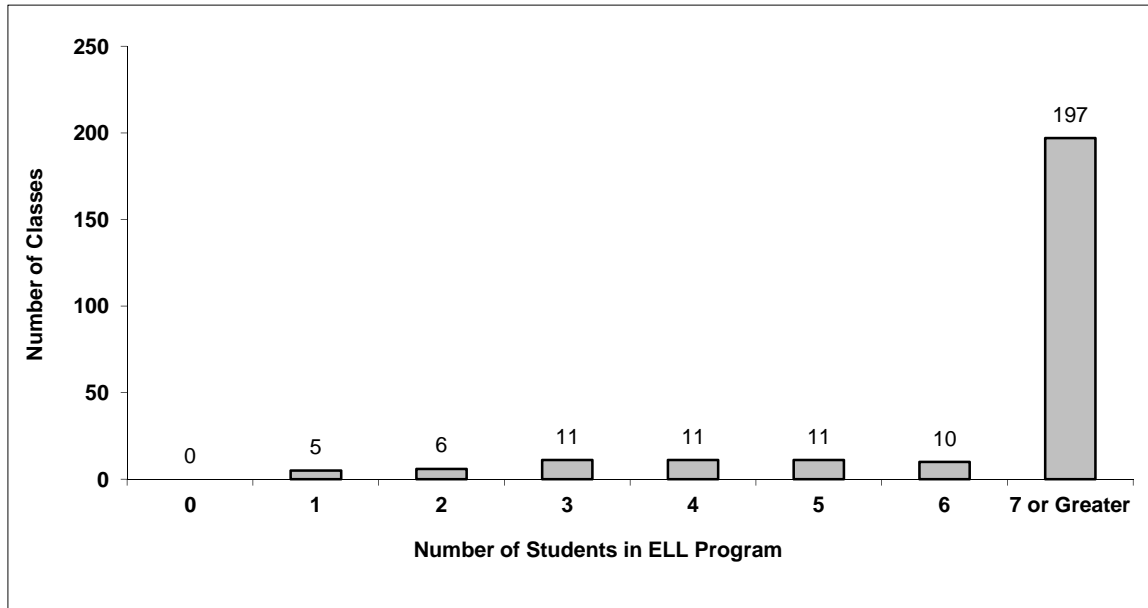


# District - English Language Learners (ELL)

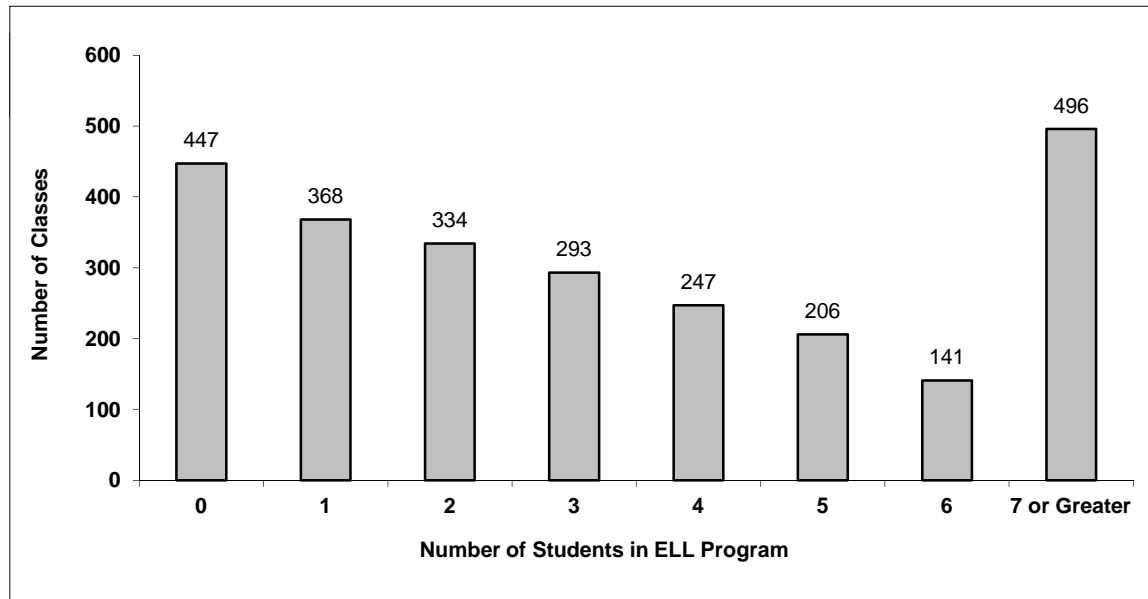
## 038 Richmond

Source: Class size data collection (as of October 15) from standard BC public schools.

Grades K-3 - Number of Classes in District with 'X' Number of ELL



Grades 4-12 - Number of Classes in District with 'X' Number of ELL



## 038 Richmond - Average Class Size by School

Source: Class size data collection (as of October 15) from standard BC public schools.

Ministry Code	School Name	Kindergarten	Grade 1 - 3	Grade 4 - 7	Grade 8 - 12
03838064	A.R. MacNeill Secondary	-	-	-	25.5
03838020	Alfred B Dixon Elementary	18.7	20.5	26.7	-
03838060	Archibald Blair Elementary	21.7	23.8	30.0	-
03838014	Blundell Elementary	19.0	21.7	26.3	-
03838058	Cambie Secondary	-	-	-	25.1
03838029	Daniel Woodward Elementary	21.0	23.2	29.0	-
03838030	Donald E McKay Elementary	20.0	23.0	27.3	-
03838008	Garden City Elementary	19.5	20.3	22.6	-
03838057	General Currie Elementary	21.6	23.4	28.3	-
03838006	Hamilton Elementary	19.0	23.3	27.9	-
03838059	Henry Anderson Elementary	21.7	22.6	28.8	-
03838037	Howard De Beck Elementary	18.5	22.6	27.0	-
03838031	Hugh Boyd Secondary	-	-	-	24.8
03838033	Hugh McRoberts Secondary	-	-	-	25.6
03838042	J N Burnett Secondary	-	-	-	26.5
03838025	James Gilmore Elementary	20.0	21.2	25.4	-
03838040	James McKinney Elementary	20.9	23.0	25.6	-
03838013	James Thompson Elementary	21.0	23.7	28.9	-
03838016	James Whiteside Elementary	20.0	20.8	26.5	-
03838056	Jessie Wowk Elementary	14.0	24.0	27.8	-
03838052	John G Diefenbaker Elementary	19.6	21.4	27.0	-
03838021	John T Errington Elementary	18.0	22.6	29.4	-
03838055	Kathleen McNeely Elementary	21.0	23.5	25.3	-
03838048	Kingswood Elementary	17.0	19.6	25.4	-
03838005	Lord Byng Elementary	22.0	23.4	28.7	-
03838041	Manoah Steves Elementary	20.2	19.3	27.5	-
03838046	Maple Lane Elementary	22.0	23.8	26.1	-
03838044	Matthew McNair Secondary	-	-	-	25.6
03838001	Mitchell Elementary	21.3	21.7	27.0	-
03838047	Quilchena Elementary	21.0	24.0	27.8	-
03838024	R C Palmer Secondary	-	-	-	24.7
03838009	R M Grauer Elementary	20.0	20.8	25.2	-
03838054	R. C. Talmey Elementary	17.0	20.3	27.7	-
03838065	Richmond Secondary	-	-	-	25.5
03838062	Robert Alexander McMath Secondary	-	-	-	26.6
03838017	Robert J Tait Elementary	21.0	21.8	28.2	-
03838035	Samuel Brighthouse Elementary	20.1	22.1	28.4	-
03838010	Sea Island Elementary	20.0	20.6	-	-
03838063	Spul'u'kwuks Elementary	18.3	24.0	29.4	-
03838045	Steveston-London Secondary	-	-	-	26.6
03838019	Thomas Kidd Elementary	22.0	21.7	26.3	-
03838053	Tomekichi Homma Elementary	21.1	23.1	28.6	-
03838023	Tomsett Elementary	19.7	22.1	25.8	-
03838027	W D Ferris Elementary	22.0	23.6	29.1	-
03838026	Walter Lee Elementary	21.5	22.5	24.1	-
03838049	Westwind Elementary	21.2	21.7	29.1	-
03838043	William Bridge Elementary	21.0	20.4	28.7	-
03838015	William Cook Elementary	18.3	23.1	28.3	-

---

## Glossary

---

Term	Definition / Notes
English Language Learners (ELL)	<ul style="list-style-type: none"><li>• A program offered to students whose primary language(s) is/are other than English, and who may require additional services.</li></ul>
Grade	<ul style="list-style-type: none"><li>• The assigned grade of a student on October 15.</li></ul>
K	<ul style="list-style-type: none"><li>• Kindergarten</li></ul>
Number of Students	<ul style="list-style-type: none"><li>• Student population is calculated by headcount.</li></ul>
Student	<ul style="list-style-type: none"><li>• A person enrolled in a BC school. Student populations are calculated by headcount. Students include all adult and school-aged persons who are working toward a certificate of graduation.</li></ul>
Student Entitled to an Individual Education Plan	<ul style="list-style-type: none"><li>• A student for whom an Individual Education Plan (IEP) must be designed under the Individual Education Plan order, Ministerial Order 638/95.</li></ul>