

# Overview of Class Size and Composition in British Columbia Public Schools 2012/13

## School District 027 Cariboo-Chilcotin

These class size data are current as of October 15, 2012 and have been verified by school districts.

---

### **PLEASE NOTE**

The Ministry makes small and continuous improvements to the quality of its data. Sometimes these changes result in differences from previously published reports. The data in this report are the most accurate data available at time of publication.

Ministry reports are available at <http://www.bced.gov.bc.ca/reporting/>

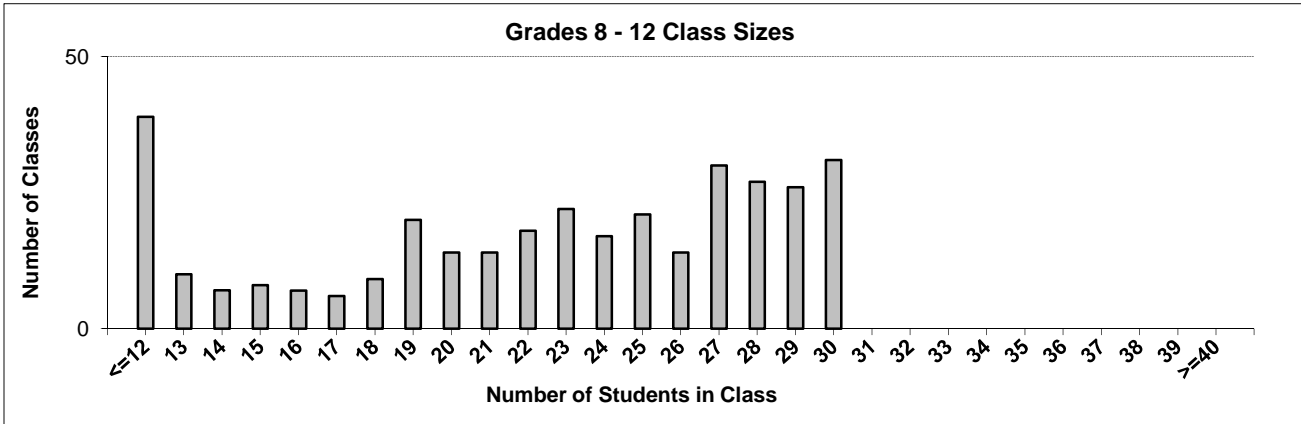
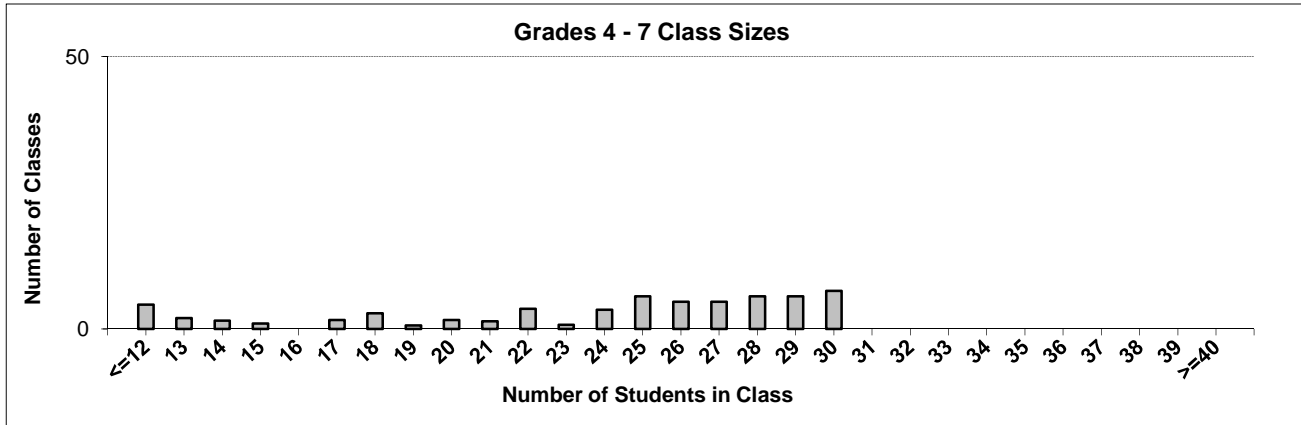
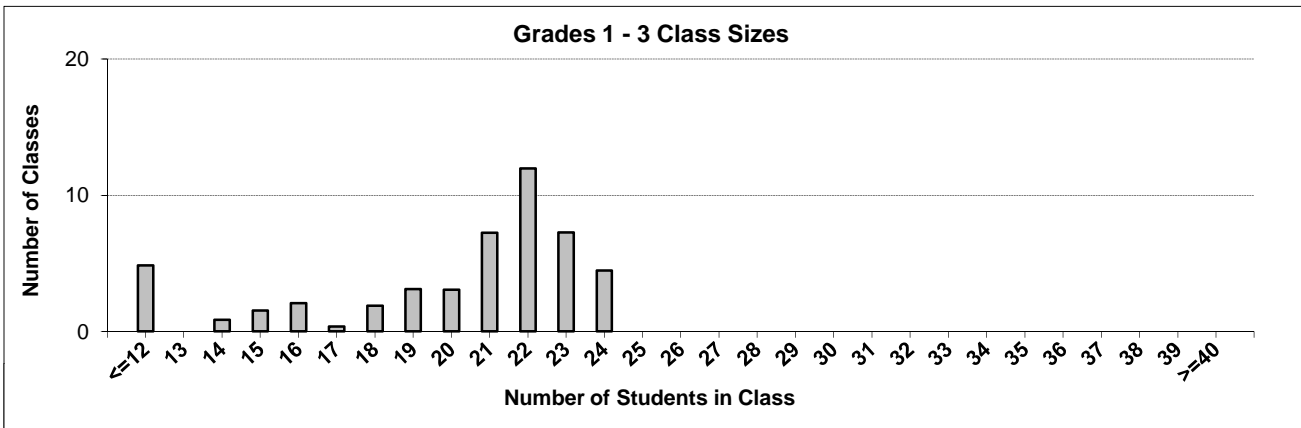
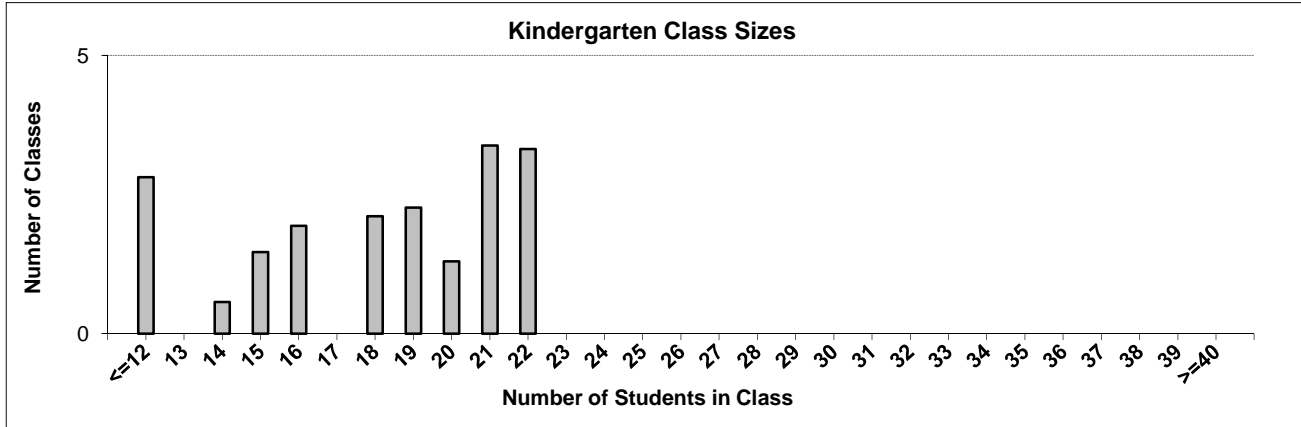
Contact the Business Intelligence Unit at [educ.reportingunit@gov.bc.ca](mailto:educ.reportingunit@gov.bc.ca)

---

# District Class Sizes

## 027 Cariboo-Chilcotin

Source: Class size data collection (as of October 15) from standard BC public schools.



---

## District - Average Class Size

---

### 027 Cariboo-Chilcotin

Source: Class size data collection (as of October 15) from standard BC public schools.

District - Average Class Size	Kindergarten	Grade 1 - 3	Grade 4 - 7	Grade 8 - 12
	17.7	19.8	23.4	21.8

Province - Average Class Size	Kindergarten	Grade 1 - 3	Grade 4 - 7	Grade 8 - 12
	19.0	21.1	25.4	23.3

Number of Reported Classes with Assigned Education Assistants	0
---	---

Number of Reported Schools in District	28
--	----

Number of Reported Classes in District	468
--	-----

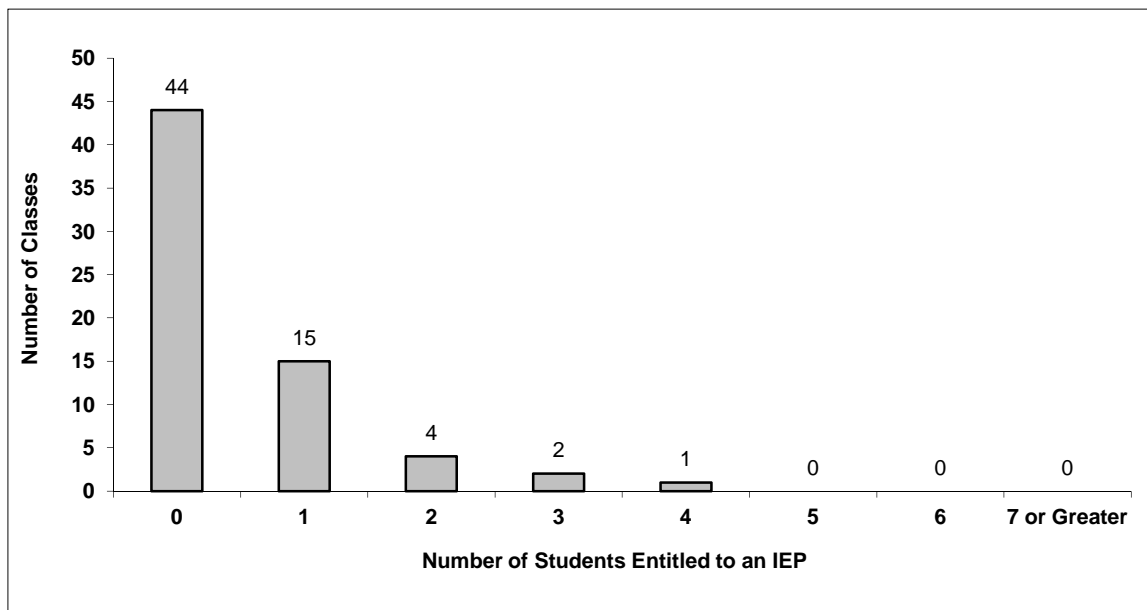
Number of Reported Classes in District with more than 30 Students	0
---	---

## District - Students Entitled to an Individual Education Plan (IEP)

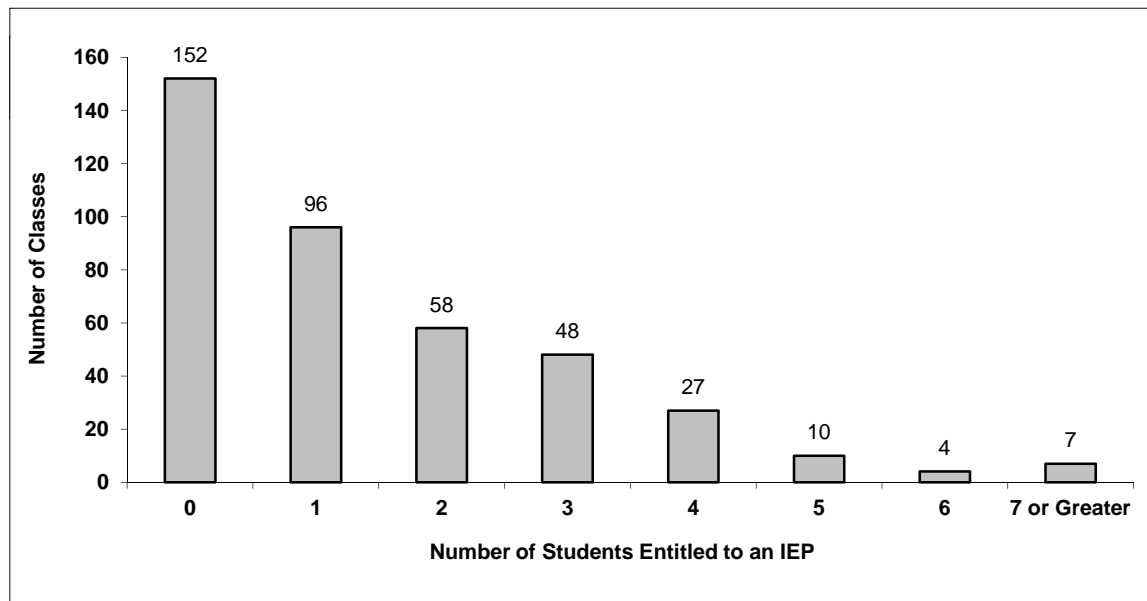
### 027 Cariboo-Chilcotin

Source: Class size data collection (as of October 15) from standard BC public schools.

Grades K-3 - Number of Classes in District with 'X' Number of Students Entitled to an IEP



Grades 4-12 - Number of Classes in District with 'X' Number of Students Entitled to an IEP

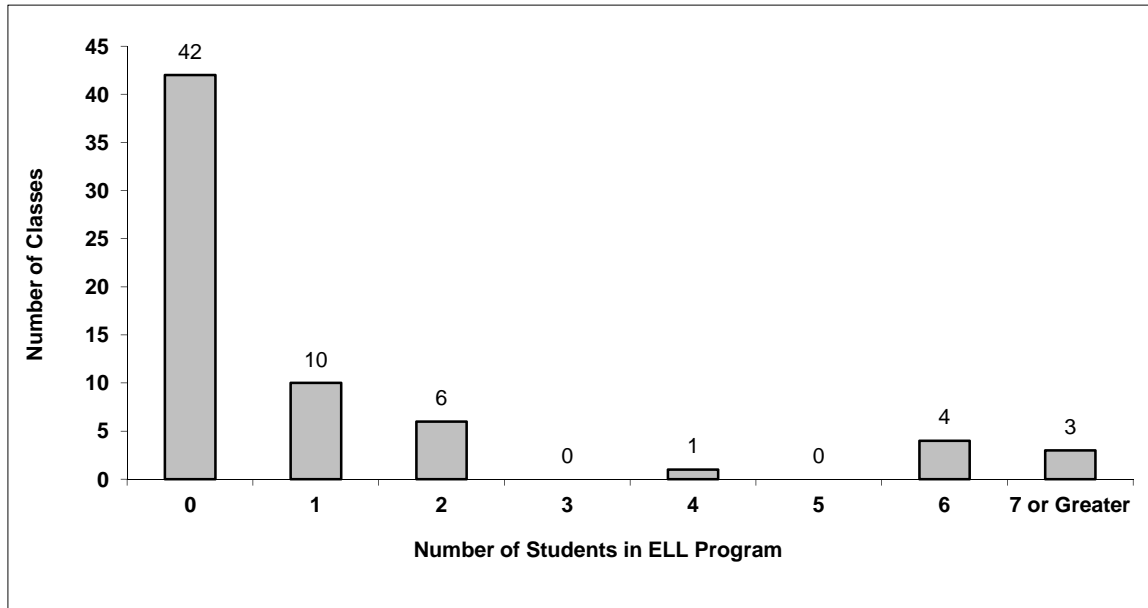


# District - English Language Learners (ELL)

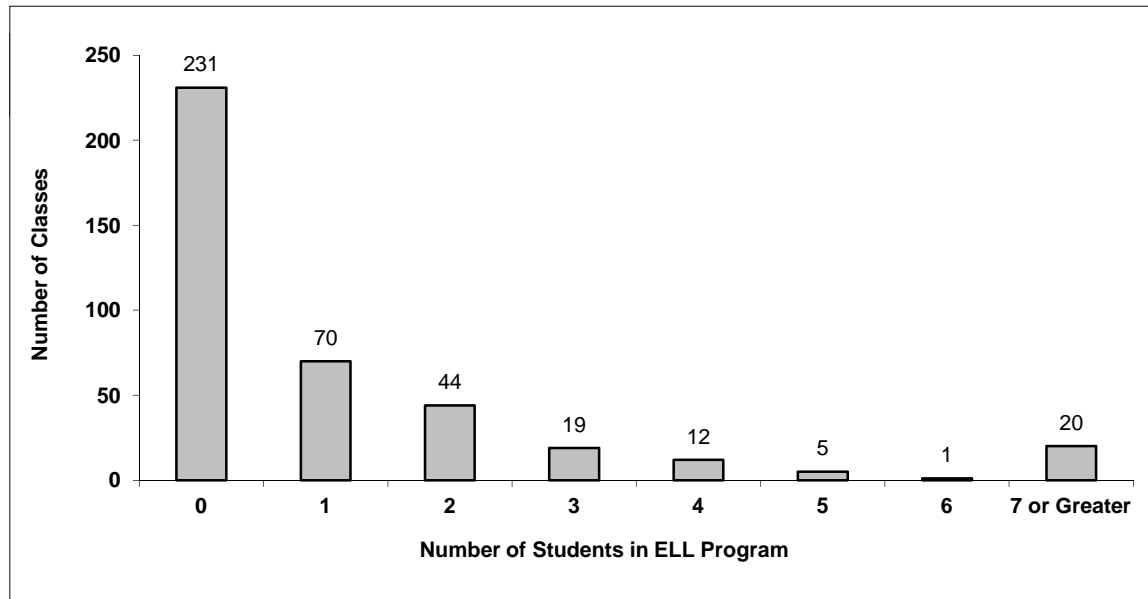
## 027 Cariboo-Chilcotin

Source: Class size data collection (as of October 15) from standard BC public schools.

Grades K-3 - Number of Classes in District with 'X' Number of ELL



Grades 4-12 - Number of Classes in District with 'X' Number of ELL



## 027 Cariboo-Chilcotin - Average Class Size by School

Source: Class size data collection (as of October 15) from standard BC public schools.

Ministry Code	School Name	Kindergarten	Grade 1 - 3	Grade 4 - 7	Grade 8 - 12
02727012	100 Mile House Elementary	17.0	20.7	24.5	-
02727026	100 Mile House Jr Secondary	-	-	-	21.0
02727027	150 Mile Elementary	19.1	21.4	27.1	-
02727071	Alexis Creek Elementary/Secondary	9.0	9.0	13.5	17.0
02727054	Anahim Lake Elem-Jr Secondary	5.0	5.0	9.3	8.0
02727020	Big Lake Elementary	12.0	12.0	13.0	-
02727006	Bridge Lake Elementary	9.0	9.0	18.0	-
02727035	Buffalo Creek Elementary	14.0	14.0	18.0	-
02727057	Cataline Elementary	22.0	21.8	28.7	-
02727041	Chilcotin Road Elementary	17.0	21.7	27.8	-
02727047	Columnneetza Secondary	-	-	-	22.9
02727070	Dog Creek Elem-Jr. Secondary	6.0	6.0	10.0	4.5
02727007	Forest Grove Elementary	16.0	16.0	14.0	-
02727022	Glendale Elementary	20.1	20.2	20.1	-
02727061	Horse Lake Elementary	18.0	21.5	23.1	-
02727008	Horsefly Elem-Jr Secondary	19.0	19.0	17.5	18.0
02727048	Kwaleen Elementary	12.0	18.0	28.0	-
02727030	Lac La Hache Elementary	15.0	15.0	13.0	-
02727014	Likely Elem-Jr Secondary	12.0	12.0	12.0	-
02727011	Marie Sharpe Elementary	22.0	21.3	27.0	-
02727062	Mile 108 Elementary	19.7	22.0	26.3	-
02727045	Mountview Elementary	20.3	22.1	25.8	-
02727059	Naghtaneqed Elem-Jr Secondary	9.0	9.0	6.0	13.3
02727065	Nesika Elementary	20.8	22.6	27.9	-
02727056	Peter Skene Ogden Secondary	-	-	-	21.6
02727066	Tatla Lake Elem-Jr Secondary	14.0	14.0	14.0	3.4
02727024	Wildwood Elementary	10.3	15.0	-	-
02727069	Williams Lake Secondary School	-	-	-	23.9

## Glossary

Term	Definition / Notes
<b>English Language Learners (ELL)</b>	<ul style="list-style-type: none"> <li>• A program offered to students whose primary language(s) is/are other than English, and who may require additional services.</li> </ul>
<b>Grade</b>	<ul style="list-style-type: none"> <li>• The assigned grade of a student on October 15.</li> </ul>
<b>K</b>	<ul style="list-style-type: none"> <li>• Kindergarten</li> </ul>
<b>Number of Students</b>	<ul style="list-style-type: none"> <li>• Student population is calculated by headcount.</li> </ul>
<b>Student</b>	<ul style="list-style-type: none"> <li>• A person enrolled in a BC school. Student populations are calculated by headcount. Students include all adult and school-aged persons who are working toward a certificate of graduation.</li> </ul>
<b>Student Entitled to an Individual Education Plan</b>	<ul style="list-style-type: none"> <li>• A student for whom an Individual Education Plan (IEP) must be designed under the Individual Education Plan order, Ministerial Order 638/95.</li> </ul>