

Overview of Class Size and Composition in British Columbia Public Schools 2012/13

School District 020 Kootenay-Columbia

These class size data are current as of October 15, 2012 and have been verified by school districts.

PLEASE NOTE

The Ministry makes small and continuous improvements to the quality of its data. Sometimes these changes result in differences from previously published reports. The data in this report are the most accurate data available at time of publication.

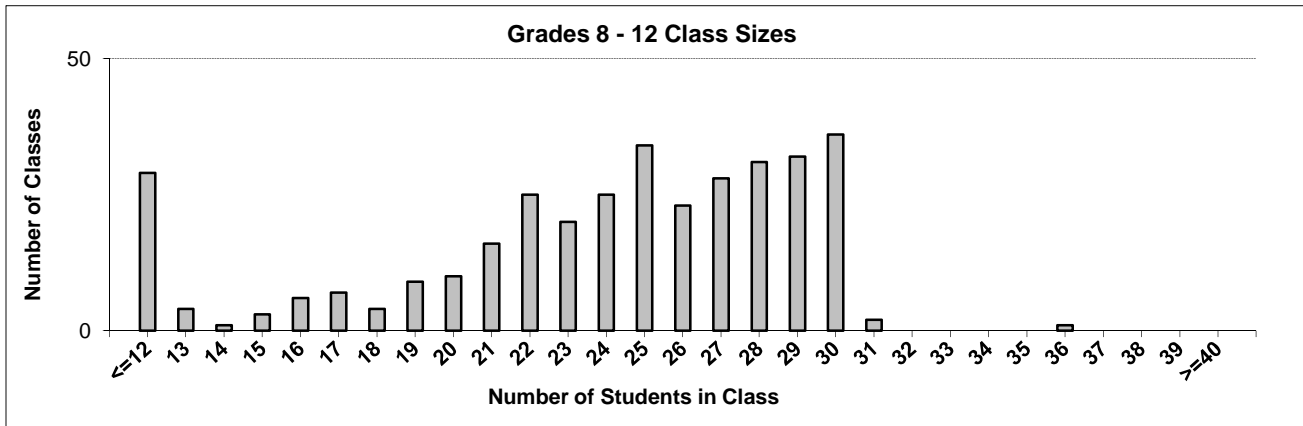
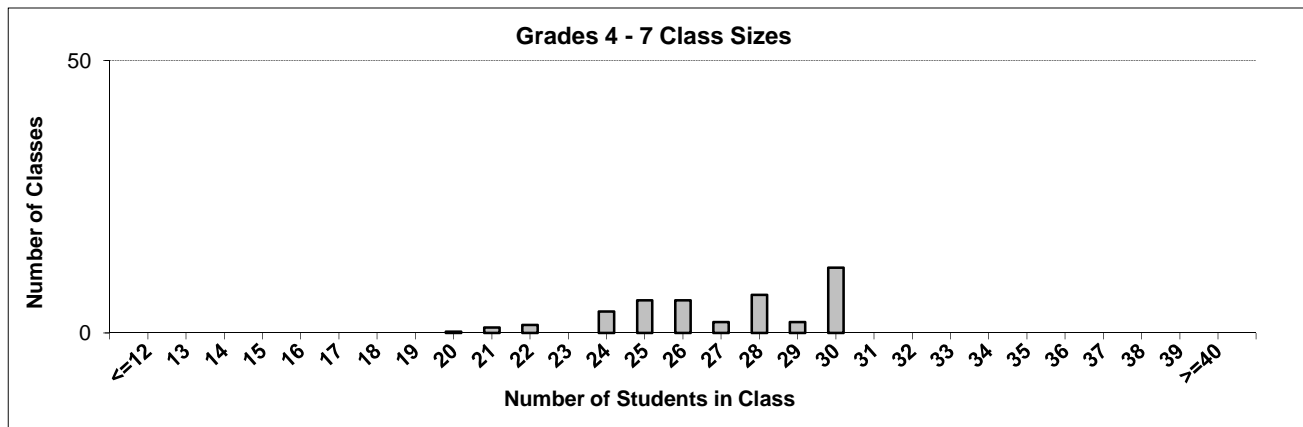
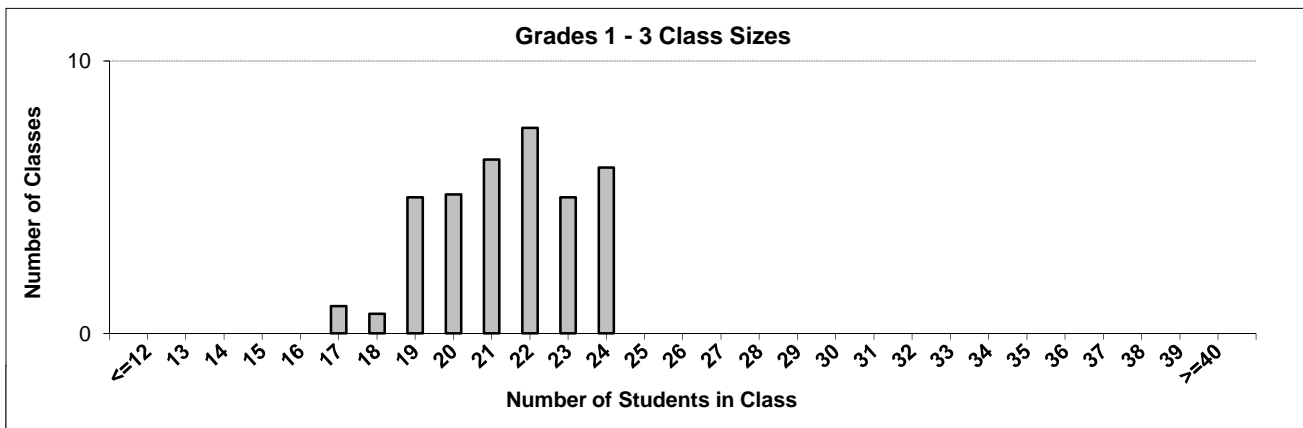
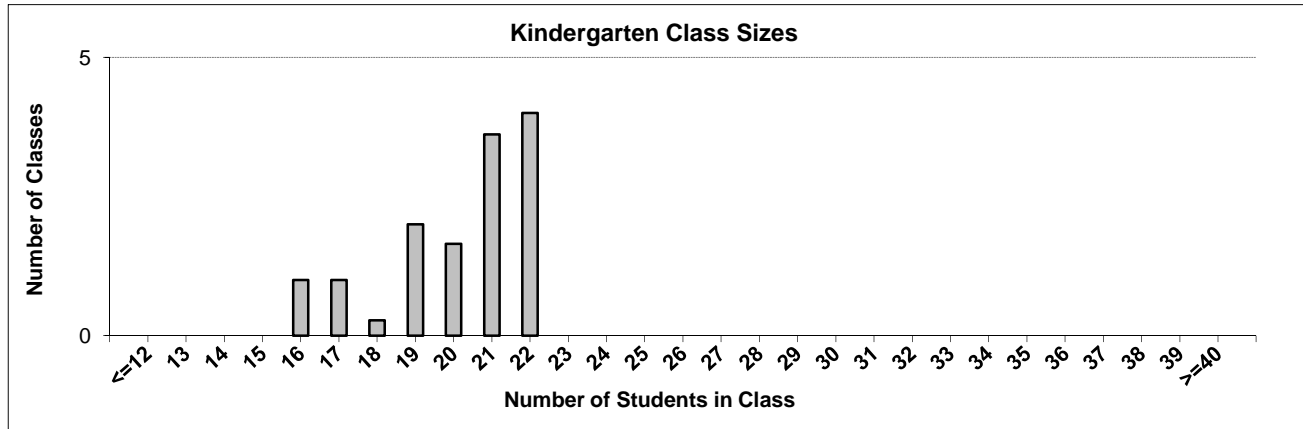
Ministry reports are available at <http://www.bced.gov.bc.ca/reporting/>

Contact the Business Intelligence Unit at educ.reportingunit@gov.bc.ca

District Class Sizes

020 Kootenay-Columbia

Source: Class size data collection (as of October 15) from standard BC public schools.



District - Average Class Size

020 Kootenay-Columbia

Source: Class size data collection (as of October 15) from standard BC public schools.

District - Average Class Size	Kindergarten	Grade 1 - 3	Grade 4 - 7	Grade 8 - 12
	20.2	21.4	27.1	23.3

Province - Average Class Size	Kindergarten	Grade 1 - 3	Grade 4 - 7	Grade 8 - 12
	19.0	21.1	25.4	23.3

Number of Reported Classes with Assigned Education Assistants	130
---	-----

Number of Reported Schools in District	11
--	----

Number of Reported Classes in District	438
--	-----

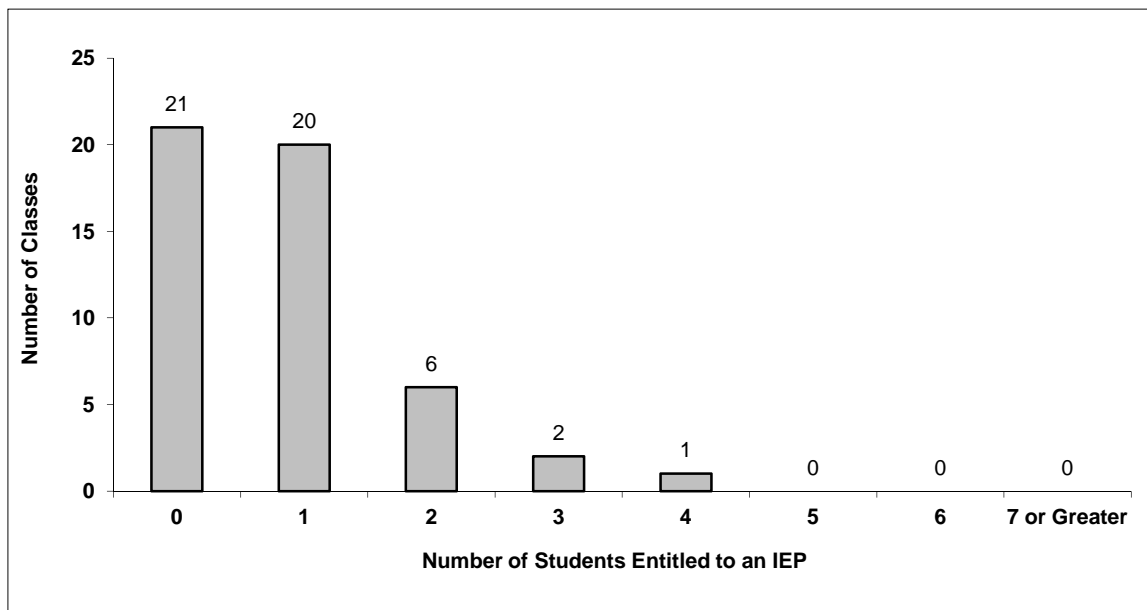
Number of Reported Classes in District with more than 30 Students	3
---	---

District - Students Entitled to an Individual Education Plan (IEP)

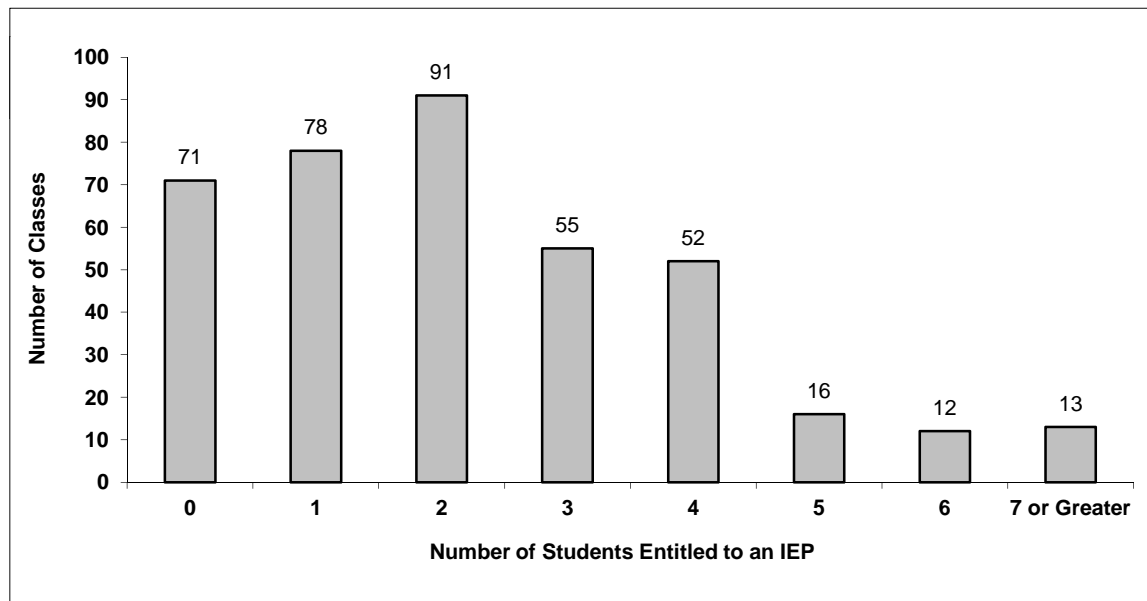
020 Kootenay-Columbia

Source: Class size data collection (as of October 15) from standard BC public schools.

Grades K-3 - Number of Classes in District with 'X' Number of Students Entitled to an IEP



Grades 4-12 - Number of Classes in District with 'X' Number of Students Entitled to an IEP

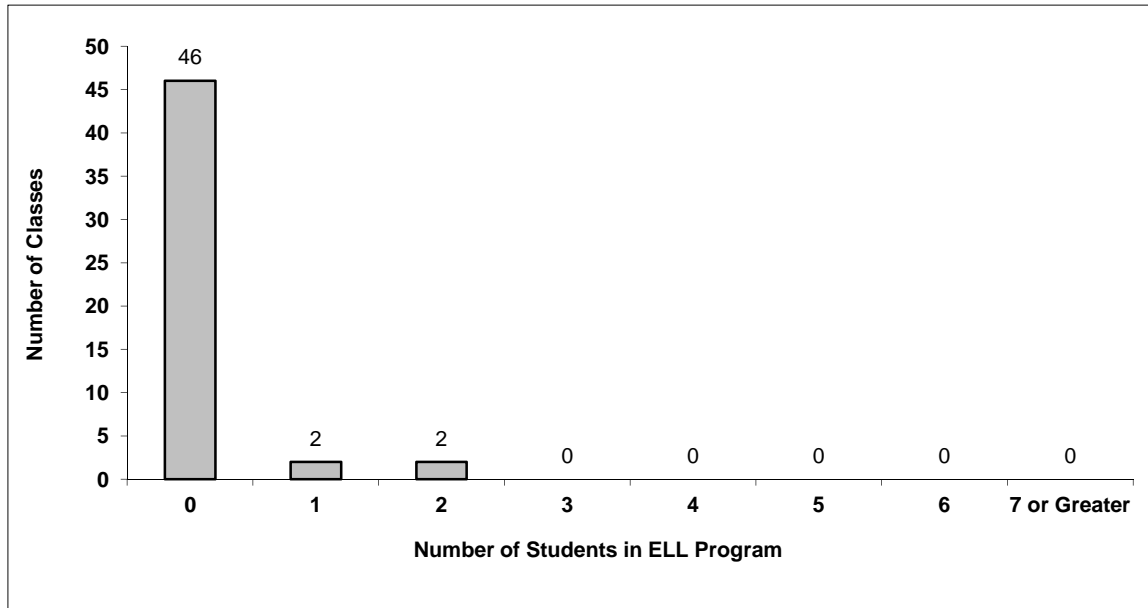


District - English Language Learners (ELL)

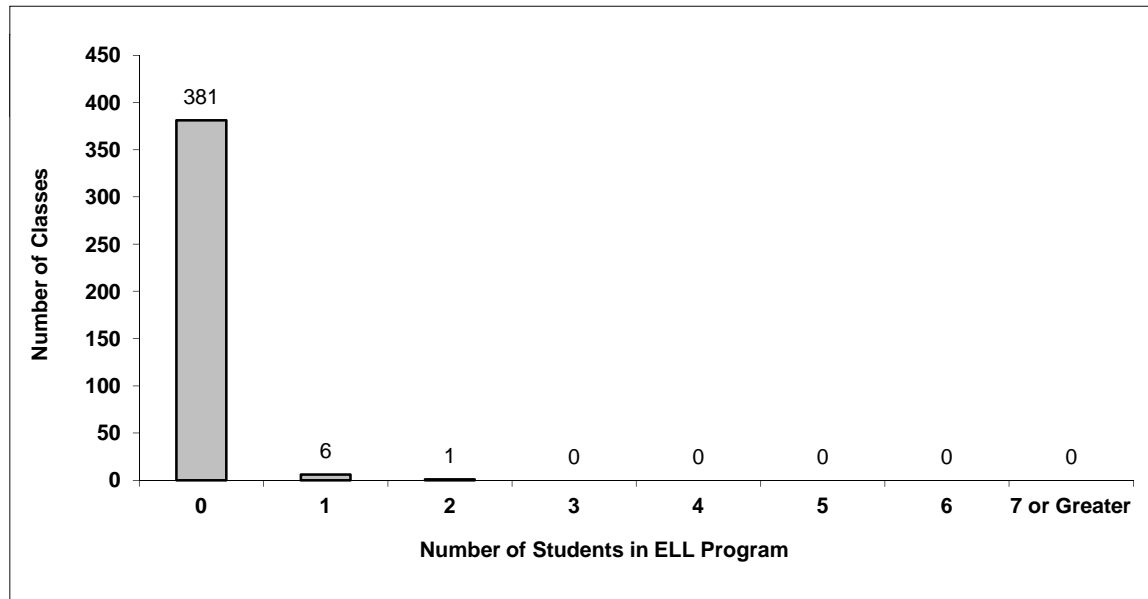
020 Kootenay-Columbia

Source: Class size data collection (as of October 15) from standard BC public schools.

Grades K-3 - Number of Classes in District with 'X' Number of ELL



Grades 4-12 - Number of Classes in District with 'X' Number of ELL



020 Kootenay-Columbia - Average Class Size by School

Source: Class size data collection (as of October 15) from standard BC public schools.

Ministry Code	School Name	Kindergarten	Grade 1 - 3	Grade 4 - 7	Grade 8 - 12
02009017	Castlegar Primary School	20.6	21.5	-	-
02011005	Fruitvale Elementary	21.2	22.1	28.2	-
02011015	Glenmerry Elementary	19.3	22.2	27.4	-
02011012	J Lloyd Crowe Secondary	-	-	-	24.4
02011009	James L Webster Elementary	16.5	20.9	25.7	-
02009006	Kinnaird Elementary	21.0	21.0	27.2	-
02011004	MacLean Elementary	21.5	20.8	24.0	-
02020021	Robson Community School	22.0	19.6	23.8	-
02011014	Rossland Secondary	-	-	30.0	20.2
02009010	Stanley Humphries Secondary	-	-	-	22.9
02009011	Twin Rivers Elementary	-	24.0	27.4	-

Glossary

Term	Definition / Notes
English Language Learners (ELL)	<ul style="list-style-type: none">• A program offered to students whose primary language(s) is/are other than English, and who may require additional services.
Grade	<ul style="list-style-type: none">• The assigned grade of a student on October 15.
K	<ul style="list-style-type: none">• Kindergarten
Number of Students	<ul style="list-style-type: none">• Student population is calculated by headcount.
Student	<ul style="list-style-type: none">• A person enrolled in a BC school. Student populations are calculated by headcount. Students include all adult and school-aged persons who are working toward a certificate of graduation.
Student Entitled to an Individual Education Plan	<ul style="list-style-type: none">• A student for whom an Individual Education Plan (IEP) must be designed under the Individual Education Plan order, Ministerial Order 638/95.