

Overview of Class Size and Composition in British Columbia Public Schools 2012/13

School District 008 Kootenay Lake

These class size data are current as of October 15, 2012 and have been verified by school districts.

PLEASE NOTE

The Ministry makes small and continuous improvements to the quality of its data. Sometimes these changes result in differences from previously published reports. The data in this report are the most accurate data available at time of publication.

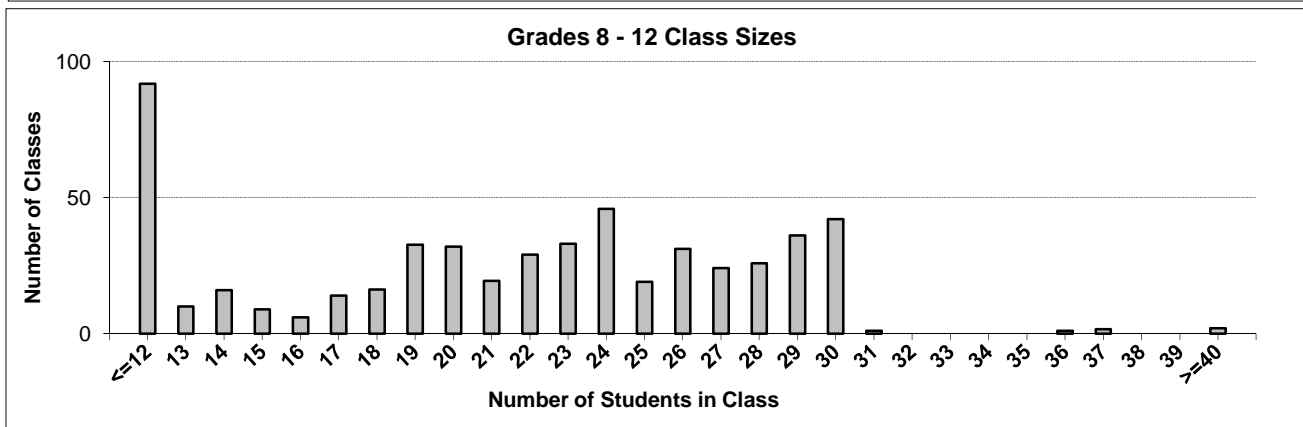
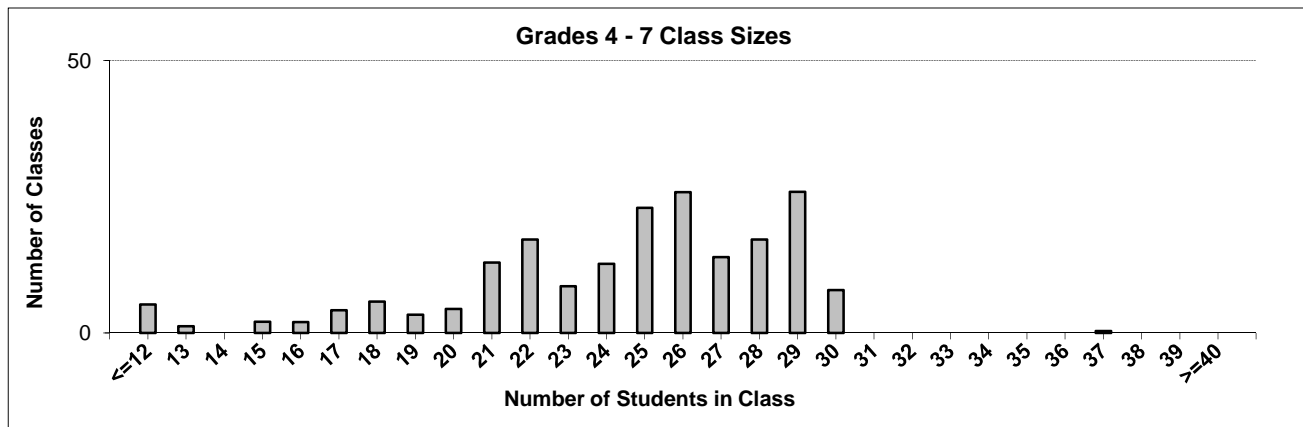
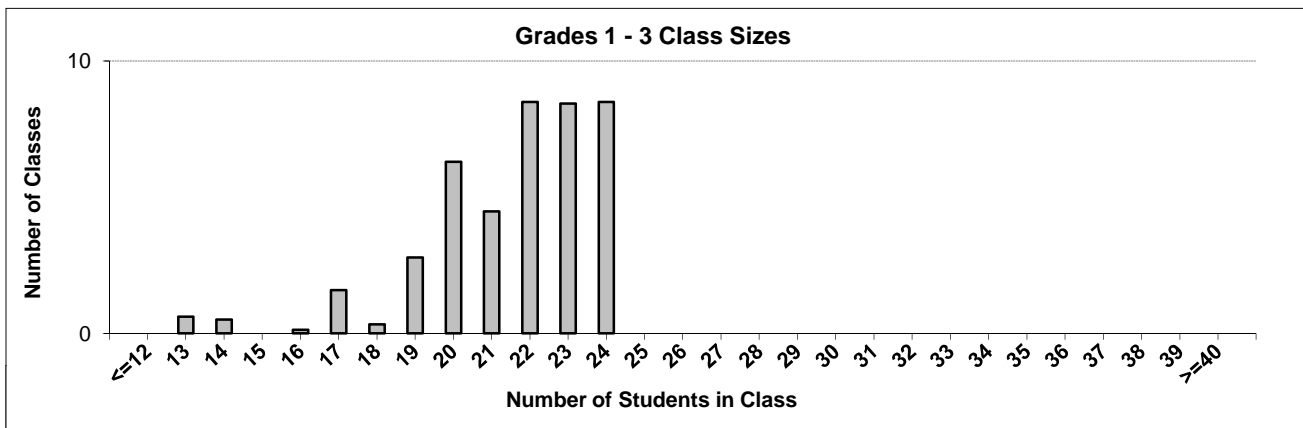
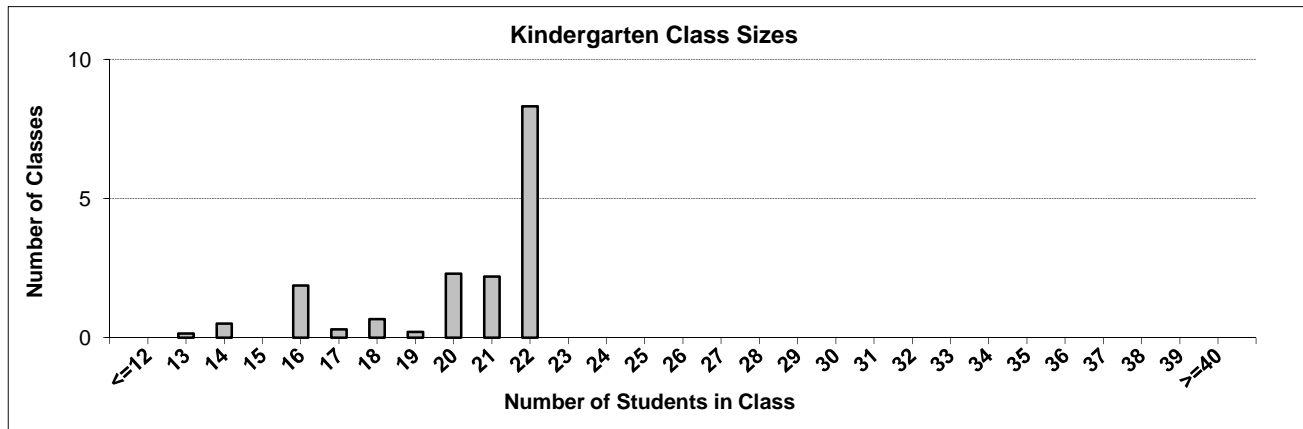
Ministry reports are available at <http://www.bced.gov.bc.ca/reporting/>

Contact the Business Intelligence Unit at educ.reportingunit@gov.bc.ca

District Class Sizes

008 Kootenay Lake

Source: Class size data collection (as of October 15) from standard BC public schools.



District - Average Class Size

008 Kootenay Lake

Source: Class size data collection (as of October 15) from standard BC public schools.

| | | | | |
|-------------------------------|--------------|-------------|-------------|--------------|
| District - Average Class Size | Kindergarten | Grade 1 - 3 | Grade 4 - 7 | Grade 8 - 12 |
| | 20.3 | 21.5 | 24.3 | 20.5 |

| | | | | |
|-------------------------------|--------------|-------------|-------------|--------------|
| Province - Average Class Size | Kindergarten | Grade 1 - 3 | Grade 4 - 7 | Grade 8 - 12 |
| | 19.0 | 21.1 | 25.4 | 23.3 |

| | |
|---------------------------------------------------------------|-----|
| Number of Reported Classes with Assigned Education Assistants | 131 |
|---------------------------------------------------------------|-----|

| | |
|----------------------------------------|----|
| Number of Reported Schools in District | 23 |
|----------------------------------------|----|

| | |
|----------------------------------------|-----|
| Number of Reported Classes in District | 791 |
|----------------------------------------|-----|

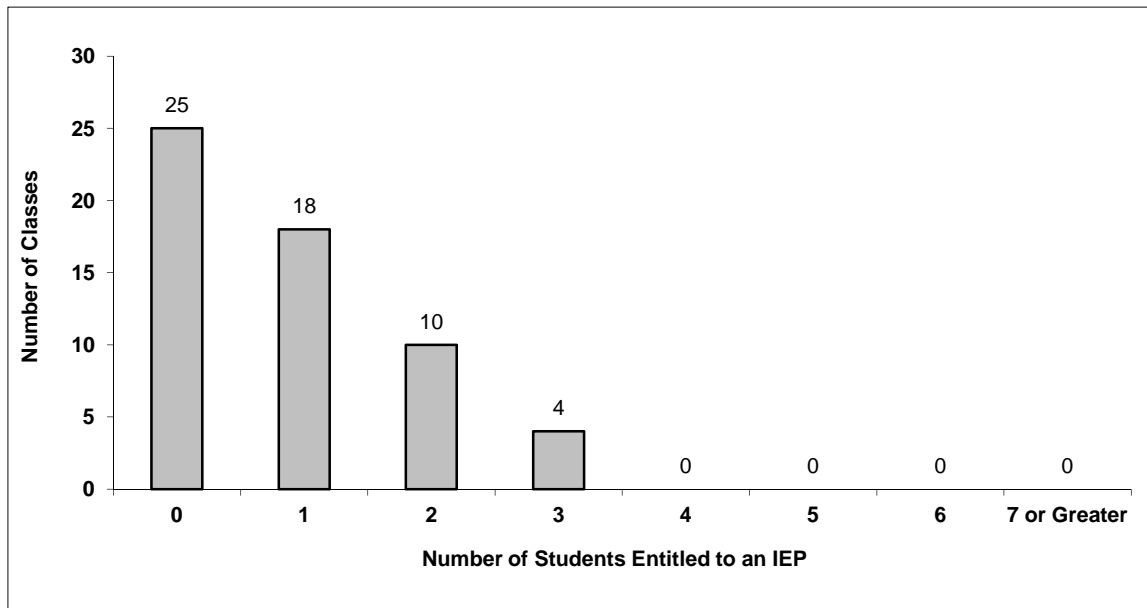
| | |
|-------------------------------------------------------------------|---|
| Number of Reported Classes in District with more than 30 Students | 6 |
|-------------------------------------------------------------------|---|

District - Students Entitled to an Individual Education Plan (IEP)

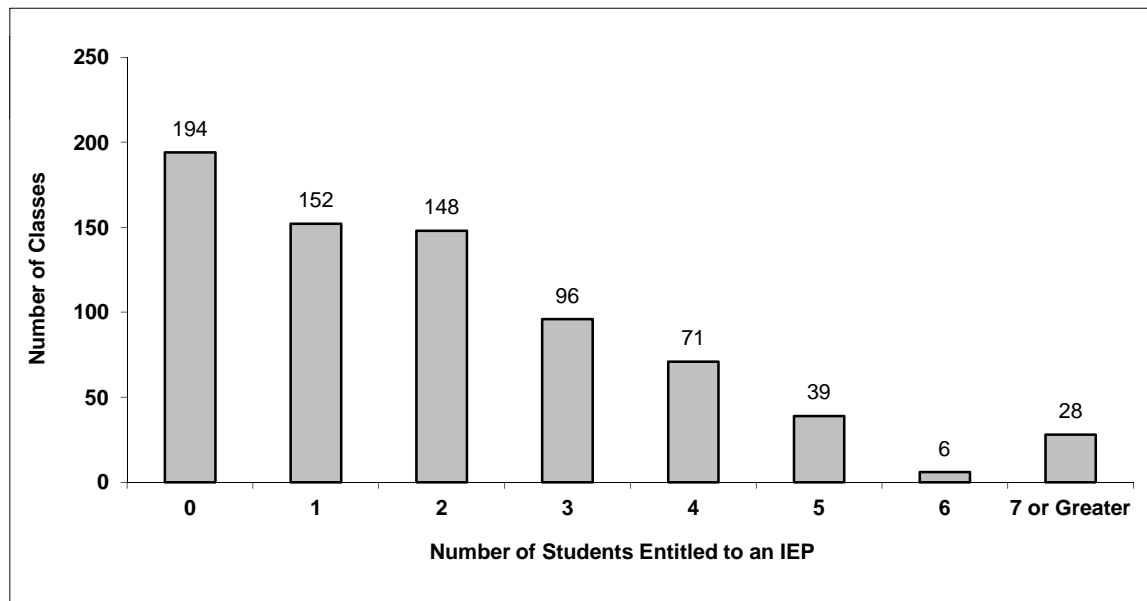
008 Kootenay Lake

Source: Class size data collection (as of October 15) from standard BC public schools.

Grades K-3 - Number of Classes in District with 'X' Number of Students Entitled to an IEP



Grades 4-12 - Number of Classes in District with 'X' Number of Students Entitled to an IEP

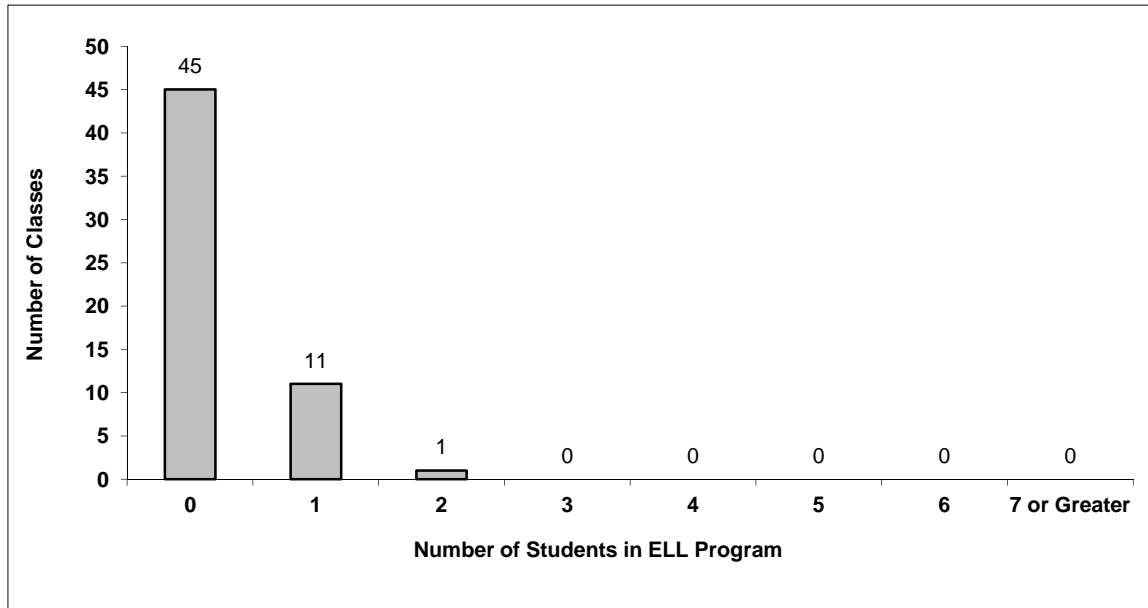


District - English Language Learners (ELL)

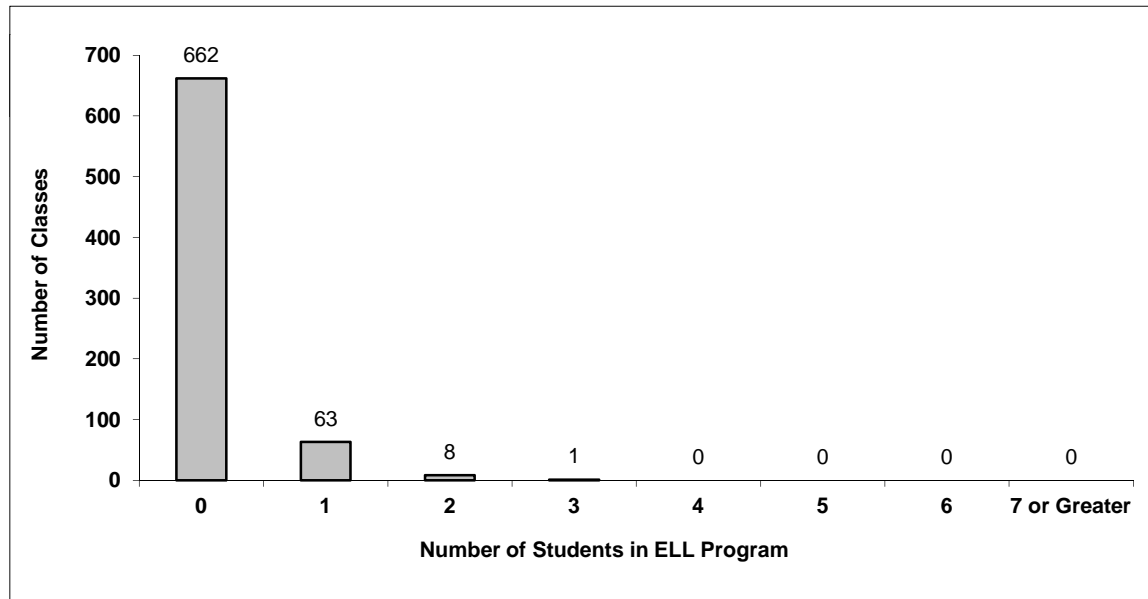
008 Kootenay Lake

Source: Class size data collection (as of October 15) from standard BC public schools.

Grades K-3 - Number of Classes in District with 'X' Number of ELL



Grades 4-12 - Number of Classes in District with 'X' Number of ELL



008 Kootenay Lake - Average Class Size by School

Source: Class size data collection (as of October 15) from standard BC public schools.

| Ministry Code | School Name | Kindergarten | Grade 1 - 3 | Grade 4 - 7 | Grade 8 - 12 |
|---------------|------------------------------|--------------|-------------|-------------|--------------|
| 00886004 | Adam Robertson Elementary | 22.0 | 23.2 | 26.5 | - |
| 00807016 | Blewett Elementary School | 22.0 | 21.6 | 22.9 | - |
| 00807033 | Brent Kennedy Elementary | 21.6 | 21.9 | 22.5 | - |
| 00886014 | Canyon/Lister Elementary | 18.0 | 21.9 | 26.3 | - |
| 00886006 | Crawford Bay Elem-Secondary | 20.0 | 20.0 | 14.3 | 10.4 |
| 00886019 | Erickson Elementary | 22.0 | 20.7 | 20.3 | - |
| 00807004 | Hume Elementary School | 22.0 | 21.2 | 24.6 | - |
| 00886018 | J V Humphries Elem-Secondary | 14.0 | 18.0 | 25.7 | 18.7 |
| 00886005 | Jewett Elementary | 21.0 | 21.0 | 21.0 | - |
| 00807013 | L V Rogers Secondary | - | - | - | 22.4 |
| 00807025 | Mount Sentinel Secondary | - | - | 24.6 | 18.1 |
| 00886007 | Prince Charles Secondary | - | - | - | 23.7 |
| 00899225 | REACH | - | - | - | 10.5 |
| 00807035 | Redfish Elementary School | 20.0 | 21.0 | 28.0 | - |
| 00807018 | Rosemont Elementary School | 20.7 | 20.3 | 23.0 | - |
| 00807011 | Salmo Elementary School | 21.7 | 22.6 | 28.6 | - |
| 00807012 | Salmo Secondary | - | - | 21.0 | 14.8 |
| 00807014 | South Nelson Elementary | 18.0 | 24.0 | 28.4 | - |
| 00807005 | Trafalgar Middle School | - | - | 24.8 | 22.5 |
| 00807026 | W.E. Graham Community School | 17.0 | 17.0 | 21.7 | 19.0 |
| 00899178 | Wildflower | - | 22.2 | 23.0 | 19.6 |
| 00807034 | Winlaw Elementary School | 16.0 | 22.5 | 24.5 | - |
| 00886012 | Yahk Elementary | 13.0 | 13.0 | 13.0 | - |

Glossary

| Term | Definition / Notes |
|--------------------------------------------------|---------------------------------------------------------------------------------------------------------------------------------------------------------------------------------------------------------------------------------------------|
| English Language Learners (ELL) | <ul style="list-style-type: none">• A program offered to students whose primary language(s) is/are other than English, and who may require additional services. |
| Grade | <ul style="list-style-type: none">• The assigned grade of a student on October 15. |
| K | <ul style="list-style-type: none">• Kindergarten |
| Number of Students | <ul style="list-style-type: none">• Student population is calculated by headcount. |
| Student | <ul style="list-style-type: none">• A person enrolled in a BC school. Student populations are calculated by headcount. Students include all adult and school-aged persons who are working toward a certificate of graduation. |
| Student Entitled to an Individual Education Plan | <ul style="list-style-type: none">• A student for whom an Individual Education Plan (IEP) must be designed under the Individual Education Plan order, Ministerial Order 638/95. |