

Overview of Class Size and Composition in British Columbia Public Schools 2012/13

School District 006 Rocky Mountain

These class size data are current as of October 15, 2012 and have been verified by school districts.

PLEASE NOTE

The Ministry makes small and continuous improvements to the quality of its data. Sometimes these changes result in differences from previously published reports. The data in this report are the most accurate data available at time of publication.

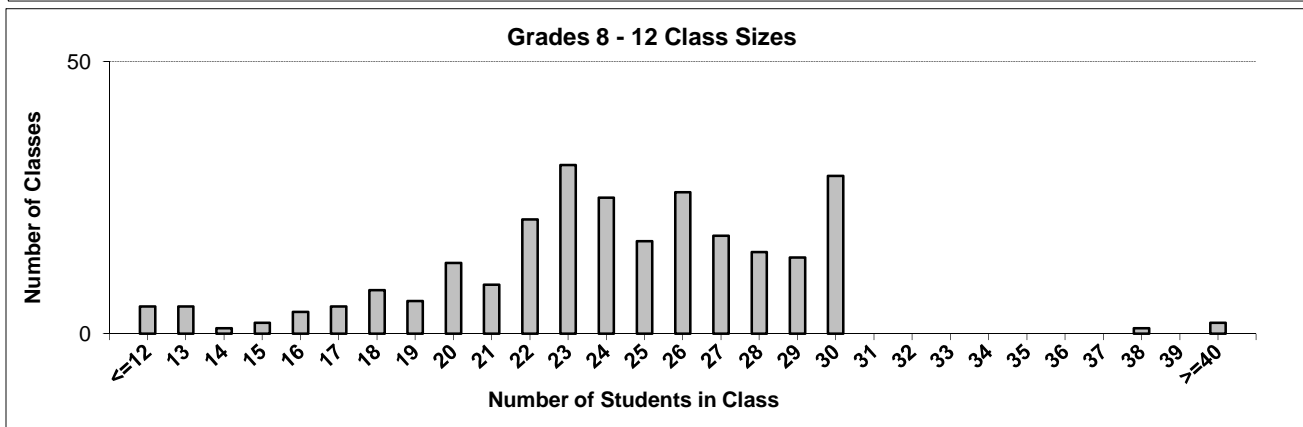
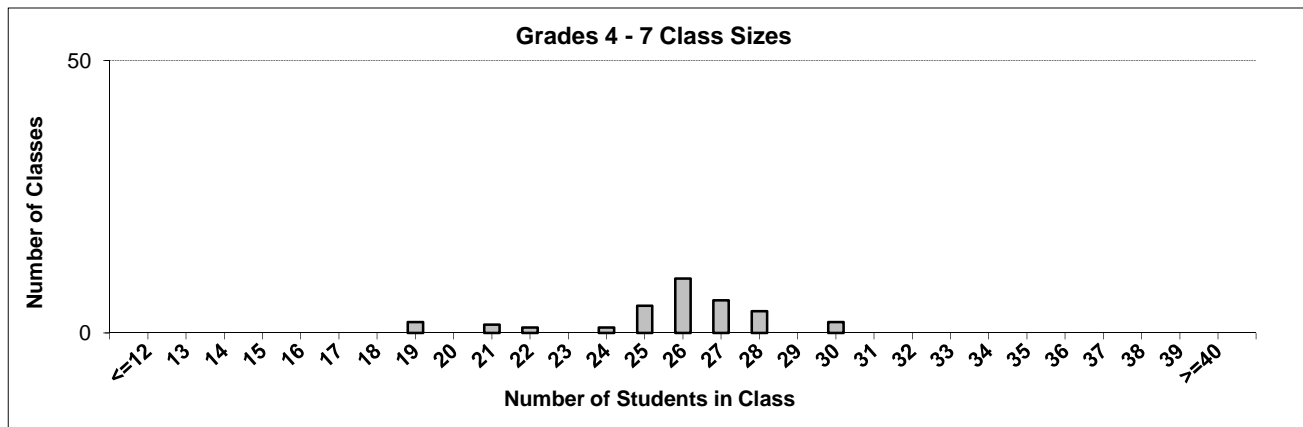
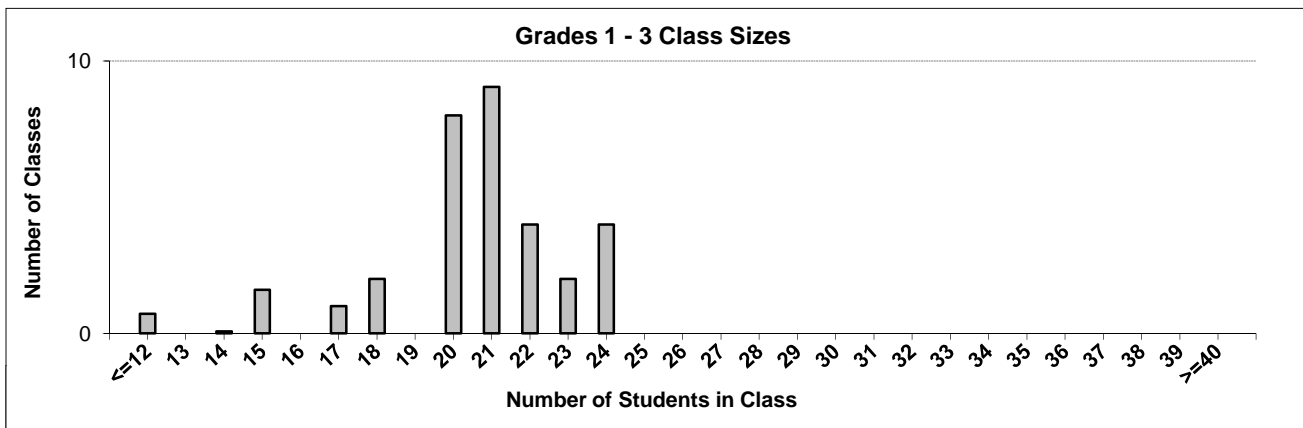
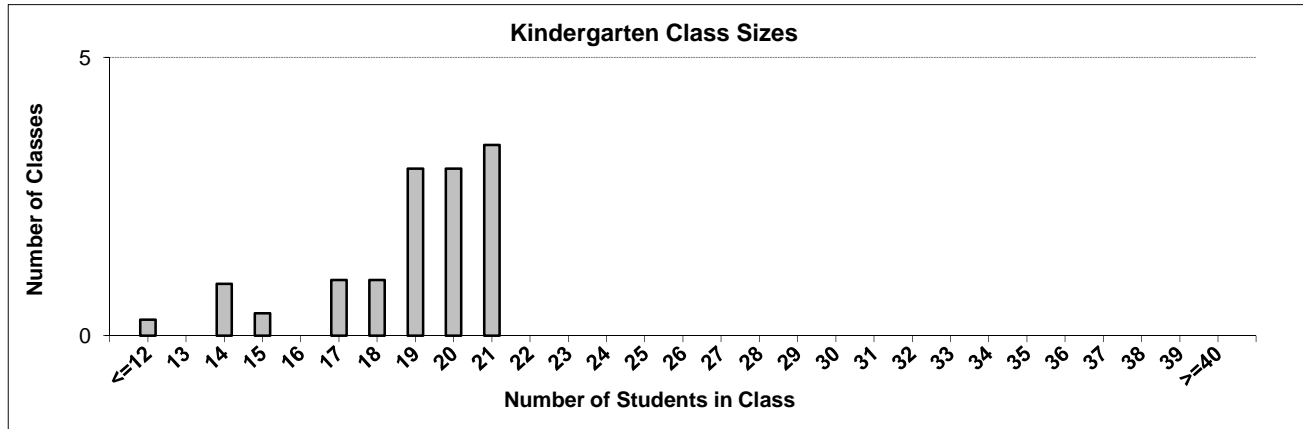
Ministry reports are available at <http://www.bced.gov.bc.ca/reporting/>

Contact the Business Intelligence Unit at educ.reportingunit@gov.bc.ca

District Class Sizes

006 Rocky Mountain

Source: Class size data collection (as of October 15) from standard BC public schools.



District - Average Class Size

006 Rocky Mountain

Source: Class size data collection (as of October 15) from standard BC public schools.

District - Average Class Size	Kindergarten	Grade 1 - 3	Grade 4 - 7	Grade 8 - 12
	18.8	20.4	25.7	24.0

Province - Average Class Size	Kindergarten	Grade 1 - 3	Grade 4 - 7	Grade 8 - 12
	19.0	21.1	25.4	23.3

Number of Reported Classes with Assigned Education Assistants	119
---	-----

Number of Reported Schools in District	15
--	----

Number of Reported Classes in District	335
--	-----

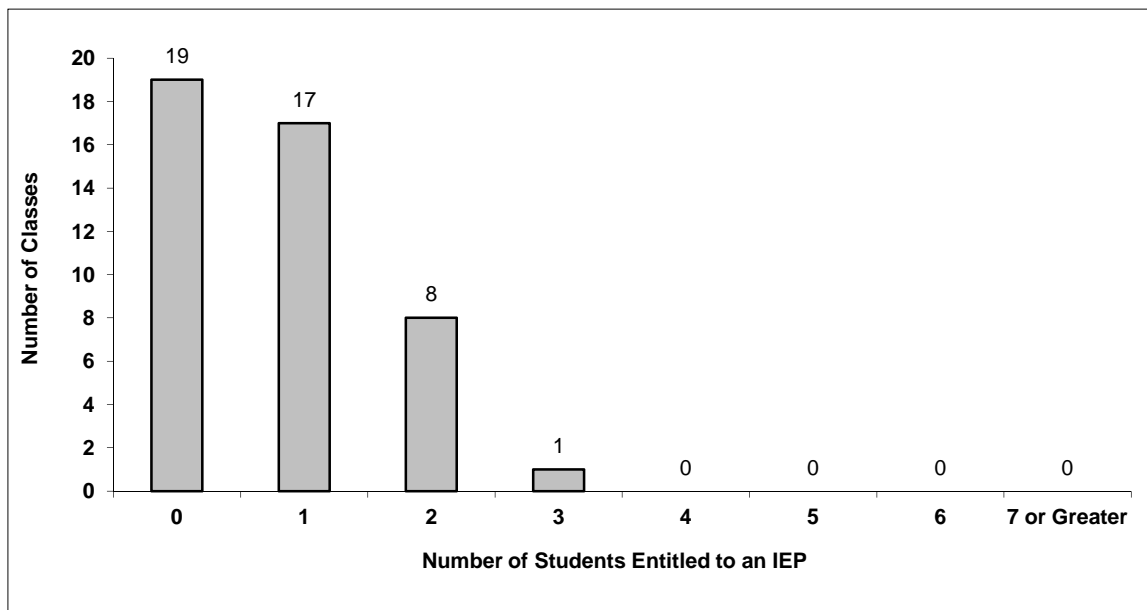
Number of Reported Classes in District with more than 30 Students	3
---	---

District - Students Entitled to an Individual Education Plan (IEP)

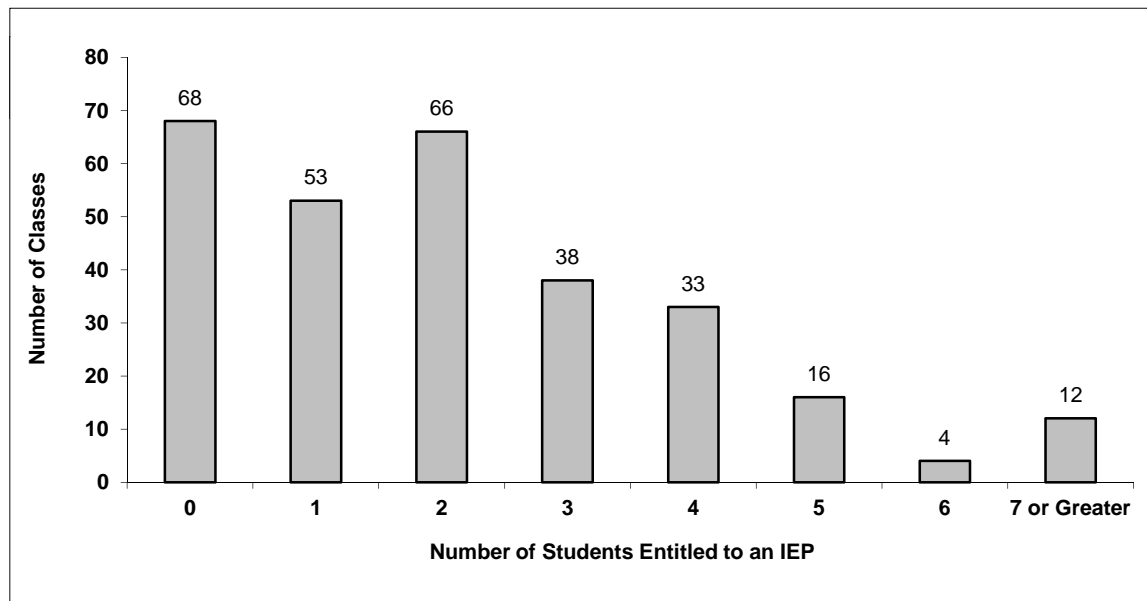
006 Rocky Mountain

Source: Class size data collection (as of October 15) from standard BC public schools.

Grades K-3 - Number of Classes in District with 'X' Number of Students Entitled to an IEP



Grades 4-12 - Number of Classes in District with 'X' Number of Students Entitled to an IEP

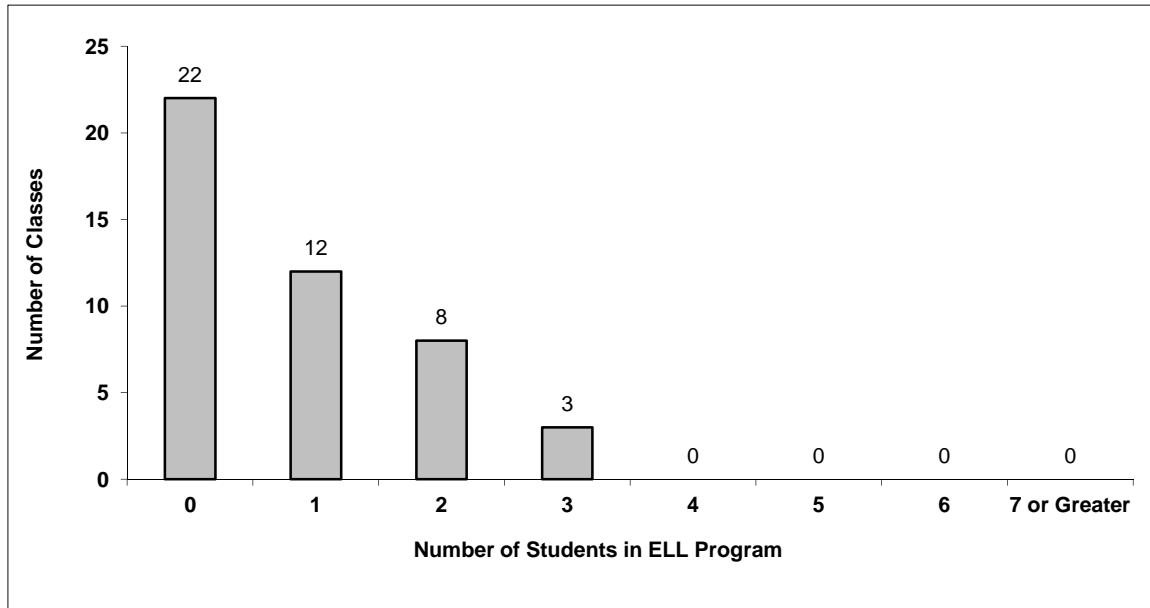


District - English Language Learners (ELL)

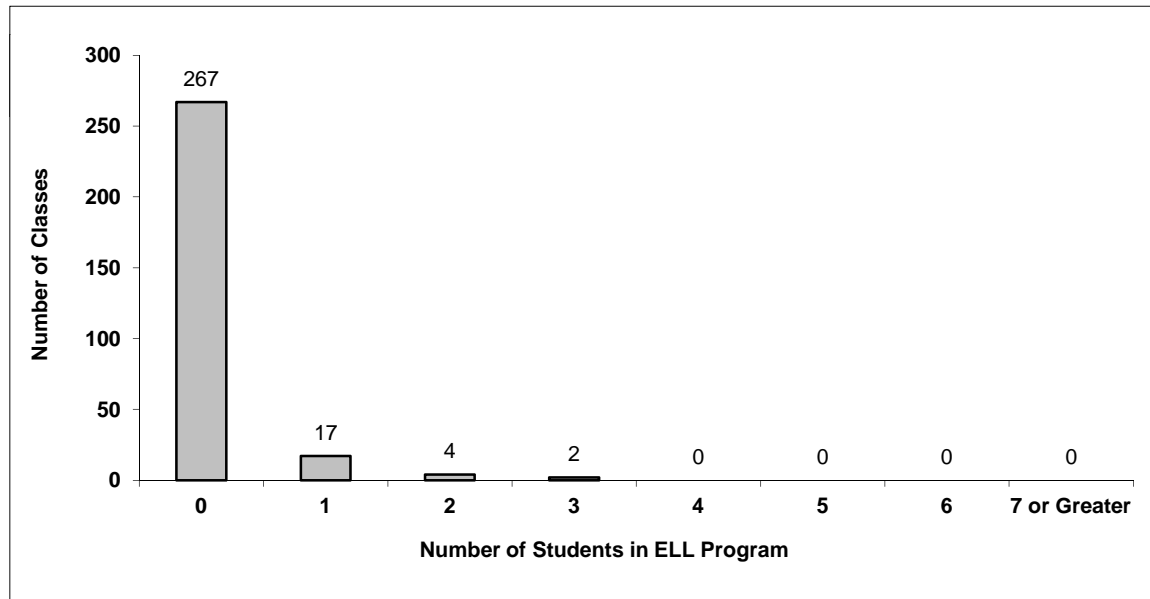
006 Rocky Mountain

Source: Class size data collection (as of October 15) from standard BC public schools.

Grades K-3 - Number of Classes in District with 'X' Number of ELL



Grades 4-12 - Number of Classes in District with 'X' Number of ELL



006 Rocky Mountain - Average Class Size by School

Source: Class size data collection (as of October 15) from standard BC public schools.

Ministry Code	School Name	Kindergarten	Grade 1 - 3	Grade 4 - 7	Grade 8 - 12
00618008	Alexander Park Elementary	19.0	20.7	-	-
00604015	David Thompson Secondary	-	-	-	24.0
00604011	Edgewater Elementary	14.0	20.7	21.0	-
00604014	Eileen Madson Primary School	20.6	20.8	-	-
00618006	Field Elementary	7.0	7.0	-	-
00618005	Golden Secondary	-	-	-	24.2
00604012	J Alfred Laird Elementary	-	-	25.2	-
00618003	Lady Grey Elementary	-	-	26.0	-
00603007	Lindsay Park Elementary	21.0	21.6	-	-
00604013	Martin Morigeau Elementary	15.0	18.8	25.0	-
00603005	Marysville Elementary	20.0	22.4	-	-
00606017	McKim Middle School	-	-	27.5	-
00618007	Nicholson Elementary	17.0	19.5	21.5	-
00603008	Selkirk Secondary School	-	-	-	23.8
00604007	Windermere Elementary	18.0	18.3	25.3	-

Glossary

Term	Definition / Notes
English Language Learners (ELL)	<ul style="list-style-type: none">• A program offered to students whose primary language(s) is/are other than English, and who may require additional services.
Grade	<ul style="list-style-type: none">• The assigned grade of a student on October 15.
K	<ul style="list-style-type: none">• Kindergarten
Number of Students	<ul style="list-style-type: none">• Student population is calculated by headcount.
Student	<ul style="list-style-type: none">• A person enrolled in a BC school. Student populations are calculated by headcount. Students include all adult and school-aged persons who are working toward a certificate of graduation.
Student Entitled to an Individual Education Plan	<ul style="list-style-type: none">• A student for whom an Individual Education Plan (IEP) must be designed under the Individual Education Plan order, Ministerial Order 638/95.