

Overview of Class Size and Composition in British Columbia Public Schools 2011/12

School District 091 Nechako Lakes

These class size data are current as of September 30, 2011 and have been verified by school districts.

PLEASE NOTE

The Ministry makes small and continuous improvements to the quality of its data. Sometimes these changes result in differences from previously published reports. The data in this report are the most accurate data available at time of publication.

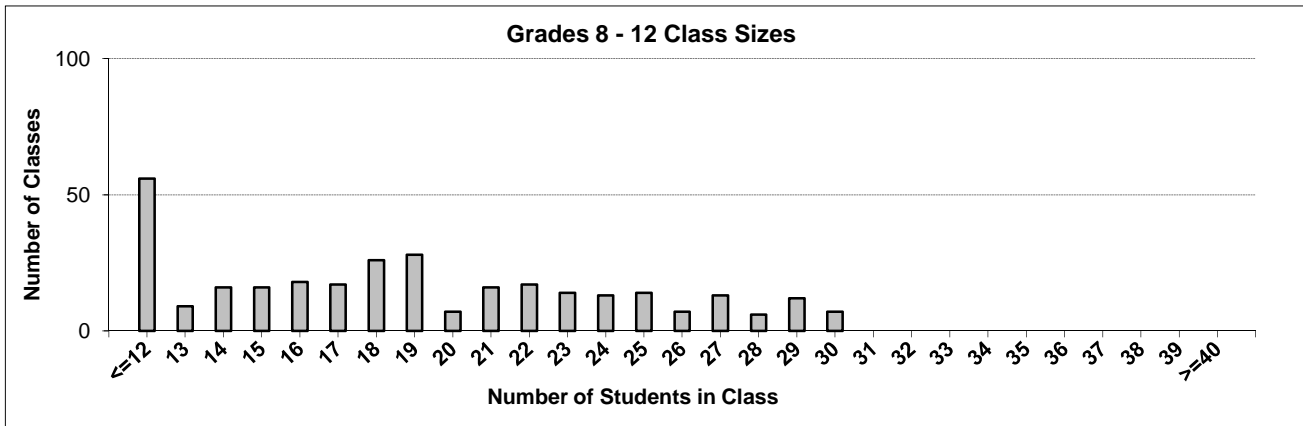
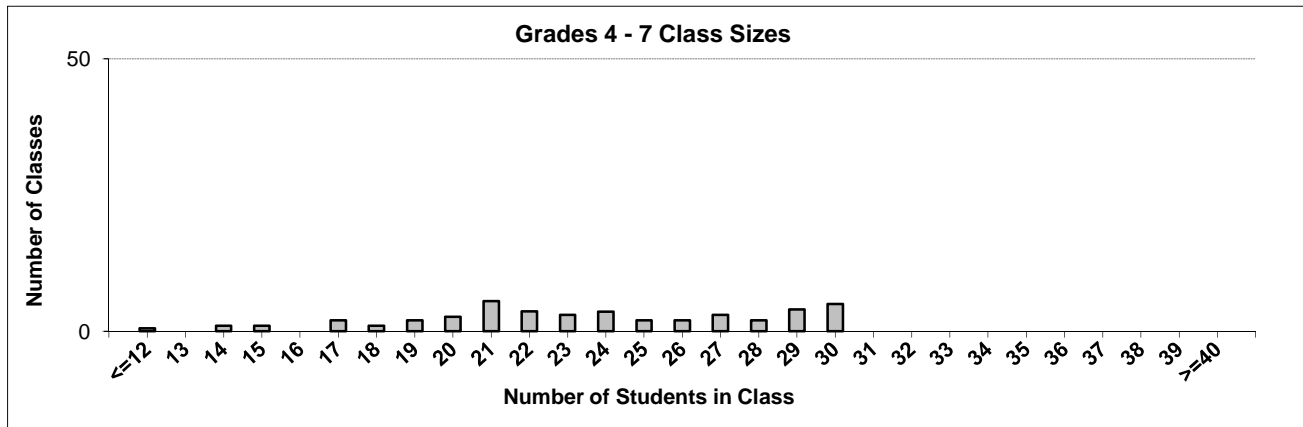
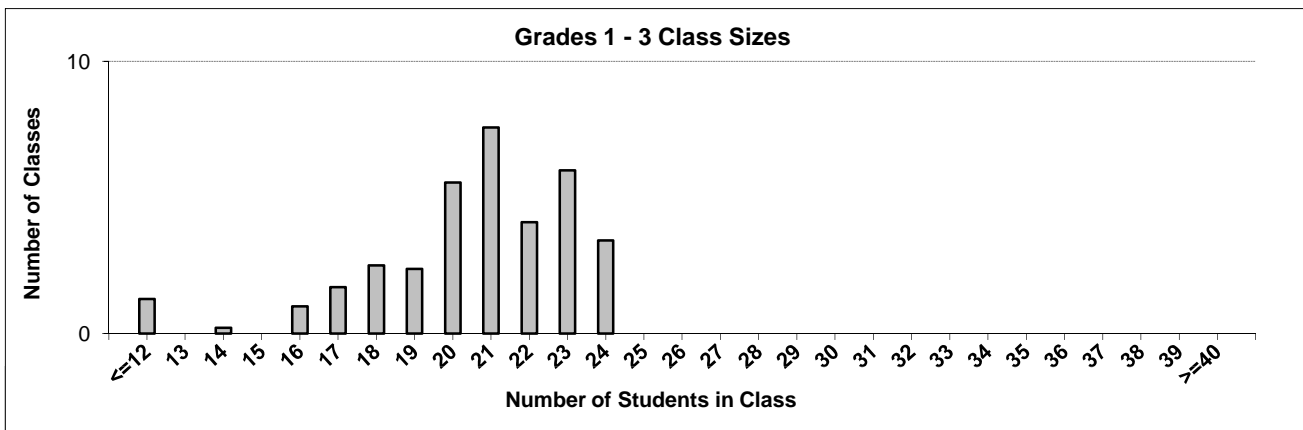
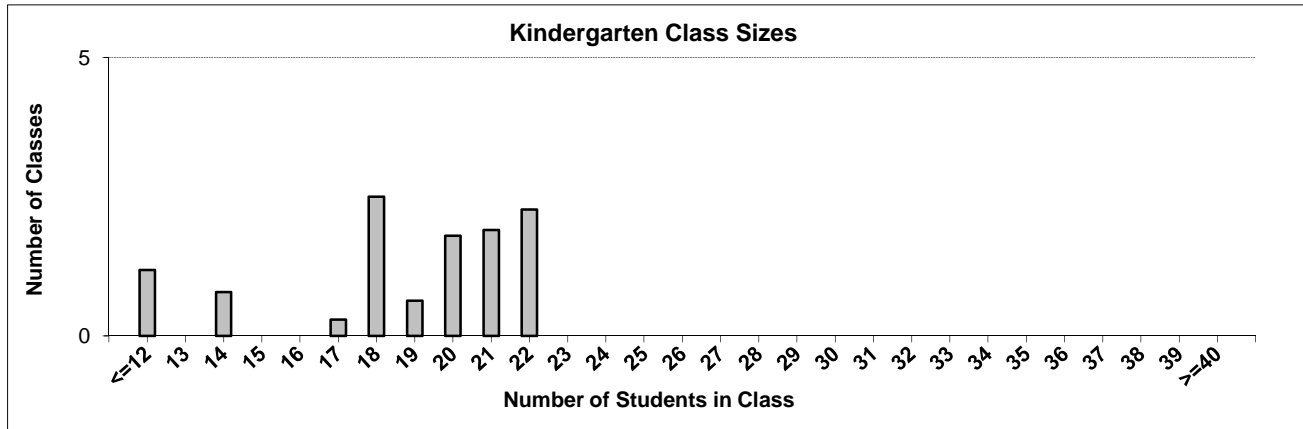
Ministry reports are available at <http://www.bced.gov.bc.ca/reporting/>

Contact the Information Department at educ.reportingunit@gov.bc.ca

District Class Sizes

091 Nechako Lakes

Source: Class size data collection (as of September 30) from standard BC public schools.



District - Average Class Size

091 Nechako Lakes

Source: Class size data collection (as of September 30) from standard BC public schools.

District - Average Class Size	Kindergarten	Grade 1 - 3	Grade 4 - 7	Grade 8 - 12
	18.1	20.2	23.5	18.3

Province - Average Class Size	Kindergarten	Grade 1 - 3	Grade 4 - 7	Grade 8 - 12
	18.5	20.6	25.9	25.0

Number of Reported Classes with Assigned Education Assistants	146
---	-----

Number of Reported Schools in District	18
--	----

Number of Reported Classes in District	403
--	-----

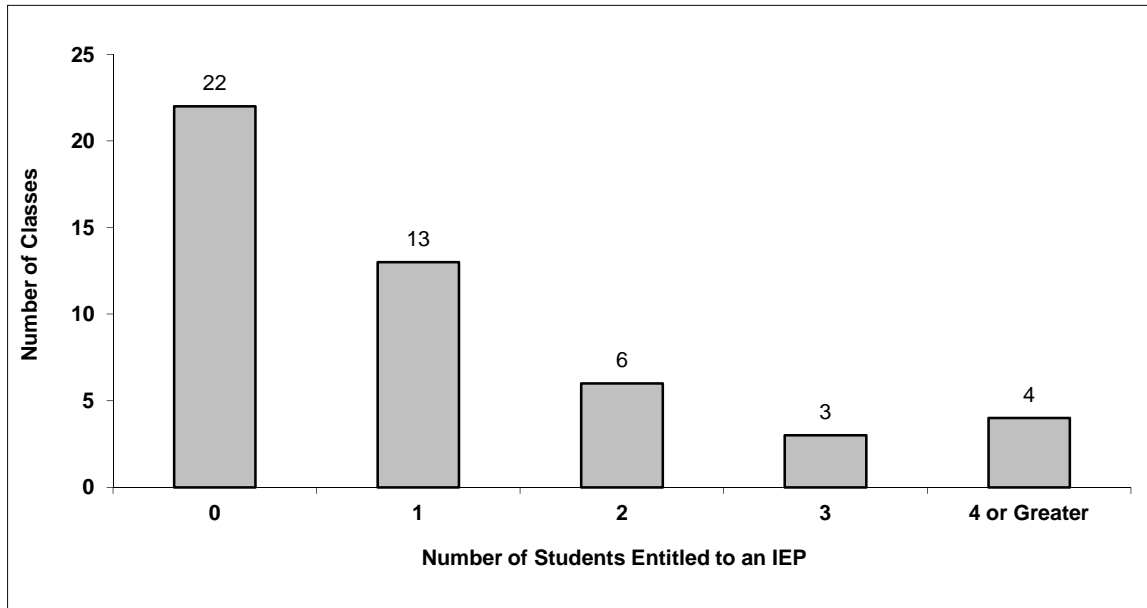
Number of Reported Classes in District with more than 30 Students	0
---	---

District - Students Entitled to an Individual Education Plan (IEP)

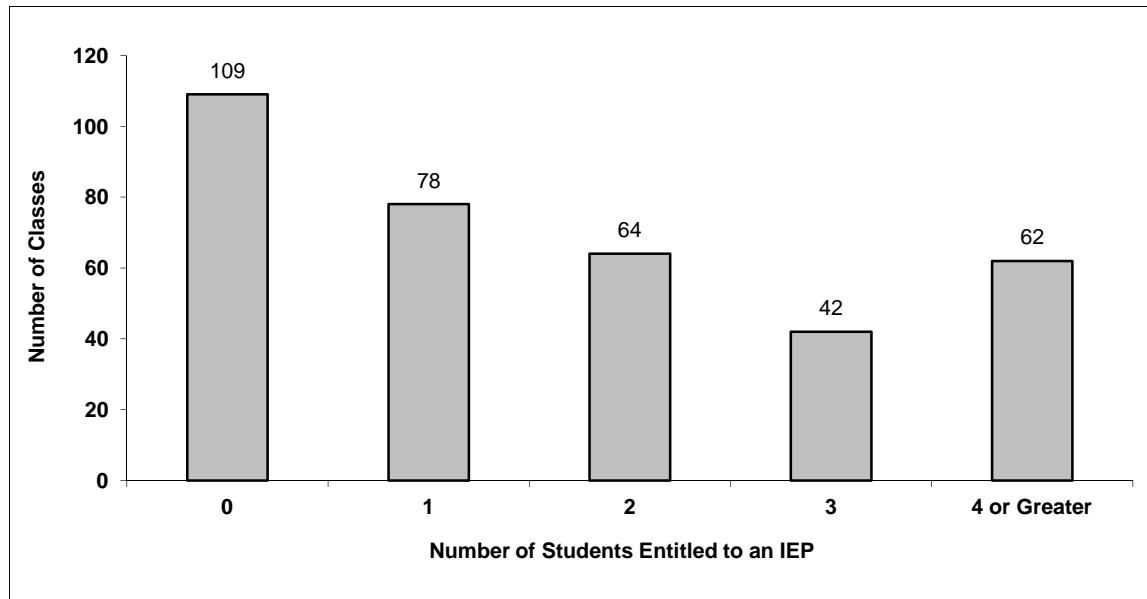
091 Nechako Lakes

Source: Class size data collection (as of September 30) from standard BC public schools.

Grades K-3 - Number of Classes in District with 'X' Number of Students Entitled to an IEP



Grades 4-12 - Number of Classes in District with 'X' Number of Students Entitled to an IEP

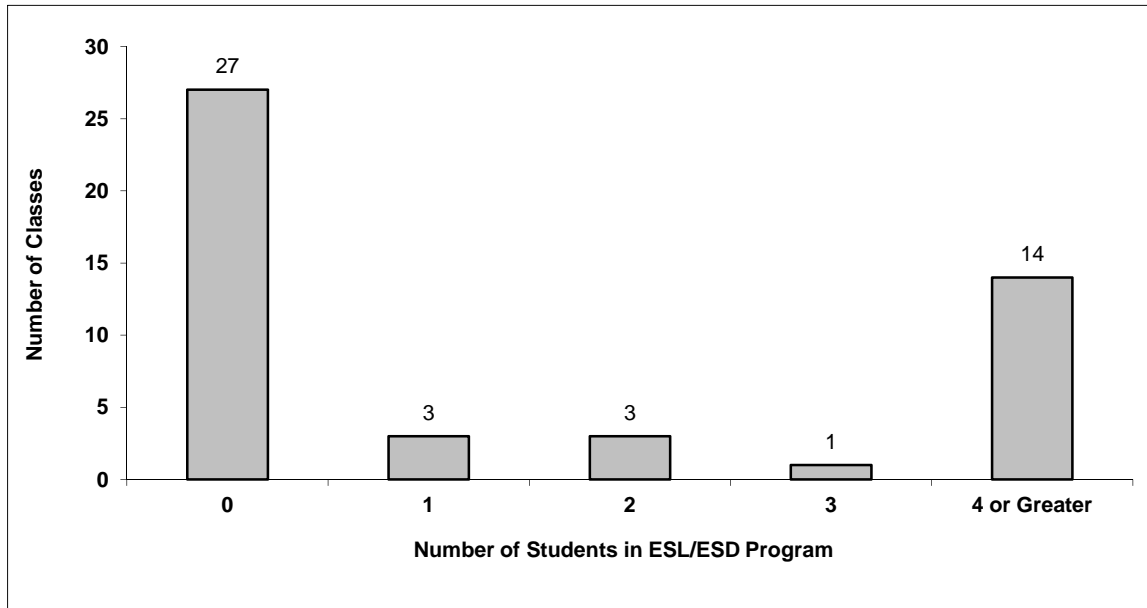


District - Students in English as a Second Language/Dialect (ESL/ESD) Program

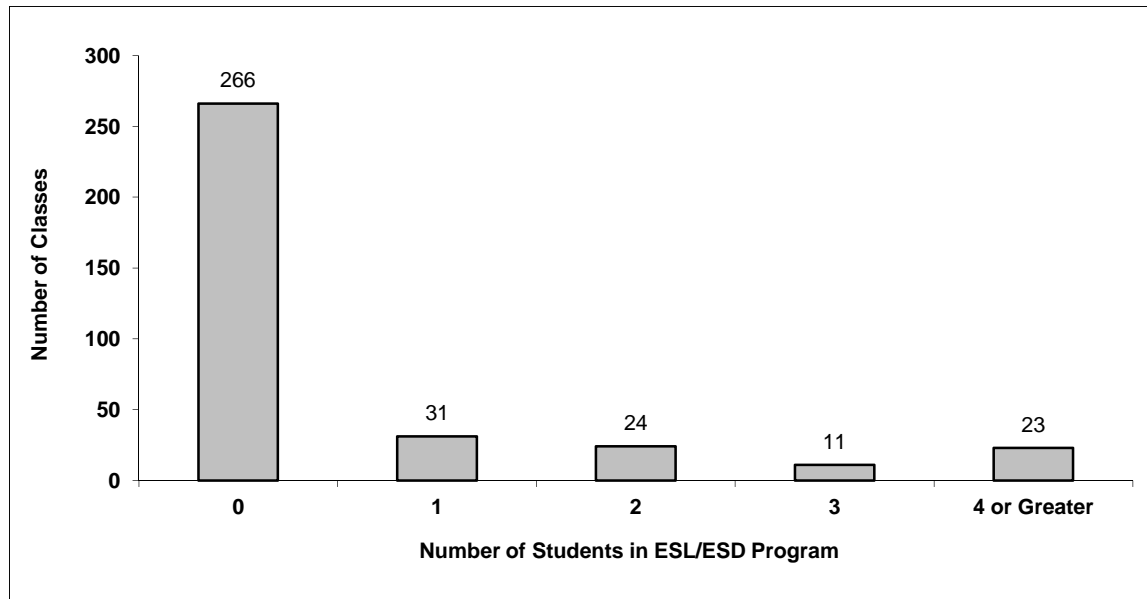
091 Nechako Lakes

Source: Class size data collection (as of September 30) from standard BC public schools.

Grades K-3 - Number of Classes in District with 'X' Number of Students in ESL/ESD Program



Grades 4-12 - Number of Classes in District with 'X' Number of Students in ESL/ESD Program



091 Nechako Lakes - Average Class Size by School

Source: Class size data collection (as of September 30) from standard BC public schools.

Ministry Code	School Name	Kindergarten	Grade 1 - 3	Grade 4 - 7	Grade 8 - 12
09155015	Babine Elem-Secondary	11.0	11.0	11.0	8.5
09156015	David Hoy Elementary	14.0	21.5	23.4	-
09191022	Decker Lake Elementary	21.0	21.9	27.5	-
09156013	Evelyn Dickson Elementary	22.0	23.6	27.4	-
09156005	Fort Fraser Elementary	18.0	20.7	16.0	-
09156007	Fort St James Secondary	-	-	-	15.5
09155004	Francois Lake Elementary	22.0	23.0	27.8	-
09156002	Fraser Lake Elem-Secondary	-	-	25.0	17.5
09155005	Grassy Plains School	20.0	20.4	20.3	9.6
09191023	Lakes District Secondary	-	-	-	20.3
09156001	Mapes Elementary School	5.0	18.0	19.0	-
09156019	Mouse Mountain Elementary	17.8	19.2	-	-
09156008	Nechako Valley Secondary	-	-	-	21.1
09156009	Prairiedale Elementary	18.0	21.7	-	-
09156010	Sinkutview Elementary	-	-	23.8	-
09156018	Sowchea Elementary	19.0	20.7	27.0	-
09156003	W L Mcleod Elementary	20.7	18.9	24.3	-
09155017	William Konkin Elementary	20.2	16.8	19.4	-

Glossary

Term	Definition / Notes
English as a Second Language/Dialect (ESL/ESD) Program	<ul style="list-style-type: none"> • A program offered to students whose primary language(s) is/are other than English, and who may require additional services.
Grade	<ul style="list-style-type: none"> • The assigned grade of a student on September 30.
KH	<ul style="list-style-type: none"> • Kindergarten half-time
KF	<ul style="list-style-type: none"> • Kindergarten full-time
Number of Students	<ul style="list-style-type: none"> • Student population is calculated by headcount.
Student	<ul style="list-style-type: none"> • A person enrolled in a BC school. Student populations are calculated by headcount. Students include all adult and school-aged persons who are working toward a certificate of graduation.
Student Entitled to an Individual Education Plan	<ul style="list-style-type: none"> • A student for whom an Individual Education Plan (IEP) must be designed under the Individual Education Plan order, Ministerial Order 638/95.

District - Rationales for Classes with More Than 30 Students

091 - Nechako Lakes

Source: Class size data collection (as of September 30) from standard BC public schools.

Under the *School Act* whenever a class in grades 4 to 12 exceeds 30 students, the principal and the superintendent must confirm that in their opinion, the learning conditions in that classroom are appropriate for the students. In addition, the principal must state the reasons or rationale for that class exceeding 30 students. If parents have questions regarding the information in this report, they should contact the school principal.

Ministry Code	School Name	Division/Class	No. of Students	Rationale
---------------	-------------	----------------	-----------------	-----------