

# **Overview of Class Size and Composition in British Columbia Public Schools 2011/12**

## **School District 082 Coast Mountains**

These class size data are current as of September 30, 2011 and have been verified by school districts.

---

### **PLEASE NOTE**

The Ministry makes small and continuous improvements to the quality of its data. Sometimes these changes result in differences from previously published reports. The data in this report are the most accurate data available at time of publication.

Ministry reports are available at <http://www.bced.gov.bc.ca/reporting/>

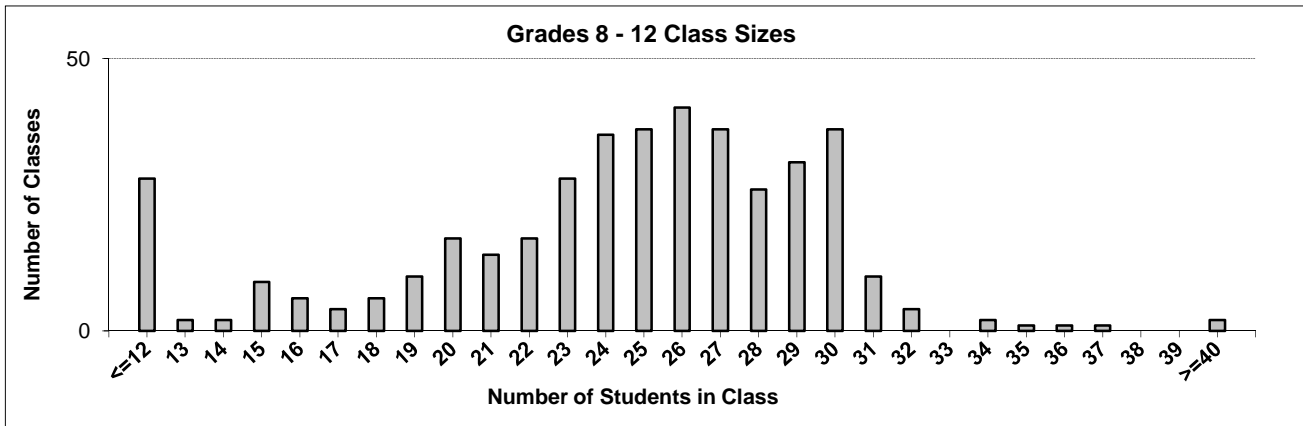
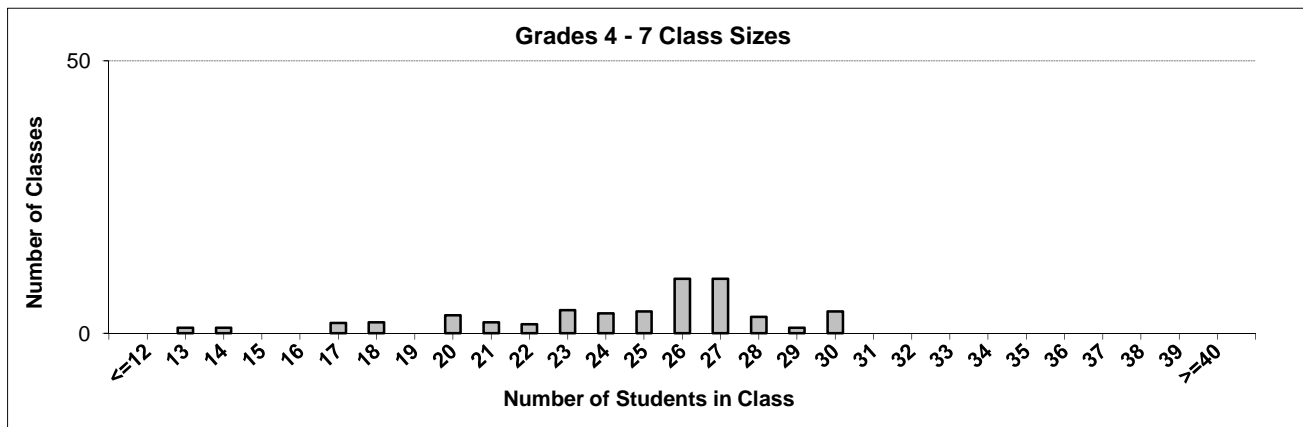
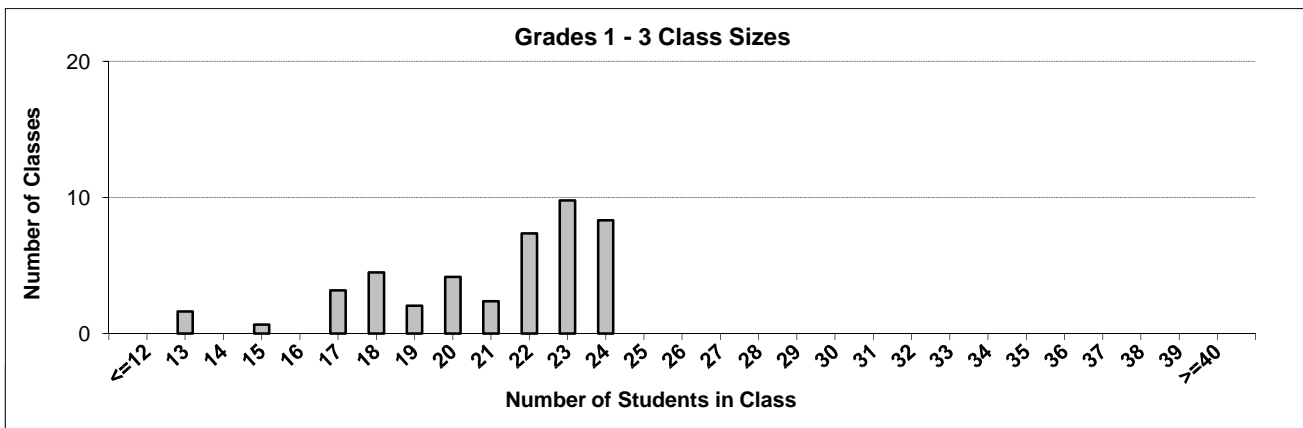
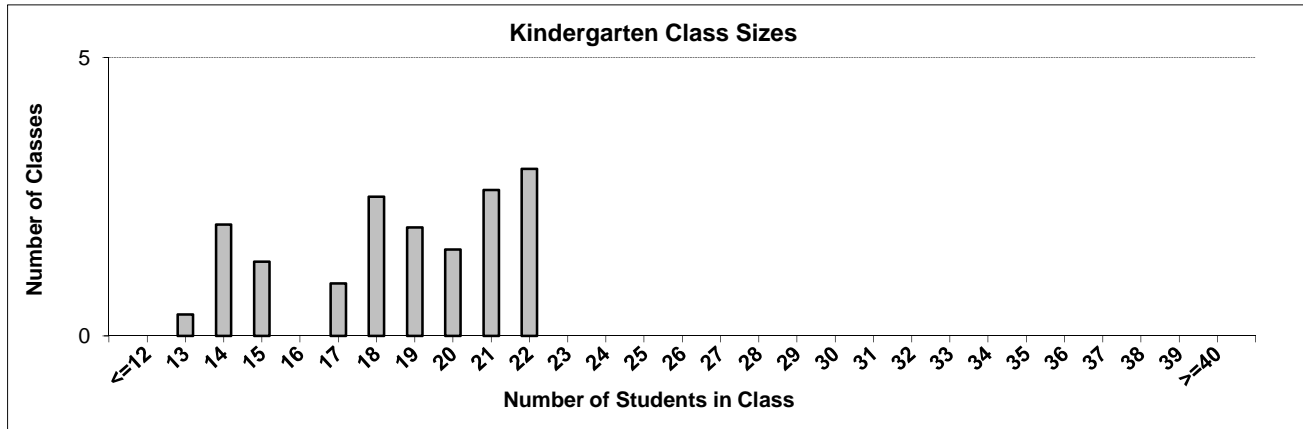
Contact the Information Department at [educ.reportingunit@gov.bc.ca](mailto:educ.reportingunit@gov.bc.ca)

---

# District Class Sizes

## 082 Coast Mountains

Source: Class size data collection (as of September 30) from standard BC public schools.



---

## District - Average Class Size

---

### 082 Coast Mountains

Source: Class size data collection (as of September 30) from standard BC public schools.

District - Average Class Size	Kindergarten	Grade 1 - 3	Grade 4 - 7	Grade 8 - 12
	18.6	21.0	24.4	24.0

Province - Average Class Size	Kindergarten	Grade 1 - 3	Grade 4 - 7	Grade 8 - 12
	18.5	20.6	25.9	25.0

Number of Reported Classes with Assigned Education Assistants	197
---	-----

Number of Reported Schools in District	17
--	----

Number of Reported Classes in District	522
--	-----

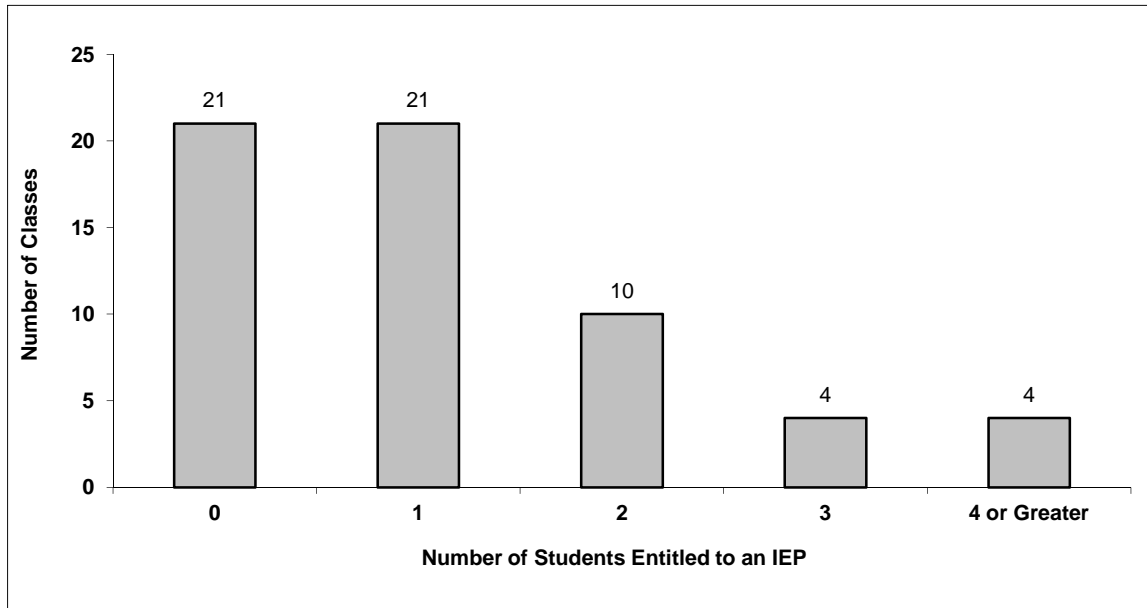
Number of Reported Classes in District with more than 30 Students	21
---	----

# District - Students Entitled to an Individual Education Plan (IEP)

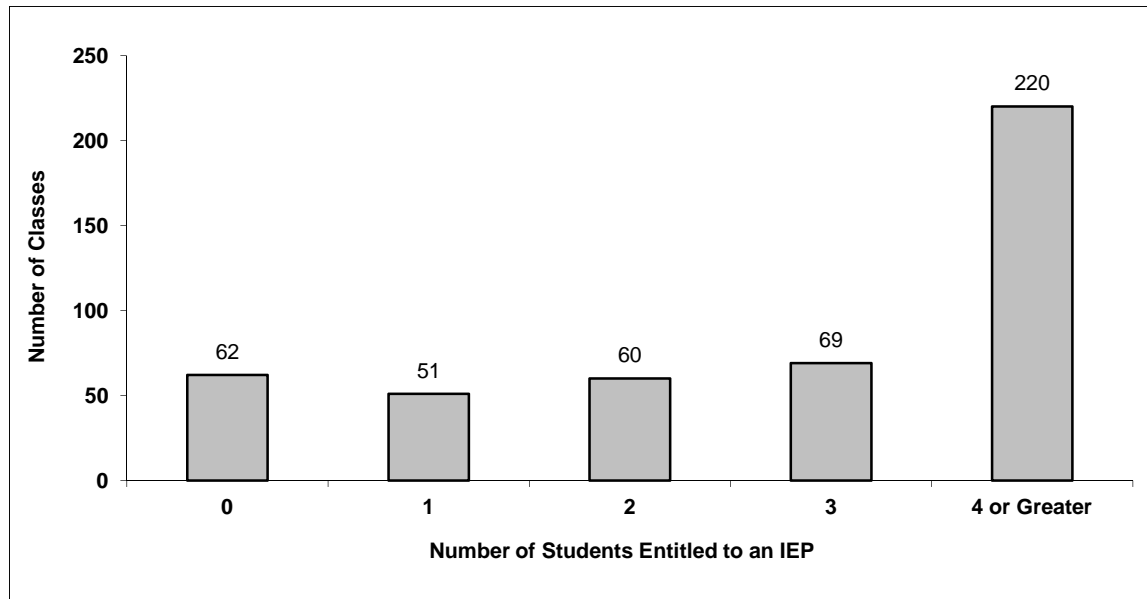
## 082 Coast Mountains

Source: Class size data collection (as of September 30) from standard BC public schools.

Grades K-3 - Number of Classes in District with 'X' Number of Students Entitled to an IEP



Grades 4-12 - Number of Classes in District with 'X' Number of Students Entitled to an IEP

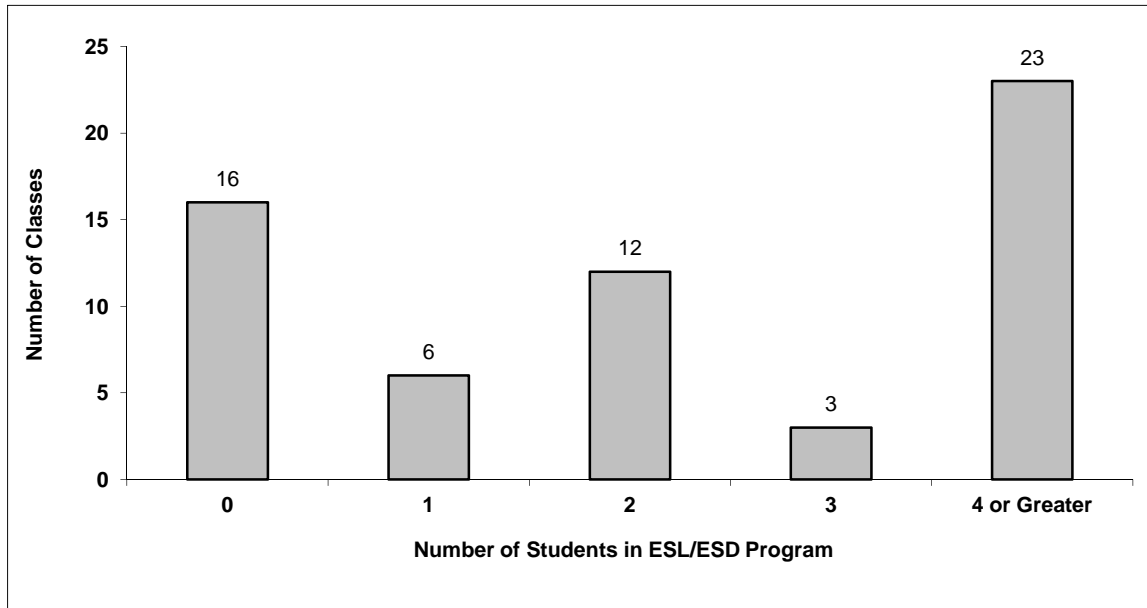


# District - Students in English as a Second Language/Dialect (ESL/ESD) Program

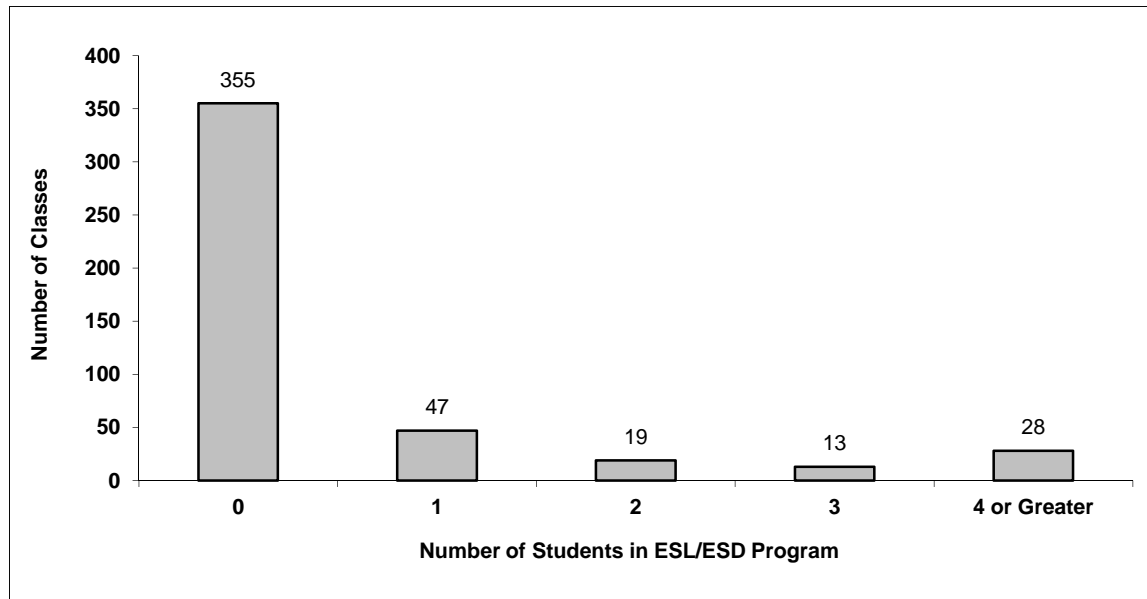
## 082 Coast Mountains

Source: Class size data collection (as of September 30) from standard BC public schools.

Grades K-3 - Number of Classes in District with 'X' Number of Students in ESL/ESD Program



Grades 4-12 - Number of Classes in District with 'X' Number of Students in ESL/ESD Program



## 082 Coast Mountains - Average Class Size by School

Source: Class size data collection (as of September 30) from standard BC public schools.

Ministry Code	School Name	Kindergarten	Grade 1 - 3	Grade 4 - 7	Grade 8 - 12
08288028	Bear Valley School	15.0	18.8	18.7	11.7
08288024	Caledonia Sr Secondary	-	-	-	24.9
08288013	Cassie Hall Elementary	14.0	21.8	25.3	-
08288020	Ecole Mountainview	18.8	18.5	22.0	-
08288006	Hazelton Secondary	-	-	-	23.9
08288018	John Field Elementary	20.2	20.6	17.4	-
08280004	Kildala Elementary	18.1	21.7	21.5	-
08288030	Kitwanga Elementary	18.0	17.4	22.5	-
08280002	Mount Elizabeth Secondary	-	-	-	23.7
08280001	Nechako Elementary School	19.0	23.6	26.7	-
08288008	New Hazelton Elementary	18.6	22.1	23.7	-
08282037	Skeena Junior Secondary	-	-	-	25.6
08288016	Suwilaawks Community School	16.5	22.2	24.7	-
08288014	Thornhill Elementary	-	-	26.1	-
08288029	Thornhill Jr Secondary	-	-	-	22.2
08288022	Thornhill Primary	21.6	18.7	-	-
08288012	Uplands Elementary	21.5	23.1	28.6	-

## Glossary

Term	Definition / Notes
<b>English as a Second Language/Dialect (ESL/ESD) Program</b>	<ul style="list-style-type: none"> <li>• A program offered to students whose primary language(s) is/are other than English, and who may require additional services.</li> </ul>
<b>Grade</b>	<ul style="list-style-type: none"> <li>• The assigned grade of a student on September 30.</li> </ul>
<b>KH</b>	<ul style="list-style-type: none"> <li>• Kindergarten half-time</li> </ul>
<b>KF</b>	<ul style="list-style-type: none"> <li>• Kindergarten full-time</li> </ul>
<b>Number of Students</b>	<ul style="list-style-type: none"> <li>• Student population is calculated by headcount.</li> </ul>
<b>Student</b>	<ul style="list-style-type: none"> <li>• A person enrolled in a BC school. Student populations are calculated by headcount. Students include all adult and school-aged persons who are working toward a certificate of graduation.</li> </ul>
<b>Student Entitled to an Individual Education Plan</b>	<ul style="list-style-type: none"> <li>• A student for whom an Individual Education Plan (IEP) must be designed under the Individual Education Plan order, Ministerial Order 638/95.</li> </ul>



## District - Rationales for Classes with More Than 30 Students

### 082 - Coast Mountains

Source: Class size data collection (as of September 30) from standard BC public schools.

Under the *School Act* whenever a class in grades 4 to 12 exceeds 30 students, the principal and the superintendent must confirm that in their opinion, the learning conditions in that classroom are appropriate for the students. In addition, the principal must state the reasons or rationale for that class exceeding 30 students. If parents have questions regarding the information in this report, they should contact the school principal.

Ministry Code	School Name	Division/Class	No. of Students	Rationale
08280002	Mount Elizabeth Secondary	SOCIAL STUDIES 9 (02)	31	This class has one designated student.
08280002	Mount Elizabeth Secondary	MATHEMATICS 8 (01)	32	Additional resources have been provided to assist the teacher in meeting the needs of all learners.
08280002	Mount Elizabeth Secondary	ENGLISH 10 (02)	31	This class now has 30 students.
08280002	Mount Elizabeth Secondary	LD LOCALLY DEVELOPED 8A (01)	31	EA support has been added to this class to support the learning of students.
08280002	Mount Elizabeth Secondary	MATHEMATICS 8 (02)	31	Additional resources have been provided to assist the teacher in meeting the needs of all learners.
08280002	Mount Elizabeth Secondary	ENGLISH 12 (01)	34	Additional resources have been provided to assist the teacher in meeting the needs of all learners.
08280002	Mount Elizabeth Secondary	ENGLISH LANGUAGE ARTS 8 (01)	31	Additional resources have been provided to assist the teacher in meeting the needs of all learners.
08280002	Mount Elizabeth Secondary	INSTRUMENTAL MUSIC 11: CONCERT BAND (01), INSTRUMENTAL MUSIC 12: CONCERT BAND (0)	60	Class has been split into two sections making the group more manageable.
08280002	Mount Elizabeth Secondary	MATHEMATICS 9 (01)	31	This class has no designated students.
08280002	Mount Elizabeth Secondary	PLANNING 10 (01)	34	EA support has been added to this class to support the learning of students.
08280002	Mount Elizabeth Secondary	WRITING 12 (01)	32	Additional resources have been provided to assist the teacher in meeting the needs of all learners.
08288006	Hazelton Secondary	GRADUATION TRANSITIONS (01)	67	This class is an online class and is supported by a teacher.
08288006	Hazelton Secondary	PHYSICAL EDUCATION 10 (01), PHYSICAL EDUCATION 9 (01)	32	PE classes are shared between two teachers and are manageable without an SSA.
08288006	Hazelton Secondary	APPRENTICESHIP AND WORKPLACE MATH 11 (01)	31	There is an SSA in class and FNSW available to assist.
08288006	Hazelton Secondary	PHYSICAL EDUCATION 10 (04), PHYSICAL EDUCATION 11 (01), PHYSICAL EDUCATION 12 (0)	37	PE classes are shared between two teachers and are manageable between two teachers.

## District - Rationales for Classes with More Than 30 Students

### 082 - Coast Mountains

Source: Class size data collection (as of September 30) from standard BC public schools.

Under the *School Act* whenever a class in grades 4 to 12 exceeds 30 students, the principal and the superintendent must confirm that in their opinion, the learning conditions in that classroom are appropriate for the students. In addition, the principal must state the reasons or rationale for that class exceeding 30 students. If parents have questions regarding the information in this report, they should contact the school principal.

Ministry Code	School Name	Division/Class	No. of Students	Rationale
08288006	Hazelton Secondary	BIOLOGY 11 (01)	32	This is a high academic class. If students need extra support the resource room is available as is a FNSW.
08288006	Hazelton Secondary	PHYSICAL EDUCATION 10 (05), PHYSICAL EDUCATION 11 (02), PHYSICAL EDUCATION 12 (0)	35	PE classes are shared between two teachers and are manageable between two teachers.
08288024	Caledonia Sr Secondary	INSTRUMENTAL MUSIC 11: CONCERT BAND (01), INSTRUMENTAL MUSIC 12: CONCERT BAND (0)	36	Teacher is used to working with over 40 in his band class
08288024	Caledonia Sr Secondary	BA EDUCATION 11A (11), BA PSYCHOLOGY 11A (02)	31	Teacher requested the extra student as an aid to the class.
08288024	Caledonia Sr Secondary	BA EDUCATION 11A (05), STUDIO ARTS 11: DRAWING AND PAINTING (01), STUDIO ARTS 12	31	Teacher asked for the extra student to aid with the class
08288024	Caledonia Sr Secondary	ENGLISH 12 (01)	31	After discussing with teacher we believed the addition of the one student would not impede the success of others in the class.