

Overview of Class Size and Composition in British Columbia Public Schools 2011/12

School District 079 Cowichan Valley

These class size data are current as of September 30, 2011 and have been verified by school districts.

PLEASE NOTE

The Ministry makes small and continuous improvements to the quality of its data. Sometimes these changes result in differences from previously published reports. The data in this report are the most accurate data available at time of publication.

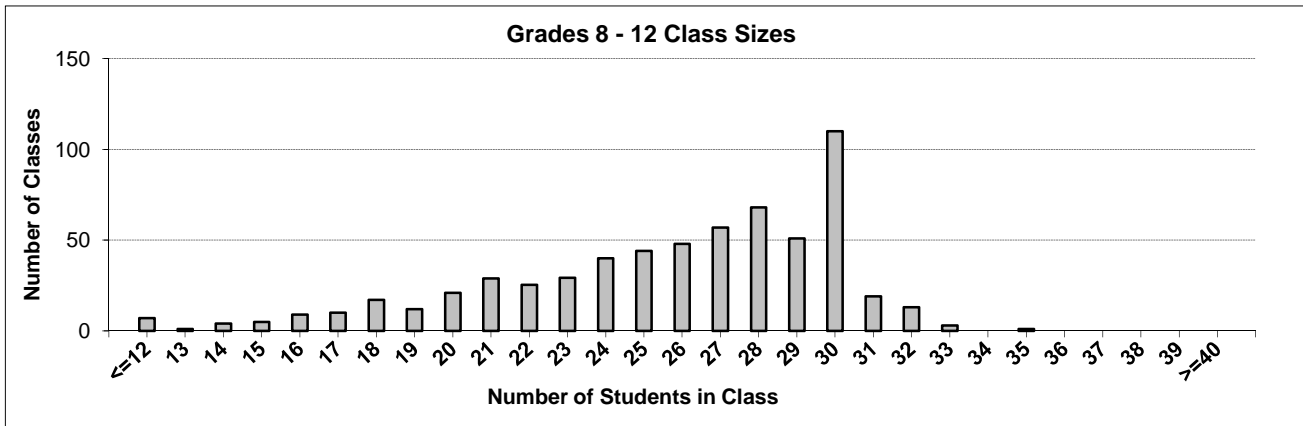
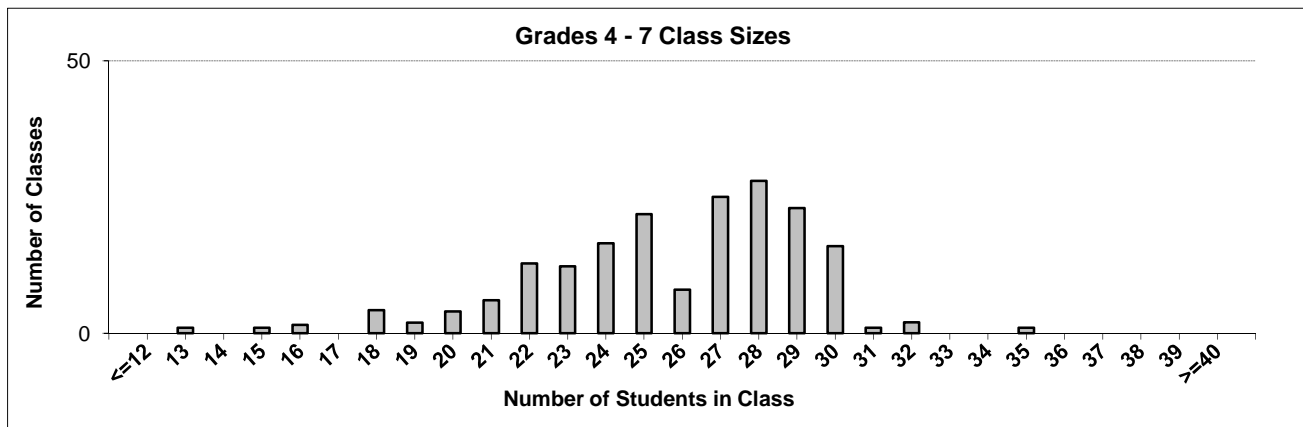
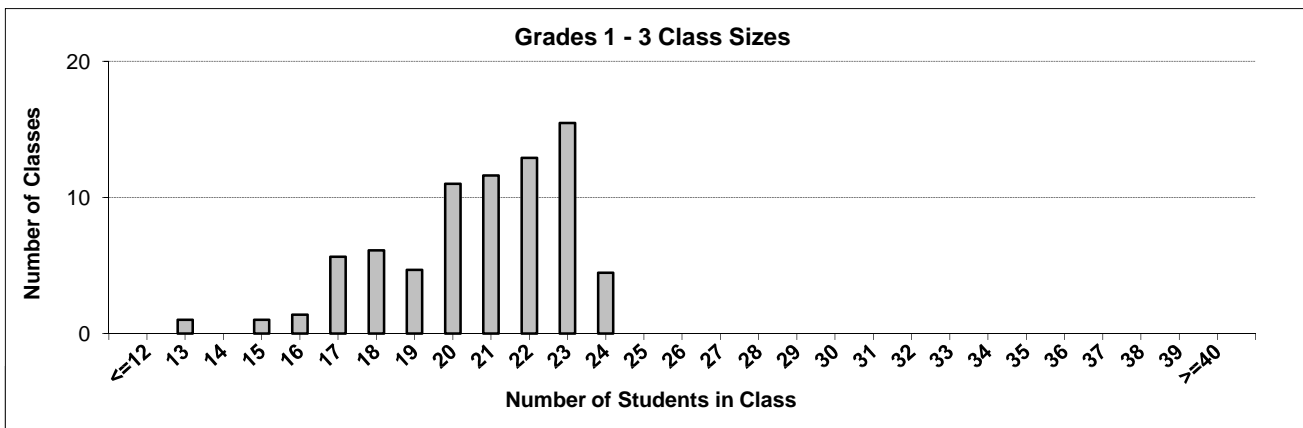
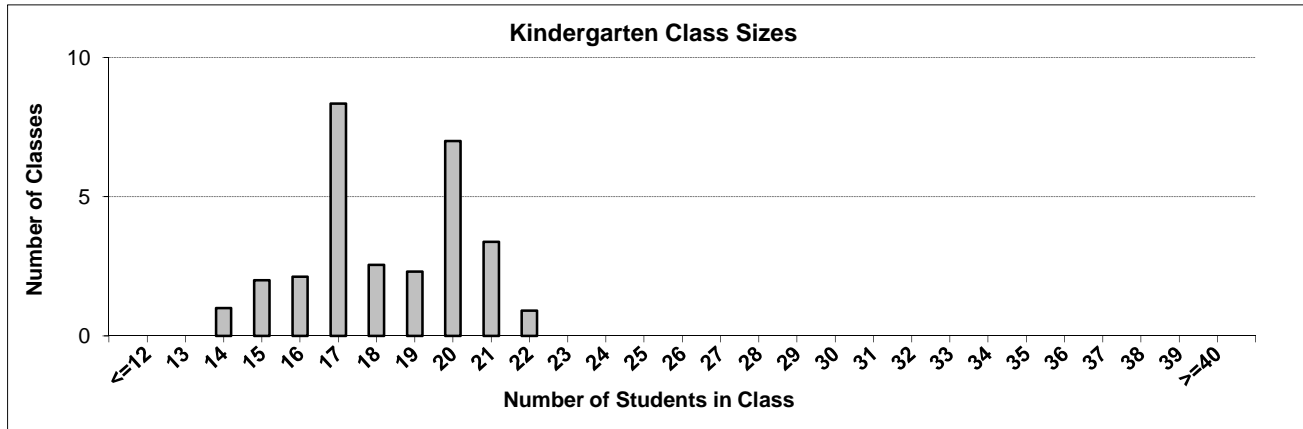
Ministry reports are available at <http://www.bced.gov.bc.ca/reporting/>

Contact the Information Department at educ.reportingunit@gov.bc.ca

District Class Sizes

079 Cowichan Valley

Source: Class size data collection (as of September 30) from standard BC public schools.



District - Average Class Size

079 Cowichan Valley

Source: Class size data collection (as of September 30) from standard BC public schools.

District - Average Class Size	Kindergarten	Grade 1 - 3	Grade 4 - 7	Grade 8 - 12
	18.3	20.7	25.8	25.7

Province - Average Class Size	Kindergarten	Grade 1 - 3	Grade 4 - 7	Grade 8 - 12
	18.5	20.6	25.9	25.0

Number of Reported Classes with Assigned Education Assistants	337
---	-----

Number of Reported Schools in District	25
--	----

Number of Reported Classes in District	916
--	-----

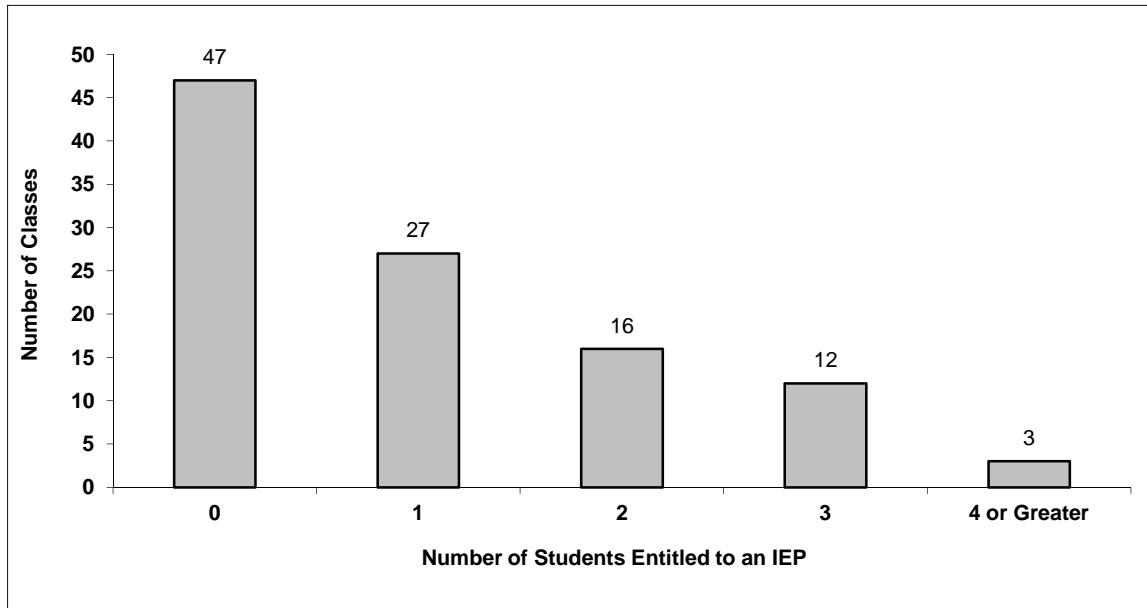
Number of Reported Classes in District with more than 30 Students	40
---	----

District - Students Entitled to an Individual Education Plan (IEP)

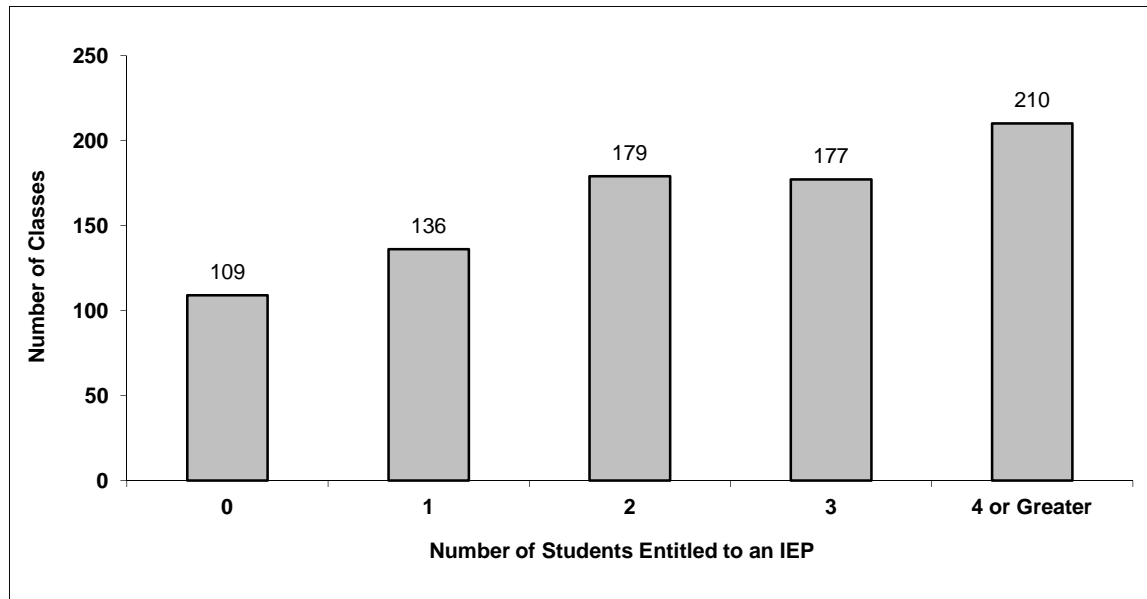
079 Cowichan Valley

Source: Class size data collection (as of September 30) from standard BC public schools.

Grades K-3 - Number of Classes in District with 'X' Number of Students Entitled to an IEP



Grades 4-12 - Number of Classes in District with 'X' Number of Students Entitled to an IEP

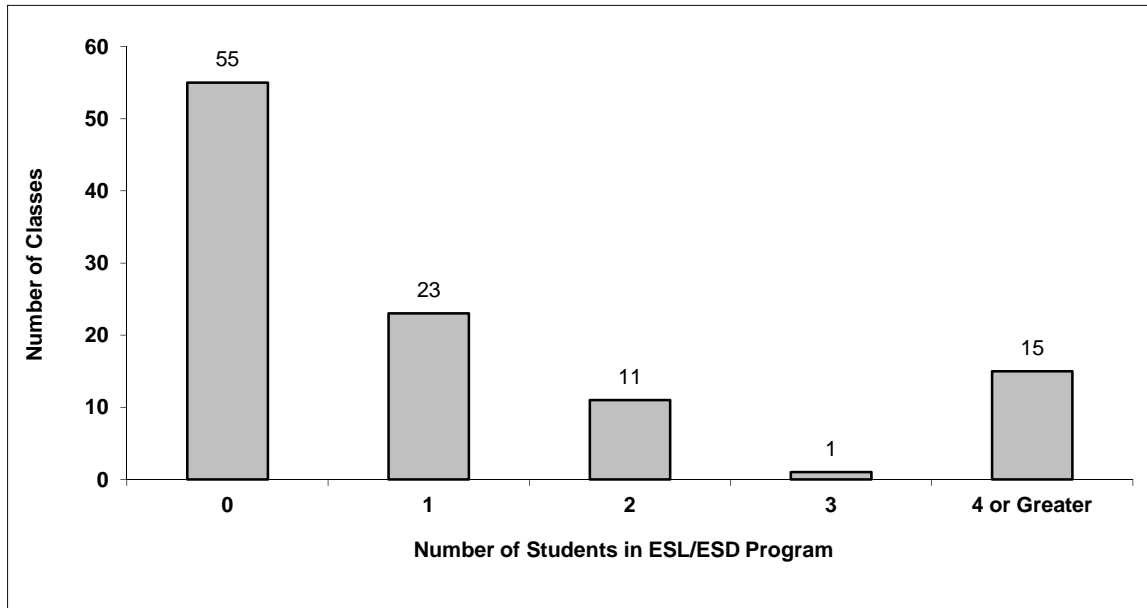


District - Students in English as a Second Language/Dialect (ESL/ESD) Program

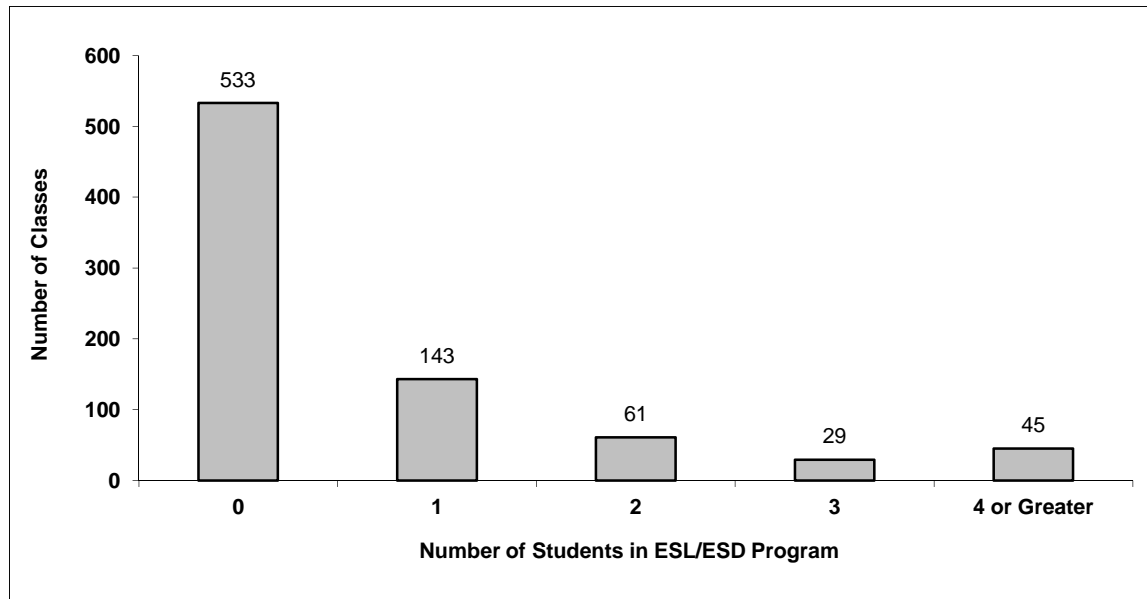
079 Cowichan Valley

Source: Class size data collection (as of September 30) from standard BC public schools.

Grades K-3 - Number of Classes in District with 'X' Number of Students in ESL/ESD Program



Grades 4-12 - Number of Classes in District with 'X' Number of Students in ESL/ESD Program



079 Cowichan Valley - Average Class Size by School

Source: Class size data collection (as of September 30) from standard BC public schools.

Ministry Code	School Name	Kindergarten	Grade 1 - 3	Grade 4 - 7	Grade 8 - 12
07966011	AB Greenwell Elementary	18.0	20.1	20.0	-
07965025	Alex Aitken	20.0	20.8	28.3	-
07965014	Alexander Elementary	21.2	21.3	29.0	-
07965007	Bench Elementary	19.3	22.7	29.9	-
07979041	Chemainus Community School	19.5	22.3	27.9	-
07965033	Chemainus Secondary	-	-	-	22.4
07979042	Cobble Hill Elementary	16.5	21.0	26.9	-
07965009	Cowichan Secondary	-	-	-	26.4
07965006	Crofton Elementary	17.5	20.5	27.5	-
07965037	Discovery Elementary	16.0	20.0	28.5	-
07965024	Drinkwater Elementary	16.7	19.8	27.9	-
07965002	Duncan Elementary	19.7	22.7	28.8	-
07965039	Frances Kelsey Secondary	-	-	-	26.5
07965015	George Bonner Middle School	-	-	26.7	28.9
07965023	Khowhemun Elementary	14.5	17.9	25.3	-
07965017	Koksilah Elementary	20.0	15.0	24.9	-
07966004	Lake Cowichan Secondary	-	-	25.5	20.3
07979040	Maple Bay Elementary	20.8	22.9	27.8	-
07965003	Mill Bay Elementary	20.3	21.8	27.6	-
07965018	Mount Prevost Middle	-	-	23.0	25.7
07966012	Palsson Elementary	17.6	21.4	28.7	-
07965021	Quamichan Middle	-	-	25.7	26.5
07965011	Somenos Rural Traditional	17.0	18.8	25.0	-
07965016	Tansor Elementary	17.0	18.1	27.3	-
07965032	Thetis Island Elementary	16.0	16.0	16.0	-

Glossary

Term	Definition / Notes
English as a Second Language/Dialect (ESL/ESD) Program	<ul style="list-style-type: none"> • A program offered to students whose primary language(s) is/are other than English, and who may require additional services.
Grade	<ul style="list-style-type: none"> • The assigned grade of a student on September 30.
KH	<ul style="list-style-type: none"> • Kindergarten half-time
KF	<ul style="list-style-type: none"> • Kindergarten full-time
Number of Students	<ul style="list-style-type: none"> • Student population is calculated by headcount.
Student	<ul style="list-style-type: none"> • A person enrolled in a BC school. Student populations are calculated by headcount. Students include all adult and school-aged persons who are working toward a certificate of graduation.
Student Entitled to an Individual Education Plan	<ul style="list-style-type: none"> • A student for whom an Individual Education Plan (IEP) must be designed under the Individual Education Plan order, Ministerial Order 638/95.

District - Rationales for Classes with More Than 30 Students

079 - Cowichan Valley

Source: Class size data collection (as of September 30) from standard BC public schools.

Under the *School Act* whenever a class in grades 4 to 12 exceeds 30 students, the principal and the superintendent must confirm that in their opinion, the learning conditions in that classroom are appropriate for the students. In addition, the principal must state the reasons or rationale for that class exceeding 30 students. If parents have questions regarding the information in this report, they should contact the school principal.

Ministry Code	School Name	Division/Class	No. of Students	Rationale
07965009	Cowichan Secondary	PLANNING 10 (09)	32	Additional supports available.
07965009	Cowichan Secondary	BIOLOGY 12 (03)	32	High-functioning class of motivated students. teacher approved the additional student.
07965009	Cowichan Secondary	INTRODUCTORY SPANISH 11 (02), SPANISH 10 (02)	32	Teacher waived consult. High functioning learners. No IEPs.
07965009	Cowichan Secondary	PRE-CALCULUS 11 (01)	32	High-functioning class, no IEPs. Additional supports available.
07965009	Cowichan Secondary	BA AREA AND ETHNIC STUDIES 10A (02), BA AREA AND ETHNIC STUDIES 11A (02), BA ARE	31	First Nations Art with Teacher, Cultural EA, Aboriginal Support Worker and other supports available.
07965009	Cowichan Secondary	PHYSICS 11 (01)	31	High functioning students. No SPED, several Gifted.
07965009	Cowichan Secondary	EARTH SCIENCE 11 (01)	31	Learning Supports available.
07965009	Cowichan Secondary	ENGLISH 12 (02)	31	Teacher approved the additional student.
07965009	Cowichan Secondary	PLANNING 10 (08)	31	Additional supports available.
07965009	Cowichan Secondary	APPRENTICESHIP AND WORKPLACE MATH 11 (02)	31	EA Available in class. Additional supports available.
07965009	Cowichan Secondary	PHYSICAL EDUCATION 10 (08)	31	Learning Centre and Administration available for support.
07965009	Cowichan Secondary	PHYSICAL EDUCATION 10 (09)	31	Learning Centre and Administration available for support.
07965009	Cowichan Secondary	PRE-CALCULUS 11 (01)	31	Excel class. High-functioning. Student needs are met.
07965015	George Bonner Middle School	LD LOCALLY DEVELOPED 8A (04)	31	The grade 8 students are divided into classes and are balanced for composition purposes as well as for size. The two slightly smaller grade 8 classes have students with much more challenging special needs.
07965015	George Bonner Middle School	SS 8, PE 8 (04)	31	The grade 8 students are divided into classes and are balanced for composition purposes as well as for size. The two slightly smaller grade 8 classes have students with much more challenging special needs.

District - Rationales for Classes with More Than 30 Students

079 - Cowichan Valley

Source: Class size data collection (as of September 30) from standard BC public schools.

Under the *School Act* whenever a class in grades 4 to 12 exceeds 30 students, the principal and the superintendent must confirm that in their opinion, the learning conditions in that classroom are appropriate for the students. In addition, the principal must state the reasons or rationale for that class exceeding 30 students. If parents have questions regarding the information in this report, they should contact the school principal.

Ministry Code	School Name	Division/Class	No. of Students	Rationale
07965015	George Bonner Middle School	MUSIC 7 (01)	31	Extensive discussions with band teacher as the timetable was being created. Band teacher wanted to accommodate all students taking band even if the class size exceeded 30. Larger classes for band are appropriate for student learning. Consent given.
07965015	George Bonner Middle School	FRENCH 8 (04)	31	The grade 8 students are divided into classes and are balanced for composition purposes as well as for size. The two slightly smaller grade 8 classes have students with much more challenging special needs.
07965015	George Bonner Middle School	SC 8, HCE 8 (04)	31	The grade 8 students are divided into classes and are balanced for composition purposes as well as for size. The two slightly smaller grade 8 classes have students with much more challenging special needs.
07965015	George Bonner Middle School	MUSIC 6 (06)	32	Extensive discussions with band teacher as the timetable was being created. Band teacher wanted to accommodate all students taking band even if the class size exceeded 30. Larger classes for band are appropriate for student learning. Consent given.
07965015	George Bonner Middle School	MUSIC 7 (03)	32	Extensive discussions with band teacher as the timetable was being created. Band teacher wanted to accommodate all students taking band even if the class size exceeded 30. Larger classes for band are appropriate for student learning. Consent given.

District - Rationales for Classes with More Than 30 Students

079 - Cowichan Valley

Source: Class size data collection (as of September 30) from standard BC public schools.

Under the *School Act* whenever a class in grades 4 to 12 exceeds 30 students, the principal and the superintendent must confirm that in their opinion, the learning conditions in that classroom are appropriate for the students. In addition, the principal must state the reasons or rationale for that class exceeding 30 students. If parents have questions regarding the information in this report, they should contact the school principal.

Ministry Code	School Name	Division/Class	No. of Students	Rationale
07965015	George Bonner Middle School	MUSIC 6 (03)	35	Extensive discussions with band teacher as the timetable was being created. Band teacher wanted to accommodate all students taking band even if the class size exceeded 30. Larger classes for band are appropriate for student learning. Consent given.
07965018	Mount Prevost Middle	ENGLISH LANGUAGE ARTS 9 (03)	31	Students are able to work in a manner that provides them with the opportunity to be successful.
07965018	Mount Prevost Middle	ENGLISH LANGUAGE ARTS 9 (04)	31	As a result of the instructional support in place this class functions well.
07965018	Mount Prevost Middle	PHYSICAL EDUCATION 8 (05)	33	As a result of limiting course selection this class is over but due to the instructional support mechanisms in place the class functions well.
07965018	Mount Prevost Middle	LD LEADERSHIP 9 (01)	35	Teacher requested additional students be added. Larger classes for leadership courses are appropriate for student learning.
07965018	Mount Prevost Middle	DRAMA 9 (01)	33	Requested for play production
07965018	Mount Prevost Middle	DRAMA 9 (02)	32	Requested for play production
07965018	Mount Prevost Middle	MUSIC 8 (01)	31	Teacher requested additional students be added. Larger classes for band courses are appropriate for student learning.
07965021	Quamichan Middle	HEALTH AND CAREER EDUCATION 09 (02)	31	The time is split between HACE, Advisory and Tutorial so there is collaboration with other non enrolling teachers to bring down the overall class size. There is also office support available.
07965021	Quamichan Middle	ENGLISH LANGUAGE ARTS 9 (02)	31	LA support and AB ED support available for students who are struggling with concepts.
07965021	Quamichan Middle	MATHEMATICS 9 (02)	32	The class is motivated and functioning well. IBIT, Ab Ed and LA support are all available.
07965021	Quamichan Middle	LD LEADERSHIP 9 (01)	33	It is a project based class that is meeting the needs of the students.

District - Rationales for Classes with More Than 30 Students

079 - Cowichan Valley

Source: Class size data collection (as of September 30) from standard BC public schools.

Under the *School Act* whenever a class in grades 4 to 12 exceeds 30 students, the principal and the superintendent must confirm that in their opinion, the learning conditions in that classroom are appropriate for the students. In addition, the principal must state the reasons or rationale for that class exceeding 30 students. If parents have questions regarding the information in this report, they should contact the school principal.

Ministry Code	School Name	Division/Class	No. of Students	Rationale
07965021	Quamichan Middle	PHYSICAL EDUCATION 9 (02)	32	There is EA support in the class and the PE activities work well with the group. LA and IBIT support is also available.
07965021	Quamichan Middle	PHYSICAL EDUCATION 9 (04)	32	The PE activities work well with the dynamics of the class. Office support is also available.
07965021	Quamichan Middle	ENGLISH LANGUAGE ARTS 9 (04)	32	LA and Ab Ed support is available to take some students out of the class for support thereby lowering the class number.
07965033	Chemainus Secondary	ENGLISH 10 (02)	32	Due to the limited number of courses available (small secondary school) and the instructional model used by the teacher, students are able to work in a manner that provides them with the opportunity to be successful.
07965033	Chemainus Secondary	SCIENCE 8 (02)	32	Due to the limited number of course sections available (small secondary school) and the instructional model used by the teacher, students are able to work in a manner that provides them with the opportunity to be successful.
07965033	Chemainus Secondary	ENGLISH 11 (02)	31	Due to the limited number of course sections available (small secondary school) and the instructional model used by the teacher, students are able to work in a manner that provides them with the opportunity to be successful.
07966004	Lake Cowichan Secondary	Leadership 10,11,12	32	Course meets outside the timetable. Students are motivated and well-behaved. Larger classes for leadership courses are appropriate for student learning
07966004	Lake Cowichan Secondary	FOUNDATIONS OF MATH AND PRE-CALCULUS 10	32	Teacher is very experienced and capable. This is the higher stream of math and students are highly motivated.