

Overview of Class Size and Composition in British Columbia Public Schools 2011/12

School District 075 Mission

These class size data are current as of September 30, 2011 and have been verified by school districts.

PLEASE NOTE

The Ministry makes small and continuous improvements to the quality of its data. Sometimes these changes result in differences from previously published reports. The data in this report are the most accurate data available at time of publication.

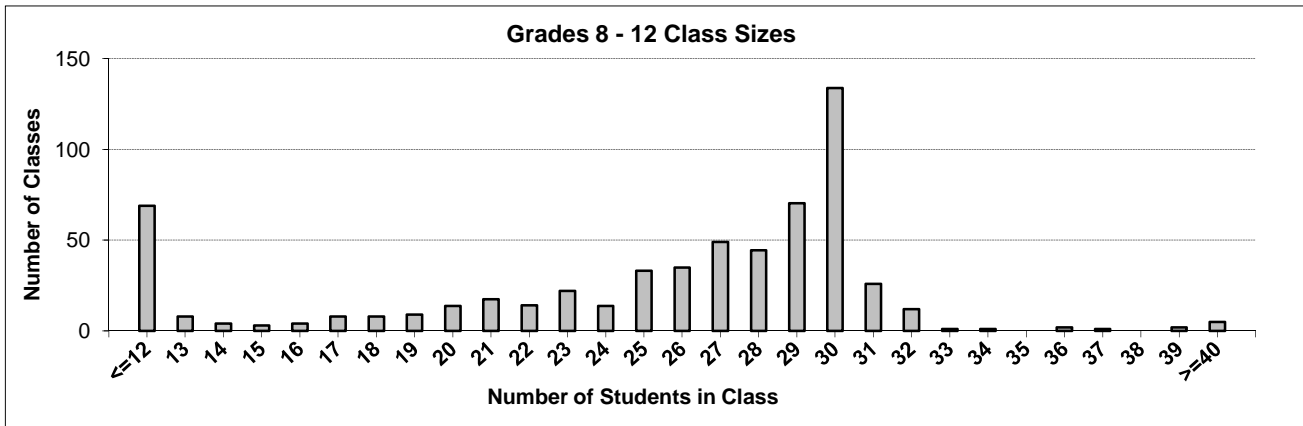
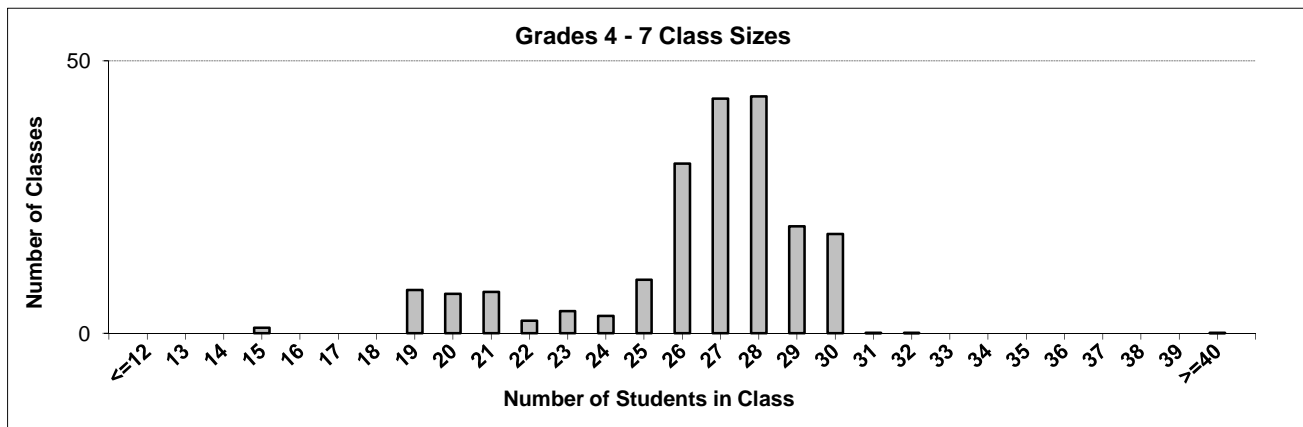
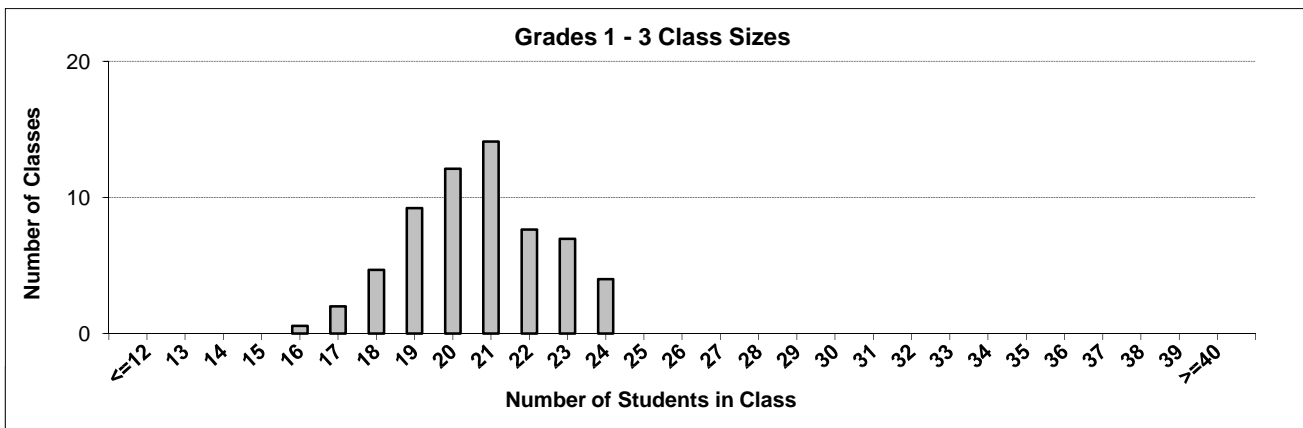
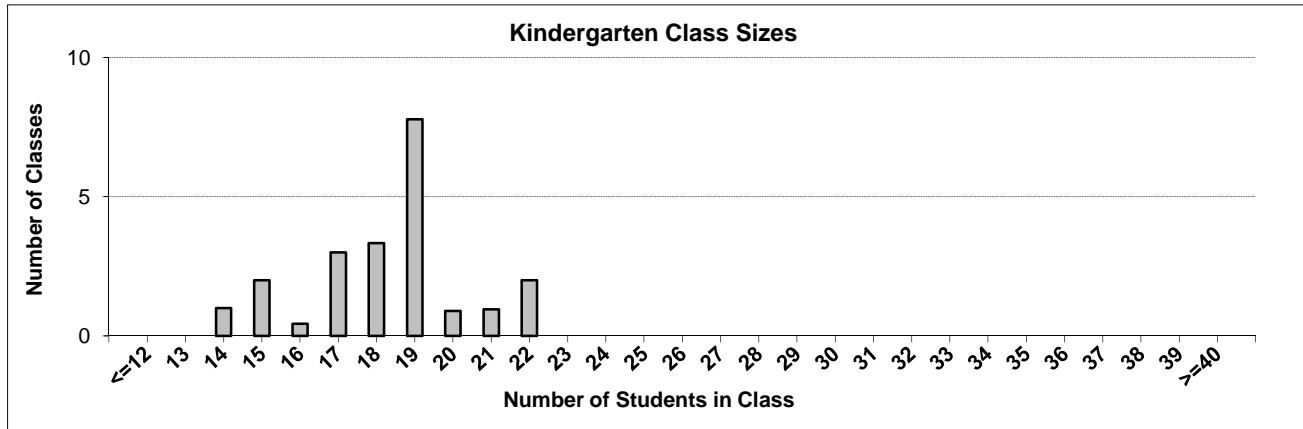
Ministry reports are available at <http://www.bced.gov.bc.ca/reporting/>

Contact the Information Department at educ.reportingunit@gov.bc.ca

District Class Sizes

075 Mission

Source: Class size data collection (as of September 30) from standard BC public schools.



District - Average Class Size

075 Mission

Source: Class size data collection (as of September 30) from standard BC public schools.

District - Average Class Size	Kindergarten	Grade 1 - 3	Grade 4 - 7	Grade 8 - 12
	18.3	20.6	26.4	24.8

Province - Average Class Size	Kindergarten	Grade 1 - 3	Grade 4 - 7	Grade 8 - 12
	18.5	20.6	25.9	25.0

Number of Reported Classes with Assigned Education Assistants	198
---	-----

Number of Reported Schools in District	15
--	----

Number of Reported Classes in District	891
--	-----

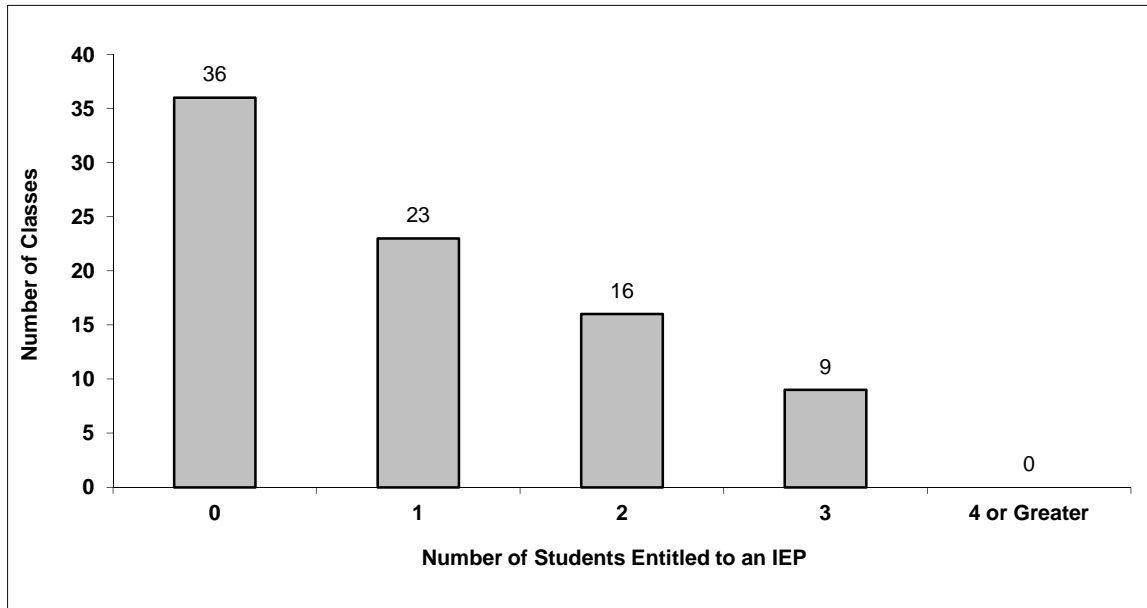
Number of Reported Classes in District with more than 30 Students	50
---	----

District - Students Entitled to an Individual Education Plan (IEP)

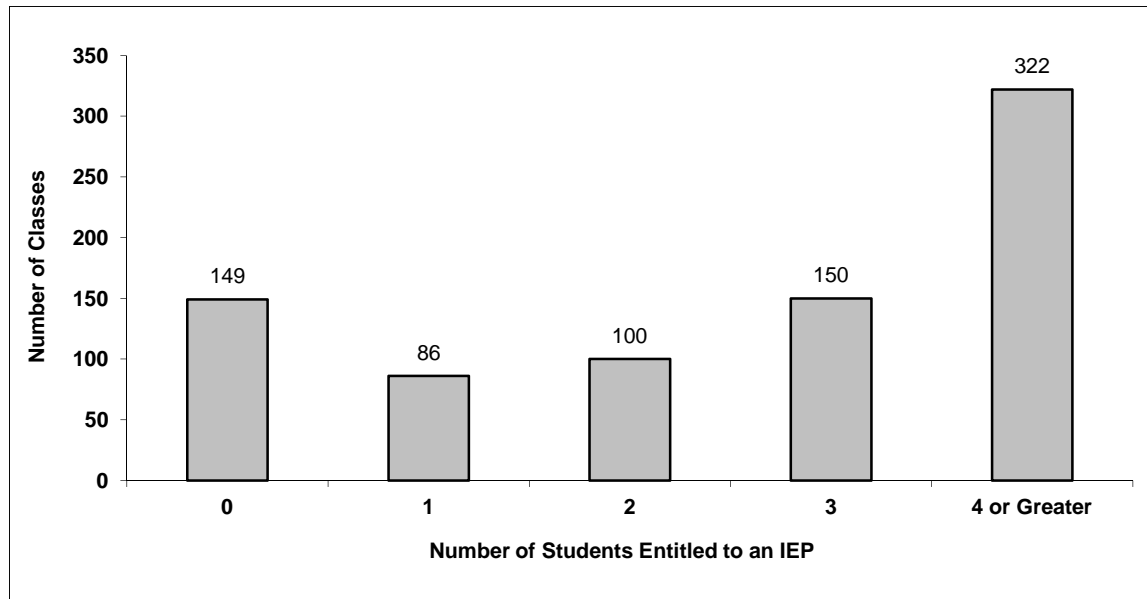
075 Mission

Source: Class size data collection (as of September 30) from standard BC public schools.

Grades K-3 - Number of Classes in District with 'X' Number of Students Entitled to an IEP



Grades 4-12 - Number of Classes in District with 'X' Number of Students Entitled to an IEP

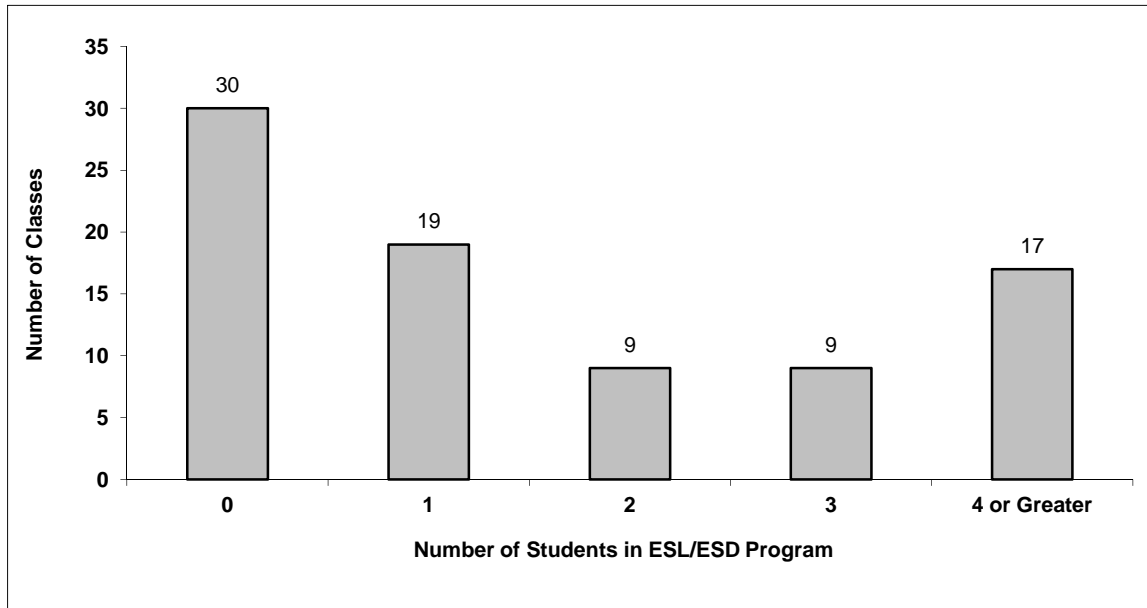


District - Students in English as a Second Language/Dialect (ESL/ESD) Program

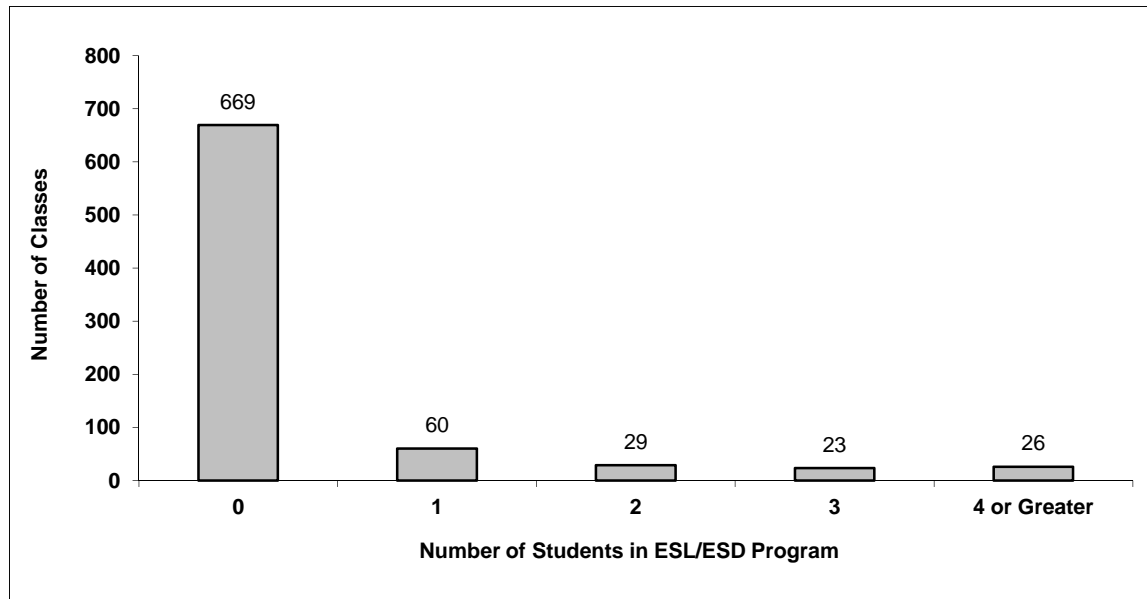
075 Mission

Source: Class size data collection (as of September 30) from standard BC public schools.

Grades K-3 - Number of Classes in District with 'X' Number of Students in ESL/ESD Program



Grades 4-12 - Number of Classes in District with 'X' Number of Students in ESL/ESD Program



075 Mission - Average Class Size by School

Source: Class size data collection (as of September 30) from standard BC public schools.

Ministry Code	School Name	Kindergarten	Grade 1 - 3	Grade 4 - 7	Grade 8 - 12
07575028	Albert McMahon Elementary	17.4	20.3	26.5	-
07575023	Cherry Hill Elementary	18.7	20.9	27.0	-
07575029	Christine Morrison Elementary	21.0	20.8	26.3	-
07575032	Deroche Elementary	18.0	18.0	23.0	-
07575006	Dewdney Elementary	17.0	19.9	25.4	-
07575015	Edwin S Richards Elementary	18.0	20.3	27.0	-
07575001	Hatzic Elementary	18.7	21.8	28.0	-
07575035	Hatzic Secondary	-	-	26.6	24.9
07575036	Heritage Park Secondary	-	-	26.2	24.5
07575027	Hillside Elementary	19.0	20.6	26.9	-
07575007	Mission Central Elementary	19.4	20.9	21.3	-
07575034	Mission Middle Secondary	-	-	26.5	25.0
07575019	Silverdale Elementary	21.0	19.9	26.3	-
07575018	West Heights Elementary	15.3	19.8	24.8	-
07575020	Windebank Elementary	14.5	22.1	27.8	-

Glossary

Term	Definition / Notes
English as a Second Language/Dialect (ESL/ESD) Program	<ul style="list-style-type: none"> • A program offered to students whose primary language(s) is/are other than English, and who may require additional services.
Grade	<ul style="list-style-type: none"> • The assigned grade of a student on September 30.
KH	<ul style="list-style-type: none"> • Kindergarten half-time
KF	<ul style="list-style-type: none"> • Kindergarten full-time
Number of Students	<ul style="list-style-type: none"> • Student population is calculated by headcount.
Student	<ul style="list-style-type: none"> • A person enrolled in a BC school. Student populations are calculated by headcount. Students include all adult and school-aged persons who are working toward a certificate of graduation.
Student Entitled to an Individual Education Plan	<ul style="list-style-type: none"> • A student for whom an Individual Education Plan (IEP) must be designed under the Individual Education Plan order, Ministerial Order 638/95.

District - Rationales for Classes with More Than 30 Students

075 - Mission

Source: Class size data collection (as of September 30) from standard BC public schools.

Under the *School Act* whenever a class in grades 4 to 12 exceeds 30 students, the principal and the superintendent must confirm that in their opinion, the learning conditions in that classroom are appropriate for the students. In addition, the principal must state the reasons or rationale for that class exceeding 30 students. If parents have questions regarding the information in this report, they should contact the school principal.

Ministry Code	School Name	Division/Class	No. of Students	Rationale
07575034	Mission Middle Secondary	BA CTZNSHP/CIVIC ACTVTS & PUB AFFRS 10A (01), BA CTZNSHP/CIVIC ACTVTS & PUB AFFR	39	MSS only offers one leadership class throughout the year which is outside the timetable, experienced instructor.
07575034	Mission Middle Secondary	GEOGRAPHY 12 (01)	36	Virtual course, enrollment was higher than expected, experienced teacher able to provide many teaching strategies.
07575034	Mission Middle Secondary	APPRENTICESHIP AND WORKPLACE MATH 11 (01)	31	Only 2 blocks of Workplace Math 11, enrollment was higher than expected, experienced teacher.
07575035	Hatzic Secondary	SOCIAL STUDIES 9 (03)	31	Grade 9/10 electives are all at capacity and timetable restrictions make it difficult to balance.
07575035	Hatzic Secondary	DRAMA 10: GENERAL (01), DRAMA 9 (01)	31	Experienced drama teacher with two blocks of Drama 9/10, one at 30, one at 31. Grade 9/10 electives are near or at capacity and restrictions on timetable make it difficult to balance.
07575035	Hatzic Secondary	ENGLISH 12 (03)	32	A number of our students are graduating in January and this is the only semester one English 12 class.
07575035	Hatzic Secondary	SOCIAL STUDIES 10 (03)	32	All sections near or at capacity 29-32 students. There is no room to move students.
07575035	Hatzic Secondary	SOCIAL STUDIES 11 (01)	31	Restriction in timetable make it impossible to move students without causing violations in other academic classes.
07575035	Hatzic Secondary	There are two sections of Girls PE. Both have 31/32 students. Teacher is an expe	32	There are two sections of Girls PE and both are at 31/32 students. Teacher is experienced educator and coach and course meets the needs of specific students.
07575035	Hatzic Secondary	PRINCIPLES OF MATHEMATICS 12 (01)	32	There is only one section of PE 12 this year.
07575035	Hatzic Secondary	SPANISH 9 (02)	31	All Grade 9/10 electives are near or at capacity. Timetable restrictions make it impossible to move students without causing violations in academic classes.

District - Rationales for Classes with More Than 30 Students

075 - Mission

Source: Class size data collection (as of September 30) from standard BC public schools.

Under the *School Act* whenever a class in grades 4 to 12 exceeds 30 students, the principal and the superintendent must confirm that in their opinion, the learning conditions in that classroom are appropriate for the students. In addition, the principal must state the reasons or rationale for that class exceeding 30 students. If parents have questions regarding the information in this report, they should contact the school principal.

Ministry Code	School Name	Division/Class	No. of Students	Rationale
07575035	Hatzic Secondary	FRENCH 8 (01)	31	All sections of French are currently at 30 - 32 students. They are balanced and there is no room to move students to another section.
07575035	Hatzic Secondary	FRENCH 8 (04)	31	All sections of French are currently at 30 - 32 students. They are balanced and there is no room to move students to another section.
07575035	Hatzic Secondary	MATHEMATICS 9 (01)	31	All sections of Math 9 are at 30 or 31. There is no room to move students.
07575035	Hatzic Secondary	MATHEMATICS 9 (02)	31	All sections of Math 9 are currently at 30 - 31 students. They are balanced and there is no room to move students to another section.
07575035	Hatzic Secondary	SCIENCE 10 (01)	32	Only one section of Science 10 Challenge
07575035	Hatzic Secondary	VISUAL ARTS 10: GENERAL (01), VISUAL ARTS 9 (01)	32	Experience art teacher with two blocks of art 9/10. Both classes have 31 students. Grade 9/10 electives are near or at capacity making it difficult to balance.
07575035	Hatzic Secondary	CHORAL MUSIC 11: CONCERT CHOIR (01), CHORAL MUSIC 12: CONCERT CHOIR (01), MUSIC	36	Larger class to maintain and support choir program. Experienced music teacher.
07575035	Hatzic Secondary	PHYSICAL EDUCATION 10 (07), PHYSICAL EDUCATION 9 (07)	31	All pe 9/10 classes are at capacity and movement often results in violations in academic classes. Teacher has many years of teaching PE.
07575035	Hatzic Secondary	SOCIAL STUDIES 10 (01)	32	All sections near or at capacity 29 - 32 students. There is no room to move the students.
07575035	Hatzic Secondary	FOUNDATIONS OF MATH AND PRE-CALCULUS 10 (04)	31	The Math 10 pre-calc classes in all sections are at, or near capacity and well balanced. No designated students in this class. The other class in this block is at 30. Experienced teacher with many years of teaching.
07575035	Hatzic Secondary	ENGLISH 10 (04)	31	Timetable restraints make it difficult to balance.

District - Rationales for Classes with More Than 30 Students

075 - Mission

Source: Class size data collection (as of September 30) from standard BC public schools.

Under the *School Act* whenever a class in grades 4 to 12 exceeds 30 students, the principal and the superintendent must confirm that in their opinion, the learning conditions in that classroom are appropriate for the students. In addition, the principal must state the reasons or rationale for that class exceeding 30 students. If parents have questions regarding the information in this report, they should contact the school principal.

Ministry Code	School Name	Division/Class	No. of Students	Rationale
07575035	Hatzic Secondary	PPHYSICAL EDUCATION 10 (01), PHYSICAL EDUCATION 9 (01)	34	PE 9/10 classes are full and balanced at approx 30 students each. There is no room to move students. Experienced teacher with over 20 years of teaching PE.
07575035	Hatzic Secondary	PHYSICAL EDUCATION 10 (03), PHYSICAL EDUCATION 9 (03)	31	All PE 9/10 classes are at 29 - 31. Restrictions on timetable make it difficult to balance.
07575035	Hatzic Secondary	VISUAL ARTS 10: GENERAL (02), VISUAL ARTS 9 (02)	31	Experience art teacher with two blocks of art 9/10. Both classes have 31 students. Grade 9/10 electives are near or at capacity making it difficult to balance.
07575035	Hatzic Secondary	FRENCH 8 (02)	32	All sections of French are currently at 30 - 32 students. They are balanced and there is no room to move students to another section.
07575035	Hatzic Secondary	PHYSICAL EDUCATION 10 (01), PHYSICAL EDUCATION 11 (01), PHYSICAL EDUCATION 8 (01)	31	There are two sections of Girls PE. Both have 31/32 students. Teacher is an experienced educator and coach and course meets the needs of specific students.
07575036	Heritage Park Secondary	There are 2 EA's in this class to support small groups where necessary.FOODS AND	31	There are 2 EA's in this class to support small groups where necessary.
07575036	Heritage Park Secondary	PLANNING 10 (04)	31	We are able to offer technology support in small group sizes in the learning centre with direct supervision. This can be flexible grouping depending upon teachers' request.
07575036	Heritage Park Secondary	GRADUATION TRANSITIONS (01)	136	This class takes place outside of the regular timetable.
07575036	Heritage Park Secondary	LD LOCALLY DEVELOPED 7A (01), LD LOCALLY DEVELOPED 8A (01), LD LOCALLY DEVELOPED	52	This class is run outside of regular school hours and the teacher decided to run two groups. One before school, and one after school to ensure the students can attend when it fits their schedules.
07575036	Heritage Park Secondary	BIOLOGY 11 (01)	32	The number of students who requested Biology 11 were enough for 2 blocks but not 3. The teacher was offered an EA but declined.

District - Rationales for Classes with More Than 30 Students

075 - Mission

Source: Class size data collection (as of September 30) from standard BC public schools.

Under the *School Act* whenever a class in grades 4 to 12 exceeds 30 students, the principal and the superintendent must confirm that in their opinion, the learning conditions in that classroom are appropriate for the students. In addition, the principal must state the reasons or rationale for that class exceeding 30 students. If parents have questions regarding the information in this report, they should contact the school principal.

Ministry Code	School Name	Division/Class	No. of Students	Rationale
07575036	Heritage Park Secondary	HEALTH AND CAREER EDUCATION 09 (01)	131	This class takes place outside of the regular timetable.
07575036	Heritage Park Secondary	PHYSICAL EDUCATION 8 (02), PHYSICAL EDUCATION 9 (10)	31	Error in timetabling. Student has been placed in correct section.
07575036	Heritage Park Secondary	BIOLOGY 11 (03)	31	The number of students who signed up for Biology 11 was insufficient for three blocks. An EA was offered, however it was declined by the teacher at this point.
07575036	Heritage Park Secondary	PRINCIPLES OF MATHEMATICS 12 (01)	31	We have one block of Math 12. The designated student is a gifted student.
07575036	Heritage Park Secondary	SOCIAL STUDIES 11 (03)	32	The grade 11 socials classes are high in all sections. This class does not have designated students and the option of support from the learning support teacher with small groups as an option.
07575036	Heritage Park Secondary	BA INTERPERSONAL SKILLS 11B (07), BA INTERPERSONAL SKILLS 12B (07), PLANNING 10	31	Class takes place outside of the regular timetable.
07575036	Heritage Park Secondary	BA RENEWABLE NATURAL RESOURCES 12A (01)	39	This class is outside the timetable and is divided into groups for specific activities.
07575036	Heritage Park Secondary	BUSINESS EDUCATION 10: ENTREPRENEURSHIP (03), LD LOCALLY DEVELOPED 8H (03)	31	An EA was offered for support and declined by the teacher.
07575036	Heritage Park Secondary	SOCIAL STUDIES 11 (02)	32	The socials 11 classes which are high in numbers have been balanced as much as possible for small group work.
07575036	Heritage Park Secondary	BA COMMUNICATIONS, CMNCTN TECHNLS 10A (01), LD LOCALLY DEVELOPED 9D (01)	31	There are 2 EA's assigned to this class.
07575036	Heritage Park Secondary	CHEMISTRY 11 (02)	31	There is support available through the learning support class for small group support. We have two blocks of Chem 11 both at this size, however not enough students for three.

District - Rationales for Classes with More Than 30 Students

075 - Mission

Source: Class size data collection (as of September 30) from standard BC public schools.

Under the *School Act* whenever a class in grades 4 to 12 exceeds 30 students, the principal and the superintendent must confirm that in their opinion, the learning conditions in that classroom are appropriate for the students. In addition, the principal must state the reasons or rationale for that class exceeding 30 students. If parents have questions regarding the information in this report, they should contact the school principal.

Ministry Code	School Name	Division/Class	No. of Students	Rationale
07575036	Heritage Park Secondary	CHORAL MUSIC 11: CONCERT CHOIR (01), CHORAL MUSIC 12: CONCERT CHOIR (01), MUSIC	37	This class has 3 EA's attached to specific students which allows the students to participate in class, but also to take a sensory break when necessary.
07575036	Heritage Park Secondary	INSTRUMENTAL MUSIC 11: GUITAR (01), INSTRUMENTAL MUSIC 12: GUITAR (01), MUSIC 10	33	Teacher has an enrolled student who is very musical who works with a variety of students. We are looking for a peer tutor with a specific skill set.
07575036	Heritage Park Secondary	SPANISH 10 (01)	31	Teacher has senior students who volunteer in her class. Both are strong students in this subject. Peer tutors credit were offered to the students, but the teacher said they would rather volunteer.
07575036	Heritage Park Secondary	PHYSICAL EDUCATION 11 (02), PHYSICAL EDUCATION 12 (02)	31	This is a senior 11/12 elective. The G designated students will receive EA support if the teacher requires this. She is getting to know the students at this point. The other designated students are independent.
07575036	Heritage Park Secondary	LAW 12 (01)	32	Due to student sign up, we were able to offer one block of law 12. Assistance through learning support or an EA was offered but declined. Physical space is a concern for the teacher and this is being reviewed.
07575036	Heritage Park Secondary	LD LOCALLY DEVELOPED 10B (01), LD LOCALLY DEVELOPED 11B (01), LD LOCALLY DEVELOP	44	This class is run outside of the timetable and the students work in different events in small groups such as intramurals, tournaments and practices/coaching opportunities.
07575036	Heritage Park Secondary	BA CTZNSHP/CIVIC ACTVTS & PUB AFFRS 10A (01), BA CTZNSHP/CIVIC ACTVTS & PUB AFFR	105	This is a class that organizes and runs many different events such as spirit weeks, highlander games and global awareness events. The students are divided into groups to run these events and are met with in groups.