

Overview of Class Size and Composition in British Columbia Public Schools 2011/12

School District 074 Gold Trail

These class size data are current as of September 30, 2011 and have been verified by school districts.

PLEASE NOTE

The Ministry makes small and continuous improvements to the quality of its data. Sometimes these changes result in differences from previously published reports. The data in this report are the most accurate data available at time of publication.

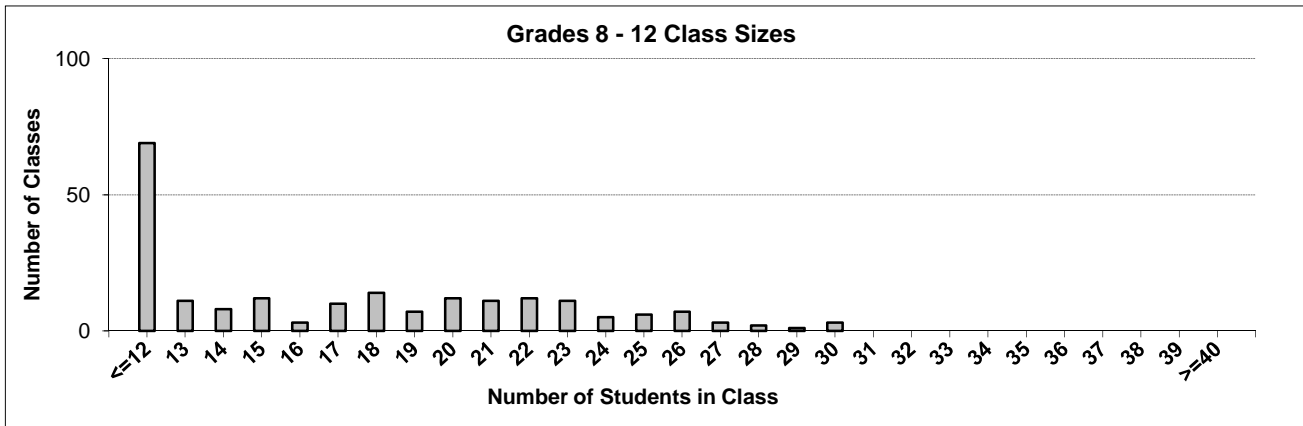
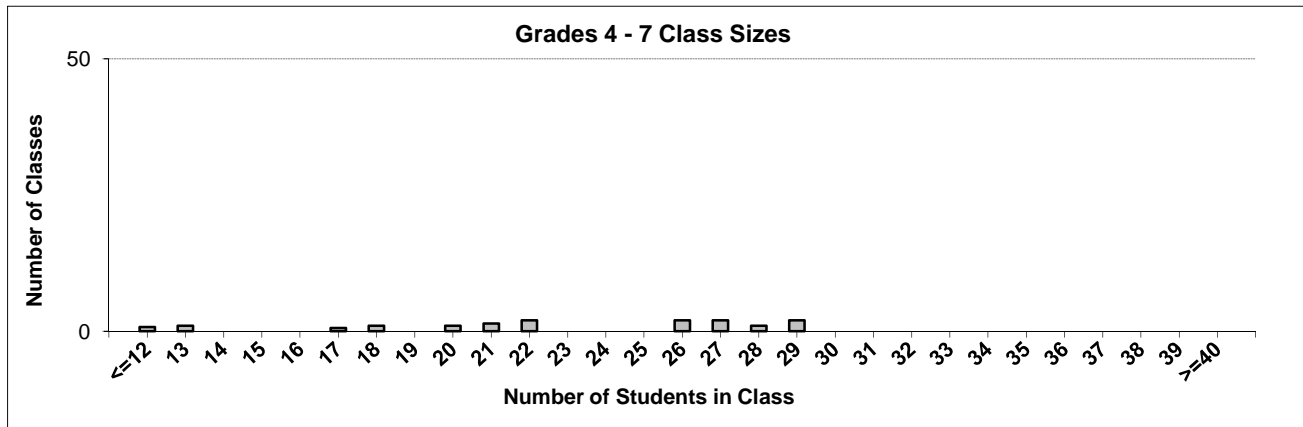
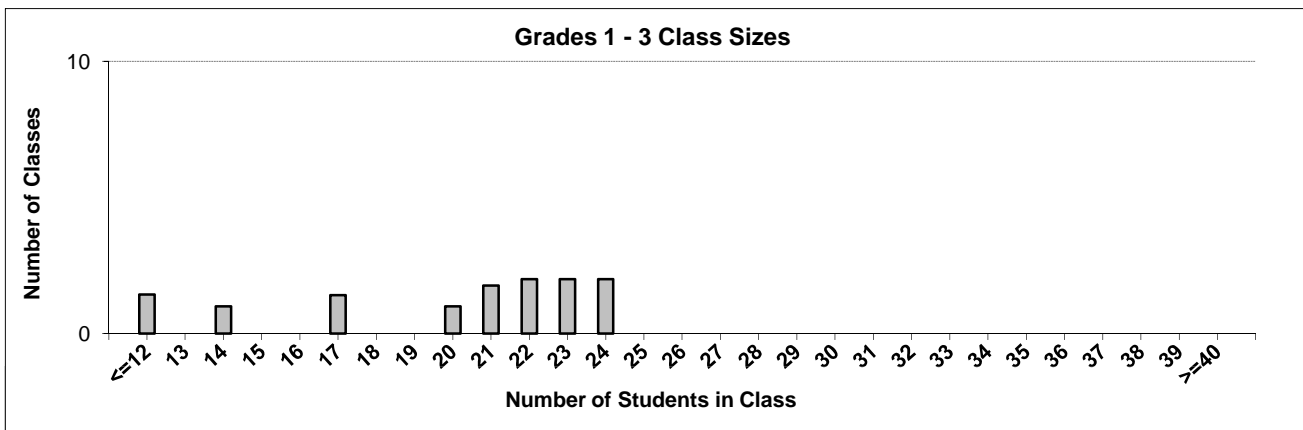
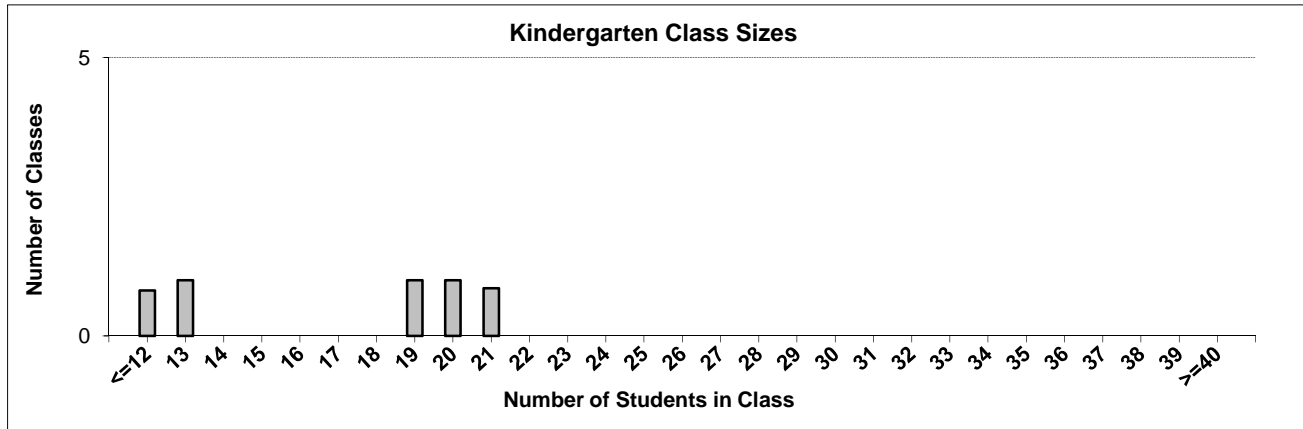
Ministry reports are available at <http://www.bced.gov.bc.ca/reporting/>

Contact the Information Department at educ.reportingunit@gov.bc.ca

District Class Sizes

074 Gold Trail

Source: Class size data collection (as of September 30) from standard BC public schools.



District - Average Class Size

074 Gold Trail

Source: Class size data collection (as of September 30) from standard BC public schools.

District - Average Class Size	Kindergarten	Grade 1 - 3	Grade 4 - 7	Grade 8 - 12
	16.9	19.6	22.4	15.4

Province - Average Class Size	Kindergarten	Grade 1 - 3	Grade 4 - 7	Grade 8 - 12
	18.5	20.6	25.9	25.0

Number of Reported Classes with Assigned Education Assistants	105
---	-----

Number of Reported Schools in District	11
--	----

Number of Reported Classes in District	239
--	-----

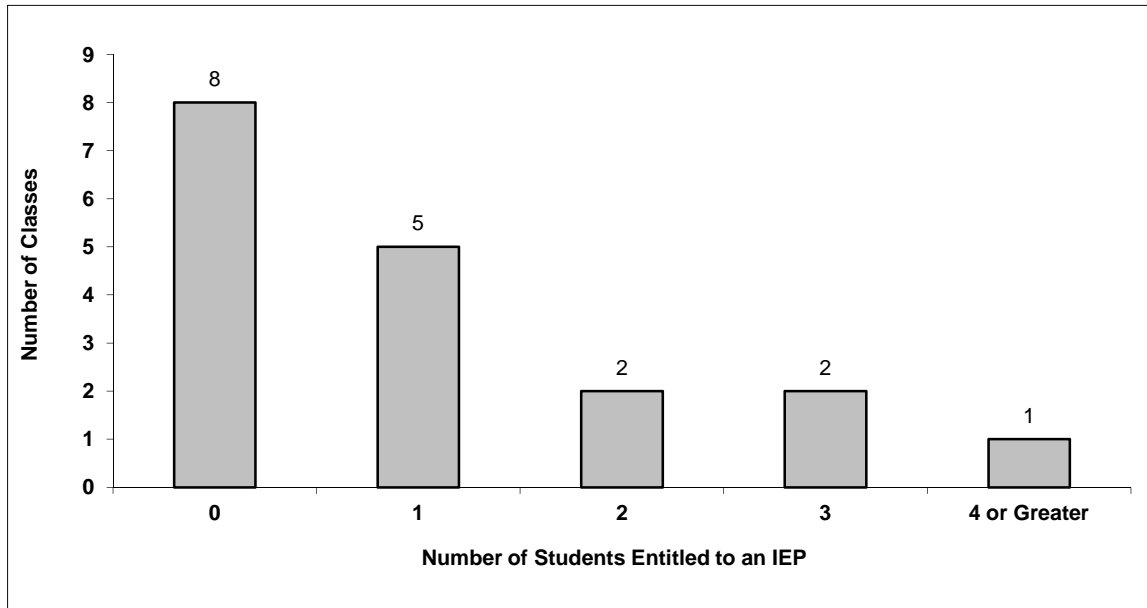
Number of Reported Classes in District with more than 30 Students	0
---	---

District - Students Entitled to an Individual Education Plan (IEP)

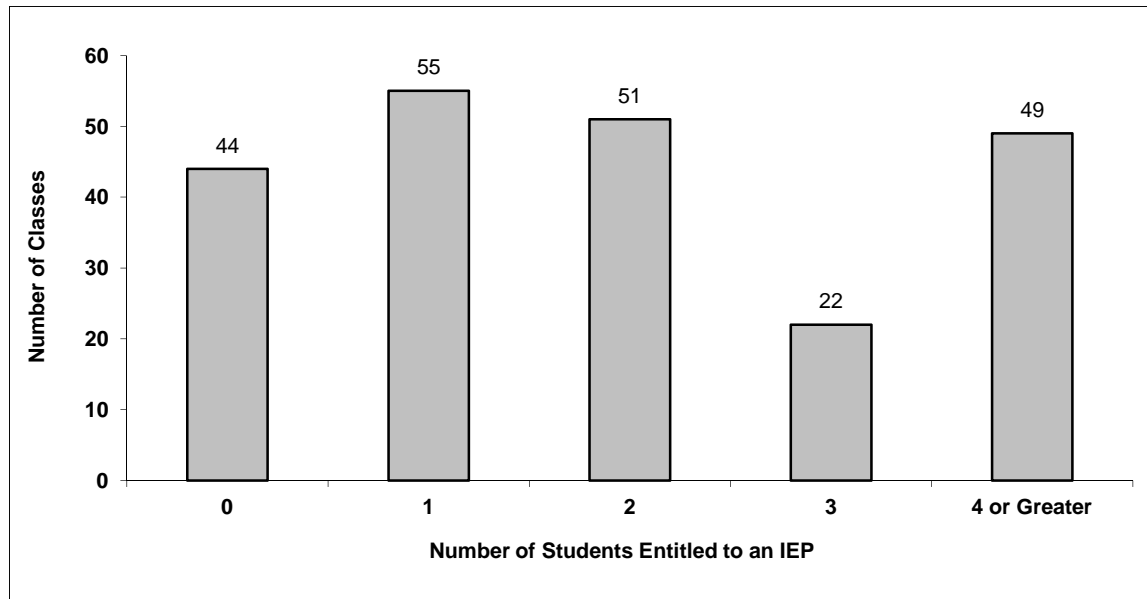
074 Gold Trail

Source: Class size data collection (as of September 30) from standard BC public schools.

Grades K-3 - Number of Classes in District with 'X' Number of Students Entitled to an IEP



Grades 4-12 - Number of Classes in District with 'X' Number of Students Entitled to an IEP

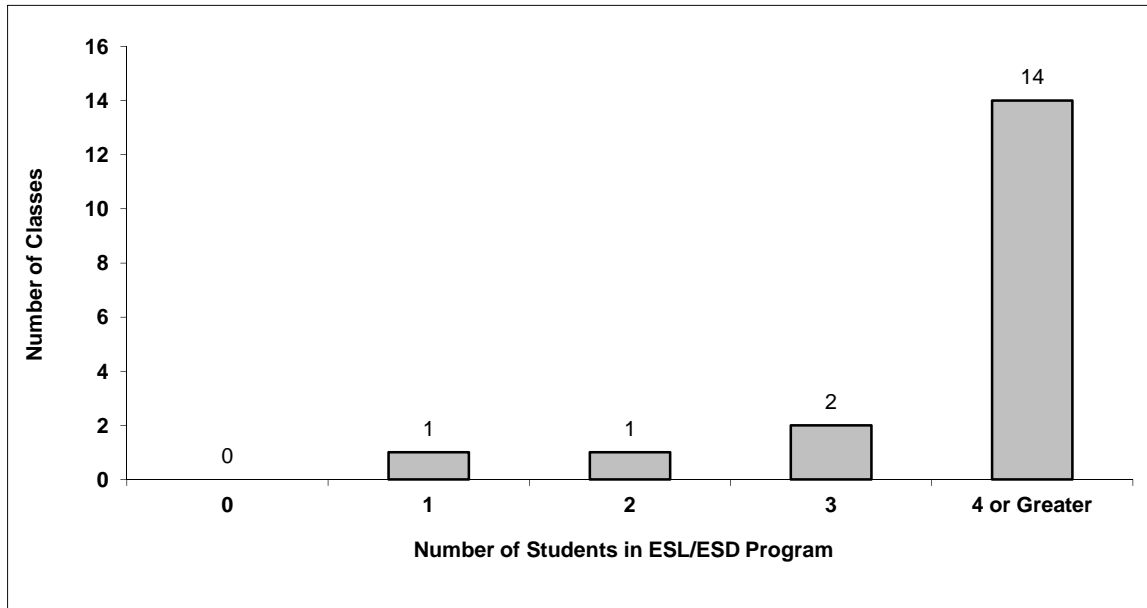


District - Students in English as a Second Language/Dialect (ESL/ESD) Program

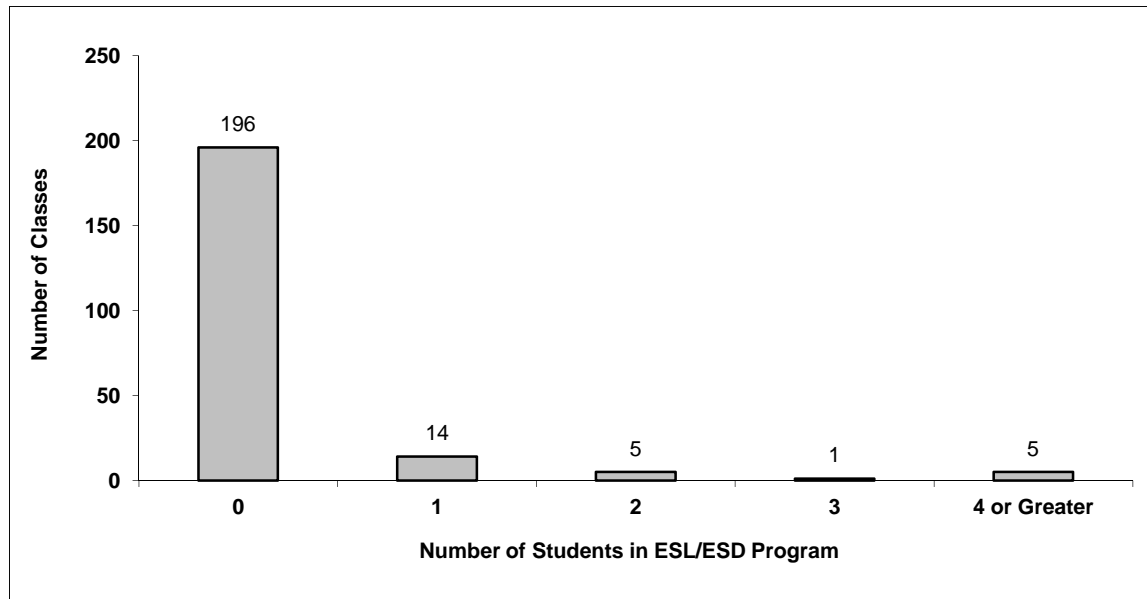
074 Gold Trail

Source: Class size data collection (as of September 30) from standard BC public schools.

Grades K-3 - Number of Classes in District with 'X' Number of Students in ESL/ESD Program



Grades 4-12 - Number of Classes in District with 'X' Number of Students in ESL/ESD Program



074 Gold Trail - Average Class Size by School

Source: Class size data collection (as of September 30) from standard BC public schools.

Ministry Code	School Name	Kindergarten	Grade 1 - 3	Grade 4 - 7	Grade 8 - 12
07430004	Ashcroft Elementary	21.0	22.9	26.5	-
07430016	Ashcroft Secondary	-	-	-	16.5
07430009	Cache Creek Elementary	20.0	19.0	20.0	-
07429012	Cayoosh Elementary	13.0	23.3	26.5	-
07474018	David Stoddart	10.0	12.8	14.5	11.7
07429014	George M Murray Elementary	19.0	21.0	26.5	-
07429007	Gold Bridge Community	-	4.0	4.0	-
07430010	Kumsheen Elem-Secondary	-	-	-	14.0
07429015	Lillooet Secondary	-	-	-	16.1
07430007	Lytton Elementary	12.0	13.3	20.5	-
07474006	Sk'il' Mountain Community School	-	-	-	14.9

Glossary

Term	Definition / Notes
English as a Second Language/Dialect (ESL/ESD) Program	<ul style="list-style-type: none"> • A program offered to students whose primary language(s) is/are other than English, and who may require additional services.
Grade	<ul style="list-style-type: none"> • The assigned grade of a student on September 30.
KH	<ul style="list-style-type: none"> • Kindergarten half-time
KF	<ul style="list-style-type: none"> • Kindergarten full-time
Number of Students	<ul style="list-style-type: none"> • Student population is calculated by headcount.
Student	<ul style="list-style-type: none"> • A person enrolled in a BC school. Student populations are calculated by headcount. Students include all adult and school-aged persons who are working toward a certificate of graduation.
Student Entitled to an Individual Education Plan	<ul style="list-style-type: none"> • A student for whom an Individual Education Plan (IEP) must be designed under the Individual Education Plan order, Ministerial Order 638/95.

District - Rationales for Classes with More Than 30 Students

074 - Gold Trail

Source: Class size data collection (as of September 30) from standard BC public schools.

Under the *School Act* whenever a class in grades 4 to 12 exceeds 30 students, the principal and the superintendent must confirm that in their opinion, the learning conditions in that classroom are appropriate for the students. In addition, the principal must state the reasons or rationale for that class exceeding 30 students. If parents have questions regarding the information in this report, they should contact the school principal.

Ministry Code	School Name	Division/Class	No. of Students	Rationale
---------------	-------------	----------------	-----------------	-----------