

# Overview of Class Size and Composition in British Columbia Public Schools 2011/12

## School District 064 Gulf Islands

These class size data are current as of September 30, 2011 and have been verified by school districts.

---

### **PLEASE NOTE**

The Ministry makes small and continuous improvements to the quality of its data. Sometimes these changes result in differences from previously published reports. The data in this report are the most accurate data available at time of publication.

Ministry reports are available at <http://www.bced.gov.bc.ca/reporting/>

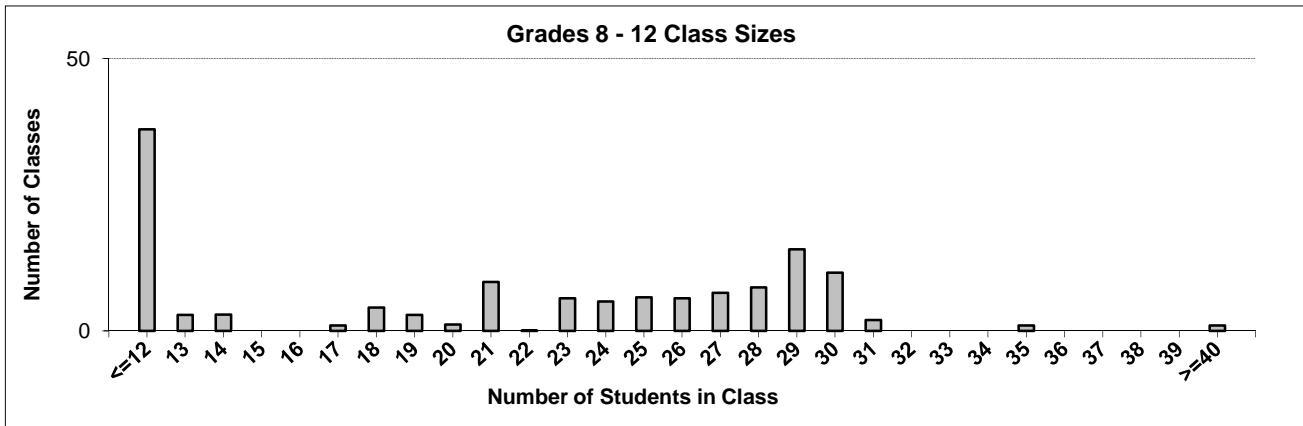
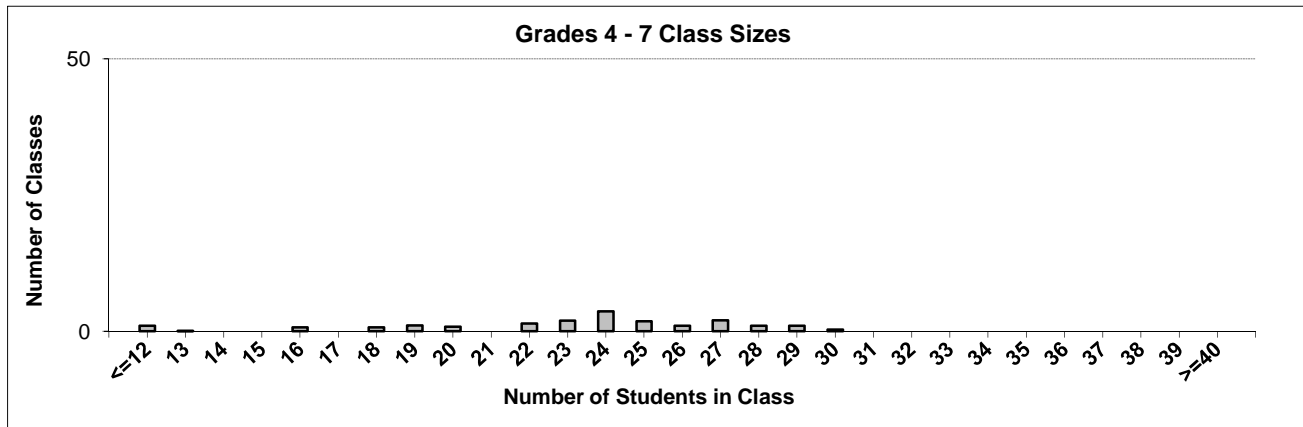
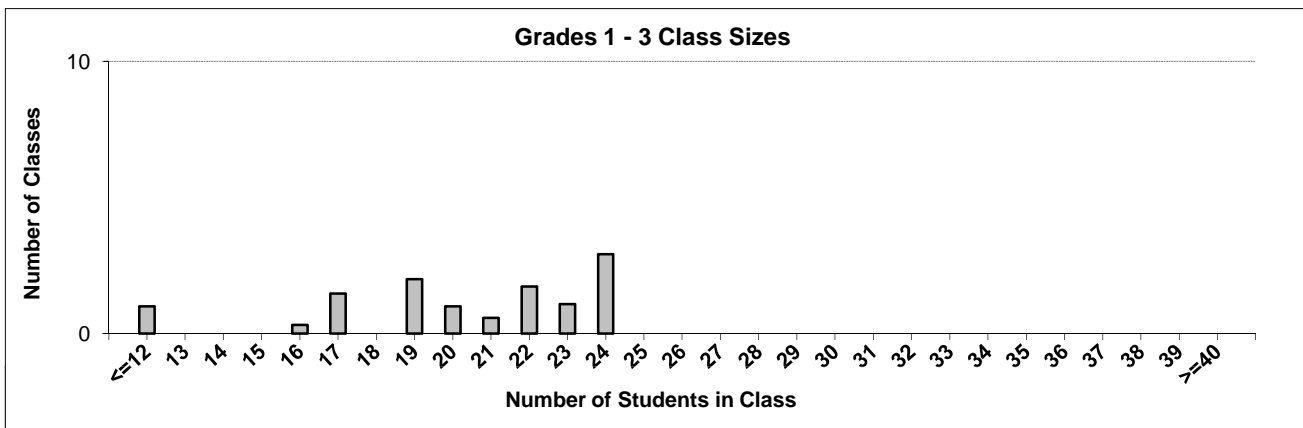
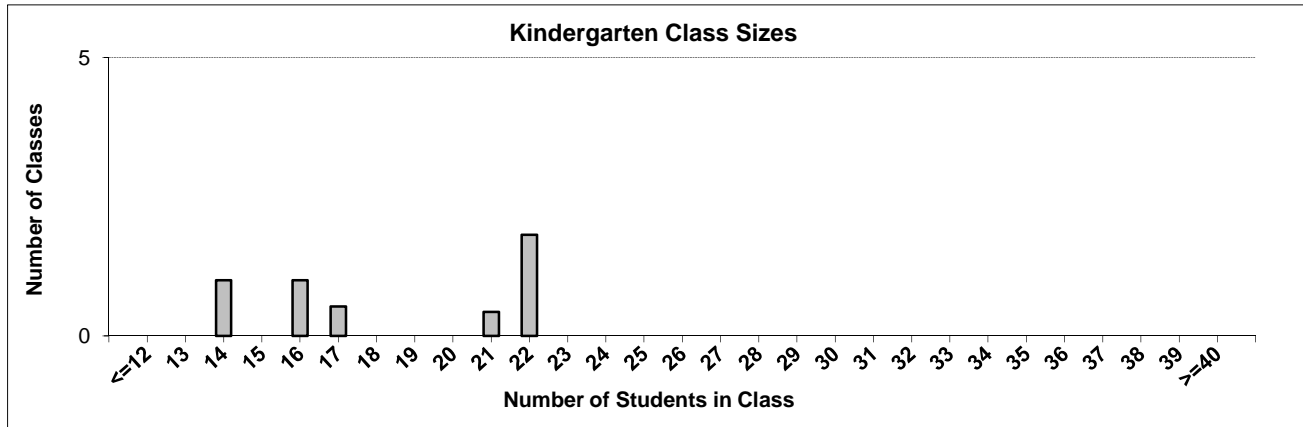
Contact the Information Department at [educ.reportingunit@gov.bc.ca](mailto:educ.reportingunit@gov.bc.ca)

---

# District Class Sizes

## 064 Gulf Islands

Source: Class size data collection (as of September 30) from standard BC public schools.



---

## District - Average Class Size

---

### 064 Gulf Islands

Source: Class size data collection (as of September 30) from standard BC public schools.

District - Average Class Size	Kindergarten	Grade 1 - 3	Grade 4 - 7	Grade 8 - 12
	18.4	20.3	22.6	20.0

Province - Average Class Size	Kindergarten	Grade 1 - 3	Grade 4 - 7	Grade 8 - 12
	18.5	20.6	25.9	25.0

Number of Reported Classes with Assigned Education Assistants	42
---	----

Number of Reported Schools in District	10
--	----

Number of Reported Classes in District	165
--	-----

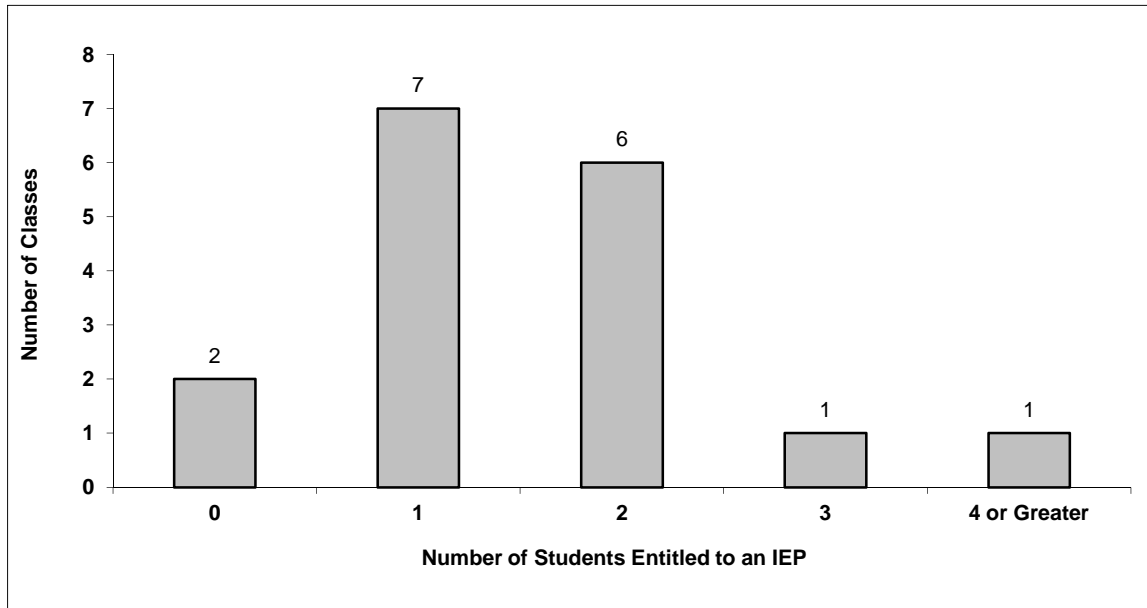
Number of Reported Classes in District with more than 30 Students	4
---	---

# District - Students Entitled to an Individual Education Plan (IEP)

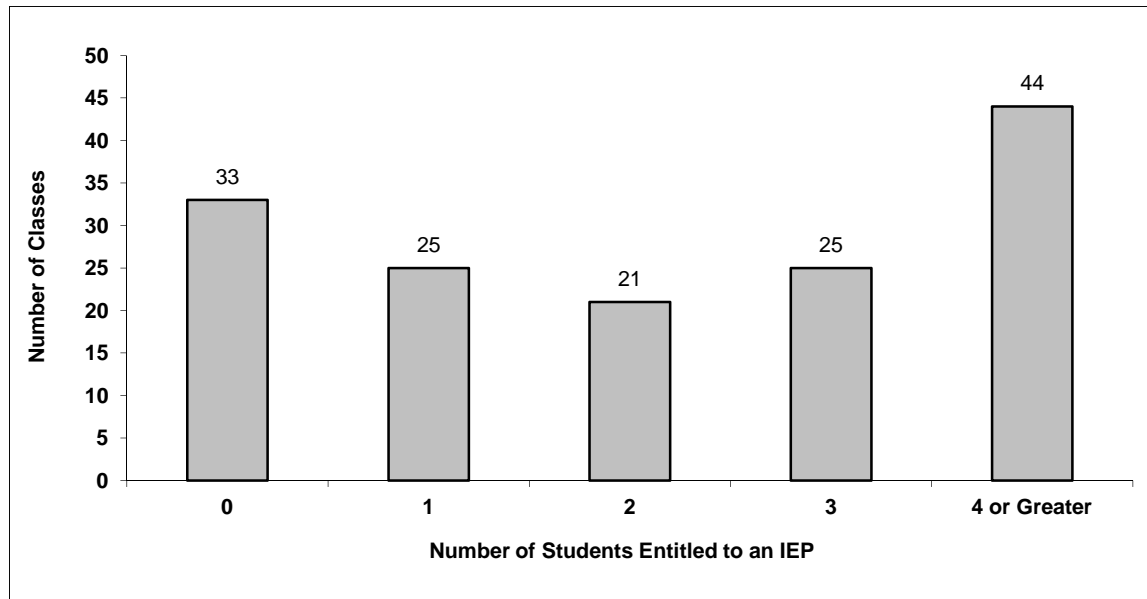
## 064 Gulf Islands

Source: Class size data collection (as of September 30) from standard BC public schools.

Grades K-3 - Number of Classes in District with 'X' Number of Students Entitled to an IEP



Grades 4-12 - Number of Classes in District with 'X' Number of Students Entitled to an IEP

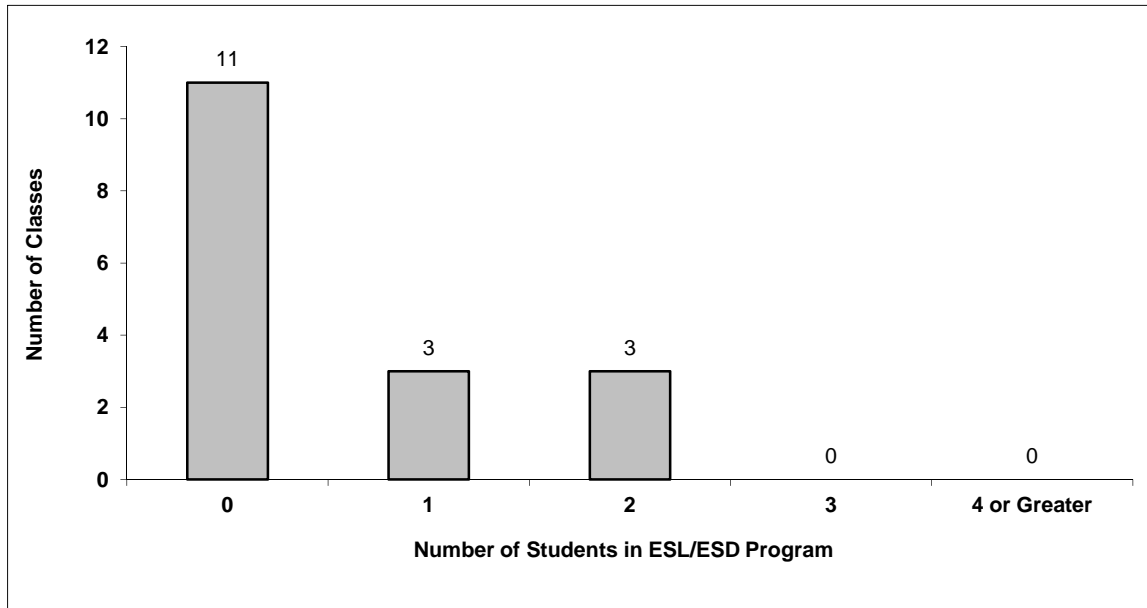


# District - Students in English as a Second Language/Dialect (ESL/ESD) Program

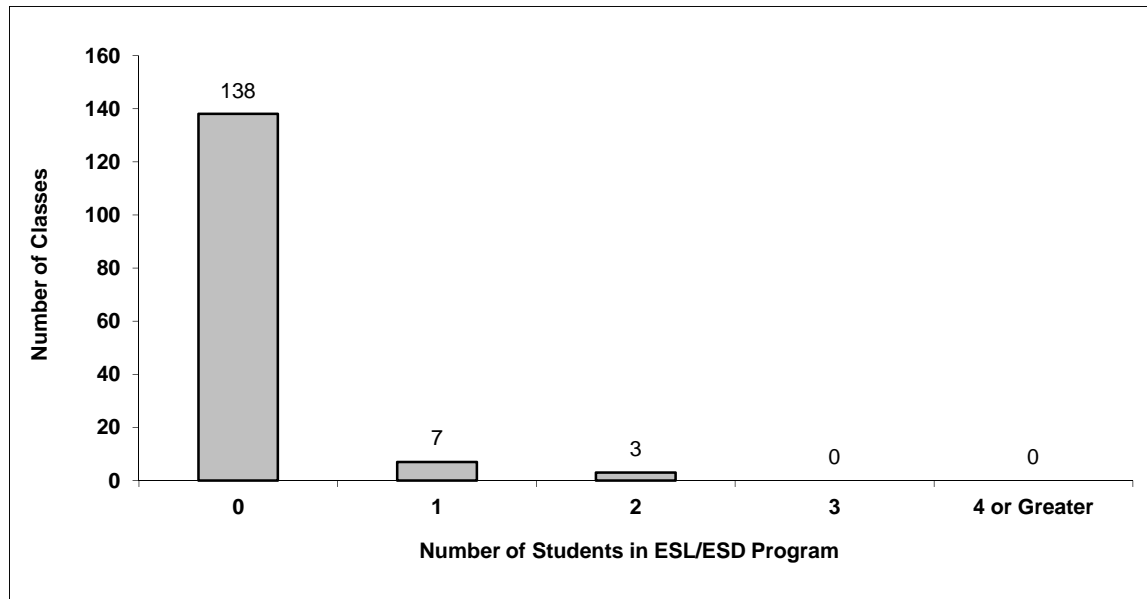
## 064 Gulf Islands

Source: Class size data collection (as of September 30) from standard BC public schools.

Grades K-3 - Number of Classes in District with 'X' Number of Students in ESL/ESD Program



Grades 4-12 - Number of Classes in District with 'X' Number of Students in ESL/ESD Program



## 064 Gulf Islands - Average Class Size by School

Source: Class size data collection (as of September 30) from standard BC public schools.

Ministry Code	School Name	Kindergarten	Grade 1 - 3	Grade 4 - 7	Grade 8 - 12
06464007	Fernwood Elementary	14.0	17.9	25.8	-
06464009	Fulford Community Elementary	22.0	20.4	22.5	-
06464005	Galiano Community School	17.0	16.7	7.7	10.7
06464010	Gulf Islands Secondary	-	-	-	20.8
06464003	Mayne Island School	17.0	17.0	25.0	8.6
06464008	Pender Islands Elem-Secondary	22.0	20.8	21.6	12.2
06464002	Salt Spring Elementary	17.5	23.5	24.0	-
06464006	Salt Spring Island Middle School	-	-	25.8	21.1
06464004	Saturna Island Elementary	-	-	17.5	11.2
06499219	Windsor House School	-	-	-	24.0

## Glossary

Term	Definition / Notes
<b>English as a Second Language/Dialect (ESL/ESD) Program</b>	<ul style="list-style-type: none"> <li>• A program offered to students whose primary language(s) is/are other than English, and who may require additional services.</li> </ul>
<b>Grade</b>	<ul style="list-style-type: none"> <li>• The assigned grade of a student on September 30.</li> </ul>
<b>KH</b>	<ul style="list-style-type: none"> <li>• Kindergarten half-time</li> </ul>
<b>KF</b>	<ul style="list-style-type: none"> <li>• Kindergarten full-time</li> </ul>
<b>Number of Students</b>	<ul style="list-style-type: none"> <li>• Student population is calculated by headcount.</li> </ul>
<b>Student</b>	<ul style="list-style-type: none"> <li>• A person enrolled in a BC school. Student populations are calculated by headcount. Students include all adult and school-aged persons who are working toward a certificate of graduation.</li> </ul>
<b>Student Entitled to an Individual Education Plan</b>	<ul style="list-style-type: none"> <li>• A student for whom an Individual Education Plan (IEP) must be designed under the Individual Education Plan order, Ministerial Order 638/95.</li> </ul>



## District - Rationales for Classes with More Than 30 Students

### 064 - Gulf Islands

Source: Class size data collection (as of September 30) from standard BC public schools.

Under the *School Act* whenever a class in grades 4 to 12 exceeds 30 students, the principal and the superintendent must confirm that in their opinion, the learning conditions in that classroom are appropriate for the students. In addition, the principal must state the reasons or rationale for that class exceeding 30 students. If parents have questions regarding the information in this report, they should contact the school principal.

Ministry Code	School Name	Division/Class	No. of Students	Rationale
06464010	Gulf Islands Secondary	CHORAL MUSIC 11: CONCERT CHOIR (01), CHORAL MUSIC 12: CONCERT CHOIR (01), MUSIC	55	This class and learning environment are not compromised by the size indicated.
06464010	Gulf Islands Secondary	BA EDUCATION 11A (06), BA EDUCATION 12A (06), PHYSICAL EDUCATION 10 (05), PHYSIC	31	The nature of this class and learning environment is such that it is not adversely affected by size and composition indicated.
06464010	Gulf Islands Secondary	BA VISUAL AND PERFORMING ARTS 10C (01), BA VISUAL AND PERFORMING ARTS 11C (01),	35	The nature of this class is such that the learning environment and opportunities are not adversely affected by size indicated.
06464010	Gulf Islands Secondary	ENGLISH 10 (04), ENGLISH LANGUAGE ARTS 9 (04)	31	The situation is appropriate to student learning.