

Overview of Class Size and Composition in British Columbia Public Schools 2011/12

School District 052 Prince Rupert

These class size data are current as of September 30, 2011 and have been verified by school districts.

PLEASE NOTE

The Ministry makes small and continuous improvements to the quality of its data. Sometimes these changes result in differences from previously published reports. The data in this report are the most accurate data available at time of publication.

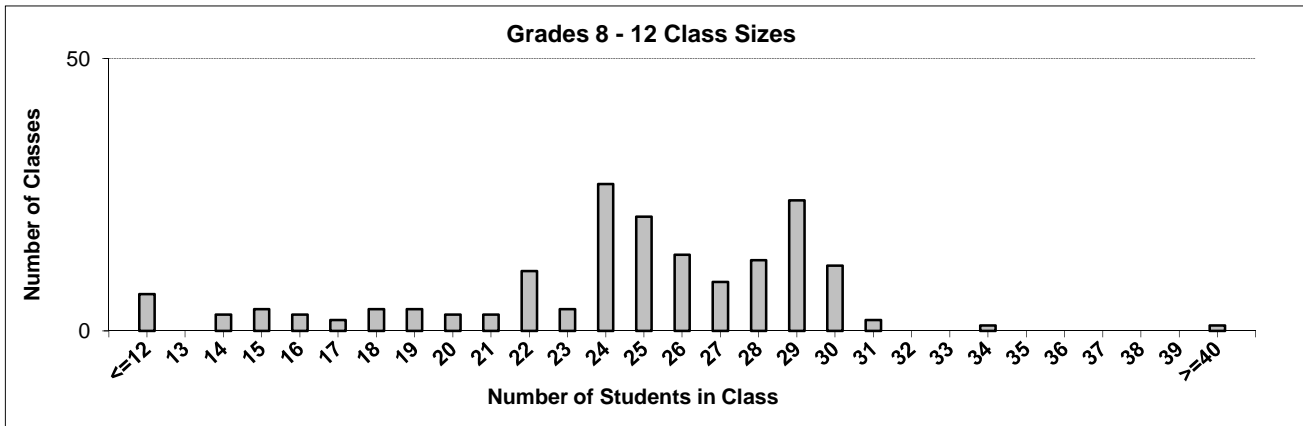
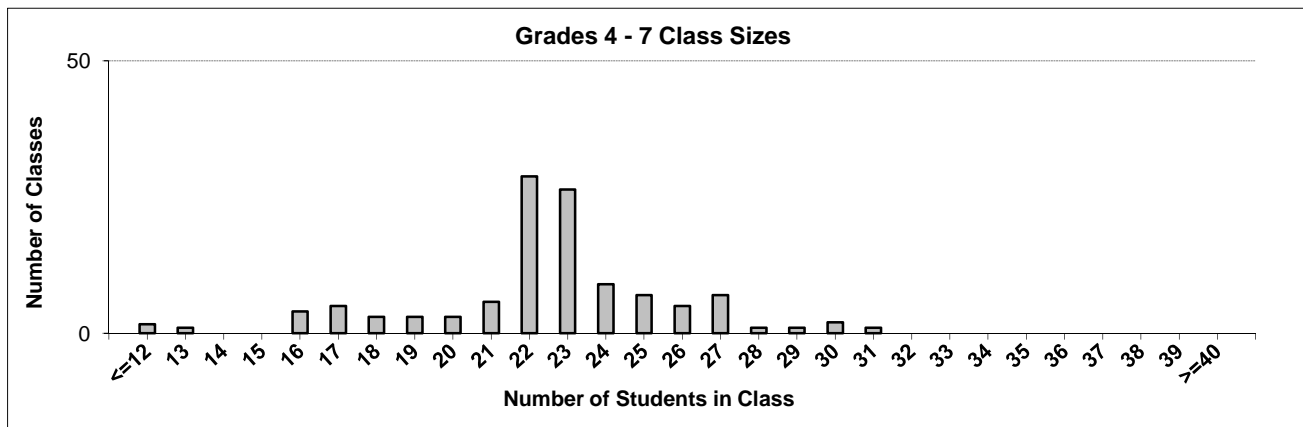
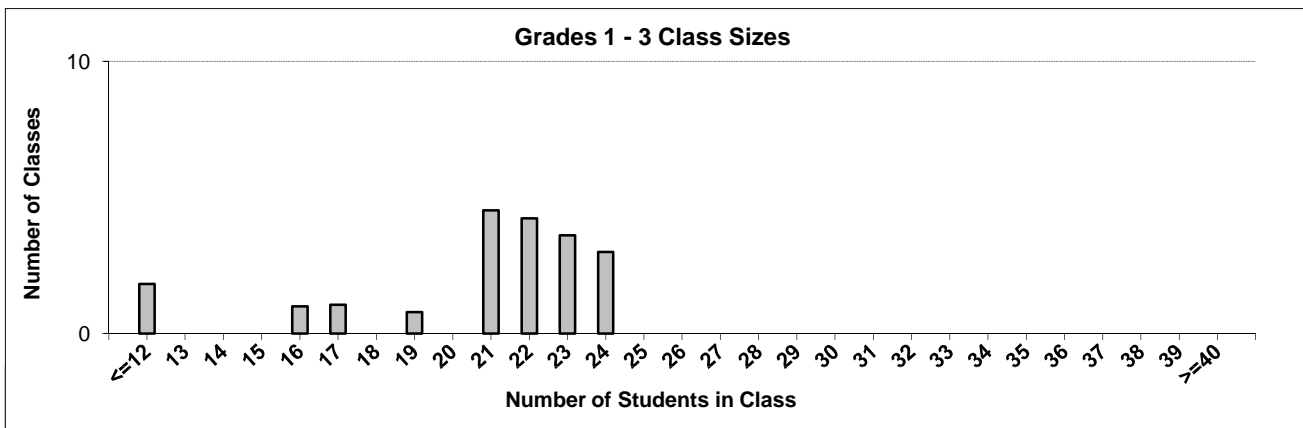
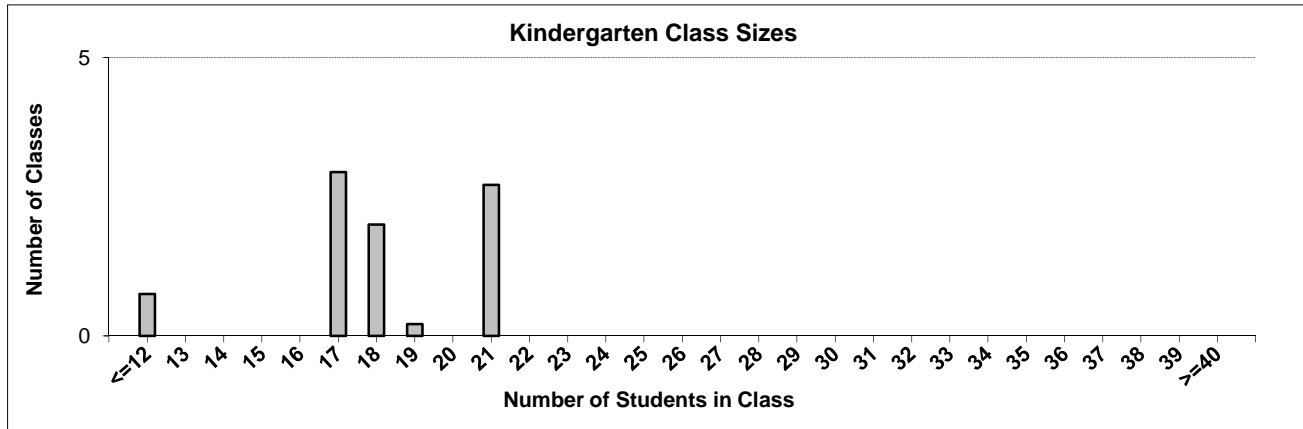
Ministry reports are available at <http://www.bced.gov.bc.ca/reporting/>

Contact the Information Department at educ.reportingunit@gov.bc.ca

District Class Sizes

052 Prince Rupert

Source: Class size data collection (as of September 30) from standard BC public schools.



District - Average Class Size

052 Prince Rupert

Source: Class size data collection (as of September 30) from standard BC public schools.

District - Average Class Size	Kindergarten	Grade 1 - 3	Grade 4 - 7	Grade 8 - 12
	18.0	20.5	22.4	24.4

Province - Average Class Size	Kindergarten	Grade 1 - 3	Grade 4 - 7	Grade 8 - 12
	18.5	20.6	25.9	25.0

Number of Reported Classes with Assigned Education Assistants	247
---	-----

Number of Reported Schools in District	8
--	---

Number of Reported Classes in District	315
--	-----

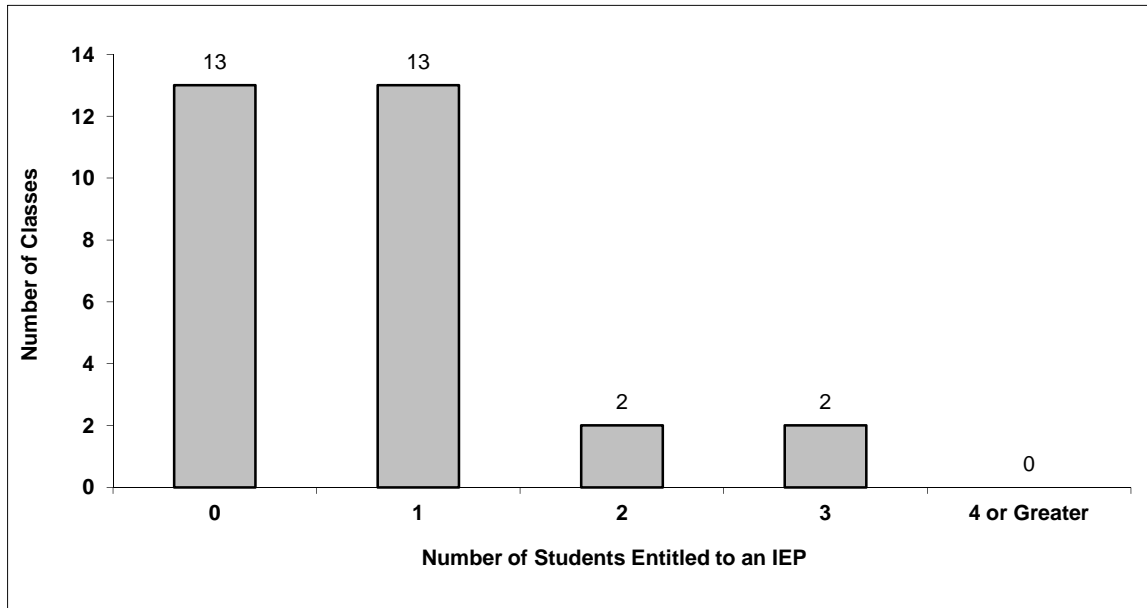
Number of Reported Classes in District with more than 30 Students	5
---	---

District - Students Entitled to an Individual Education Plan (IEP)

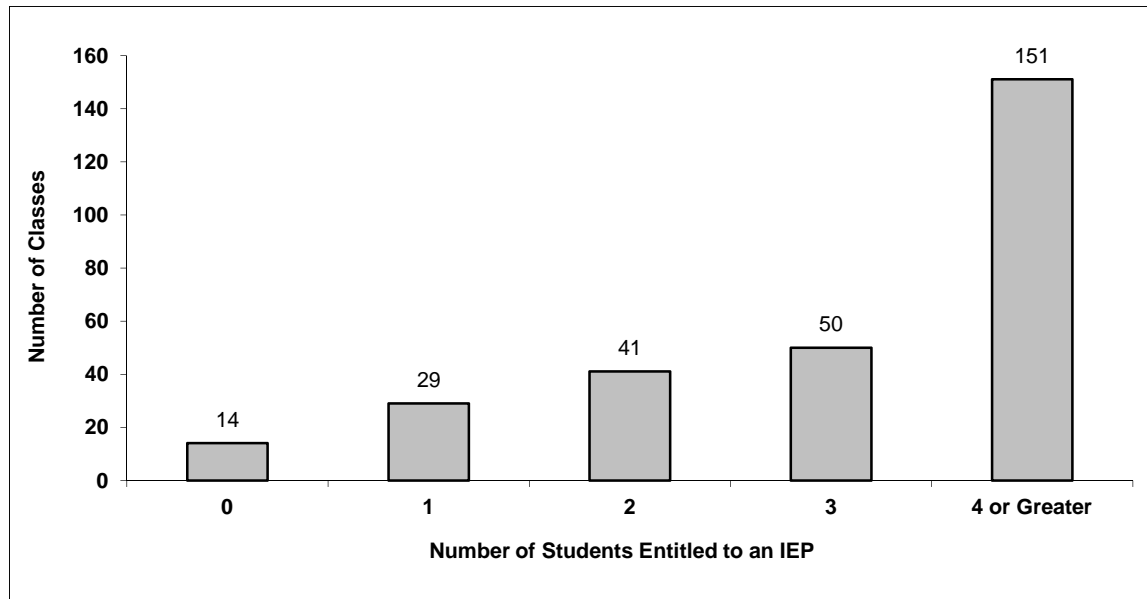
052 Prince Rupert

Source: Class size data collection (as of September 30) from standard BC public schools.

Grades K-3 - Number of Classes in District with 'X' Number of Students Entitled to an IEP



Grades 4-12 - Number of Classes in District with 'X' Number of Students Entitled to an IEP

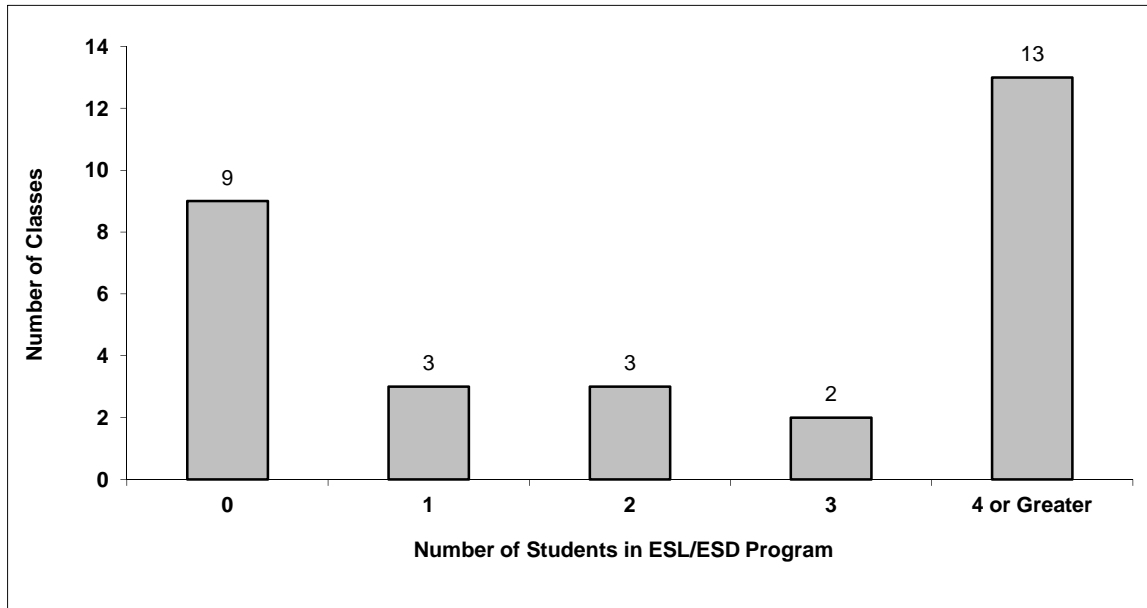


District - Students in English as a Second Language/Dialect (ESL/ESD) Program

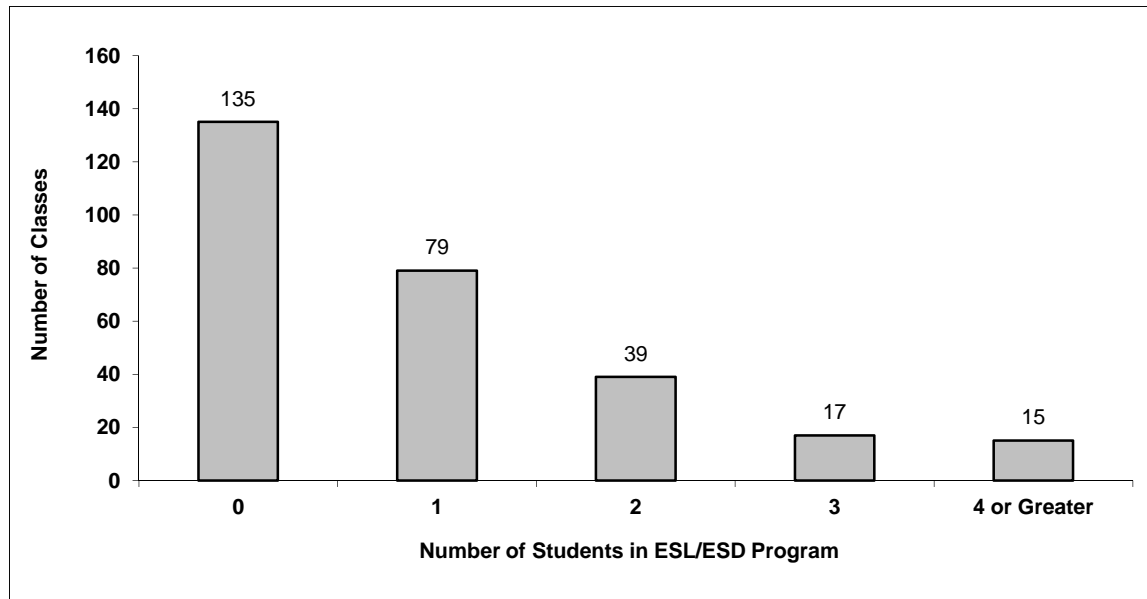
052 Prince Rupert

Source: Class size data collection (as of September 30) from standard BC public schools.

Grades K-3 - Number of Classes in District with 'X' Number of Students in ESL/ESD Program



Grades 4-12 - Number of Classes in District with 'X' Number of Students in ESL/ESD Program



052 Prince Rupert - Average Class Size by School

Source: Class size data collection (as of September 30) from standard BC public schools.

Ministry Code	School Name	Kindergarten	Grade 1 - 3	Grade 4 - 7	Grade 8 - 12
05252018	Charles Hays Secondary	-	-	-	25.2
05252003	Conrad Elementary School	17.5	21.8	26.3	-
05252017	Hartley Bay Elem-Jr Secondary	10.0	8.4	7.7	6.2
05252019	Lax Kxeen Elementary	21.0	21.5	25.5	-
05252014	Pineridge Elementary	21.0	22.2	26.0	-
05252005	Port Edward Elementary	12.0	14.3	17.0	-
05252020	Prince Rupert Middle	-	-	22.2	23.3
05252006	Roosevelt Park Elementary	17.5	21.9	23.4	-

Glossary

Term	Definition / Notes
English as a Second Language/Dialect (ESL/ESD) Program	<ul style="list-style-type: none"> • A program offered to students whose primary language(s) is/are other than English, and who may require additional services.
Grade	<ul style="list-style-type: none"> • The assigned grade of a student on September 30.
KH	<ul style="list-style-type: none"> • Kindergarten half-time
KF	<ul style="list-style-type: none"> • Kindergarten full-time
Number of Students	<ul style="list-style-type: none"> • Student population is calculated by headcount.
Student	<ul style="list-style-type: none"> • A person enrolled in a BC school. Student populations are calculated by headcount. Students include all adult and school-aged persons who are working toward a certificate of graduation.
Student Entitled to an Individual Education Plan	<ul style="list-style-type: none"> • A student for whom an Individual Education Plan (IEP) must be designed under the Individual Education Plan order, Ministerial Order 638/95.

District - Rationales for Classes with More Than 30 Students

052 - Prince Rupert

Source: Class size data collection (as of September 30) from standard BC public schools.

Under the *School Act* whenever a class in grades 4 to 12 exceeds 30 students, the principal and the superintendent must confirm that in their opinion, the learning conditions in that classroom are appropriate for the students. In addition, the principal must state the reasons or rationale for that class exceeding 30 students. If parents have questions regarding the information in this report, they should contact the school principal.

Ministry Code	School Name	Division/Class	No. of Students	Rationale
05252018	Charles Hays Secondary	CHEMISTRY 11 (02)	31	The alternative is to exclude one or more students from the course/class
05252018	Charles Hays Secondary	INSTRUMENTAL MUSIC 11: CONCERT BAND (01), INSTRUMENTAL MUSIC 12: CONCERT BAND (0)	43	Subject content is effectively conveyed in a grouping exceeding 30
05252018	Charles Hays Secondary	ENGLISH 12 (01)	31	The alternative is to exclude one or more students from the course/class
05252018	Charles Hays Secondary	BA VISUAL AND PERFORMING ARTS 10C (01), BA VISUAL AND PERFORMING ARTS 11C (01),	34	Subject content is effectively conveyed in a grouping exceeding 30
05252020	Prince Rupert Middle	MUSIC 6 (02)	31	Band teacher was willing to have a class of over 30. She was also provided a CCW to support her bc it is a beginners band class