

Overview of Class Size and Composition in British Columbia Public Schools 2011/12

School District 051 Boundary

These class size data are current as of September 30, 2011 and have been verified by school districts.

PLEASE NOTE

The Ministry makes small and continuous improvements to the quality of its data. Sometimes these changes result in differences from previously published reports. The data in this report are the most accurate data available at time of publication.

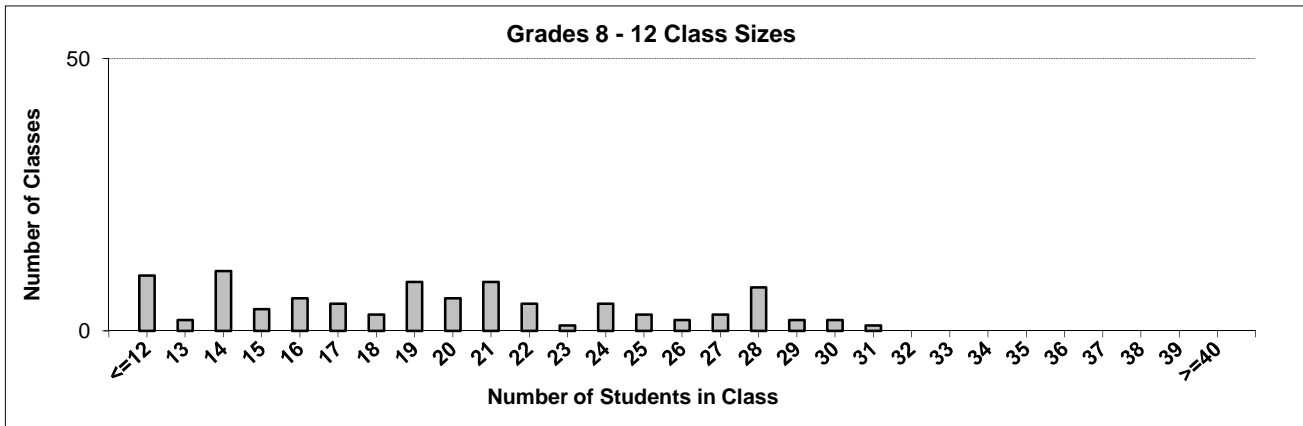
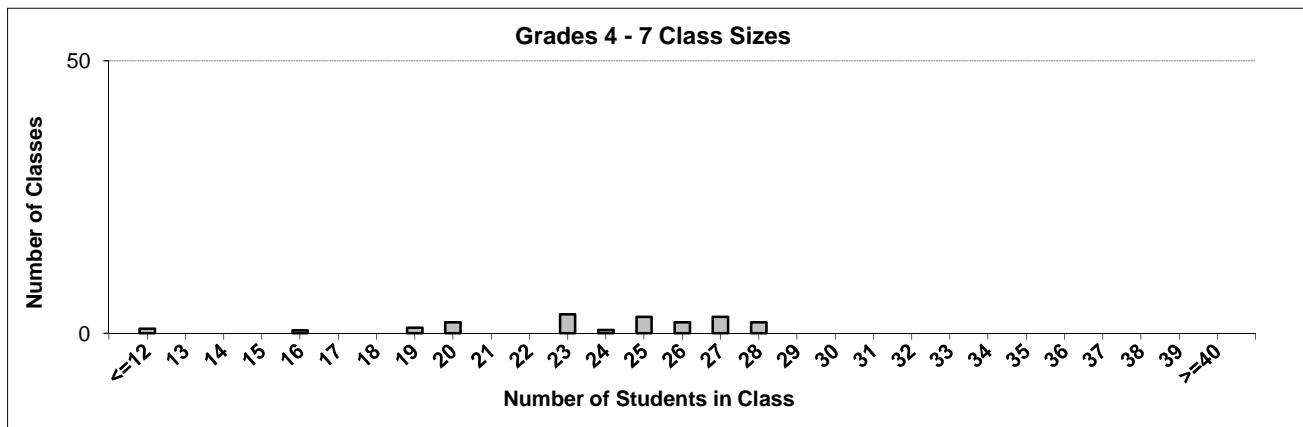
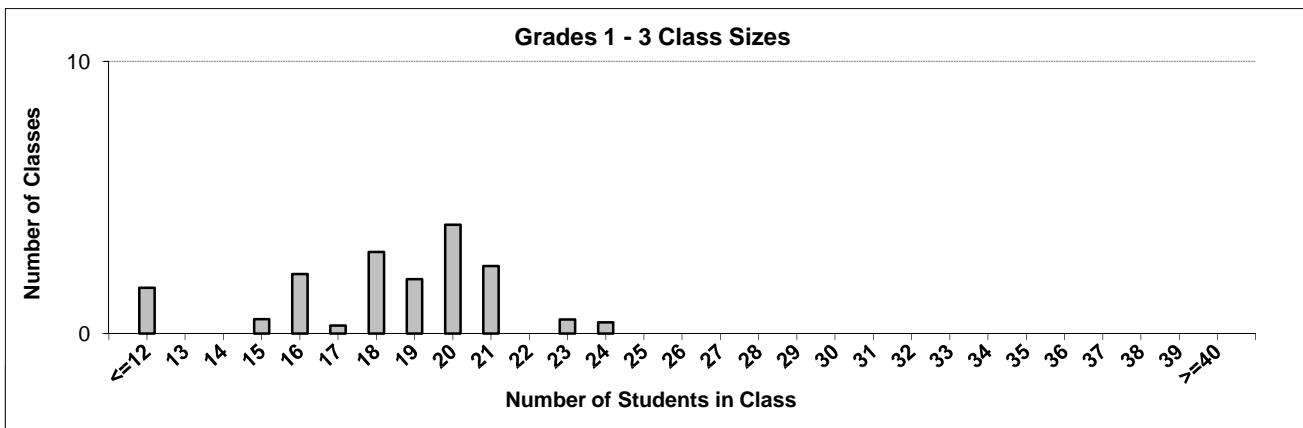
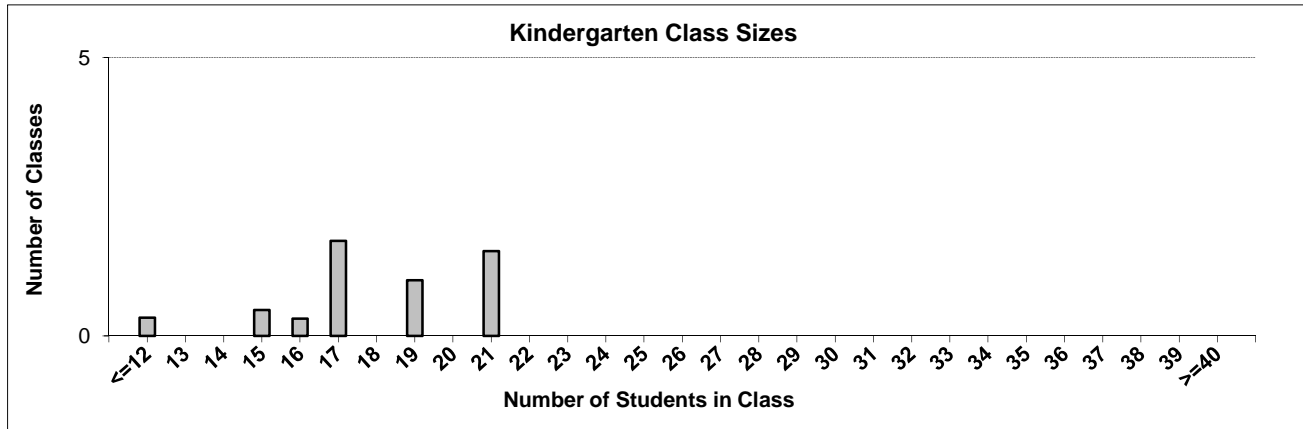
Ministry reports are available at <http://www.bced.gov.bc.ca/reporting/>

Contact the Information Department at educ.reportingunit@gov.bc.ca

District Class Sizes

051 Boundary

Source: Class size data collection (as of September 30) from standard BC public schools.



District - Average Class Size

051 Boundary

Source: Class size data collection (as of September 30) from standard BC public schools.

District - Average Class Size	Kindergarten	Grade 1 - 3	Grade 4 - 7	Grade 8 - 12
	17.8	18.1	23.4	19.6

Province - Average Class Size	Kindergarten	Grade 1 - 3	Grade 4 - 7	Grade 8 - 12
	18.5	20.6	25.9	25.0

Number of Reported Classes with Assigned Education Assistants	48
---	----

Number of Reported Schools in District	10
--	----

Number of Reported Classes in District	138
--	-----

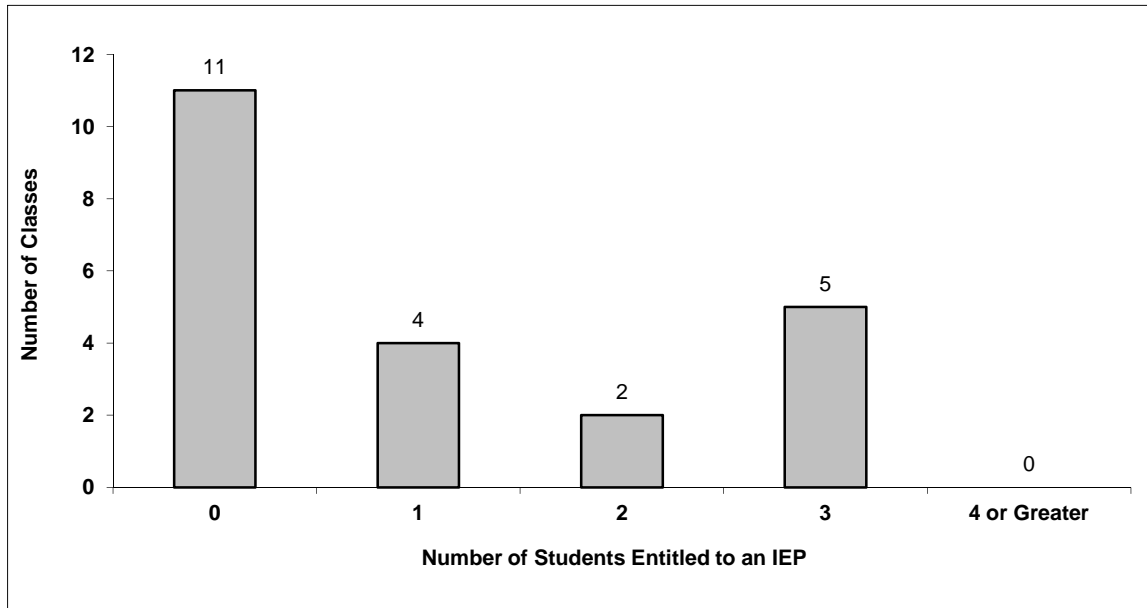
Number of Reported Classes in District with more than 30 Students	1
---	---

District - Students Entitled to an Individual Education Plan (IEP)

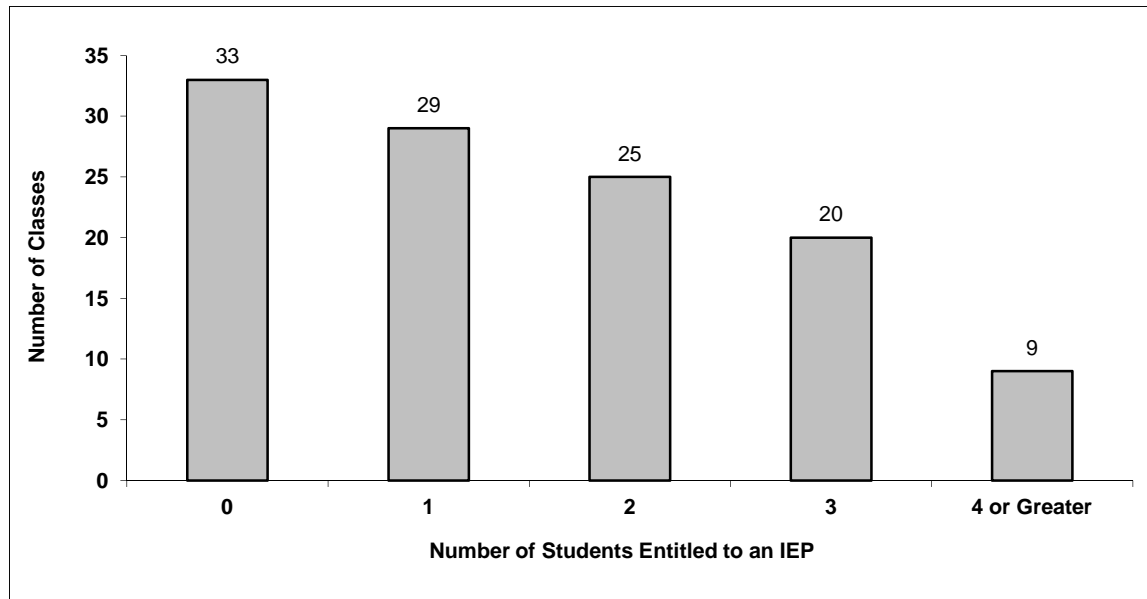
051 Boundary

Source: Class size data collection (as of September 30) from standard BC public schools.

Grades K-3 - Number of Classes in District with 'X' Number of Students Entitled to an IEP



Grades 4-12 - Number of Classes in District with 'X' Number of Students Entitled to an IEP

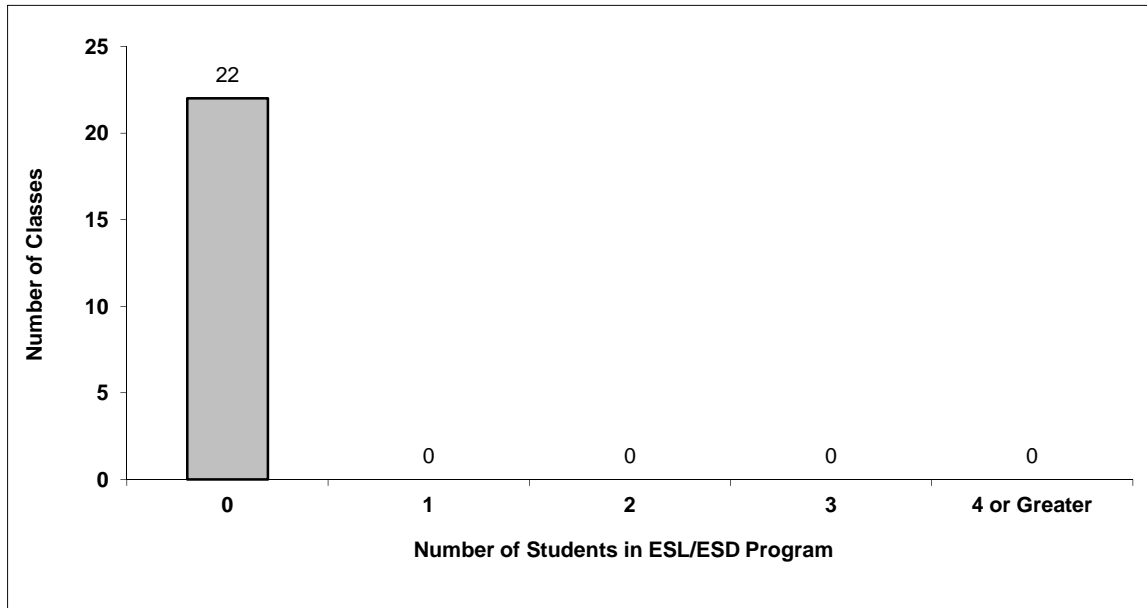


District - Students in English as a Second Language/Dialect (ESL/ESD) Program

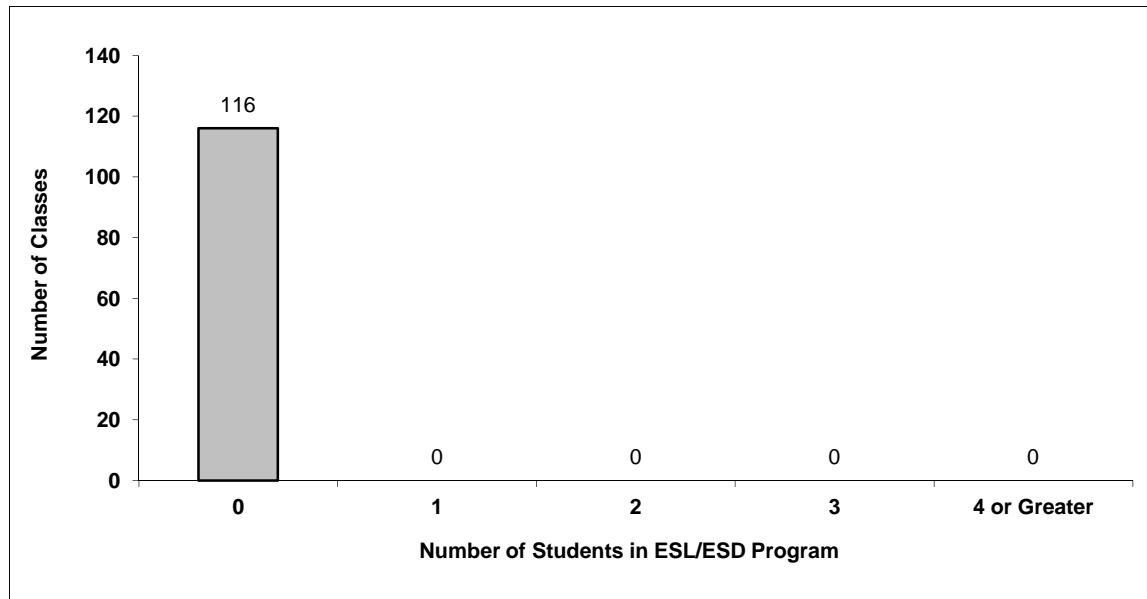
051 Boundary

Source: Class size data collection (as of September 30) from standard BC public schools.

Grades K-3 - Number of Classes in District with 'X' Number of Students in ESL/ESD Program



Grades 4-12 - Number of Classes in District with 'X' Number of Students in ESL/ESD Program



051 Boundary - Average Class Size by School

Source: Class size data collection (as of September 30) from standard BC public schools.

Ministry Code	School Name	Kindergarten	Grade 1 - 3	Grade 4 - 7	Grade 8 - 12
05113002	Beaverdell Elementary	8.0	8.0	-	-
05151013	Big White Community School	10.0	10.0	6.0	6.0
05113010	Boundary Central Secondary	-	-	-	16.7
05112004	Christina Lake Elementary	15.0	15.7	20.4	-
05112001	Dr. D. A. Perley Elementary	18.0	19.8	25.1	-
05112002	Grand Forks Secondary School	-	-	-	20.9
05113007	Greenwood Elementary	-	-	22.5	-
05112005	John A. Hutton Elementary	21.0	20.1	26.2	-
05113005	Midway Elementary	16.0	17.2	-	-
05113012	West Boundary Elementary	17.0	19.6	23.7	-

Glossary

Term	Definition / Notes
English as a Second Language/Dialect (ESL/ESD) Program	<ul style="list-style-type: none"> • A program offered to students whose primary language(s) is/are other than English, and who may require additional services.
Grade	<ul style="list-style-type: none"> • The assigned grade of a student on September 30.
KH	<ul style="list-style-type: none"> • Kindergarten half-time
KF	<ul style="list-style-type: none"> • Kindergarten full-time
Number of Students	<ul style="list-style-type: none"> • Student population is calculated by headcount.
Student	<ul style="list-style-type: none"> • A person enrolled in a BC school. Student populations are calculated by headcount. Students include all adult and school-aged persons who are working toward a certificate of graduation.
Student Entitled to an Individual Education Plan	<ul style="list-style-type: none"> • A student for whom an Individual Education Plan (IEP) must be designed under the Individual Education Plan order, Ministerial Order 638/95.

District - Rationales for Classes with More Than 30 Students

051 - Boundary

Source: Class size data collection (as of September 30) from standard BC public schools.

Under the *School Act* whenever a class in grades 4 to 12 exceeds 30 students, the principal and the superintendent must confirm that in their opinion, the learning conditions in that classroom are appropriate for the students. In addition, the principal must state the reasons or rationale for that class exceeding 30 students. If parents have questions regarding the information in this report, they should contact the school principal.

Ministry Code	School Name	Division/Class	No. of Students	Rationale
05112002	Grand Forks Secondary School	MATHEMATICS 8 (02)	31	There is two sections a Math 8 so the school created a small class for vulnerable students that has led to a larger class of 31 in the other section.