

Overview of Class Size and Composition in British Columbia Public Schools 2011/12

School District 048 Sea to Sky

These class size data are current as of September 30, 2011 and have been verified by school districts.

PLEASE NOTE

The Ministry makes small and continuous improvements to the quality of its data. Sometimes these changes result in differences from previously published reports. The data in this report are the most accurate data available at time of publication.

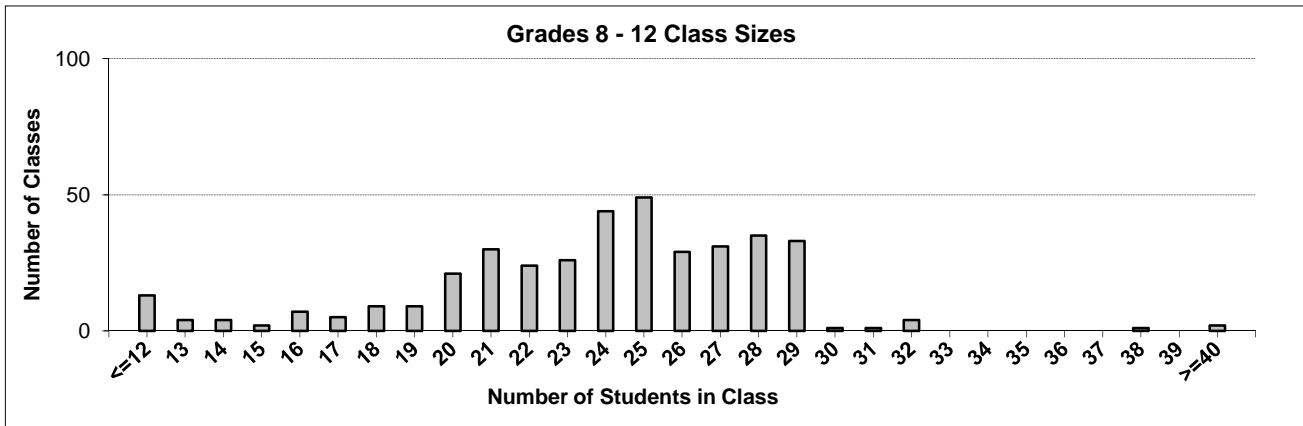
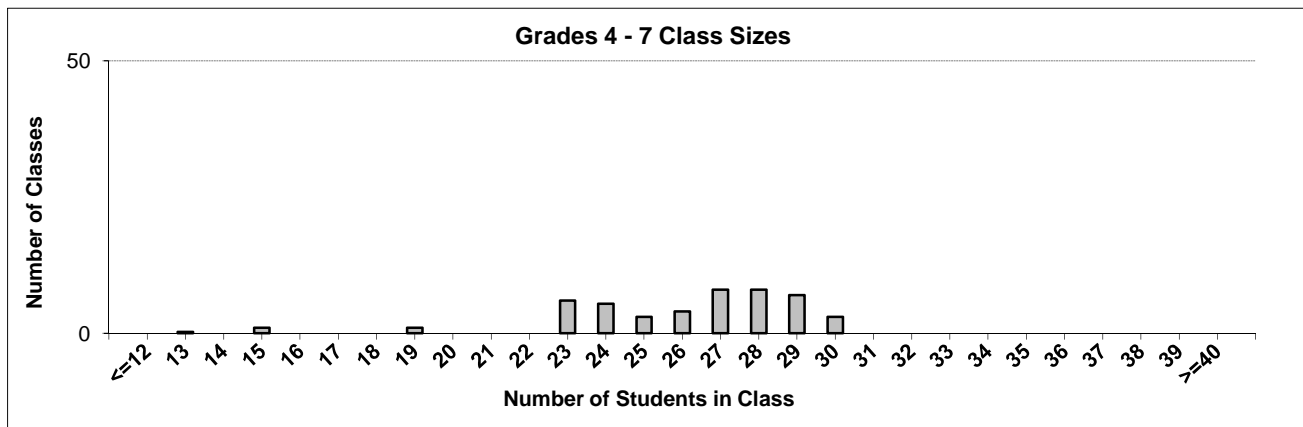
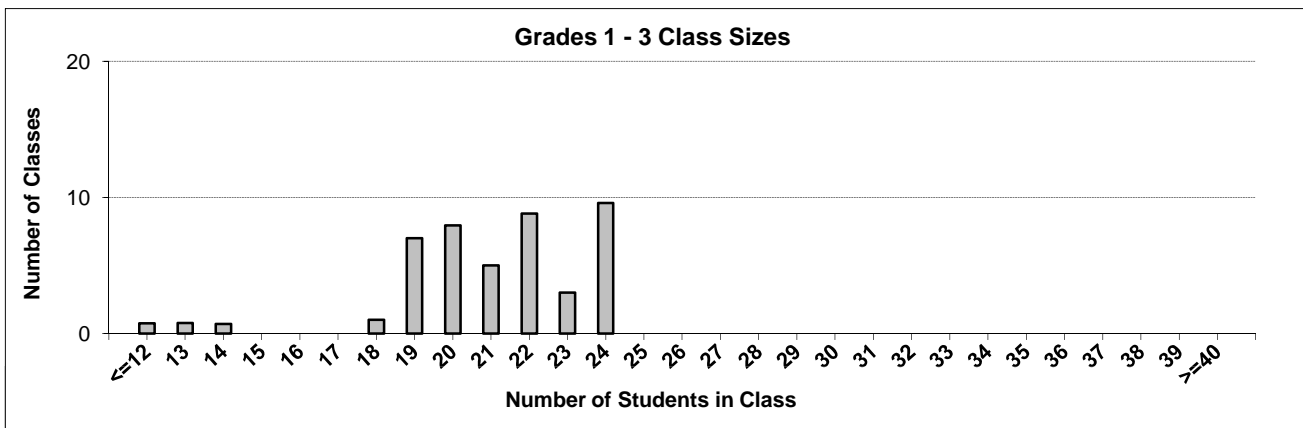
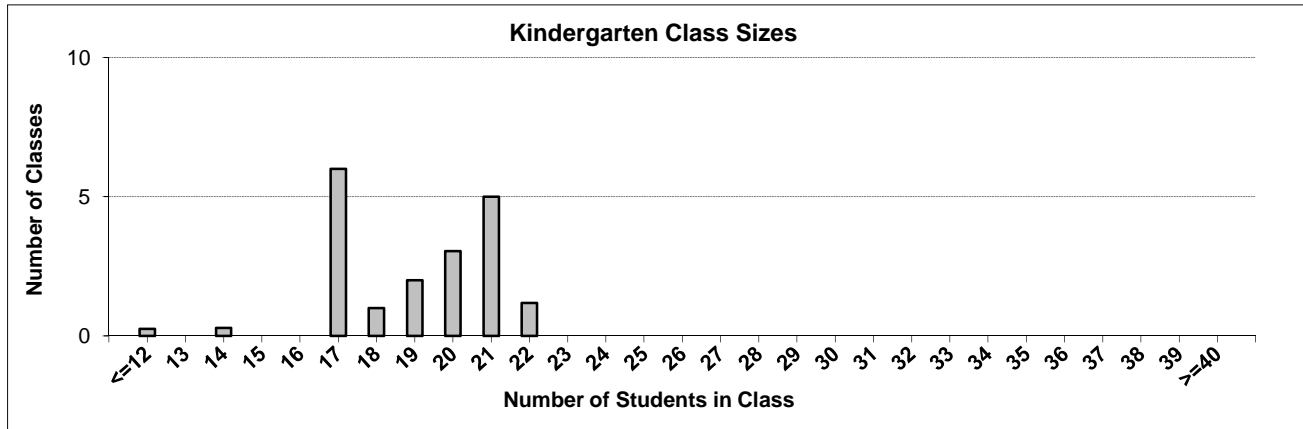
Ministry reports are available at <http://www.bced.gov.bc.ca/reporting/>

Contact the Information Department at educ.reportingunit@gov.bc.ca

District Class Sizes

048 Sea to Sky

Source: Class size data collection (as of September 30) from standard BC public schools.



District - Average Class Size

048 Sea to Sky

Source: Class size data collection (as of September 30) from standard BC public schools.

District - Average Class Size	Kindergarten	Grade 1 - 3	Grade 4 - 7	Grade 8 - 12
	19.0	21.0	26.1	23.8

Province - Average Class Size	Kindergarten	Grade 1 - 3	Grade 4 - 7	Grade 8 - 12
	18.5	20.6	25.9	25.0

Number of Reported Classes with Assigned Education Assistants	166
---	-----

Number of Reported Schools in District	14
--	----

Number of Reported Classes in District	494
--	-----

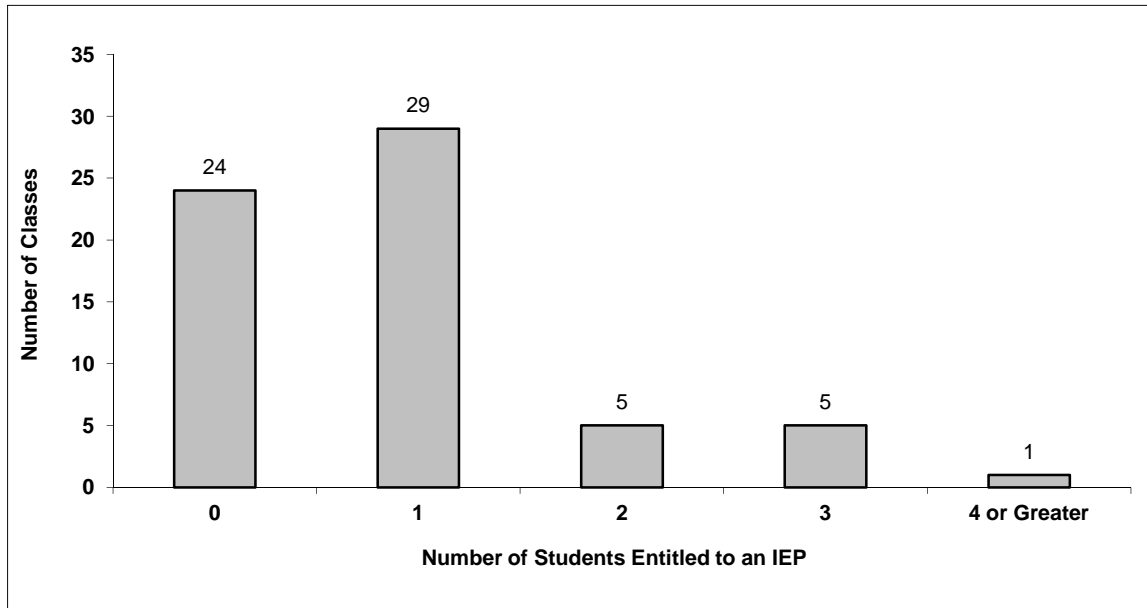
Number of Reported Classes in District with more than 30 Students	8
---	---

District - Students Entitled to an Individual Education Plan (IEP)

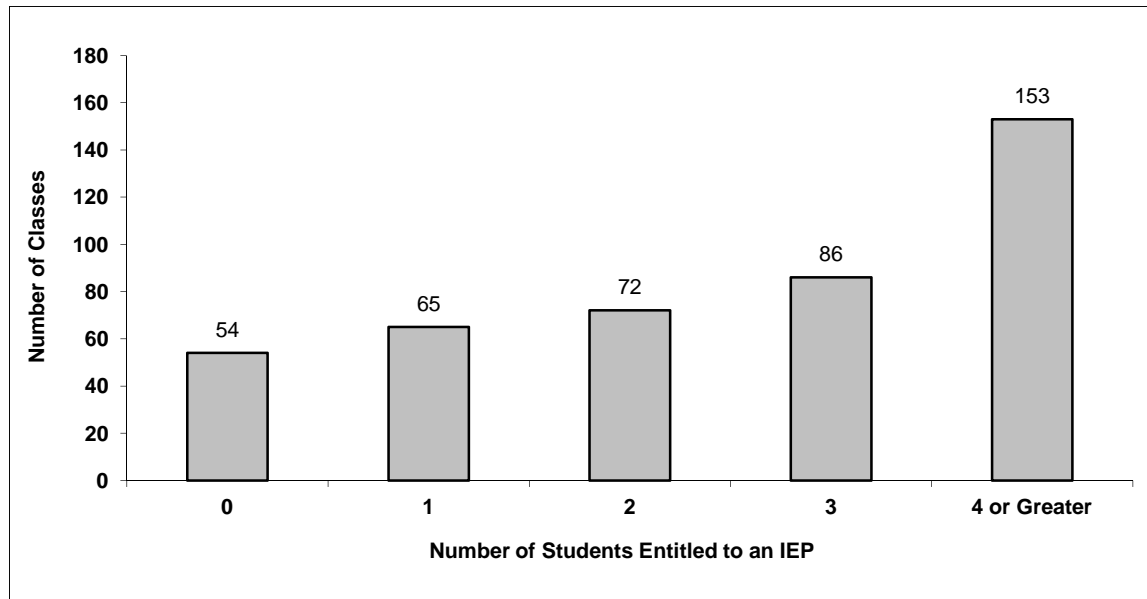
048 Sea to Sky

Source: Class size data collection (as of September 30) from standard BC public schools.

Grades K-3 - Number of Classes in District with 'X' Number of Students Entitled to an IEP



Grades 4-12 - Number of Classes in District with 'X' Number of Students Entitled to an IEP

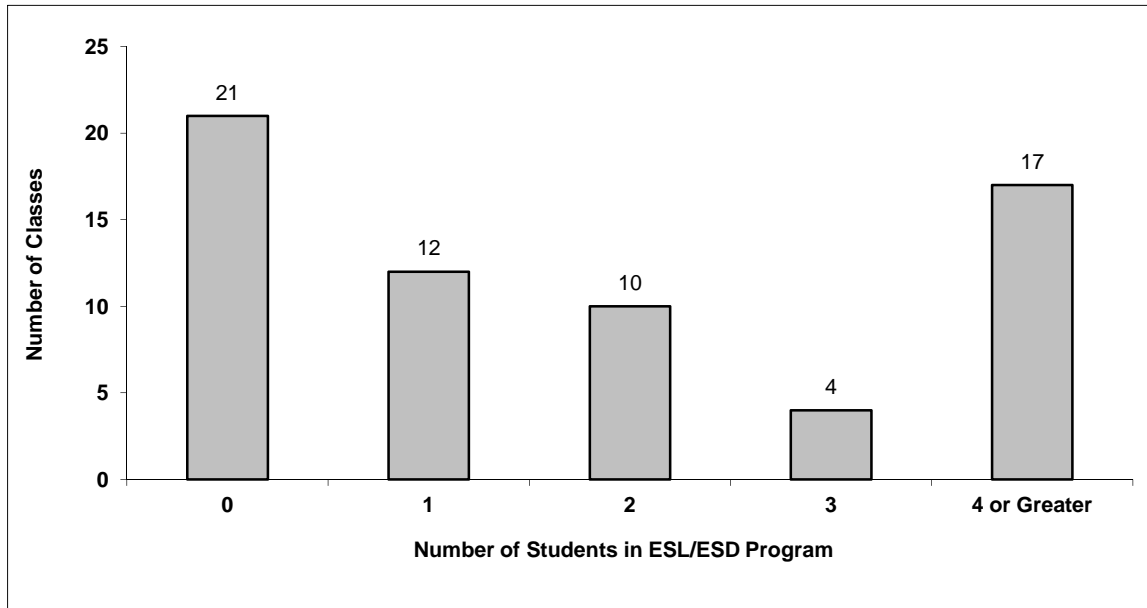


District - Students in English as a Second Language/Dialect (ESL/ESD) Program

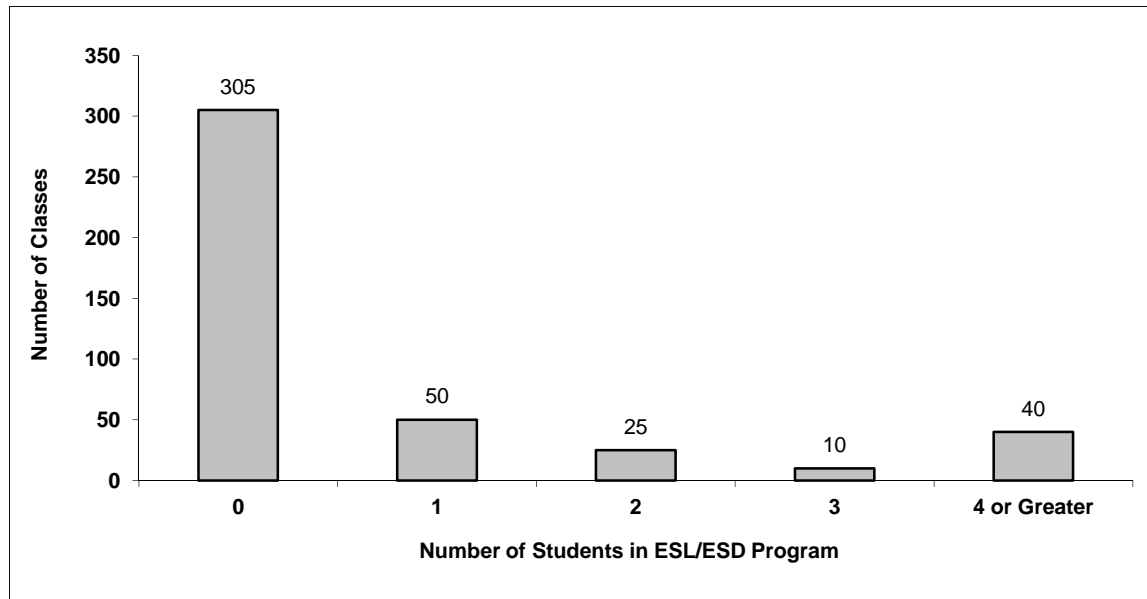
048 Sea to Sky

Source: Class size data collection (as of September 30) from standard BC public schools.

Grades K-3 - Number of Classes in District with 'X' Number of Students in ESL/ESD Program



Grades 4-12 - Number of Classes in District with 'X' Number of Students in ESL/ESD Program



048 Sea to Sky - Average Class Size by School

Source: Class size data collection (as of September 30) from standard BC public schools.

Ministry Code	School Name	Kindergarten	Grade 1 - 3	Grade 4 - 7	Grade 8 - 12
04848014	Blackwater Creek Elementary	14.0	14.0	-	-
04848023	Brackendale Elementary	17.7	20.7	27.0	-
04848016	Don Ross Secondary	-	-	-	24.3
04848018	Garibaldi Highlands Elementary	21.0	22.3	28.0	-
04848004	Howe Sound Secondary	-	-	-	24.2
04848008	Mamquam Elementary	17.0	21.9	25.3	-
04848020	Myrtle Philip Community School	18.6	21.3	27.0	-
04848021	Pemberton Secondary School	-	-	-	21.1
04848024	Signal Hill Elementary	20.3	20.9	27.6	-
04848025	Spring Creek Community School	21.0	23.8	24.0	-
04848011	Squamish Elementary	19.4	19.3	27.0	-
04848012	Stawamus Elementary	16.0	15.1	20.6	-
04848019	Valleycliffe Elementary	22.0	23.5	23.3	-
04848022	Whistler Secondary	-	-	-	24.0

Glossary

Term	Definition / Notes
English as a Second Language/Dialect (ESL/ESD) Program	<ul style="list-style-type: none"> • A program offered to students whose primary language(s) is/are other than English, and who may require additional services.
Grade	<ul style="list-style-type: none"> • The assigned grade of a student on September 30.
KH	<ul style="list-style-type: none"> • Kindergarten half-time
KF	<ul style="list-style-type: none"> • Kindergarten full-time
Number of Students	<ul style="list-style-type: none"> • Student population is calculated by headcount.
Student	<ul style="list-style-type: none"> • A person enrolled in a BC school. Student populations are calculated by headcount. Students include all adult and school-aged persons who are working toward a certificate of graduation.
Student Entitled to an Individual Education Plan	<ul style="list-style-type: none"> • A student for whom an Individual Education Plan (IEP) must be designed under the Individual Education Plan order, Ministerial Order 638/95.

District - Rationales for Classes with More Than 30 Students

048 - Sea to Sky

Source: Class size data collection (as of September 30) from standard BC public schools.

Under the *School Act* whenever a class in grades 4 to 12 exceeds 30 students, the principal and the superintendent must confirm that in their opinion, the learning conditions in that classroom are appropriate for the students. In addition, the principal must state the reasons or rationale for that class exceeding 30 students. If parents have questions regarding the information in this report, they should contact the school principal.

Ministry Code	School Name	Division/Class	No. of Students	Rationale
04848004	Howe Sound Secondary	LEADERSHIP 10/11/12	31	One of.
04848004	Howe Sound Secondary	JAZZ BAND 10/11/12	54	One of.
04848004	Howe Sound Secondary	MUSICAL THEATRE 10/11/12	77	One of.
04848016	Don Ross Secondary	MUSIC 9 (01)	32	Band format is suited to larger class.
04848016	Don Ross Secondary	SCIENCES 8 (01)	32	Stand alone class.
04848016	Don Ross Secondary	FRANÇAIS LANGUE SECONDE-IMMERSION 8 (01)	32	Stand alone class.
04848016	Don Ross Secondary	SCIENCES HUMAINES 8 (01)	32	Stand alone class.
04848022	Whistler Secondary	LEADERSHIP 9-12	38	Specialty Class-Student Leadership