

Overview of Class Size and Composition in British Columbia Public Schools 2011/12

School District 046 Sunshine Coast

These class size data are current as of September 30, 2011 and have been verified by school districts.

PLEASE NOTE

The Ministry makes small and continuous improvements to the quality of its data. Sometimes these changes result in differences from previously published reports. The data in this report are the most accurate data available at time of publication.

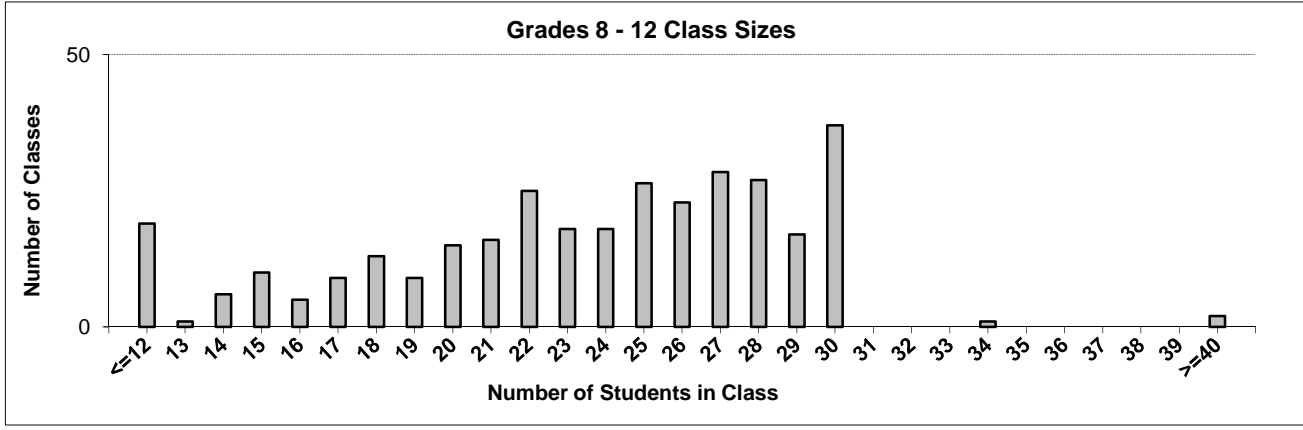
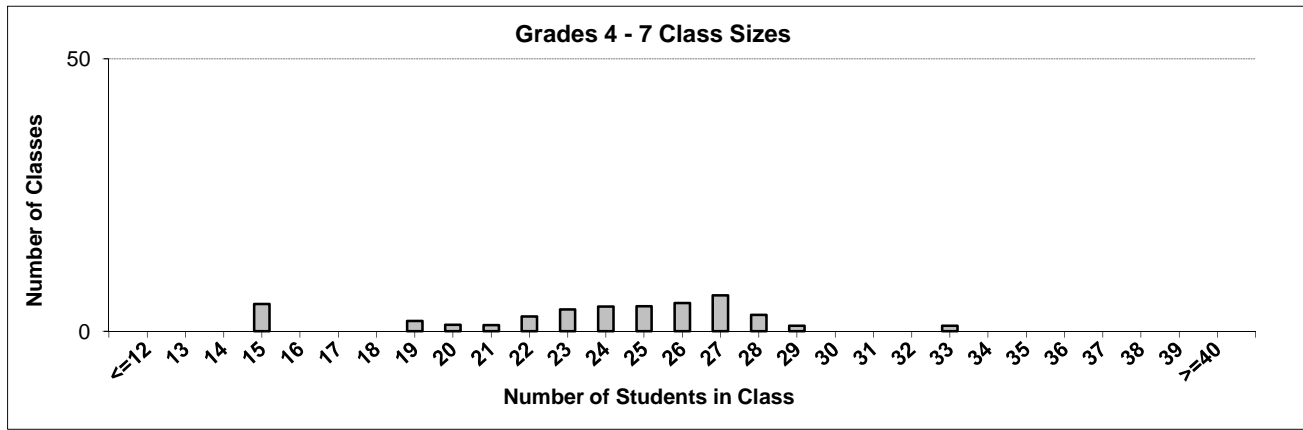
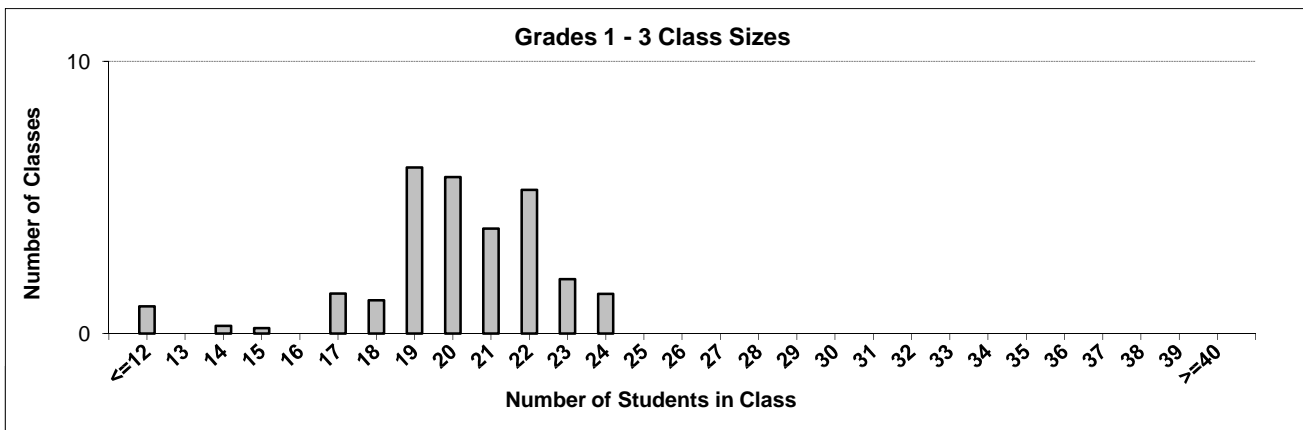
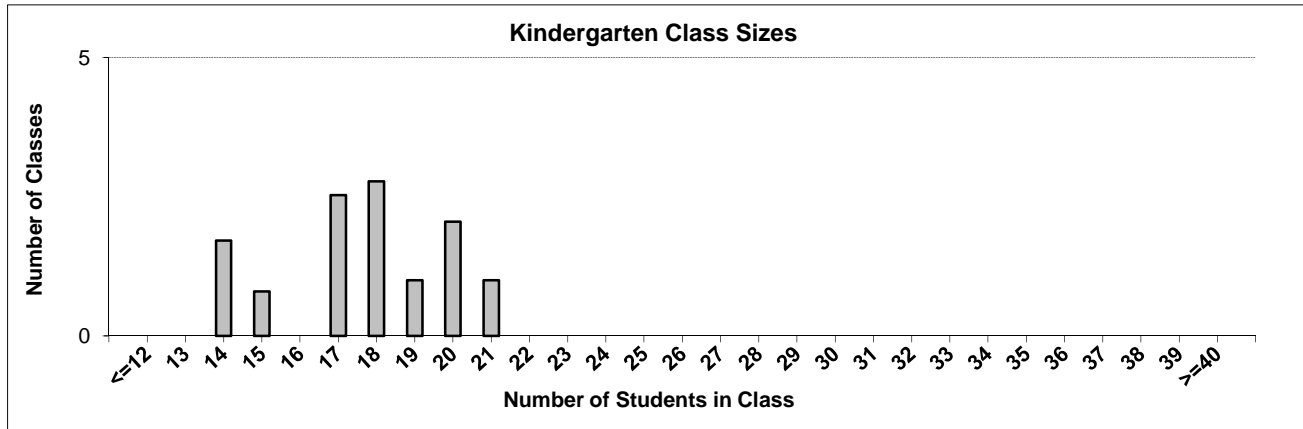
Ministry reports are available at <http://www.bced.gov.bc.ca/reporting/>

Contact the Information Department at educ.reportingunit@gov.bc.ca

District Class Sizes

046 Sunshine Coast

Source: Class size data collection (as of September 30) from standard BC public schools.



District - Average Class Size

046 Sunshine Coast

Source: Class size data collection (as of September 30) from standard BC public schools.

District - Average Class Size	Kindergarten	Grade 1 - 3	Grade 4 - 7	Grade 8 - 12
	17.7	20.1	23.7	23.3

Province - Average Class Size	Kindergarten	Grade 1 - 3	Grade 4 - 7	Grade 8 - 12
	18.5	20.6	25.9	25.0

Number of Reported Classes with Assigned Education Assistants	170
---	-----

Number of Reported Schools in District	12
--	----

Number of Reported Classes in District	408
--	-----

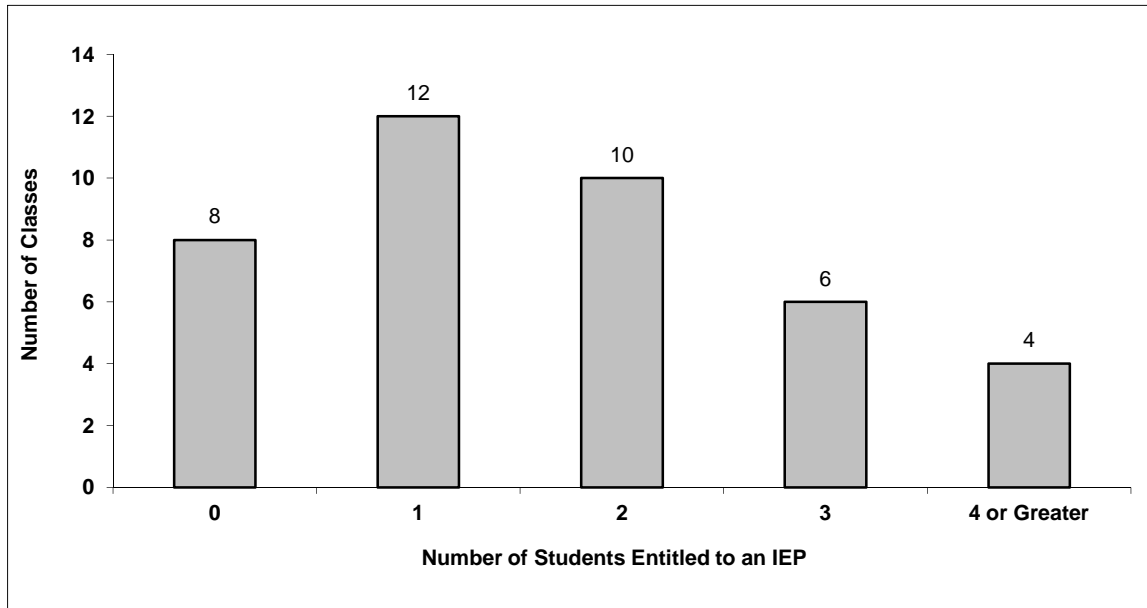
Number of Reported Classes in District with more than 30 Students	4
---	---

District - Students Entitled to an Individual Education Plan (IEP)

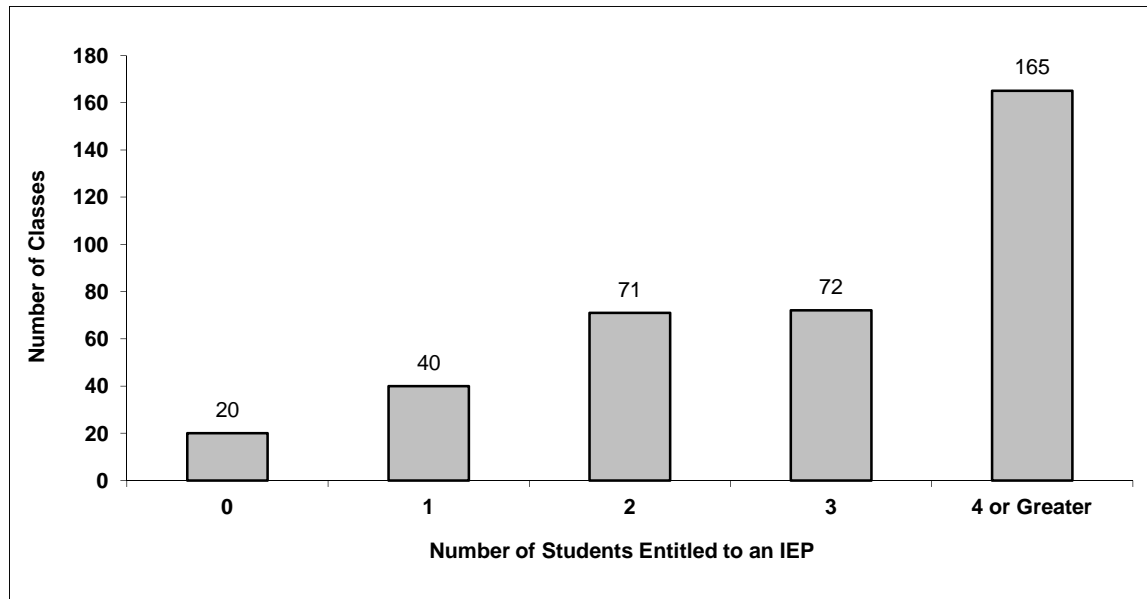
046 Sunshine Coast

Source: Class size data collection (as of September 30) from standard BC public schools.

Grades K-3 - Number of Classes in District with 'X' Number of Students Entitled to an IEP



Grades 4-12 - Number of Classes in District with 'X' Number of Students Entitled to an IEP

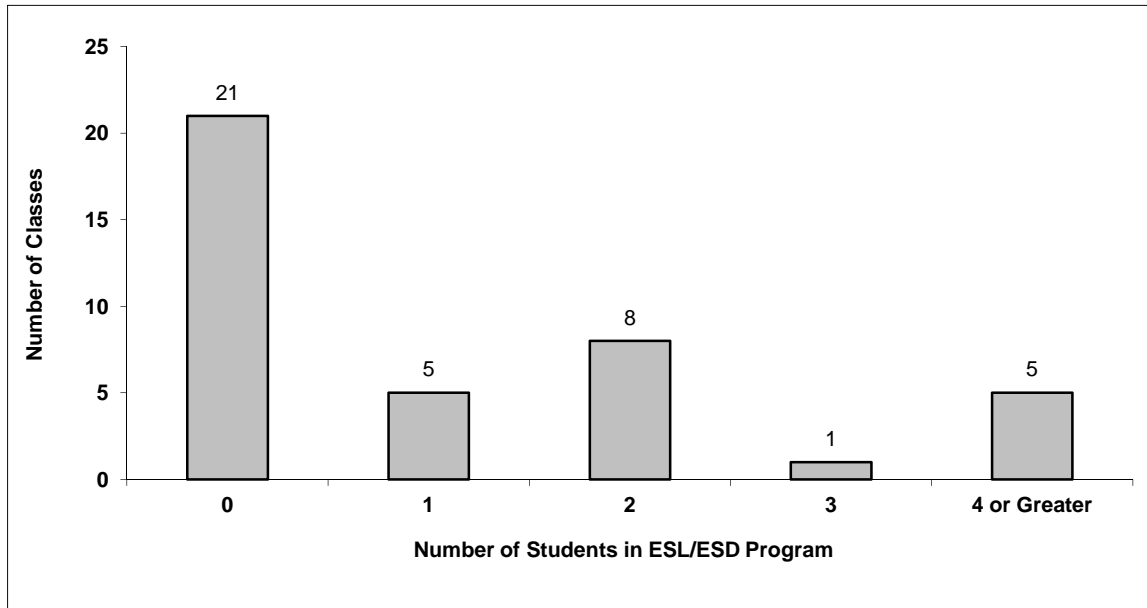


District - Students in English as a Second Language/Dialect (ESL/ESD) Program

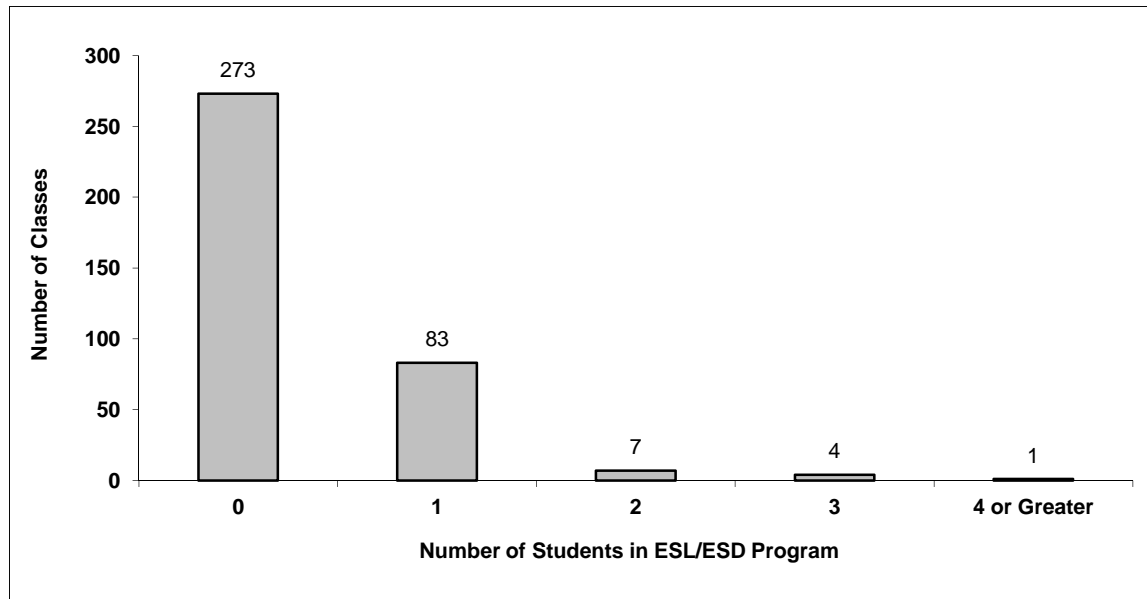
046 Sunshine Coast

Source: Class size data collection (as of September 30) from standard BC public schools.

Grades K-3 - Number of Classes in District with 'X' Number of Students in ESL/ESD Program



Grades 4-12 - Number of Classes in District with 'X' Number of Students in ESL/ESD Program



046 Sunshine Coast - Average Class Size by School

Source: Class size data collection (as of September 30) from standard BC public schools.

Ministry Code	School Name	Kindergarten	Grade 1 - 3	Grade 4 - 7	Grade 8 - 12
04646018	Cedar Grove Elementary	19.2	19.8	23.8	-
04646017	Chatelech Secondary	-	-	-	24.4
04646011	Davis Bay Elementary	18.0	13.2	15.0	-
04646008	Elphinstone Secondary	-	-	-	24.4
04646001	Gibsons Elementary	20.0	21.2	27.0	-
04646013	Halfmoon Bay Elementary	17.0	19.3	25.4	-
04646022	Kinnikinnick Elementary	19.3	19.7	22.8	-
04646015	Langdale Elementary	14.0	18.7	19.5	-
04646007	Madeira Park Elementary	15.0	20.9	24.3	-
04646012	Pender Harbour Elem-Secondary	-	-	19.0	16.8
04646009	Roberts Creek Elementary	17.0	21.1	26.0	-
04646016	West Sechelt Elementary	16.0	22.0	26.6	-

Glossary

Term	Definition / Notes
English as a Second Language/Dialect (ESL/ESD) Program	<ul style="list-style-type: none"> • A program offered to students whose primary language(s) is/are other than English, and who may require additional services.
Grade	<ul style="list-style-type: none"> • The assigned grade of a student on September 30.
KH	<ul style="list-style-type: none"> • Kindergarten half-time
KF	<ul style="list-style-type: none"> • Kindergarten full-time
Number of Students	<ul style="list-style-type: none"> • Student population is calculated by headcount.
Student	<ul style="list-style-type: none"> • A person enrolled in a BC school. Student populations are calculated by headcount. Students include all adult and school-aged persons who are working toward a certificate of graduation.
Student Entitled to an Individual Education Plan	<ul style="list-style-type: none"> • A student for whom an Individual Education Plan (IEP) must be designed under the Individual Education Plan order, Ministerial Order 638/95.

District - Rationales for Classes with More Than 30 Students

046 - Sunshine Coast

Source: Class size data collection (as of September 30) from standard BC public schools.

Under the *School Act* whenever a class in grades 4 to 12 exceeds 30 students, the principal and the superintendent must confirm that in their opinion, the learning conditions in that classroom are appropriate for the students. In addition, the principal must state the reasons or rationale for that class exceeding 30 students. If parents have questions regarding the information in this report, they should contact the school principal.

Ministry Code	School Name	Division/Class	No. of Students	Rationale
04646008	Elphinstone Secondary	ART FOUNDATIONS 11 (04), BA INTERPERSONAL SKILLS 10B (04), BA INTERPERSONAL SKIL	34	6 students are working on independent study
04646008	Elphinstone Secondary	INSTRUMENTAL MUSIC 11: CONCERT BAND (01), INSTRUMENTAL MUSIC 12: CONCERT BAND (0	51	concert band requires a large class size to incorporate the full range of musical instruments required
04646016	West Sechelt Elementary	Grade 4/5 Music	33	This was teachers solution to a band problem. Teacher agrees with the class size.
04646017	Chatelech Secondary	INSTRUMENTAL MUSIC 11: CONCERT BAND (01), INSTRUMENTAL MUSIC 11: JAZZ BAND (01),	44	concert band requires a large class size to incorporate the full range of musical instruments required