

# Overview of Class Size and Composition in British Columbia Public Schools 2011/12

## School District 040 New Westminster

These class size data are current as of September 30, 2011 and have been verified by school districts.

---

### **PLEASE NOTE**

The Ministry makes small and continuous improvements to the quality of its data. Sometimes these changes result in differences from previously published reports. The data in this report are the most accurate data available at time of publication.

Ministry reports are available at <http://www.bced.gov.bc.ca/reporting/>

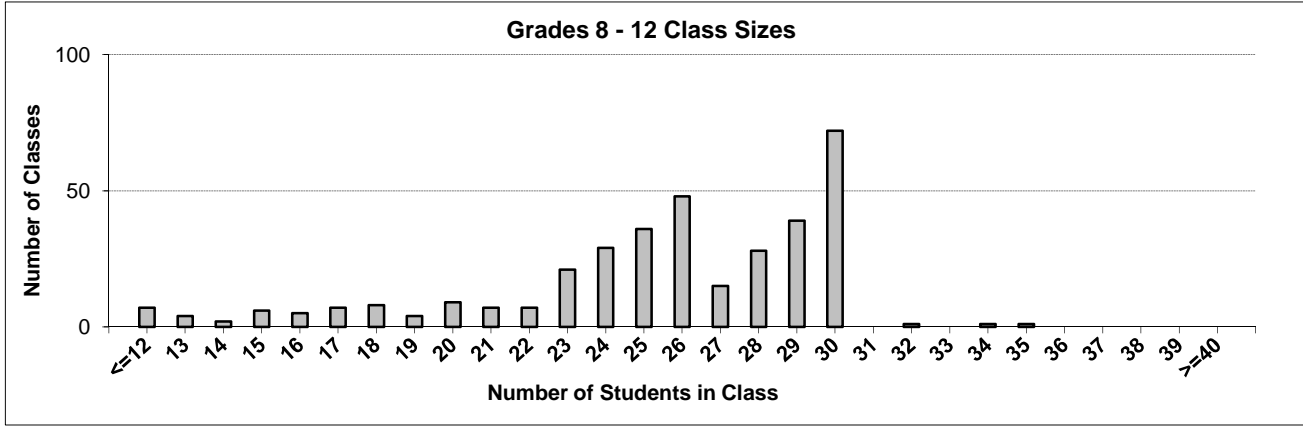
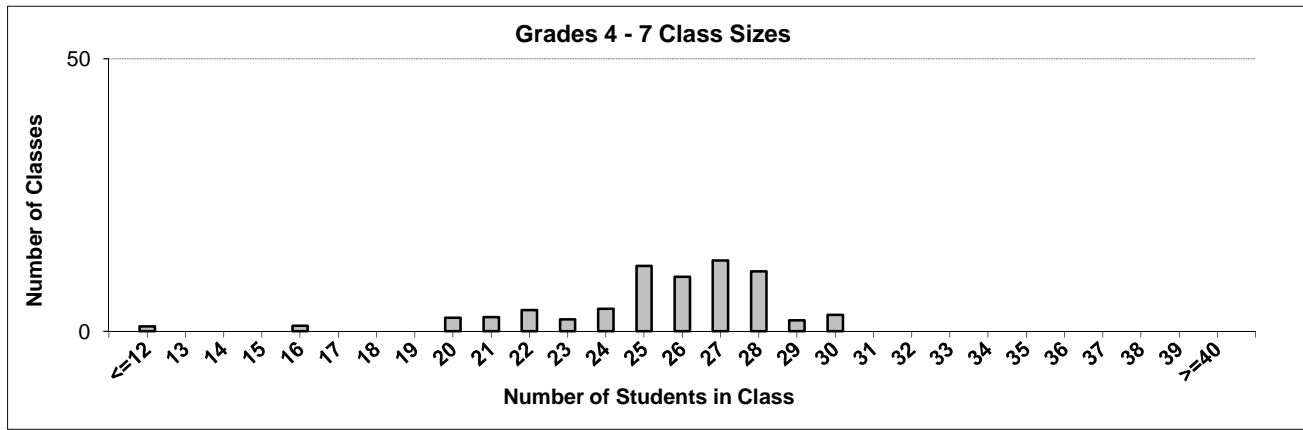
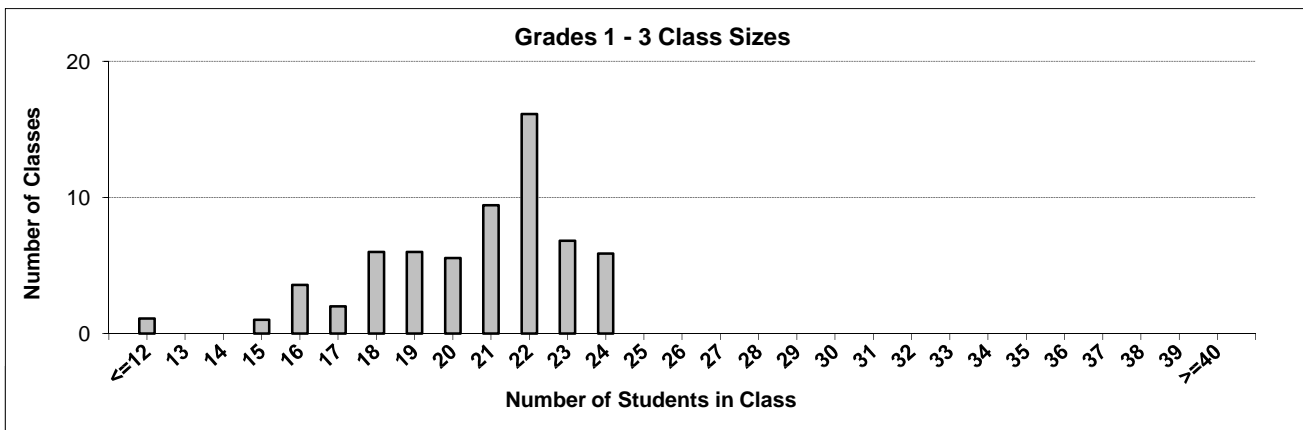
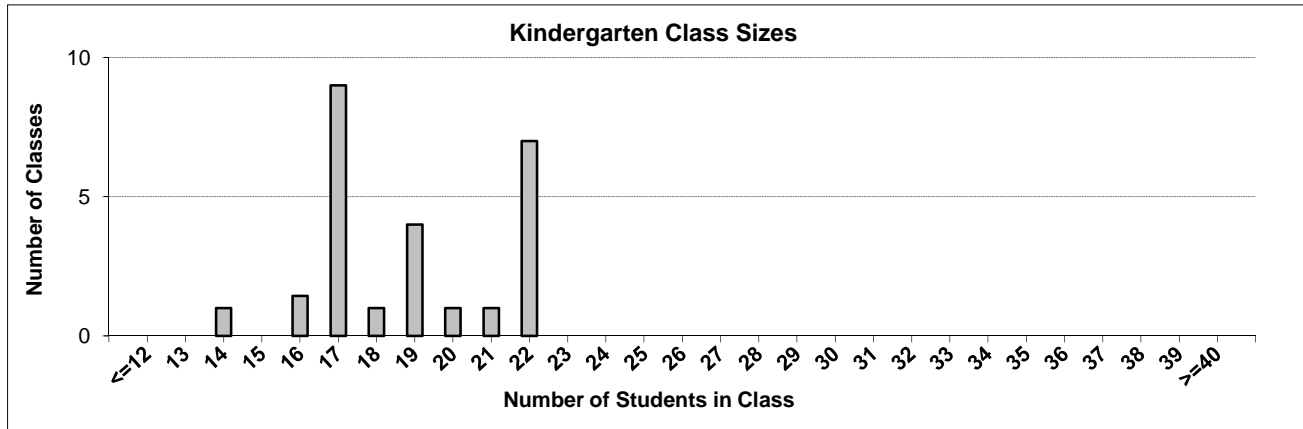
Contact the Information Department at [educ.reportingunit@gov.bc.ca](mailto:educ.reportingunit@gov.bc.ca)

---

# District Class Sizes

## 040 New Westminster

Source: Class size data collection (as of September 30) from standard BC public schools.



---

## District - Average Class Size

---

### 040 New Westminster

Source: Class size data collection (as of September 30) from standard BC public schools.

District - Average Class Size	Kindergarten	Grade 1 - 3	Grade 4 - 7	Grade 8 - 12
	18.8	20.5	25.4	25.3

Province - Average Class Size	Kindergarten	Grade 1 - 3	Grade 4 - 7	Grade 8 - 12
	18.5	20.6	25.9	25.0

Number of Reported Classes with Assigned Education Assistants	90
---	----

Number of Reported Schools in District	12
--	----

Number of Reported Classes in District	514
--	-----

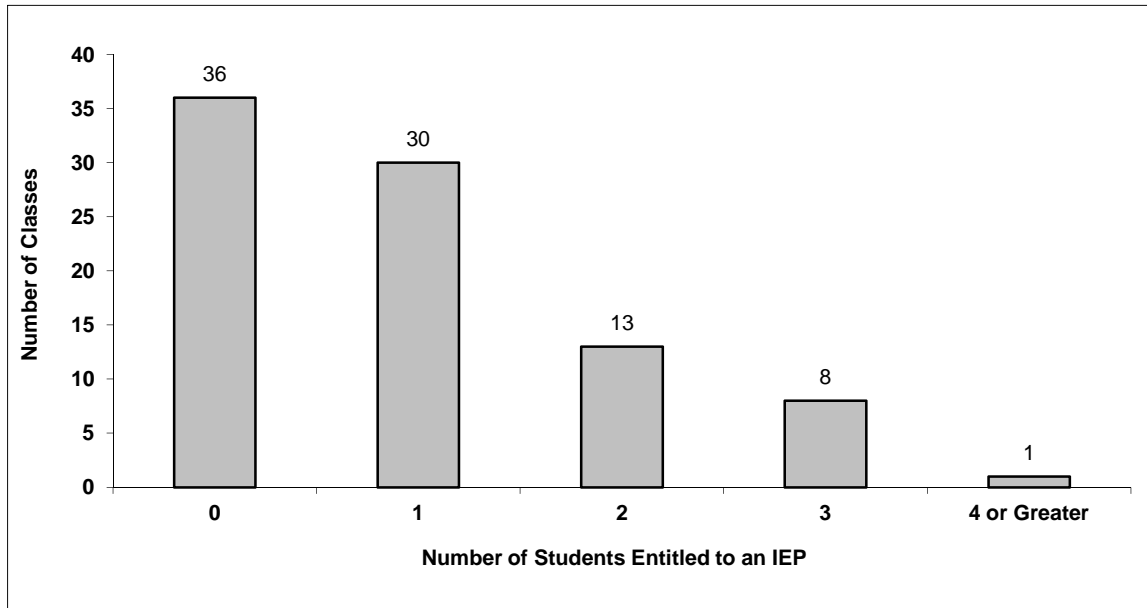
Number of Reported Classes in District with more than 30 Students	3
---	---

# District - Students Entitled to an Individual Education Plan (IEP)

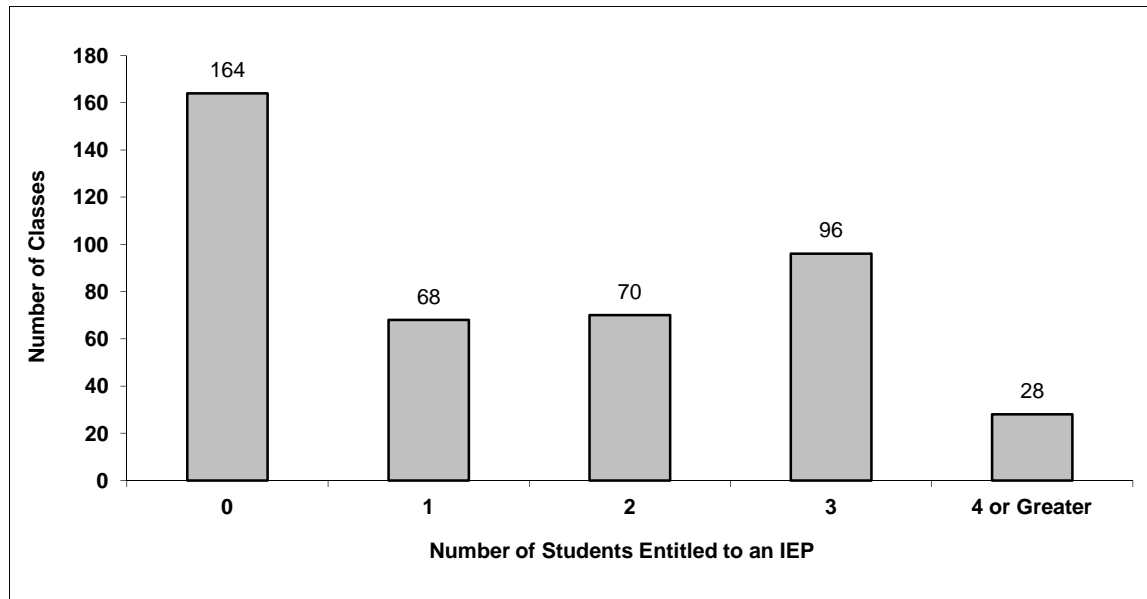
## 040 New Westminster

Source: Class size data collection (as of September 30) from standard BC public schools.

Grades K-3 - Number of Classes in District with 'X' Number of Students Entitled to an IEP



Grades 4-12 - Number of Classes in District with 'X' Number of Students Entitled to an IEP

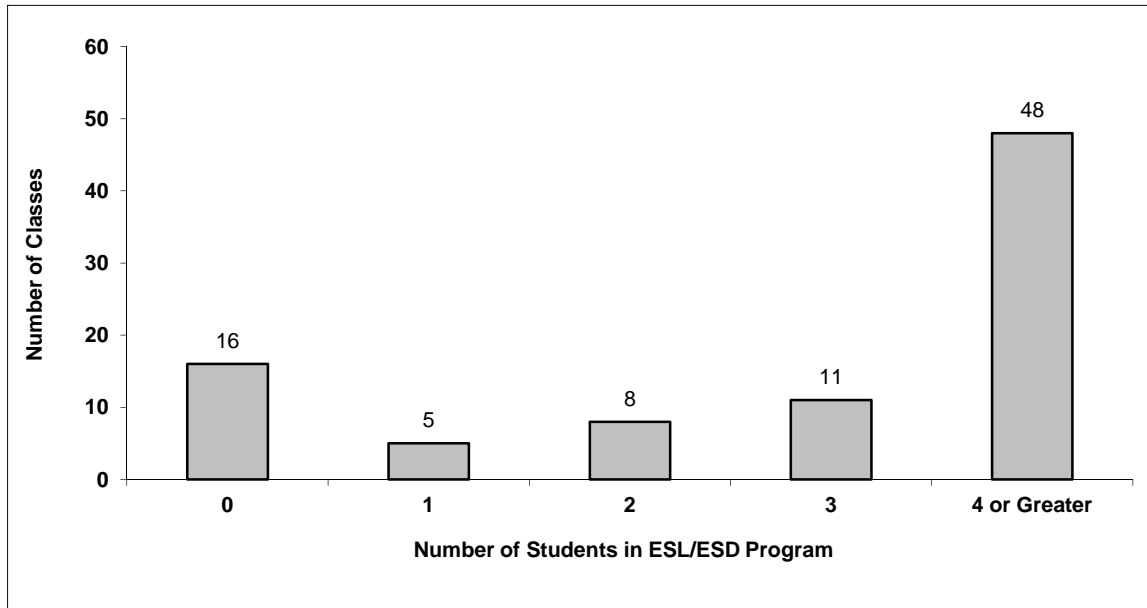


# District - Students in English as a Second Language/Dialect (ESL/ESD) Program

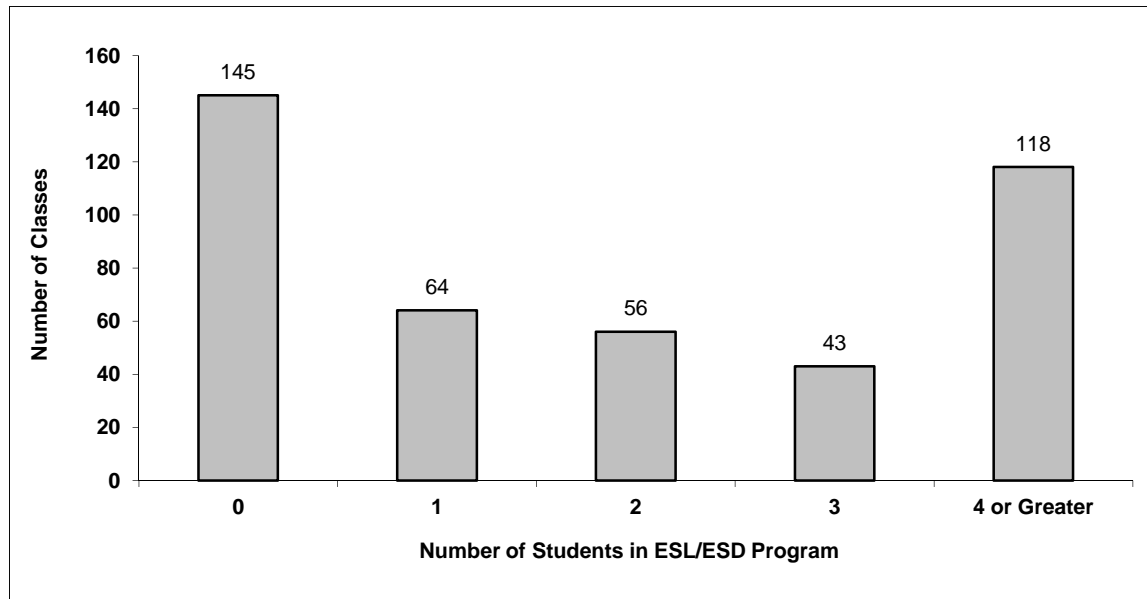
## 040 New Westminster

Source: Class size data collection (as of September 30) from standard BC public schools.

Grades K-3 - Number of Classes in District with 'X' Number of Students in ESL/ESD Program



Grades 4-12 - Number of Classes in District with 'X' Number of Students in ESL/ESD Program



## 040 New Westminster - Average Class Size by School

Source: Class size data collection (as of September 30) from standard BC public schools.

Ministry Code	School Name	Kindergarten	Grade 1 - 3	Grade 4 - 7	Grade 8 - 12
04040010	Connaught Heights Elementary	18.0	17.2	25.5	-
04040013	Ecole Glenbrook Middle School	-	-	26.9	25.0
04040009	F W Howay Elementary	16.5	20.0	20.0	-
04040002	Herbert Spencer Elementary	19.3	22.7	25.3	-
04040011	Hume Park School	16.0	15.1	10.0	-
04040007	John Robson Elementary	20.5	20.8	26.3	-
04040001	Lord Kelvin Elementary	17.0	18.9	27.0	-
04040004	Lord Tweedsmuir Elementary	22.0	20.8	25.2	-
04040008	New Westminster Secondary	-	-	-	25.3
04040012	Queen Elizabeth Elementary	17.0	21.0	23.3	-
04040014	Queensborough Middle School	-	-	23.8	25.0
04040003	Richard McBride Elementary	19.7	20.3	26.0	-

## Glossary

Term	Definition / Notes
<b>English as a Second Language/Dialect (ESL/ESD) Program</b>	<ul style="list-style-type: none"> <li>• A program offered to students whose primary language(s) is/are other than English, and who may require additional services.</li> </ul>
<b>Grade</b>	<ul style="list-style-type: none"> <li>• The assigned grade of a student on September 30.</li> </ul>
<b>KH</b>	<ul style="list-style-type: none"> <li>• Kindergarten half-time</li> </ul>
<b>KF</b>	<ul style="list-style-type: none"> <li>• Kindergarten full-time</li> </ul>
<b>Number of Students</b>	<ul style="list-style-type: none"> <li>• Student population is calculated by headcount.</li> </ul>
<b>Student</b>	<ul style="list-style-type: none"> <li>• A person enrolled in a BC school. Student populations are calculated by headcount. Students include all adult and school-aged persons who are working toward a certificate of graduation.</li> </ul>
<b>Student Entitled to an Individual Education Plan</b>	<ul style="list-style-type: none"> <li>• A student for whom an Individual Education Plan (IEP) must be designed under the Individual Education Plan order, Ministerial Order 638/95.</li> </ul>



---

## District - Rationales for Classes with More Than 30 Students

---

### 040 - New Westminster

Source: Class size data collection (as of September 30) from standard BC public schools.

Under the *School Act* whenever a class in grades 4 to 12 exceeds 30 students, the principal and the superintendent must confirm that in their opinion, the learning conditions in that classroom are appropriate for the students. In addition, the principal must state the reasons or rationale for that class exceeding 30 students. If parents have questions regarding the information in this report, they should contact the school principal.

Ministry Code	School Name	Division/Class	No. of Students	Rationale
04040008	New Westminster Secondary	IBCAS12	34	No
04040008	New Westminster Secondary	IMJB9/IMJB 10/IMJB11/IMJB 12	35	No
04040008	New Westminster Secondary	IBTK12	32	No