

# Overview of Class Size and Composition in British Columbia Public Schools 2011/12

## School District 038 Richmond

These class size data are current as of September 30, 2011 and have been verified by school districts.

---

### **PLEASE NOTE**

The Ministry makes small and continuous improvements to the quality of its data. Sometimes these changes result in differences from previously published reports. The data in this report are the most accurate data available at time of publication.

Ministry reports are available at <http://www.bced.gov.bc.ca/reporting/>

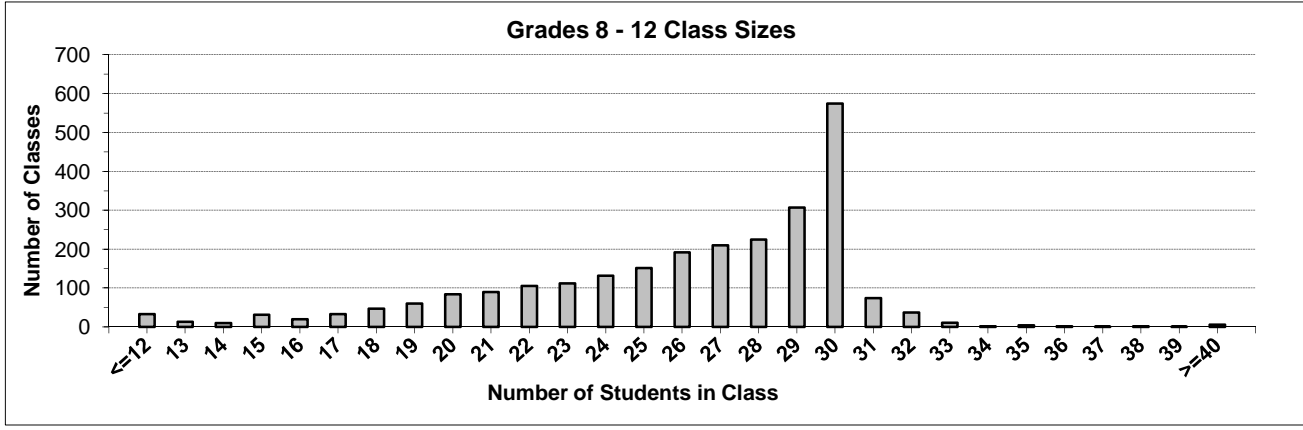
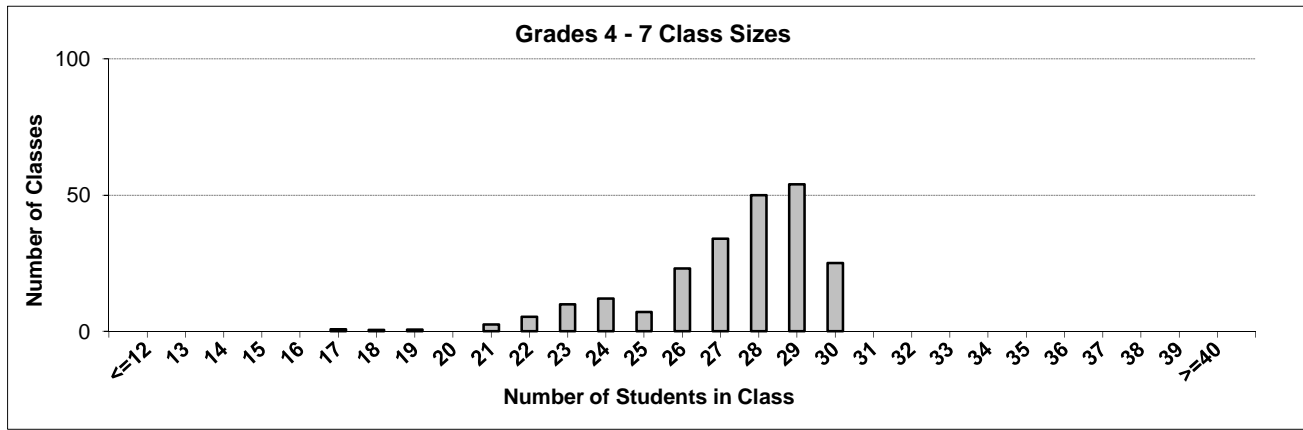
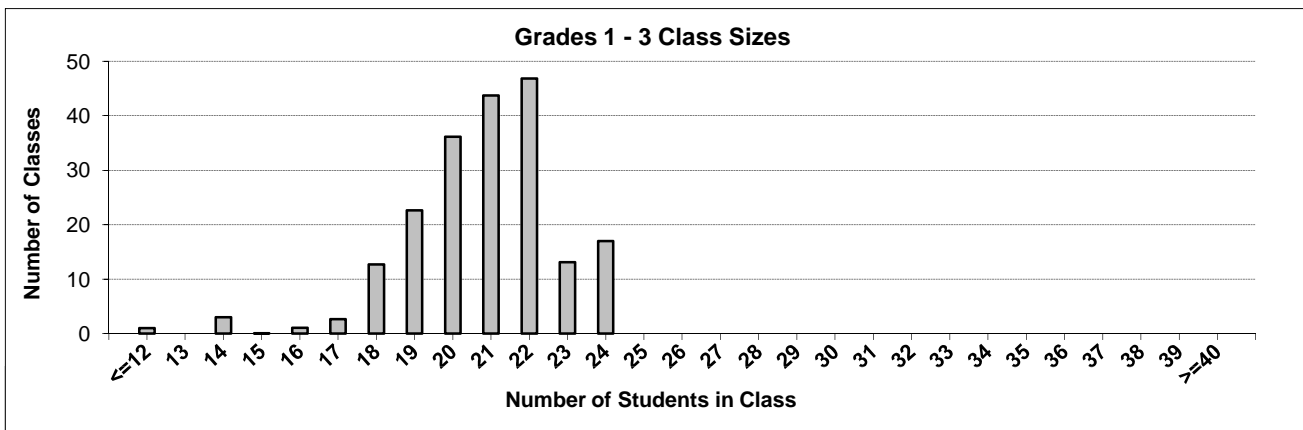
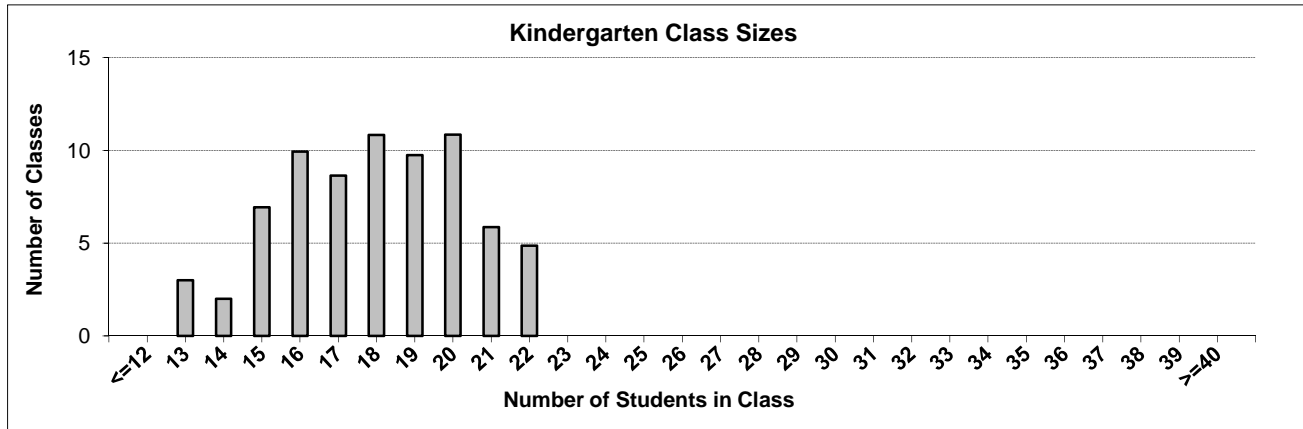
Contact the Information Department at [educ.reportingunit@gov.bc.ca](mailto:educ.reportingunit@gov.bc.ca)

---

# District Class Sizes

## 038 Richmond

Source: Class size data collection (as of September 30) from standard BC public schools.



---

## District - Average Class Size

---

### 038 Richmond

Source: Class size data collection (as of September 30) from standard BC public schools.

District - Average Class Size	Kindergarten	Grade 1 - 3	Grade 4 - 7	Grade 8 - 12
	17.9	20.7	27.3	26.1

Province - Average Class Size	Kindergarten	Grade 1 - 3	Grade 4 - 7	Grade 8 - 12
	18.5	20.6	25.9	25.0

Number of Reported Classes with Assigned Education Assistants	722
---	-----

Number of Reported Schools in District	48
--	----

Number of Reported Classes in District	3,066
--	-------

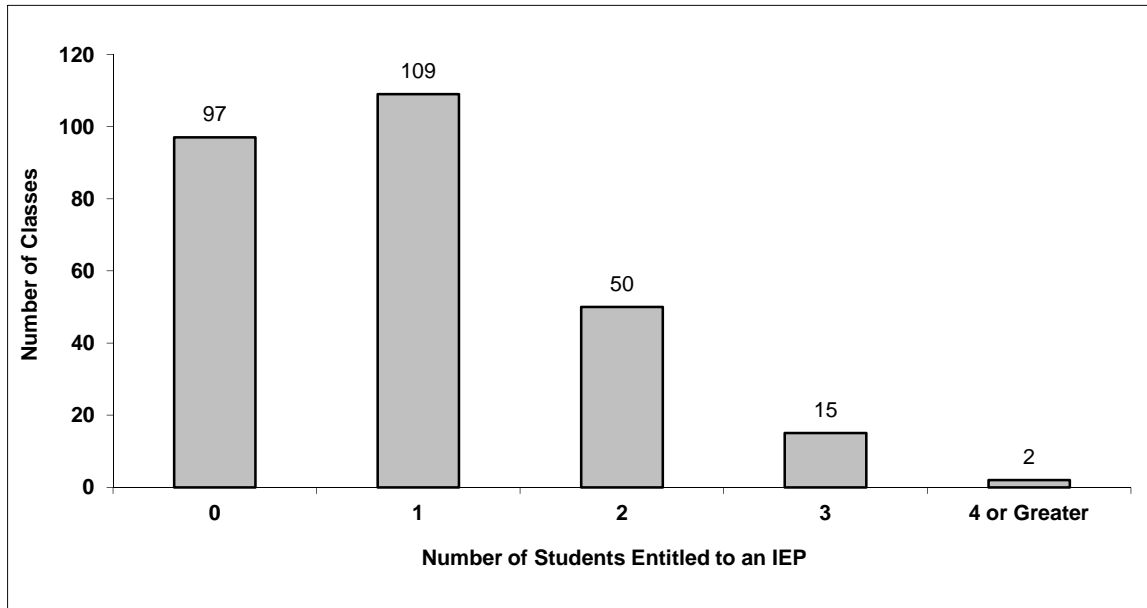
Number of Reported Classes in District with more than 30 Students	140
---	-----

# District - Students Entitled to an Individual Education Plan (IEP)

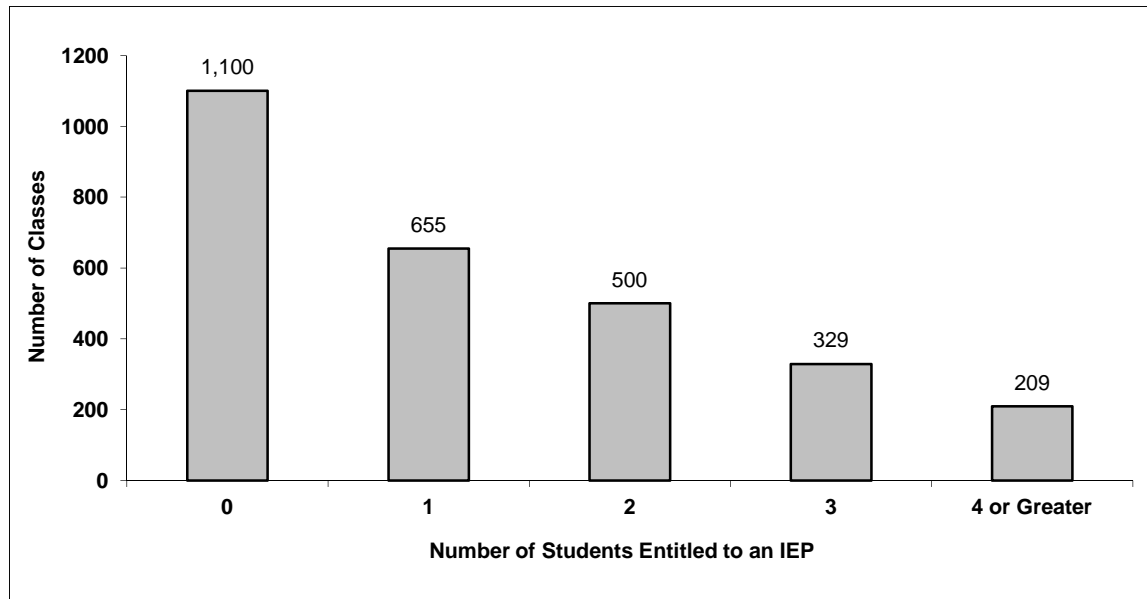
## 038 Richmond

Source: Class size data collection (as of September 30) from standard BC public schools.

### Grades K-3 - Number of Classes in District with 'X' Number of Students Entitled to an IEP



### Grades 4-12 - Number of Classes in District with 'X' Number of Students Entitled to an IEP

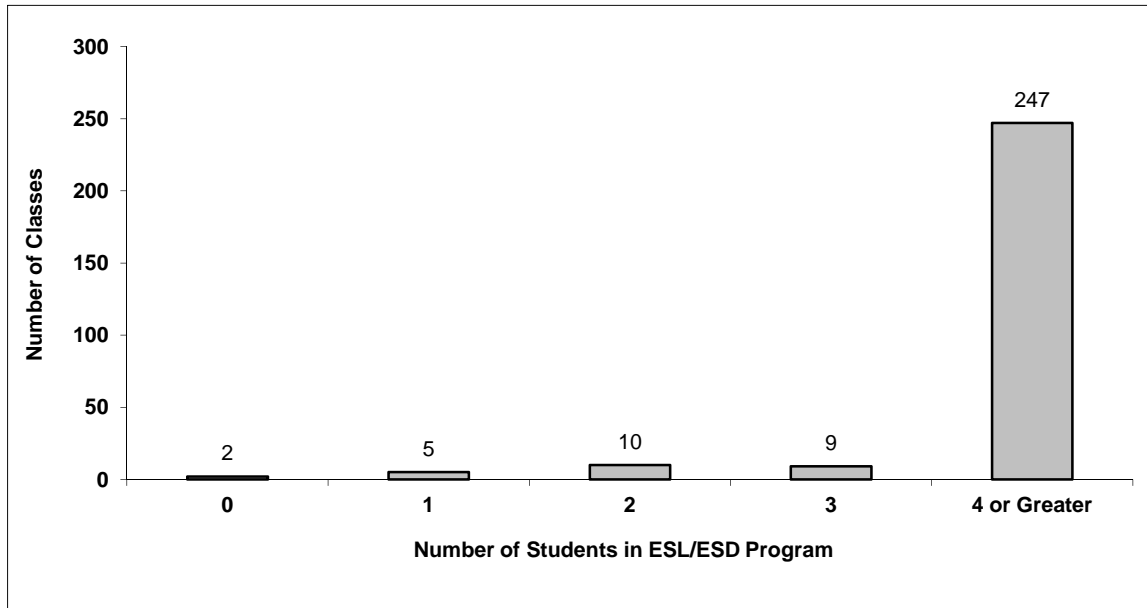


# District - Students in English as a Second Language/Dialect (ESL/ESD) Program

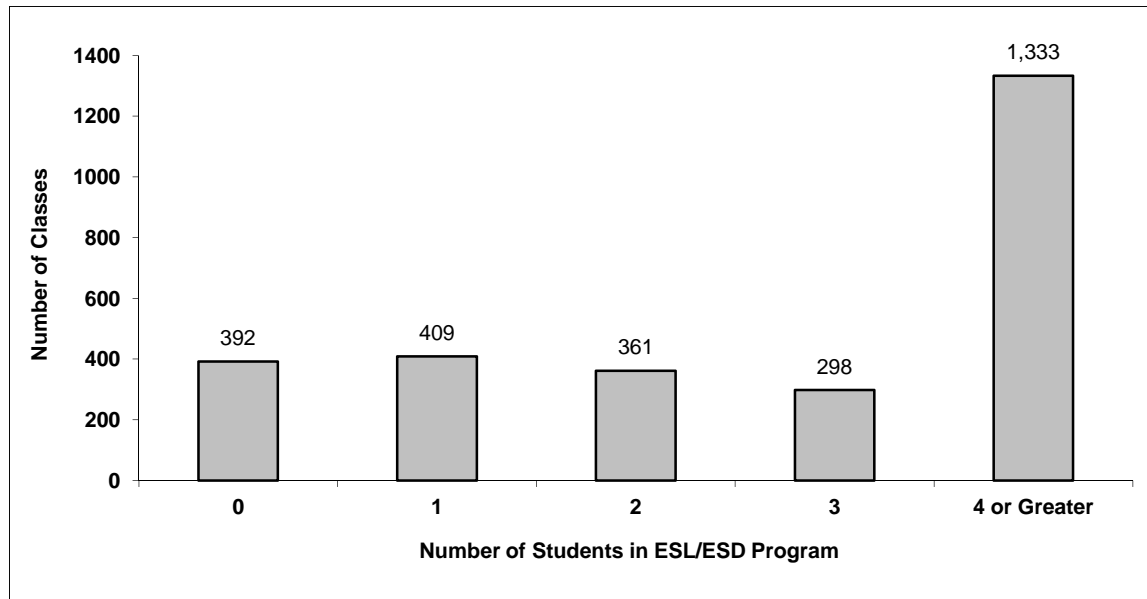
## 038 Richmond

Source: Class size data collection (as of September 30) from standard BC public schools.

Grades K-3 - Number of Classes in District with 'X' Number of Students in ESL/ESD Program



Grades 4-12 - Number of Classes in District with 'X' Number of Students in ESL/ESD Program



## 038 Richmond - Average Class Size by School

Source: Class size data collection (as of September 30) from standard BC public schools.

Ministry Code	School Name	Kindergarten	Grade 1 - 3	Grade 4 - 7	Grade 8 - 12
03838064	A.R. MacNeill Secondary	-	-	-	25.8
03838020	Alfred B Dixon Elementary	17.6	21.5	26.1	-
03838060	Archibald Blair Elementary	18.7	22.0	27.4	-
03838014	Blundell Elementary	13.0	19.7	26.3	-
03838058	Cambie Secondary	-	-	-	25.9
03838029	Daniel Woodward Elementary	15.0	19.7	23.7	-
03838030	Donald E McKay Elementary	19.0	17.0	26.0	-
03838008	Garden City Elementary	17.5	20.0	24.4	-
03838057	General Currie Elementary	17.3	20.5	28.5	-
03838006	Hamilton Elementary	15.7	21.1	27.6	-
03838059	Henry Anderson Elementary	21.4	21.0	26.9	-
03838037	Howard De Beck Elementary	18.0	20.9	27.3	-
03838031	Hugh Boyd Secondary	-	-	-	25.3
03838033	Hugh McRoberts Secondary	-	-	-	26.9
03838042	J N Burnett Secondary	-	-	-	26.5
03838025	James Gilmore Elementary	16.0	21.8	27.1	-
03838040	James McKinney Elementary	16.5	21.2	25.6	-
03838013	James Thompson Elementary	19.5	21.0	28.0	-
03838016	James Whiteside Elementary	18.5	18.3	27.9	-
03838056	Jessie Wowk Elementary	20.0	23.7	29.0	-
03838052	John G Diefenbaker Elementary	18.9	22.0	27.9	-
03838021	John T Errington Elementary	20.0	21.8	28.3	-
03838055	Kathleen McNeely Elementary	20.0	19.6	27.4	-
03838048	Kingswood Elementary	20.0	20.8	27.6	-
03838005	Lord Byng Elementary	19.5	21.4	26.4	-
03838041	Manoah Steves Elementary	20.0	19.6	26.0	-
03838046	Maple Lane Elementary	13.0	21.0	27.3	-
03838044	Matthew McNair Secondary	-	-	-	26.1
03838001	Mitchell Elementary	17.3	20.0	27.7	-
03838047	Quilchena Elementary	18.0	19.0	26.7	-
03838024	R C Palmer Secondary	-	-	-	24.5
03838009	R M Grauer Elementary	18.9	21.8	26.7	-
03838054	R. C. Talmey Elementary	21.0	18.7	25.9	-
03838065	Richmond Secondary	-	-	-	26.3
03838062	Robert Alexander McMath Secondary	-	-	-	26.4
03838017	Robert J Tait Elementary	19.9	20.7	26.7	-
03838035	Samuel Brighthouse Elementary	16.5	20.9	27.8	-
03838010	Sea Island Elementary	17.0	17.6	-	-
03838063	Spul'u'kwuks Elementary	19.0	21.1	27.3	-
03838045	Steveston-London Secondary	-	-	-	26.4
03838019	Thomas Kidd Elementary	18.8	21.3	30.0	-
03838053	Tomekichi Homma Elementary	18.0	21.1	26.3	-
03838023	Tomsett Elementary	17.0	19.9	27.4	-
03838027	W D Ferris Elementary	16.0	20.7	28.5	-
03838026	Walter Lee Elementary	19.0	22.3	26.9	-
03838049	Westwind Elementary	17.0	22.1	29.4	-
03838043	William Bridge Elementary	20.0	21.4	27.4	-
03838015	William Cook Elementary	15.7	20.3	28.4	-

## Glossary

Term	Definition / Notes
<b>English as a Second Language/Dialect (ESL/ESD) Program</b>	<ul style="list-style-type: none"> <li>• A program offered to students whose primary language(s) is/are other than English, and who may require additional services.</li> </ul>
<b>Grade</b>	<ul style="list-style-type: none"> <li>• The assigned grade of a student on September 30.</li> </ul>
<b>KH</b>	<ul style="list-style-type: none"> <li>• Kindergarten half-time</li> </ul>
<b>KF</b>	<ul style="list-style-type: none"> <li>• Kindergarten full-time</li> </ul>
<b>Number of Students</b>	<ul style="list-style-type: none"> <li>• Student population is calculated by headcount.</li> </ul>
<b>Student</b>	<ul style="list-style-type: none"> <li>• A person enrolled in a BC school. Student populations are calculated by headcount. Students include all adult and school-aged persons who are working toward a certificate of graduation.</li> </ul>
<b>Student Entitled to an Individual Education Plan</b>	<ul style="list-style-type: none"> <li>• A student for whom an Individual Education Plan (IEP) must be designed under the Individual Education Plan order, Ministerial Order 638/95.</li> </ul>



## District - Rationales for Classes with More Than 30 Students

### 038 - Richmond

Source: Class size data collection (as of September 30) from standard BC public schools.

Under the *School Act* whenever a class in grades 4 to 12 exceeds 30 students, the principal and the superintendent must confirm that in their opinion, the learning conditions in that classroom are appropriate for the students. In addition, the principal must state the reasons or rationale for that class exceeding 30 students. If parents have questions regarding the information in this report, they should contact the school principal.

Ministry Code	School Name	Division/Class	No. of Students	Rationale
03838024	R C Palmer Secondary	INSTRUMENTAL MUSIC 11: JAZZ BAND (01), INSTRUMENTAL MUSIC 12: JAZZ BAND (01), MU	35	Class is made up of motivated, like minded, students. Limited enrolment in this area has resulted in the a one large section.
03838031	Hugh Boyd Secondary	INSTRUMENTAL MUSIC 11: JAZZ BAND (01), INSTRUMENTAL MUSIC 12: JAZZ BAND (01), MU	35	Meets needs of students with like-minded motivated students. Singleton course.
03838031	Hugh Boyd Secondary	PHYSICS 12 (01)	34	Singleton course. Front loading based on past trends re: attrition over time.
03838031	Hugh Boyd Secondary	SOCIAL STUDIES 10 (02)	33	Awkward grade groups. Tight timetable.
03838031	Hugh Boyd Secondary	SOCIAL STUDIES 11 (05)	33	Course required for graduation. Awkward grade groups.
03838031	Hugh Boyd Secondary	CHEMISTRY 11 (01)	31	Course required for graduation or post-secondary. Front loading based on past trends re: attrition over time.
03838031	Hugh Boyd Secondary	SOCIAL STUDIES 10 (04)	31	Course required for graduation. Awkward grade groups. Limited number of sections.
03838031	Hugh Boyd Secondary	CHEMISTRY 11 (03)	31	Course required for graduation or post-secondary. Front loading based on past trends re: attrition over time.
03838031	Hugh Boyd Secondary	PHYSICAL EDUCATION 8 (01)	31	Awkward grade groups. Tight timetable.
03838031	Hugh Boyd Secondary	BIOLOGY 12 (02)	32	Meets needs of students with like-minded motivated students. Course required for Post-Secondary. Singleton course.
03838033	Hugh McRoberts Secondary	INSTRUMENTAL MUSIC 11: CONCERT BAND (01), INSTRUMENTAL MUSIC 12: CONCERT BAND (0)	38	Supports and enhances band program
03838033	Hugh McRoberts Secondary	FRENCH 10 (02), FRENCH 9 (02)	32	Awkward grade groups, tight timetable (inability to increase sections)
03838033	Hugh McRoberts Secondary	PHYSICAL EDUCATION 9 (02)	33	Awkward grade groups, tight timetable (inability to increase sections)
03838033	Hugh McRoberts Secondary	CHORAL MUSIC 11: CONCERT CHOIR (01), CHORAL MUSIC 11: VOCAL JAZZ (01), CHORAL MU	35	Supports and enhances choral music program

## District - Rationales for Classes with More Than 30 Students

### 038 - Richmond

Source: Class size data collection (as of September 30) from standard BC public schools.

Under the *School Act* whenever a class in grades 4 to 12 exceeds 30 students, the principal and the superintendent must confirm that in their opinion, the learning conditions in that classroom are appropriate for the students. In addition, the principal must state the reasons or rationale for that class exceeding 30 students. If parents have questions regarding the information in this report, they should contact the school principal.

Ministry Code	School Name	Division/Class	No. of Students	Rationale
03838033	Hugh McRoberts Secondary	ENGLISH LANGUAGE ARTS 9 (01)	31	Awkward grade groups, tight timetable (inability to increase sections)
03838033	Hugh McRoberts Secondary	ENGLISH LANGUAGE ARTS 9 (04)	32	Awkward grade groups, tight timetable (inability to increase sections)
03838033	Hugh McRoberts Secondary	PLANNING 10 (04)	32	Awkward grade groups, Course required for graduation, tight timetable (inability to increase sections)
03838033	Hugh McRoberts Secondary	ENGLISH LANGUAGE ARTS 9 (03)	32	Awkward grade groups, tight timetable (inability to increase sections)
03838033	Hugh McRoberts Secondary	JAPANESE 10 (01), JAPANESE 11 (01)	31	Awkward grade groups, tight timetable (inability to increase sections)
03838033	Hugh McRoberts Secondary	SCIENCE 9 (01)	31	Awkward grade groups, tight timetable (inability to increase sections)
03838033	Hugh McRoberts Secondary	PHYSICAL EDUCATION 9 (04)	32	Awkward grade groups, tight timetable (inability to increase sections)
03838033	Hugh McRoberts Secondary	PHYSICAL EDUCATION 9 (06)	33	Awkward grade groups, tight timetable (inability to increase sections)
03838033	Hugh McRoberts Secondary	PLANNING 10 (02)	31	Awkward grade groups, Course required for graduation, tight timetable (inability to increase sections)
03838033	Hugh McRoberts Secondary	ENGLISH LANGUAGE ARTS 9 (05)	32	Awkward grade groups, tight timetable (inability to increase sections)
03838033	Hugh McRoberts Secondary	FRENCH 10 (01)	31	Awkward grade groups, , tight timetable (inability to increase sections)
03838033	Hugh McRoberts Secondary	PHYSICAL EDUCATION 9 (05)	32	Awkward grade groups, tight timetable (inability to increase sections)
03838033	Hugh McRoberts Secondary	PLANNING 10 (06)	32	Awkward grade groups, Course required for graduation, tight timetable (inability to increase sections)
03838033	Hugh McRoberts Secondary	DAILY PHYSICAL ACTIVITY 11 (03), PLANNING 10 (03)	32	Awkward grade groups, Course required for graduation, tight timetable (inability to increase sections)

## District - Rationales for Classes with More Than 30 Students

### 038 - Richmond

Source: Class size data collection (as of September 30) from standard BC public schools.

Under the *School Act* whenever a class in grades 4 to 12 exceeds 30 students, the principal and the superintendent must confirm that in their opinion, the learning conditions in that classroom are appropriate for the students. In addition, the principal must state the reasons or rationale for that class exceeding 30 students. If parents have questions regarding the information in this report, they should contact the school principal.

Ministry Code	School Name	Division/Class	No. of Students	Rationale
03838033	Hugh McRoberts Secondary	PHYSICAL EDUCATION 9 (03)	32	Awkward grade groups, tight timetable (inability to increase sections)
03838033	Hugh McRoberts Secondary	ENGLISH LANGUAGE ARTS 8 (01)	31	Awkward grade groups, tight timetable (inability to increase sections)
03838033	Hugh McRoberts Secondary	PHYSICAL EDUCATION 9 (01)	32	Awkward grade groups, tight timetable (inability to increase sections)
03838033	Hugh McRoberts Secondary	MUSIC 8 (01), MUSIC 8 (01)	44	Supports and enhances band program
03838033	Hugh McRoberts Secondary	ENGLISH LANGUAGE ARTS 9 (02)	32	Awkward grade groups, tight timetable (inability to increase sections)
03838033	Hugh McRoberts Secondary	PHYSICAL EDUCATION 8 (05)	31	Awkward grade groups, tight timetable (inability to increase sections)
03838042	J N Burnett Secondary	SPANISH 10 (01)	32	Specialty course, meets needs of students, tight timetable, supports and enhances student program.
03838042	J N Burnett Secondary	DRAMA 8 (02)	31	Specialty course, tight timetable in grade 8, meets needs of like-minded students.
03838042	J N Burnett Secondary	PHYSICAL EDUCATION 10 (01)	31	Course required graduation program and tight timetable.
03838042	J N Burnett Secondary	FOUNDATIONS OF MATH AND PRE-CALCULUS 10 (02)	31	Course required for graduation program, specialty incentive class, tight timetable.
03838042	J N Burnett Secondary	VISUAL ARTS 8 (02)	31	Specialty course, inability to balance elective choices at grade 8 level, tight timetable.
03838042	J N Burnett Secondary	INTRODUCTORY SPANISH 11 (01), SPANISH 9 (01)	32	Specialty course, meets needs of students, tight timetable, supports and enhances program.
03838042	J N Burnett Secondary	JAPANESE 10 (01)	32	Specialty course, meets needs of students, and tight timetable.
03838042	J N Burnett Secondary	AP 2-D DESIGN PORTFOLIO 12 (02), STUDIO ARTS 11: DRAWING AND PAINTING (02), STUD	31	Specialty course, tight timetable, classes combined to accommodate broad range of students.
03838042	J N Burnett Secondary	PRE-CALCULUS 11 (04)	31	Course required for graduation and tight timetable.
03838042	J N Burnett Secondary	INSTRUMENTAL MUSIC 11: CONCERT BAND (02), INSTRUMENTAL MUSIC 12: CONCERT BAND (0	43	Specialty course, supports student programs.

## District - Rationales for Classes with More Than 30 Students

### 038 - Richmond

Source: Class size data collection (as of September 30) from standard BC public schools.

Under the *School Act* whenever a class in grades 4 to 12 exceeds 30 students, the principal and the superintendent must confirm that in their opinion, the learning conditions in that classroom are appropriate for the students. In addition, the principal must state the reasons or rationale for that class exceeding 30 students. If parents have questions regarding the information in this report, they should contact the school principal.

Ministry Code	School Name	Division/Class	No. of Students	Rationale
03838042	J N Burnett Secondary	AP CHEMISTRY 12 (01)	44	Specialty course, teacher request for larger classes because attrition and a singleton elective.
03838042	J N Burnett Secondary	PRE-CALCULUS 11 (02)	31	Course required for graduation and tight timetable.
03838042	J N Burnett Secondary	MATHEMATICS 9 (01)	31	Tight timetable, meets student needs.
03838042	J N Burnett Secondary	FOUNDATIONS OF MATH AND PRE-CALCULUS 10 (01)	32	Course required for graduation program, tight timetable.
03838042	J N Burnett Secondary	SCIENCE 10 (02)	32	Course required for graduation program and tight timetable.
03838044	Matthew McNair Secondary	SCIENCE 8 (44)	31	Specialty course/ singleton - mini school cohort
03838044	Matthew McNair Secondary	FOUNDATIONS OF MATHEMATICS 11 (12)	31	Limited number of sections, tight timetable
03838044	Matthew McNair Secondary	PRINCIPLES OF MATHEMATICS 12 (11)	31	Specialty course - singleton- pre AP math class
03838044	Matthew McNair Secondary	SOCIAL STUDIES 9 (13)	32	Specialty course, singleton - Mini school cohort
03838044	Matthew McNair Secondary	FOUNDATIONS OF MATH AND PRE-CALCULUS 10 (12)	32	Limited number of sections, awkward grade groups
03838044	Matthew McNair Secondary	SOCIAL JUSTICE 12 (11)	31	Limited number of sections/ tight timetable
03838044	Matthew McNair Secondary	FOUNDATIONS OF MATH AND PRE-CALCULUS 10 (11)	31	Limited number of sections, awkward grade groups
03838044	Matthew McNair Secondary	ENGLISH 11 (11)	32	Specialty course/singleton - Mini school cohort
03838044	Matthew McNair Secondary	ENGLISH LANGUAGE ARTS 8 (11)	31	Specialty course / singleton, mini school cohort
03838044	Matthew McNair Secondary	FOUNDATIONS OF MATH AND PRE-CALCULUS 10 (13)	31	Limited number of sections, awkward grade groups
03838044	Matthew McNair Secondary	MUSIC 10: CONCERT BAND (01), MUSIC 9 (01)	38	Numbers appropriate to music groupings for teaching/performing
03838044	Matthew McNair Secondary	PHYSICAL EDUCATION 8 (44)	31	Specialty course singleton - mini school cohort
03838044	Matthew McNair Secondary	ENGLISH 12 (13)	31	Course required for graduation, limited number of sections
03838044	Matthew McNair Secondary	PHYSICAL EDUCATION 9 (14)	31	Tight timetable, minimal adaptations required for most identified students
03838045	Steveston-London Secondary	PHYSICAL EDUCATION 10 (05), PHYSICAL EDUCATION 11 (05), PHYSICAL EDUCATION 12 (0)	33	This is a PE leadership class where students do there work outside of the classroom setting (i.e. essentially non enrolling). It's also a singleton, so there's no alternative sections.

## District - Rationales for Classes with More Than 30 Students

### 038 - Richmond

Source: Class size data collection (as of September 30) from standard BC public schools.

Under the *School Act* whenever a class in grades 4 to 12 exceeds 30 students, the principal and the superintendent must confirm that in their opinion, the learning conditions in that classroom are appropriate for the students. In addition, the principal must state the reasons or rationale for that class exceeding 30 students. If parents have questions regarding the information in this report, they should contact the school principal.

Ministry Code	School Name	Division/Class	No. of Students	Rationale
03838045	Steveston-London Secondary	FOUNDATIONS OF MATH AND PRE-CALCULUS 10 (12)	31	Until Oct. 2 ALL of our math 10 classes were FULL to capacity. Since then a single spot has opened up in one class, all others are still at capacity.
03838045	Steveston-London Secondary	GEOGRAPHY 12 (12)	31	All of the Geography 12 classes this semester are at capacity. There's no room for movement.
03838045	Steveston-London Secondary	LD LOCALLY DEVELOPED 12G (15)	32	This is a non-enrolling ESL 5 support block. The teacher meets periodically with each student individually or in small groups.
03838045	Steveston-London Secondary	MUSIC 8 (11)	44	We have a single block of grade 8 band. The teacher ENCOURAGES as many students as possible to join to ensure enough music students at older grades.
03838045	Steveston-London Secondary	BA INTERPERSONAL SKILLS 12A (78), PHYSICAL EDUCATION 8 (13)	32	Our grade 8 PE sections are very full this semester. Also, one of the students in the class is a peer tutor, who is there with the the teachers permission, who helps the teacher.
03838045	Steveston-London Secondary	BA INTERPERSONAL SKILLS 12A (91), PHYSICAL EDUCATION 8 (12)	32	This class has a peer tutor who joined the class with the teacher's permission, who helps the teacher.
03838045	Steveston-London Secondary	INSTRUMENTAL MUSIC 11: GUITAR (14), INSTRUMENTAL MUSIC 12: GUITAR (14), MUSIC 10	31	We only have a single guitar class this semester.
03838045	Steveston-London Secondary	BA INTERPERSONAL SKILLS 12A (79), SOCIAL STUDIES 9 (12)	31	One of the students in this class is a peer tutor who is there, with the teacher's permission, to help the younger students with the course.
03838045	Steveston-London Secondary	ECONOMICS 12 (12)	31	We have only two economics classes this year, one this semester, and both are very full.
03838045	Steveston-London Secondary	BA INTERPERSONAL SKILLS 12A (71), CHEMISTRY 11 (13)	31	This class has a peer tutor who joined the class with the teacher's permission, who helps the teacher.

## District - Rationales for Classes with More Than 30 Students

### 038 - Richmond

Source: Class size data collection (as of September 30) from standard BC public schools.

Under the *School Act* whenever a class in grades 4 to 12 exceeds 30 students, the principal and the superintendent must confirm that in their opinion, the learning conditions in that classroom are appropriate for the students. In addition, the principal must state the reasons or rationale for that class exceeding 30 students. If parents have questions regarding the information in this report, they should contact the school principal.

Ministry Code	School Name	Division/Class	No. of Students	Rationale
03838045	Steveston-London Secondary	PHYSICAL EDUCATION 9 (12)	31	All our grade 9 PE classes are at or very near capacity (29 or 30). Timetable restrictions precluded us from moving a student from this class.
03838045	Steveston-London Secondary	BA INTERPERSONAL SKILLS 12A (72), FRENCH 10 (11)	31	This class has a peer tutor, who joined with the teacher's permission who helps the teacher.
03838045	Steveston-London Secondary	BA INTERPERSONAL SKILLS 12A (86), PRE-CALCULUS 11 (11)	32	All of our grade 11 math classes this semester are very full. One of the students in this class is a peer tutor who is there, with the teacher's permission, to help other students with their work.
03838058	Cambie Secondary	FRENCH 8 (01)	31	A tight timetable with an awkward grade group does not allow for balancing.
03838058	Cambie Secondary	SOCIAL STUDIES 8 (04)	31	EA support is provided for this required course. Due to student's course preference there is also an inability to balance sections.
03838058	Cambie Secondary	BA LEISURE & RECREATIONAL ACTIVITIES 12A (01)	36	This is a Leadership class that meets the needs of like-minded and motivated students.
03838058	Cambie Secondary	PHYSICAL EDUCATION 11 (02), PHYSICAL EDUCATION 12 (02)	32	There is an inability to balance sections due to student's course preferences. Meets the needs of like-minded students.
03838058	Cambie Secondary	PHYSICAL EDUCATION 8 (02)	31	A tight timetable creates an inability to balance sections of this required course.
03838058	Cambie Secondary	CHEMISTRY 11 (04)	31	There is an inability to balance sections due to student's course preference for this course that is required for graduation.
03838058	Cambie Secondary	BUSINESS EDUCATION 10: GENERAL (01)	31	This is a specialty elective course with two sections. Because of student course preference we have an inability to balance these sections.
03838058	Cambie Secondary	FRENCH 10 (02)	31	The awkward number of students selecting this language elective creates an inability to balance sections.



## District - Rationales for Classes with More Than 30 Students

### 038 - Richmond

Source: Class size data collection (as of September 30) from standard BC public schools.

Under the *School Act* whenever a class in grades 4 to 12 exceeds 30 students, the principal and the superintendent must confirm that in their opinion, the learning conditions in that classroom are appropriate for the students. In addition, the principal must state the reasons or rationale for that class exceeding 30 students. If parents have questions regarding the information in this report, they should contact the school principal.

Ministry Code	School Name	Division/Class	No. of Students	Rationale
03838058	Cambie Secondary	PHYSICAL EDUCATION 10 (03)	31	A tight timetable creates an inability to balance sections of this course that is required for graduation.
03838058	Cambie Secondary	SCIENCE 10 (01)	31	This is an Enriched class with like-minded and motivated students.
03838058	Cambie Secondary	SPANISH 10 (02), SPANISH 12 (01)	31	The awkward number of students selecting this language elective creates an inability to balance sections.
03838058	Cambie Secondary	INSTRUMENTAL MUSIC 11: CONCERT BAND (01), INSTRUMENTAL MUSIC 11: JAZZ BAND (01),	32	The numbers in this course support and enhance the band program. The class meets the needs of like-minded students.
03838058	Cambie Secondary	SCIENCE 8 (05)	31	This class is part of our grade 8 pod that is being co-taught by a Science teacher and Resource teacher. A tight timetable creates an inability to balance sections of this required course.
03838058	Cambie Secondary	STUDIO ARTS 11: DRAWING AND PAINTING (01), STUDIO ARTS 12: DRAWING AND PAINTING	31	This is a specialty course with two sections. A tight timetable based on student preferences creates an inability to balance sections of this required course.
03838058	Cambie Secondary	FOUNDATIONS OF MATH AND PRE-CALCULUS 10 (03)	31	A tight timetable makes it hard to balance for this course that is a graduation requirement.
03838058	Cambie Secondary	SOCIAL STUDIES 10 (01)	31	A tight timetable creates an inability to balance sections of this course required for graduation.
03838058	Cambie Secondary	SPANISH 10 (01)	31	The awkward number of students selecting this language elective creates an inability to balance sections.
03838058	Cambie Secondary	CALCULUS 12 (01)	31	This specialty course meets the needs of like-minded students. It also has had a trend of attrition through the year.
03838058	Cambie Secondary	SOCIAL STUDIES 9 (04)	31	A tight timetable and awkward grade group creates an inability to balance the sections for this required course.
03838058	Cambie Secondary	BA LEISURE & RECREATIONAL ACTIVITIES 11A (01)	35	This is a Leadership class that meets the needs of like-minded and motivated students.

## District - Rationales for Classes with More Than 30 Students

### 038 - Richmond

Source: Class size data collection (as of September 30) from standard BC public schools.

Under the *School Act* whenever a class in grades 4 to 12 exceeds 30 students, the principal and the superintendent must confirm that in their opinion, the learning conditions in that classroom are appropriate for the students. In addition, the principal must state the reasons or rationale for that class exceeding 30 students. If parents have questions regarding the information in this report, they should contact the school principal.

Ministry Code	School Name	Division/Class	No. of Students	Rationale
03838058	Cambie Secondary	FOUNDATIONS OF MATH AND PRE-CALCULUS 10 (04)	31	A tight timetable makes it hard to balance for this course that is a graduation requirement.
03838058	Cambie Secondary	SOCIAL STUDIES 10 (04)	32	A tight timetable creates an inability to balance sections for this course required for graduation.
03838062	Robert Alexander McMath Secondary	DRAMA 8 (03)	31	Awkward grade grouping.
03838062	Robert Alexander McMath Secondary	INSTRUMENTAL MUSIC 11: CONCERT BAND (02), INSTRUMENTAL MUSIC 12: CONCERT BAND (0)	36	Music class suitable for large class size.
03838062	Robert Alexander McMath Secondary	DRAMA 8 (21)	31	Awkward grade grouping.
03838062	Robert Alexander McMath Secondary	SOCIAL STUDIES 10 (23)	31	Awkward grade grouping for FI in grade ten.
03838062	Robert Alexander McMath Secondary	FRANÇAIS LANGUE SECONDE-IMMERSION 10 (22)	31	Awkward grade grouping for FI.
03838062	Robert Alexander McMath Secondary	SCIENCES HUMAINES 10 (01)	31	Awkward grade grouping for FI in grade 10.
03838064	A.R. MacNeill Secondary	JAPANESE 10 (01)	31	Singleton, tight timetable and inability to increase sections
03838064	A.R. MacNeill Secondary	MUSIC 8 (01)	33	Enhances program, like minded students, specialty course
03838064	A.R. MacNeill Secondary	FRENCH 9 (02)	31	Tight timetable-inability to increase sections or move students
03838064	A.R. MacNeill Secondary	ENGLISH 11 (01)	31	Tight timetable, inability to increase sections, course required for graduation
03838064	A.R. MacNeill Secondary	Combined classes to accommodate broad range of course CHORAL MUSIC 11: CONCERT CH	39	Combined classes to accommodate broad range of course offerings, enhances program, like-minded students, specialty courses
03838064	A.R. MacNeill Secondary	INSTRUMENTAL MUSIC 11: CONCERT BAND (01), INSTRUMENTAL MUSIC 12: CONCERT BAND (0)	37	Enhances program, combined classes to accommodate broad range of course offerings, meets needs of students with like-minded, specialty courses
03838065	Richmond Secondary	FRENCH 8 (03)	32	Tight Timetable / Inability to increase sections or move students



## District - Rationales for Classes with More Than 30 Students

### 038 - Richmond

Source: Class size data collection (as of September 30) from standard BC public schools.

Under the *School Act* whenever a class in grades 4 to 12 exceeds 30 students, the principal and the superintendent must confirm that in their opinion, the learning conditions in that classroom are appropriate for the students. In addition, the principal must state the reasons or rationale for that class exceeding 30 students. If parents have questions regarding the information in this report, they should contact the school principal.

Ministry Code	School Name	Division/Class	No. of Students	Rationale
03838065	Richmond Secondary	LD LOCALLY DEVELOPED 11B (01)	31	This is the second block of the IBCH(HL) 11 double block class. Meets the needs of like minded / motivated students (International Baccalaureate Program). Front Loading based on past trends re: attrition over time
03838065	Richmond Secondary	PRINCIPLES OF MATHEMATICS 12 (02)	31	This is the second block of the IB MATH (SL) 11 double block class. Meets the needs of like minded / motivated students (International Baccalaureate Program). Front Loading based on past trends re: attrition over time
03838065	Richmond Secondary	SOCIAL STUDIES 8 (01)	31	Tight Timetable / Inability to increase sections or move students. Awkward grade groups
03838065	Richmond Secondary	ENGLISH 11 (01)	31	Tight timetable (inability to increase sections or move students)
03838065	Richmond Secondary	IB FRENCH B (HL) 11 (01), IB FRENCH B (SL) 11 (01)	32	Meets the needs of like minded / motivated students (International Baccalaureate Program)
03838065	Richmond Secondary	IB THEORY OF KNOWLEDGE 11 (02)	32	Meets the needs of like minded / motivated students (International Baccalaureate Program, Front Loading based on past trends re: attrition over time
03838065	Richmond Secondary	SCIENCE 8 (01)	31	Tight Timetable / Inability to increase sections or move students. Awkward grade groups
03838065	Richmond Secondary	CHORAL MUSIC 11: CONCERT CHOIR (01), CHORAL MUSIC 12: CONCERT CHOIR (01), MUSIC	32	EA support provided / Enrolment numbers enhance and support program
03838065	Richmond Secondary	IB CHEMISTRY (HL) 11 (01)	31	Meets the needs of like minded / motivated students (International Baccalaureate Program). Front Loading based on past trends re: attrition over time
03838065	Richmond Secondary	FRENCH 8 (02)	31	Tight Timetable / Inability to increase sections or move students

## District - Rationales for Classes with More Than 30 Students

### 038 - Richmond

Source: Class size data collection (as of September 30) from standard BC public schools.

Under the *School Act* whenever a class in grades 4 to 12 exceeds 30 students, the principal and the superintendent must confirm that in their opinion, the learning conditions in that classroom are appropriate for the students. In addition, the principal must state the reasons or rationale for that class exceeding 30 students. If parents have questions regarding the information in this report, they should contact the school principal.

Ministry Code	School Name	Division/Class	No. of Students	Rationale
03838065	Richmond Secondary	IB FRENCH B (HL) 11 (02), IB FRENCH B (SL) 11 (02)	32	Meets the needs of like minded / motivated students (International Baccalourelate Program)
03838065	Richmond Secondary	MATHEMATICS 8 (01)	31	Tight Timetable / Inability to increase sections or move students. Awkward grade groups
03838065	Richmond Secondary	HISTORY 12 (01)	31	This is the second block of the IB HISTORY (HL)12 double block class. Meets the needs of like minded / motivated students (International Baccalaureate Program).
03838065	Richmond Secondary	IB THEORY OF KNOWLEDGE 11 (01)	33	Meets the needs of like minded / motivated students (International Baccalaureate Program, Front Loading based on past trends re: attrition over time
03838065	Richmond Secondary	IB MATHEMATICS (SL) 11 (01)	33	Meets the needs of like minded / motivated students (International Baccalourelate Program)
03838065	Richmond Secondary	IB MATHEMATICS (SL) 11 (02)	31	Meets the needs of like minded / motivated students (International Baccalaureate Program). Front Loading based on past trends re: attrition over time
03838065	Richmond Secondary	PHYSICAL EDUCATION 8 (03)	32	Tight Timetable / Inability to increase sections or move students. Awkward grade groups
03838065	Richmond Secondary	FRENCH 8 (01)	32	Tight Timetable / Inability to increase sections or move students
03838065	Richmond Secondary	SCIENCE 8 (03)	31	Tight Timetable / Inability to increase sections or move students. Awkward grade groups
03838065	Richmond Secondary	IB THEORY OF KNOWLEDGE 11 (03)	33	Meets the needs of like minded / motivated students (International Baccalaureate Program). Front Loading based on past trends re: attrition over time
03838065	Richmond Secondary	IB THEORY OF KNOWLEDGE 11 (05)	33	Meets the needs of like minded / motivated students (International Baccalaureate Program). Front Loading based on past trends re: attrition over time
03838065	Richmond Secondary	MUSIC 10: GENERAL (01)	40	Support or enhances program

## District - Rationales for Classes with More Than 30 Students

### 038 - Richmond

Source: Class size data collection (as of September 30) from standard BC public schools.

Under the *School Act* whenever a class in grades 4 to 12 exceeds 30 students, the principal and the superintendent must confirm that in their opinion, the learning conditions in that classroom are appropriate for the students. In addition, the principal must state the reasons or rationale for that class exceeding 30 students. If parents have questions regarding the information in this report, they should contact the school principal.

Ministry Code	School Name	Division/Class	No. of Students	Rationale
03838065	Richmond Secondary	IB THEORY OF KNOWLEDGE 11 (04)	34	Meets the needs of like minded / motivated students (International Baccalaureate Program). Front Loading based on past trends re: attrition over time
03838065	Richmond Secondary	CHORAL MUSIC 11: VOCAL JAZZ (01), CHORAL MUSIC 12: VOCAL JAZZ (01), INSTRUMENTAL	50	Supports or enhances the program
03838065	Richmond Secondary	FRENCH 8 (04)	32	Tight Timetable / Inability to increase sections or move students
03838065	Richmond Secondary	INSTRUMENTAL MUSIC 11: CONCERT BAND (01), INSTRUMENTAL MUSIC 12: CONCERT BAND (0)	32	Supports or enhances the program
03838065	Richmond Secondary	MATHEMATICS 8 (03)	31	Educational Assistant Provided. Tight Timetable / Inability to increase sections or move students. Awkward grade groups
03838065	Richmond Secondary	PRINCIPLES OF MATHEMATICS 12 (01)	33	This is the second block of the IB MATH (SL) 11 double block class. Meets the needs of like minded / motivated students (International Baccalaureate Program). Front Loading based on past trends re: attrition over time