

Overview of Class Size and Composition in British Columbia Public Schools 2011/12

School District 028 Quesnel

These class size data are current as of September 30, 2011 and have been verified by school districts.

PLEASE NOTE

The Ministry makes small and continuous improvements to the quality of its data. Sometimes these changes result in differences from previously published reports. The data in this report are the most accurate data available at time of publication.

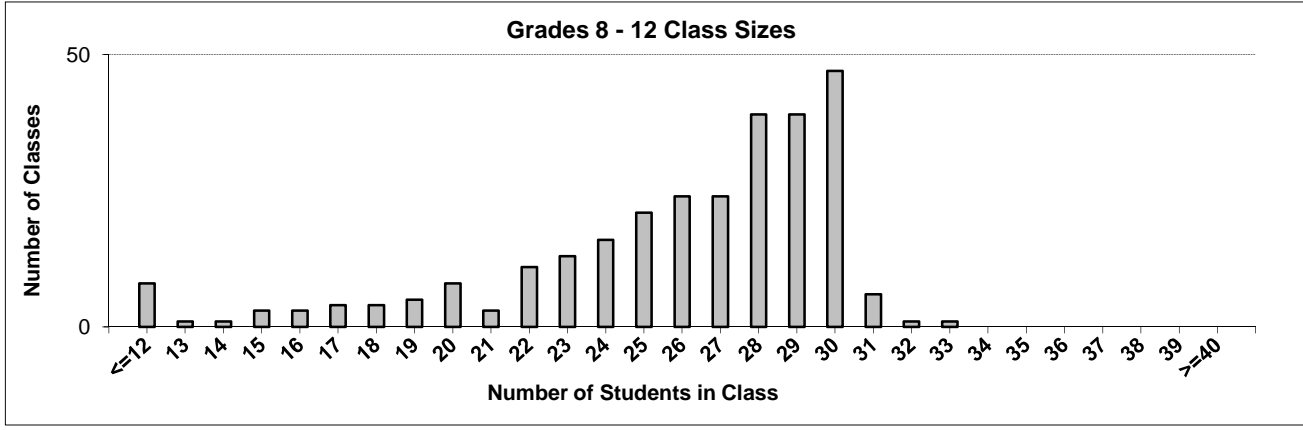
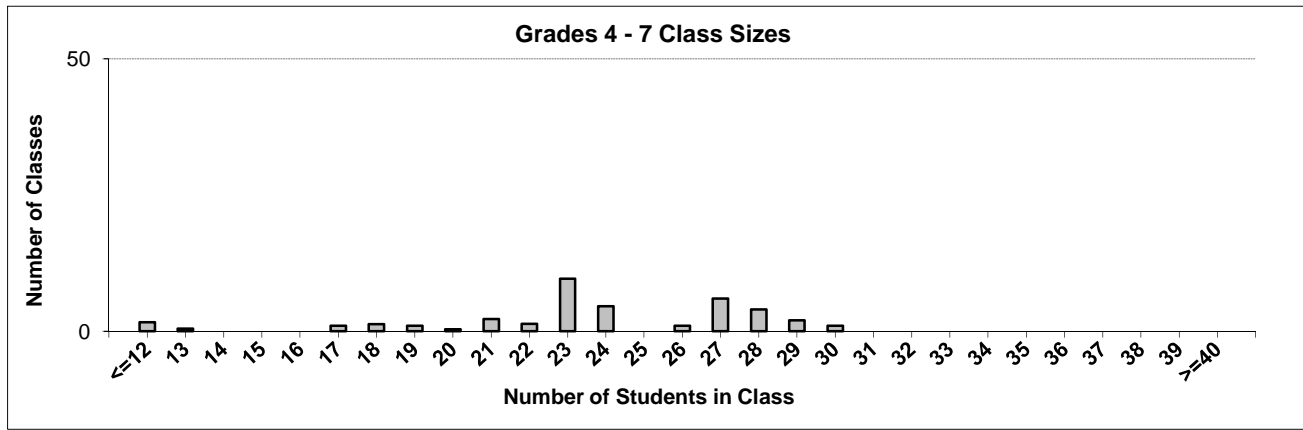
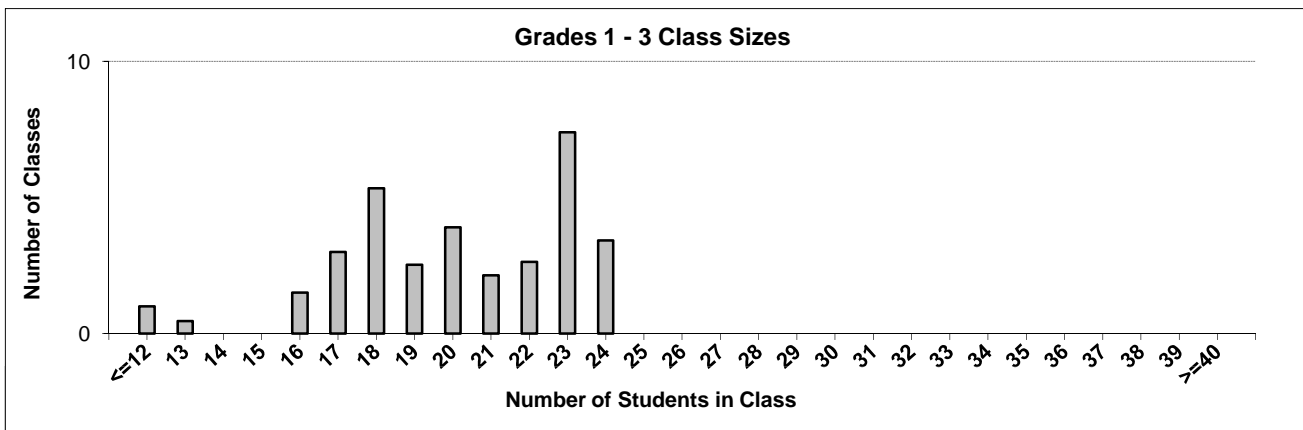
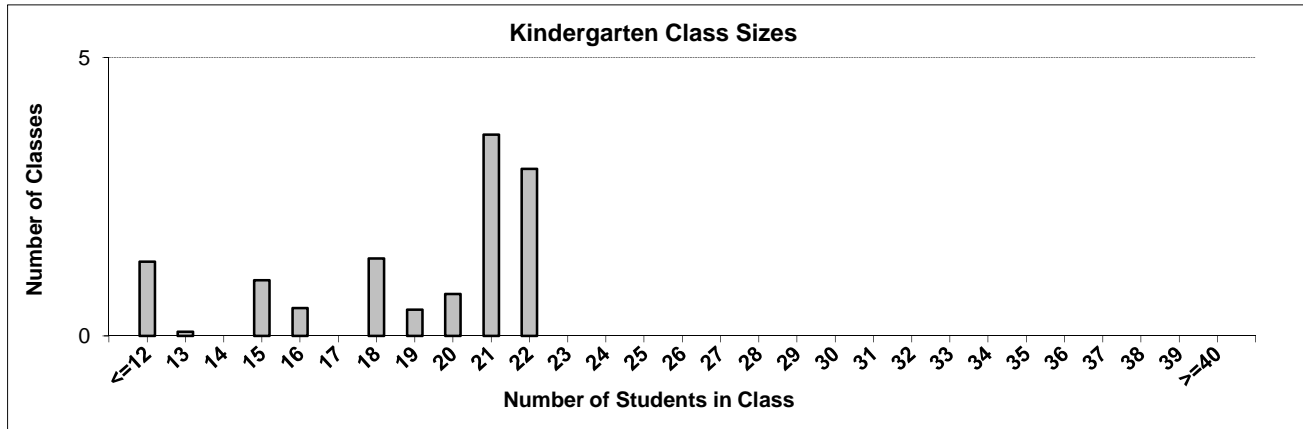
Ministry reports are available at <http://www.bced.gov.bc.ca/reporting/>

Contact the Information Department at educ.reportingunit@gov.bc.ca

District Class Sizes

028 Quesnel

Source: Class size data collection (as of September 30) from standard BC public schools.



District - Average Class Size

028 Quesnel

Source: Class size data collection (as of September 30) from standard BC public schools.

District - Average Class Size	Kindergarten	Grade 1 - 3	Grade 4 - 7	Grade 8 - 12
	18.9	20.0	23.5	25.7

Province - Average Class Size	Kindergarten	Grade 1 - 3	Grade 4 - 7	Grade 8 - 12
	18.5	20.6	25.9	25.0

Number of Reported Classes with Assigned Education Assistants	105
---------------------------------------------------------------	-----

Number of Reported Schools in District	16
----------------------------------------	----

Number of Reported Classes in District	365
----------------------------------------	-----

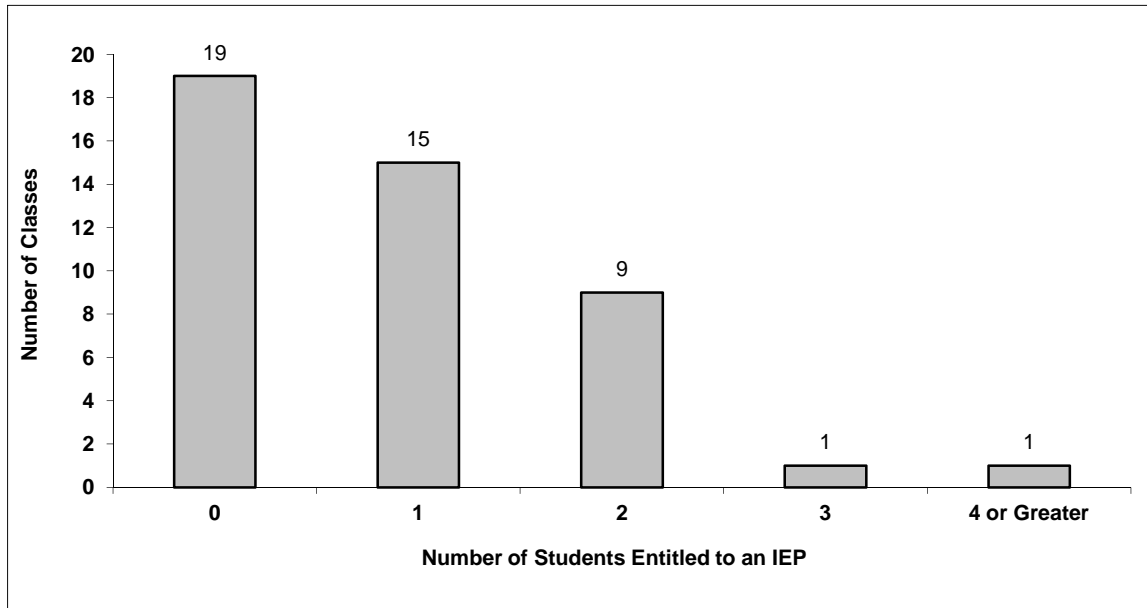
Number of Reported Classes in District with more than 30 Students	8
-------------------------------------------------------------------	---

District - Students Entitled to an Individual Education Plan (IEP)

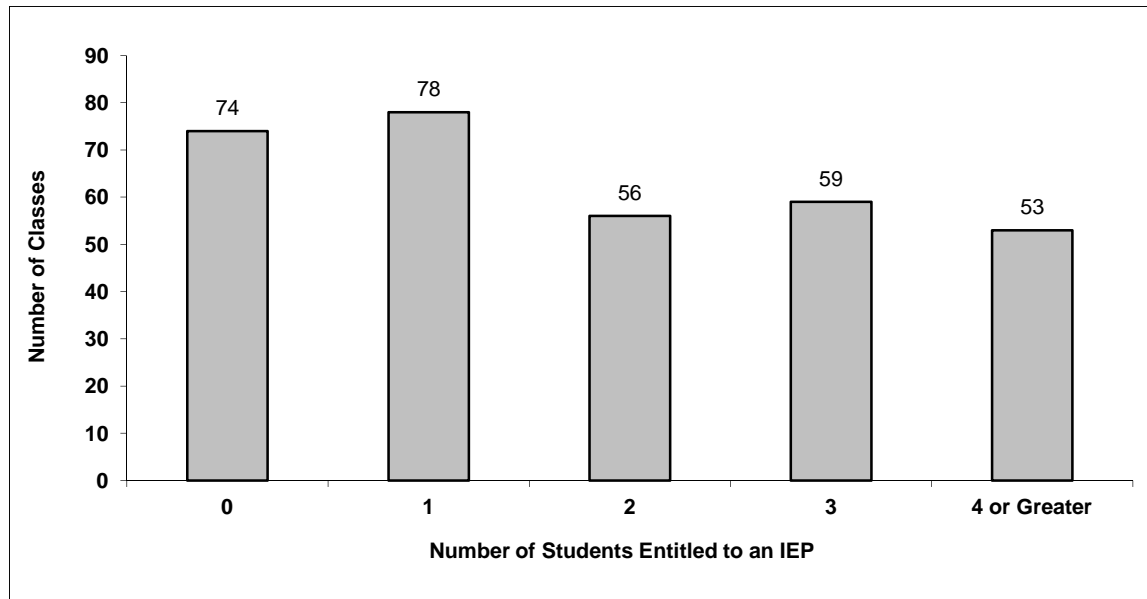
028 Quesnel

Source: Class size data collection (as of September 30) from standard BC public schools.

Grades K-3 - Number of Classes in District with 'X' Number of Students Entitled to an IEP



Grades 4-12 - Number of Classes in District with 'X' Number of Students Entitled to an IEP

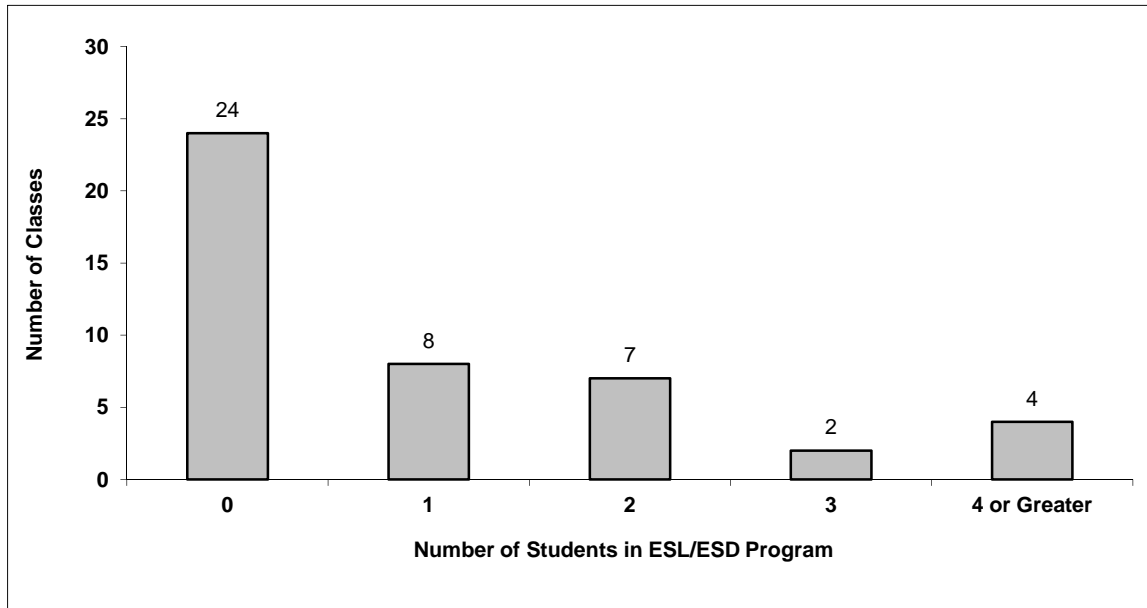


District - Students in English as a Second Language/Dialect (ESL/ESD) Program

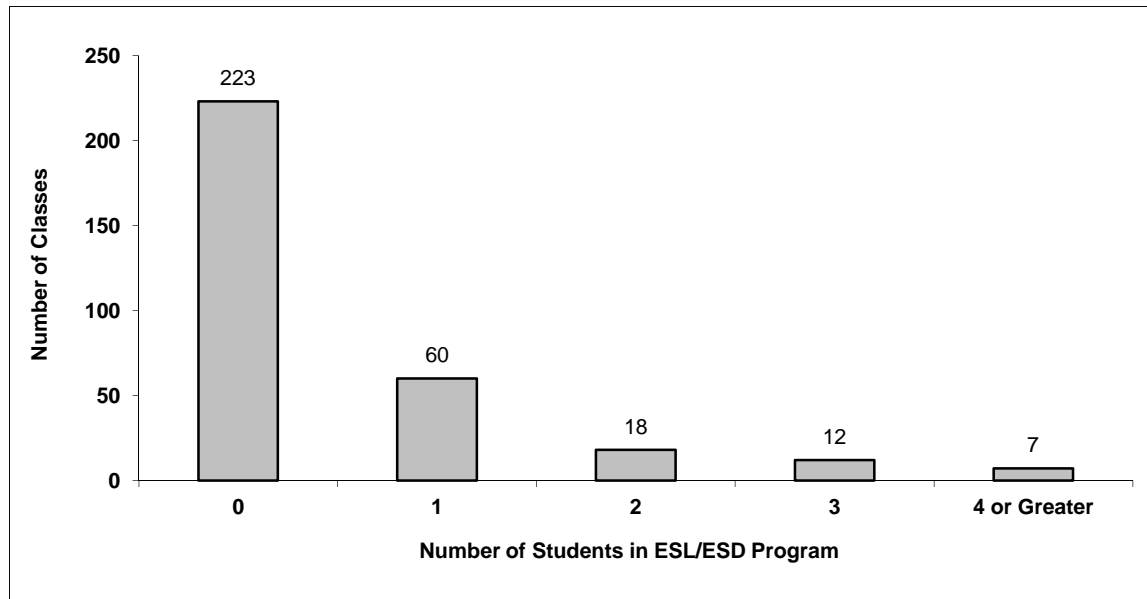
028 Quesnel

Source: Class size data collection (as of September 30) from standard BC public schools.

Grades K-3 - Number of Classes in District with 'X' Number of Students in ESL/ESD Program



Grades 4-12 - Number of Classes in District with 'X' Number of Students in ESL/ESD Program



028 Quesnel - Average Class Size by School

Source: Class size data collection (as of September 30) from standard BC public schools.

Ministry Code	School Name	Kindergarten	Grade 1 - 3	Grade 4 - 7	Grade 8 - 12
02828040	Barlow Creek Elementary	18.0	20.1	21.9	-
02828020	Bouchie Lake Elementary School	21.0	22.7	25.7	-
02828024	Carson Elementary School	22.0	19.3	27.4	-
02828034	Correliou Secondary School	-	-	-	25.9
02828021	Dragon Lake Elementary	12.0	22.7	25.3	-
02828019	Ecole Baker	21.5	19.4	23.0	-
02828008	Kersley Elementary School	20.0	20.0	22.2	-
02828032	Lakeview Elementary	20.7	22.8	27.3	-
02828012	Narcosli Elementary	13.0	13.0	13.0	-
02828041	Nazko Valley Elementary	16.0	13.8	9.0	-
02828038	Parkland Elementary	19.0	18.3	20.5	-
02828004	Quesnel Junior School	-	-	-	25.5
02828016	Red Bluff Lhtako Elementary	21.0	17.6	26.4	-
02828039	Riverview Elementary	15.0	20.6	20.2	-
02828036	Voyageur Elementary School	20.4	22.4	23.0	-
02828002	Wells Barkerville Elementary	9.0	9.0	9.0	-

Glossary

Term	Definition / Notes
English as a Second Language/Dialect (ESL/ESD) Program	<ul style="list-style-type: none"> • A program offered to students whose primary language(s) is/are other than English, and who may require additional services.
Grade	<ul style="list-style-type: none"> • The assigned grade of a student on September 30.
KH	<ul style="list-style-type: none"> • Kindergarten half-time
KF	<ul style="list-style-type: none"> • Kindergarten full-time
Number of Students	<ul style="list-style-type: none"> • Student population is calculated by headcount.
Student	<ul style="list-style-type: none"> • A person enrolled in a BC school. Student populations are calculated by headcount. Students include all adult and school-aged persons who are working toward a certificate of graduation.
Student Entitled to an Individual Education Plan	<ul style="list-style-type: none"> • A student for whom an Individual Education Plan (IEP) must be designed under the Individual Education Plan order, Ministerial Order 638/95.

District - Rationales for Classes with More Than 30 Students

028 - Quesnel

Source: Class size data collection (as of September 30) from standard BC public schools.

Under the *School Act* whenever a class in grades 4 to 12 exceeds 30 students, the principal and the superintendent must confirm that in their opinion, the learning conditions in that classroom are appropriate for the students. In addition, the principal must state the reasons or rationale for that class exceeding 30 students. If parents have questions regarding the information in this report, they should contact the school principal.

Ministry Code	School Name	Division/Class	No. of Students	Rationale
02828004	Quesnel Junior School	ENGLISH LANGUAGE ARTS 8 (18), ENGLISH LANGUAGE ARTS 9 (19)	31	This class has no special education students and the learning environment is suitable for a larger class size.
02828004	Quesnel Junior School	SCIENCES 8 (18), SCIENCES 9 (19)	31	This class has no special education students and the learning environment is suitable for a larger class size.
02828004	Quesnel Junior School	FRANÇAIS LANGUE SECONDE-IMMERSION 8 (18), FRANÇAIS LANGUE SECONDE-IMMERSION 9 (1)	31	This class has no special education students and the learning environment is suitable for a larger class size.
02828004	Quesnel Junior School	PHYSICAL EDUCATION 8 (18), PHYSICAL EDUCATION 9 (19)	31	This class has no special education students and the learning environment is suitable for a larger class size.
02828004	Quesnel Junior School	SCIENCES HUMAINES 8 (18), SCIENCES HUMAINES 9 (19)	31	This class has no special education students and the learning environment is suitable for a larger class size.
02828034	Correliou Secondary School	INSTRUMENTAL MUSIC 11: CONCERT BAND (01), INSTRUMENTAL MUSIC 12: CONCERT BAND (0)	33	Band Class is suitable candidate for larger class size
02828034	Correliou Secondary School	BA INTERPERSONAL SKILLS 11A (05), SPANISH 10 (01)	31	This class has one student designated in a special education category. The class is appropriate for student learning.
02828034	Correliou Secondary School	DRAMA 10: GENERAL (01), THEATRE PERFORMANCE 12:DIRECTING/SCRIPT (01), THEATRE PR	32	Drama Class is suitable candidate for larger class size