

Overview of Class Size and Composition in British Columbia Public Schools 2011/12

School District 019 Revelstoke

These class size data are current as of September 30, 2011 and have been verified by school districts.

PLEASE NOTE

The Ministry makes small and continuous improvements to the quality of its data. Sometimes these changes result in differences from previously published reports. The data in this report are the most accurate data available at time of publication.

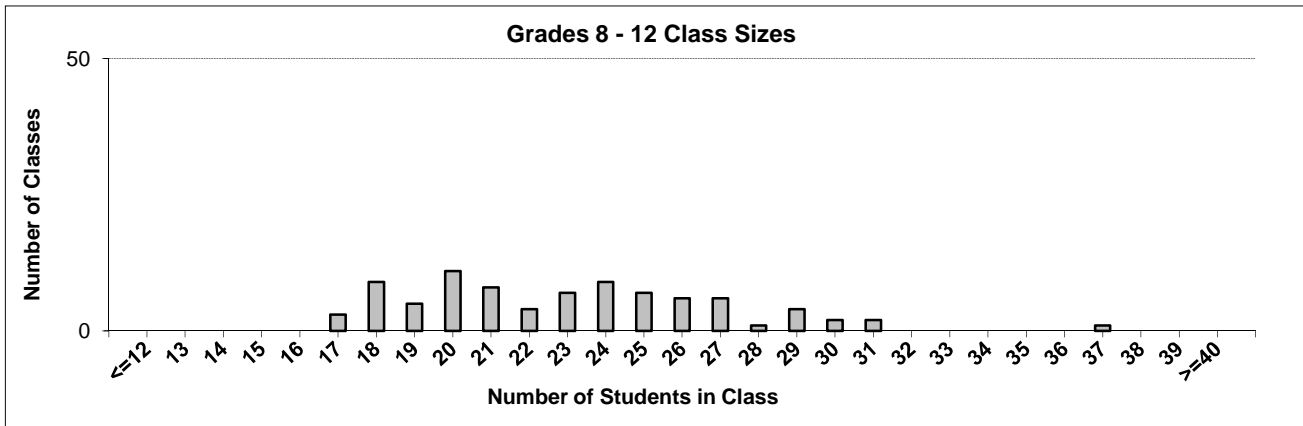
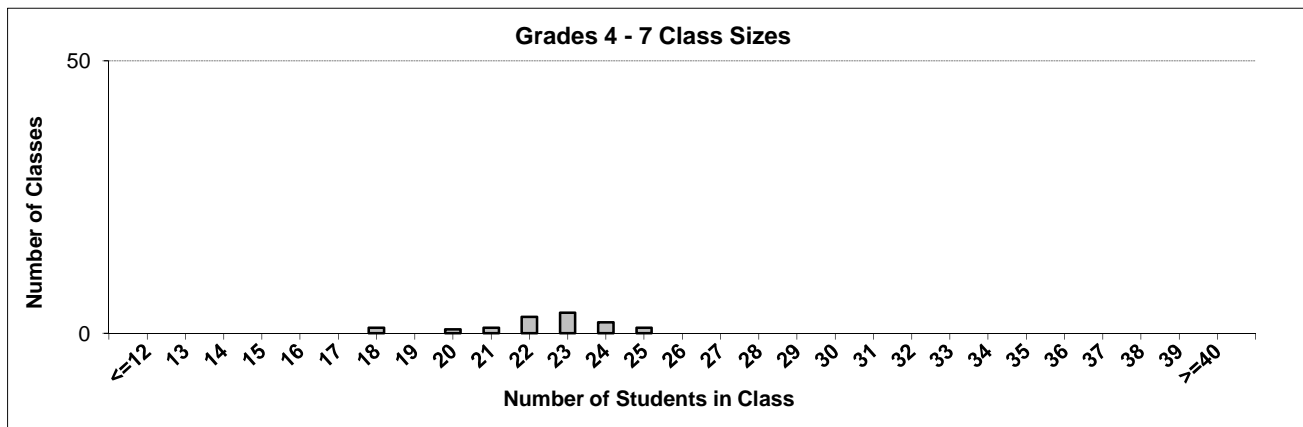
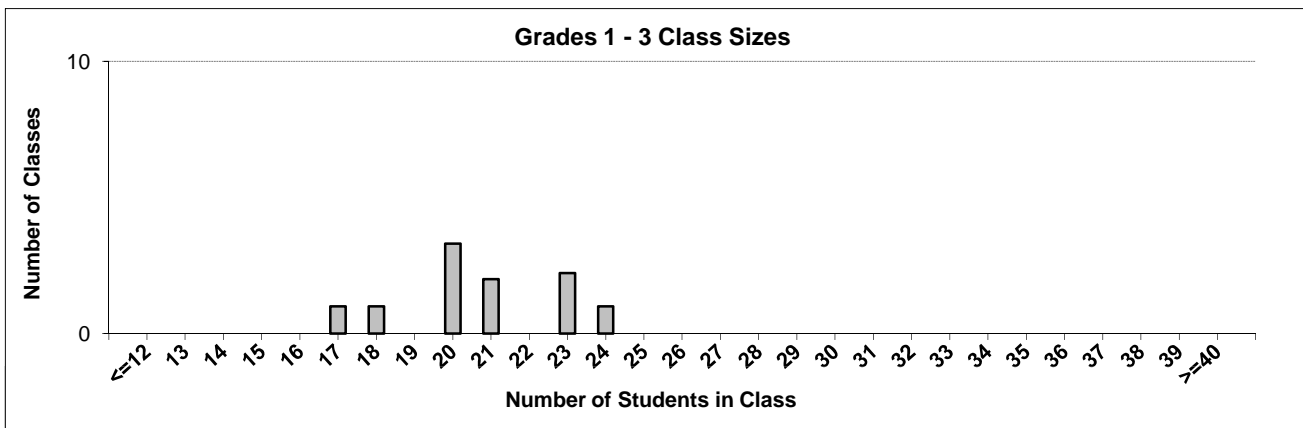
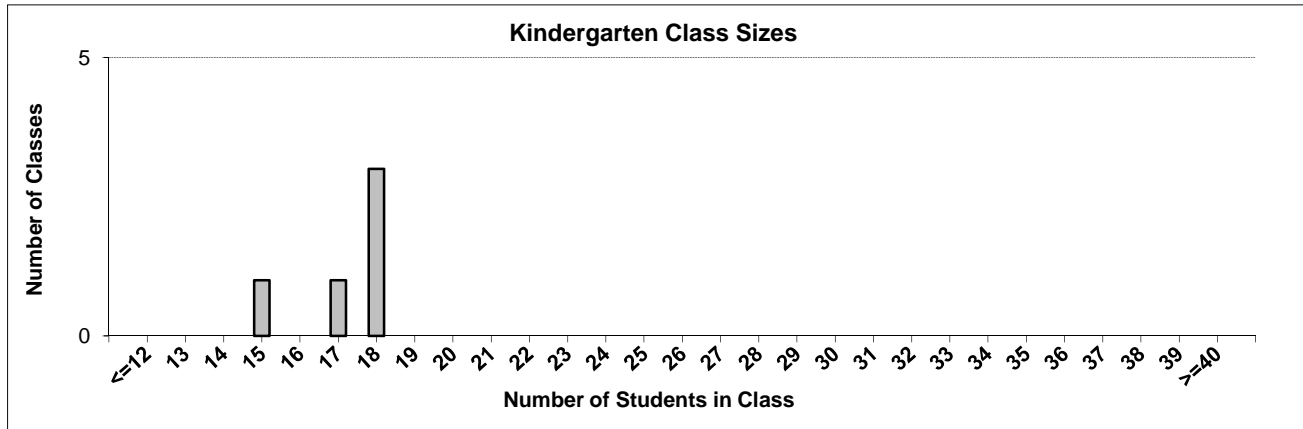
Ministry reports are available at <http://www.bced.gov.bc.ca/reporting/>

Contact the Information Department at educ.reportingunit@gov.bc.ca

District Class Sizes

019 Revelstoke

Source: Class size data collection (as of September 30) from standard BC public schools.



District - Average Class Size

019 Revelstoke

Source: Class size data collection (as of September 30) from standard BC public schools.

District - Average Class Size	Kindergarten	Grade 1 - 3	Grade 4 - 7	Grade 8 - 12
	17.2	20.7	22.4	23.0

Province - Average Class Size	Kindergarten	Grade 1 - 3	Grade 4 - 7	Grade 8 - 12
	18.5	20.6	25.9	25.0

Number of Reported Classes with Assigned Education Assistants	44
---------------------------------------------------------------	----

Number of Reported Schools in District	5
----------------------------------------	---

Number of Reported Classes in District	113
----------------------------------------	-----

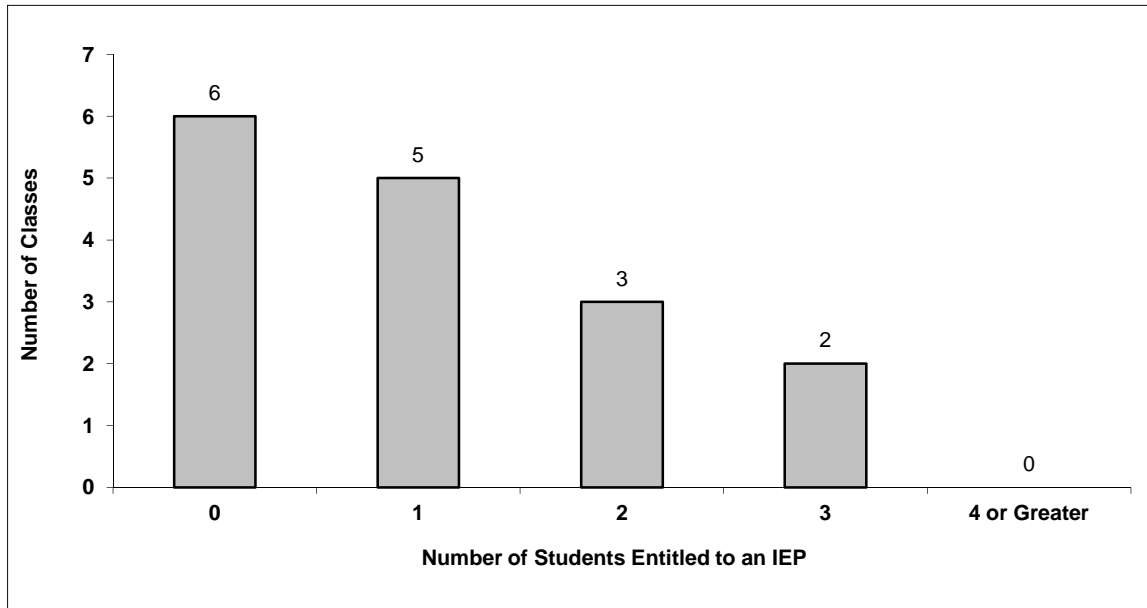
Number of Reported Classes in District with more than 30 Students	3
-------------------------------------------------------------------	---

District - Students Entitled to an Individual Education Plan (IEP)

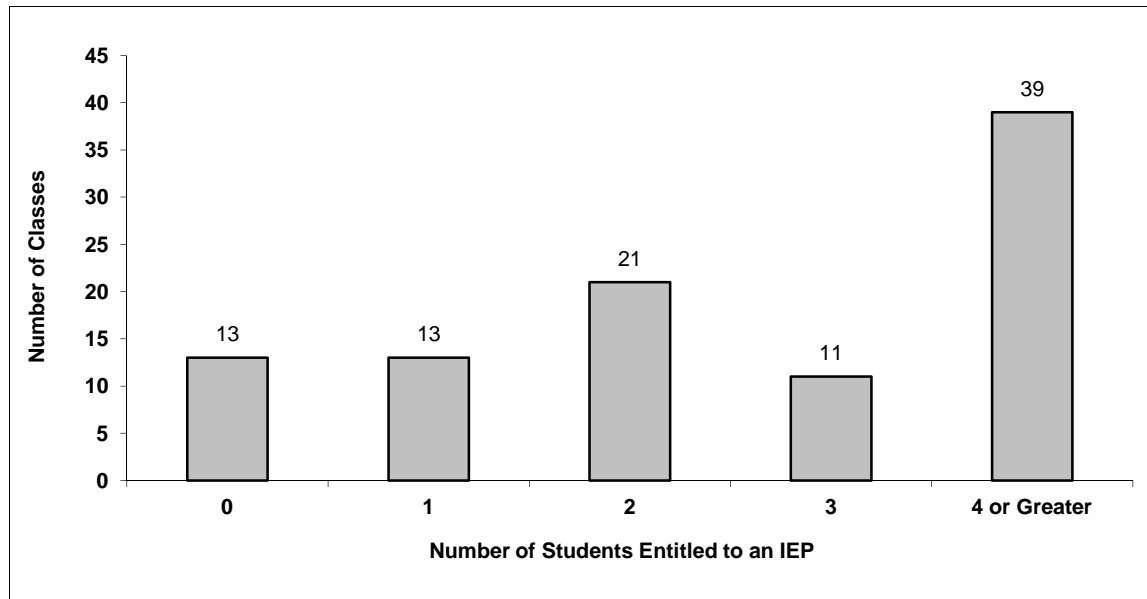
019 Revelstoke

Source: Class size data collection (as of September 30) from standard BC public schools.

Grades K-3 - Number of Classes in District with 'X' Number of Students Entitled to an IEP



Grades 4-12 - Number of Classes in District with 'X' Number of Students Entitled to an IEP

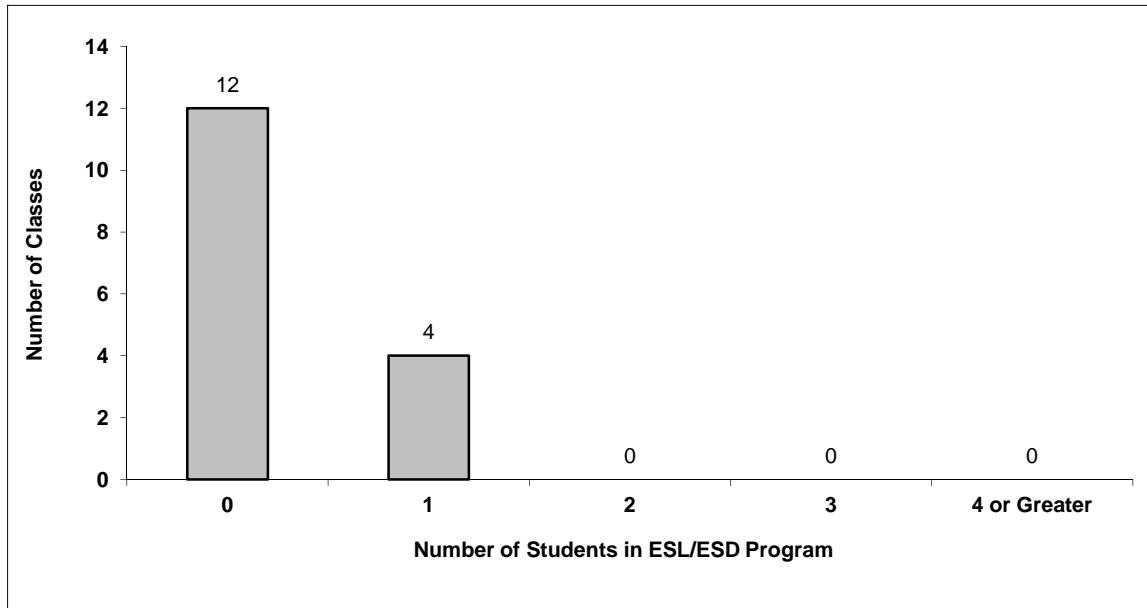


District - Students in English as a Second Language/Dialect (ESL/ESD) Program

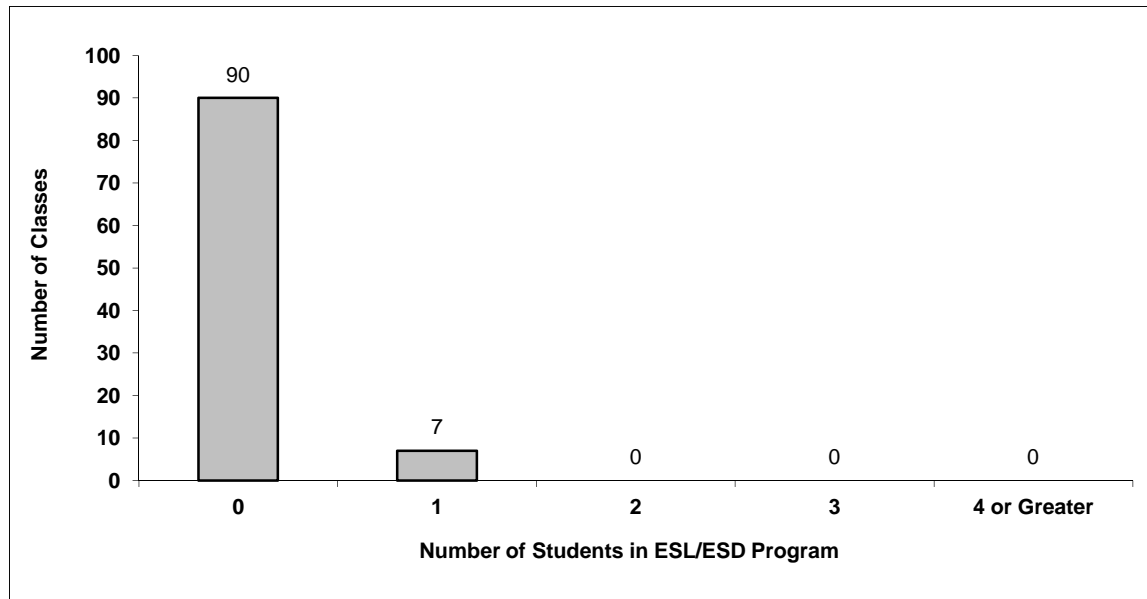
019 Revelstoke

Source: Class size data collection (as of September 30) from standard BC public schools.

Grades K-3 - Number of Classes in District with 'X' Number of Students in ESL/ESD Program



Grades 4-12 - Number of Classes in District with 'X' Number of Students in ESL/ESD Program



019 Revelstoke - Average Class Size by School

Source: Class size data collection (as of September 30) from standard BC public schools.

Ministry Code	School Name	Kindergarten	Grade 1 - 3	Grade 4 - 7	Grade 8 - 12
01919015	Arrow Heights Elementary	18.0	23.0	23.7	-
01919013	Columbia Park Elementary	16.0	20.3	22.4	-
01919011	Mount Begbie Elementary	18.0	19.4	20.5	-
01919005	Mountain View Elementary	18.0	20.8	22.9	-
01919003	Revelstoke Secondary	-	-	-	23.0

Glossary

Term	Definition / Notes
English as a Second Language/Dialect (ESL/ESD) Program	<ul style="list-style-type: none"> • A program offered to students whose primary language(s) is/are other than English, and who may require additional services.
Grade	<ul style="list-style-type: none"> • The assigned grade of a student on September 30.
KH	<ul style="list-style-type: none"> • Kindergarten half-time
KF	<ul style="list-style-type: none"> • Kindergarten full-time
Number of Students	<ul style="list-style-type: none"> • Student population is calculated by headcount.
Student	<ul style="list-style-type: none"> • A person enrolled in a BC school. Student populations are calculated by headcount. Students include all adult and school-aged persons who are working toward a certificate of graduation.
Student Entitled to an Individual Education Plan	<ul style="list-style-type: none"> • A student for whom an Individual Education Plan (IEP) must be designed under the Individual Education Plan order, Ministerial Order 638/95.

District - Rationales for Classes with More Than 30 Students

019 - Revelstoke

Source: Class size data collection (as of September 30) from standard BC public schools.

Under the School Act whenever a class in grades 4 to 12 exceeds 30 students, the principal and the superintendent must confirm that in their opinion, the learning conditions in that classroom are appropriate for the students. In addition, the principal must state the reasons or rationale for that class exceeding 30 students. If parents have questions regarding the information in this report, they should contact the school principal.

Ministry Code	School Name	Division/Class	No. of Students	Rationale
01919003	Revelstoke Secondary	BA HEALTH RELATED ACTIVITIES 11A (Y1), BA HEALTH RELATED ACTIVITIES 12A (Y1)	31	All students who requested the course were accommodated, having given consideration to the instructor's input.
01919003	Revelstoke Secondary	INSTRUMENTAL MUSIC 11: CONCERT BAND (Y8), INSTRUMENTAL MUSIC 12: CONCERT BAND (Y	37	37 students requested the course. Band instructor preferred larger grouping of students to function effectively as a concert band.
01919003	Revelstoke Secondary	MUSIC 10: CONCERT BAND (Y4), MUSIC 9 (Y4)	31	61 students requested the course. Band instructor preferred students to be divided into 2 classes to function effectively as a concert band.