

# Overview of Class Size and Composition in British Columbia Public Schools 2011/12

## School District 005 Southeast Kootenay

These class size data are current as of September 30, 2011 and have been verified by school districts.

---

### **PLEASE NOTE**

The Ministry makes small and continuous improvements to the quality of its data. Sometimes these changes result in differences from previously published reports. The data in this report are the most accurate data available at time of publication.

Ministry reports are available at <http://www.bced.gov.bc.ca/reporting/>

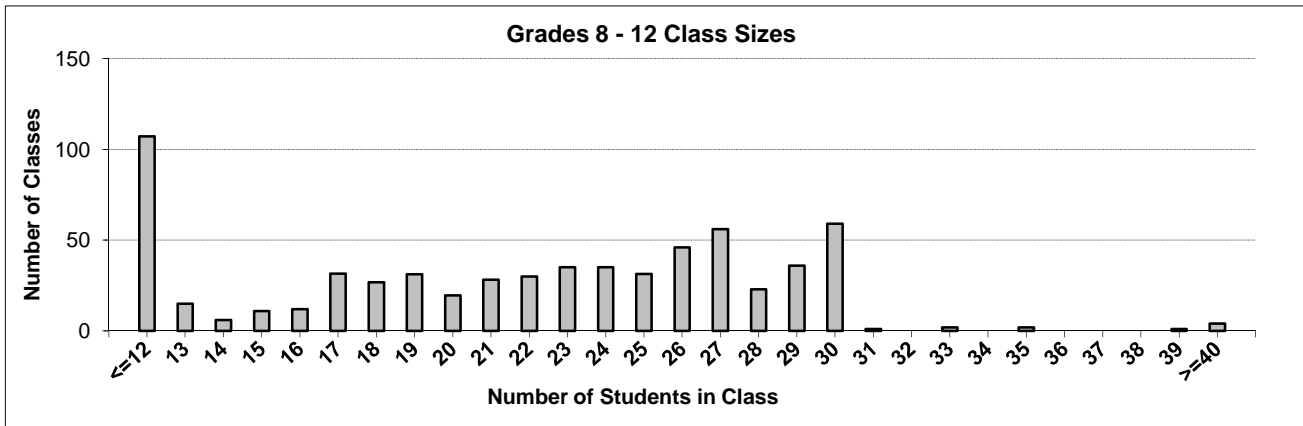
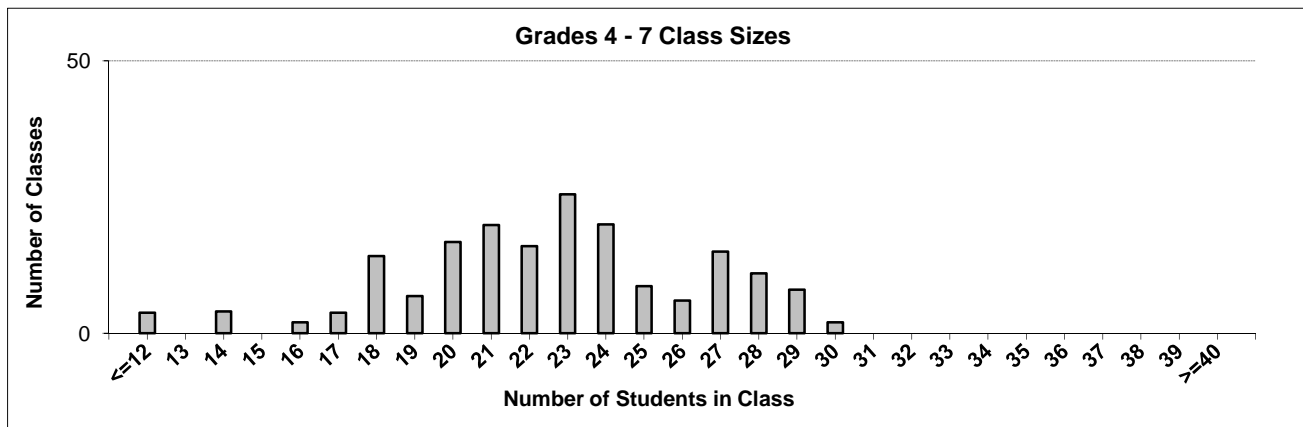
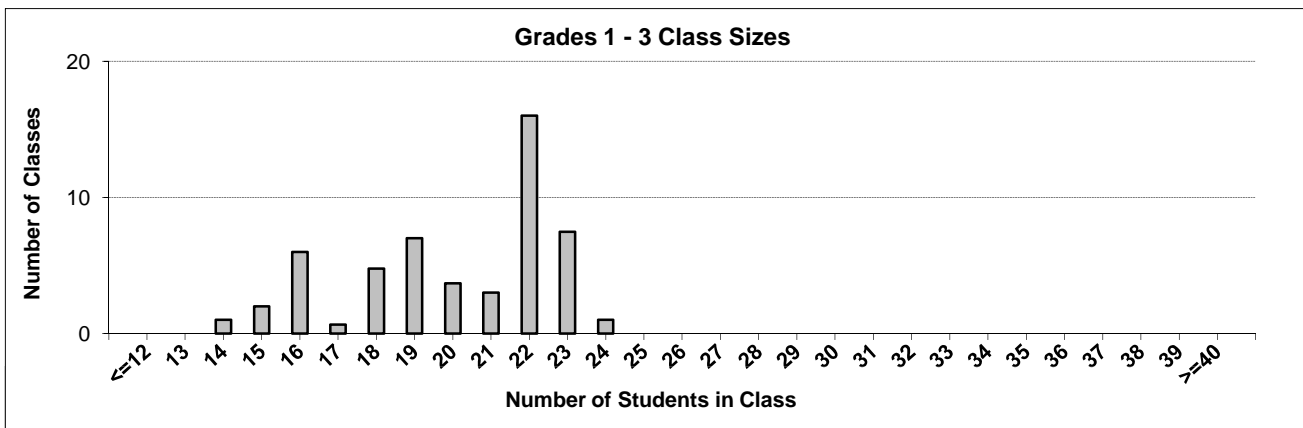
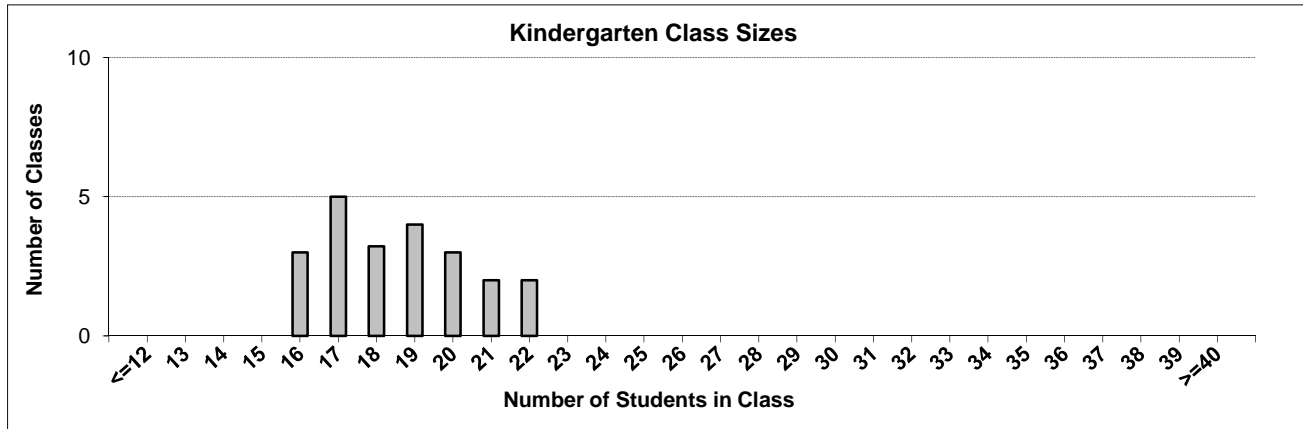
Contact the Information Department at [educ.reportingunit@gov.bc.ca](mailto:educ.reportingunit@gov.bc.ca)

---

# District Class Sizes

## 005 Southeast Kootenay

Source: Class size data collection (as of September 30) from standard BC public schools.



---

## District - Average Class Size

---

### 005 Southeast Kootenay

Source: Class size data collection (as of September 30) from standard BC public schools.

District - Average Class Size	Kindergarten	Grade 1 - 3	Grade 4 - 7	Grade 8 - 12
	18.6	20.1	22.5	20.7

Province - Average Class Size	Kindergarten	Grade 1 - 3	Grade 4 - 7	Grade 8 - 12
	18.5	20.6	25.9	25.0

Number of Reported Classes with Assigned Education Assistants	283
---	-----

Number of Reported Schools in District	17
--	----

Number of Reported Classes in District	908
--	-----

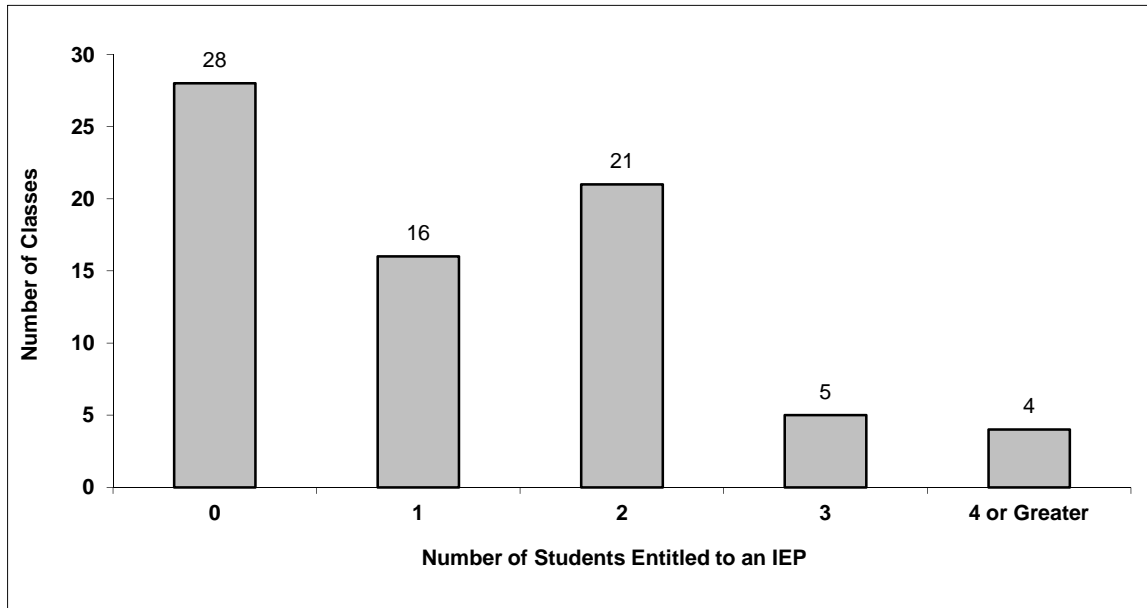
Number of Reported Classes in District with more than 30 Students	10
---	----

# District - Students Entitled to an Individual Education Plan (IEP)

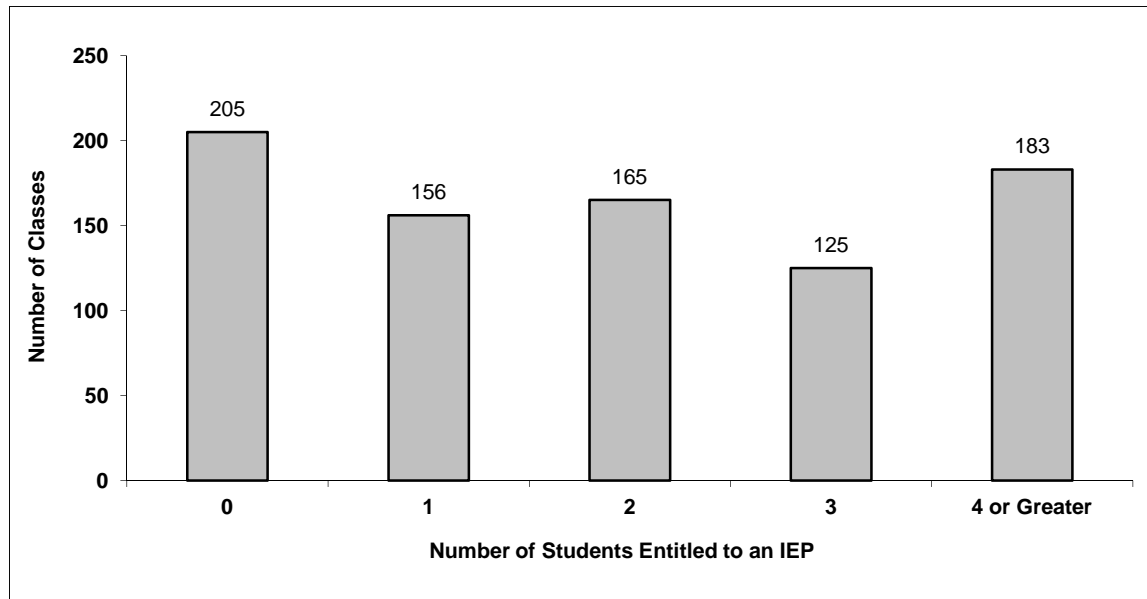
## 005 Southeast Kootenay

Source: Class size data collection (as of September 30) from standard BC public schools.

### Grades K-3 - Number of Classes in District with 'X' Number of Students Entitled to an IEP



### Grades 4-12 - Number of Classes in District with 'X' Number of Students Entitled to an IEP

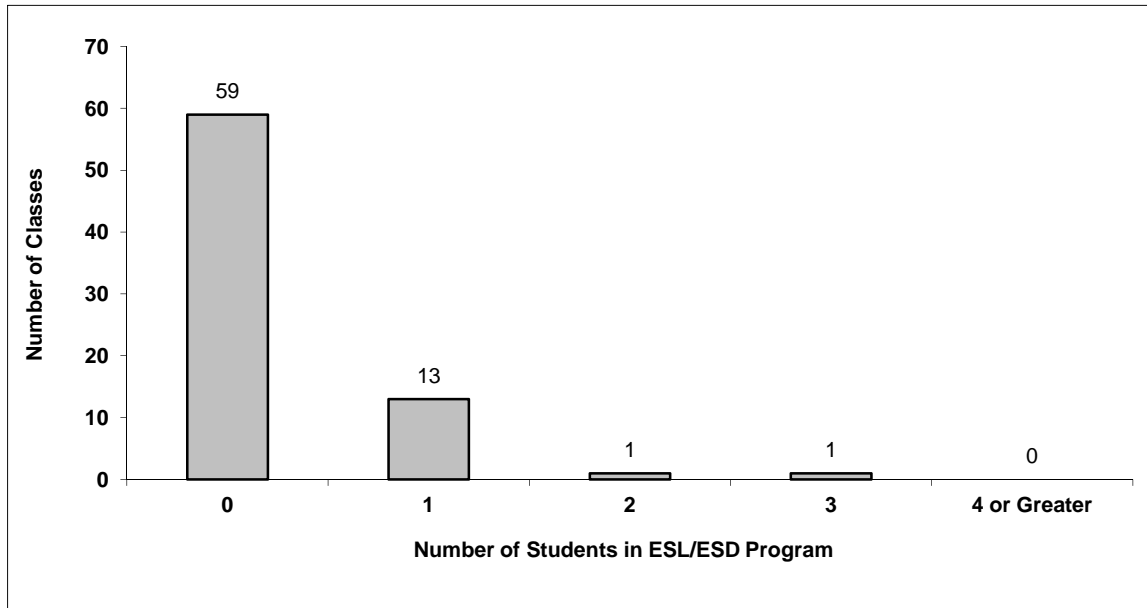


# District - Students in English as a Second Language/Dialect (ESL/ESD) Program

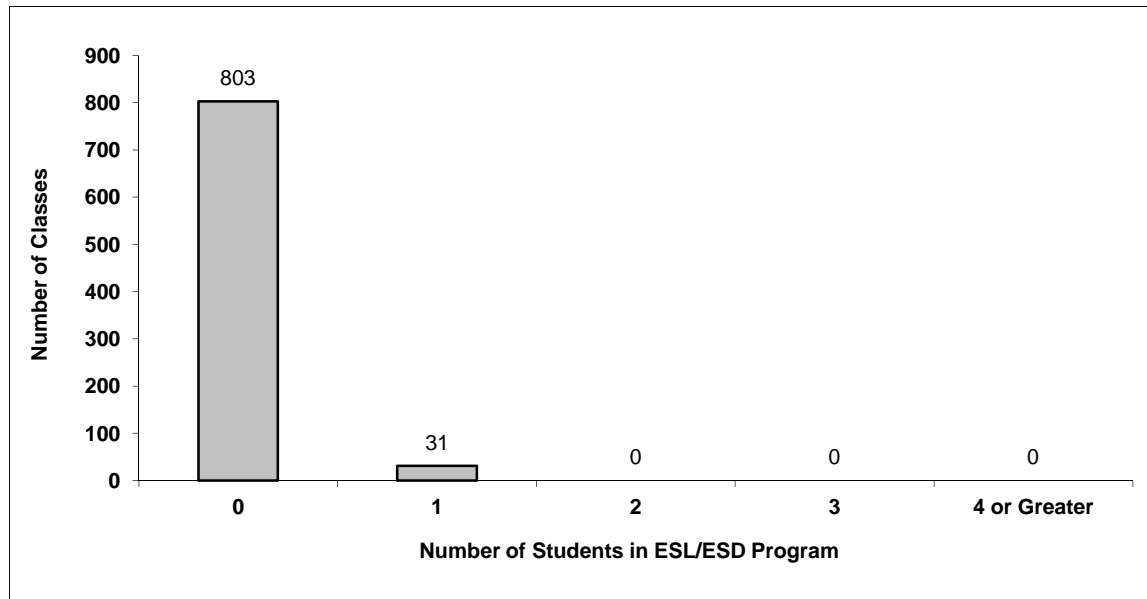
## 005 Southeast Kootenay

Source: Class size data collection (as of September 30) from standard BC public schools.

Grades K-3 - Number of Classes in District with 'X' Number of Students in ESL/ESD Program



Grades 4-12 - Number of Classes in District with 'X' Number of Students in ESL/ESD Program



## 005 Southeast Kootenay - Average Class Size by School

Source: Class size data collection (as of September 30) from standard BC public schools.

Ministry Code	School Name	Kindergarten	Grade 1 - 3	Grade 4 - 7	Grade 8 - 12
00502023	Amy Woodland Elementary	21.0	17.8	24.8	-
00505033	Elkford Elementary Secondary	-	-	17.1	13.2
00505034	Fernie Secondary	-	-	21.1	17.9
00501010	Frank J Mitchell Elementary	20.0	20.0	22.8	-
00502028	Gordon Terrace Elementary	17.5	22.8	27.2	-
00502029	Highlands Elementary	18.0	22.0	25.3	-
00501009	Isabella Dicken Elementary	17.3	22.1	24.5	-
00501007	Jaffray Elem-Jr Secondary	16.0	18.6	18.7	12.7
00502032	Kootenay Orchards Elementary	16.5	21.2	26.0	-
00502011	Laurie Middle School	-	-	21.6	21.9
00502001	Mount Baker Secondary	-	-	-	24.1
00505018	Parkland Middle School	-	-	24.8	25.7
00502030	Pinewood Elementary	21.0	18.3	26.5	-
00501017	Rocky Mountain Elementary	18.5	17.8	25.8	-
00505035	Sparwood Secondary	-	-	21.4	18.9
00502031	Steeples Elementary	22.0	17.3	20.9	-
00502024	T M Roberts Elementary	18.3	20.3	23.6	-

## Glossary

Term	Definition / Notes
<b>English as a Second Language/Dialect (ESL/ESD) Program</b>	<ul style="list-style-type: none"> <li>• A program offered to students whose primary language(s) is/are other than English, and who may require additional services.</li> </ul>
<b>Grade</b>	<ul style="list-style-type: none"> <li>• The assigned grade of a student on September 30.</li> </ul>
<b>KH</b>	<ul style="list-style-type: none"> <li>• Kindergarten half-time</li> </ul>
<b>KF</b>	<ul style="list-style-type: none"> <li>• Kindergarten full-time</li> </ul>
<b>Number of Students</b>	<ul style="list-style-type: none"> <li>• Student population is calculated by headcount.</li> </ul>
<b>Student</b>	<ul style="list-style-type: none"> <li>• A person enrolled in a BC school. Student populations are calculated by headcount. Students include all adult and school-aged persons who are working toward a certificate of graduation.</li> </ul>
<b>Student Entitled to an Individual Education Plan</b>	<ul style="list-style-type: none"> <li>• A student for whom an Individual Education Plan (IEP) must be designed under the Individual Education Plan order, Ministerial Order 638/95.</li> </ul>



## District - Rationales for Classes with More Than 30 Students

### 005 - Southeast Kootenay

Source: Class size data collection (as of September 30) from standard BC public schools.

Under the *School Act* whenever a class in grades 4 to 12 exceeds 30 students, the principal and the superintendent must confirm that in their opinion, the learning conditions in that classroom are appropriate for the students. In addition, the principal must state the reasons or rationale for that class exceeding 30 students. If parents have questions regarding the information in this report, they should contact the school principal.

Ministry Code	School Name	Division/Class	No. of Students	Rationale
00502001	Mount Baker Secondary	MUSIC 10: CONCERT BAND (01)	47	Music class is a suitable candidate for larger class size.
00502001	Mount Baker Secondary	MUSIC CONCERT CHOIR	51	Music is an appropriate class to extend. Teacher has requested class extension beyond class size limits.
00502001	Mount Baker Secondary	MUSIC CC 11/12	39	Music is an appropriate class to extend. Teacher has requested extension of class size.
00502011	Laurie Middle School	MUSIC 8 (02)	33	Teacher Approved.
00502011	Laurie Middle School	HOME ECONOMICS 9 (01)	31	Teacher approved. EA support in place.
00505018	Parkland Middle School	MUSIC 8 (01)	33	Teacher wants all Band students together.
00505018	Parkland Middle School	MUSIC 8 (02)	46	Teacher wants all band students together.
00505018	Parkland Middle School	MUSIC 9 (01)	47	Teacher wants all Band students together.
00505033	Elkford Elementary Secondary	DAILY PHYSICAL ACTIVITY 8 (01)	35	Teacher has requested this class.
00505033	Elkford Elementary Secondary	HEALTH AND CAREER EDUCATION 08 (01)	35	Teacher has requested this class.