

Overview of Class Size and Composition in British Columbia Public Schools 2010/11

School District 070 Alberni

These class size data are current as of September 30, 2010 and have been verified by school districts.

PLEASE NOTE

The Ministry makes small and continuous improvements to the quality of its data. Sometimes these changes result in differences from previously published reports. The data in this report are the most accurate data available at time of publication.

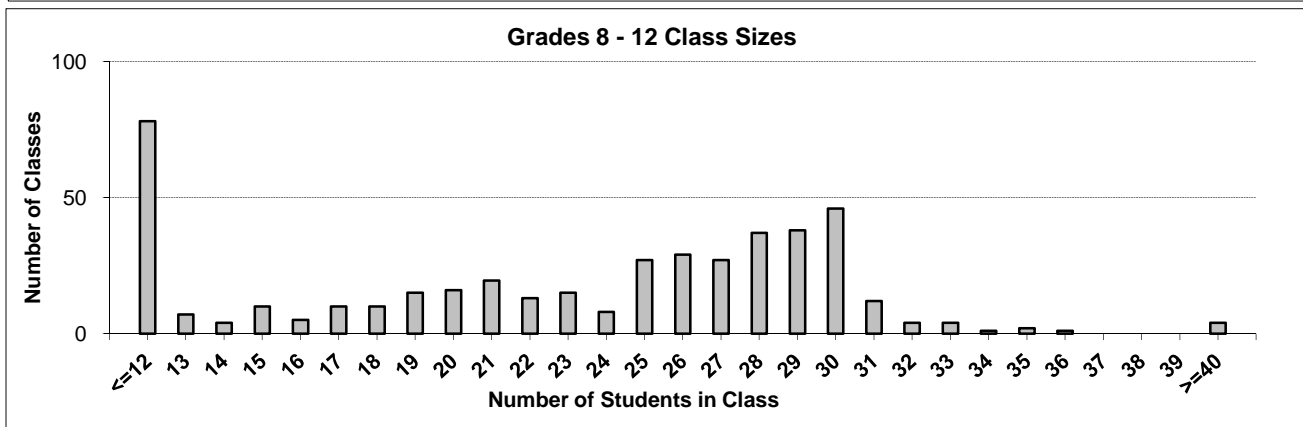
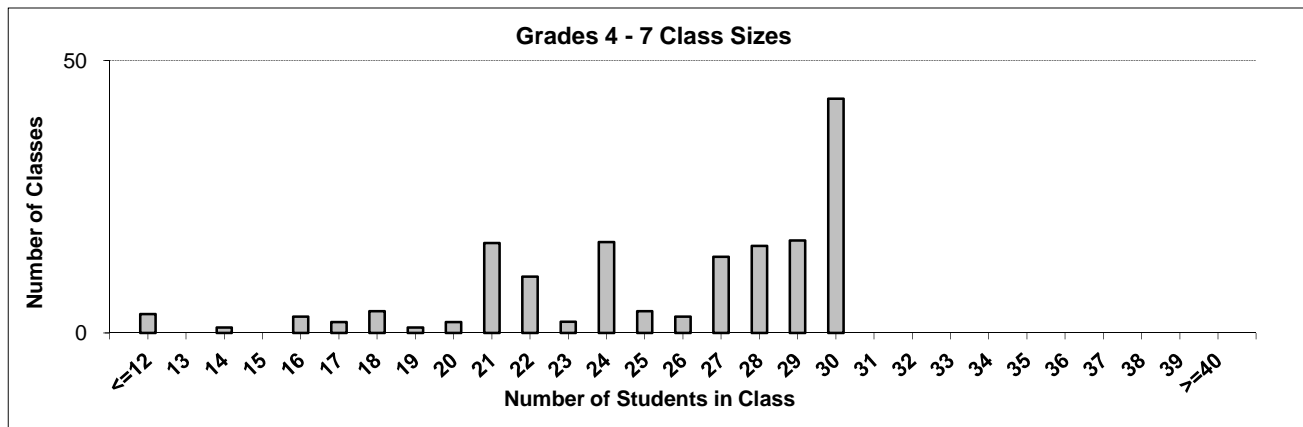
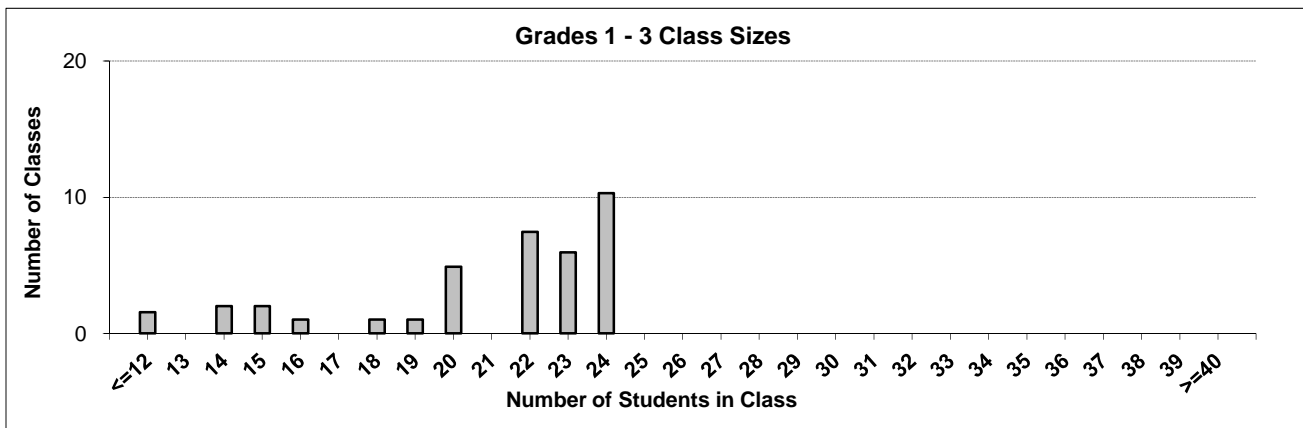
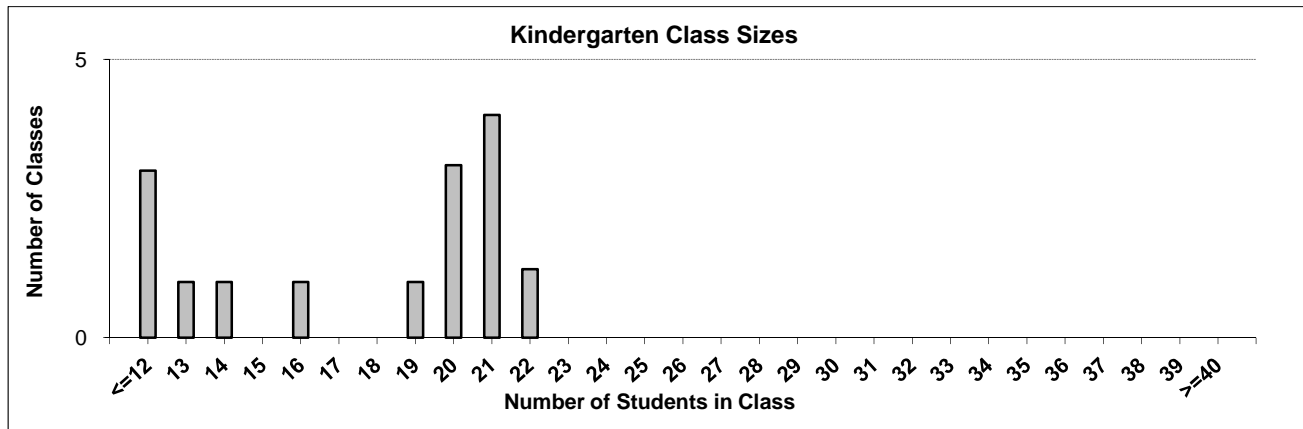
Ministry reports are available at <http://www.bced.gov.bc.ca/reporting/>

Contact the Information Department at educ.reportingunit@gov.bc.ca

District Class Sizes

070 Alberni

Source: Class size data collection (as of September 30) from standard BC public schools.



District - Average Class Size

070 Alberni

Source: Class size data collection (as of September 30) from standard BC public schools.

District - Average Class Size	Kindergarten	Grade 1 - 3	Grade 4 - 7	Grade 8 - 12
	17.1	20.7	25.5	22.2

Province - Average Class Size	Kindergarten	Grade 1 - 3	Grade 4 - 7	Grade 8 - 12
	18.3	20.7	25.9	25.1

Number of Reported Classes with Assigned Education Assistants	147
---	-----

Number of Reported Schools in District	13
--	----

Number of Reported Classes in District	654
--	-----

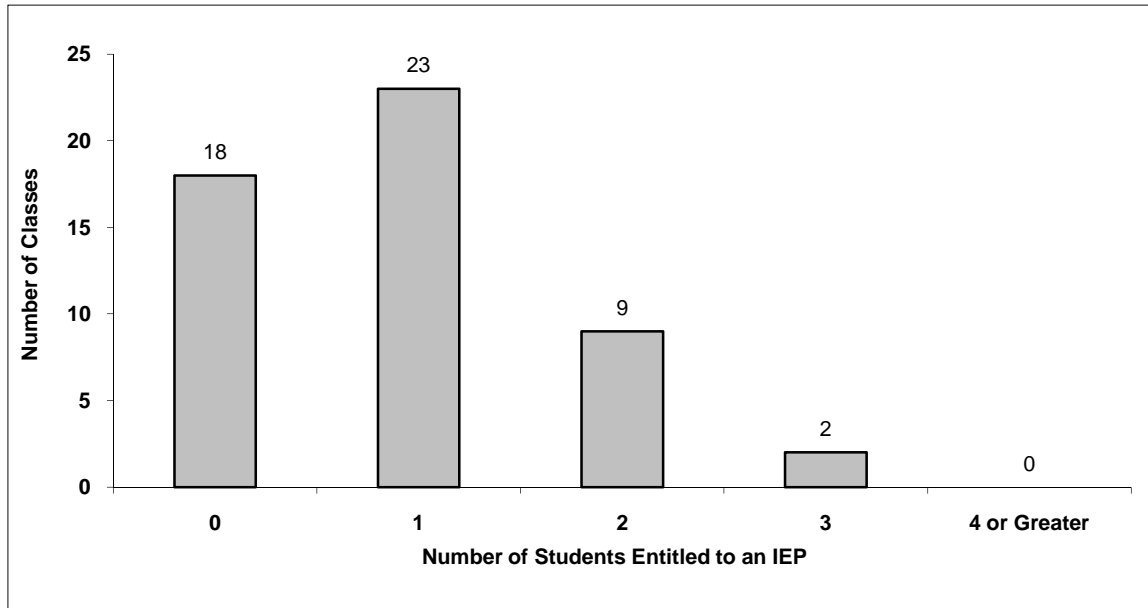
Number of Reported Classes in District with more than 30 Students	28
---	----

District - Students Entitled to an Individual Education Plan (IEP)

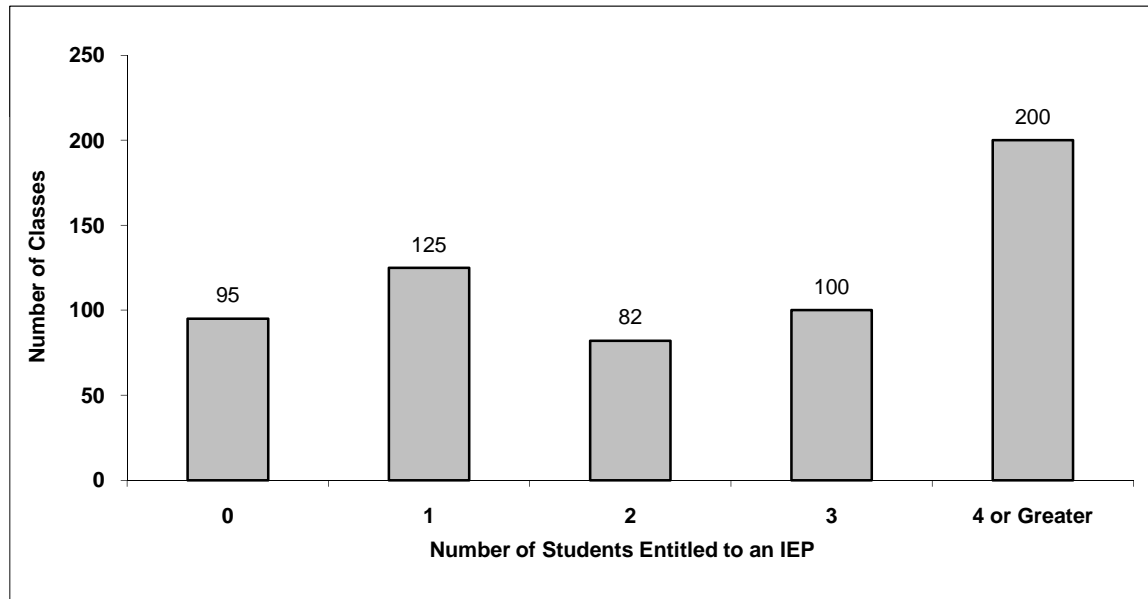
070 Alberni

Source: Class size data collection (as of September 30) from standard BC public schools.

Grades K-3 - Number of Classes in District with 'X' Number of Students Entitled to an IEP



Grades 4-12 - Number of Classes in District with 'X' Number of Students Entitled to an IEP

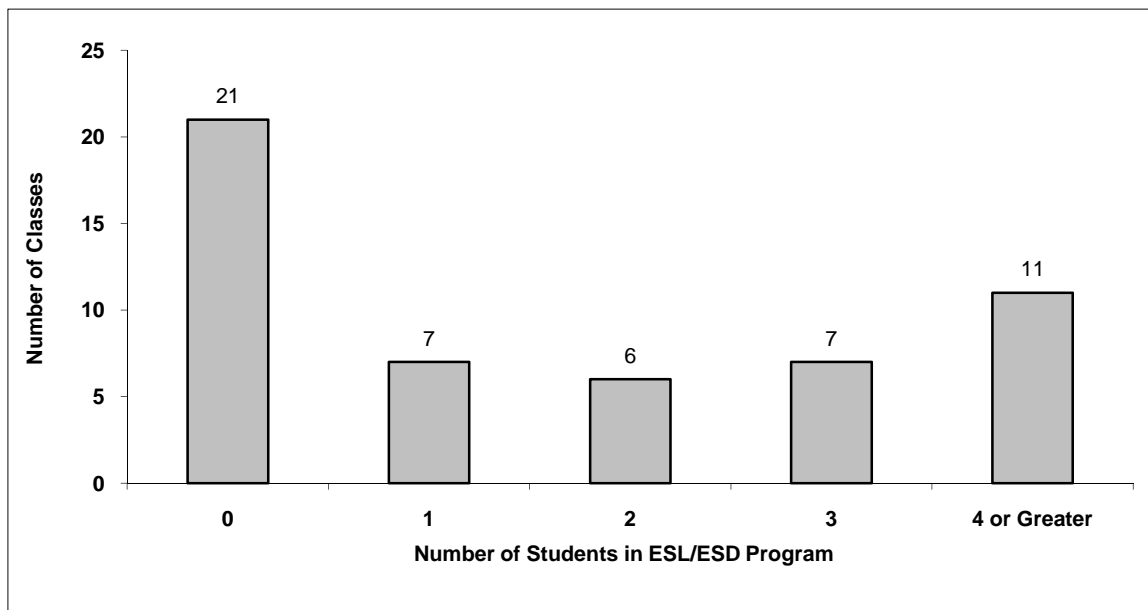


District - Students in English as a Second Language/Dialect (ESL/ESD) Program

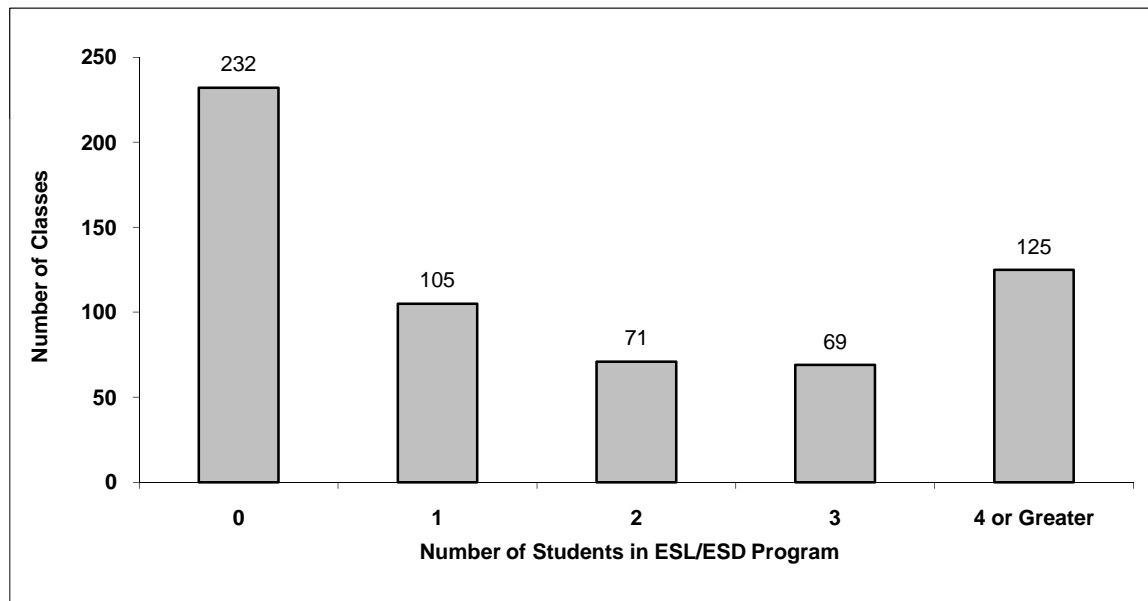
070 Alberni

Source: Class size data collection (as of September 30) from standard BC public schools.

Grades K-3 - Number of Classes in District with 'X' Number of Students in ESL/ESD Program



Grades 4-12 - Number of Classes in District with 'X' Number of Students in ESL/ESD Program



070 Alberni - Average Class Size by School

Source: Class size data collection (as of September 30) from standard BC public schools.

Ministry Code	School Name	Kindergarten	Grade 1 - 3	Grade 4 - 7	Grade 8 - 12
07070004	A W Neill Middle School	-	-	28.8	26.0
07070001	Alberni District Secondary	-	-	-	23.1
07070006	Alberni Elementary	20.0	19.7	24.1	-
07070027	Bamfield Community School	-	9.0	9.0	-
07070011	Eighth Avenue Elementary	13.5	23.1	29.9	-
07070002	Eric J Dunn Middle School	-	-	23.5	25.0
07070014	Gill Elementary	17.5	23.0	24.3	-
07070018	John Howitt Elementary	17.0	23.2	28.4	-
07070020	Maquinna Elementary	15.5	19.2	29.0	-
07070026	Ucluelet Elementary	16.0	20.5	19.7	-
07070005	Ucluelet Secondary	-	-	-	15.8
07070024	Wickaninnish Community School	21.8	19.3	21.7	-
07070025	Wood Elementary	16.0	19.7	25.3	-

Glossary

Term	Definition / Notes
English as a Second Language/Dialect (ESL/ESD) Program	<ul style="list-style-type: none"> • A program offered to students whose primary language(s) is/are other than English, and who may require additional services.
Grade	<ul style="list-style-type: none"> • The assigned grade of a student on September 30.
KH	<ul style="list-style-type: none"> • Kindergarten half-time
KF	<ul style="list-style-type: none"> • Kindergarten full-time
Number of Students	<ul style="list-style-type: none"> • Student population is calculated by headcount.
Student	<ul style="list-style-type: none"> • A person enrolled in a BC school. Student populations are calculated by headcount. Students include all adult and school-aged persons who are working toward a certificate of graduation.
Student Entitled to an Individual Education Plan	<ul style="list-style-type: none"> • A student for whom an Individual Education Plan (IEP) must be designed under the Individual Education Plan order, Ministerial Order 638/95.

District - Rationales for Classes with More Than 30 Students

070 - Alberni

Source: Class size data collection (as of September 30) from standard BC public schools.

Under the *School Act* whenever a class in grades 4 to 12 exceeds 30 students, the principal and the superintendent must confirm that in their opinion, the learning conditions in that classroom are appropriate for the students. In addition, the principal must state the reasons or rationale for that class exceeding 30 students. If parents have questions regarding the information in this report, they should contact the school principal.

Ministry Code	School Name	Division/Class	No. of Students	Rationale
07070001	Alberni District Secondary	CHEMISTRY 11 (01)	33	With permission of teacher
07070001	Alberni District Secondary	CHEMISTRY 11 (02)	31	With permission of teacher
07070001	Alberni District Secondary	COMPARATIVE CIVILIZATIONS 12 (01)	31	With agreement of teacher
07070001	Alberni District Secondary	ENGLISH 11 (07)	31	With permission of teacher
07070001	Alberni District Secondary	ENGLISH 12 (01)	32	With permission of teacher
07070001	Alberni District Secondary	ENGLISH 12 (07)	32	With permission of teacher
07070001	Alberni District Secondary	ENGLISH LANGUAGE ARTS 9 (06)	31	With permission of teacher
07070001	Alberni District Secondary	GRADUATION TRANSITIONS (02)	75	Graduation Transitions is suited to a larger class size
07070001	Alberni District Secondary	INSTRUMENTAL MUSIC 11: CONCERT BAND (01)	35	Band format is suited to larger classes
07070001	Alberni District Secondary	INSTRUMENTAL MUSIC 11: JAZZ BAND (01), INSTRUMENTAL MUSIC 12: JAZZ BAND (01)	36	Band format is suited to larger classes
07070001	Alberni District Secondary	LD BAND 9 (01)	35	Band format is suited to larger classes
07070001	Alberni District Secondary	LD BAND 9 (02)	33	Band class is suitable candidate for a larger class size
07070001	Alberni District Secondary	MATHEMATICS 9 (08)	31	with permission of teacher
07070001	Alberni District Secondary	MUSIC 10: CONCERT BAND (02)	43	Band format is suited to larger classes
07070001	Alberni District Secondary	MUSIC 10: JAZZ BAND (01), MUSIC 9 (01)	66	Band class is suitable candidate for a larger class size
07070001	Alberni District Secondary	PHYSICAL EDUCATION 10 (03)	31	Physical Education is suited to larger classes
07070001	Alberni District Secondary	PHYSICAL EDUCATION 9 (02)	33	Physical education class is suitable candidate for a larger class size
07070001	Alberni District Secondary	PHYSICAL EDUCATION 9 (03)	31	Physical Education is suitable candidate for a larger class size
07070001	Alberni District Secondary	PHYSICS 11 (02)	31	With agreement of teacher
07070001	Alberni District Secondary	PHYSICS 12 (01)	31	With agreement of teacher
07070001	Alberni District Secondary	SCIENCE & TECHNOLOGY 11 (02)	31	With permission of teacher
07070001	Alberni District Secondary	SCIENCE 10 (03)	31	With permission of teacher

District - Rationales for Classes with More Than 30 Students

070 - Alberni

Source: Class size data collection (as of September 30) from standard BC public schools.

Under the *School Act* whenever a class in grades 4 to 12 exceeds 30 students, the principal and the superintendent must confirm that in their opinion, the learning conditions in that classroom are appropriate for the students. In addition, the principal must state the reasons or rationale for that class exceeding 30 students. If parents have questions regarding the information in this report, they should contact the school principal.

Ministry Code	School Name	Division/Class	No. of Students	Rationale
07070001	Alberni District Secondary	STUDIO ARTS 11: CERAMICS AND SCULPTURE (01), STUDIO ARTS 12: CERAMICS AND SCULPT	34	Studio arts class is suitable candidate for a larger class size
07070001	Alberni District Secondary	STUDIO ARTS 11: DRAWING AND PAINTING (01), STUDIO ARTS 12: DRAWING AND PAINTING	32	With permission of teacher
07070001	Alberni District Secondary	WORK EXPERIENCE 12A (01)	84	Work experience format is suited to larger classes
07070001	Alberni District Secondary	WORK EXPERIENCE 12A (04), WORK EXPERIENCE 12B (02)	33	Work experience format is suited to larger classes
07070005	Ucluelet Secondary	FOUNDATIONS OF MATH AND PRE-CALCULUS 10 (1B)	31	After reviewing the class list with the teacher it was felt that this is appropriate in size and composition for an academic class with very few IEP students.
07070005	Ucluelet Secondary	PHYSICAL EDUCATION 10 (1C), PHYSICAL EDUCATION 11 (1C), PHYSICAL EDUCATION 12 (1)	32	The PE teacher feels this is an appropriate size for this class.