

Overview of Class Size and Composition in British Columbia Public Schools 2010/11

School District 033 Chilliwack

These class size data are current as of September 30, 2010 and have been verified by school districts.

PLEASE NOTE

The Ministry makes small and continuous improvements to the quality of its data. Sometimes these changes result in differences from previously published reports. The data in this report are the most accurate data available at time of publication.

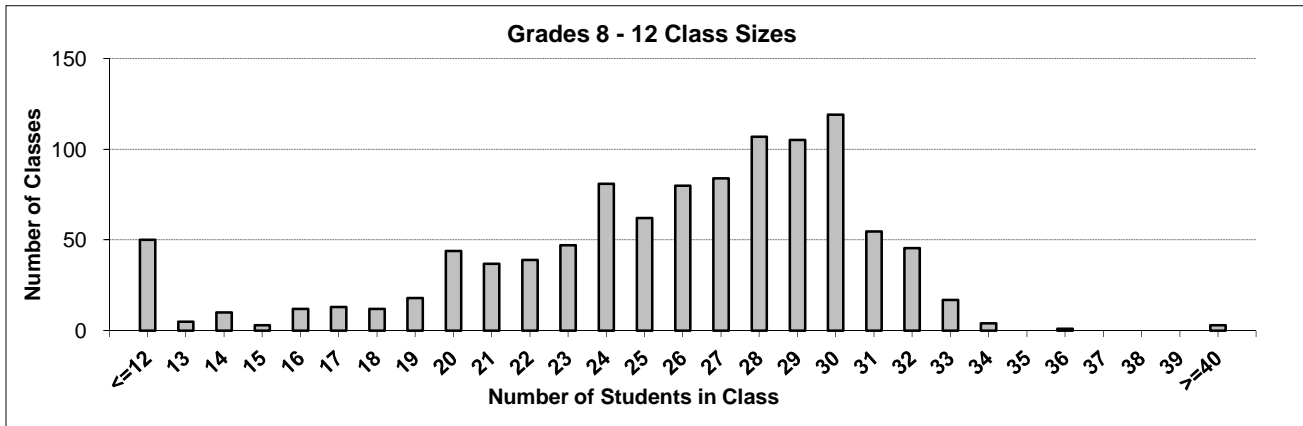
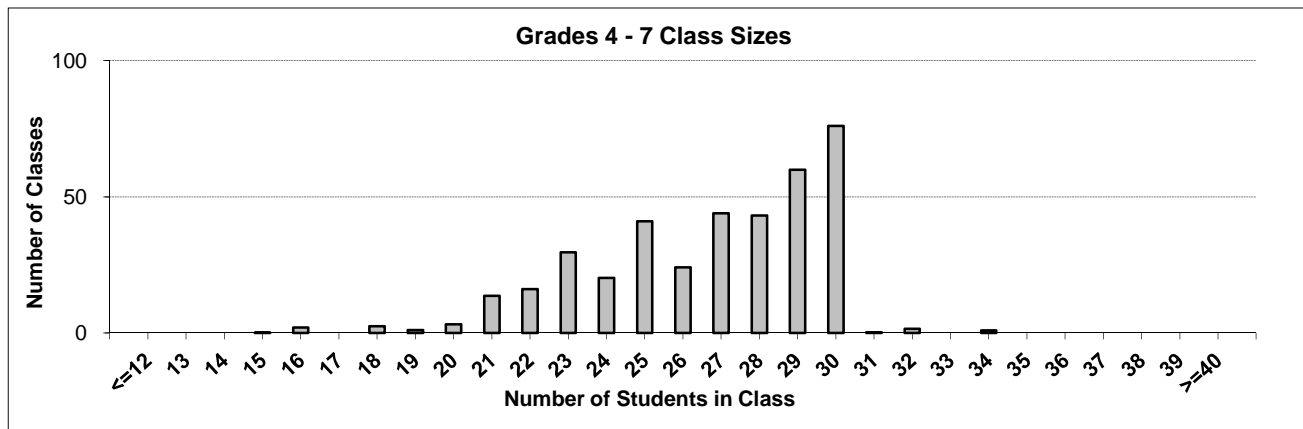
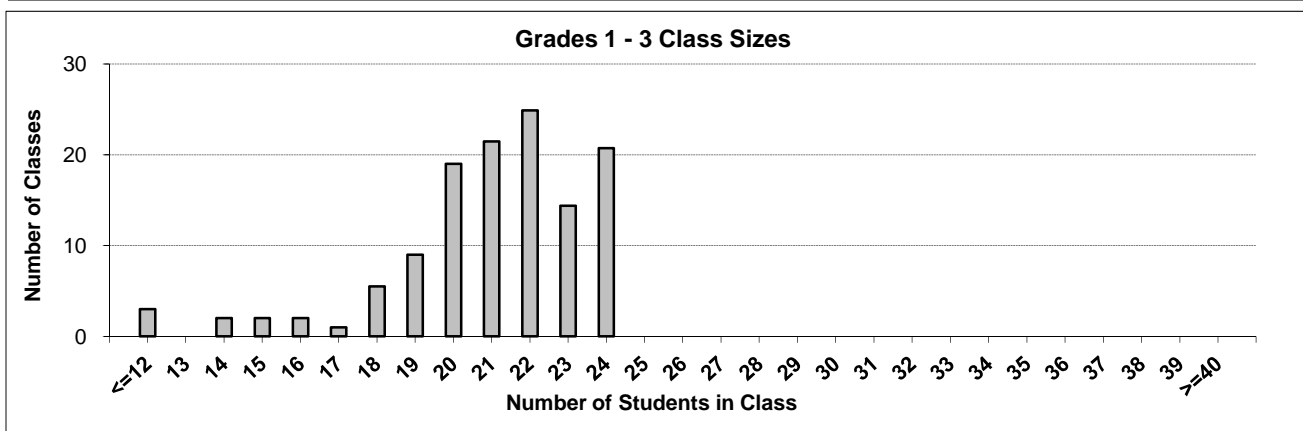
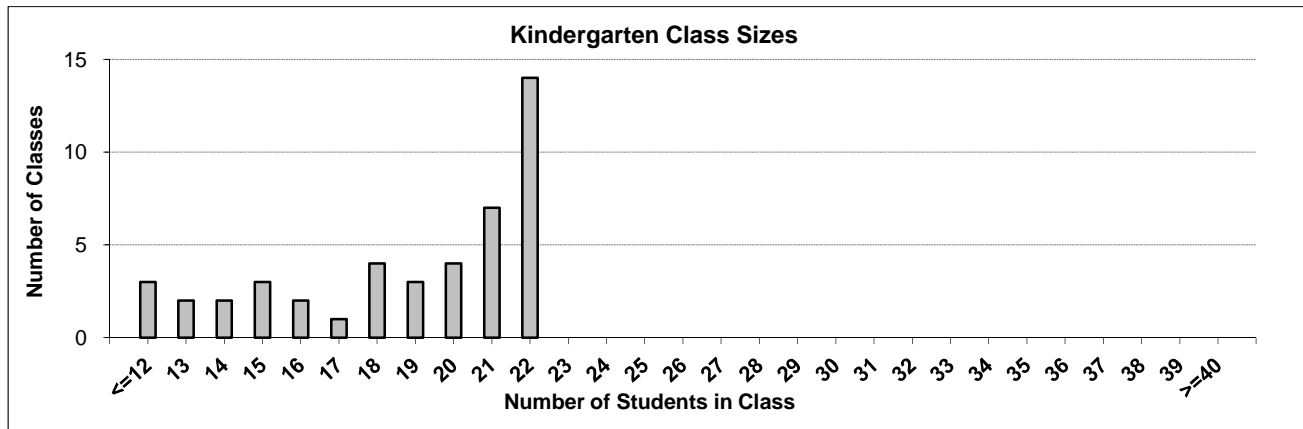
Ministry reports are available at <http://www.bced.gov.bc.ca/reporting/>

Contact the Information Department at educ.reportingunit@gov.bc.ca

District Class Sizes

033 Chilliwack

Source: Class size data collection (as of September 30) from standard BC public schools.



District - Average Class Size

033 Chilliwack

Source: Class size data collection (as of September 30) from standard BC public schools.

District - Average Class Size	Kindergarten	Grade 1 - 3	Grade 4 - 7	Grade 8 - 12
	18.6	21.0	26.7	25.3

Province - Average Class Size	Kindergarten	Grade 1 - 3	Grade 4 - 7	Grade 8 - 12
	18.3	20.7	25.9	25.1

Number of Reported Classes with Assigned Education Assistants	356
---	-----

Number of Reported Schools in District	28
--	----

Number of Reported Classes in District	1,602
--	-------

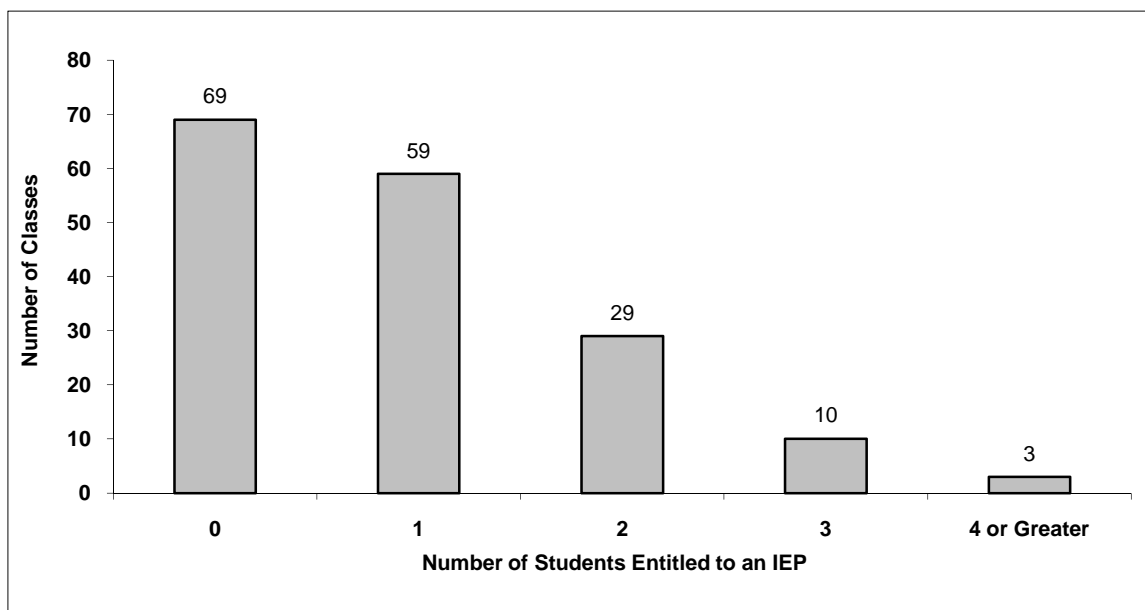
Number of Reported Classes in District with more than 30 Students	128
---	-----

District - Students Entitled to an Individual Education Plan (IEP)

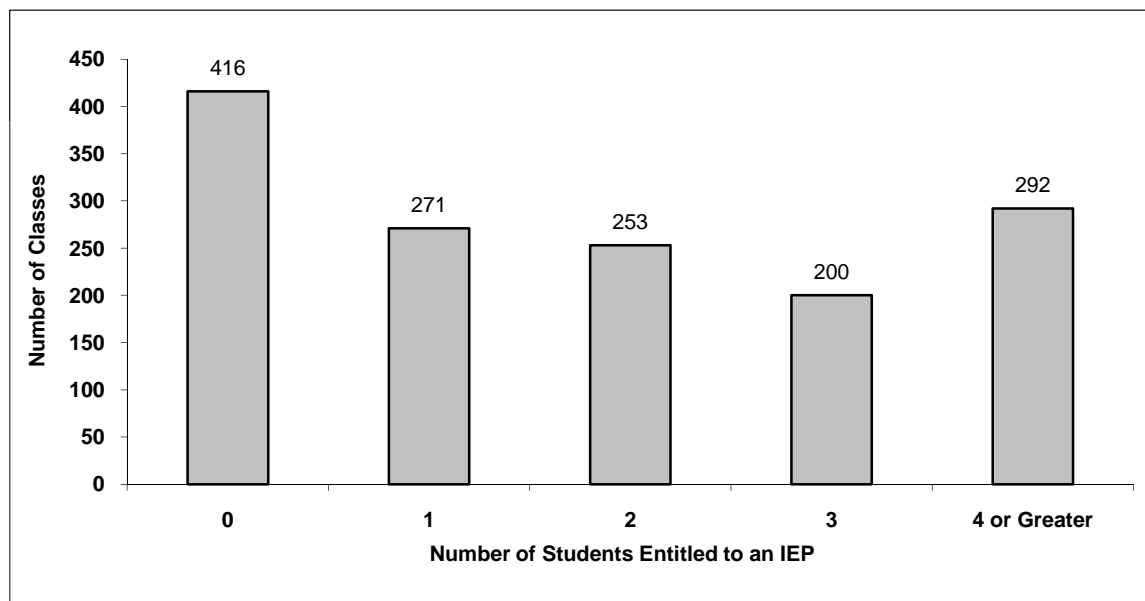
033 Chilliwack

Source: Class size data collection (as of September 30) from standard BC public schools.

Grades K-3 - Number of Classes in District with 'X' Number of Students Entitled to an IEP



Grades 4-12 - Number of Classes in District with 'X' Number of Students Entitled to an IEP

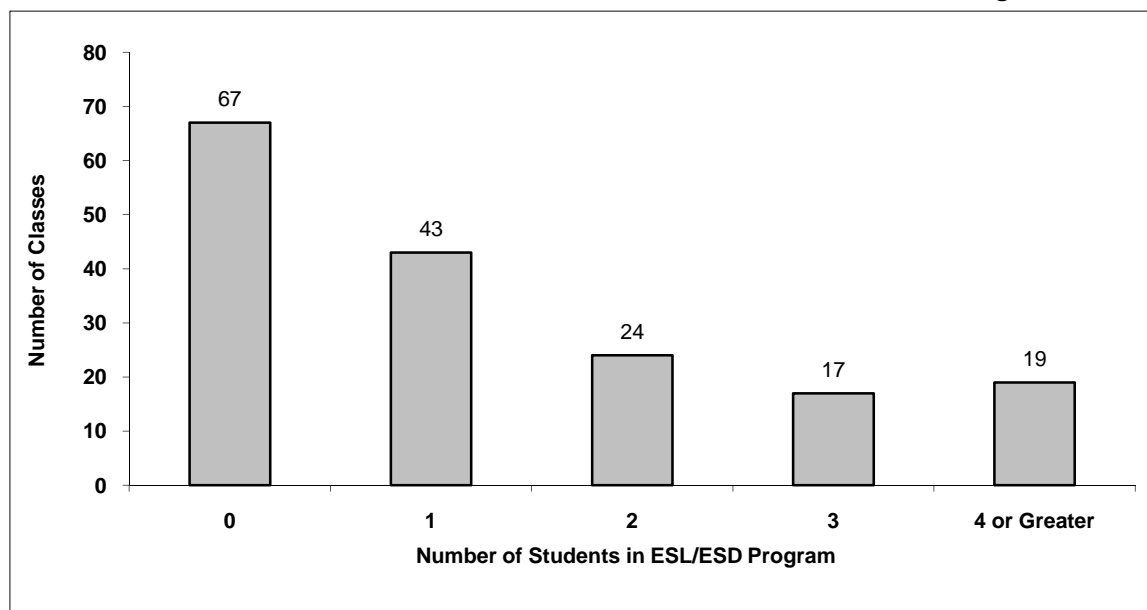


District - Students in English as a Second Language/Dialect (ESL/ESD) Program

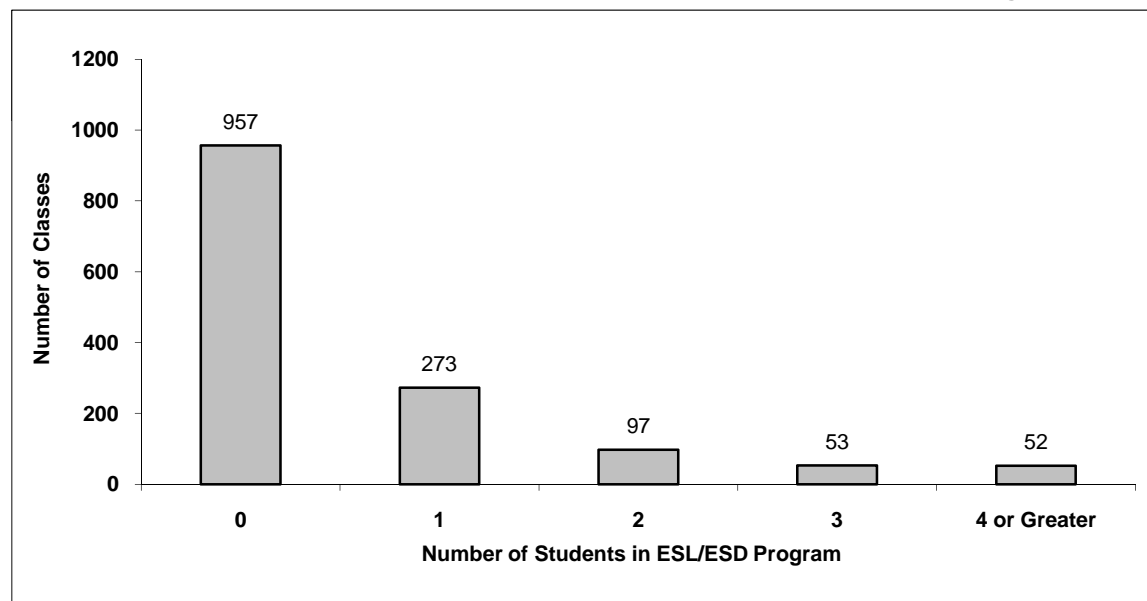
033 Chilliwack

Source: Class size data collection (as of September 30) from standard BC public schools.

Grades K-3 - Number of Classes in District with 'X' Number of Students in ESL/ESD Program



Grades 4-12 - Number of Classes in District with 'X' Number of Students in ESL/ESD Program



033 Chilliwack - Average Class Size by School

Source: Class size data collection (as of September 30) from standard BC public schools.

Ministry Code	School Name	Kindergarten	Grade 1 - 3	Grade 4 - 7	Grade 8 - 12
03333033	A D Rundle Middle School	-	-	25.4	23.9
03333019	Bernard Elementary	18.5	19.2	27.3	-
03333013	Cheam Elementary	16.0	20.6	29.0	-
03333008	Chilliwack Central Elementary Community	14.0	17.8	26.0	-
03333004	Chilliwack Middle School	-	-	27.3	26.4
03333012	Chilliwack Secondary	-	-	-	25.5
03333009	Cultus Lake Community School	21.0	21.0	25.7	-
03333010	East Chilliwack Elementary	14.0	21.0	29.3	-
03333039	Evans Elementary	21.5	22.0	28.2	-
03333030	F G Leary Fine Arts Elementary	21.0	24.0	28.8	-
03333043	GW Graham Middle Secondary	-	-	28.6	22.8
03333042	Greendale Elementary	20.0	18.3	25.2	-
03333016	Little Mountain Elementary	21.7	22.9	27.6	-
03333028	McCammon Traditional Elementary	15.5	19.2	28.3	-
03333038	Mount Slesse Middle School	-	-	24.5	25.5
03333040	Promontory Heights Community Elementary	22.0	21.9	28.0	-
03333024	Robertson Elementary	20.5	19.6	25.3	-
03333001	Rosedale Elementary	21.0	21.0	23.3	-
03333023	Rosedale Traditional Middle School	-	-	29.0	26.8
03333005	Sardis Elementary	20.0	21.3	29.4	-
03333018	Sardis Secondary	-	-	-	26.3
03333003	Strathcona Elementary	17.7	21.4	28.6	-
03333035	Tyson Elementary	11.5	23.8	29.0	-
03333029	Unsworth Elementary	18.3	22.2	26.2	-
03333011	Vedder Elementary	22.0	20.3	28.4	-
03333034	Vedder Middle School	-	-	25.9	25.5
03333017	Watson Elementary	22.0	20.7	28.0	-
03333015	Yarrow Community School	14.5	18.8	29.8	-

Glossary

Term	Definition / Notes
English as a Second Language/Dialect (ESL/ESD) Program	<ul style="list-style-type: none"> • A program offered to students whose primary language(s) is/are other than English, and who may require additional services.
Grade	<ul style="list-style-type: none"> • The assigned grade of a student on September 30.
KH	<ul style="list-style-type: none"> • Kindergarten half-time
KF	<ul style="list-style-type: none"> • Kindergarten full-time
Number of Students	<ul style="list-style-type: none"> • Student population is calculated by headcount.
Student	<ul style="list-style-type: none"> • A person enrolled in a BC school. Student populations are calculated by headcount. Students include all adult and school-aged persons who are working toward a certificate of graduation.
Student Entitled to an Individual Education Plan	<ul style="list-style-type: none"> • A student for whom an Individual Education Plan (IEP) must be designed under the Individual Education Plan order, Ministerial Order 638/95.

District - Rationales for Classes with More Than 30 Students

033 -Chilliwack

Source: Class size data collection (as of September 30) from standard BC public schools.

Under the *School Act* whenever a class in grades 4 to 12 exceeds 30 students, the principal and the superintendent must confirm that in their opinion, the learning conditions in that classroom are appropriate for the students. In addition, the principal must state the reasons or rationale for that class exceeding 30 students. If parents have questions regarding the information in this report, they should contact the school principal.

Ministry Code	School Name	Division/Class	No. of Students	Rationale
03333004	Chilliwack Middle School	FFRAL08 - FRANÇAIS LANGUE SECONDE-IMMERSION 8 (01)	32	This is the best learning situation for a single group of French Immersion students.
03333004	Chilliwack Middle School	FMTHF08 - MATHÉMATIQUES 8 (01)	32	This is the best learning situation for a single group of French Immersion students
03333004	Chilliwack Middle School	FSCF-08 - SCIENCES 8 (01)	32	This is the best learning situation for a single group of French Immersion students
03333004	Chilliwack Middle School	FSCHF08 - SCIENCES HUMAINES 8 (01)	32	This is the best learning situation for a single group of French Immersion students
03333004	Chilliwack Middle School	MEN--08FR - ENGLISH LANGUAGE ARTS 8 (1)	32	This is the best learning situation for a single group of French Immersion students
03333004	Chilliwack Middle School	MPE--07B - PHYSICAL EDUCATION-Boys 7 (01), MPE-08B - PHYSICAL EDUCATION-Boys 8	32	Placement of students in this class supports the placement of other students within appropriate classes
03333004	Chilliwack Middle School	MPE--07B - PHYSICAL EDUCATION-Boys 7 (03)	32	Placement of students in this class supports the placement of other students within appropriate classes
03333004	Chilliwack Middle School	MPE--07HSA - Hockey Skills Academy 7 (01), MPE--08HSA - Hockey Skills Academy 8	31	This organization creates appropriate instructional groupings of students and maintains program integrity and sustainability
03333004	Chilliwack Middle School	MPE--08B - PHYSICAL EDUCATION- Boys 8 (02)	34	Placement of students in this class supports the placement of other students within appropriate classes
03333004	Chilliwack Middle School	MPE--08CO - PHYSICAL EDUCATION 8 CO-ED (01), MPE--08G - PHYSICAL EDUCATION-Girls	31	Placement of students in this class supports the placement of other students within appropriate classes
03333004	Chilliwack Middle School	MPE--08G - PHYSICAL EDUCATION-Girls 8 (02)	32	Placement of students in this class supports the placement of other students within the appropriate classes.
03333004	Chilliwack Middle School	MPE--09B - PHYSICAL EDUCATION 9 BOYS (03)	33	Placement of students in this class supports the placement of other students within appropriate classes
03333004	Chilliwack Middle School	MPE--09G - PHYSICAL EDUCATION 9 GIRLS (02)	31	Placement of students in this class supports the placement of other students within appropriate classes

District - Rationales for Classes with More Than 30 Students

033 -Chilliwack

Source: Class size data collection (as of September 30) from standard BC public schools.

Under the *School Act* whenever a class in grades 4 to 12 exceeds 30 students, the principal and the superintendent must confirm that in their opinion, the learning conditions in that classroom are appropriate for the students. In addition, the principal must state the reasons or rationale for that class exceeding 30 students. If parents have questions regarding the information in this report, they should contact the school principal.

Ministry Code	School Name	Division/Class	No. of Students	Rationale
03333004	Chilliwack Middle School	MPE--09G - PHYSICAL EDUCATION 9 GIRLS (04)	33	Placement of students in this class supports the placement of other students within appropriate classes
03333004	Chilliwack Middle School	MSC--09 - SCIENCE 9 (01)	31	Placement of students in this class supports the placement of other students within the appropriate classes
03333004	Chilliwack Middle School	MTE--08JW - Jewelry Design 8 (01)	31	Class size is required to accommodate student course changes
03333004	Chilliwack Middle School	XPT--09 - LD PEER TUTORING 9 (03), MPE--07B - PHYSICAL EDUCATION-Boys 7 (02)	34	Placement of students in this class supports the placement of other students within the appropriate classes.
03333012	Chilliwack Secondary	APPLICATIONS OF MATHEMATICS 11 (02)	31	This is a course students need as part of their graduation program and is organized to meet student program needs.
03333012	Chilliwack Secondary	BA PSYCHOLOGY 11A (01), HUMAN SERVICES 12C (14)	31	This class size includes a student tutor. This size is required to accommodate student course choice
03333012	Chilliwack Secondary	BA PSYCHOLOGY 11A (03), HUMAN SERVICES 12C (11), HUMAN SERVICES 12C (13)	33	This class size includes 2 student tutors. This size is required to accommodate student course choice
03333012	Chilliwack Secondary	BA PSYCHOLOGY 12A (01)	33	This size is required to accommodate student course choice
03333012	Chilliwack Secondary	BIOLOGY 11 (02), HUMAN SERVICES 12C (23)	31	This is a course students need as part of their graduation program and is organized to meet student program needs.
03333012	Chilliwack Secondary	CAFETERIA TRAINING 11 (02), CAFETERIA TRAINING 12 (02), PROFESSIONAL COOK 1 11A	31	This size is required to accommodate student course choice
03333012	Chilliwack Secondary	CHEMISTRY 11 (01)	31	This is a course students need as part of their graduation program and is organized to meet student program needs.
03333012	Chilliwack Secondary	COMMUNICATIONS 11 (01)	32	This is a course students need as part of their graduation program and is organized to meet student program needs.
03333012	Chilliwack Secondary	DRAFTING & DESIGN 11 (01), DRAFTING AND DESIGN (FNASK) 12 (01)	31	This size is required to accommodate student course choice

District - Rationales for Classes with More Than 30 Students

033 -Chilliwack

Source: Class size data collection (as of September 30) from standard BC public schools.

Under the *School Act* whenever a class in grades 4 to 12 exceeds 30 students, the principal and the superintendent must confirm that in their opinion, the learning conditions in that classroom are appropriate for the students. In addition, the principal must state the reasons or rationale for that class exceeding 30 students. If parents have questions regarding the information in this report, they should contact the school principal.

Ministry Code	School Name	Division/Class	No. of Students	Rationale
03333012	Chilliwack Secondary	DRAMA: FILM & TELEVISION 11 (01), DRAMA: FILM & TELEVISION 12 (01)	32	This size is required to accommodate student course choice
03333012	Chilliwack Secondary	ENGLISH 11 (01)	32	This is a course students need as part of their graduation program and is organized to meet student program needs.
03333012	Chilliwack Secondary	ENGLISH 11 (02)	31	This is a course students need as part of their graduation program and is organized to accommodate student program needs.
03333012	Chilliwack Secondary	ENTREPRENEURSHIP 12 (01)	32	This size is required to accommodate student course choice
03333012	Chilliwack Secondary	HUMAN SERVICES 11A (02), HUMAN SERVICES 12C (20), SCIENCE & TECHNOLOGY 11 (03)	33	This class size includes 2 student tutors. This is a course students need as part of their graduation program and is organized to meet student program needs.
03333012	Chilliwack Secondary	HUMAN SERVICES 12C (12), PRINCIPLES OF MATHEMATICS 11 (01)	34	This class size includes a student tutor. This is a course students need as part of their graduation program and is organized to meet student program needs.
03333012	Chilliwack Secondary	HUMAN SERVICES 12C (21), SCIENCE & TECHNOLOGY 11 (02)	31	This class size includes a student tutor. This is a course students need as part of their graduation program and is organized to meet student program needs.
03333012	Chilliwack Secondary	INSTRUMENTAL MUSIC 11: CONCERT BAND (01), INSTRUMENTAL MUSIC 12: CONCERT BAND (0)	32	This size is required to accommodate student course choice
03333012	Chilliwack Secondary	LAW 12 (02)	32	This size is required to accommodate student course choice
03333012	Chilliwack Secondary	PHYSICAL EDUCATION 10 (05), PHYSICAL EDUCATION 11 (05), PHYSICAL EDUCATION 12 (0)	33	This is a course students need as part of their graduation program and is organized to meet student program needs.
03333012	Chilliwack Secondary	PHYSICS 11 (01)	31	This is a course students need as part of their graduation program and is organized to meet student program needs.

District - Rationales for Classes with More Than 30 Students

033 -Chilliwack

Source: Class size data collection (as of September 30) from standard BC public schools.

Under the *School Act* whenever a class in grades 4 to 12 exceeds 30 students, the principal and the superintendent must confirm that in their opinion, the learning conditions in that classroom are appropriate for the students. In addition, the principal must state the reasons or rationale for that class exceeding 30 students. If parents have questions regarding the information in this report, they should contact the school principal.

Ministry Code	School Name	Division/Class	No. of Students	Rationale
03333012	Chilliwack Secondary	PRINCIPLES OF MATHEMATICS 11 (02)	32	This is a course students need as part of their graduation program and is organized to meet student program needs.
03333012	Chilliwack Secondary	SOCIAL STUDIES 11 (01)	31	This is a course students need as part of their graduation program and is organized to meet student program needs.
03333012	Chilliwack Secondary	VISUAL ARTS 10: GENERAL (01)	31	This size is required to accommodate student course choice
03333018	Sardis Secondary	ART FOUNDATIONS 11 (01), ART FOUNDATIONS 12 (01)	34	This grouping of students is the most effective use of school personnel and resources. This organization facilitates access for all student to appropriate programming.
03333018	Sardis Secondary	ART FOUNDATIONS 11 (03), ART FOUNDATIONS 12 (03)	33	This grouping of students is the most effective use of school personnel and resources. This organization facilitates access for all students to appropriate programming.
03333018	Sardis Secondary	BA HEALTH RELATED ACTIVITIES 11A (03)	31	This grouping of students is tshe most effective use of school personnel and resources. This organization facilitates access for all students to appropriate programming.
03333018	Sardis Secondary	BA HEALTH RELATED ACTIVITIES 11B (03), BA HEALTH RELATED ACTIVITIES 12B (03)	32	This grouping of students is the most effective use of school personnel and resources. This organization facilitates access for all students to appropriate programming.
03333018	Sardis Secondary	BA VISUAL AND PERFORMING ARTS 10A (01), BA VISUAL AND PERFORMING ARTS 11A (01),	44	This grouping of students is the most effective use of school personnel and resources. This organization facilitates access for all students to appropriate programming.
03333018	Sardis Secondary	BC FIRST NATIONS STUDIES 12 (02)	31	This grouping of students is the most effective use of school personnel and resources. This organization facilitates access for all students to appropriate programming.

District - Rationales for Classes with More Than 30 Students

033 -Chilliwack

Source: Class size data collection (as of September 30) from standard BC public schools.

Under the *School Act* whenever a class in grades 4 to 12 exceeds 30 students, the principal and the superintendent must confirm that in their opinion, the learning conditions in that classroom are appropriate for the students. In addition, the principal must state the reasons or rationale for that class exceeding 30 students. If parents have questions regarding the information in this report, they should contact the school principal.

Ministry Code	School Name	Division/Class	No. of Students	Rationale
03333018	Sardis Secondary	CHEMISTRY 11 (01)	33	This grouping of students is the most effective use of school personnel and resources. This organization facilitates access for all students to appropriate programming.
03333018	Sardis Secondary	CHEMISTRY 11 (02)	31	This grouping of students is the most effective use of school personnel and resources. This organization facilitates access for all students to appropriate programming.
03333018	Sardis Secondary	CHEMISTRY 12 (01)	31	This grouping of students is the most effective use of school personnel and resources. This organization facilitates access for all students to appropriate programming.
03333018	Sardis Secondary	COMMUNICATIONS 11 (02)	31	This grouping of students is the most effective use of school personnel and resources. This organization facilitates access for all students to appropriate programming.
03333018	Sardis Secondary	DANCE 10: PERFORMANCE (02), DANCE: PERFORMANCE 11 (02), DANCE: PERFORMANCE 12 (0	33	This grouping of students is the most effective use of school personnel and resources. This organization facilitates access for all students to appropriate programming.
03333018	Sardis Secondary	ENGLISH 10 (01)	31	This grouping of students is the most effective use of school personnel and resources. This organization facilitates access for all students to appropriate programming.
03333018	Sardis Secondary	ENGLISH 10 (02)	31	This grouping of students is the most effective use of school personnel and resources. This organization facilitates access for all students to appropriate programming.
03333018	Sardis Secondary	ENGLISH 11 (01)	33	This grouping of students is the most effective use of school personnel and resources. This organization facilitates access for all students to appropriate programming.

District - Rationales for Classes with More Than 30 Students

033 -Chilliwack

Source: Class size data collection (as of September 30) from standard BC public schools.

Under the *School Act* whenever a class in grades 4 to 12 exceeds 30 students, the principal and the superintendent must confirm that in their opinion, the learning conditions in that classroom are appropriate for the students. In addition, the principal must state the reasons or rationale for that class exceeding 30 students. If parents have questions regarding the information in this report, they should contact the school principal.

Ministry Code	School Name	Division/Class	No. of Students	Rationale
03333018	Sardis Secondary	ENGLISH 11 (01)	31	This grouping of students is the most effective use of school personnel and resources. This organization facilitates access for all students to appropriate programming.
03333018	Sardis Secondary	ENGLISH 11 (02)	31	This grouping of students is the most effective use of school personnel and resources. This organization facilitates access for all students to appropriate programming.
03333018	Sardis Secondary	ENGLISH 11 (07)	34	This grouping of students is the most effective use of school personnel and resources. This organization facilitates access for all students to appropriate programming.
03333018	Sardis Secondary	ENGLISH 12 (01)	32	This grouping of students is the most effective use of school personnel and resources. This organization facilitates access for all students to appropriate programming.
03333018	Sardis Secondary	ENGLISH 12 (03)	33	This grouping of students is the most effective use of school personnel and resources. This organization facilitates access for all students to appropriate programming.
03333018	Sardis Secondary	ENGLISH 12 (04)	32	This grouping of students is the most effective use of school personnel and resources. This organization facilitates access for all students to appropriate programming.
03333018	Sardis Secondary	ENGLISH 12 (06)	32	This grouping of students is the most effective use of school personnel and resources. This organization facilitates access for all students to appropriate programming.
03333018	Sardis Secondary	ENTREPRENEURSHIP 12 (01)	32	This grouping of students is the most effective use of school personnel and resources. This organization facilitates access for all students to appropriate programming.

District - Rationales for Classes with More Than 30 Students

033 -Chilliwack

Source: Class size data collection (as of September 30) from standard BC public schools.

Under the *School Act* whenever a class in grades 4 to 12 exceeds 30 students, the principal and the superintendent must confirm that in their opinion, the learning conditions in that classroom are appropriate for the students. In addition, the principal must state the reasons or rationale for that class exceeding 30 students. If parents have questions regarding the information in this report, they should contact the school principal.

Ministry Code	School Name	Division/Class	No. of Students	Rationale
03333018	Sardis Secondary	ESSENTIALS OF MATHEMATICS 11 (01)	32	This grouping of students is the most effective use of school personnel and resources. This organization facilitates access for all students to appropriate programming.
03333018	Sardis Secondary	ESSENTIALS OF MATHEMATICS 11 (02)	31	This grouping of students is the most effective use of school personnel and resources. This organization facilitates access for all students to appropriate programming.
03333018	Sardis Secondary	ESSENTIALS OF MATHEMATICS 11 (06), FOUNDATIONS OF MATH AND PRE-CALCULUS 10 (01)	33	This grouping of students is the most effective use of school personnel and resources. This organization facilitates access for all students to appropriate programming.
03333018	Sardis Secondary	FOUNDATIONS OF MATH AND PRE-CALCULUS 10 (02)	32	This grouping of students is the most effective use of school personnel and resources. This organization facilitates access for all students to appropriate programming.
03333018	Sardis Secondary	FOUNDATIONS OF MATH AND PRE-CALCULUS 10 (05)	33	This grouping of students is the most effective use of school personnel and resources. This organization facilitates access for all students to appropriate programming.
03333018	Sardis Secondary	FOUNDATIONS OF MATH AND PRE-CALCULUS 10 (06)	32	This grouping of students is the most effective use of school personnel and resources. This organization facilitates access for all students to appropriate programming.
03333018	Sardis Secondary	FRANÇAIS LANGUE SECONDE-IMMERSION 10 (02)	32	This grouping of students is the most effective use of school personnel and resources. This organization facilitates access for all students to appropriate programming.
03333018	Sardis Secondary	INSTRUMENTAL MUSIC 11: CONCERT BAND (01), INSTRUMENTAL MUSIC 12: CONCERT BAND (0)	55	This grouping of students is the most effective use of school personnel and resources. This organization facilitates access for all students to appropriate programming.

District - Rationales for Classes with More Than 30 Students

033 -Chilliwack

Source: Class size data collection (as of September 30) from standard BC public schools.

Under the *School Act* whenever a class in grades 4 to 12 exceeds 30 students, the principal and the superintendent must confirm that in their opinion, the learning conditions in that classroom are appropriate for the students. In addition, the principal must state the reasons or rationale for that class exceeding 30 students. If parents have questions regarding the information in this report, they should contact the school principal.

Ministry Code	School Name	Division/Class	No. of Students	Rationale
03333018	Sardis Secondary	METAL FAB. & MACHINING 12:ADV. WELDING (03), METAL FAB. & MACHINING 12:ADVANCED	31	This grouping of students is the most effective use of school personnel and resources. This organization facilitates access for all students to appropriate programming.
03333018	Sardis Secondary	PHYSICAL EDUCATION 10 (13), PHYSICAL EDUCATION 11 (08), PHYSICAL EDUCATION 12 (0)	31	This grouping of students is the most effective use of school personnel and resources. This organization facilitates access for all students to appropriate programming.
03333018	Sardis Secondary	PRINCIPLES OF MATHEMATICS 11 (02)	31	This grouping of students is the most effective use of school personnel and resources. This organization facilitates access for all students to appropriate programming.
03333018	Sardis Secondary	PRINCIPLES OF MATHEMATICS 12 (01)	33	This grouping of students is the most effective use of school personnel and resources. This organization facilitates access for all students to appropriate programming.
03333018	Sardis Secondary	SCIENCE 10 (01)	32	This grouping of students is the most effective use of school personnel and resources. This organization facilitates access for all students to appropriate programming.
03333018	Sardis Secondary	SCIENCE 10 (02)	31	This grouping of students is the most effective use of school personnel and resources. This organization facilitates access for all students to appropriate programming.
03333018	Sardis Secondary	SOCIAL STUDIES 10 (01)	31	This grouping of students is the most effective use of school personnel and resources. This organization facilitates access for all students to appropriate programming.
03333018	Sardis Secondary	SOCIAL STUDIES 10 (03)	32	This grouping of students is the most effective use of school personnel and resources. This organization facilitates access for all students to appropriate programming.

District - Rationales for Classes with More Than 30 Students

033 -Chilliwack

Source: Class size data collection (as of September 30) from standard BC public schools.

Under the *School Act* whenever a class in grades 4 to 12 exceeds 30 students, the principal and the superintendent must confirm that in their opinion, the learning conditions in that classroom are appropriate for the students. In addition, the principal must state the reasons or rationale for that class exceeding 30 students. If parents have questions regarding the information in this report, they should contact the school principal.

Ministry Code	School Name	Division/Class	No. of Students	Rationale
03333018	Sardis Secondary	SOCIAL STUDIES 10 (04)	32	This grouping of students is the most effective use of school personnel and resources. This organization facilitates access for all students to appropriate programming.
03333018	Sardis Secondary	SOCIAL STUDIES 10 (05)	31	This grouping of students is the most effective use of school personnel and resources. This organization facilitates access for all students to appropriate programming.
03333018	Sardis Secondary	SOCIAL STUDIES 10 (06)	31	This grouping of students is the most effective use of school personnel and resources. This organization facilitates access for all students to appropriate programming.
03333018	Sardis Secondary	STUDIO ARTS 11: CERAMICS AND SCULPTURE (01), STUDIO ARTS 12: CERAMICS AND SCULPT	32	This grouping of students is the most effective use of school personnel and resources. This organization facilitates access for all students to appropriate programming.
03333018	Sardis Secondary	STUDIO ARTS 11:PRINTMAKING/GRAPHIC DES. (01), STUDIO ARTS 12:PRINTMAKING/GRAPHIC	31	This grouping of students is the most effective use of school personnel and resources. This organization facilitates access for all students to appropriate programming.
03333018	Sardis Secondary	THEATRE PRODUCTION 11 (01), THEATRE PRODUCTION 12: TECHNICAL THEATRE (01)	32	This grouping of students is the most effective use of school personnel and resources. This organization facilitates access for all students to appropriate programming.
03333023	Rosedale Traditional Middle School	ENGLISH LANGUAGE ARTS 8 (01)	31	This grouping of students is the most effective use of school personnel and resources. This organization facilitates access for all students to appropriate programming. Class size is required to accommodate student course choices.
03333023	Rosedale Traditional Middle School	ENGLISH LANGUAGE ARTS 8 (02)	32	Class size is required to accommodate student course choices.

District - Rationales for Classes with More Than 30 Students

033 -Chilliwack

Source: Class size data collection (as of September 30) from standard BC public schools.

Under the *School Act* whenever a class in grades 4 to 12 exceeds 30 students, the principal and the superintendent must confirm that in their opinion, the learning conditions in that classroom are appropriate for the students. In addition, the principal must state the reasons or rationale for that class exceeding 30 students. If parents have questions regarding the information in this report, they should contact the school principal.

Ministry Code	School Name	Division/Class	No. of Students	Rationale
03333023	Rosedale Traditional Middle School	ENGLISH LANGUAGE ARTS 8 (03)	32	Class size is required to accommodate student course choices.
03333023	Rosedale Traditional Middle School	MATHEMATICS 8 (01)	32	This grouping of students is the most effective use of school personnel and resources. This organization facilitates access for all students to appropriate programming. Class size is required to accommodate student course choices.
03333023	Rosedale Traditional Middle School	MATHEMATICS 8 (02)	31	Class size is required to accommodate student course choices.
03333023	Rosedale Traditional Middle School	MATHEMATICS 8 (03)	32	Class size is required to accommodate student course choices.
03333023	Rosedale Traditional Middle School	PHYSICAL EDUCATION 8 (01)	31	This grouping of students is the most effective use of school personnel and resources. This organization facilitates access for all students to appropriate programming. Class size is required to accommodate student course choices.
03333023	Rosedale Traditional Middle School	PHYSICAL EDUCATION 8 (02)	32	Class size is required to accommodate student course choices.
03333023	Rosedale Traditional Middle School	PHYSICAL EDUCATION 8 (03)	32	Class size is required to accommodate student course choices.
03333023	Rosedale Traditional Middle School	SCIENCE 8 (01)	31	This grouping of students is the most effective use of school personnel and resources. This organization facilitates access for all students to appropriate programming. Class size is required to accommodate student course choices.
03333023	Rosedale Traditional Middle School	SCIENCE 8 (02)	32	Class size is required to accommodate student course choices.
03333023	Rosedale Traditional Middle School	SCIENCE 8 (03)	32	Class size is required to accommodate student course choices.

District - Rationales for Classes with More Than 30 Students

033 -Chilliwack

Source: Class size data collection (as of September 30) from standard BC public schools.

Under the *School Act* whenever a class in grades 4 to 12 exceeds 30 students, the principal and the superintendent must confirm that in their opinion, the learning conditions in that classroom are appropriate for the students. In addition, the principal must state the reasons or rationale for that class exceeding 30 students. If parents have questions regarding the information in this report, they should contact the school principal.

Ministry Code	School Name	Division/Class	No. of Students	Rationale
03333023	Rosedale Traditional Middle School	SOCIAL STUDIES 8 (01)	31	This grouping of students is the most effective use of school personnel and resources. This organization facilitates access for all students to appropriate programming. Class size is required to accommodate student course choices.
03333023	Rosedale Traditional Middle School	SOCIAL STUDIES 8 (02)	32	Class size is required to accommodate student course choices.
03333033	A D Rundle Middle School	XBA--08 - BAND 8 (1)	33	This grouping of students is the most effective use of school personnel and resources. This organization facilitates access for all students to appropriate programming.
03333034	Vedder Middle School	PHYSICAL EDUCATION 9 (01)	31	Class size is required to accommodate student's course choices.
03333034	Vedder Middle School	SCIENCE 9 (06)	31	Class size is required to accommodate student's course choices.
03333034	Vedder Middle School	SOCIAL STUDIES 9 (01)	32	Class size is required to accommodate student's course choices.
03333034	Vedder Middle School	SOCIAL STUDIES 9 (03)	32	Class size is required to accommodate student's course choices.
03333034	Vedder Middle School	SOCIAL STUDIES 9 (04)	31	Class size is required to accommodate student's course choices.
03333034	Vedder Middle School	SOCIAL STUDIES 9 (06)	31	Class size is required to accommodate student's course choices.
03333038	Mount Slesse Middle School	FRENCH 9 (01)	33	Teacher agrees to learning situation to accommodate course choice.
03333038	Mount Slesse Middle School	MATHEMATICS 8 (04)	31	Teacher agrees to learning situation to accommodate course choice.
03333038	Mount Slesse Middle School	PHYSICAL EDUCATION 9 (05)	31	Teacher agrees to learning situation to accommodate course choice.

District - Rationales for Classes with More Than 30 Students

033 -Chilliwack

Source: Class size data collection (as of September 30) from standard BC public schools.

Under the *School Act* whenever a class in grades 4 to 12 exceeds 30 students, the principal and the superintendent must confirm that in their opinion, the learning conditions in that classroom are appropriate for the students. In addition, the principal must state the reasons or rationale for that class exceeding 30 students. If parents have questions regarding the information in this report, they should contact the school principal.

Ministry Code	School Name	Division/Class	No. of Students	Rationale
03333043	GW Graham Middle Secondary	MBI--11--S - BIOLOGY 11 (02)	31	This configuration ensures equity of access for all students selecting this class. This is a course students need as part of their graduation program and is organized to accomodate student program needs.
03333043	GW Graham Middle Secondary	MCCN-12--S - COMPARATIVE CIVILIZATIONS 12 (01)	31	This configuration ensures equity of access for all students selecting this class. This is a course students need as part of their graduation program and is organized to accomodate student program needs.
03333043	GW Graham Middle Secondary	MCH--11--S - CHEMISTRY 11 (01)	31	This configuration ensures equity of access for all students selecting this class. This is a course students need as part of their graduation program and is organized to accomodate student program needs.
03333043	GW Graham Middle Secondary	MDNP-10--S - DANCE 10 (01), MDNC-09--S - DANCE 09 (01)	31	This configuration ensures equity of access for all students selecting this class. This is a course students need as part of their graduation program and is organized to accomodate student program needs.
03333043	GW Graham Middle Secondary	MEN--08FA - ENGLISH 8 FINE ARTS (01)	31	This configuration ensures equity of access for all students selecting this class.
03333043	GW Graham Middle Secondary	MFR--08 - FRENCH 08 (01)	32	This configuration ensures equity of access for all students selecting this class. This is a course students need as part of their graduation program and is organized to accomodate student program needs.
03333043	GW Graham Middle Secondary	MFR--09--S - FRENCH 09 (01)	32	This configuration ensures equity of access for all students selecting this class. This is a course students need as part of their graduation program and is organized to accomodate student program needs.

District - Rationales for Classes with More Than 30 Students

033 -Chilliwack

Source: Class size data collection (as of September 30) from standard BC public schools.

Under the *School Act* whenever a class in grades 4 to 12 exceeds 30 students, the principal and the superintendent must confirm that in their opinion, the learning conditions in that classroom are appropriate for the students. In addition, the principal must state the reasons or rationale for that class exceeding 30 students. If parents have questions regarding the information in this report, they should contact the school principal.

Ministry Code	School Name	Division/Class	No. of Students	Rationale
03333043	GW Graham Middle Secondary	MIMG-11 - GUITAR 11 (01), MIMG-12 - GUITAR 12 (01), MMGR-10 - GUITAR 10 (01), MM	32	This configuration ensures equity of access for all students selecting this class. This is a course students need as part of their graduation program and is organized to accommodate student program needs.
03333043	GW Graham Middle Secondary	MPE--08 - PE 08 (02)	33	This configuration ensures equity of access for all students selecting this class.
03333043	GW Graham Middle Secondary	MPE--08 - PE 08 (04)	31	This configuration ensures equity of access for all students selecting this class.
03333043	GW Graham Middle Secondary	MPE--08A - PE 08 ATHLETICS (01)	31	This configuration ensures equity of access for all students selecting this class.
03333043	GW Graham Middle Secondary	MPE--10--S - PE 10 (01)	32	This configuration ensures equity of access for all students selecting this class. This is a course students need as part of their graduation program and is organized to accommodate student program needs.
03333043	GW Graham Middle Secondary	MSC--08FA - SCIENCE 8FA (01)	32	This configuration ensures equity of access for all students selecting this class. This is a course students need as part of their graduation program and is organized to accommodate student program needs.
03333043	GW Graham Middle Secondary	MSC--10--S - SCIENCE 10 (02)	31	This configuration ensures equity of access for all students selecting this class. This is a course students need as part of their graduation program and is organized to accommodate student program needs.
03333043	GW Graham Middle Secondary	MSC--10--S - SCIENCE 10 (06)	31	This configuration ensures equity of access for all students selecting this class. This is a course students need as part of their graduation program and is organized to accommodate student program needs.

District - Rationales for Classes with More Than 30 Students

033 -Chilliwack

Source: Class size data collection (as of September 30) from standard BC public schools.

Under the *School Act* whenever a class in grades 4 to 12 exceeds 30 students, the principal and the superintendent must confirm that in their opinion, the learning conditions in that classroom are appropriate for the students. In addition, the principal must state the reasons or rationale for that class exceeding 30 students. If parents have questions regarding the information in this report, they should contact the school principal.

Ministry Code	School Name	Division/Class	No. of Students	Rationale
03333043	GW Graham Middle Secondary	MSP--09--S - SPANISH 09 (01)	32	This configuration ensures equity of access for all students selecting this class. This is a course students need as part of their graduation program and is organized to accomodate student program needs.
03333043	GW Graham Middle Secondary	MSS--08FA - SOCIAL STUDIES 8 FINE ARTS (01)	31	This configuration ensures equity of access for all students selecting this class.
03333043	GW Graham Middle Secondary	YHRA-1A--S - HEALTH & FITNESS 11 (01), YHRA-2A--S - HEALTH & FITNESS 12 (01)	32	This configuration ensures equity of access for all students selecting this class. This is a course students need as part of their graduation program and is organized to accomodate student program needs.
03333043	GW Graham Middle Secondary	YHRA-1B--S - PE 11 ATHLETICS (01), YHRA-2B--S - PE 12 ATHLETICS (01)	36	This configuration ensures equity of access for all students selecting this class. This is a course students need as part of their graduation program and is organized to accomodate student program needs.
03333043	GW Graham Middle Secondary	YVPA-1A - INSTRUMENTAL SURVEY 11 (03), YVPA-2A - INSTRUMENTAL SURVEY 12 (03), MI	57	This configuration ensures equity of access for all students selecting this class. This is a course students need as part of their graduation program and is organized to accomodate student program needs.