

Overview of Class Size and Composition in British Columbia Public Schools 2010/11

School District 020 Kootenay-Columbia

These class size data are current as of September 30, 2010 and have been verified by school districts.

PLEASE NOTE

The Ministry makes small and continuous improvements to the quality of its data. Sometimes these changes result in differences from previously published reports. The data in this report are the most accurate data available at time of publication.

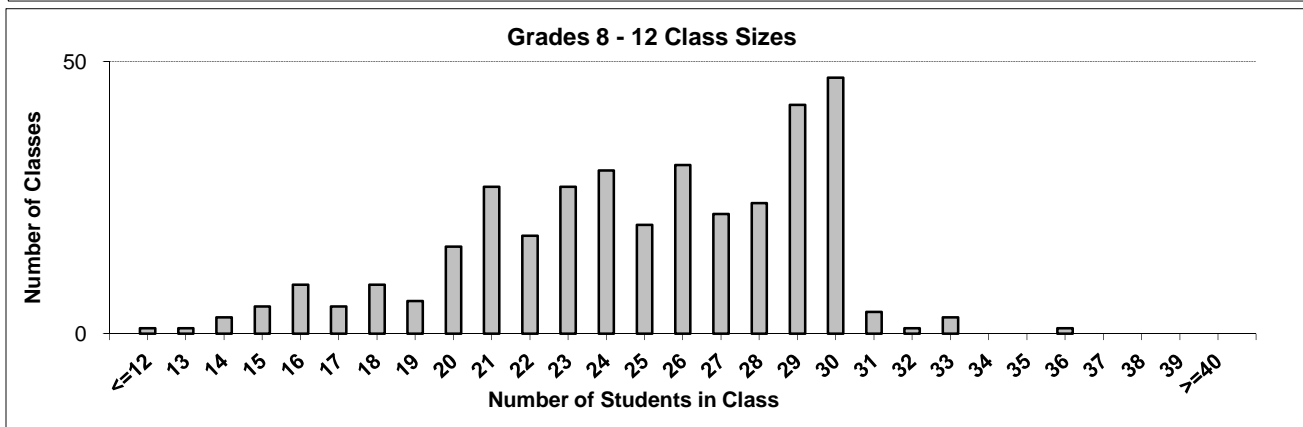
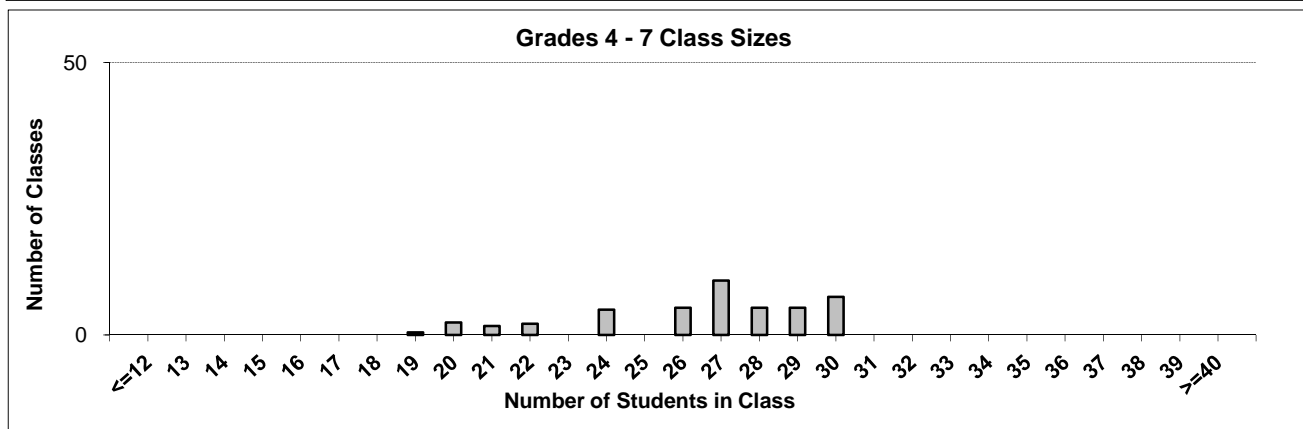
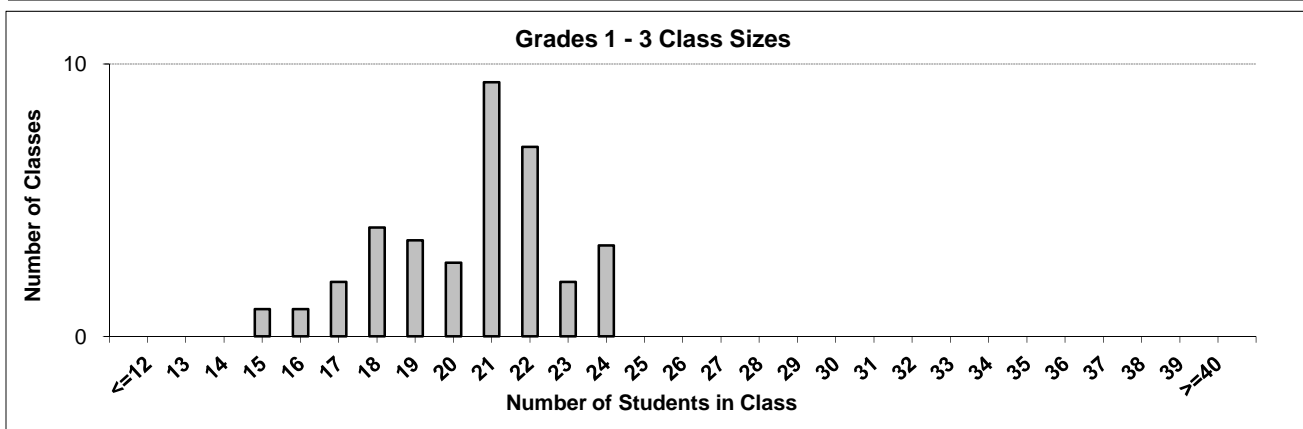
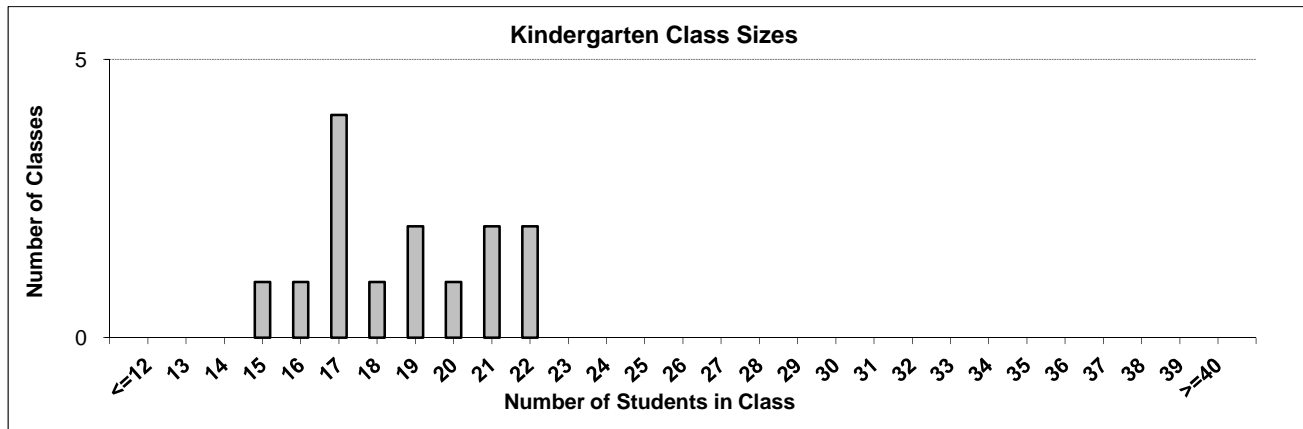
Ministry reports are available at <http://www.bced.gov.bc.ca/reporting/>

Contact the Information Department at educ.reportingunit@gov.bc.ca

District Class Sizes

020 Kootenay-Columbia

Source: Class size data collection (as of September 30) from standard BC public schools.



District - Average Class Size

020 Kootenay-Columbia

Source: Class size data collection (as of September 30) from standard BC public schools.

District - Average Class Size	Kindergarten	Grade 1 - 3	Grade 4 - 7	Grade 8 - 12
	18.6	20.4	26.5	24.9

Province - Average Class Size	Kindergarten	Grade 1 - 3	Grade 4 - 7	Grade 8 - 12
	18.3	20.7	25.9	25.1

Number of Reported Classes with Assigned Education Assistants	136
---------------------------------------------------------------	-----

Number of Reported Schools in District	11
----------------------------------------	----

Number of Reported Classes in District	445
----------------------------------------	-----

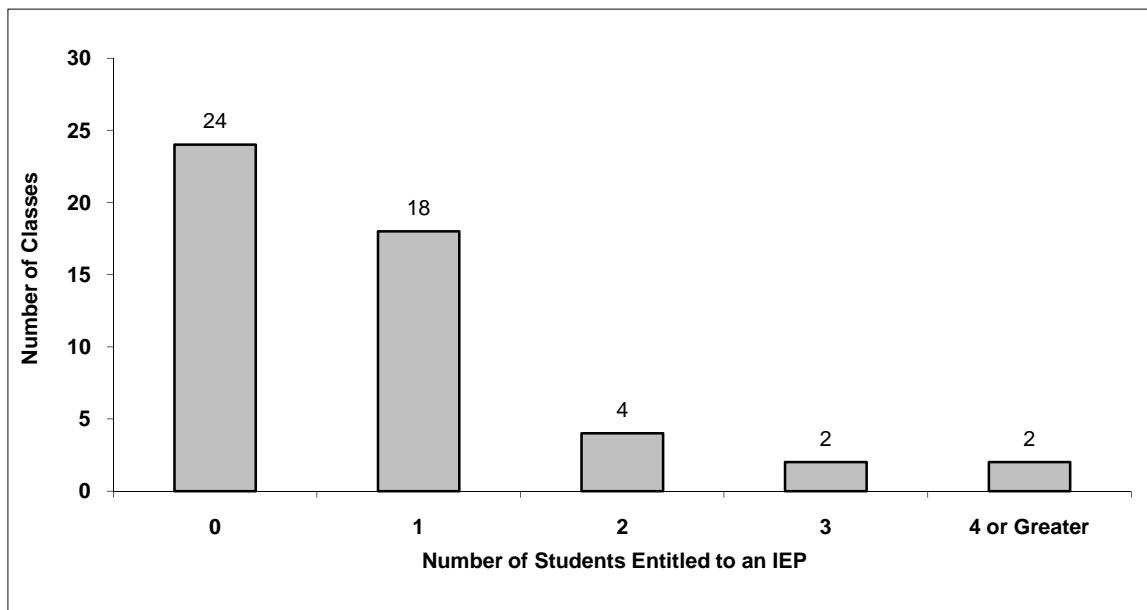
Number of Reported Classes in District with more than 30 Students	9
-------------------------------------------------------------------	---

District - Students Entitled to an Individual Education Plan (IEP)

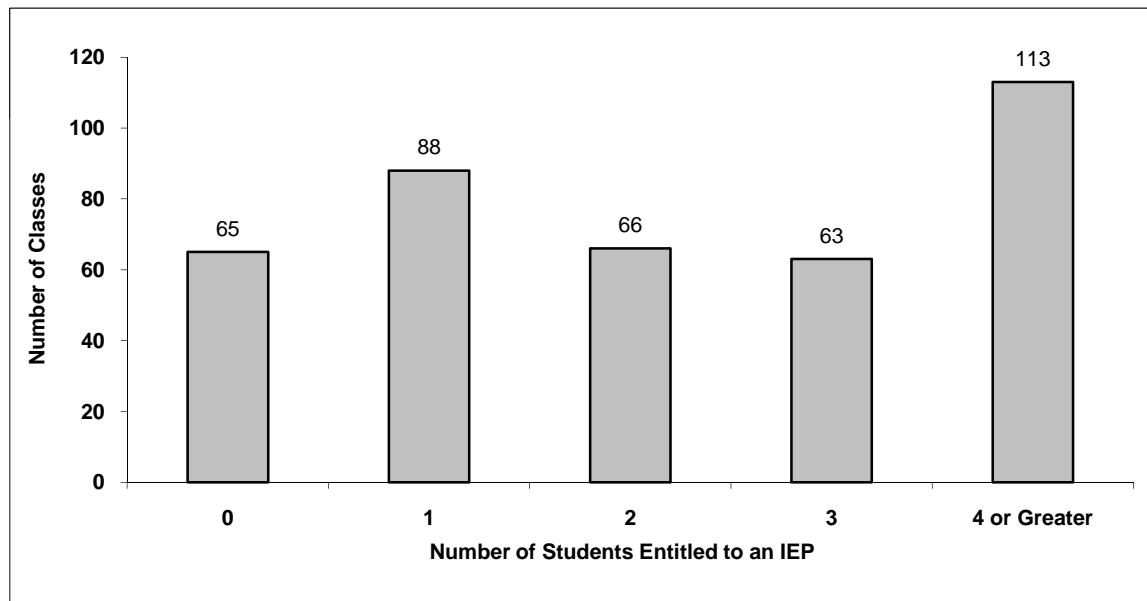
020 Kootenay-Columbia

Source: Class size data collection (as of September 30) from standard BC public schools.

Grades K-3 - Number of Classes in District with 'X' Number of Students Entitled to an IEP



Grades 4-12 - Number of Classes in District with 'X' Number of Students Entitled to an IEP

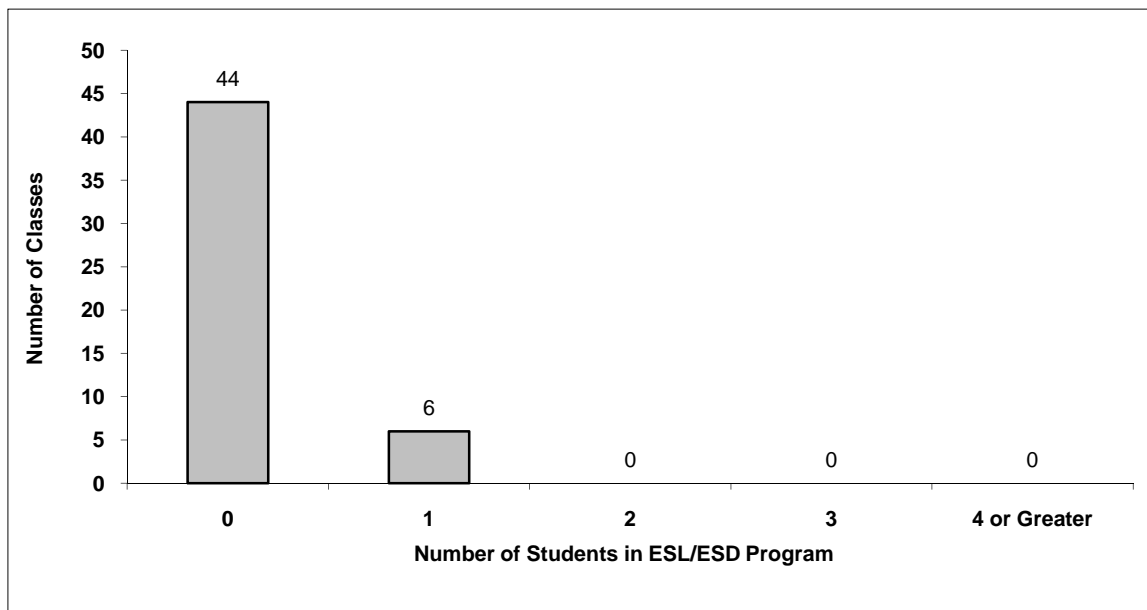


District - Students in English as a Second Language/Dialect (ESL/ESD) Program

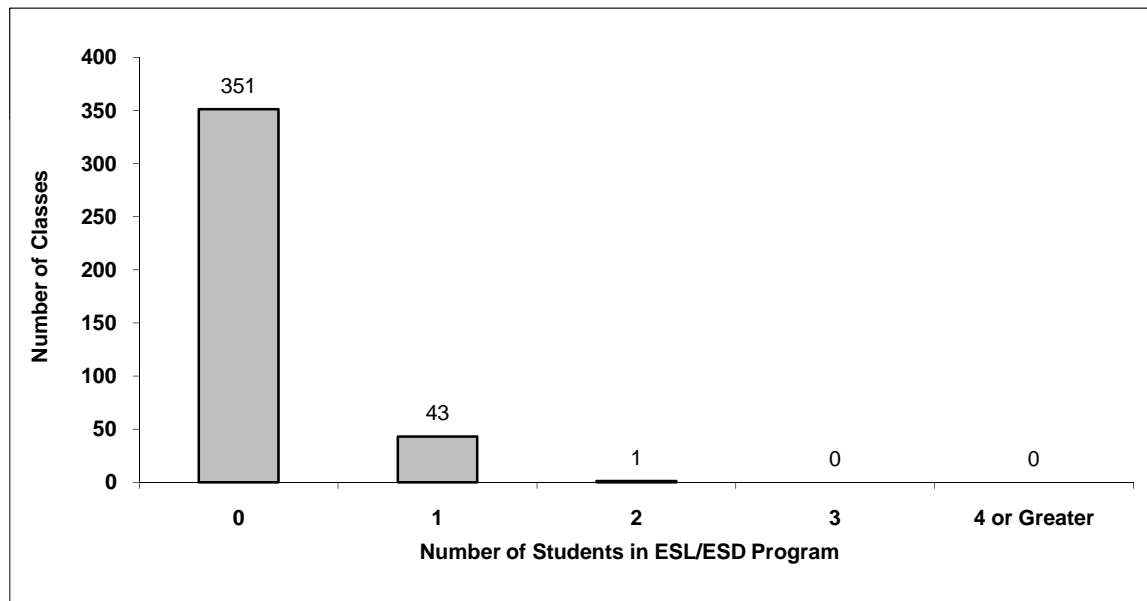
020 Kootenay-Columbia

Source: Class size data collection (as of September 30) from standard BC public schools.

Grades K-3 - Number of Classes in District with 'X' Number of Students in ESL/ESD Program



Grades 4-12 - Number of Classes in District with 'X' Number of Students in ESL/ESD Program



020 Kootenay-Columbia - Average Class Size by School

Source: Class size data collection (as of September 30) from standard BC public schools.

Ministry Code	School Name	Kindergarten	Grade 1 - 3	Grade 4 - 7	Grade 8 - 12
02009017	Castlegar Primary School	16.3	20.0	-	-
02011005	Fruitvale Elementary	17.0	22.1	26.3	-
02011015	Glenmerry Elementary	21.0	21.7	26.6	-
02011012	J Lloyd Crowe Secondary	-	-	-	25.5
02011009	James L Webster Elementary	19.0	18.0	27.0	-
02009006	Kinnaird Elementary	18.0	19.4	24.7	-
02011004	MacLean Elementary	21.5	21.1	23.0	-
02020021	Robson Community School	19.0	23.0	28.5	-
02011014	Rossland Secondary	-	-	24.3	23.3
02009010	Stanley Humphries Secondary	-	-	-	24.5
02009011	Twin Rivers Elementary	-	18.2	28.4	-

Glossary

Term	Definition / Notes
English as a Second Language/Dialect (ESL/ESD) Program	<ul style="list-style-type: none"> • A program offered to students whose primary language(s) is/are other than English, and who may require additional services.
Grade	<ul style="list-style-type: none"> • The assigned grade of a student on September 30.
KH	<ul style="list-style-type: none"> • Kindergarten half-time
KF	<ul style="list-style-type: none"> • Kindergarten full-time
Number of Students	<ul style="list-style-type: none"> • Student population is calculated by headcount.
Student	<ul style="list-style-type: none"> • A person enrolled in a BC school. Student populations are calculated by headcount. Students include all adult and school-aged persons who are working toward a certificate of graduation.
Student Entitled to an Individual Education Plan	<ul style="list-style-type: none"> • A student for whom an Individual Education Plan (IEP) must be designed under the Individual Education Plan order, Ministerial Order 638/95.

District - Rationales for Classes with More Than 30 Students

020 - Kootenay-Columbia

Source: Class size data collection (as of September 30) from standard BC public schools.

Under the *School Act* whenever a class in grades 4 to 12 exceeds 30 students, the principal and the superintendent must confirm that in their opinion, the learning conditions in that classroom are appropriate for the students. In addition, the principal must state the reasons or rationale for that class exceeding 30 students. If parents have questions regarding the information in this report, they should contact the school principal.

Ministry Code	School Name	Division/Class	No. of Students	Rationale
02011012	J Lloyd Crowe Secondary	CHEMISTRY 12 (01)	31	Facilitating as many students as possible to take this important class. No other sections fit the student's timetable to allow us to balance the Chemistry. Teacher agrees with the organization of the class.
02011012	J Lloyd Crowe Secondary	Cross Training 11/12	33	Nature of the course is that students move between before school, after school and alternate times which means the class seldom meets as a full group. Teacher agrees with the organization of the class.
02011012	J Lloyd Crowe Secondary	Cross Training 11/12	33	Nature of the course is that students move between before school, after school and alternate times which means the class seldom meets as a full group. Teacher agrees with the organization of the class.
02011012	J Lloyd Crowe Secondary	Cross Training 11/12	36	Nature of the course is that students move between before school, after school and alternate times which means the class seldom meets as a full group. Teacher agrees with the organization of the class.
02011012	J Lloyd Crowe Secondary	Cross Training 11/12	33	Nature of the course is that students move between before school, after school and alternate times which means the class seldom meets as a full group. Teacher agrees with the organization of the class.
02011012	J Lloyd Crowe Secondary	PRINCIPLES OF MATHEMATICS 11 (01)	31	Facilitating as many students as possible to take this important class. Grade 12 students taking this course in first semester as prerequisite to grade 12 math course based on teacher support. Teacher agrees with the organization of the class.

District - Rationales for Classes with More Than 30 Students

020 - Kootenay-Columbia

Source: Class size data collection (as of September 30) from standard BC public schools.

Under the *School Act* whenever a class in grades 4 to 12 exceeds 30 students, the principal and the superintendent must confirm that in their opinion, the learning conditions in that classroom are appropriate for the students. In addition, the principal must state the reasons or rationale for that class exceeding 30 students. If parents have questions regarding the information in this report, they should contact the school principal.

Ministry Code	School Name	Division/Class	No. of Students	Rationale
02011012	J Lloyd Crowe Secondary	PRINCIPLES OF MATHEMATICS 12 (02)	31	Facilitating as many students as possible to take this important class. No other sections fit the student's timetable to allow us to balance the PMath12. Teacher agrees with the organization of the class.
02011012	J Lloyd Crowe Secondary	SCIENCE 10 (02)	31	Grade 11 student requiring grade 10 science as prerequisite to semester 2 science 11 course. Teacher supports having mature and motivated student in class.
02011014	Rossland Secondary	STUDIO ARTS 11: CERAMICS AND SCULPTURE (01), STUDIO ARTS 12: CERAMICS AND SCULPT	32	Ceramics 11 and 12 too small to run on their own. Thus, they were combined with Art 10. The staff member supports the class size and composition.