

Literacy Programs

Prince George B.C.

2009

Prepared by Helen Domshy
Literacy Outreach Coordinator

For
PG Literacy Now

TABLE OF CONTENTS

Programs for 0-6 Year Olds

5	AiMHi
6	Carney Hill Neighborhood Centre
7	Child Development Centre
8	Children First
9	Elizabeth Fry Society
10	Northern Family Health Society
11	Prince George Public Library
13	School District 57
14	South Fort George Family Resource Centre
15	Success by 6
16	YMCA

Programs for K-Grade 12

19	Elizabeth Fry Society
20	Home Based Schooling
21	Learning Disabilities Centre
22	Prince George Public Library
24	School District 57
26	Centre for Learning Alternatives
28	Choice Schools
29	Faith Based Schools
30	South Fort George Family Resource Centre
31	Sylvan Learning Centre
32	Vantage Vision and Reading
33	YMCA

Programs for Adults and Seniors

35	AiMHi
37	B.C. Schizophrenia Society
38	Carney Hill Neighbourhood Centre
39	Carrier Sekani Family Services
41	College of New Caledonia
44	Elizabeth Fry Society

- 45 Immigrant and Multicultural Services Society
- 46 Prince George Native Friendship Centre (Learning Circle)
- 47 Learning Difficulties Centre
- 48 Northern Health Authority
- 49 Northern Family Health Society
- 50 Parent Support Services
- 52 Prince George Council of Seniors
- 53 Prince George Public Library
- 55 Royal Canadian Mounted Police
- 56 School District 57 Continuing Education (Centre for Learning Alternatives)
- 58 South Fort George Family Resource Centre
- 59 United Way Prince George
- 62 University of Northern British Columbia
- 63 Vantage Vision and Reading

DRAFT

Programs for 0-6 Year Olds

- 5 AiMHi
- 6 Carney Hill Neighborhood Centre
- 7 Child Development Centre
- 8 Children First
- 9 Elizabeth Fry Society
- 10 Northern Family Health Society
- 11 Prince George Public Library
- 13 School District 57
- 14 South Fort George Family Resource Centre
- 15 Success by 6
- 16 YMCA

DRAFT

AiMHi

Location: AiMHi - Prince George Association for Community Living
950 Kerry Street - Prince George, BC V2M 5A3
Tel: (250) 564 - 6408 Fax: (250) 564 - 6801
AiMHi@AiMHi.ca

Contact: Judi Smith
250-564-6408 ex.247
250-564-6801 Fax



Programs:

Prince George and District and Skill Building Library

A Community lending library of toys for children, ages birth to 19 years

The Toy Library is open to anyone who can use items from our collection. We have things to help with specific skills; fine motor, social, discrimination, but mostly they are just fun to play with. We also have some parenting resources.

The Snoezelen Room

The word Snoezelen is derived from the Dutch words for "to doze" and "to sniff". The purpose of this room is to provide a non-threatening environment that gives children and adults with learning and developmental disabilities a multi-sensory experience.

Infant Development Program

The Prince George Infant Development Program (IDP) has been in operation since 1979. The Infant Development Program provides services to children from birth to three years of age who are at risk for, or who may have a delay in development.

- Children aged birth to three years
- Delayed in one or more skill area
- Children with a diagnosed disability
- At risk for potential delays
- Parents with questions/concerns
- Referred by: Parent, doctor, health nurse, etc.

Carney Hill Neighbourhood Centre

Includes: Beech Street and Hadih (Porter Street) Community House and South Fort George Daycare

Location: 2579 Victoria Street
Prince George B.C.
V2L 2M3
563-0858, FAX: 563-0807

Contact: Cathy Wiegand
Executive Director

Programs: Special events: Life skills programs, summer programs, Neighbourhood Enrichment (Community Garden Plot)

Parent Support: 1234 Active Parenting
Parent Support Circles
Nobody's Perfect

Clothing exchange/community kitchen/supply pantry/sports equipment lending/movie nights

2 group day cares; afterschool care for K-7; 1 developmental pre-school; pre-school for Aboriginal children who are at-risk.

Child Development Centre

Location: 1687 Strathcona Avenue
Prince George B.C. V2L 4E7
250-563-07168

Contact: Lynelle Sutherland

Programs: Children (ages 6-12) who require extra support with:

Developmental delays
Exceptional health care needs
Challenging behaviours
Mental or physical challenges
Communication delays
Emotional and behaviour challenges

- Speech and Language Development
- Early Childhood Development
- Preschool
- Daycare: TLC or Head Start Day Program.
- Physiotherapy
- Occupational Therapy
- Family Services
- MacDonald's Family Resource Library
- Equipment Loan
- Supported Child Care
- Fully Accessible Play Park

Children First

Location: Mailing Address: Northern Interior Health Unit
1444 Edmonton Street
Prince George, BC
V2M 6W5

Website: <http://www.childrenfirstpg.com/>

Contact: Kathy Basaraba
Manager, Northern Health Authority
250-565-2596

Programs: Funders for projects/programs designed for the pre-pregnancy 0-6 age group and their families. Also supports community capacity building. See web-site for information on grant process, reports etc.

Children First is committed to helping Prince George children from before pregnancy to age six and their families by

- raising awareness of the importance of the early years
- building an early childhood development support system that will lead to healthier children and families.
- bringing together parents, service providers, businesses, government, and community members to find out about the strengths and needs of their community, so we can work together to provide improved services for children and their families in Prince George.

Elizabeth Fry Society

Location: 1575-5th Avenue
Prince George B.C.
V2L 3L9

Contact: 250-563-1113 phone
250-563-8765 fax
www.pgefry.bc.ca

Programs: Children Who Witness Abuse
Power Play

Northern Family Health Society

Location: 2666 Queensway Street
Prince George B.C.
Phone: 250-561-2689
Fax: 250-562-5459
<http://www.nfhs-pg.org/index.html>

Contact: Tricia Wright

Programs: Community action program for children

- Complex Developmental Behavioural Conditions Assessment and Support Services
- Parent Child Mother Goose
- Northern Employment Solutions
- Healthiest Babies Possible
- Youth Works
- Fetal Alcohol Spectrum Disorder Resource Center
- Parent Support Programs

Prince George Public Library

Locations:

Bob Harkins Branch (Downtown)

Address

887 Dominion Street
Prince George, B.C., Canada
V2L 5L1
250-563-9251

Nechako Branch (Hart Hwy)

Address

6547 Hart Highway
Prince George, B.C., Canada
V2K 3A4
250-962-9710

Contact: www.lib.pg.bc.ca

Programs: See website for current/monthly offerings. Examples are:

In-house literacy programs

- Babytime (0-11 months)
- Parent-Child Mother Goose (0-11 months)
- Toddler time (0-3 years)
- Early Literacy Storytime (0-5 years)
- Family Storytime (0-5 years)
- Grandparents Reading Corner (0-5 years)
- Reading Buddies (6-12 years)
- Summer Reading Club (children of all ages)
- Active Parenting
- Reading without Rules Sites

Other Programs:

- Class tours
- IMMS tours
- Community Futures
- TMAP (Teen Mother Alternate Program)

- Aboriginal Construction Class
- June school visits for SRC
- Day camp programs
- Special Needs group Family Y
- CNC Open Doors Program

PGPL has a literacy section in the far back right hand corner upstairs. It is used by tutors and those who know about this service. Cassettes are sometimes found with books, books for all levels and some deal with drugs and other social problems. Books for immigrants are also included. There is a sign reading: **Literacy.**

DRAFT

School District 57

Location: 2100 Ferry Ave
Prince George, BC V2L 4R5
Phone: (250) 561-6800
Fax: (250) 561-6801
Email: sd57@sd57.bc.ca

Contacts: See web site: <http://www.sd57.bc.ca/>

Programs: (Specifically for 0-6)

- HeadStart
- Welcome to Kindergarten
- Ready, Set Learn
- Strong Start BC Early Learning Centres
- Roots of Empathy
- The Primary Project
- K screening
- Kindergarten Learning Project
- Kindergarten booklet
- Community Programs with District Connections

South Fort George Family Resource Centre

Location: 1200 LaSalle Avenue
Prince George, B.C.
V2L 4J8

Contact: 250-614-9449 phone
250-614-9488 fax
frc@pgef.bc.ca

Programs: Living Laughing and Learning
Power Play
South Fort George Daycare Centre

DRAFT

Success by 6

Location: 16600 -3rd Avenue
Prince George B.C.
V2L 3G6
250-613-9318,
Fax 250-562-8102
pgsb6@hotmail.com
www.successby6bc.ca

Contact: Bob Moore
rjmoore@telus.net

Programs: Success By 6 builds and enhances community through engaging citizens in early childhood development, and funding programs that strengthen services for young children and their families. Funded programs include literacy, nutrition, and children's play, parenting and family skills development.

Funds projects that support children from 0-6 years and their parents, through supporting programs dedicated to their cognitive, social and physical development.

\$70, 00.00 budget funds implementation or funds can be used to lever additional funding. Not sustainable funding, but supports perhaps 10 projects per year as directed by an advisory board.

Family YMCA Prince George

Location: 2020 Massey Drive
Prince George, BC
V2L 4V7 PO Box 1808
Phone: 250-562-9341
Fax: 250-564-2474
myymca@pgymca.bc.ca

Contact: See above on following hours:

Monday - Friday
5:30 am - 11:00 pm

Saturday
6:00 am - 10:00 pm

Sunday
7:00 am - 9:00 pm

Programs: Licensed Child Care Programs

Ages 0-12 yrs

Location: YMCA Highland Family Development Centre
Contact Lynette Mikalishen, Child Care Coordinator, 250-562-9341

Location: YMCA Early Learning Centre
Contact Trisha Reid, Child Care Coordinator, 250-562-9331

Location: YMCA After School Care Programs
Contact Michelle McCully, Child Care Coordinator, 250-562-9341
ext 241

Group Child Care and Pre-School

Highland Infant and Toddler Care (0-3 yrs)

Location: YMCA Highland Family Development Centre,
155 McDermid Drive

Highland Group Care (3-5 yrs)

Location: YMCA Highland Family Development Centre,
155 McDermid Drive

Highland Preschool (3-5 yrs)

Location: YMCA Highland Family Development Centre,
155 McDermid Drive

Group Care (3-5 yrs)

Location: YMCA Highland Family Development Centre,
2020 Massey Drive

Tiny Y Preschool (3-5 yrs)

Location: YMCA Early Learning Centre - 2020 Massey Drive

After School Care

After Kinder Care (5-6 yrs)

Location: St.Giles Presbyterian Church,
1500 Edmonton Street

Location: YMCA Highland Family Development Centre,
155 McDermid Drive

General Programs

- Parent and Tot Playtime
- Baby Signing Classes
- Toddler Signing Classes

Programs for K-Grade 12

- 19 Elizabeth Fry Society
- 20 Home Based Schooling
- 21 Learning Disabilities Centre
- 22 Prince George Public Library
- 24 School District 57
- 26 Centre for Learning Alternatives
- 28 Choice Schools
- 29 Faith Based Schools
- 30 South Fort George Family Resource Centre
- 31 Sylvan Learning Centre
- 32 Vantage Vision and Reading
- 33 YMCA

DRAFT

Elizabeth Fry Society

Location: 1575-5th Avenue
Prince George B.C.
V2L 3L9

Contact: 250-563-1113 phone
250-563-8765 fax
www.pgefry.bc.ca

Programs: Children Who Witness Abuse
Young Parent Program

DRAFT

Home Based Schooling

Prince George Home Educators' Association (PGHEA)

Prince George, BC

Email: info@pghea.com

<http://www.pghea.com>

DRAFT

Learning Disabilities Centre (fee based tutoring)

Location: 785 Patricia Boulevard
P.O. Box 1068
Prince George V2L 4V2

Contact: 250-564-8011
250-564-8055 fax
ldadmin@telus.net

Programs: A tutoring centre for individual therapeutic tutoring, based on a multisensory approach
A training centre for the provision of qualified training and professional development workshops
A resource centre, computers, research materials and general information for tutors, families, Society members and the general public.

Fee based one-on one tutoring for:

- a. Language
- b. Math

Prince George Public Library

Locations:

Bob Harkins Branch (Downtown)

Address

887 Dominion Street
Prince George, B.C., Canada
V2L 5L1
250-563-9251

Nechako Branch (Hart Hwy)

Address

6547 Hart Highway
Prince George, B.C., Canada
V2K 3A4
250-962-9710

Contact:

www.lib.pg.bc.ca

Programs:

See website for current/monthly offerings. Examples are:

In-house literacy programs

- Babytime (0-11 months)
- Parent-Child Mother Goose (0-11 months)
- Toddler time (0-3 years)
- Early Literacy Storytime (0-5 years)
- Family Storytime (0-5 years)
- Grandparents Reading Corner (0-5 years)
- Reading Buddies (6-12 years)
- Summer Reading Club (children of all ages)
- Active Parenting
- Reading without Rules Sites

Other Programs:

- Class tours
- IMMS tours
- Community Futures

- TMAP (Teen Mother Alternate Program)
- Aboriginal Construction Class
- June School visits for SRC
- Day camp programs
- Special Needs group Family Y
- CNC Open Doors Program

PGPL has a literacy section in the far back right hand corner upstairs. It is used by tutors and those who know about this service. Cassettes are sometimes found with books, books for all levels and some deal with drugs and other social problems. Books for immigrants are also included. There is a sign reading: **Literacy.**

DRAFT

School District 57

Locations: Prince George Boundaries

Contact: See web site for individual locations: <http://www.sd57.bc.ca>

School District Office Administration office:

2100 Ferry Avenue

Prince George, BC

V2L 4R5

Phone: (250) 561-6800

Fax: (250) 561-6801

E-mail: sd57@sd57.bc.ca

Programs: School District 57 currently has:

- 36 elementary schools
- 1 middle school
- 10 secondary schools
- 1 Centre for Learning Alternatives which includes
 - Continuing Education
 - Distance Education
 - Community Alternate Programs

School-based Support Services:

Special Education staff in schools work together with classroom teachers to plan and implement educational programs for students with special learning needs.

This staff generally includes Resource teachers:

- Learning Assistance teacher
- Special Needs Support teacher
- English as a Second Language / Dialect teacher

Counsellors at some elementary and all secondary schools

- Student support workers
- Teacher assistants
- Aboriginal Education workers
- Youth Care workers

DRAFT

Centre for Learning Alternatives

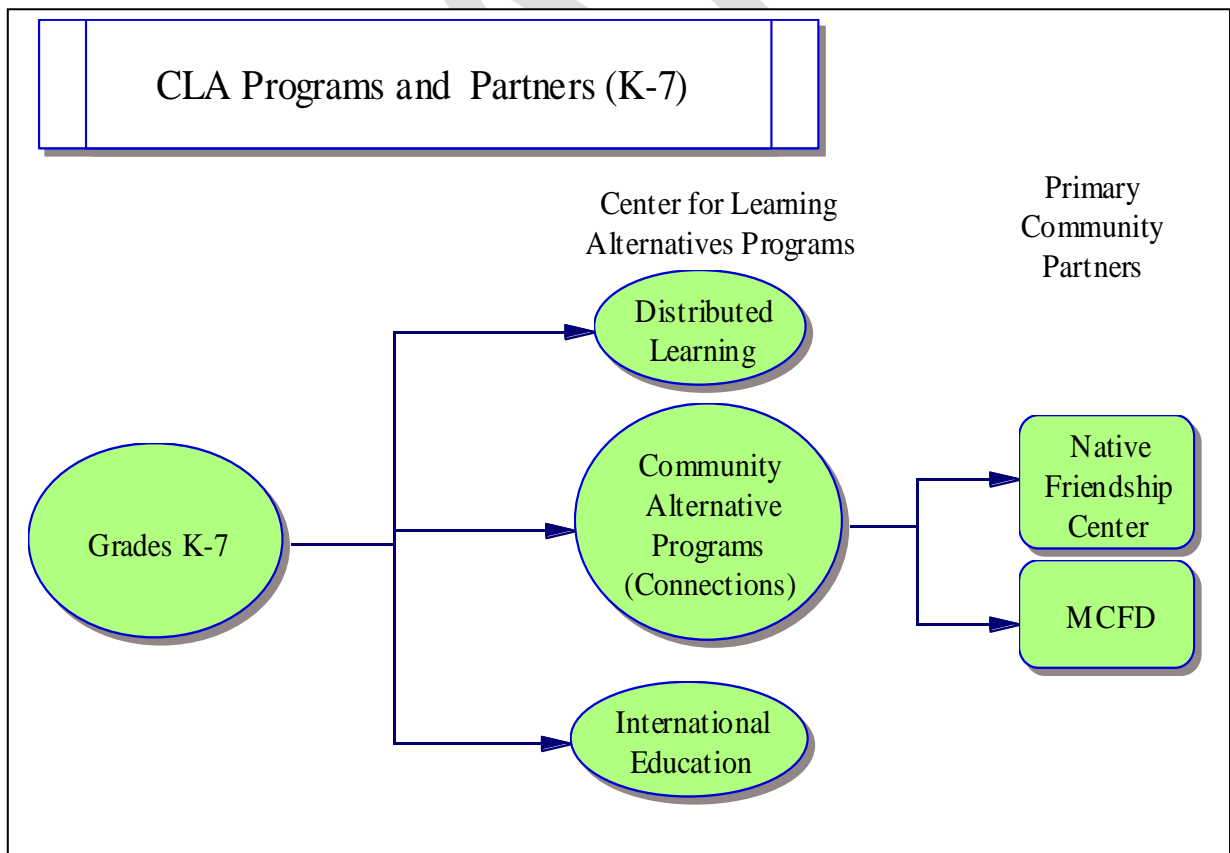
School District No.57 together with many other partners offers a variety of Community Alternative Programs and Provincial Resource Programs to meet the needs of our community.

To illustrate these partnerships, please see the following charts:

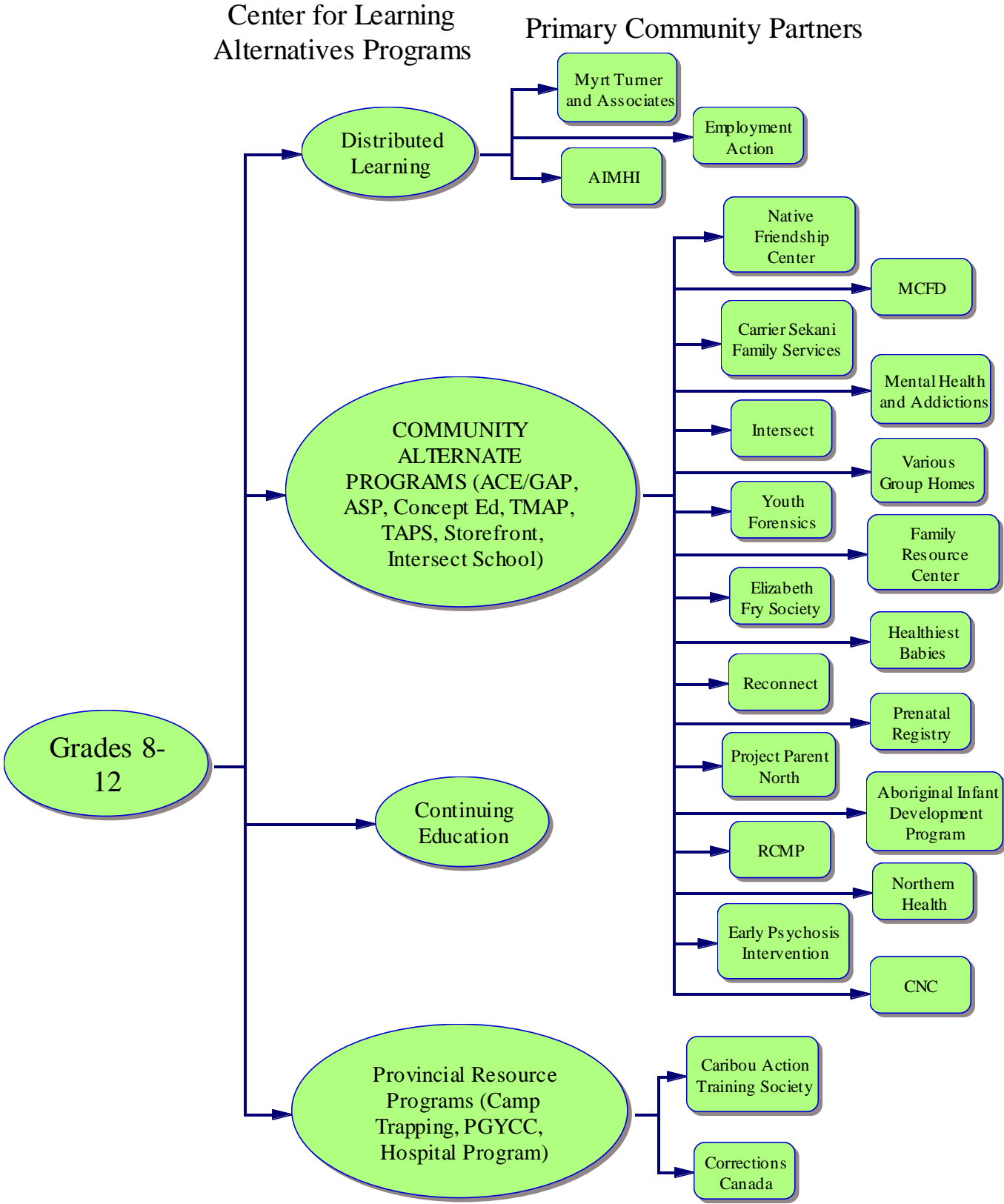
- Community Learning Alternatives Programs and Partners K-7
- Community Learning Alternatives Programs and Partners 8-12
- Community Learning Alternatives Programs and Partners for 19 years old

Acronyms:

TEAM	Together Everyone Achieves More (formerly GAPS/ACE)
TMAP	Teen Mothers Alternative Program
ASP	Alternate School Program
TAPS	Transitional Alternative Program Secondary



CLA Programs and Partners (Gr. 8-12)



Choice Schools

- Career and Technical Programs (see CNC)
- Fine Arts: Dunster Elementary
- Francophone education

School District # 57 (Prince George), in partnership with School District # 93 (Conseil Scolaire Francophone), offer grade 8-12 courses to Francophone students at **Duchess Park Secondary**. This is an extension of the SD #93 program from k-7 housed at **Ecole Elementaire Franco-Nord** located at 2641 Ellison Street (250 612 0755).

- French Immersion
 - French Immersion Programs are open to all non-Francophone students in School district No. 57. Students are eligible for entry at Kindergarten to Grade One. Four district schools house the elementary program: Austin Road Elementary, College Heights Elementary, Spruceland Elementary and Heather Park Middle School.
 - The secondary component of this program is offered at Duchess Park Secondary.
 - In early French Immersion Kindergarten to Grade Three, students receive all instruction in the French language. Grade 4-7 students receive up to 80% of their educational program in French. Secondary French Immersion students receive 50% of their program in French for Grade 8 through Grade 10, 25% in Grade 11 and 12.5% in Grade 12. The subjects taught to students are the same as those taught to English language students, but more of the program is delivered in French than in English. Students graduating from French Immersion programs are able to understand, speak, write and read French with near native fluency.
- Traditional Program

Central Fort George Traditional School is a public elementary school with a traditional focus that is centrally located in Prince George

- Montessori Programs

SD No 57 (Prince George) offers K-7 Montessori programs at Highglen Montessori Elementary School and a Gr. 7-8 program at Lakewood Junior Secondary School.

Faith Based Schools

- Cedars Christian School 701 North Nechako Rd. 250-564-0707
- Gateway Christian School 1919 17th Avenue 250-563-8585
- Immaculate Conception School 3285 Cathedral Ave. 250-962-4362
- Prince George Adventist Christian School 3310 Sutherland Road 250-564-3420
- Sacred Heart School 785 Patricia Blvd. 250-563-5201
- Saint Mary's School 1088 Gillett 250-563-7502
- Zion Lutheran Christian School 180 S. Tabor Blvd. 250-562-2777

DRAFT

South Fort George Family Resource Centre

Location: 1200 La Salle Ave
Prince George B.C.
V2L 4J8

Contact: 250-614-9449 phone
250-614-9448 fax
frc@pgefry.bc.ca e-mail

Programs: Storefront Alternate Education Program

DRAFT

Sylvan Learning Centre (fee based tutoring)

- Location: 1645 Spruce Street
Prince George, BC V2L 2R3
(250) 562-7311
- Contact: <http://tutoring.sylvanlearning.com/centers/V2L2R3/index.cfm>
or call for information
- Programs: Fee based one on one tutoring in any area, e.g. math, reading.
All ages, school children and adults

DRAFT

Vantage Vision and Reading

Location: 1777 Yew Street
Prince George, B.C., V2L 2X3
250-563-1136
250-563-3465 Fax
e-mail pg.rhs@telus.net

Contact: Milly Saville

Programs: Vantage Reading Program

This program assesses and remediates vision skill deficits which impede the reading and comprehension process.

Assessments are done by Milly Saville, augmented by Dr. Brenton Loose, optometrist, when physical eye problems are noted.

Parents or a designated instructor carry out the program, which is carried out daily (5X week) for six weeks.

Program costs: Screening consultations are free. If an individual appears to be a candidate for therapy, the assessment is \$45.00. Tutors are then trained for that specific program. A re-assessment is done every two weeks to determine program changes. Any further training required for changes is given at each assessment. These sessions are \$25.00 each.

N.B. This program takes children and adults.

Family YMCA Prince George

Location: 2020 Massey Drive
Prince George, BC
V2L 4V7 PO Box 1808
Phone: 250-562-9341
Fax: 250-564-2474
myymca@pgymca.bc.ca

Hours: Monday - Friday
5:30 am - 11:00 pm

Saturday
6:00 am - 10:00 pm

Sunday
7:00 am - 9:00 pm

Programs:

Loud and Clear (12-16 yrs)

A writing class that teaches youth new techniques according to their own personal writing ability and level. Students gain confidence in written communication and learn how to emphasize individual strengths.

Homework-Help (Grade 1-12)

Need help with homework? Struggling with a class subject and need some assistance? College and university student volunteers come in and help with homework.

Red Cross Babysitting Course (11+ yrs)

Youth will learn information that will teach what to do in emergency situations, how to handle babies and children, and much more.

You Can Go

You Can Go will support youth and their communities in navigating Post-Secondary Education, completing high school, and developing a sense of their career-self!

Programs for Adults and Seniors

35	AiMHi
37	B.C. Schizophrenia Society
38	Carney Hill Neighbourhood Centre
39	Carrier Sekani Family Services
41	College of New Caledonia
44	Elizabeth Fry Society
45	Immigrant and Multicultural Services Society
46	Prince George Native Friendship Centre (Learning Circle)
47	Learning Difficulties Centre
48	Northern Health Authority
49	Northern Family Health Society
50	Parent Support Services
52	Prince George Council of Seniors
53	Prince George Public Library
55	Royal Canadian Mounted Police
56	School District 57 Continuing Education (Centre for Learning Alternatives)
58	South Fort George Family Resource Centre
59	United Way Prince George
62	University of Northern British Columbia
63	Vantage Vision and Reading

AiMHi

Location: Prince George Association for Community Living
950 Kerry Street - Prince George, BC V2M 5A3
Tel: (250) 564 - 6408 Fax: (250) 564 - 6801
AiMHi@AiMHi.ca

Contact: Adult Life Skills
Telephone: (250) 564-6408

Programs:

Life Skills

The Life Skills program offers training and support to adults who have a developmental disability and children who have special needs.

We provide training in the following areas (but are not limited to these)

- Home Management i.e. cleaning, laundry
- Money Management i.e. budgeting, shopping
- Nutrition i.e. cooking, shopping
- Social Skills i.e. sex education, relationships, assertiveness, stranger awareness
- Transportation i.e. Public and private
- Personal Care i.e. hygiene, health, medical appointments
- Community Resources i.e. use of the library, swimming pool, obtaining BCID, tenants rights, 911
- Leisure and recreational skills

Adults and children are referred by Community Living British Columbia.

If you are interested in this service call Community Living British Columbia at 565-6890 and ask for a duty worker.

Self Help Skills for Adults

Serves adults 19 years and older that live with their family and are preparing to live on their own or those who are already on their own. A contract agreement is done with the Individual, the Social Worker, and the Life Skills Adult Program Manager.

Semi - Independent Living Skills for Adults

Serves adults who live on their own, or with a roommate. An Individual Program Plan (IPP) is developed by the Individual, and significant others and the Life Skills worker. The individual may also receive support to live successfully in the community

Work Options

Serves to teach work related skills, and assist individuals to obtain both volunteer and paid employment within the Prince George Community. We work in connection with the main Work Options program to assist the people we serve in meeting their overall employment goals. Various programs that are taught include; resume development, job skills training, accessing the public transit system and on- the- job coaching. Whenever possible we utilize outside programs such as Employment Action.

The Work Options program offers individuals a variety of opportunities for work experience such as, office, janitorial, yard maintenance, and packaging. The program has paid contracts that individuals may work on to gain experience while getting paid at the same time. Other work experience provides valuable training for people to decide what work best suits them.

Work Options offers job coaching on site to people who require assistance.

Entrance to this program is made with a referral from the individuals' social worker.

B.C. Schizophrenia Society

- Located: 1117-6th Avenue
Prince George, B.C. V2L 4S6
250-561-8033
250-5628-15 Fax
- Contact: Kim Dixon
Regional Manager
- Programs: B.R.I.D.G.E.S. Building Recovery of Individuals Dreams and Goals through Education and Support
B.R.I.C.K. Building Resiliency in Couples with Knowledge
S.F.T. Strengthening Families Together
Peer and Family Support Groups
- Objectives: Family members and individuals affected by mental illness and addictions working with service providers to achieve a more comprehensive and effective continuum of mental health and addiction services.

Carney Hill Neighbourhood Centre

Includes: Beech Street and Hadih (Porter Street) Community House and South Fort George Daycare

Location: 2579 Victoria Street
Prince George B.C.
V2L 2M3
563-0858, FAX: 563-0807

Contact: Cathy Wiegand
Executive Director

Programs: Special events: Life skills programs, summer programs, Neighbourhood Enrichment (Community Garden Plot)

Parent Support: 1234 Active Parenting
Parent Support Circles
Nobody's Perfect

Clothing exchange/community kitchen/supply pantry/sports equipment lending/movie nights

2 group day cares; afterschool care for K-7; 1 developmental pre-school; pre-school for Aboriginal children who are at-risk.

Carrier Sekani Family Services

Location: Porter House Community Centre
2105 Pine Street
Prince George, B.C.,
250-564-0997

Contact: Darlene Dunn or Jaylene Bourdon

Program(s) Bridges to Employment

Purpose of training:

- To teach daily living strategies to students and to enhance communication skills
- To assist clients with dealing with the issues in their lives which are barriers to employment
- To provide access to specific job training experiences

Skills development:

- Basic communication
- Budgeting and home management
- Grief and loss
- Certification for
 - Food Safe
 - First Aid
 - First Host
 - WHMIS
 - Serving it Right
- Job readiness
- Computers
- Two week placement
- Post Secondary Orientation
- Introduction to the Trades field

Entry requirements

- Aboriginal ancestry is an asset
- Must be 16 or older and out of school for at least 6 months
- Must be unemployed, underemployed or seeking education
- Must have identified themselves as personal barriers that prevent them from obtaining further education or employment
- May be self referred or referred by other agencies
- Criminal record check
- Interview process

Baby Group Open group for parents with new born children to one year olds. Growth and development, safety, illness, and self-care.

DRAFT

College of New Caledonia

Location: 3330-22nd Avenue
Prince George, B.C., V2N 1P8
250-562-2131

Contact: CNC Admissions office

www.cnc.bc.ca

Program(s): University Transfer, diploma, technical and vocational programs

(1). Adult Basic Education (College and Career Preparation)

- Acquire basic literacy in language and math
- Finish your high school education
- Acquire skills and prerequisites for other College courses

CCP courses as prerequisites to other college courses, or to obtain Adult Basic Education (ABE) certificates—Fundamental, Intermediate, or Advanced. You can also use them to gain a BC Adult Graduation Diploma, also known as an Adult Dogwood.

Admission requirements

To take CCP, you must be at least 18 years old. To make sure you start at the right level, you must take an assessment test that covers English, math, and science. The test just provides information on which skills you need to refresh or learn — it's not a pass/fail test.

Program outline

Courses are offered in English, math, sciences, computer studies, and Canadian studies, at four levels:

- Fundamental
- Intermediate
- Advanced
- Provincial

These levels roughly relate to high school as follows:

- Intermediate: Grade 10
- Advanced: Grade 11
- Provincial: Grade 12

(2.) BC Adult Graduation Diploma

- Full-time or part-time
- Ongoing start dates
- Length varies
- Free tuition, but some other costs may apply
- Lakes District, Mackenzie, Prince George, Quesnel, and Vanderhoof

There are several ways to get your BC Adult Graduation Diploma:

- Taking college courses in an adult environment
- Taking courses at a high school
- Taking courses through distance learning
- Combining courses and credits from both high school and college.

Admission

You must be at least 19 years old.

To get started, contact your local CNC campus to arrange an assessment of your needs. Be sure to bring school transcripts to your appointment.

Graduation requirements

You must complete either 20 credits in the school secondary system or five courses in the post-secondary (college) system, or a combination of the two.

(3). ESL English as a Second Language)

- Full-time or part-time
- Starts: September, January and May
- 15-week semester
- Approx. tuition fees: Fees vary
- Prince George campus

Admission requirements:

1. You must be at least 18 years of age, or turn 18 during the first semester at CNC.
2. To ensure you enter the program at the appropriate level, you must complete a placement test before admission. ESL instructors will also interview you before program placement.

Note: TOEFL is not required for admission to ESL.

Program/agency objectives: The College of New Caledonia, as a comprehensive college, provides access to lifelong learning and facilitates the achievement of personal and educational goals.

Elizabeth Fry Society

Location: 1575-5th Avenue
Prince George, B.C.
V2L 3L9

Contact: 250-564-1113 phone
250-563-8765 fax
www.pgefry.bc.ca

Programs: Courtwork Services
Revised Bridges Employment Program
Transition House
Victim Support Services
Women's Counselling Program
Women's Outreach

DRAFT

Immigrant and Multicultural Services Society (IMSS)

- Location:** 1633 Victoria Street
Prince George, B.C., V2L 2J7
250-562-2900
250-563-4852 FAX
imss.pg@shawcable.com
- Contact:** Baljit Sethi
- Programs:** Settlement and integration services for new immigrants and refugees, including English as a Second Language (ESL), computer training, and employment and career counseling.
- employment assistance program;
 - interpreter/translation services;
 - referrals, information, and orientation about the Canadian system, values, and traditions;
 - cross-cultural counselling;
 - race-relations and anti-racism programs;
 - cross-cultural education and information services;
 - youth programs;
 - seniors' and women's programs;
 - partnership and support in multiculturalism programs to other institutions and organizations;
 - greater Prince George areas -- telephone services delivered in neighbouring communities; and Diversity training to professionals and frontline workers
- Objectives:** The mandates of IMSS are to provide settlement services to immigrants and refugees and to promote multiculturalism for cross-cultural understanding and racial harmony.

Prince George Native Friendship Centre Learning Circle Literacy Program

Location: Prince George Native Friendship Centre
1600 Third Avenue
Prince George B.C., V2L 3G6
250-564-3568
250-564-0924 Fax
literacy@pgnfc.com

Contact: August Horning

Programs: Learning Circle Literacy Program
One- on- one tutoring
GED, Dogwood
Grade level assistance/teaching

Objectives: To raise literacy levels for adults, both Aboriginal and non
Aboriginal populations 19 and over.

Learning Difficulties Centre

Location:	785 Patricia Boulevard P.O. Box 1068 Prince George V2L 4V2 250-564-8011 250-564-8055 fax ldadmin@telus.net
Contact:	Administration office
Programs:	<p>A tutoring centre for individual therapeutic tutoring based on a multisensory approach. The Orton-Gillingham method of multisensory instruction is used.</p> <p>A training centre for the provision of qualified training and professional development workshops</p> <p>A resource centre, computers, research materials and general information for tutors, families, Society members and the general public.</p> <p>One-on one tutoring for:</p> <ul style="list-style-type: none">• Language• Math
Objectives:	Focus on providing alternative choices in learning to improve and individual's emotional and cognitive sense of self-worth. To provides access to year-round remediation of learning difficulties for all ages. Cost: \$30.00/hour

Northern Health Authority

Location: Northern Health Unit
1444 Edmonton Street
Prince George B.C., V2L 6W5
250-565-7311
250-565-6674 (Fax)

Contact: Telephone for program contact

Programs:

- Children and Families Team
- Families Count Program
- Families First Program
- Parent Teen Mediation Services
- Structured for Success
- Community Nutrition Program
- Family Education Outreach Program
- Project Family North

Northern Family Health Society

Location: 2666 Queensway
Prince George, B.C., V2L 1N2
250-561-2689
250-562-5459 Fax
<http://www.nfhs-pg.org/index.html>

Contact: Tricia Wright
tricia@nfhs-pg.org

Programs:

- Community action program for children
- Complex Developmental Behavioural Conditions Assessment and Support Services
- Parent Child Mother Goose
- Northern Employment Solutions
- Healthiest Babies Possible
- Youth Works
- Fetal Alcohol Spectrum Disorder Resource Center
- Parent Support Programs

Parent Support Services

Location: 516- 1600 3rd Avenue
Prince George, B.C., V2L 3G6
250-561-0607
e-mail parentnorth@shaw.ca
www.parentsupportbc.ca

Contact: Julie Bergen

Programs: Active Parenting

- *1, 2, 3, 4, Parents*. Children 1-4 understand the development of their children and learn basic discipline methods.
- *Active Parenting Now* assists parents of children ages 5-12 as they help their children develop self-esteem, courage and responsibility
- *Active Parenting of Teens* aids parents in developing clear communication and using respectful discipline, with attention to the issues teens are facing.

**Childminding and transportation assistance may be available.

S.T.E.P. (Systematic Training for Effective Parenting)

For parents of children 7-12 years, who can learn about

- Encouragement
- Listening and talking to your child
- Cooperation
- Discipline that makes sense

Cost: about \$30.00 includes workbook. Subsidies available. Childminding available upon request. This program is offered spring and fall at Porter Street Community House.

Hand –in- Hand.

- Quality early learning, activities and care for children while their parents attend education and support groups.

Grandparents Raising Grandchildren Support Circles

- weekly support and information meetings for grandparents and other relatives who are the primary caregivers of grandchildren

Julie publishes “*The Village*”, which is a registry of programs, resources and services for parents in the community. Obtain by e-mail request, (parentnorth@shaw.ca); call the office 250-565-2301; go to the office at 516 3rd avenue where hard copy is by their door; or go to www.parentsupportbc.ca and click on ‘what’s new’ for the most current version.

DRAFT

Prince George Council of Seniors

Location: 1055-5th Avenue
Prince George BC V2L 5K7
info@pgcos.ca
10:00 am-3:00 pm (Monday-Friday)
Phone: (250) 564-9100 Fax: (250) 564-9155
www.pgcos.ca

Contact: Lola-Dawn Fennell Manager

Programs: Community Response Network (CRN)
Computer Access Program (CAP)
Dentures Fund Program
Falls Prevention Initiative
Handyman Services for Seniors
Housing Guide and Housing Initiatives
Meals on Wheels
Seniors Information Line
Seniors Outreach Program
Yearly Tax Clinic

Workshops are offered at various times, and can be accessed by phone, newspapers etc. These opportunities can be, but not inclusive: health related, diabetes, heart health, fall prevention, abuse issues as well as financial literacy. Information line will have this information 250-564-9100.

Prince George Public Library

Location: Bob Harkins Branch (Downtown)
887 Dominion Street
Prince George, B.C., V2L 5L1
250-563-9251

Nechako Branch
6547 Hart Highway
Prince George, B.C., V2K 3A4
250-962-9710

Contact: Visit, phone or website: www.lib.pg.bc.ca

Programs: See website for available programs and dates.

Programs include:

- Grandparents Reading Corner
- Family Storytime
- Active Parenting
- Basic Computers, Internet and e-mail

Programs run at both locations.

Library has 208,000 items in collection including:

- Books
- Graphic Novels and comics
- Magazines

- Newspapers (online and in print)
- Videos
- Compact discs (music)
- Books on tape
- Books on C.D.
- DVDs
- Cassette tapes
- Telephone books
- Maps
- Other Language material
- Learn a Language- language tapes
- Government publications
- Local History
- Online Databases
- Literacy Collection

The Prince George Public Library has a Literacy Collection containing books, audiocassettes, and videos. Materials in the collection cover grammar, reading, writing, phonics, vocabulary, and math. The Literacy Collection also contains easy to read novels as well as easy reading material in the areas of life skills, job skills, religion, sciences, and social studies. Tutorial resources are also available. These materials can be used to improve literacy skills for people whose first language is not English.

Royal Canadian Mounted Police

Location: 999 Brunswick Street
Prince George B.C., V2L 2C3

Contact: 250-561-3300

Programs: D.A.R.E. Program--goes into grades 5/6 to educate students on refusal techniques against drugs
B.R.A.V.E. Bully resistance
Block Watch
Citizens on Patrol/Speed watch
Park Watch
Home Security Audits
Elder Abuse Protection
Friendly Phones
Crime Prevention Education
Court Watch

School District 57

Continuing Education

Centre for Learning Alternatives

Location: 1270 2nd Avenue, Prince George, BC

SD57 offers learning opportunities for adults (over the age of 19) with face to face tutoring and support in our CLA Learning Centre at 1270 2nd Avenue. We offer upgrading in Mathematics and English as well as courses leading to graduation in the Adult Dogwood Program. Contact Joanne Shaw @ 250.564.6574 or jshaw@sd57.bc.ca to make an appointment to get started on your studies today!

Information about Graduated Adults

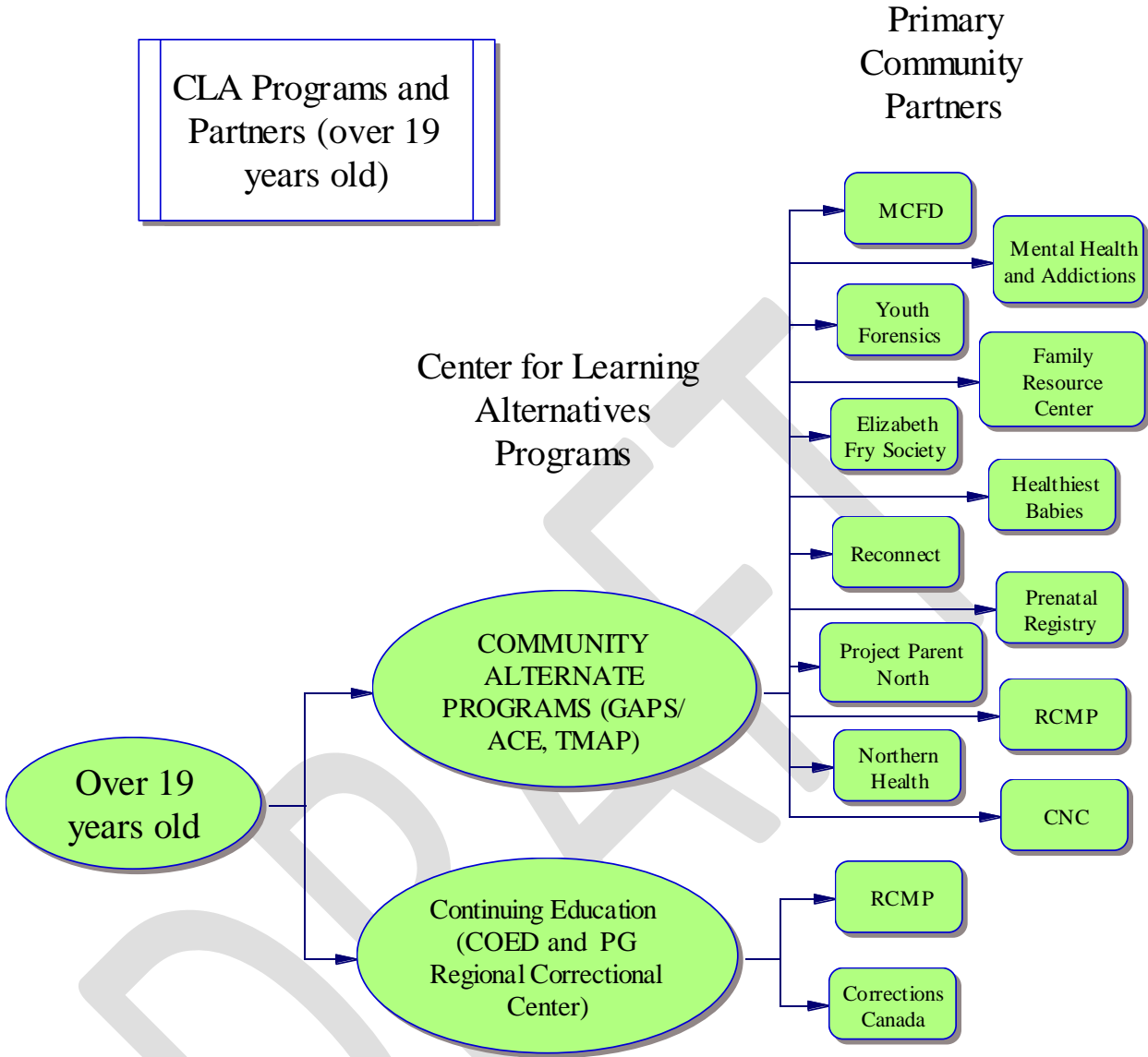
On September 1, 2008 the Ministry of Education will offer free courses for graduated adults who enrol in continuing education or face-to-face programs. Provincial funding for free courses will be limited to the subject areas of computer studies, education and career planning, English, First Nation studies, mathematics, sciences and social studies.

See chart on next page for more information.

Acronyms used:

TEAM	Together Everyone Achieves More (formerly GAPS/ACE)
TMAP	Teen Mothers Alternative Program
ASP	Alternate School Program
TAPS	Transitional Alternative Program Secondary

CLA Programs and Partners (over 19 years old)



South Fort George Family Resource Centre

Location: 1200 LaSalle Avenue
Prince George, B.C.
V2L 4J8

Contact: 250-624-9440 phone
250-614-9448 fax
frc@pgefry.bc.ca

Programs: Community Association

- Community Kitchen
- Gymnasium and Stage
- Meeting Room and Family Room
- FREE clothesline and Toy room

Families Count Program
Northern Health Family Clinic
Structured for Success

United Way Prince George

Location: United Way Office
1600 Third Avenue
Prince George B.C., V2L 3G6
250-561-1040

Contact: Trevor Williamson

Programs:

Leadership Development

Provides training and supports to develop effective leadership of not-for-profit voluntary agencies by

- conducting an Organizational Training Needs Assessment
- designing a training program to meet your needs
- utilizing resources
- workshops
- management assistance
- facilitation
- resource library

Board Basics

- Board responsibilities
- Definition of “what is a board”
- Overview of responsibilities of board members
- Board Operations
- Running effective meetings
- Legalities & interpersonal relationships

Planning and Goal Setting

- Definitions of mission statements, goals, objectives and action plans
- Focusing your agency’s direction

Fundraising

- Public relations and fundraising
- Current trends in fundraising
- Actual events

Marketing

- Develop an actual marketing plan
- Understanding the basics of marketing

Community Support Initiatives - a response to the economic downturn in the forest industry

Days of Caring

Days of Caring support organizations to receive provided volunteer goods and labour, generally provided by employees, business, businesses and corporations, to programs and agencies in the community. United Way plays the role of 'broker' in the identification, coordination and leadership support for the projects and volunteer groups to meet the need.

Seeing is Believing Tours

Seeing is Believing Tours are provided to employee groups to provide them a 'first-hand' experience with the programs and services supported by United Way investments. In the past year, employees of Northern Health and City of Prince George have taken advantage of the program.

Transit Assistance Program

United Way recruitments organizations and coordinates the distribution of Prince George Transit Authority bus tickets to persons to be used for emergency transportation. The tickets are delivered through nearly 40 community health and social service agencies and assist those with limited income. They are intended for emergency transportation for food, clothing and shelter, health and seeking employment. Some 7500 tickets are distributed annually.

Summer Camp Programs and Activities

United Way sponsors and delivers a 6-week summer camp program for 'inner-city' school-aged children. The program includes learning, recreation and nutrition and provides camp to some 180 to 200 children.

Information and Referral Services

United Way has proposed the creation of a province-wide 211 telephone response for those seeking services from community health and social service organizations. The system would reduce costs and provide for immediate response. Annually United Way fields 1000 calls from individuals seeking assistance to locate community health and social services.

Financial Administration & Consultation Services

United Way provides, at no cost, consulting services for self-help and emerging organizations to assist new and fledgling organizations obtain society registration and charitable status. The United Way supports these groups through direct consultation for programs and services - some groups include: New Hope Society; Children, Families and Community Society; PEERS Prince George.

United Way supported 3 organizations in the past year and annually some 7 to 10 organizations on an occasional basis. The groups seek assistance to deal with community issues such as: gay and lesbian needs; sex trade workers; physically and mental disabilities; substance abuse; services to children.

The groups are volunteer-directed and the programs are delivered by volunteers. Their organizational and administrative capacity is limited. More specifically United Way's goal is to enable them to build capacity leading to the creation of autonomous organizations.

See also *Success by 6*.

University of Northern British Columbia

Location: 333 University Way
Prince George, B.C., V2N 4Z9
250-960-5555
www.unbc.ca

Contact: Registrar's Office 250-960-6307

Programs: 25 undergraduate Degree programs
Masters degree and Doctoral programs
Student Success Department offers learning support for students. 250-960-6360
Northern Advancement Program for Aboriginal students, contact: Paul Michel 250-960-5595
Continuing Education Studies
<http://www.unbc.ca/continuingstudies>

Vantage Vision and Reading

Location: 1777 Yew Street
Prince George, B.C., V2L 2X3
250-563-1136
250-563-3465 Fax
e-mail pg.rhs@telus.net

Contact: Milly Saville

Programs: Vantage Reading Program

This program assesses and remediates vision skill deficits which impede the reading and comprehension process.

Assessments are done by Milly Saville, augmented by Dr. Brenton Loose, optometrist, when physical eye problems are noted.

Parents or a designated instructor carry out the program, which is carried out daily (5X week) for six weeks.

Program costs: Screening consultations are free. If an individual appears to be a candidate for therapy, the assessment is \$45.00. Tutors are then trained for that specific program. A re-assessment is done every two weeks to determine program changes. Any further training required for changes is given at each assessment. These sessions are \$25.00 each.

N.B. This program takes children and adults.