

CAREER DEVELOPMENT NEWSLETTER

SPECIAL POINTS OF INTEREST:

- **JUNIOR INITIAL ATTACK STUDENT PARENT MEETINGS—WILLIAMS LAKE**, Dec. 6th at 7:00pm in the CSS cafeteria—**100 MILE HOUSE**, Dec. 11, 6:00pm at PSO
- **HEAVY METAL ROCKS LOOK FOR APPLICATIONS EARLY FEBRUARY.**
- **RCMP YOUTH ACADEMY IS SCHEDULED FOR MARCH 16TH—22ND, 2013**
- **JUNIOR ACHIEVEMENT PROGRAMS IN ALL THREE HIGH SCHOOLS THIS YEAR.**

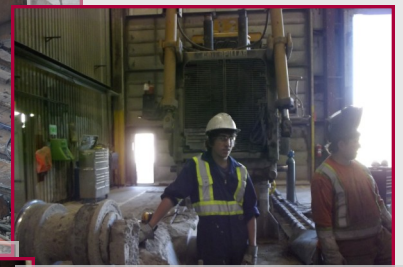
SSA STUDENTS AT MOUNT POLLEY

A BC Mining Task Force pilot project has six students from the School District ACE-IT program at Mount Polley in Likely completing hours towards their apprenticeships. Two students are working in each of the following trade areas; Electrical, Heavy Duty Mechanics and Welding.

The students are registered as Secondary School Apprentices and have completed at least 480 hours towards their certification.

Students that complete a minimum of 480 hours, achieve a C+ average in their Grade 12 courses and five months after graduation are working in the trade or have 1,100 work based hours recorded with the Industry Training Authority, qualify to receive a \$1,000 scholarship.

Students in grade 10 and 11 can apply



now to take one of the ACE-IT programs in their grade 12 year. Currently, applications are being accepted for Heavy Duty Mechanics, Residential Construction, Electrical, Weld-

ing and Professional Cook 1. Students need to make contact with the Career Centre staff in their schools to begin the application process.



TRADE FORUM—DEC 5, 2012 WILLIAMS LAKE MAY 1, 2013 100 MILE HOUSE



Students in grade 10, 11 & 12 are invited to attend the Trade Forum in Williams Lake on Dec. 5th, 2012 and in 100 Mile House on May 1, 2013.

Student will pre-register for the forum through their school Career Centre. Applications will be made available approximately a

month before the event. Student will have the opportunity to meet with six trades people during the morning sessions. In Williams Lake, seventeen local business have stepped forward and will be sending at least one tradesperson to speak to the students. Students will



be able to choose from carpenter, millwright, floor layer, welder, heavy duty mechanics, RV service technician, parts person, lineperson, funeral director, professional chef, hair stylist, esthetician, retail meat cutter and auto service technician.



STUDENTS PREPARE FOR RCMP YOUTH ACADEMY



RCMP Annie looks out at the main hallway of Columneetza recruiting students for the 2013 RCMP Youth Academy. Local RCMP detachment Cst. Shearer and Career Development Assistant Lisa Kraus visited in October all three district high schools and Skyline/Grow Alternate program to meet with students interested in attending the 2013 camp. All students interested in applying must com-

plete the Application Package. All students that hand in the completed application package by the Nov 8th deadline will still have to undergo a Criminal Records check, an interview as well as a fitness test to be considered for the camp. 24 students will be accepted into the camp that draws students from Williams Lake, 100 Mile House, Ashcroft, Lillooet and Lytton.

In Career Education, we engage and inspire youth to achieve their full potential in school, career and life.

COLUMNEETZA CAREER CENTRE IS OPEN
MONDAY TO FRIDAY
MS. THOMSON
 WEDNESDAY TO FRIDAY
MS. HALL
 MONDAY & TUESDAY
MS. KRAUS
 THURSDAY & FRIDAY
 IF YOU HAVE ANY QUESTIONS SEE ONE OF THE CAREER CENTRE STAFF OR CALL 250-392-1915



WHAT DO YOU WANT TO DO AFTER HIGH SCHOOL?

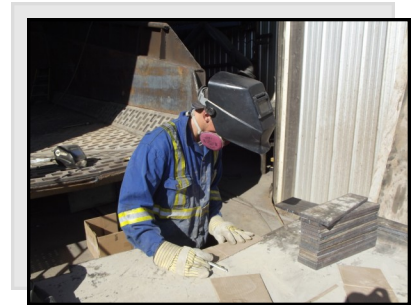
With over 30,000 job titles to choose from, it is no wonder that it is hard to identify your ideal career path. Engaging in new experiences gives you the chance to “test drive” different career ideas and enhance your self-knowledge, making it more likely that you will find a truly satisfying and appropriate career path.

Self-assessment is the first and the most important step in choosing an occupation or major, plan-

ning your career, and starting a job search. The biggest question is “What do you like to do”? Why not go out on work experience and “test drive” a career area? You may find a career you like or one you definitely do not want to pursue.

All high schools in the school district have the opportunity for students to explore and engage in work experience

opportunities. Placements are available in over 600 businesses in the Cariboo Chilcotin region. Students need to make contact with their school Career Centre to arrange a work placement.



“Find out what you like doing best and get someone to pay you for doing it.” (Katherine Whitehorn)

GRADUATIONS TRANSITIONS: Graduation Transitions is an opportunity for students to reflect on their knowledge and abilities and plan for life after graduation by collecting evidence of their achievements in the following required areas: **Personal Health:** Daily physical activity and a commitment to fitness and physical and emotional well-being are key to healthy living. **Community Connections:** Students gain employability skills through participation in at least 30 hours of work experience and/or community service. Life after graduation includes the world of work and community responsibilities. **Career and Life:** Students are required to explore personal and career goals during their secondary school years and create a plan for life after graduation. The following web link will take you to the **6 steps** to complete your Graduation Transitions in order to graduate in June 2013.

[HTTP://CONFLUENCE.SD27.BC.CA/DOWNLOAD/ATTACHMENTS/2916446/PG%201%20GRAD%20TRANSITIONS%202012%202013.PDF](http://confluence.sd27.bc.ca/download/attachments/2916446/pg%201%20grad%20transitions%202012%202013.pdf)