

THE IMPORTANCE OF MINING IN BC

BOTH HISTORICALLY AND IN THE PRESENT, MINING IS ONE OF BRITISH COLUMBIA'S MOST IMPORTANT INDUSTRIES.

IT NOT ONLY CONTRIBUTES WEALTH TO THE PROVINCE, BUT IT CREATES **HIGH PAYING AND REWARDING CAREERS:**



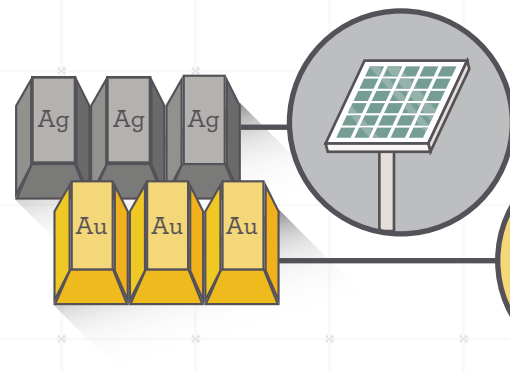
Gross mining revenues for the BC mining industry
\$8.5 BILLION

People employed in BC
10,720
(up from 10,419 in 2012.)

Average salary and benefits
\$114,600

PERHAPS EVEN MORE IMPORTANT, HOWEVER, IS WHAT THE MATERIALS FROM MINING ALLOW US TO DO:

GOLD AND SILVER



Silver is the **MOST CONDUCTIVE METAL** and is used in solar panels: on average, 20g of silver is in each individual panel.

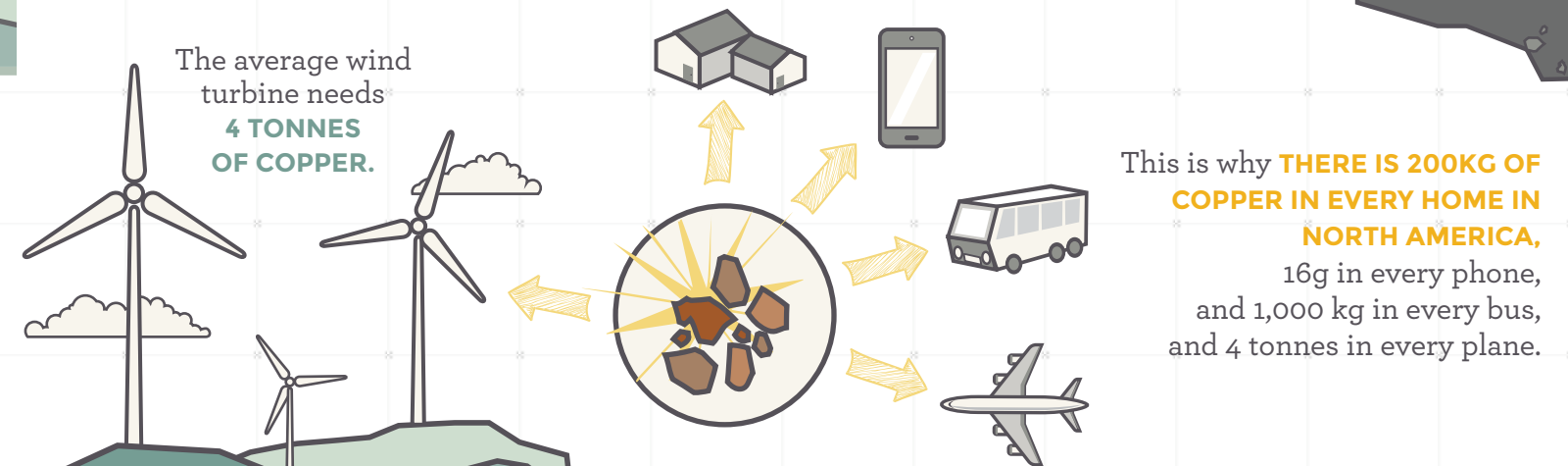
Gold is mission critical because it **DOES NOT CORRODE**. It is used for the most important electrical connections in phones, laptops, and other devices.

COPPER

Copper is one of BC's **MOST IMPORTANT** and valuable resources.

Copper is 100% recyclable, highly conductive and ductile. This makes it perfect for wiring and electronics.

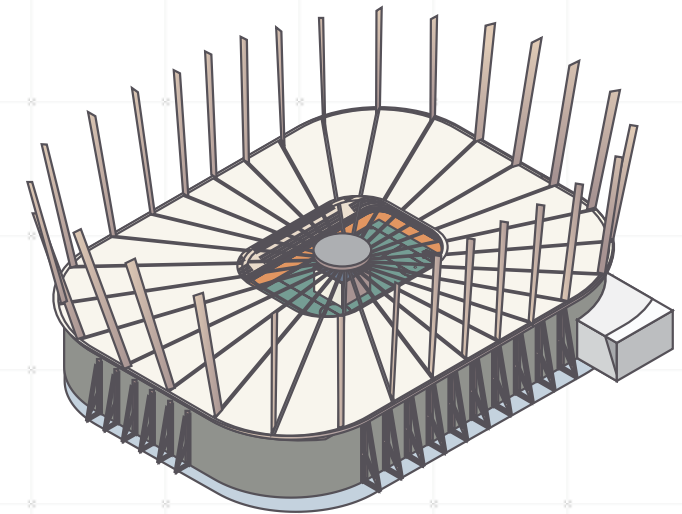
Copper is key for **RENEWABLE ENERGY**.



METALLURGICAL COAL

Different from thermal coal, met coal is used **PRIMARILY TO MAKE STEEL**.

To construct BC Place's retractable roof, it took **16,000 TONNES OF STEEL** to do the job.



AGGREGATES

Aggregates such as concrete, gravel, and sand are often the unsung hero in BC's mining space.

51,000 M³ OF CONCRETE was needed for Vancouver's Shangri-La tower, the tallest building in the city.

