



PROJECT UPDATE JANUARY 2017

In March 2016, you received an information package detailing the 50 per cent Project design of the 216th Street Interchange and Highway 1 Improvement Project and opportunities to participate in public consultation. The information package included a discussion guide, feedback form, directions to access the Project website and an invitation to the open house which was held March 31, 2016 at Alex Hope Elementary School in Walnut Grove.

The Engagement Summary Report and informational materials are available on the Project website at <http://www2.gov.bc.ca/gov/content/transportation/transportation-infrastructure/projects/highway1-216th>. The website provides maps and details about the Project design, pedestrian and cycling improvements, environmental upgrades and noise mitigation.

The basic scope of the Project includes:

- Constructing a new full movement, four-lane interchange at 216th Street with left turn lanes that will provide access onto eastbound and westbound Highway 1
- Providing separated pedestrian and cycling access across the 216th Street Interchange overpass
- Building one additional general purpose lane both eastbound and westbound on Highway 1 between 202nd and 216th Street (Total: 4 km)
- Completing extension of HOV ramps to and from 202nd Street

Based on consultation feedback, the following provides information on changes or studies to address public concerns.

Noise Mitigation

Further to the information provided in the consultation material, we plan to construct the following noise mitigation measures:

North side of Highway 1:

- A new 5.0 metre-high concrete noise wall from 206th Street to 208th Street (concrete was preferred as the material).
- A 5.0 metre-wide high concrete noise wall from 208th Street to 214A Street (concrete was preferred as the material)
- A 5.0 metre-wide high berm from 214A Street to 216th Street (initially shows as a wall in the consultation material)

South side of Highway 1:

- A new 3.0 metre-high berm from 206th Street to 208th Street (not initially shown in the consultation material).
- A 3.0 metre-high wood noise wall between 212th Street and 216th Street (as per the consultation material, this matches the existing sound wall).

NOTE: The berms and noise walls will all be constructed in the Ministry right-of-way. Both noise mitigation measures are designed to reduce highway noise levels by a minimum of five decibels to achieve the requirements outlined in the Ministry's Policy for Assessing and Mitigating Noise Impacts from New and Upgraded Numbered Highways (2014). Berms are equally effective as noise walls in mitigating noise from highway operations, and are generally preferred for their natural aesthetic.

Cycling and Pedestrian Access

The Ministry received community support for the proposed cycling and pedestrian accesses and separated bike lanes, which were designed to reduce conflict zones between cyclists, pedestrians and vehicles, and encourage safe infrastructure for all levels and abilities.

- The final Project design adds a 3.0 metre-wide multi-use pathway on the west side of the interchange overpass and north along 216th Street to Telegraph Trail (initially shown as a sidewalk on the consultation material). Both sides of the overpass structure, and along 216th Street north of Highway 1 to Telegraph Trail, will include a 3.0 metre-wide pathway, offering added safety for pedestrians and cyclists travelling in both directions and better accommodating future commuter cyclist growth.

Capacity Improvements on Highway 1

Consultation participants also expressed support for increased capacity and improved traffic flow on Highway 1.

- The final Project design adds a two-lane exit ramp from Highway 1 to northbound 200th Street to optimize efficiency for westbound traffic exiting Highway 1.

Environment and Air Quality

Consultation feedback was provided in regards to current air quality near the 216th Street Interchange and how this might change as a result of the Project.

- The Ministry retained Trinity Consultants, an environmental consulting firm specializing in air quality permitting and compliance assessments, to conduct a qualitative air quality analysis for Highway 1 and the 216th Street Interchange. The analysis concluded that the Project is not expected to result in significant air quality impacts. Their report is available on the Project website.

Traffic

In response to public concerns around the projected increase in traffic along 216th Street north of the interchange at Highway 1, the Project team recently received existing traffic data from the Township and the opening day traffic forecast of the surrounding road network. There is now a better understanding of the forecast traffic volumes along 216th Street and these findings are detailed in the Traffic Memo that is posted to the project website:

AVERAGE DAILY TRAFFIC VOLUMES FOR 216 TH STREET			
216 th Street Segment	Existing	Opening Day	2045 Horizon Year
Interchange – Telegraph Trail	100	11, 650	17,350
Telegraph Trail – 88 th A Avenue	4,200	7,100	8,950
North of 88 th A Avenue	4,000	4,000	4,200

The Township of Langley (the Township) has included additional works for 216th Street in its 2017 budget for local improvements. Information about these improvements is available in the October 17, 2016 Report to Mayor and Council on the Township's website at <https://tol.ca.legistar.com/LegislationDetail.aspx?ID=6493&GUID=7B1CD074-641D-4685-9A77-3680387E4191&Options=&Search>.

Project Schedule

The Ministry has issued a competitive selection process to retain a construction contractor, and anticipate selecting the successful proponent in February 2017. Construction will begin shortly after contract award, with substantial completion scheduled for fall 2019.

Project Updates

Quarterly Project updates with information about upcoming construction activities, including noise mitigation initiatives in your area, and milestones will be posted to the Project website. Please visit

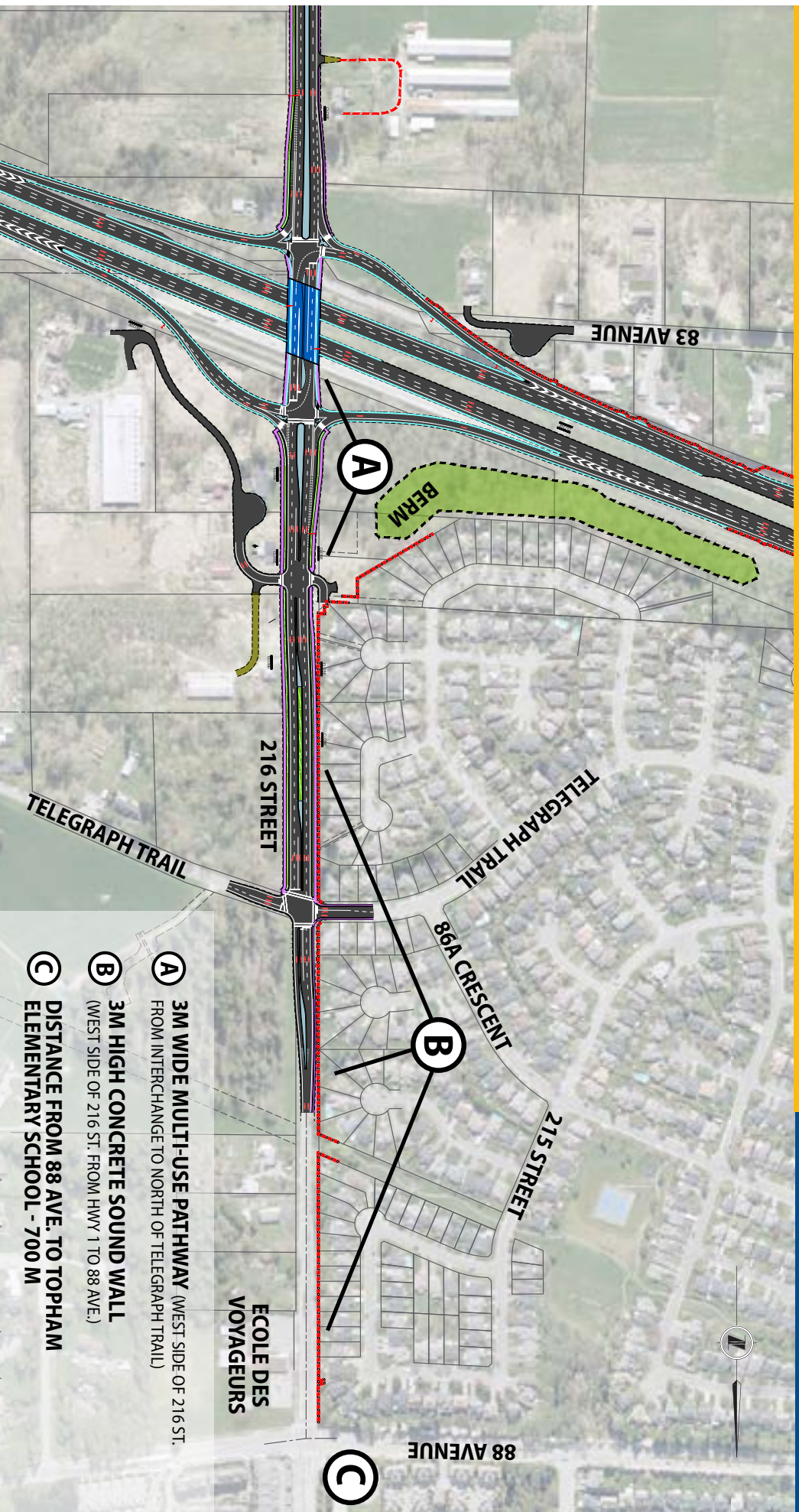
<http://www2.gov.bc.ca/gov/content/transportation/transportation-infrastructure/projects/highway1-216th>

and sign up to receive these Project updates by email. If you have questions, please email the Project team at 216interchange@gov.bc.ca.

Additional maps of the project limits and design details can be found on the website:

<http://www2.gov.bc.ca/gov/content/transportation/transportation-infrastructure/projects/highway1-216th>.

216TH STREET INTERCHANGE AND HIGHWAY 1



A 3M WIDE MULTI-USE PATHWAY (WEST SIDE OF 216 ST. FROM INTERCHANGE TO NORTH OF TELEGRAPH TRAIL)

B 3M HIGH CONCRETE SOUND WALL (WEST SIDE OF 216 ST. FROM HWY 1 TO 88 AVE.)

C DISTANCE FROM 88 AVE. TO TOPHAM ELEMENTARY SCHOOL - 700 M



Ministry of
Transportation
and Infrastructure

MINISTRY OF TRANSPORTATION
& INFRASTRUCTURE
South Coast Region

Mailing Address:
310 - 1500 Woolridge Street
Coquitlam BC V3K 0B8

Facsimile: 604-527-2222
Information: 604-527-3103
<http://www.gov.bc.ca/tran>