

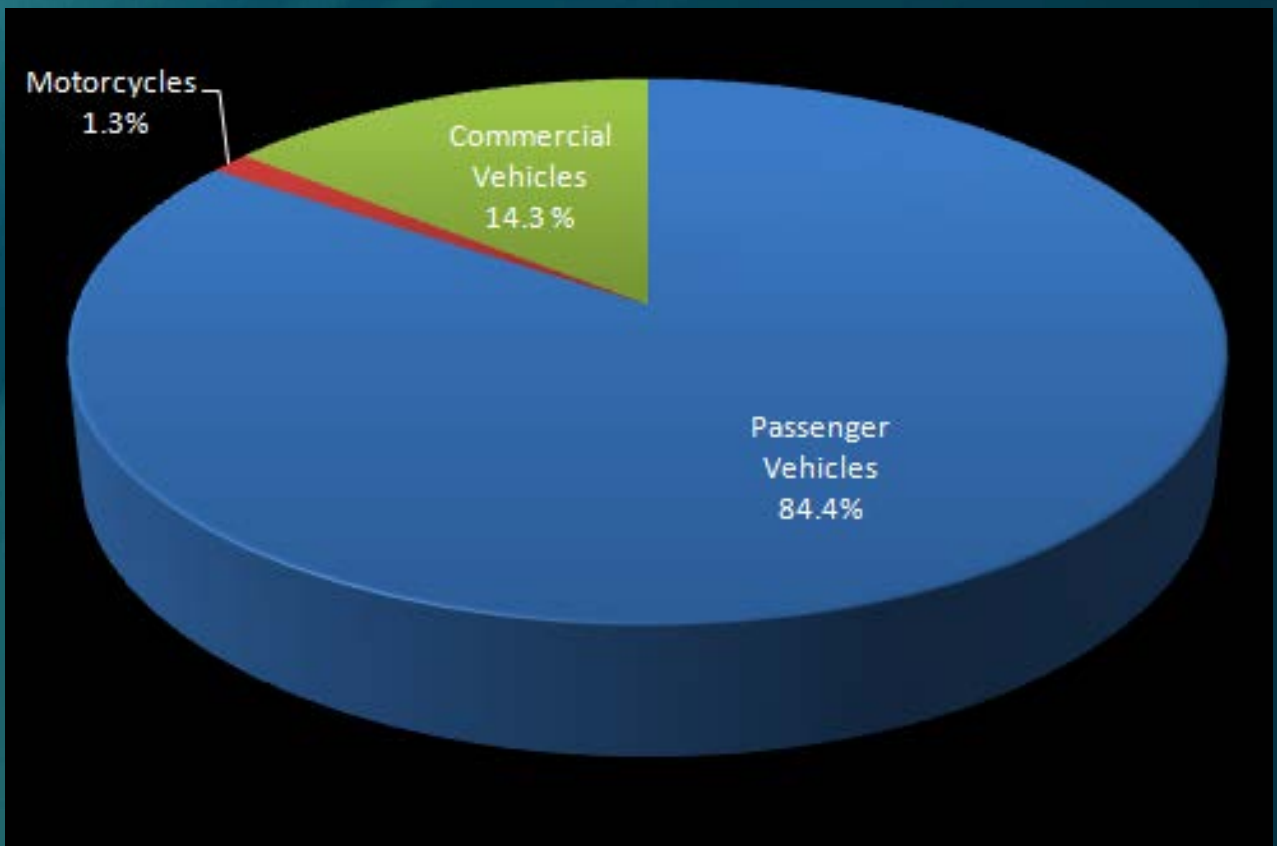
**The Ministry of Transportation and
Infrastructure
Open House November 7, 2013 for**

**Cariboo Highway 97
Dragon Lake Road To Quartz Road
Four-Laning**



Existing Conditions: Traffic Volumes 2012

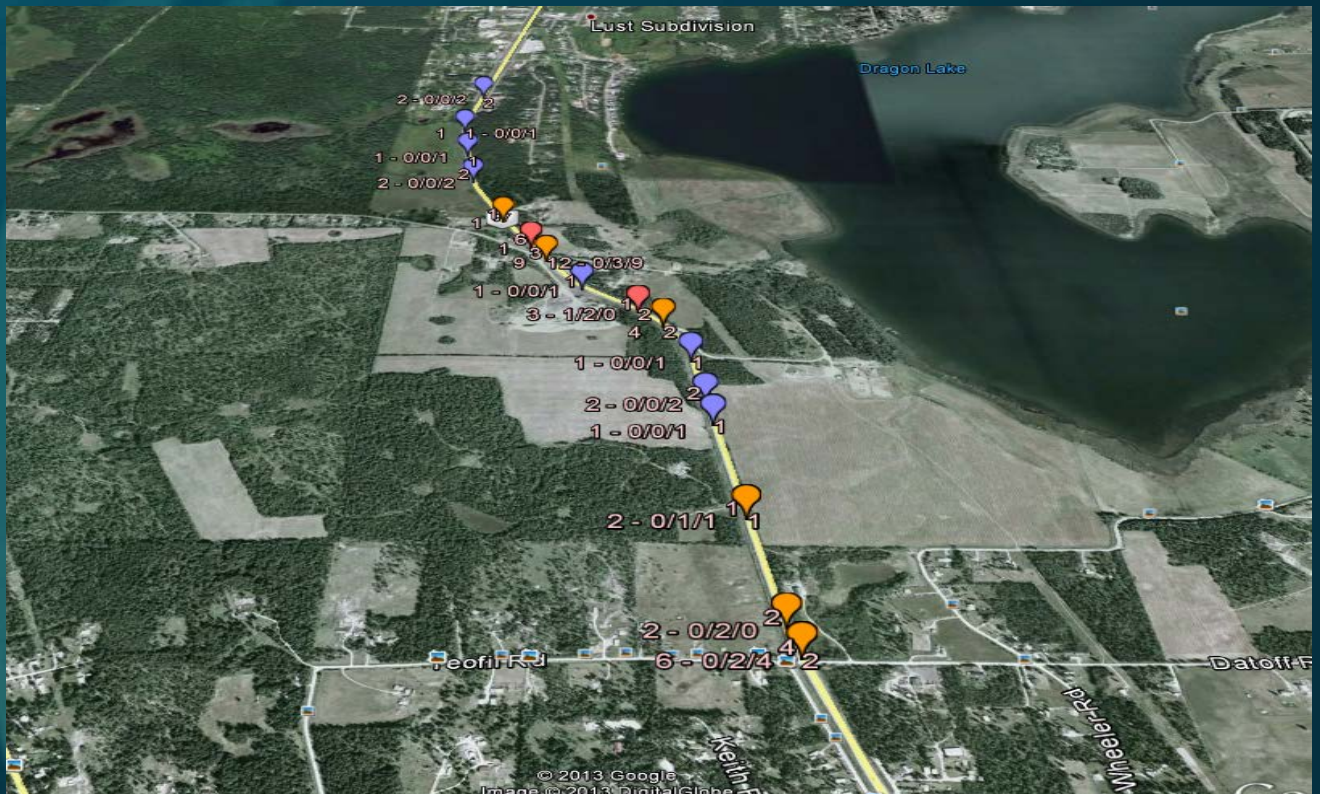
- Average 6,500 vehicles per day (vpd)



Existing Conditions:

Collision History

- 61 Collisions (between 2000 and 2012)
 - 2 fatalities
 - 47 Injured
 - 79 Total Vehicles and
 - 34 Property Damage Only Collisions
- Contributing Factors:
 - Inattention or Driving Without Due Care
 - Poor weather conditions
 - Increased driving speed for the current conditions
 - Driver Inexperience

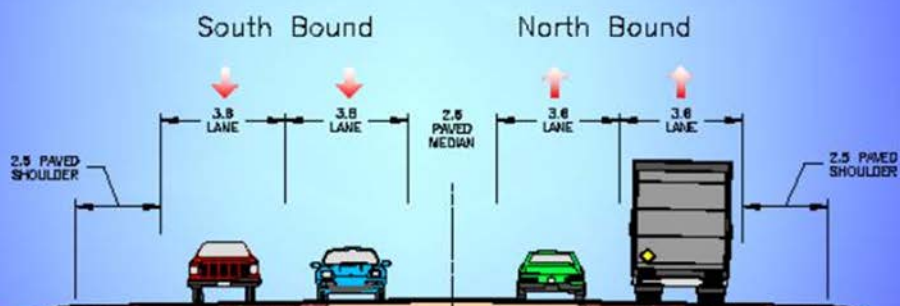


How Did We Arrive At This Concept?

- The planning of the highway improvements considers optimizing the following criteria:
 - Continuation of Recent Four-Laning to the South
 - Stakeholder input
 - Safety Improvements
 - Improve mobility along the corridor
 - Property and Agriculture Impacts
 - Alignment
 - Constructability
 - Traffic Management
 - Capital Costs

Design Specifics

- Upgrade 2.8 km to a four lane cross section
- Re-align Sales Road Intersection
- Provide illumination at Sales Road and Campsite Road Intersections
- Provide left turn lanes at Sales Road and Campsite Road intersections
- Providing a 2.6 metre wide centre median
- Providing 2.5 metre wide paved shoulders
- Construct 3.6 metre wide lanes
- Install rumble strips
- Install roadside barrier as required



Cariboo Highway No 97 TYPICAL CUT & FILL SECTION

Benefits

- Extension of four-lane highway to improve safety, mobility, and capacity
- Four lanes with wider shoulders, paved median, rumble strips and clear zone areas improves safety and reduces collisions
- Intersection improvements provide safer access on and off Highway 97
- Improve alignment to provide better sight lines



NEXT STEPS

- Proceed with the design
- Continue consultation with First Nations
- Conduct value engineering study of the design
- Continue consultation with the stakeholders and Property Owners
- Conduct a road safety audit

