

Table of Contents

1	SOUTH OKANAGAN	1
1.01	Definitions	1
1.02	Highway Crossing Infrastructure	2
1.03	Invasive Plants Management	4
1.04	Lane Closures	6
1.05	Roadside Catchment Appurtenances Maintenance – Keremeos Slide Wall	8
1.06	Salt Containment Infrastructure Maintenance	10
1.07	Vehicle Inspection Station Maintenance	13
1.08	Multi-Lane Snow Removal – Okanagan Connector	15

1 SOUTH OKANAGAN

1.01 Definitions

In these Local Area Specifications, capitalized terms will have the corresponding meanings as set out in Article 1 of this Agreement and Section 1 of this Schedule 1 ("Specifications"), and as set forth below:

"Invasive Plants" means any invasive alien plant species that has the potential to pose undesirable or detrimental impacts on humans, animals or ecosystems.

"Salt Containment Infrastructure" means a storage facility, including all of its components that is used for the storage and loading/unloading salt for winter maintenance operations including, but not limited to the salt shed, fabric/steel roofing, pit floor, evapotranspiration liner, containment pad, and skirt.

1.02 Highway Crossing Infrastructure

1.02.1 Outcome

To provide safe passage of pedestrians and animals underneath or beside a Highway.

1.02.2 Routine Maintenance Services

- PM1.02.2-1** Respond immediately to restrict all access to Highway Crossing Infrastructure, as directed by the Province.
- PM1.02.2-2** Repair or replace immediately, as directed by the Province, any damaged or deteriorated Highway Crossing Infrastructure that has been structurally compromised, as determined by the Province.
- PM1.02.2-3** Repair or replace within 3 months, any damaged or deteriorated Highway Crossing Infrastructure that has not been structurally compromised, as determined by the Province.
- PM1.02.2-4** Remove Debris immediately from the surfaces of floors, pedestrian paths or stairways.
- PM1.02.2-5** Remove Accumulations, surface contaminants and chemicals by June 30th of each calendar year from all surfaces.
- PM1.02.2-6** Remove Debris within 1 month that impedes the passage of animals in animal accessed Highway Crossing Infrastructure.

1.02.3 Quantified Maintenance Services

- PM1.02.3-1** Repair within 24 hours damaged or deteriorated surfaces on underpass floors, pedestrian paths or stairways.
- PM1.02.3-2** Repair within 6 months other damaged or deteriorated surfaces.

Specific Requirements:

- a) Maintain Highway Crossing Infrastructure within Rest Areas in accordance with the response of the adjacent Highway Classification.

1.02.4 Materials and/or Procedures

Refer to Subsection 1.6 of this Schedule 1 ("Specifications").

Additional material and/or procedures requirements are as follows:

- a) Use materials in accordance with the same type and quality on the existing Highway Crossing Infrastructure.

1.02.5 Routine Maintenance Services Cap

\$50,000 – for each occurrence, the cost to repair or replace Highway Crossing Infrastructure.

1.02.6 Warranty

Refer to Section 3 of this Schedule 1 (“Specifications”).

1.03 Invasive Plants Management

1.03.1 Outcome

To minimize the introduction and spread of Invasive Plants on Highways and Gravel Pits.

1.03.2 Routine Maintenance Services

PM1.03.2-1 Meet annually, with the agency conducting Invasive Plant management for the Province, during development of the Quantified Maintenance Services to coordinate planned activities.

PM1.03.2-2 Inspect all Gravel Pits and material sources annually to ensure they are free of Invasive Plants.

PM1.03.2-3 Report Invasive Plant conditions to the agency conducting Invasive Plant management for the Province, as follows:

Performance Criteria	Response
a) Prior to the disturbance of knotweed species that restricts Sight Distance or creates a condition that is unsafe or has the potential to become unsafe	immediately
b) Any Invasive Plant infestations on Highways and Gravel Pits	2 d

Notes:

- 1) Only the exposed, active areas of the Gravel Pits are to be considered.

1.03.3 Quantified Maintenance Services

PM1.03.3-1 Seed specific areas of exposed soils exceeding 1 metre up the Shoulder sideslope and the backslope due to ditch maintenance.

Notes:

- 1) The Standard Specifications for Highway Construction describes the revegetation requirements including, but not limited to blending, seed analysis and application timing.

1.03.4 Materials and/or Procedures

Refer to Subsection 1.6 of this Schedule 1 ("Specifications").

Additional materials and/or procedures requirements are as follows:

- a) Comply with the Best Practices for Managing Invasive Plants on Roadsides;

- b) Incorporate Invasive Plant management when planning and performing Quantified Maintenance Services;
- c) Seed side-cast ditch materials;
- d) Seek approval from the Province if disturbance of knotweed species is required;
- e) The Contractor may submit a plan for approval by the Province for the use of herbicides, as a control measure for knotweed or other Invasive Plants;
- f) Herbicides are to be applied by a certified pesticide applicator;
- g) Do not use gravel materials contaminated with Invasive Plants, unless a rectification process is submitted and approved by the Province; and
- h) Report Invasive Plants to the agency conducting Invasive Plant management for the Province online or using the Province's smartphone application or the provincial toll-free service.

1.03.5 Warranty

Refer to Section 3 of this Schedule 1 ("Specifications").

1.04 Lane Closures

1.04.1 Outcome

To keep Highway Users safe and provide the Services with minimal interruptions to the flow of traffic.

1.04.2 Routine Maintenance Services

PM1.04.2-1 Notify emergency services and BC Transit a minimum of 2 days in advance of all lane closures.

PM1.04.2-2 Advertise all lane closures a minimum of 2 days in advance on the local radio stations and in newspapers.

PM1.04.2-3 Use portable changeable message signs a minimum of 2 days in advance of all lane closures with a duration greater than 2 weeks.

PM1.04.2-4 Lane closures are prohibited as follows:

Highway	Starting	Ending	Between	Time Period
Highway 97	January 1	December 31	Indian Reserve Road and Greta Ranch (end of 4-lane Highway section north of Summerland)	0600 to 0900 1500 to 1900
Highway 97	June 1	September 14	Greta Ranch and Princeton Avenue	0600 to 2100
Highway 97	September 15	May 31	Greta Ranch and Princeton Avenue	0600 to 0900 1500 to 1900
Highway 97	May 1	September 14	Princeton Avenue and Highway 97C Interchange	0600 to 2100
Highway 97	September 15	April 30	Princeton Avenue and Highway 97C Interchange	0600 to 0900 1500 to 1900
Highway 97	January 1	December 31	Highway 97C Interchange and Kelowna Airport Road (north of Kelowna)	0600 to 2100
Highway 97	May 1	September 14	Kelowna Airport Road and Crystal Waters Road	0600 to 2100
Highway 97	September 15	April 30	Kelowna Airport Road and Crystal Waters Road	0600 to 0900 1500 to 1900
Highway 33	May 1	September 14	Highway 97 and Gallagher Road	0600 to 2100
Highway 33	September 15	April 30	Highway 97 and Gallagher Road	0600 to 0900 1500 to 1900

Notes:

- 1) The Province may modify the prohibitions in response to changing conditions, including but not limited to traffic volumes, new construction, or other changing conditions as the Province determines necessary; and

- 2) The Province may grant exemptions to the periods where lane closures are prohibited for work of short duration or minimal impact to traffic flow or for work that cannot be practically accomplished by means of artificial lighting.

1.04.3 Materials and/or Procedures

Additional materials and/or procedures are as follows:

- a) Ensure traffic control devices are not in an active position when closures are prohibited;
- b) All lane closures are prohibited from 1200 to 2400 hours on Thursdays when statutory holidays fall on a Friday;
- c) All lane closures are prohibited from 1200 to 2400 hours on Fridays when statutory holidays fall on a Monday;
- d) All lane closures are prohibited on multi lane Highways when traffic volumes exceed 1200 vehicles per hour per open lane for lanes adjacent to the work zone; and
- e) All lane closures are prohibited on multi lane Highways when traffic volumes exceed 1500 vehicles per hour per open lane for lanes not adjacent to the work zone.

1.05 Roadside Catchment Appurtenances Maintenance – Keremeos Slide Wall

1.05.1 Outcome

To provide an enhanced response exceeding the performance measures in General Specification 4.06 of this Schedule 1 (“Specifications”) to protect Highway Users and Highway infrastructure.

1.05.2 Routine Maintenance Services

- PM1.05.2-1** Repair immediately, as directed by the Province, any damaged or deteriorated Roadside Catchment Appurtenances that have been structurally compromised, as determined by the Province.
- PM1.05.2-2** Repair or replace within 3 months, damaged or deteriorated Roadside Catchment Appurtenances that have not been structurally compromised, as determined by the Province.
- PM1.05.2-3** Replace within 6 months, Roadside Catchment Appurtenances that are damaged or deteriorated beyond repair.
- PM1.05.2-4** Commence removal of accumulated rock, unconsolidated sediment or organic debris from the catchment area within 2 days, when it exceeds 50 percent capacity as determined by the Province.
- PM1.05.2-5** Remove annually, any accumulated rock, unconsolidated sediment or organic debris from the catchment area behind the entire length of the Roadside Catchment Appurtenance.
- PM1.05.3-6** Remove any accumulated rock, unconsolidated sediment or organic debris from the catchment area, as directed by the Province.

Notes:

- 1) The Roadside Catchment Appurtenance and catchment area is located along the north side of Highway 3, approximately 9 kilometres west of Keremeos. It is 600 metres in total length and comprised of the following:
 - 300 metres of 4-block high padded wall;
 - 100 metres of 2-block high non-padded wall;
 - 300 metres of 690 mm concrete retaining barrier in front of the 4-block high padded wall section;
 - 300 metres of 810 mm concrete median barrier in front of the 2-block high non-padded wall section and the remaining length; and
 - 200 metres of a designed and expanded ditch catchment area.
- 2) The total capacity of the catchment area is measured as the width of the clear zone by the length and height of the Roadside Catchment Appurtenance sections.

1.05.3 Materials and/or Procedures

Refer to Subsection 1.6 of this Schedule 1 ("Specifications").

Additional materials and/or procedures requirements are as follows:

- a) Ensure any accumulated rock, unconsolidated sediment or organic debris from the catchment area is removed to design grade level and to a minimum width of 2.0 metres;
- b) Ensure accumulated rock, unconsolidated sediment or organic debris is removed between the barrier and catchment area

1.05.4 Routine Maintenance Services Cap

\$10,000 – for each occurrence, the cost to remove accumulated rock, unconsolidated sediment or organic debris from the catchment area.

1.06 Salt Containment Infrastructure Maintenance

1.06.1 Outcome

To provide for the safe handling and storage of salt and Winter Abrasives on provincial land and monitor, maintain, repair and replace provincially owned Salt Containment Infrastructure.

1.06.2 Routine Maintenance Services

- PM1.06.2-1** Off-load salt onto an evapotranspiration liner or containment pad, if available and/or store immediately within the salt shed.
- PM1.06.2-2** Retrieve and return to the salt shed immediately, any salt spillage over the top of skirt that lines the inside of the salt shed.
- PM1.06.2-3** Remove immediately, any salt or salt contaminated material on the pit floor to a depth of 40 centimetres for use with Winter Abrasives when processing.
- PM1.06.2-4** Notify the Province immediately of any damage to the containment pond, including but not limited to the liner, berm or fencing.
- PM1.06.2-5** Temporarily repair damaged or deteriorated salt shed components immediately, that permits water infiltration.
- PM1.06.2-6** Permanently repair within 8 weeks, any temporarily repaired steel/fabric salt shed components that permits water infiltration.
- PM1.06.2-7** Permanently repair within 2 weeks, any temporarily repaired wooden salt shed components that permits water infiltration.
- PM1.06.2-8** Inspect and document the condition of Salt Containment Infrastructure as follows:

Performance Criteria	Response
a) Evapotranspiration water/brine levels	daily or more often when required
b) Water in the containment pond to prevent over-flowing	daily or more often when required
c) Steel/fabric salt sheds including, but not limited to, the steel structural components including base plates, wire cross-bracing, fabric roof, fabric lashing, winches and vents, lock-blocks and protective skirt	bi-annually in the spring and fall or in accordance with the manufacturer's specifications and recommendations, whichever is more frequent
d) Wooden salt shed including but not limited to structural condition and weatherproof exterior	annually
e) Salt shed apron and containment pad surfaces	annually
f) Evapotranspiration liner surface absorption	daily or more often when required

PM1.06.2-9 Maintain the superstructure of steel/fabric salt sheds as follows:

Performance Criteria	Response
a) Remove grime and encrusted salt off the salt shed's steel interior	annually
b) Lubricate winches	annually
c) Re-tension-web and fabric roof lashing	annually
d) Re-tighten fastening bolts	annually
e) Remove surface rust	annually

PM1.06.2-10 Repair or replace Salt Containment Infrastructure as follows:

Performance Criteria	Response
a) Damaged or deteriorated containment pond components, including but not limited to the liner, berm or fencing	immediately
b) Loss of absorption for a compact surface where water is ponding on the evapotranspiration liner	immediately
c) Saturation or overflow of evapotranspiration water/brine	when required
d) Damaged or deteriorated wooden salt shed components	within 2 weeks of the bi-annual inspection or as noted in PM1.06.2-8
e) Damaged or deteriorated steel/fabric salt shed components	within 8 weeks of the bi-annual inspection or as noted in PM 1.06.2-8 if salt and/or Winter Abrasive with salt is present or prior to when the salt and/or Winter Abrasive with salt is scheduled to be stored
f) Cracked, chipped edges, pot holes, settling/ponding, or base failure of surfaces	General Specifications 1.01, 1.06 and 1.10 of this Schedule 1 ("Specifications") for a Class 4 Highway

PM1.06.2-11 Replace annually, the top 10 centimetres of salt contaminated material on the evapotranspiration surface with free draining material and use the removed salt contaminated material for Winter Abrasives processing.**Notes:**

- 1) The Province inspection H-form is to be used for inspections of steel/fabric salt sheds;
- 2) PM1.06.2-10 (f) includes possible Quantified Maintenance Services, and
- 3) Salt shed locations are provided in Appendix A of Schedule 13 ("Gravel Licence").

1.06.3 Materials and/or Procedures

Refer to Subsection 1.6 of this Schedule 1 ("Specifications").

Additional materials and/or procedures requirements are as follows:

- a) Load salt and/or Winter Abrasive containing salt on a containment pad or the evapotranspiration liner surface;
- b) Store salt and/or Winter Abrasive containing salt at a height below the top 30 centimetres of the skirt within a steel/fabric salt shed and ensure the top of the lock block wall remains free of salt accumulation;
- c) Park heavy equipment used for loading salt or Winter Abrasive containing salt, on the containment pad, evapotranspiration liner or within the salt shed;
- d) Prevent spillage onto the pit floor when transporting salt;
- e) Store Winter Abrasive containing salt under cover or on a containment pad or on an evapotranspiration liner, if supplied;
- f) Use a spill proof apron for salt hoppers to contain salt and facilitate retrieval;
- g) Store salt contaminated material for future use with Winter Abrasives on a containment pad or evapotranspiration liner or in a salt shed;
- h) Prevent salt contaminated materials from being tracked from the containment pad or evapotranspiration liner and use a containment pond for disposal, if one exists on site;
- i) Maintain an open catchment area adjacent to the salt shed exterior walls to accommodate unobstructed snow shedding off the structure;
- j) Remove snow from the roof of steel/fabric salt shed and adjust the roof tension after the snow accumulation has been removed in accordance with the manufacturer's specifications and recommendations;
- k) Reseal exposed surfaces following the removal of surface rust with zinc-rich primer/paint;
- l) Maintain and repair damaged or deteriorated salt shed components in accordance with the manufacturer's specifications and recommendations;
- m) Use engineered designs for all repairs, modifications or replacement to steel/fabric salt shed structural components including, but not limited to the fabric roof, prepared by a Professional Engineer, retained by the Contractor; and
- n) Securely lock gates and post signage to prevent unauthorized access to fenced containment ponds.

1.06.4 Routine Maintenance Services Cap

\$50,000 – for each occurrence, the cost to repair or replace a salt shed.

1.07 Vehicle Inspection Station Maintenance

1.07.1 Outcome

To facilitate the safe and efficient operation of Vehicle Inspection Stations.

1.07.2 Routine Maintenance Services

PM1.07.2-1 Provide Services at the Vehicle Inspection Station areas in accordance with the response identified in the Vehicle Inspection Station plan in Appendix A.

Specific Requirements:

- a) Remove Winter Accumulations from all Travelled Lanes and vehicle accessible portions of the Vehicle Inspection Station in accordance with PM3.01.2-1 (a) of the General Specifications of this Schedule 1 "Specifications").

Notes:

- 1) The Contractor is not responsible for the buildings or for the management and maintenance of the weigh scale, electrical components and the water and septic systems.

1.07.3 Quantified Maintenance Services

PM1.07.3-1 Provide Services at the Vehicle Inspection Station areas in accordance with the response identified in the Inspection Station plan in Appendix A.

Notes:

- 1) The Contractor is not responsible for the buildings or for the management and maintenance of the weigh scale, electrical components and the water and septic systems.

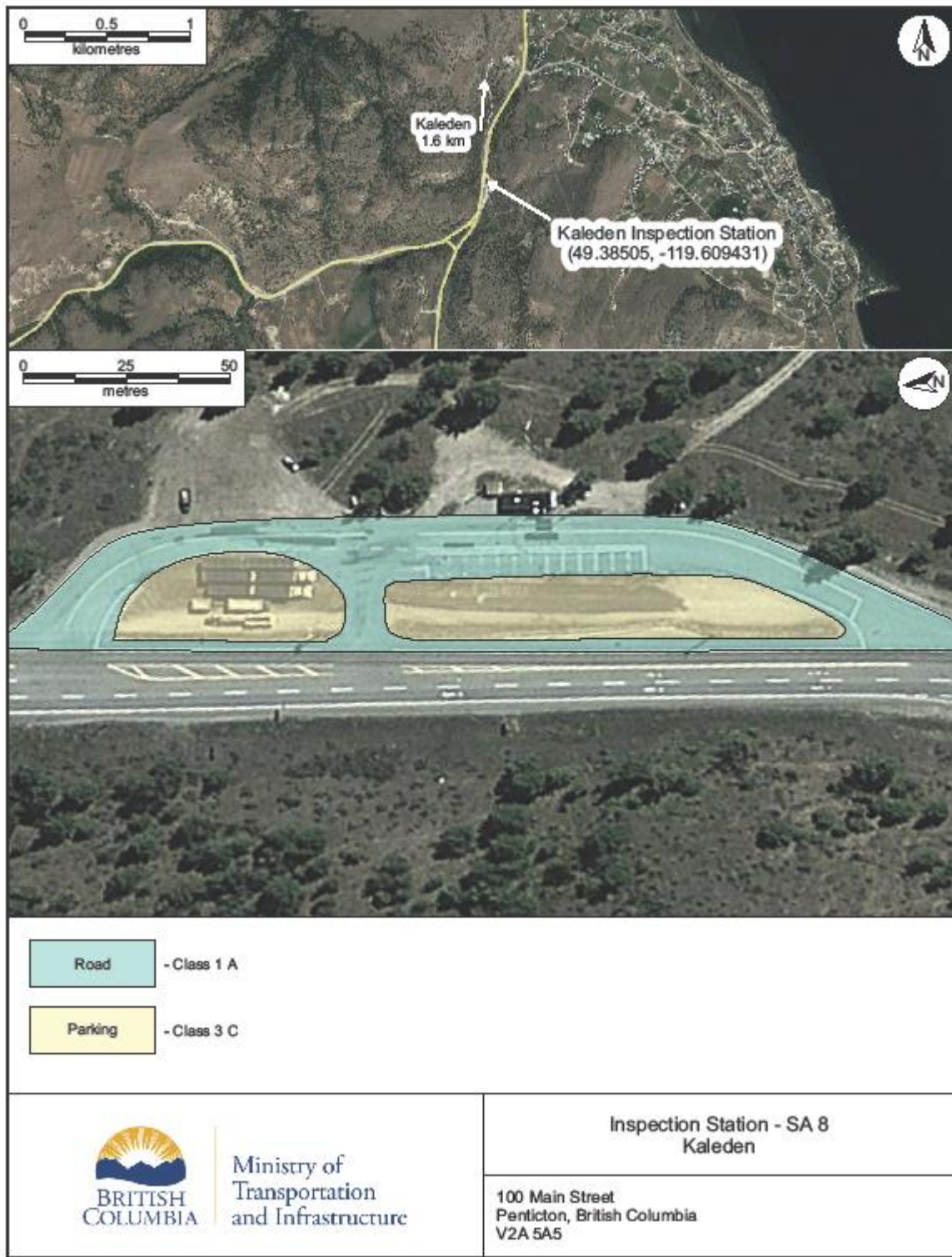
1.07.4 Materials and/or Procedures

Refer to Subsection 1.6 of this Schedule 1 ("Specifications").

1.07.5 Warranty

Refer to Section 3 of this Schedule 1 ("Specifications").

Appendix A Vehicle Inspection Station Plan



1.08 Multi-Lane Snow Removal – Okanagan Connector

1.14.1 Outcome

To provide enhanced highway snow removal exceeding the performance measures in General Specifications 3.01 of this Schedule 1 (“Specifications”) related to the response to Winter Accumulations and Compact on the Okanagan Connector.

1.14.2 Routine Maintenance Services

PM1.14.2-1 Remove Winter Accumulations that exceeds 4 centimetres in height from all Travelled Lanes.

Notes:

- 1) The sections of Highway for enhanced snow removal in Service Area 8 are shown in Appendix A.

1.14.3 Materials and/or Procedures

- a) Refer to Subsection 1.6 of this Schedule 1 (“Specifications”).

Appendix A

