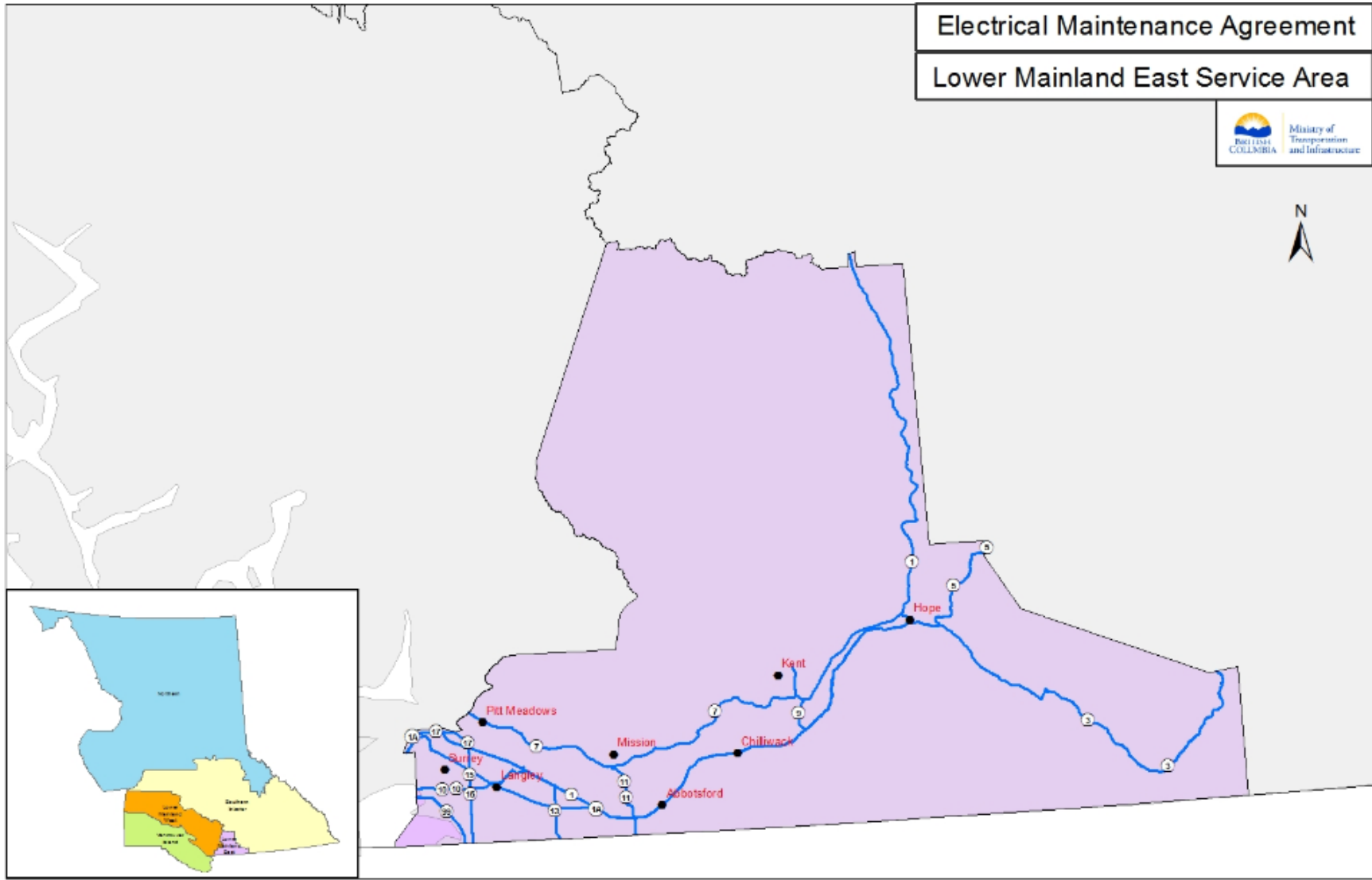
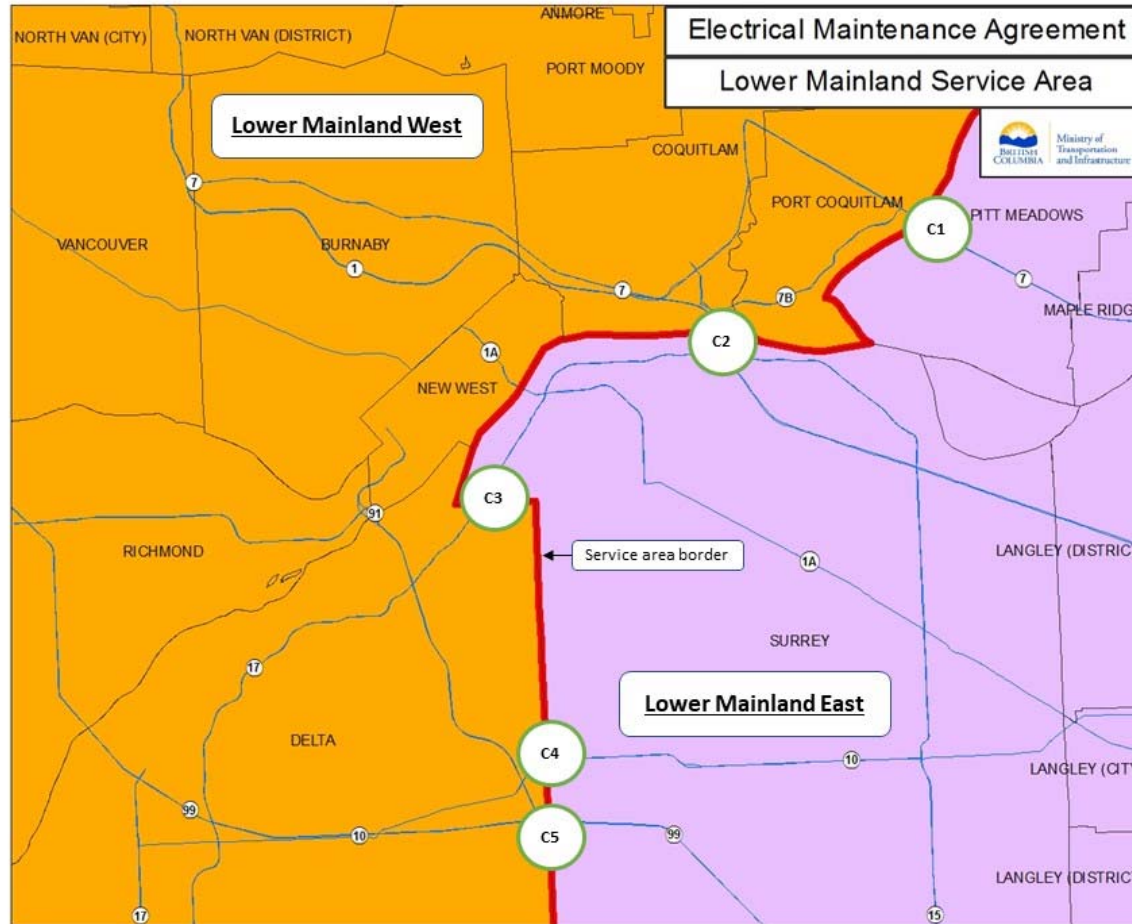


# SCHEDULE 3 – ELECTRICAL SERVICE AREA

(MAP REFERENCE)



## APPENDIX 1 (TO SCHEDULE 3)



Crossing Number	Crossing Description
C1	Pitt River Bridge Hwy 7 Transition
C2	Port Mann Bridge Hwy 1 Transition
C3	Hwy 17 Crossing and 120th St Transition
C4	Hwy 10 and 120th St Transition
C5	Hwy 99 and Hwy 91 Transition





**Lower Mainland Service Area**

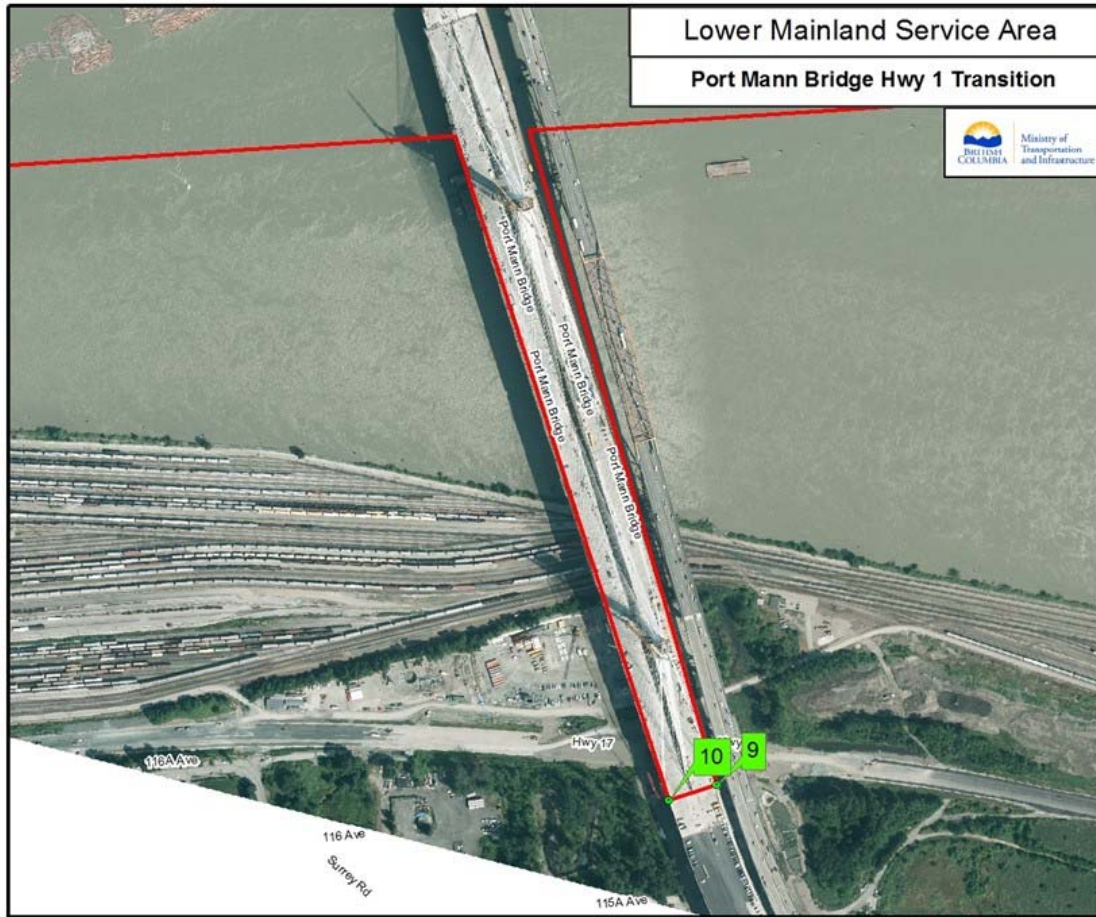
**Pitt River Bridge Hwy 7 Transition**

No.	Longitude	Latitude
1	122° 43' 44.81" W	49° 14' 54.28" N
2	122° 43' 48.16" W	49° 14' 51.89" N
3	122° 43' 1.60" W	49° 14' 30.07" N
4	122° 43' 0.83" W	49° 14' 30.90" N
5	122° 43' 8.06" W	49° 14' 36.32" N
6	122° 43' 8.77" W	49° 14' 36.71" N
7	122° 43' 14.72" W	49° 14' 33.84" N
8	122° 43' 14.49" W	49° 14' 34.15" N

 Electrical Boundary







No.	Longitude	Latitude
9	122° 48' 37.02" W	49° 12' 50.14" N
10	122° 48' 39.58" W	49° 12' 49.67" N

 Electrical Boundary



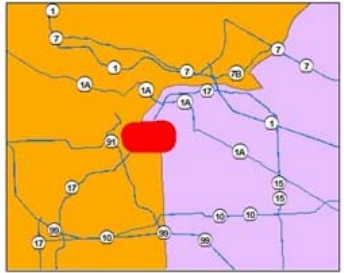


**Lower Mainland Service Area**  
**Hwy 17 Crossing and 120th St Transition**



No.	Longitude	Latitude
11	122° 54' 47.99" W	49° 10' 37.64" N
12	122° 54' 49.00" W	49° 10' 37.65" N

 Electrical Boundary







**Lower Mainland Service Area**

**Hwy 10 and 120th St Transition**



No.	Longitude	Latitude
13	122° 53' 18.57" W	49° 6' 30.08" N
14	122° 53' 18.55" W	49° 6' 29.31" N

 Electrical Boundary





No.	Longitude	Latitude
15	122° 53' 19.11" W	49° 5' 31.33" N
16	122° 53' 19.22" W	49° 5' 30.38" N

Electrical Boundary

