

## Technical Circular T-03/10

Date: March 12, 2010

**To:** All HQ Directors: Operations, Planning and Major Projects  
All Regional Directors  
All Regional Managers, Engineering  
All Regional Traffic Engineers  
All District Managers Transportation  
All Project Managers  
Manager, Provincial Sign Program  
All MoT Highway Maintenance Contractors

**Subject:** I-082-2 and W-061R Passing Lane/Climbing Lane Signing

### **Purpose:**

This technical circular updates the B.C. Ministry of Transportation & Infrastructure (MoT) Passing Lane/Climbing Lane information/warning signing. The circular also introduces a new sign tab (I-082-xT) to be used with the I-082-2 array of signs.

### **Background:**

The sign update is to provide enhanced information for road users by adding 1) the I-082-xT tab sign on the approach to Passing Lane/Climbing Lanes that indicates to road users the actual length available for which passing can take place, 2) adding graphical information to the current text based sign used 2 km prior to Passing Lane/Climbing Lanes, and 3) an optional W-061R sign (specified for use by the Regional Traffic Engineer) to be placed on the left shoulder where Passing Lanes/Climbing Lanes end.

### **Policy:**

The updated Passing Lane /Climbing Lane signs should use the following guidelines for placement in the field:



I-082-1



I-082-2



I-082-xT

- The I-082-2 sign should be used in combination with, and placed above the I-082-1 “Passing Lane 2 km Ahead” sign. Placement should be approximately 2 km in advance of the beginning of the passing lane to inform road users there is a passing opportunity ahead.
- The I-082-xT “For X km” sign tab should be placed in combination with, and placed below the I-082-2 sign. Placement should be approximately 150 m in advance of the passing lane with the distance shown on the tab being the actual length of passing/climbing lane rounded down to the nearest 10<sup>th</sup> of a kilometre. In cases where the passing lane length available is less than a kilometre, the I-082xT tab may use distances marked in metres (i.e. “For XXX m”). The sign using metres should display distances from 400 metres to 950 metres, rounded down to the nearest 50 metre increment. Measured lengths should represent full lane widths, this distance typically measured from the start of the white dash/skip lane line to end of the white dash/skip lane line.
- The Regional Traffic Engineer may add an optional W-061R “Right Lane Ends Sign” to the left shoulder where passing/climbing lanes merge to a single lane. The optional sign, if used, is to be located approximately adjacent to the standard right shoulder W-061R sign, or where specified by the RTE. The additional left sign is typically used at locations where a vertical or horizontal curve impacts the visibility of the merge area’s end point.
- Figure 7.37 from the Manual of Standard Traffic Signs & Pavement Markings on typical pavement markings for passing/climbing lanes has been revised to reflect the new signing for passing/climbing lanes (See attached).

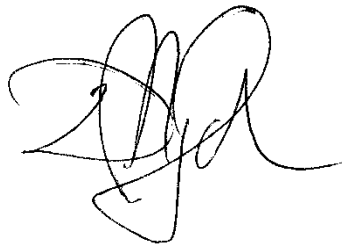
**Implementation:**

These revised sign guidelines are to be implemented on all new projects which involve passing/climbing lanes.

On existing Passing Lane/Climbing Lanes, signs will be updated either through sign attrition, or as determined by district staff in consultation with the Regional Traffic Engineer (RTE).

**Contact:**

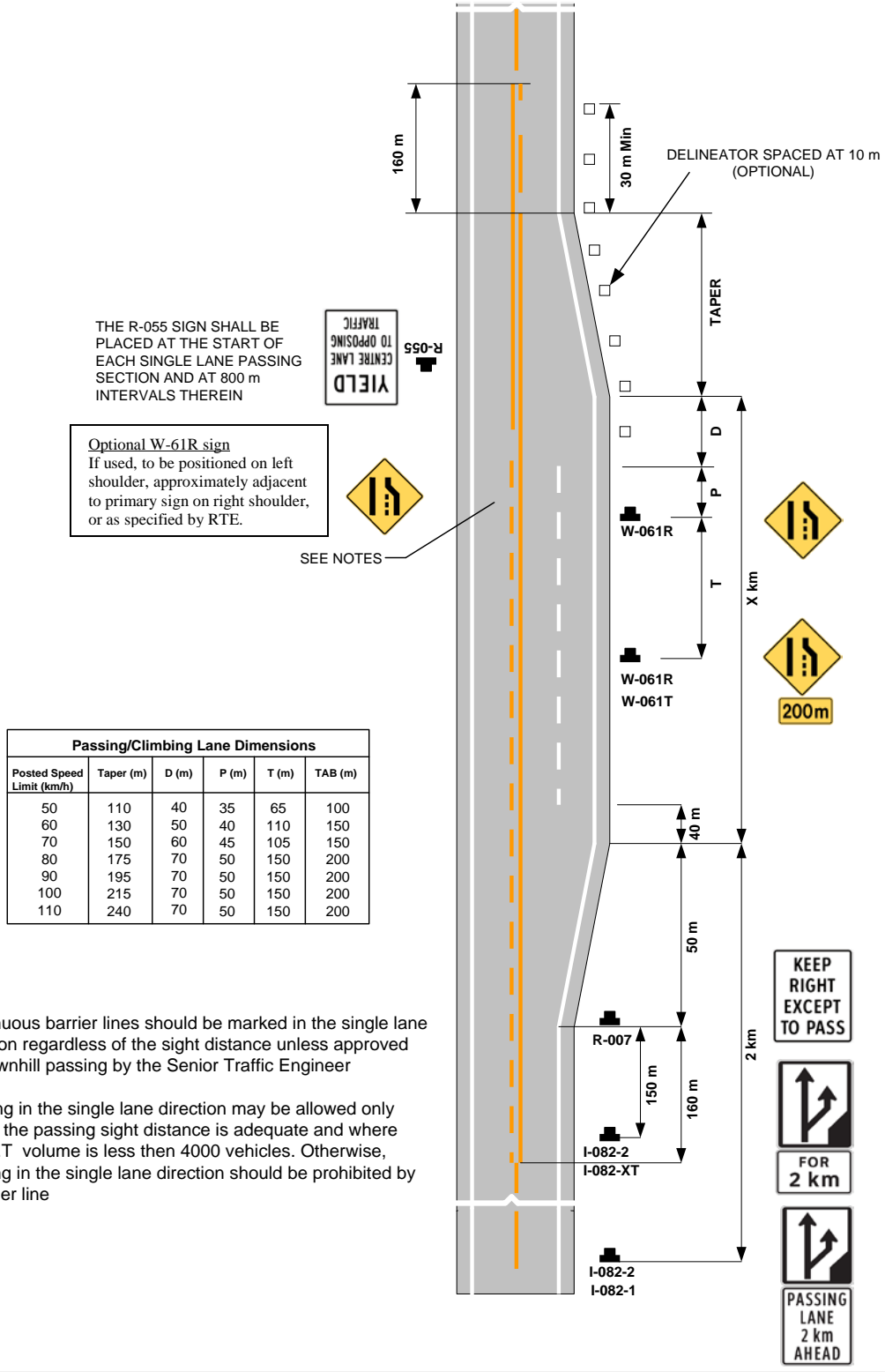
Jerry Froese, P.Eng., PTOE  
Senior Traffic Engineer  
Engineering Branch  
Tel: (250) 387-7583  
[Jerry.froese@gov.bc.ca](mailto:Jerry.froese@gov.bc.ca)



---

Dirk Nyland, P. Eng.  
Chief Engineer

### Figure 7.37 Passing / Climbing Lane Markings & Sign Placement



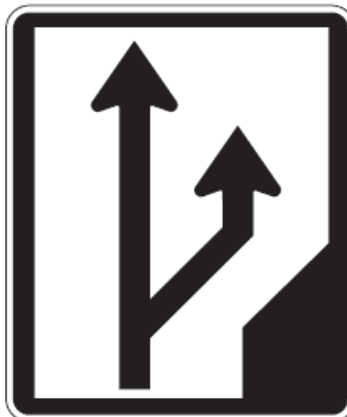
**NOTES:**

- Continuous barrier lines should be marked in the single lane direction regardless of the sight distance unless approved for downhill passing by the Senior Traffic Engineer
- Passing in the single lane direction may be allowed only where the passing sight distance is adequate and where S.A.D.T volume is less than 4000 vehicles. Otherwise, passing in the single lane direction should be prohibited by a barrier line

# I-082 Revisions

H8 1048  
Dec, 17, 2008

I-082-2  
750 x 900



I-082-2  
Changed from 900 x 900  
to 750 x 900.  
Graphic remained  
the same size  
Now ASTM 9  
(was ASTM 1)



I-082-1  
750 x 900

I-082-1  
Formerly I-082-1x  
The smaller sign, I-082-1  
removed from catalogue  
Now ASTM 9  
(was ASTM 1)  
Font changed to clearview

Any reference to “freeway standard” will be removed from catalogue for this sign series, as there is no freeway application for “passing lane”

I-082-2  
750 x 900



I-082-2T  
750 x 450

I-082-2T  
Messaging changed from  
what currently resides in  
catalogue.  
Now ASTM 9  
(was ASTM 1)  
Font changed to clearview