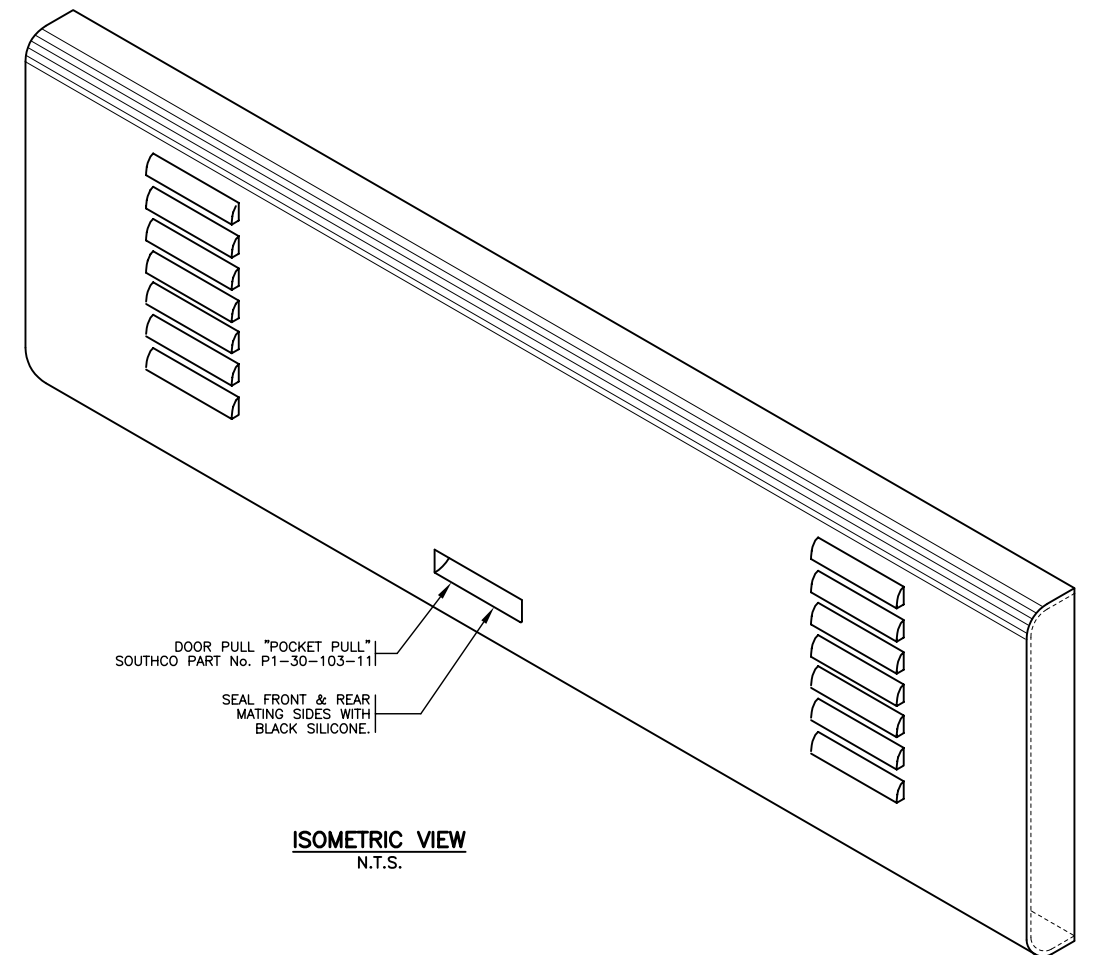
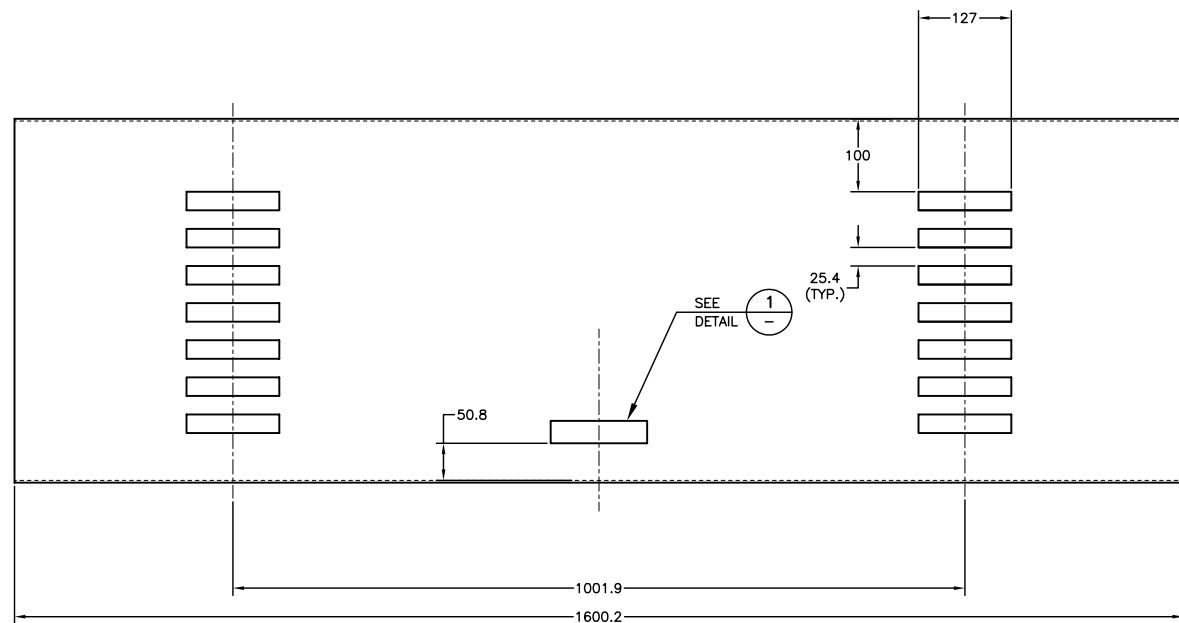


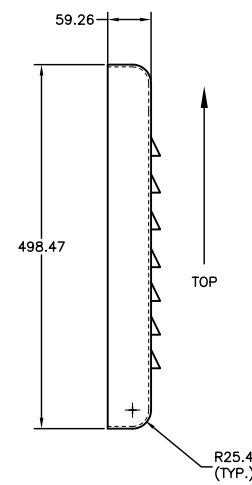
DETAIL 1 CUT OUT FOR DOOR PULL



ISOMETRIC VIEW
N.T.S.



BACK VIEW



END VIEW

MATERIAL: 1/8" 5052-H32 AL. SHEET
FINISH: DE-BURR ALL ROUGH EDGES,
POWDER COAT SEMI-GLOSS BLACK
TOLERANCES: GENERAL - ±1.6mm (1/16 ins)

ALL DIMENSIONS ARE IN MILLIMETERS
UNLESS NOTED OTHERWISE



No.	Description	Date
J		
I		
H		
G		
F		
E		
D		
C		
B		
A	GENERAL REVISIONS	JUN03

SIX CHARACTER CHANGEABLE MESSAGE SIGN

REAR DOOR DETAILS



Ministry of
Transportation
and Highways

Drawing No.
MS730.5

A