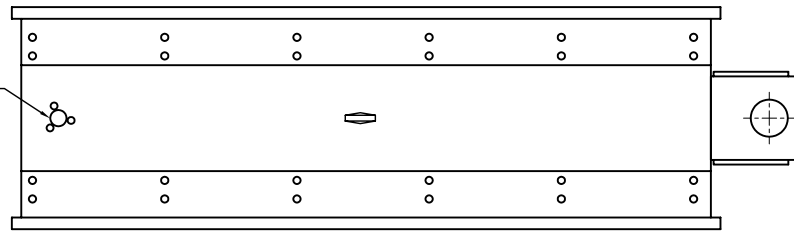
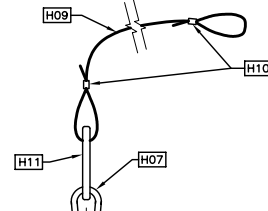


HOLES TO SUIT MINISTRY STANDARD
SPRING CUSHION END HANGER -
REFER TO CHAPTER 604 -
SIGNAL MOUNTING HARDWARE

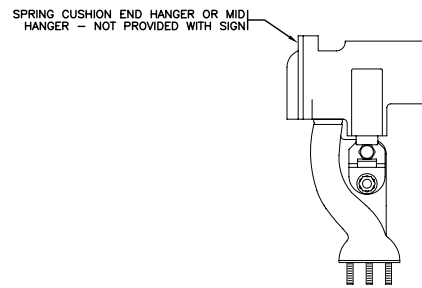


SIGNAL HEADS NOT SHOWN FOR CLARITY

TOP VIEW

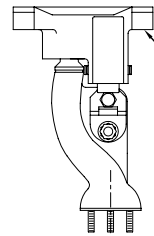


REMOVABLE SP-005L LEXAN SIGN
FACE AND FRAME (USE SP-005R
ON OPPOSITE SIDE)



SPRING CUSHION MID HANGER
- NOT PROVIDE WITH SIGN

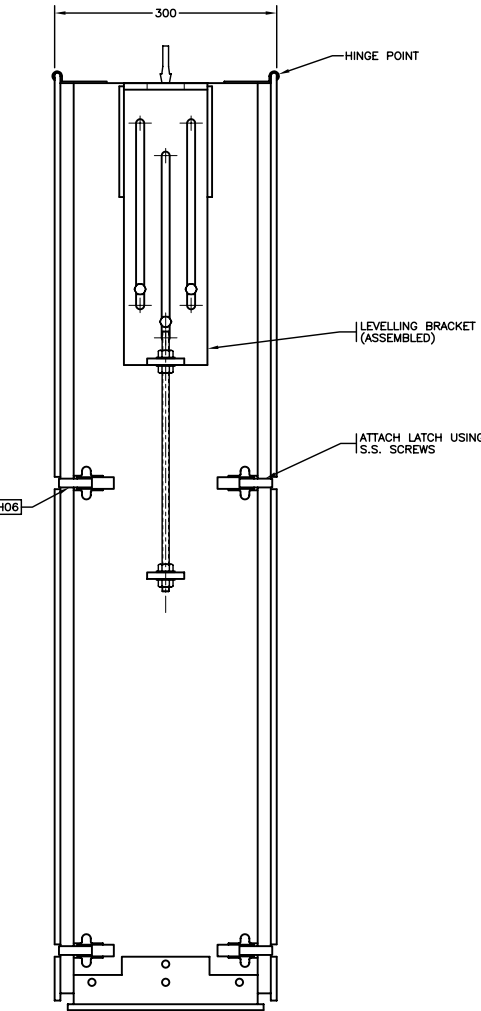
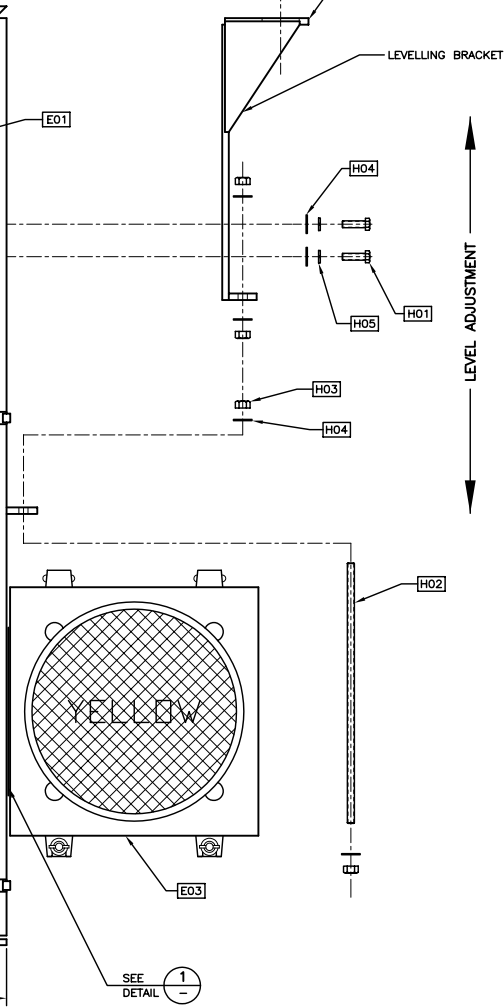
CONTRACTOR SHALL PROVIDE
SHOP DRAWINGS FOR LEVELLING BRACKET
PRIOR TO INSTALLATION



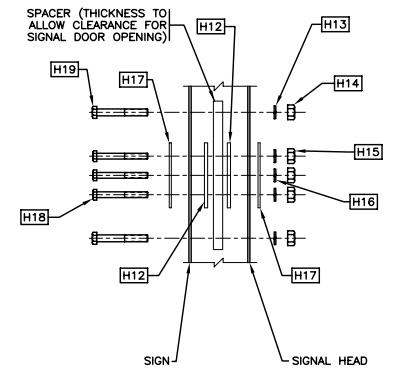
A



FRONT VIEW



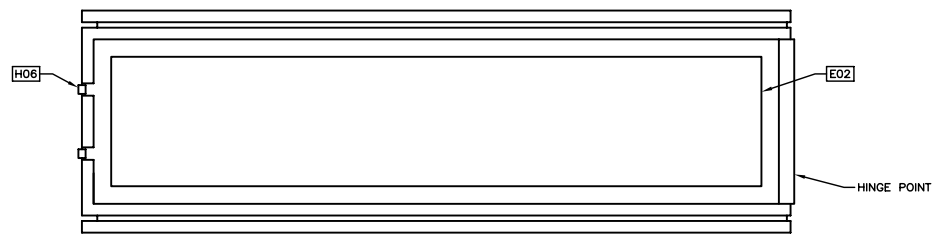
SIGNAL HEADS NOT SHOWN FOR CLARITY
SIDE VIEW



DETAIL 1
N.T.S.

NOTES:
1. LENS FRAMES ARE ALL GASKETED.
2. TOP CORNERS AND MOUNTING LOCATIONS
ARE REINFORCED WITH ANGLES AND FLATBAR.

ALL DIMENSIONS ARE IN MILLIMETERS
UNLESS NOTED OTHERWISE



SIGNAL HEADS NOT SHOWN FOR CLARITY

BOTTOM VIEW

MAIN ASSEMBLY
MATERIAL: 10 ga. ALUMINUM
FINISH: GREEN POWDER COAT



EQUIPMENT LIST				
REFERENCE	QTY	DESCRIPTION	MANUFACTURER	PART NUMBER
E01	2	6mm LEXAN SIGN FACE & FRAME	N/A	N/A
E02	1	6mm LEXAN LENSE & FRAME (DOWN LIGHTER)	N/A	N/A
E03 (OPTIONAL)	2	300mm TRAFFIC SIGNAL HEAD (YELLOW LED)	REFER TO SPECIFICATIONS	REFER TO SPECIFICATIONS

HARDWARE LIST				
REFERENCE	QTY	DESCRIPTION	MANUFACTURER	PART NUMBER
H01	3	3/8" x 1-1/4" N.C. S.S. HEX BOLT	N/A	N/A
H02	1	3/8" x 14" N.C. S.S. THREADED ROD	N/A	N/A
H03	4	3/8" N.C. S.S. HEX NUT	N/A	N/A
H04	4	3/8" S.S. FLAT WASHER	N/A	N/A
H05	3	3/8" S.S. HEAVY DUTY LOCK WASHER	N/A	N/A
H06	10	DOOR LATCH	SOUTHCO	V2-0034-52
H07	1	5/16" S.S. DROP-FORGED EYE NUT	SPA-E-NAUR	024-851
H08	AS REQ.	GASKET 1/4" x 3/4"	FAUCHER	623-2079
H09	1	40" x 3/16" S.S. SAFETY CABLE	LEWMAR	7x19x316
H10	2	PLAIN COPPER OVAL SLEEVE	NICO316	N/A
H11	1	3/8" S.S. SNAP HOOK	PAYNE'S	2450SS-10
H12	4	RUBBER GASKET	REFER TO SPECIFICATIONS	REFER TO SPECIFICATIONS
H13	4	3/8" LOCK WASHER	N/A	N/A
H14	4	3/8" NYLOCK NUT	N/A	N/A
H15	6	5/16" NYLOCK NUT	N/A	N/A
H16	6	5/16" LOCK WASHER	N/A	N/A
H17	4	S.S. WASHER	REFER TO SPECIFICATIONS	REFER TO SPECIFICATIONS
H18	6	5/16" x 2-3/4" N.C. S.S. HEX BOLT	N/A	N/A
H19	4	3/8" x 2-3/4" N.C. S.S. HEX BOLT	N/A	N/A

No.	Description	Date
J		
I		
H		
G		
F		
E		
D		
C		
B		
A	NOTE ADDED	MAY03

INTERNALLY ILLUMINATED CROSSWALK SIGN

MAIN ASSEMBLY



Drawing No.
MS720.1

A

FILE: PLANT/PROJECTS/0303_0303_MATERIAL STANDARDS/WORKS/DRAWINGS/DESIGN DRAWINGS/CHAPTER720-ILLUMINATED_CROSSWALK_SIGN/MS72001.DWG, DATE: 4/16/03, 12:35 p.m. BY: mshar