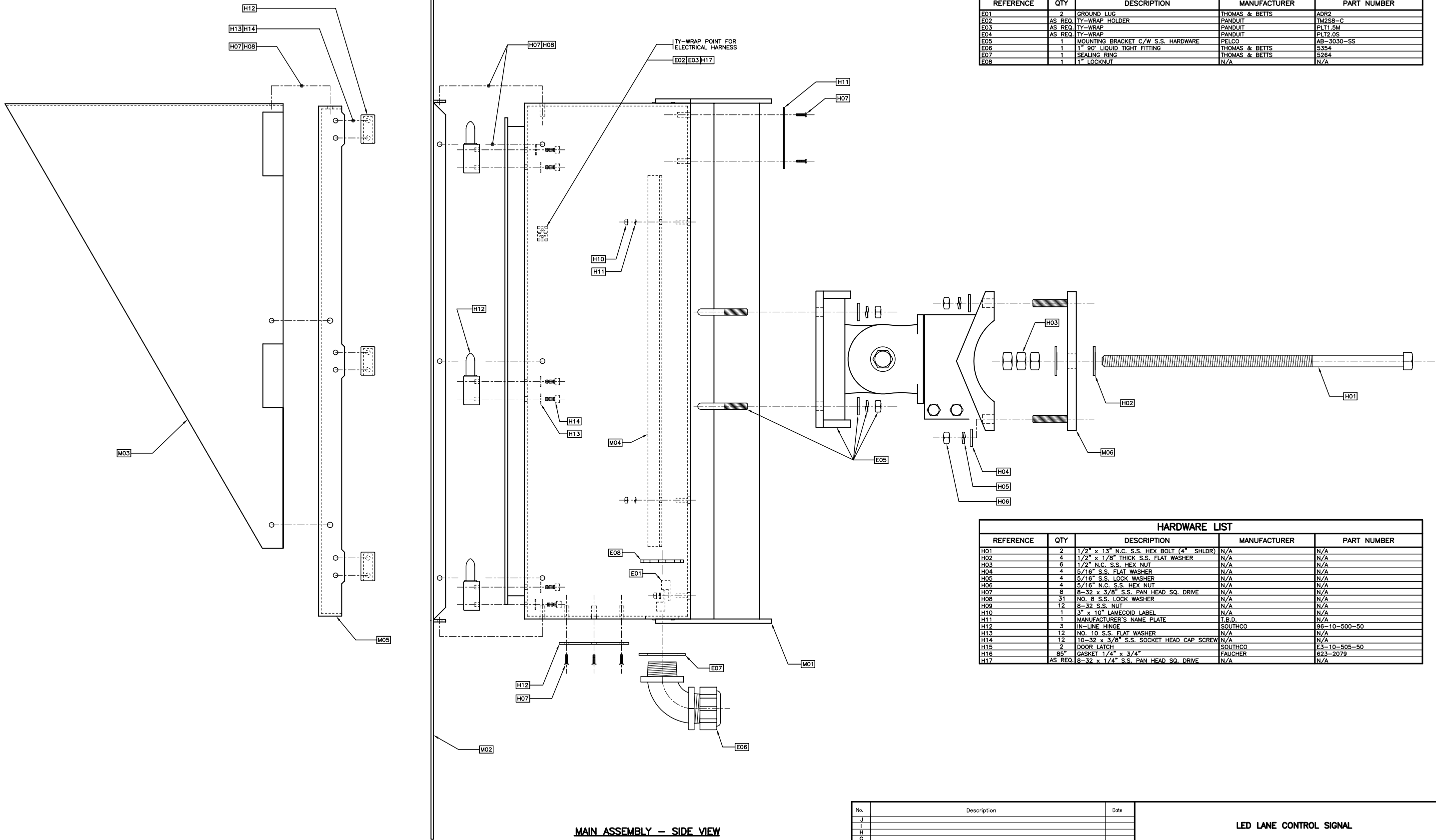


| MANUFACTURED PART LIST | | | |
|------------------------|-----|----------------------|-------------------|
| REFERENCE | QTY | DESCRIPTION | DRAWING REFERENCE |
| M01 | 1 | ENCLOSURE | MS700.2 |
| M02 | 1 | BACKBOARD | MS700.3 |
| M03 | 1 | VISOR | MS700.4 |
| M04 | 1 | ELECTRICAL PANEL | MS700.5 |
| M05 | 1 | DOOR (3 COLOUR) | MS700.6 |
| M06 | 1 | SHAFT MOUNTING PLATE | MS700.8 |

SEE SPECIFICATIONS FOR LED REQUIREMENTS

| EQUIPMENT LIST | | | | |
|----------------|---------|------------------------------------|----------------|-------------|
| REFERENCE | QTY | DESCRIPTION | MANUFACTURER | PART NUMBER |
| E01 | 2 | GROUND LUG | THOMAS & BETTS | ADR2 |
| E02 | AS REQ. | TY-WRAP HOLDER | PANDUIT | TM2SB-C |
| E03 | AS REQ. | TY-WRAP | PANDUIT | PLT1.5M |
| E04 | AS REQ. | TY-WRAP | PANDUIT | PLT2.0S |
| E05 | 1 | MOUNTING BRACKET C/W S.S. HARDWARE | PELCO | AB-3030-SS |
| E06 | 1 | 1" 90° LIQUID TIGHT FITTING | THOMAS & BETTS | 5354 |
| E07 | 1 | SEALING RING | THOMAS & BETTS | 5264 |
| E08 | 1 | 1" LOCKNUT | N/A | N/A |



| HARDWARE LIST | | | | |
|---------------|---------|------------------------------------------|--------------|--------------|
| REFERENCE | QTY | DESCRIPTION | MANUFACTURER | PART NUMBER |
| H01 | 2 | 1/2" x 13" N.C. S.S. HEX BOLT (4" SHLDR) | N/A | N/A |
| H02 | 4 | 1/2" x 1/8" THICK S.S. FLAT WASHER | N/A | N/A |
| H03 | 6 | 1/2" N.C. S.S. HEX NUT | N/A | N/A |
| H04 | 4 | 5/16" S.S. FLAT WASHER | N/A | N/A |
| H05 | 4 | 5/16" S.S. LOCK WASHER | N/A | N/A |
| H06 | 4 | 5/16" N.C. S.S. HEX NUT | N/A | N/A |
| H07 | 8 | 8-32 x 3/8" S.S. PAN HEAD SQ. DRIVE | N/A | N/A |
| H08 | 31 | NO. 8 S.S. LOCK WASHER | N/A | N/A |
| H09 | 12 | 8-32 S.S. NUT | N/A | N/A |
| H10 | 1 | 3" x 10" LAMECOID LABEL | N/A | N/A |
| H11 | 1 | MANUFACTURER'S NAME PLATE | T.B.D. | N/A |
| H12 | 3 | IN-LINE HINGE | SOUTHCO | 96-10-500-50 |
| H13 | 12 | NO. 10 S.S. FLAT WASHER | N/A | N/A |
| H14 | 12 | 10-32 x 3/8" S.S. SOCKET HEAD CAP SCREW | N/A | N/A |
| H15 | 2 | DOOR LATCH | SOUTHCO | E3-10-505-50 |
| H16 | 85* | GASKET 1/4" x 3/4" | FAUGHER | 623-2079 |
| H17 | AS REQ. | 8-32 x 1/4" S.S. PAN HEAD SQ. DRIVE | N/A | N/A |

MAIN ASSEMBLY - SIDE VIEW



| No. | Description | Date |
|-----|----------------|-------|
| J | | |
| I | | |
| H | | |
| G | | |
| F | | |
| E | | |
| D | | |
| C | | |
| B | | |
| A | CONVERT TO LED | MAY03 |

LED LANE CONTROL SIGNAL

MAIN ASSEMBLY



BRITISH COLUMBIA

Ministry of Transportation and Highways

Drawing No.

MS700.1

A