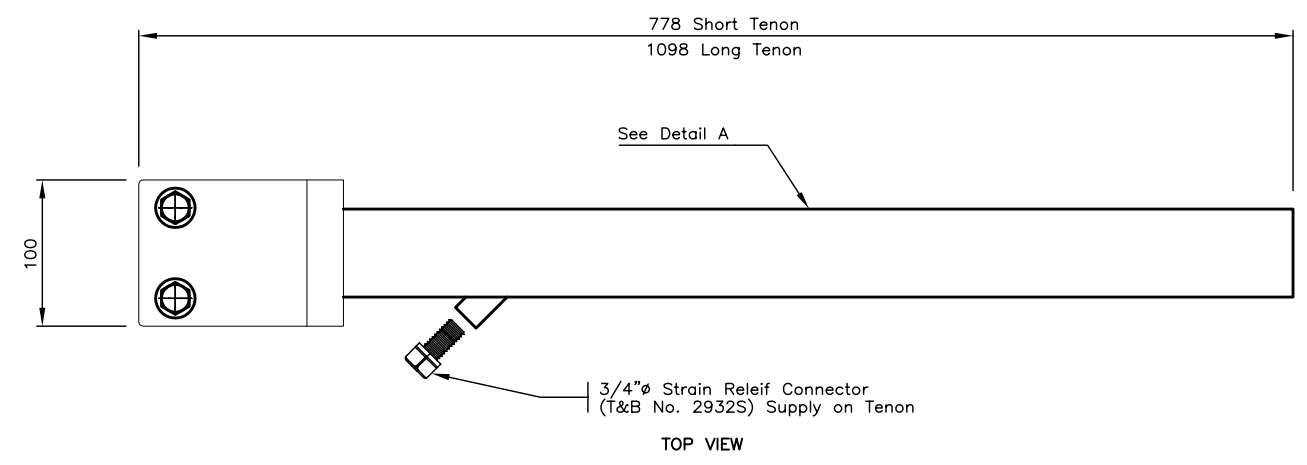
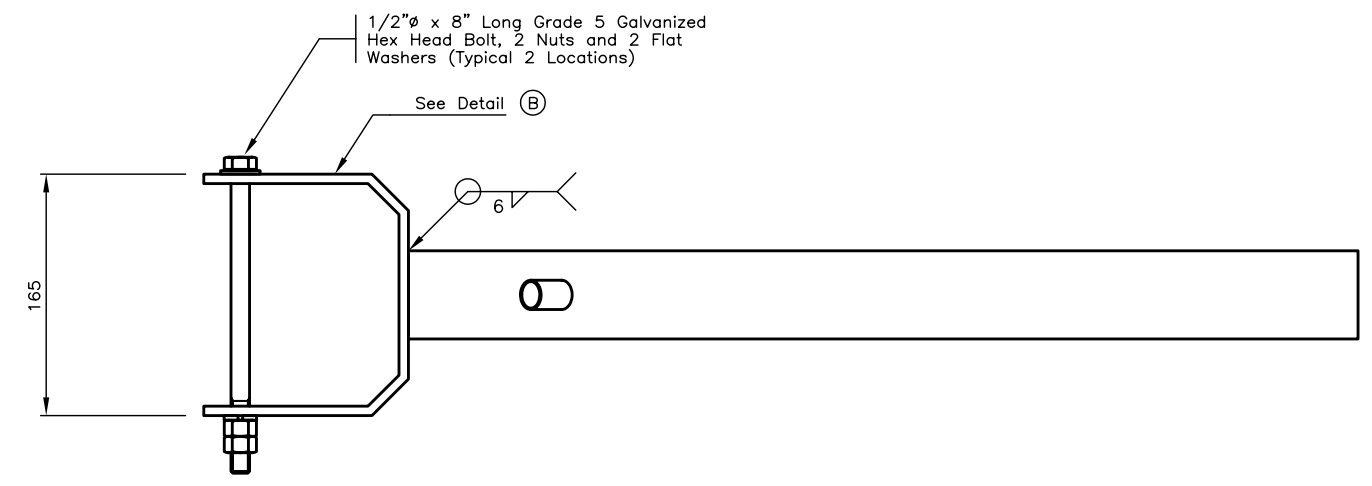


DETAIL (A)

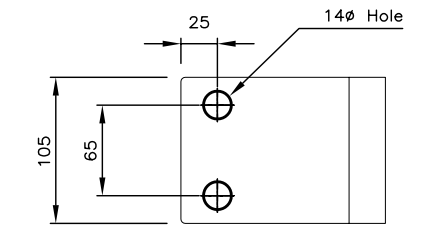


TOP VIEW

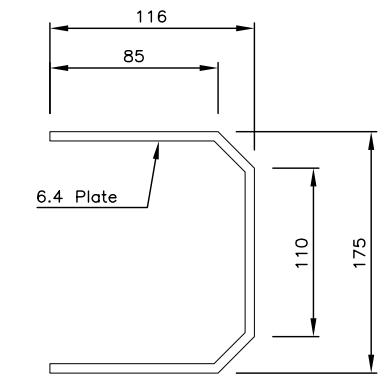


SECTION (4)

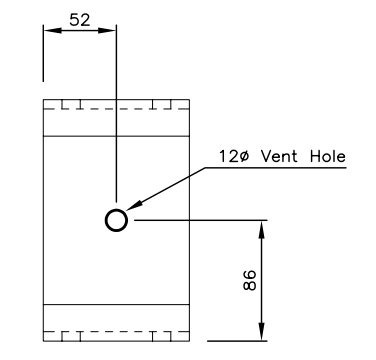
LUMINAIRE MOUNTING TENON



TOP VIEW

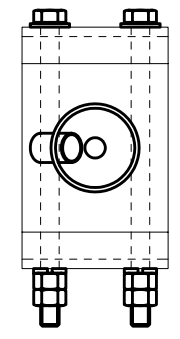


SIDE VIEW



END VIEW

DETAIL (B)




END VIEW

Notes:

- 1) Refer to Ministry Material Standard Chapter MS309 For Ring Specifications.
- 2) Tenons, Rings And Brackets Shall Be Galvanized.
- 3) Ring shall be supplied with Luminaire Mounting Brackets installed.
- 4) All Dimensions Are In Millimetres Unless Otherwise Noted.

NOT TO SCALE

No.	Description	Date
J		
I		
H		
G		
F		
E		
D		
C		
B		
A		

<b>HIGHMAST LUMINAIRE RING &amp; TENON</b>	
<b>DETAILS</b>	
 <b>BRITISH COLUMBIA</b> Ministry of Transportation and Highways	Drawing No. <b>MS371.6</b>