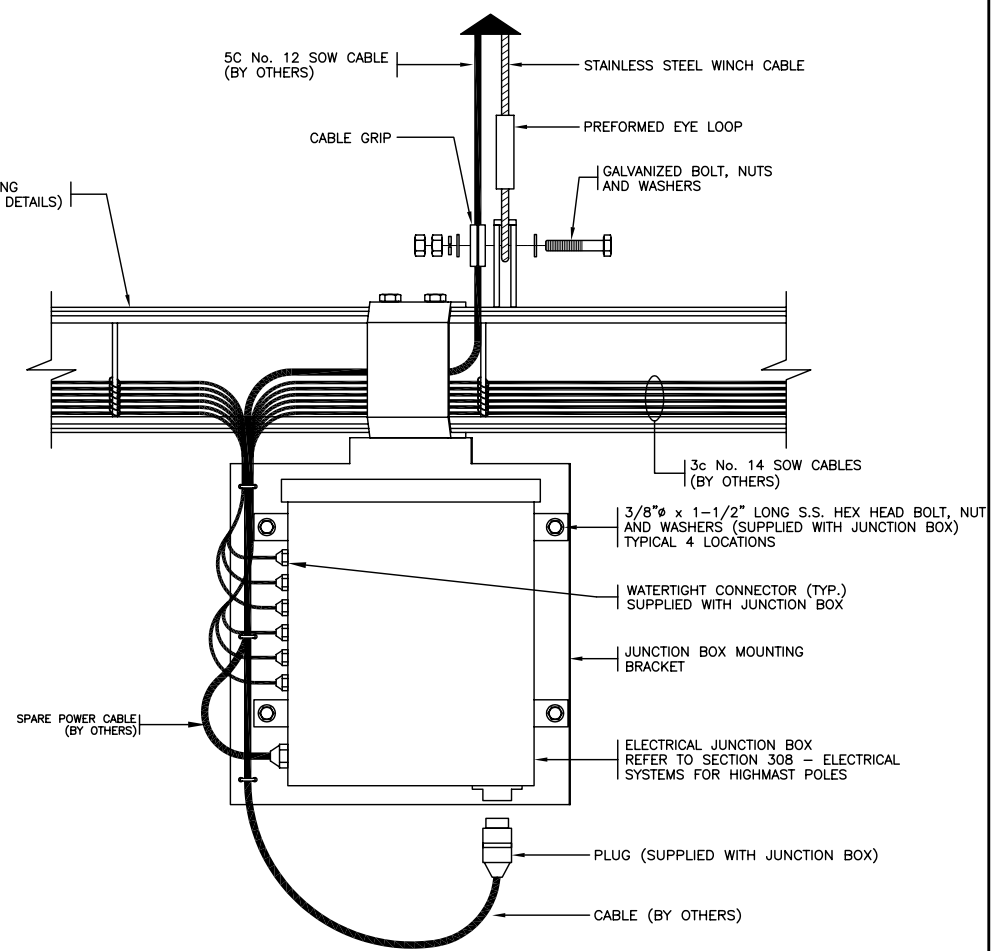


HEAD END AND LUMINAIRE RING



JUNCTION BOX MOUNTING BRACKET AND CABLE ATTACHMENT DETAILS

- Notes:
- 1) Refer to Ministry Material Standard For Head End & Ring Specifications Chapters MS309.
 - 2) All Connectors, Nuts, Bolts And Washers To Be Attached To Their Parent Member.
 - 3) All Dimensions Are In Millimetres Unless Otherwise Noted.

NOT TO SCALE

No.	Description	Date
J		
I		
H		
G		
F		
E		
D		
C		
B		
A		
REVISION		

HIGHMAST HEAD END & LUMINAIRE RING ASSEMBLY

DETAILS



BRITISH COLUMBIA
Ministry of Transportation and Highways

Drawing No. **MS370.1**