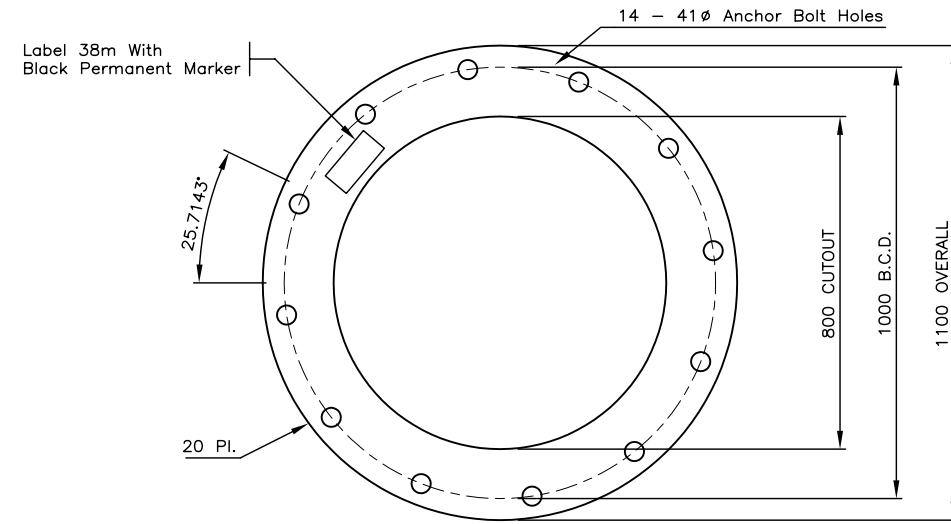
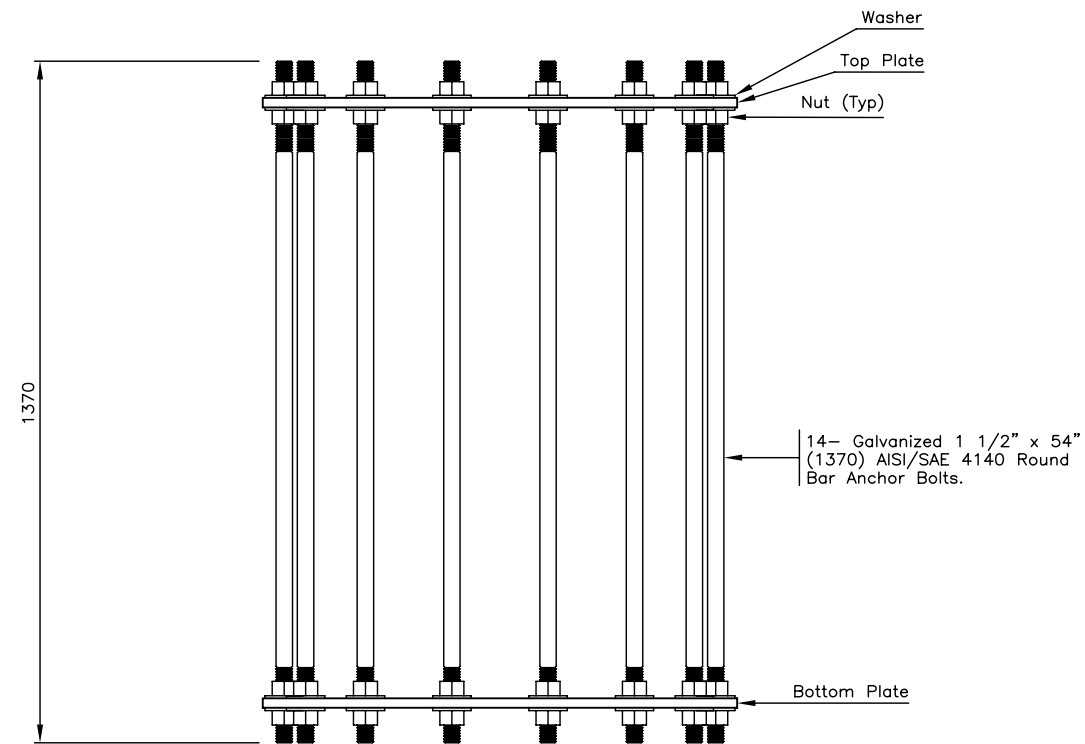


Notes:

- 1) Refer to Ministry Material Standard Chapter MS307 For Pole Specifications.
- 2) Bolt Cages Shall Be Supplied Unassembled With Nuts And Washers Installed On Bolts.
- 3) All Dimensions Are In Millimetres Unless Otherwise Noted.




**ANCHOR BOLT CAGE  
TOP AND BOTTOM PLATE**



**ANCHOR BOLT CAGE DETAIL**

NOT TO SCALE

No.	Description	Date
J		
I		
H		
G		
F		
E		
D		
C		
B		
A		

<b>ANCHOR BOLT CAGE FOR TYPE L &amp; TYPE H 38m HIGHMAST POLES</b>	
<b>DETAILS</b>	
 <b>BRITISH COLUMBIA</b> Ministry of Transportation and Highways	Drawing No. <b>MS364.2</b>