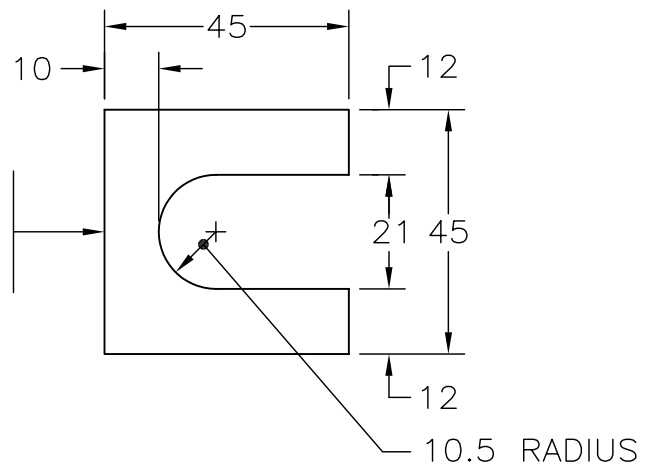
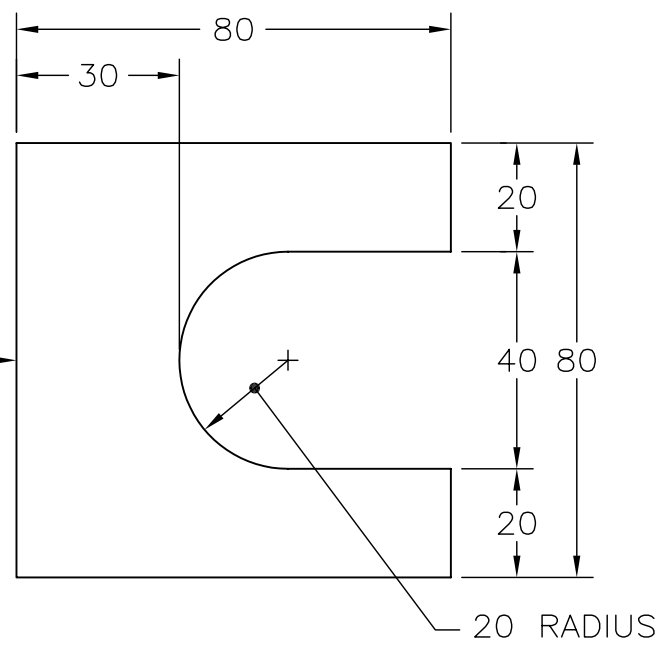


BRASS SHIMS SHALL BE FABRICATED FROM 0.85± THICK BRASS STOCK CONFORMING TO ASTM-B36.



BRASS SHIM DETAIL

LEVELING SHIMS SHALL BE FABRICATED FROM 1.6mm THICK GALVANIZED SHEET METAL STOCK



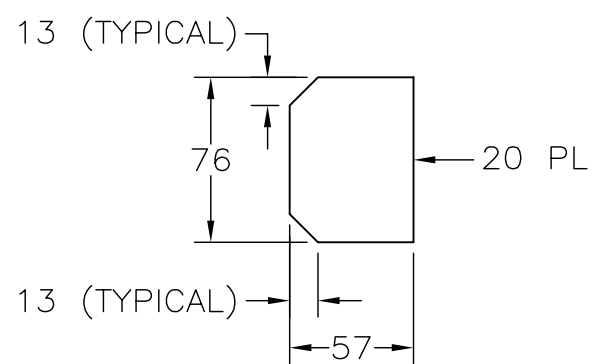
LEVELING SHIM DETAIL

STUB POST KIT (SN2165)		
ITEM	QUANTITY	DESCRIPTION
A	1	STUB POST (GALVANIZED)
B	4	1 1/4"Ø GALVANIZED ASTM A325 NUT AND WASHER.
C	4	3/4"Ø x 3 1/2" LONG GALVANIZED ASTM A325 BOLT, NUT AND 2 FLATWASHERS.
D	4	BRASS SHIMS
E	4	STEEL LEVELING SHIMS


NOTES

- SEE MATERIAL STANDARD SPECIFICATIONS SECTION 302 – BREAKAWAY SIGN STRUCTURES, FOR ADDITIONAL INFORMATION.
- ALL DIMENSIONS ARE IN MILLIMETRES UNLESS OTHERWISE NOTED.
- 'SN' DENOTES MINISTRY STOCK NUMBER.

SCALE 1:5



STIFFENER PLATE  
(TYPICAL 2 LOCATIONS)

No.	Revision	Date	BREAKAWAY SIGN STRUCTURE STUB POST KIT DETAILS	
F				<b>BRITISH COLUMBIA</b> Ministry of Transportation and Highways
E				
D				
C				
B				
A				
			SPECIFICATION DRAWING No. MS330.2	