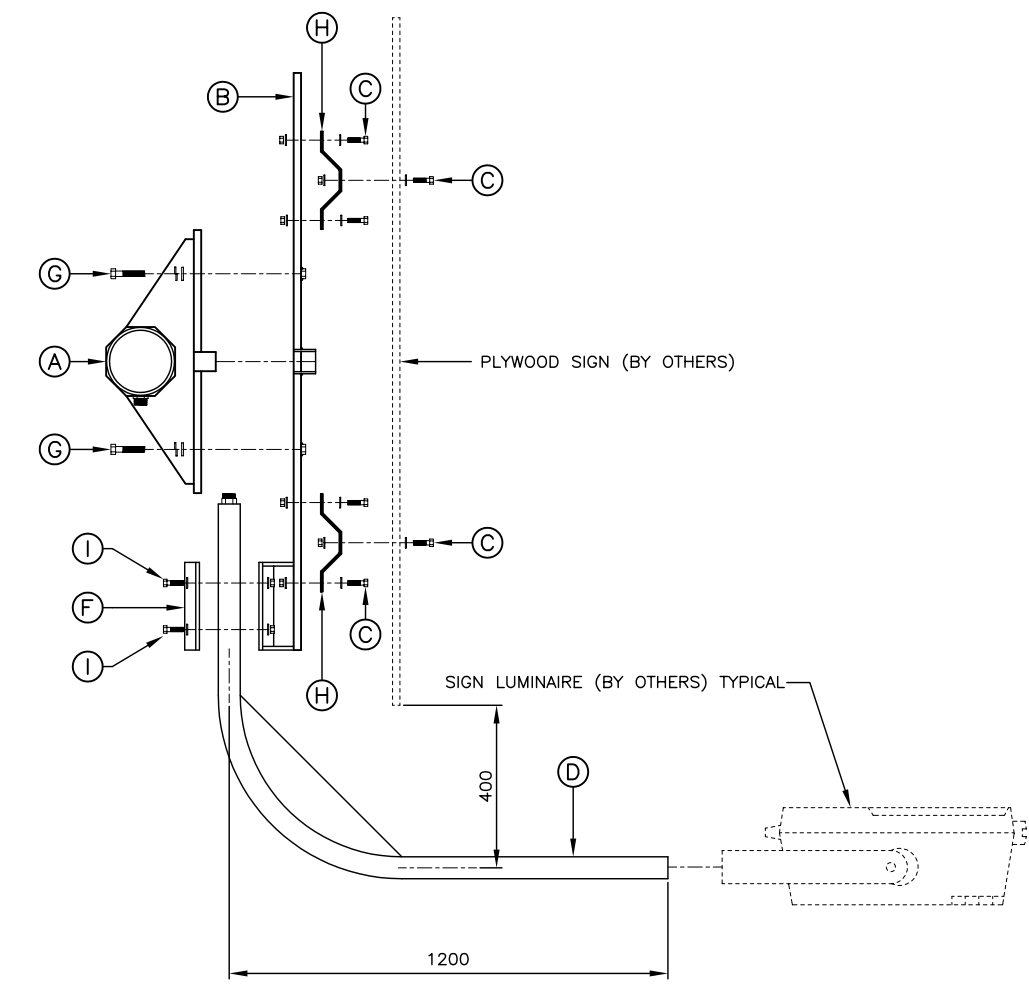
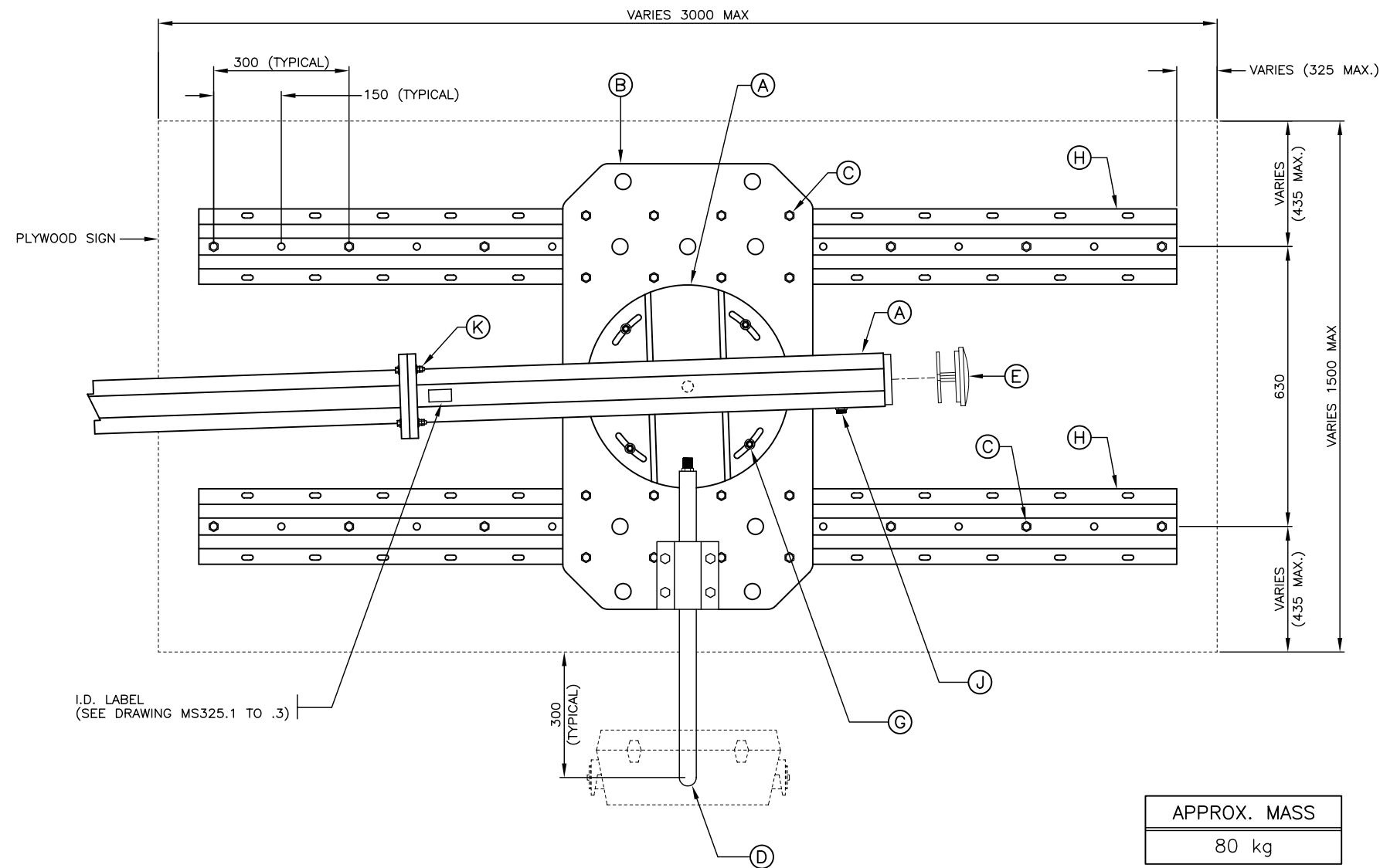


TYPE LB SIGN MOUNTING KIT (SN2096)		
ITEM	QUANTITY	DESCRIPTION
A	1	TYPE LB SIGN ARM
B	1	SIGN SUPPORT MOUNTING PLATE
C	32	3/8"φ 1 1/2" LONG BOLT, NUT, 2 FLATWASHERS, LOCKWASHER AND NYLON WASHER.
D	1	SIGN LUMINAIRE PIPE BRACKET
E	1	PLASTIC END CAP
F	1	PIPE MOUNTING CLAMP
G	4	1/2"φ x 1 1/4" LONG BOLT, FLATWASHER AND LOCKWASHER.
H	2	HORIZONTAL SIGN SUPPORTS
I	4	1/2"φ x 1 1/2" LONG BOLT, NUT, 2 FLATWASHERS AND LOCKWASHER.
J	1	THREADED PLUGS.
K	4	5/8"φ x 3" LONG BOLT, 2 NUTS AND 2 FLATWASHERS



- NOTES
- SEE MATERIAL STANDARD SPECIFICATIONS CHAPTER 301 - TRAFFIC SIGNAL, LUMINAIRE, AND SIGN POLE STRUCTURES FOR ADDITIONAL INFORMATION.
  - ALL DIMENSIONS ARE IN MILLIMETRES UNLESS OTHERWISE NOTED.
  - 'SN' DENOTES MINISTRY STOCK NUMBER.

NOT TO SCALE

No.	Description	Date
J		
I		
H		
G		
F		
E		
D		
C		
B		
A	GENERAL REVISIONS	
	REVISION	

**TYPE LB SIGN MOUNTING KIT**

**ASSEMBLY DETAILS**

**BRITISH COLUMBIA** Ministry of Transportation and Highways

Drawing No. **MS319.1**

**A**