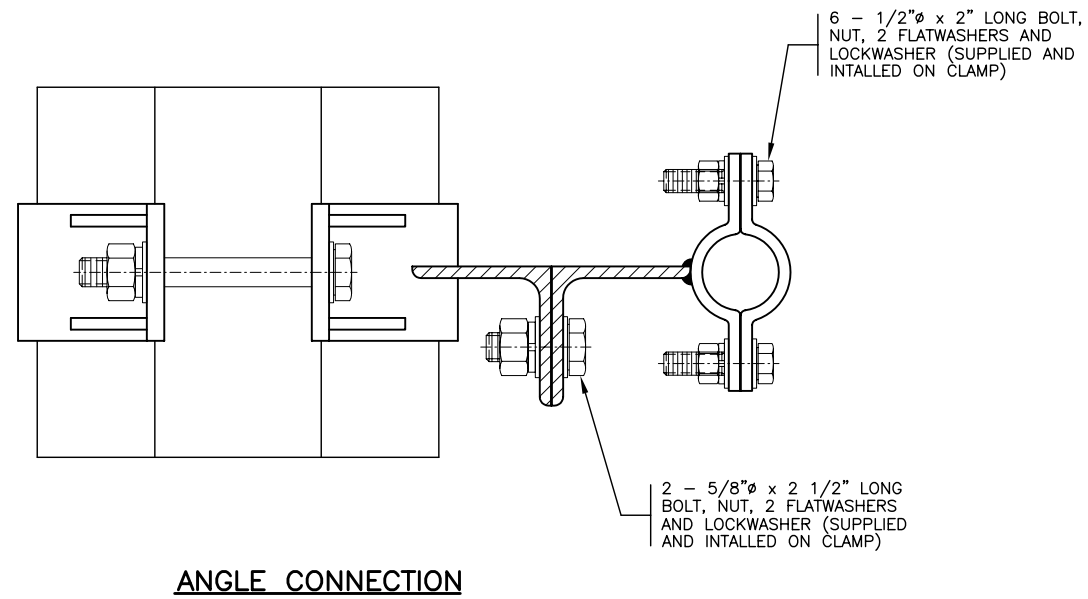
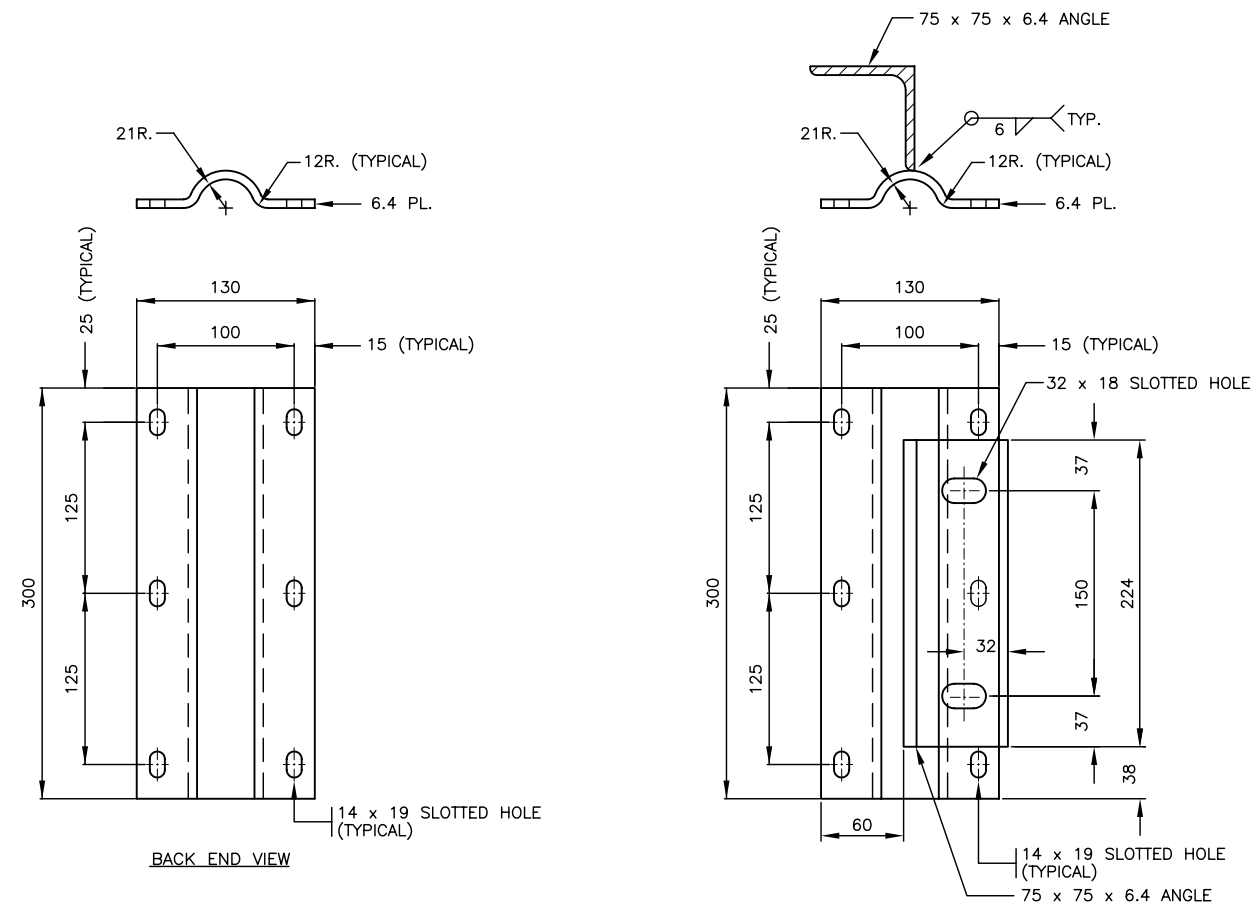
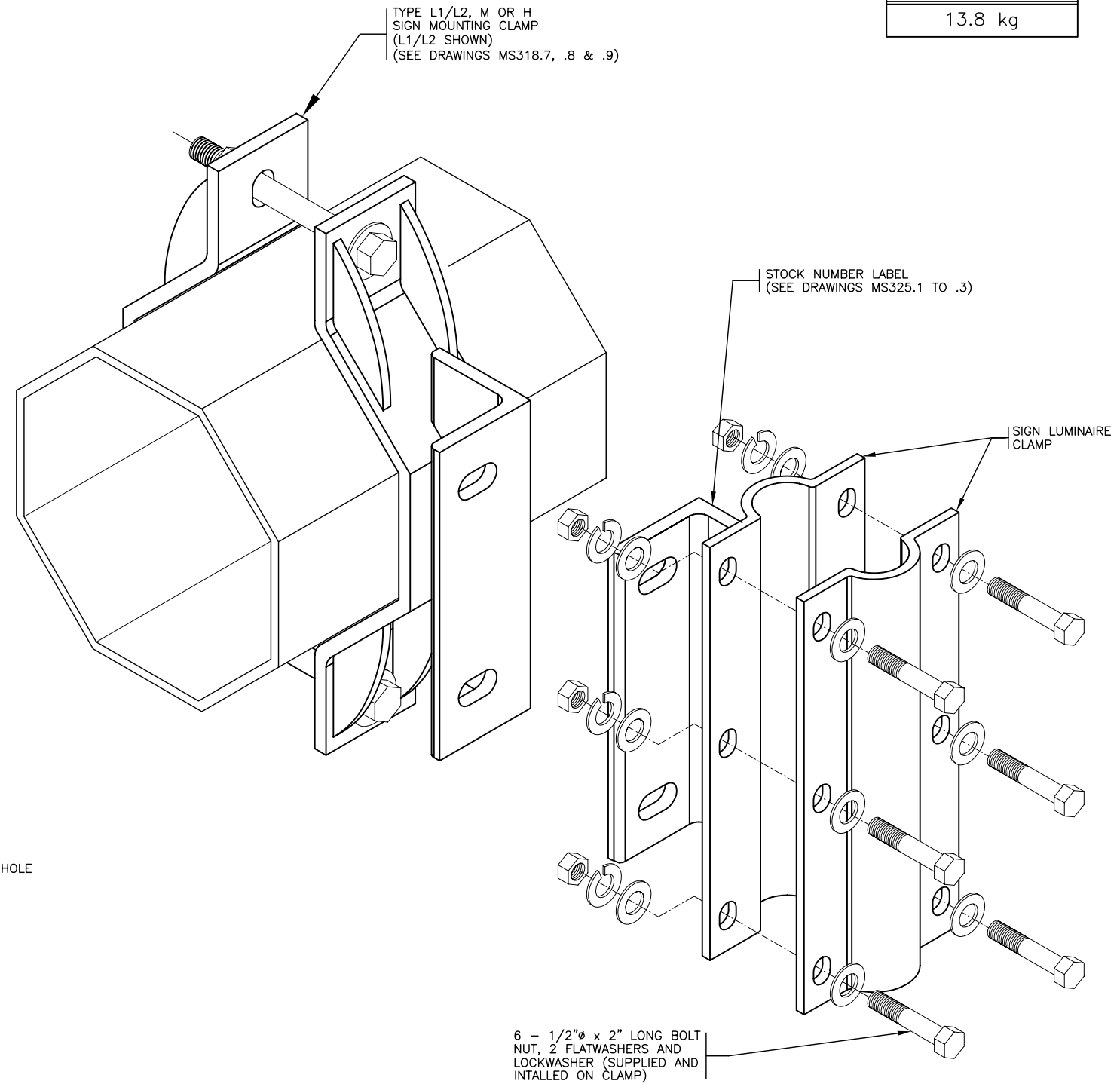


APPROX. MASS  
13.8 kg



**ANGLE CONNECTION**



**PIPE MOUNTING CLAMP**

**TYPE L1/L2, M & H SIGN LUMINAIRE MOUNTING CLAMPS**  
(L1/L2 - SN2106A, M - SN2107, H - SN2108)

**NOTES**

- SEE MATERIAL STANDARD SPECIFICATIONS CHAPTER 301 - TRAFFIC SIGNAL, LUMINAIRE, AND SIGN POLE STRUCTURES FOR ADDITIONAL INFORMATION.
- ALL DIMENSIONS ARE IN MILLIMETRES UNLESS OTHERWISE NOTED.
- 'SN' DENOTES MINISTRY STOCK NUMBER.
- TOLERANCE ±3mm

NOT TO SCALE

No.	Description	Date
J		
I		
H		
G		
F		
E		
D		
C	PIPE BRACKET MOVED TO OPPOSITE SIDE OF ARM	NOV96
B	GENERAL REVISIONS	AUG96
A		
REVISION		

**TYPE L1/L2, M & H SIGN LUMINAIRE MOUNTING CLAMPS**

**DETAILS**



Ministry of Transportation and Highways

Drawing No. MS318.11