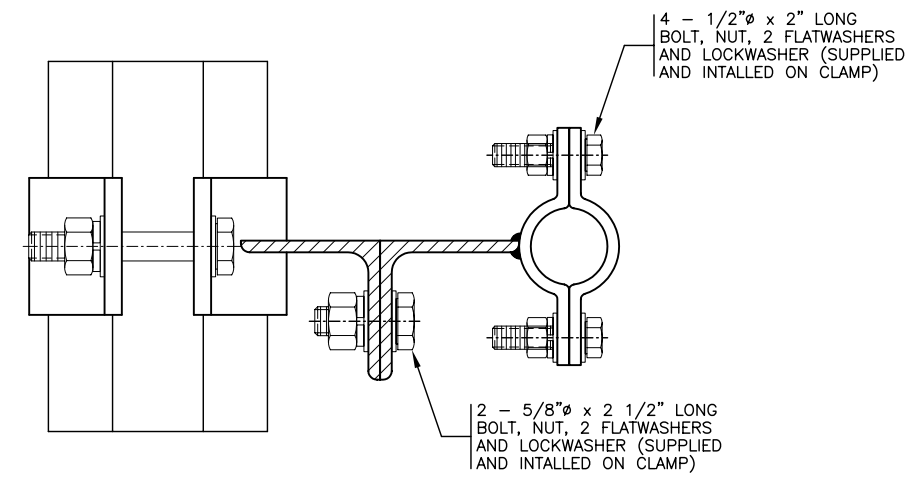
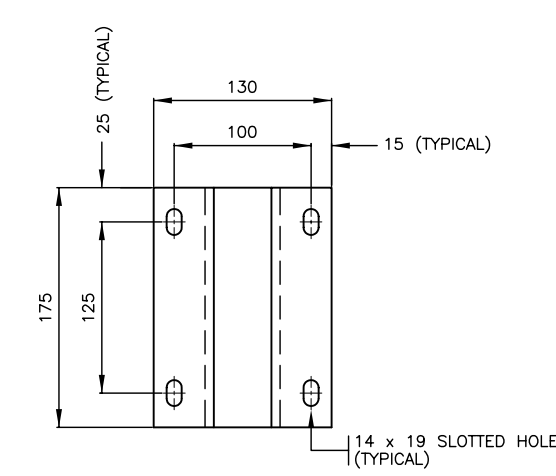


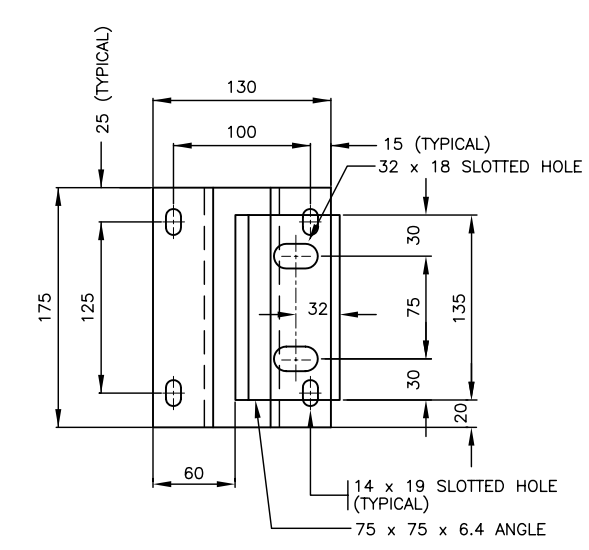
APPROX. MASS
7.8 kg



ANGLE CONNECTION



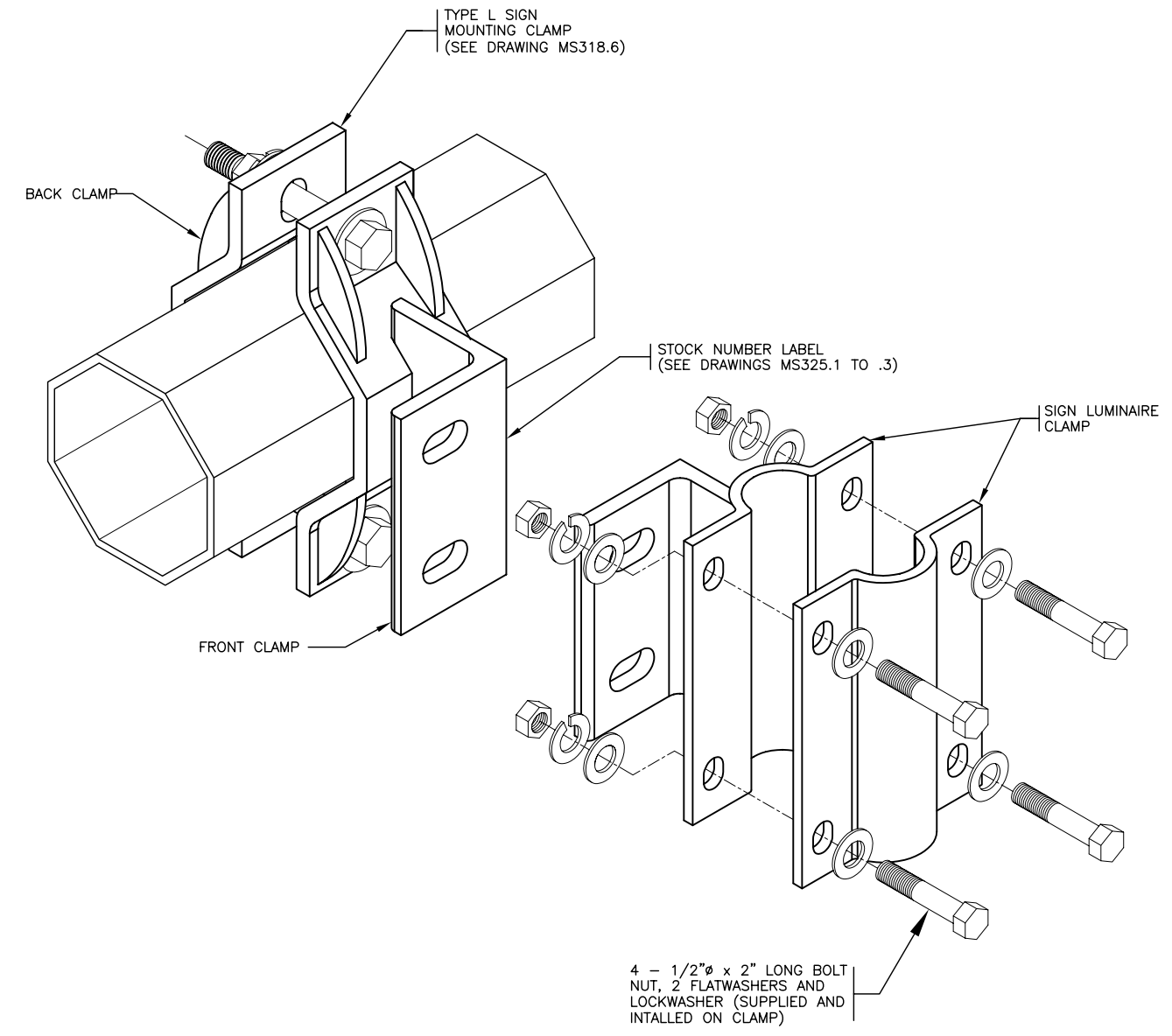
BACK END VIEW



FRONT END VIEW

PIPE MOUNTING CLAMP

- NOTES**
- SEE MATERIAL STANDARD SPECIFICATIONS CHAPTER 301 - TRAFFIC SIGNAL, LUMINAIRE, AND SIGN POLE STRUCTURES FOR ADDITIONAL INFORMATION.
 - ALL DIMENSIONS ARE IN MILLIMETRES UNLESS OTHERWISE NOTED.
 - 'SN' DENOTES MINISTRY STOCK NUMBER.
 - TOLERANCE ±3mm



TYPE L SIGN LUMINAIRE MOUNTING CLAMPS
(SN2106)

NOT TO SCALE

No.	Description	Date
J		
I		
H		
G		
F		
E		
D		
C		
B	PIPE BRACKET MOVED TO OPPOSITE SIDE OF ARM	NOV96
A	GENERAL REVISIONS	AUG96
REVISION		

TYPE L SIGN LUMINAIRE MOUNTING CLAMPS

DETAILS

<p>BRITISH COLUMBIA</p>	<p>Ministry of Transportation and Highways</p>	<p>Drawing No. MS318.10</p>
--------------------------------	--	--

B