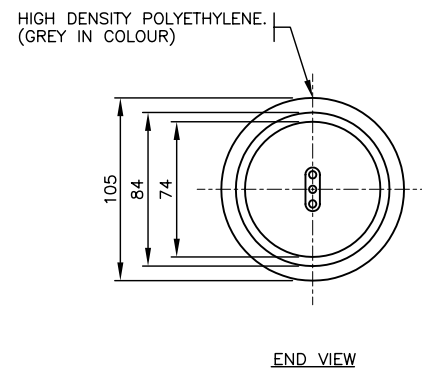
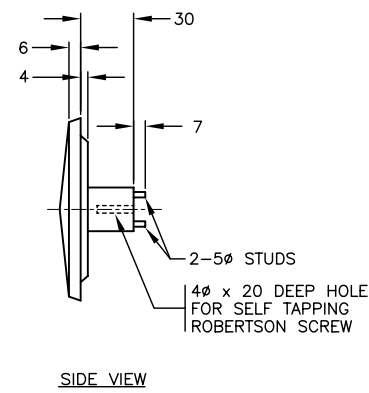


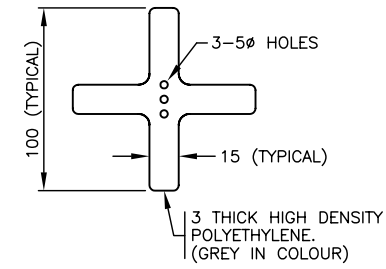
**PLASTIC END CAP WELD DETAIL**



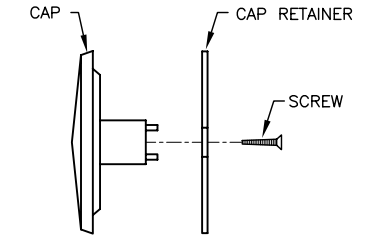
**CAP**



**SIDE VIEW**



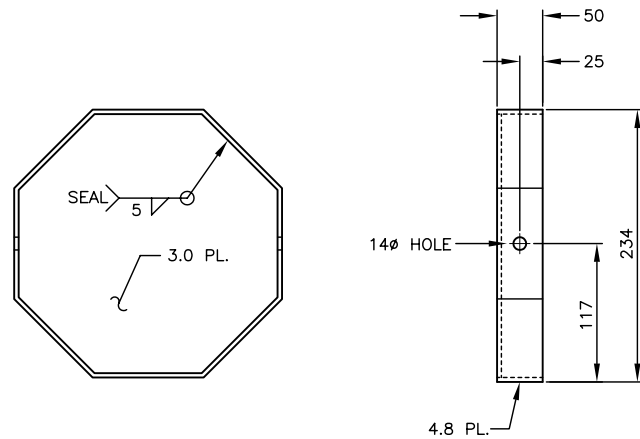
**CAP RETAINER**



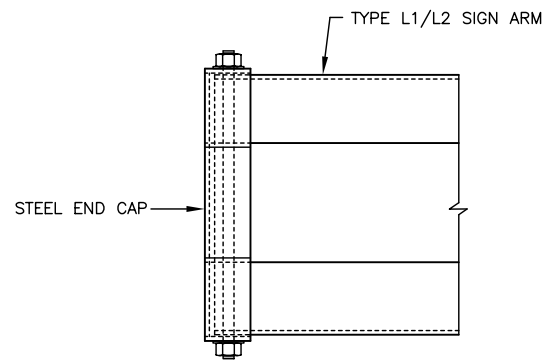
**ASSEMBLY DETAIL**

CAPS SHALL SECURELY ATTACH TO ARMS OR SHAFTS

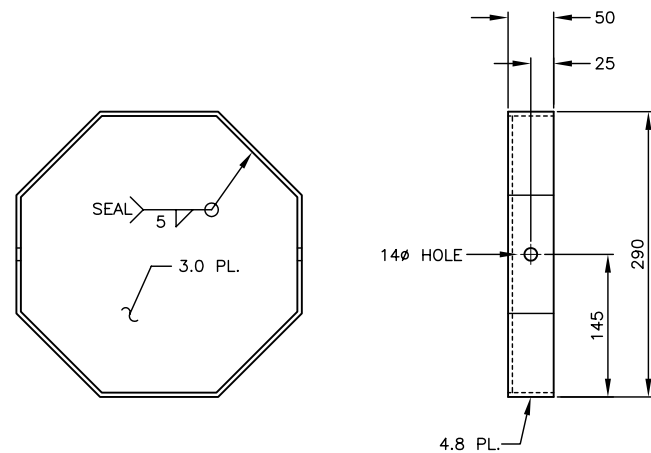
**PLASTIC END CAP DETAILS**



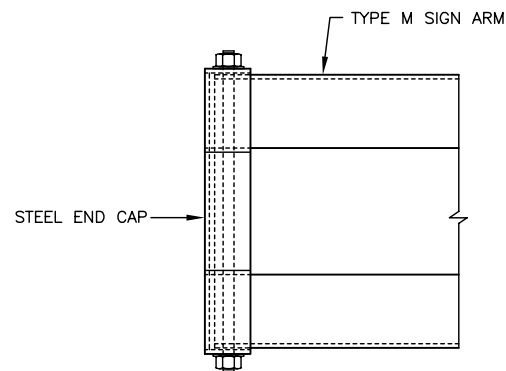
**STEEL END CAP FOR TYPE L1/L2 SIGN ARM**



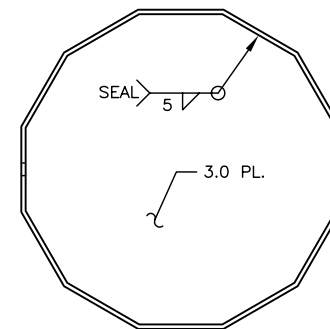
**ASSEMBLED VIEW**



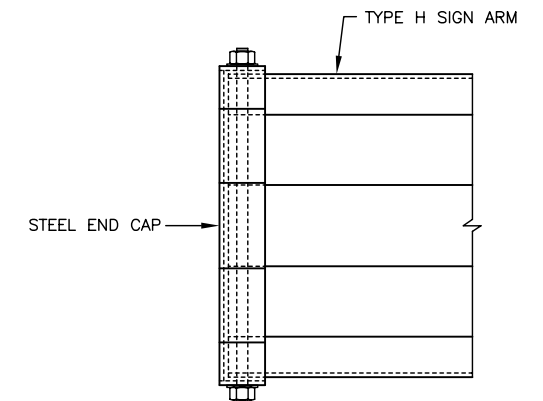
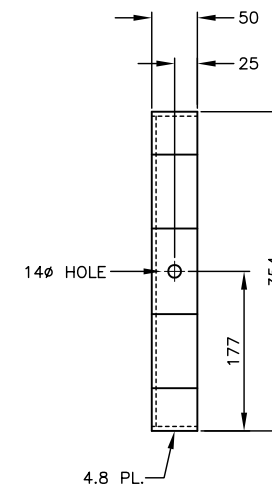
**STEEL END CAP FOR TYPE M SIGN ARM**



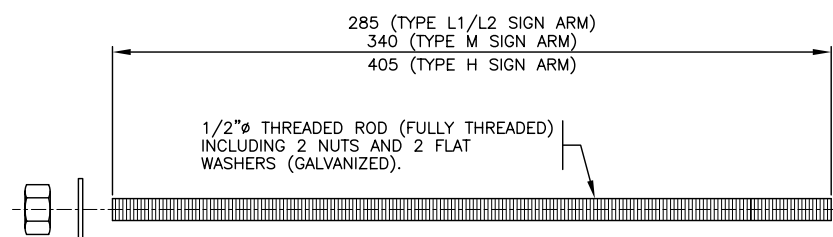
**ASSEMBLED VIEW**



**STEEL END CAP FOR TYPE H SIGN ARM**



**ASSEMBLED VIEW**



**BOLT FOR STEEL END CAP**

GALVANIZED FLATWASHER (TYPICAL)  
GALVANIZED HEX NUT (TYPICAL)

**NOTES**

1. SEE MATERIAL STANDARD SPECIFICATIONS CHAPTER 301 - TRAFFIC SIGNAL, LUMINAIRE, AND SIGN POLE STRUCTURES FOR ADDITIONAL INFORMATION.
2. ALL DIMENSIONS ARE IN MILLIMETRES UNLESS OTHERWISE NOTED.
3. 'SN' DENOTES MINISTRY STOCK NUMBER.
4. STEEL END CAPS SHALL BE GALVANIZED.

NOT TO SCALE

No.	Description	Date
J		
I		
H		
G		
F		
E		
D		
C		
B		
A		

<b>END CAPS</b>	
<b>DETAILS</b>	
 <b>BRITISH COLUMBIA</b> Ministry of Transportation and Highways	Drawing No. <b>MS317.3</b>