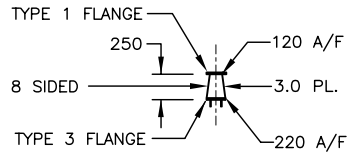


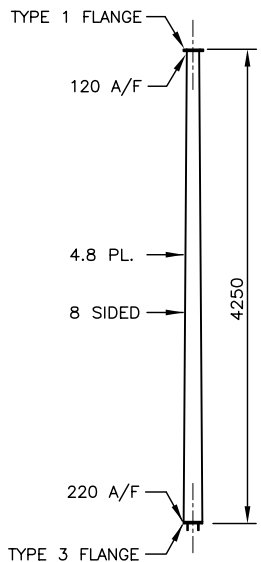
PARTS LIST FOR TYPE L SIGNAL/SIGN POLE		
PART	MINISTRY STOCK NUMBER	APPROX. MASS (kg)
TYPE L POLE SHAFT	SN2052	442
TYPE 3L SIGNAL ARM - 3.0 m	SN2053	97
TYPE 4L SIGNAL ARM - 4.0 m	SN2054	118
TYPE 5L SIGNAL ARM - 5.0 m	SN2055	173
TYPE 6L SIGNAL ARM - 6.0 m	SN2056	201
TYPE 7L SIGNAL ARM - 7.0 m	SN2057	229
TYPE 8L SIGNAL ARM - 8.0 m	SN2058	259
TYPE 9L SIGNAL ARM - 9.0 m	SN2059	284
TYPE 10L SIGNAL ARM - 10.0 m	SN2060	377
TYPE 11L SIGNAL ARM - 11.0 m	SN2061	410
TYPE 3LE SIGNAL ARM EXTENSION - 3.0 m	SN2065	114
TYPE L SIGN ARM	SN2095	20 PER METRE
TYPE 1.2L SIGN ARM - 1.2 m	SN2093	24
TYPE L1 SIGN ARM	SN2095A	39 PER METRE
TYPE L2 SIGN ARM	SN2095B	46 PER METRE
TYPE LB SIGN KIT	SN2096	100
TYPE LS SIGN ARM EXTENSION	SN2094	45 PER METRE
TYPE 3LS SIGN ARM EXTENSION	SN2094A	135
TYPE 4LS SIGN ARM EXTENSION	SN2094B	180
TYPE 5LS SIGN ARM EXTENSION	SN2094C	225
TYPE 4.25L LUMINAIRE ARM EXTENSION - 4.25 m	SN2062	82
TYPE 1.75L LUMINAIRE ARM EXTENSION - 1.75 m	SN2063	29
TYPE 0.25L LUMINAIRE ARM EXTENSION - 0.25 m	SN2064	10
TYPE 2A LUMINAIRE ARM	SN1832	35
TYPE 2C LUMINAIRE ARM	SN1833	65
TYPE 1 FLANGE COVER PLATE	SN1367	1.5
TYPE 2 FLANGE COVER PLATE	SN2083	4
TYPE 3 FLANGE COVER PLATE	SN2084	4
POST TOP TENON	SN1831	5
TYPE L POLE BOLT KIT	SN2090	14

NOTES

- SEE MATERIAL STANDARD SPECIFICATIONS CHAPTER 301 - TRAFFIC SIGNAL, LUMINAIRE, AND SIGN POLE STRUCTURES FOR ADDITIONAL INFORMATION.
- SEE DRAWING MS311.5 FOR BOLT KIT DETAILS.
- SEE DRAWING MS317.6 FOR POST TOP TENON DETAIL.
- SEE DRAWING MS317.5 FOR FLANGE COVER PLATE DETAIL.
- ALL DIMENSIONS ARE IN MILLIMETRES UNLESS OTHERWISE NOTED.
- 'SN' DENOTES MINISTRY STOCK NUMBER.

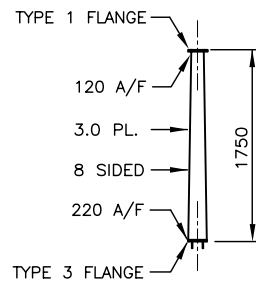


TYPE 0.25L LUMINAIRE ARM EXTENSION

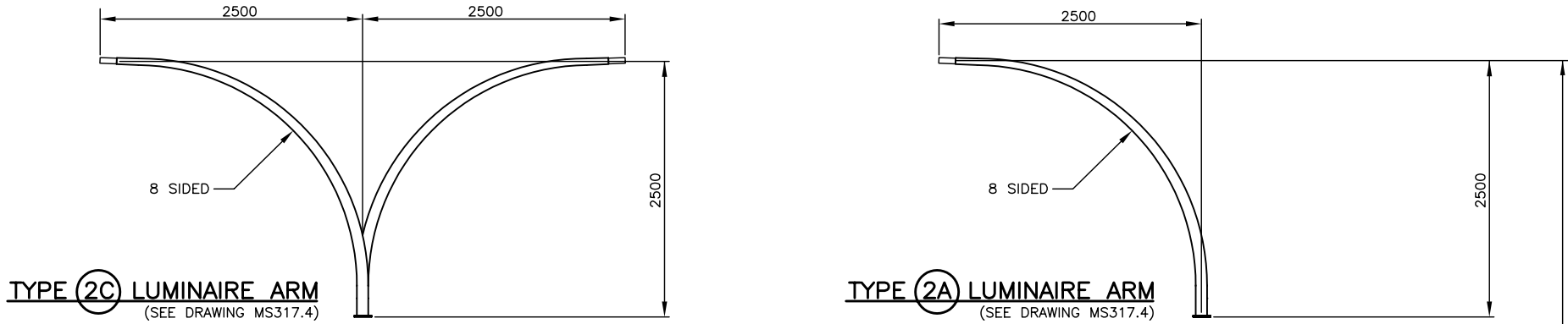


TYPE 4.25L LUMINAIRE ARM EXTENSION

'A/F' DENOTES ACROSS THE FLATS

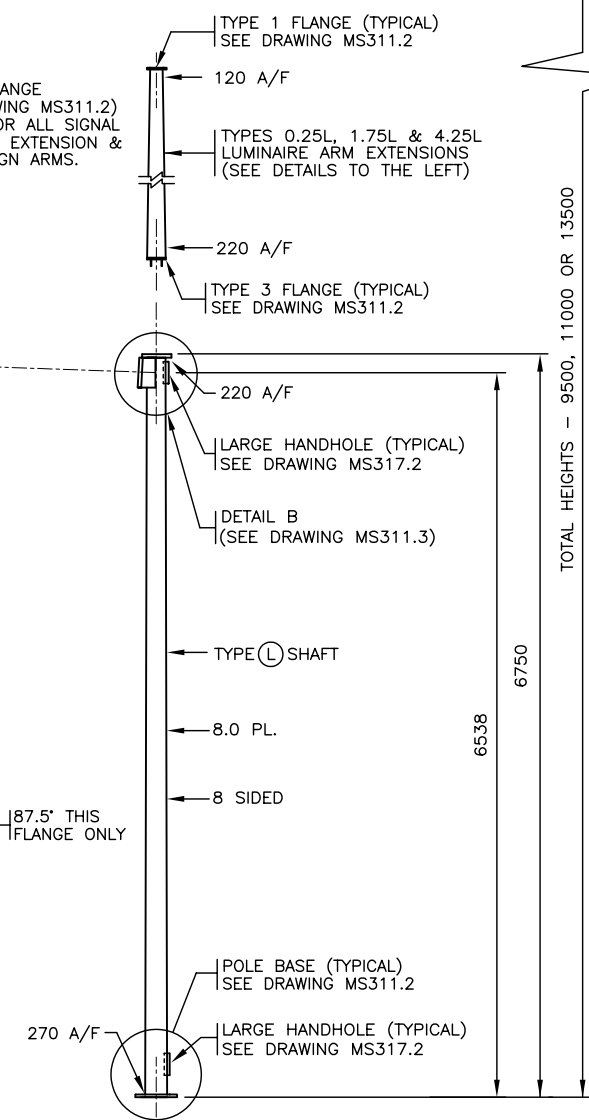
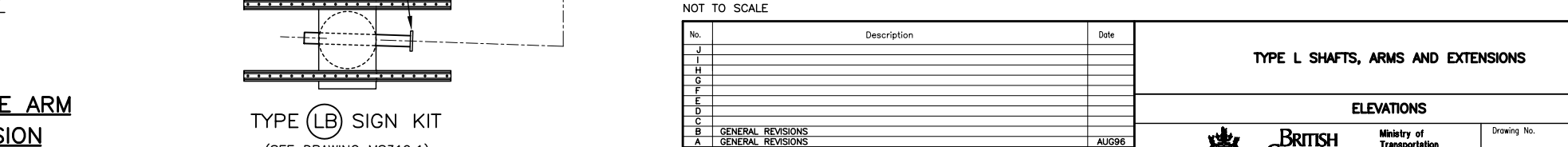
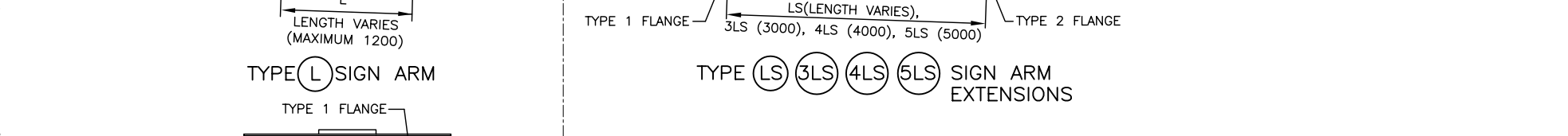
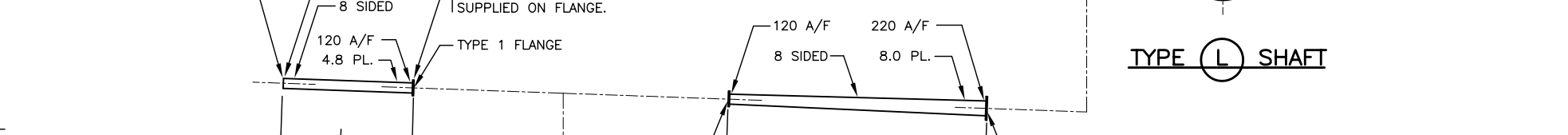
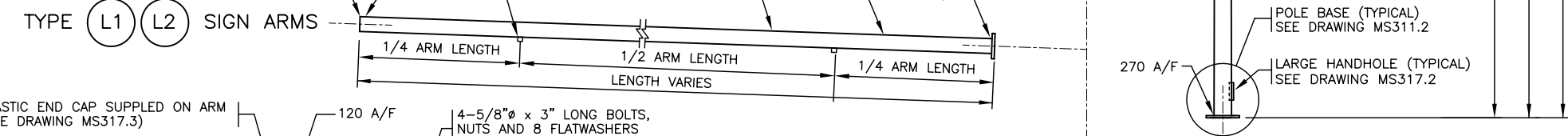
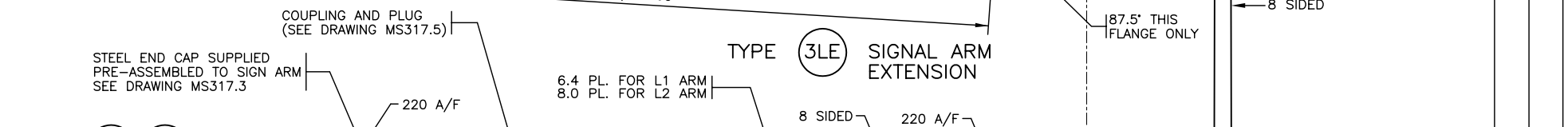
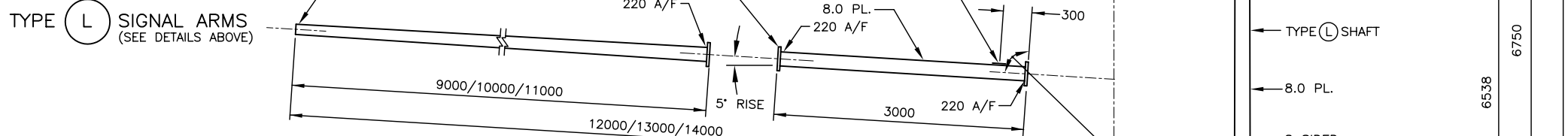
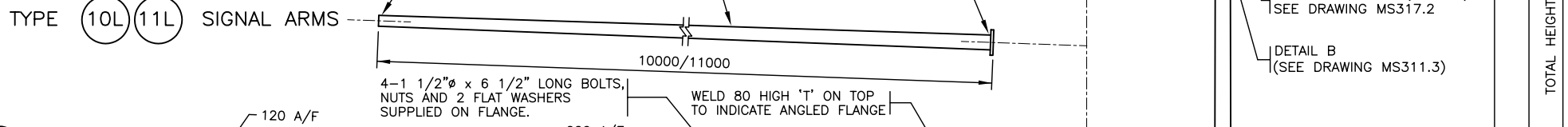
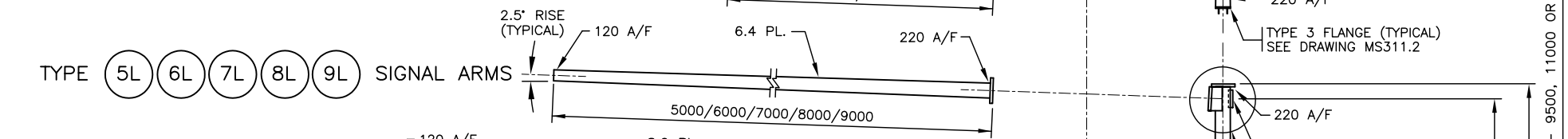
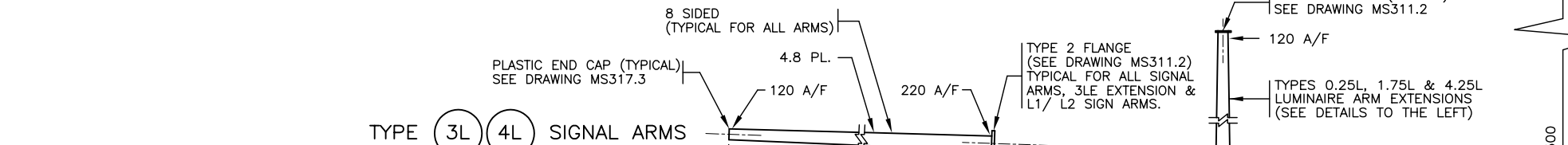


TYPE 1.75L LUMINAIRE ARM EXTENSION



TYPE 2C LUMINAIRE ARM
(SEE DRAWING MS317.4)

TYPE 2A LUMINAIRE ARM
(SEE DRAWING MS317.4)



TOTAL HEIGHTS - 9500, 11000 OR 13500

6538

NOT TO SCALE

No.	Description	Date
J		
I		
H		
G		
F		
E		
D		
C		
B	GENERAL REVISIONS	
A	GENERAL REVISIONS	AUG96
REVISION		

TYPE L SHAFTS, ARMS AND EXTENSIONS

ELEVATIONS



Ministry of Transportation and Highways

Drawing No.

MS311.1

B