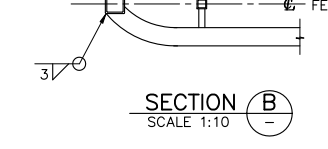
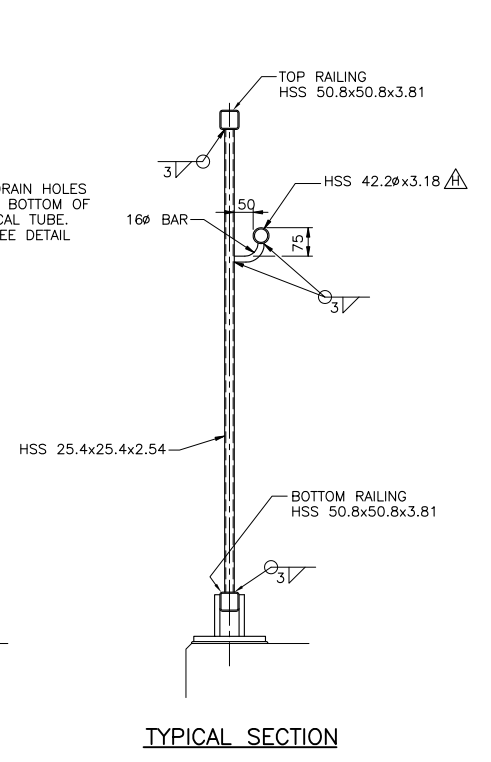
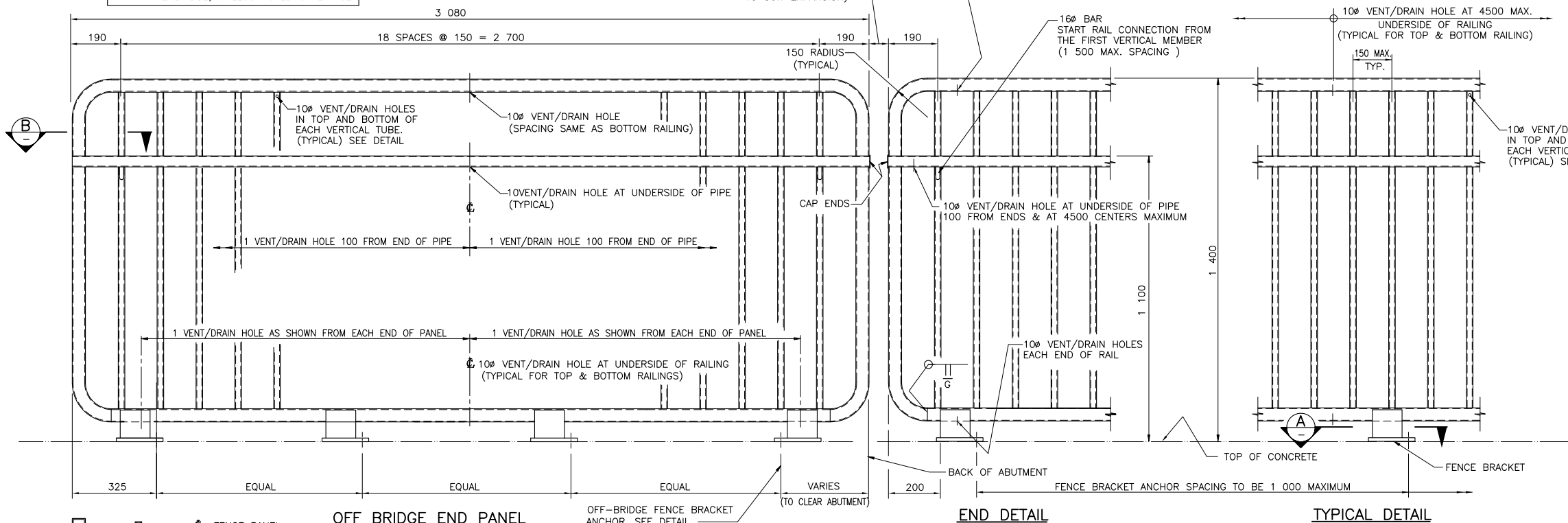


NOTE: PANEL SECTION OFF BRIDGE TO BE ALIGNED WITH SIDEWALK RAILING ON THE BRIDGE, UNLESS NOTED OTHERWISE.

75 (OR AS DIRECTED BY THE MINISTRY'S REPRESENTATIVE TO SUIT EXPANSION)

NOTE: FENCE PANEL LENGTH TO BE 4 500 MINIMUM TO 7 500 MAXIMUM.

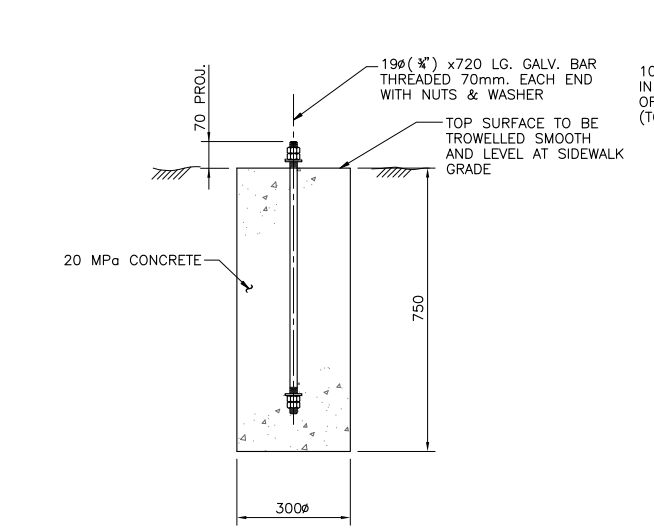


OFF BRIDGE END PANEL

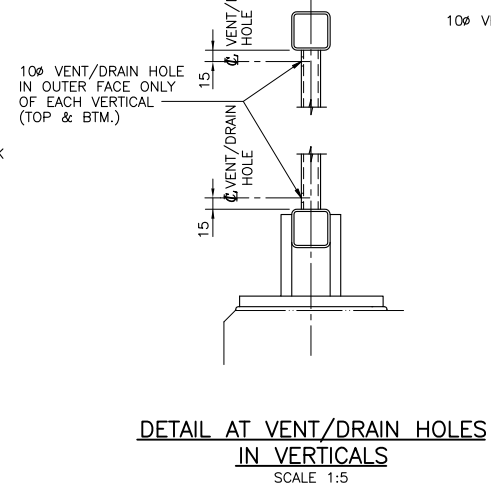
END DETAIL

TYPICAL DETAIL

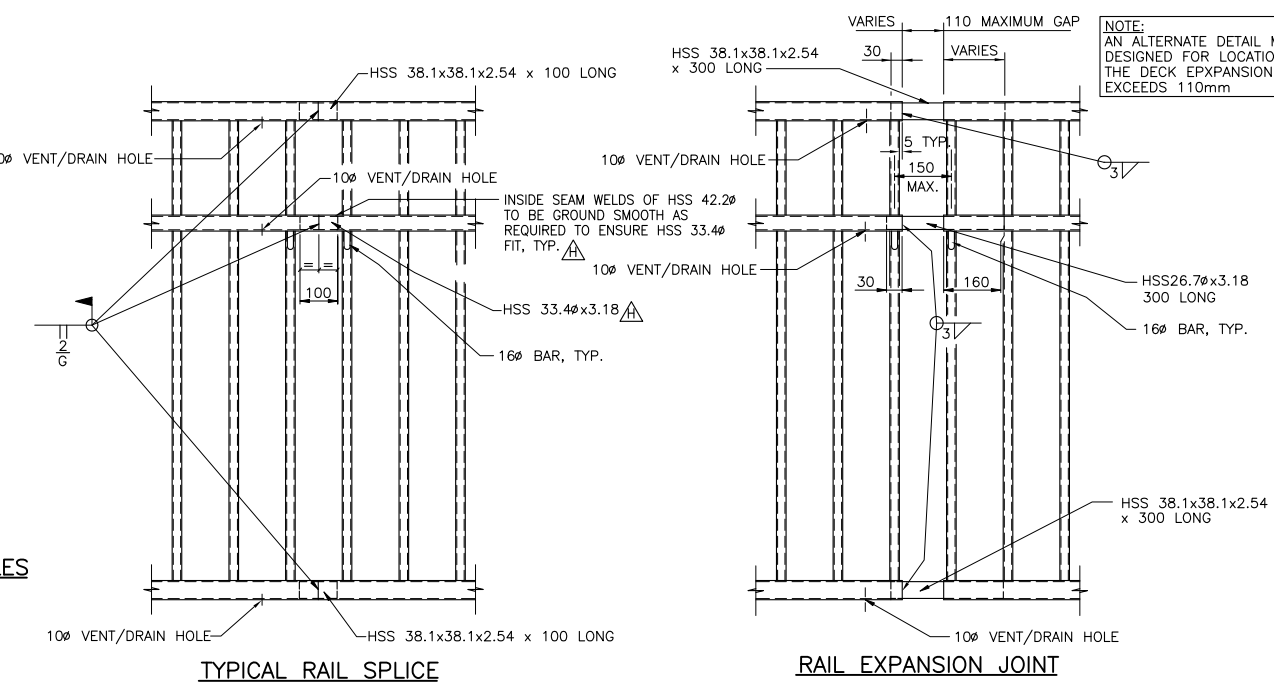
TYPICAL SECTION



OFF-BRIDGE FENCE BRACKET ANCHOR DETAIL

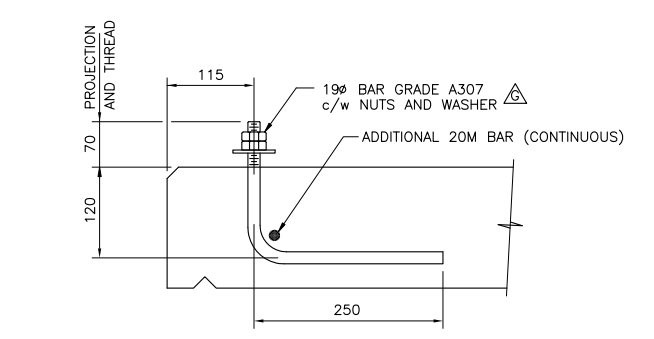


DETAIL AT VENT/ DRAIN HOLES IN VERTICALS SCALE 1:5

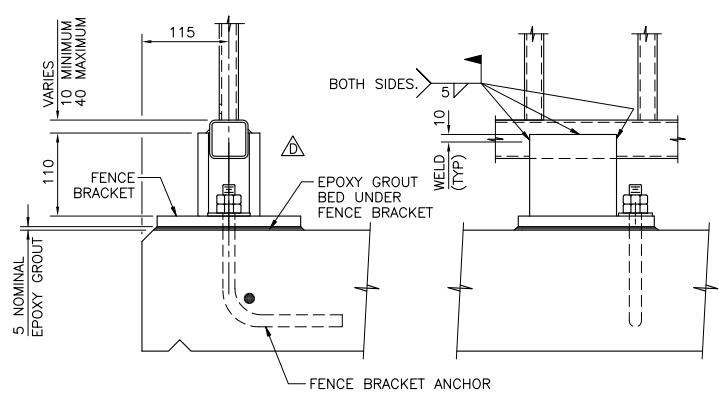


TYPICAL RAIL SPLICE

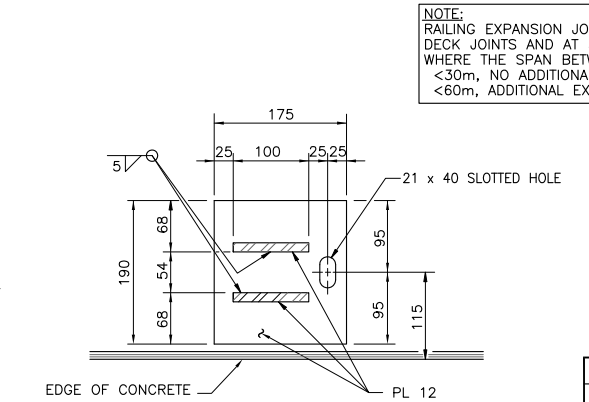
RAIL EXPANSION JOINT



FENCE BRACKET ANCHOR SCALE 1:5



END VIEW TYPICAL DETAIL AT FENCE BRACKET SCALE 1:5



SECTION A SCALE 1:5

NOTE: AN ALTERNATE DETAIL MUST BE DESIGNED FOR LOCATIONS WHERE THE DECK EXPANSION JOINT GAP EXCEEDS 110mm

NOTES:

- FABRICATION TO BE IN ACCORDANCE WITH M.O.T. STANDARD SPECIFICATIONS FOR HIGHWAY CONSTRUCTION, SECTION 422, 'MISCELLANEOUS STEELWORK'.
- STEEL SHALL CONFORM TO:
  - ALL HSS TUBING TO BE CAN/CSA G40.21, GRADE 350W OR ASTM A500 GRADE C.
  - ALL OTHER STEEL TO BE CAN/CSA G40.21, GRADE 300W
- FENCE SECTIONS, BRACKETS AND ANCHORS TO BE GALVANIZED AFTER FABRICATION.
- GALVANIZING SHALL CONFORM TO CAN/CSA G164M.
- FIELD CONNECTIONS TO BE WELDED.
- RAIL ELEMENTS TO BE USED IN CURVES HAVING A RADIUS OF 300m OR LESS SHALL BE SHOP-FORMED TO THE REQUIRED CURVATURE.
- FENCE BRACKETS ARE TO BE INSTALLED ON A 5 mm NOMINAL THICK THIXTROPIC EPOXY LEVELLING COURSE TO ENSURE A COMPLETE BEARING SURFACE.
- FOR FENCES ON PEDESTRIAN OVERPASS RAMP, THE ENDS OF PANELS AND VERTICAL TUBES SHALL BE PLUMB.

Rev	Date	Description	Init
D	00/11/21	END VIEW - TYPICAL DETAIL AT FENCE BRACKET	GDW
E	JUNE 2005	REVISED MINISTRY BORDER	WHK
F	DEC 2005	GENERAL REVISIONS	DRM
G	JUNE 2010	ANCHOR SIZE, EXP. JOINT SPACING	WHK
H	DEC 2014	HAND RAIL & SPLICE, SIZE & MATERIAL CHANGED	WHK

REVISIONS

BRITISH COLUMBIA Ministry of Transportation & Infrastructure Bridge Engineering

STANDARD STEEL BICYCLE FENCE

AUTHORIZED BY	
ORIGINAL SIGNED BY P BRETT DIRECTOR OF BRIDGE ENGINEERING DATE 1997-04-21	ORIGINAL SIGNED BY M. CLARK CHIEF HIGHWAY ENGINEER DATE 1997-04-21

PREPARED UNDER THE DIRECTION OF ORIGINAL SIGNED BY K W HO ENGINEER OF RECORD SENIOR BRIDGE DESIGN ENGINEER DATE 1997-04-21	DESIGNED C.W./K.B. DATE APR. 92 CHECKED J.E.S. DATE 95-03-20 DRAWN K.L. DATE 92-11-24 SCALE AS NOTED NEGATIVE No.
FILE No.	PROJECT No.
REG.	DRAWING No. 2891-2