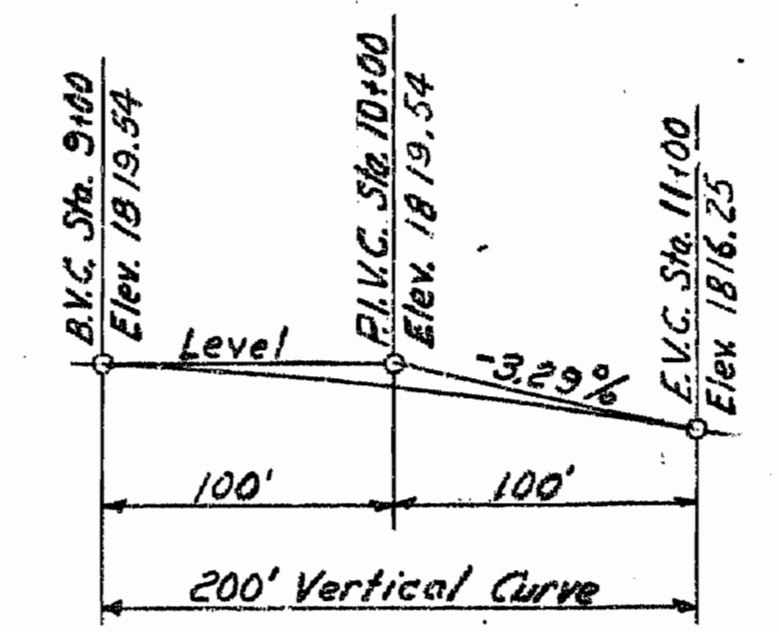
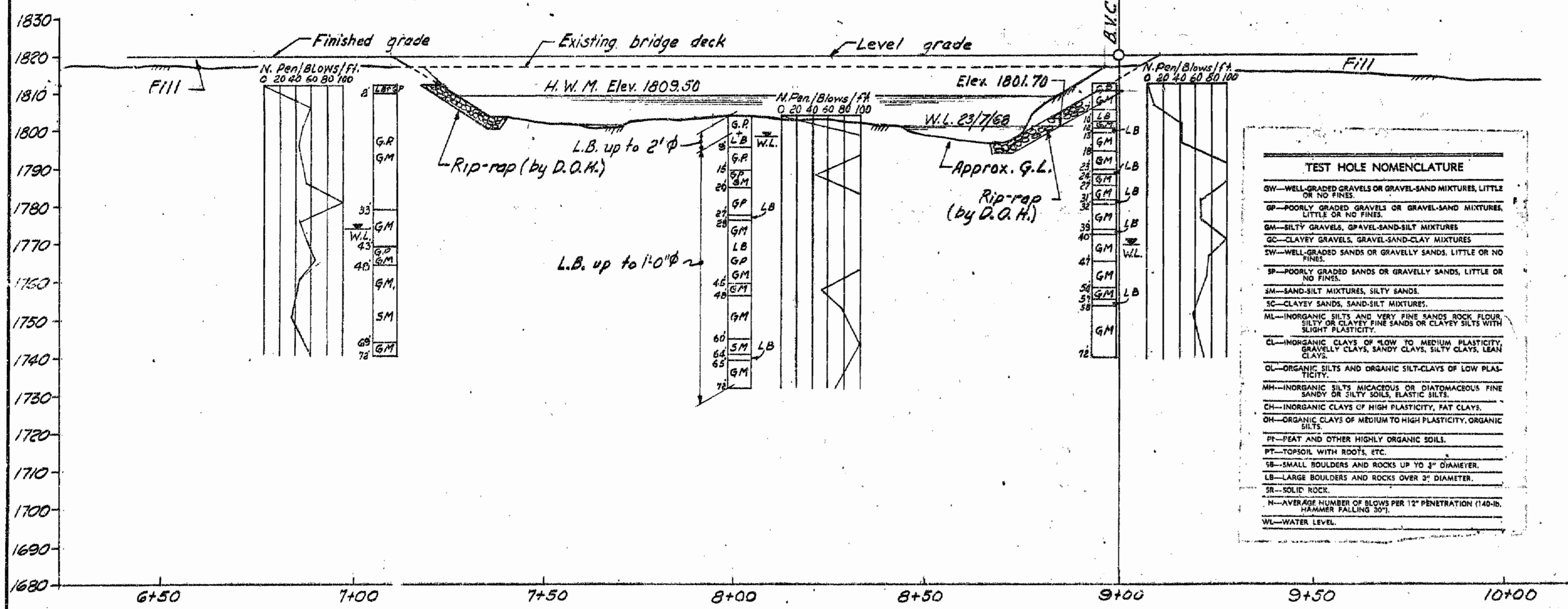


KEY MAP
Scale 1" = 4 mi.



FINISHED GRADE DIAGRAM
Not to Scale

Dwg. No.	Title
789-B	Site Plan
-9	General Arrangement
-10	Substructure Detail
-11	Steelwork sheet N°1
-12	Steelwork sheet N°2
-13	Deck Details
1810-19	Std. Aluminum Railing sht. N°1
-20	Std. Aluminum Railing sht. N°2
-30	Std. Aluminum End Railing 1970 sht. N°1 Arrangement
-31	Std. Aluminum End Railing 1970 sht. N°2 Casting Details
2420-2	Std. Approach Curb 1970



TEST HOLE NOMENCLATURE	
GW	WELL-GRADED GRAVELS OR GRAVEL-SAND MIXTURES, LITTLE OR NO FINE.
GP	POORLY GRADED GRAVELS OR GRAVEL-SAND MIXTURES, LITTLE OR NO FINE.
GM	SILTY GRAVELS, GRAVEL-SAND-SILT MIXTURES.
GC	CLAYEY GRAVELS, GRAVEL-SAND-CLAY MIXTURES.
GW	WELL-GRADED SANDS OR GRAVELLY SANDS, LITTLE OR NO FINE.
SP	POORLY GRADED SANDS OR GRAVELLY SANDS, LITTLE OR NO FINE.
SM	SAND-SILT MIXTURES, SILTY SANDS.
SC	CLAYEY SANDS, SAND-SILT MIXTURES.
ML	INORGANIC SILTS AND VERY FINE SANDS, ROCK FLOUR, SILTY OR CLAYEY FINE SANDS OR CLAYEY SILTS WITH SLIGHT PLASTICITY.
CL	INORGANIC CLAYS OF LOW TO MEDIUM PLASTICITY, GRAVELLY CLAYS, SANDY CLAYS, SILTY CLAYS, LEAN CLAYS.
OL	ORGANIC SILTS AND ORGANIC SILT-CLAYS OF LOW PLASTICITY.
MH	INORGANIC SILTS MICACEOUS OR DIATOMACEOUS FINE SANDY OR SILTY SOILS, FLASTIC SILTS.
CH	INORGANIC CLAYS OF HIGH PLASTICITY, FAT CLAYS.
OH	ORGANIC CLAYS OF MEDIUM TO HIGH PLASTICITY, ORGANIC SILTS.
PT	PEAT AND OTHER HIGHLY ORGANIC SOILS.
PT	TOPSOIL WITH ROOTS, ETC.
SB	SMALL BOULDERS AND ROCKS UP TO 2" DIAMETER.
LB	LARGE BOULDERS AND ROCKS OVER 2" DIAMETER.
SR	SOLID ROCK.
N	AVERAGE NUMBER OF BLOWS PER 12" PENETRATION (140-IB. HAMMER FALLING 50').
WL	WATER LEVEL.

- NOTES
1. Survey: Location
 2. Datum: Geodetic
 3. L.B.M.: Located 150' south of existing New Denver Br. and 48' east of #6 Highway. Spike in 20" Birch tree. Elev. 1806.65

168869

BRITISH COLUMBIA DEPARTMENT OF HIGHWAYS
BRIDGE ENGINEERING BRANCH

NEW DENVER DISTRICT
VERNON-SLOCAN HIGHWAY
NEW DENVER BRIDGE
SITE PLAN

REVISIONS	DATE	BY	REASON
B	Finish grade elev. lowered 6"	P.B. 8.5.78	
A	L.B.M. relocated	RR 4.18.78	

APPROVED	SCALE: 1" = 20'-0" AND AS NOTED
DRAWN	DRAWING No.
CHECKED	789-B