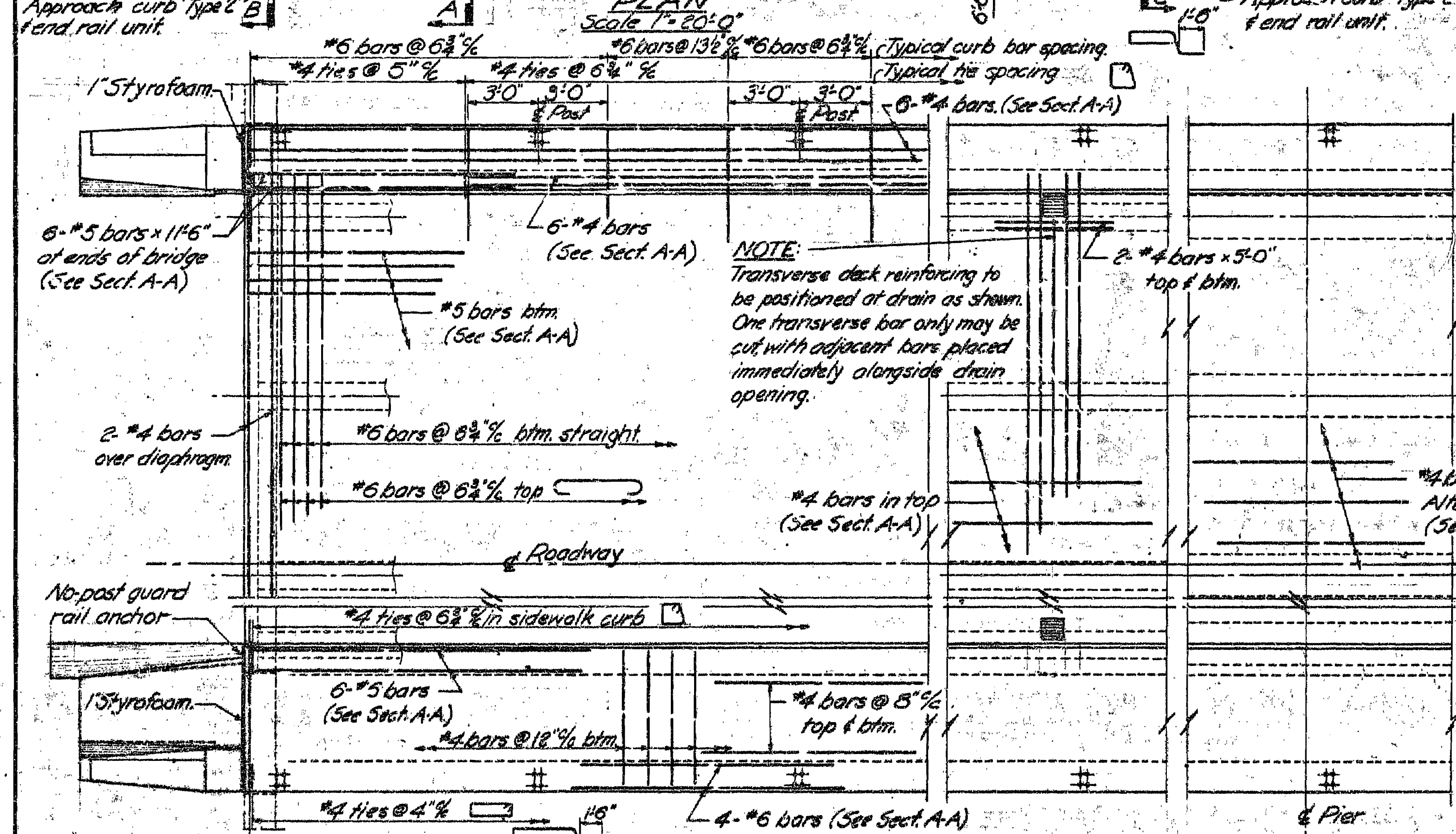
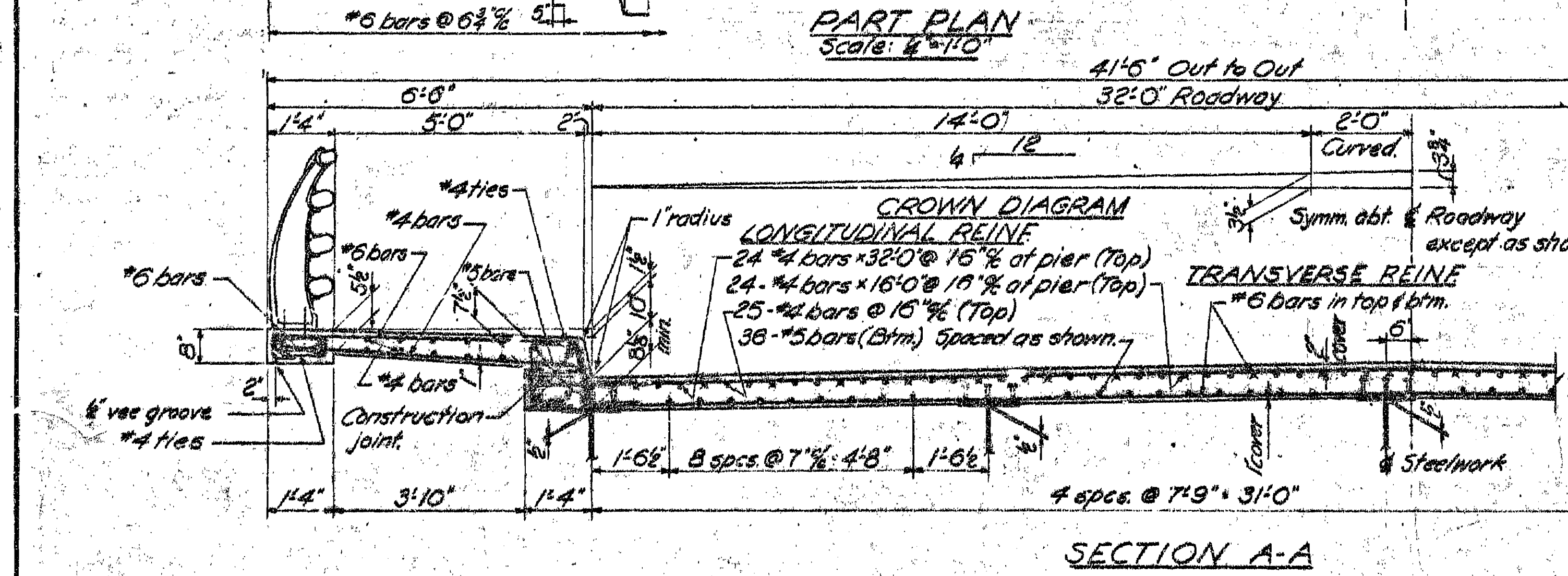


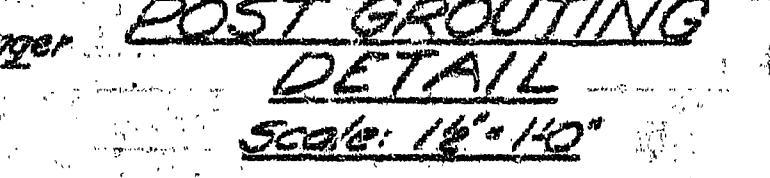
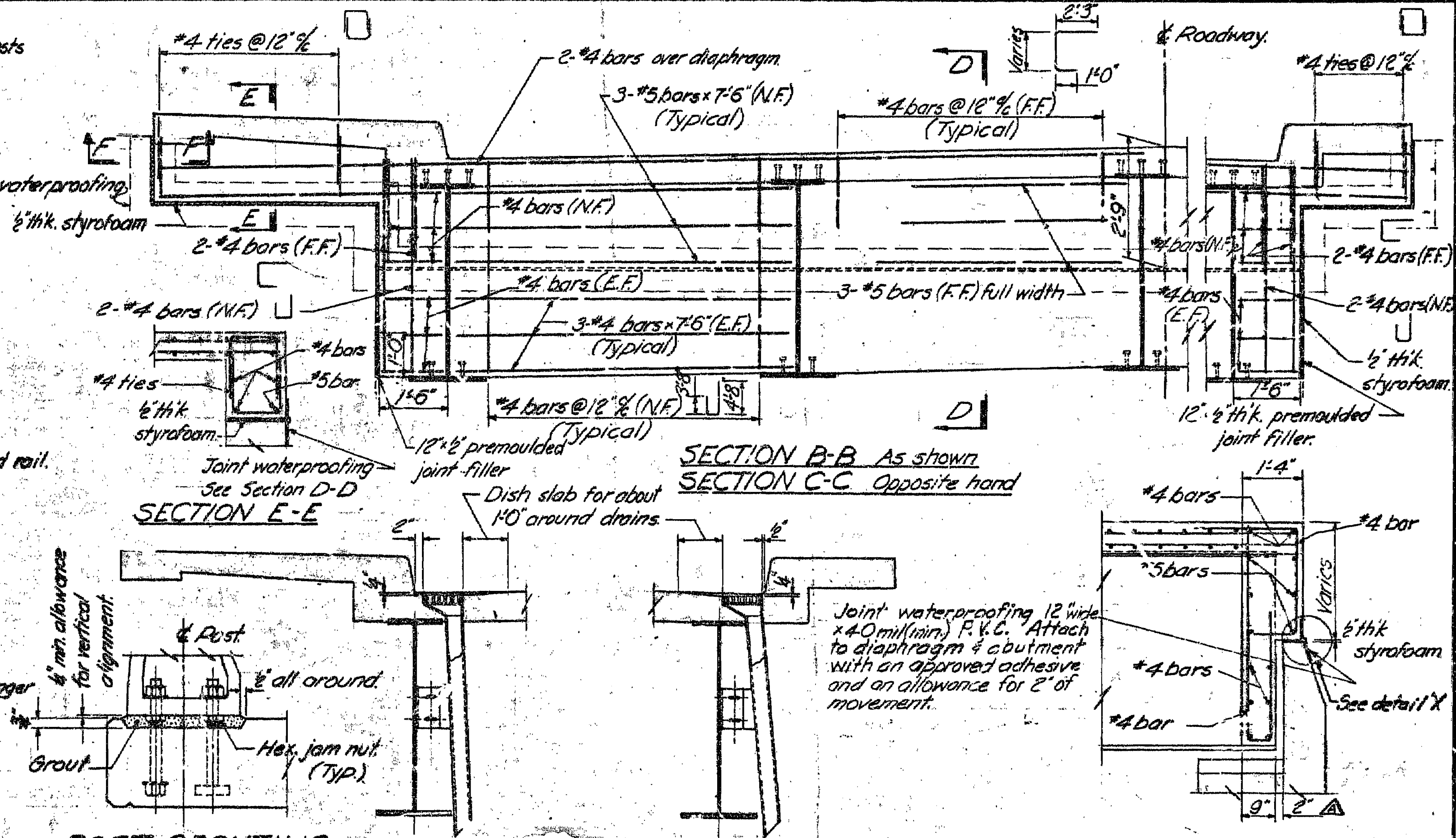
NOTE:-
For details of aluminum posts and railings see Dwg. Nos. 1810-19, 20, 30 & 31.
All fence posts Mk. P-4.
All splices standard except where noted.



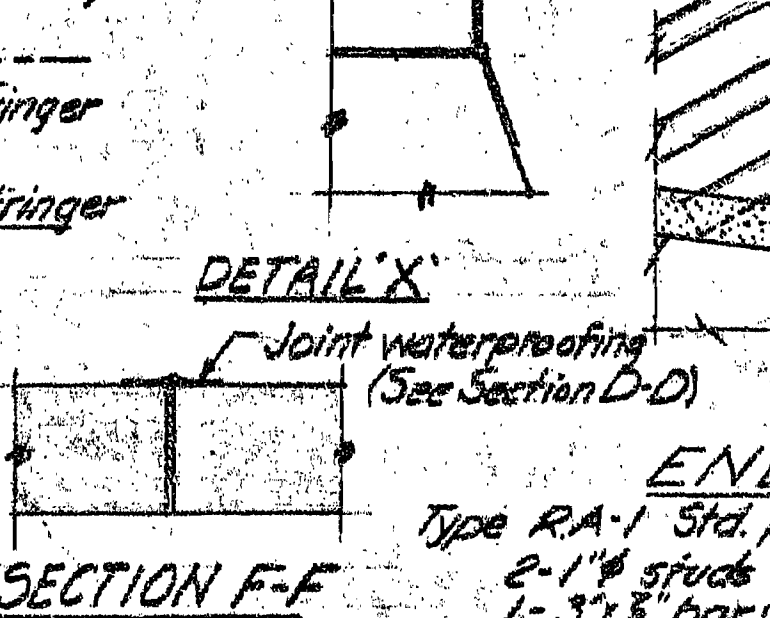
NOTE:
Transverse deck reinforcing to be positioned at drain as shown. One transverse bar only may be cut with adjacent bars placed immediately alongside drain opening.



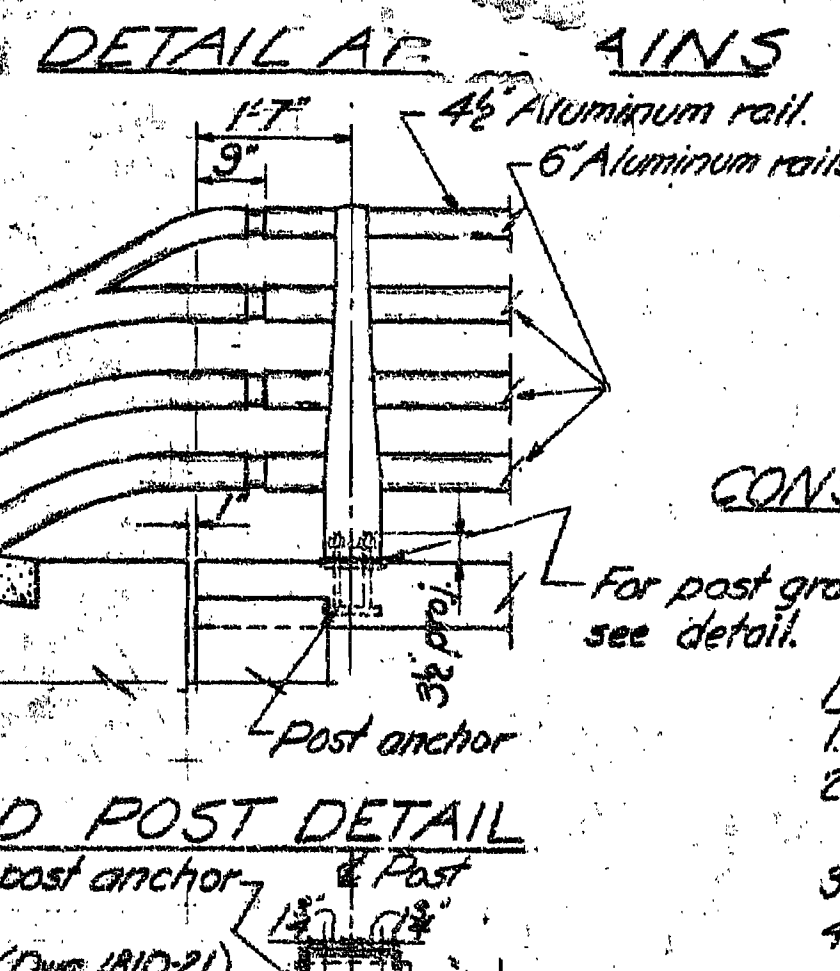
SECTION A-A



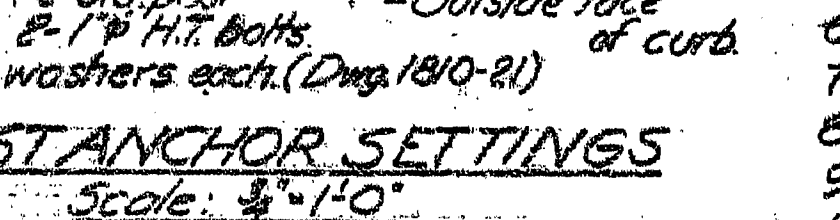
POST GROUTING DETAIL
Scale: 1/2" = 1'-0"



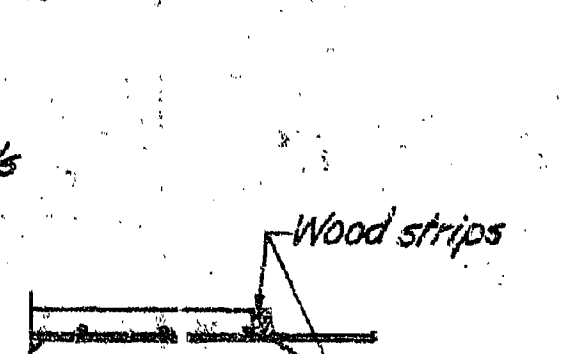
DETAIL X



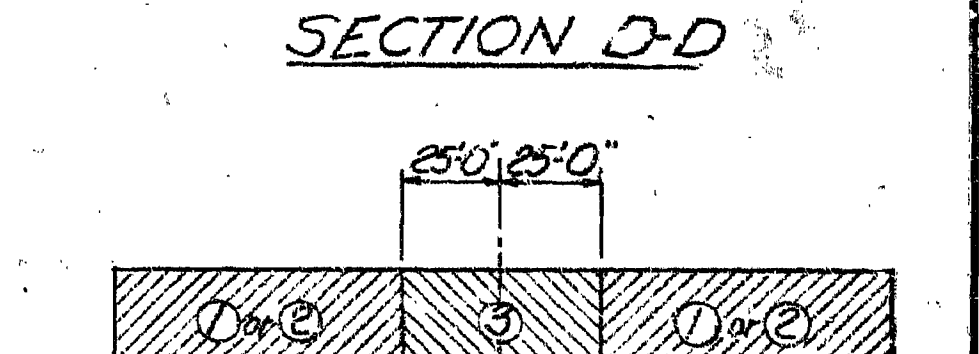
END POST DETAIL



POST ANCHOR SETTINGS
Scale: 3/4" = 1'-0"



CONSTRUCTION JOINT
Scale: 1/2" = 1'-0"



CONCRETE PLACING SEQUENCE DIAGRAM
Not to scale

- NOTES:**
- All concrete to be Class 'A'.
 - Curbs and sidewalk to be formed and concrete placed after roadway slab is set.
 - Curbs and sidewalk may be placed in any sequence to suit contractor.
 - Screeds to be set to provide the required highway vertical alignment which will be provided by the Dept. of Highways prior to construction.
 - Roadway slab must be placed in sequence shown in diagram. The cold joints shall be treated with a bonding compound.
 - All exposed edges to have 1/2" chamfer unless otherwise noted.
 - All reinforcing steel to be intermediate grade.
 - Reinforcing steel to have 1" cover except where noted.
 - Lap of bars for splices to be 40 x d. Splices to be staggered.
 - Swab underside of posts and shims with an alkali resistant bituminous paint.

ESTIMATED QUANTITIES
(including approach curbs)

Formwork	Reinf. Steel	Concrete
8600.0 sq ft	70,500 lbs.	226.0 cu yds.

REVISIONS

B		
C		
A	As Built - no revisions	KLM H-175
	Styrofoam removed - Sect. D-D	PB H-175

BRITISH COLUMBIA DEPARTMENT OF HIGHWAYS
BRIDGE ENGINEERING BRANCH

NEW DENVER DISTRICT
VERNON SLOCAN HIGHWAY
NEW DENVER BRIDGE
DECK DETAILS

APPROVED: [Signature]
SCALE: 1/2" = 1'-0" AND AS NOTED

DRAWN: [Signature] DRAWING No. [Blank]
CHECKED: [Signature] 789-15 B

CANCEL PRINTS BEARING EARLIER LETTER A

168874