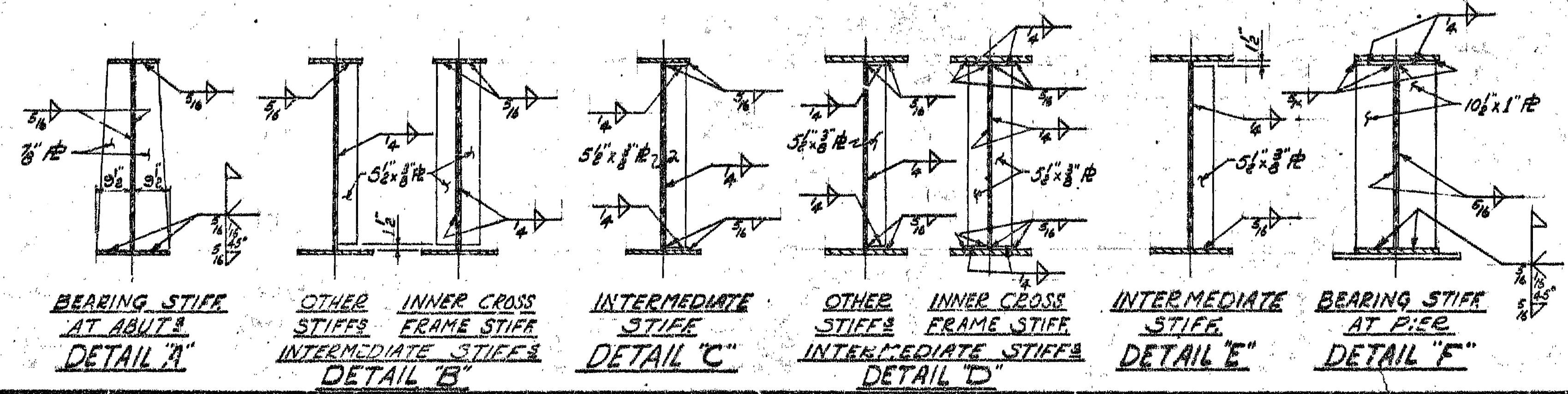


- NOTES:-**
- 1- Specification: A.A.S.H.O. (1969).
  - 2- Loading: H25-S20.
  - 3- Steelwork to conform to:
    - (a) Girder web, flanges and splice plates to be C.S.A. G 40.8 Grade B.
    - (b) Shear connector studs to be A.S.T.M. spec. 108 grade designation 1020;
    - (c) Remaining steel to be A.S.T.M. A 36.
  - 4- Open holes 1 1/2" φ except as noted.
  - 5- Field connections: 3/4" H.T. bolts A 325 except as noted.
  - 6- Paint all steelwork one shop coat red lead Alkyd/Oil paint designation D.O.H. A-2 except facing surfaces and as noted. Surfaces inaccessible after erection shall be given two coats of field paint in accordance with the Dept. of Highways General Specifications Section 216-11.

FOR AS BUILT DETAILS  
SEE SHOP DRAWING

168872



Estimated weight of steelwork, including girders, cross frames, sole plates & drains = 232,200 lbs

NO.	REVISIONS

BRITISH COLUMBIA DEPARTMENT OF HIGHWAYS  
BRIDGE ENGINEERING BRANCH

NEW DENVER DISTRICT  
VERNON SLOCAN HIGHWAY  
NEW DENVER BRIDGE  
STEELWORK SHEET NO. 1

APPROVED: [Signature] BRIDGE ENGINEER  
DRAWN: [Signature] M.E.P.  
CHECKED: [Signature] C.E.P.

SCALE: 1/2" = 1'-0" AND AS NOTED  
DRAWING NO. 789-11  
CANCEL PRINTS BEARING EARLIER LETTERS.