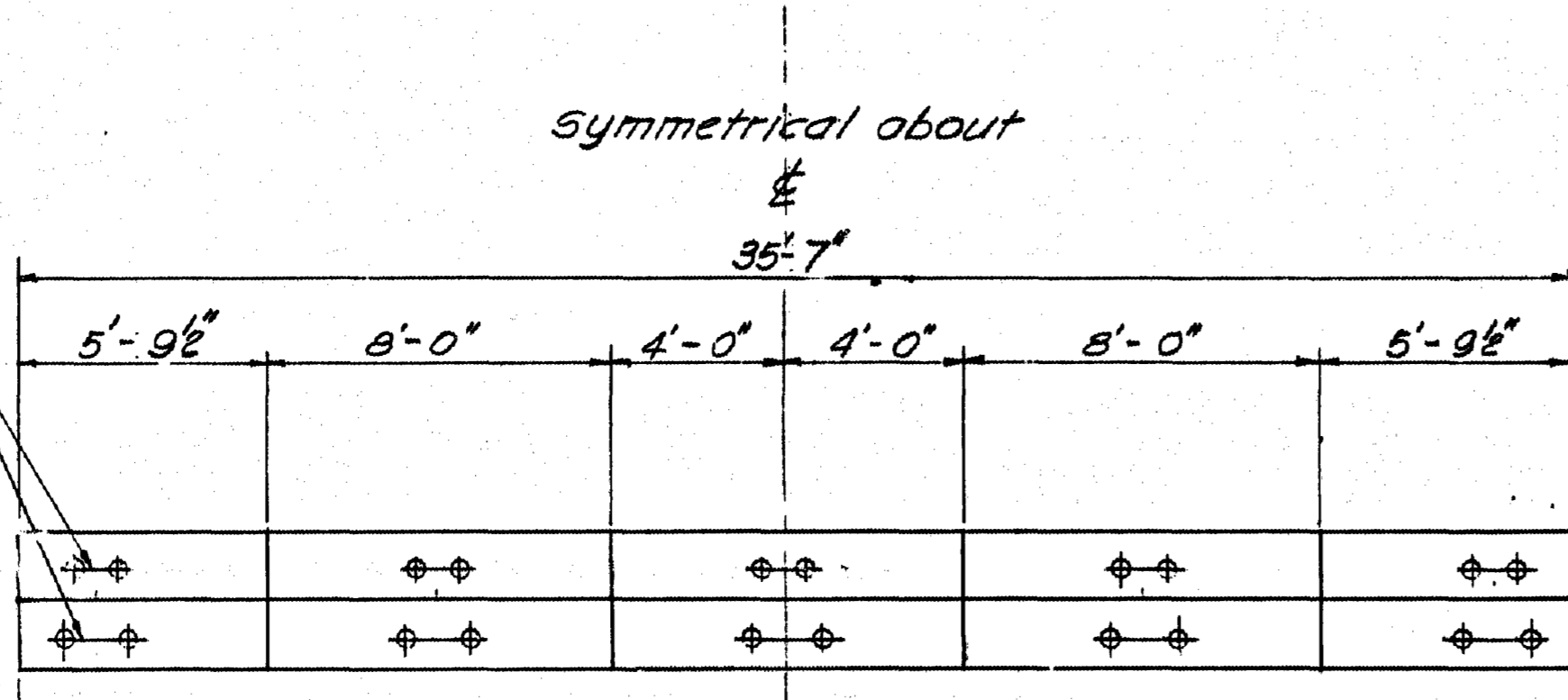
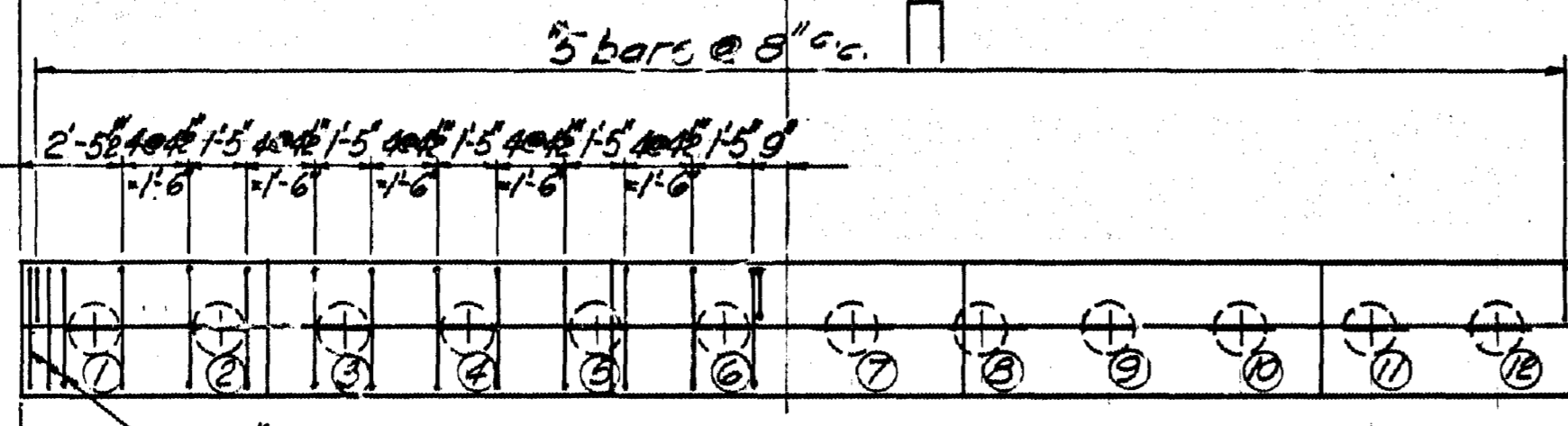


3" Holes x 1'-0" deep (Seal with wooden plug to exclude water) for 1" dowels x 1'-6" lg.
For location see "General Arrangement" Dwg. No 2542-3

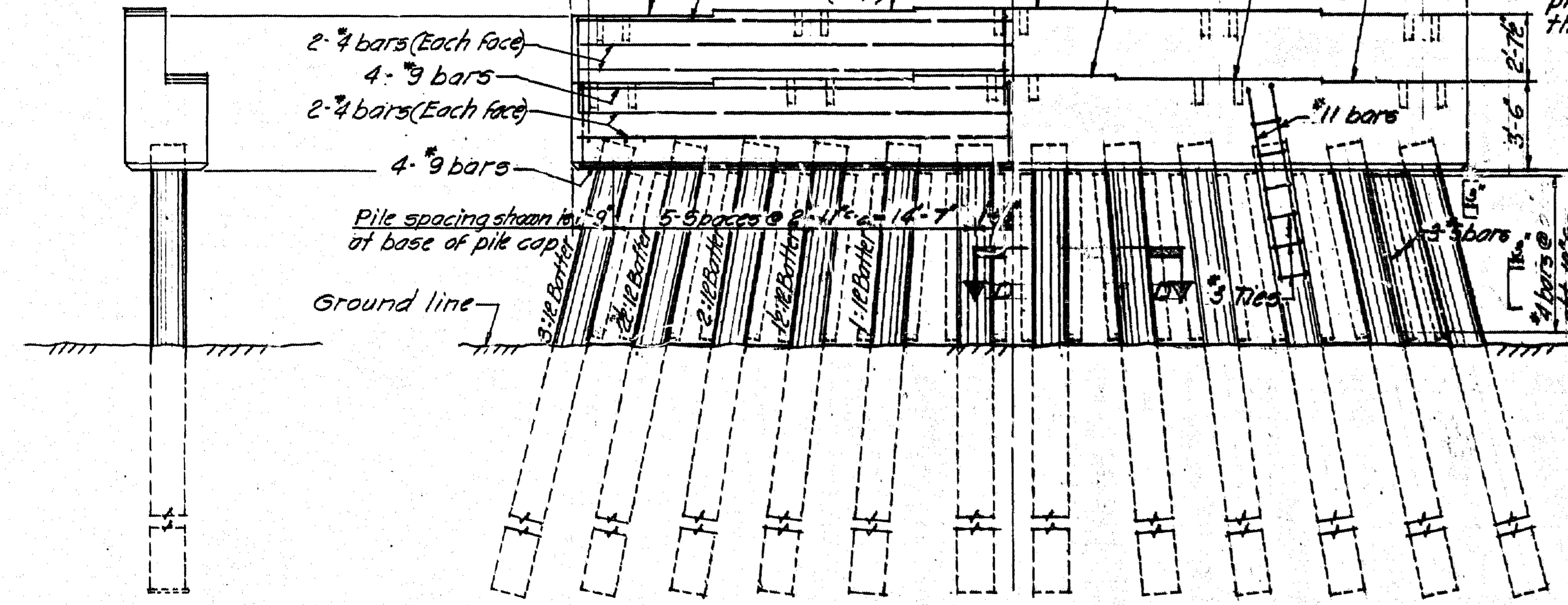
Note: Care to be taken in placing reinforcing to avoid 3" dowel holes.



PLAN



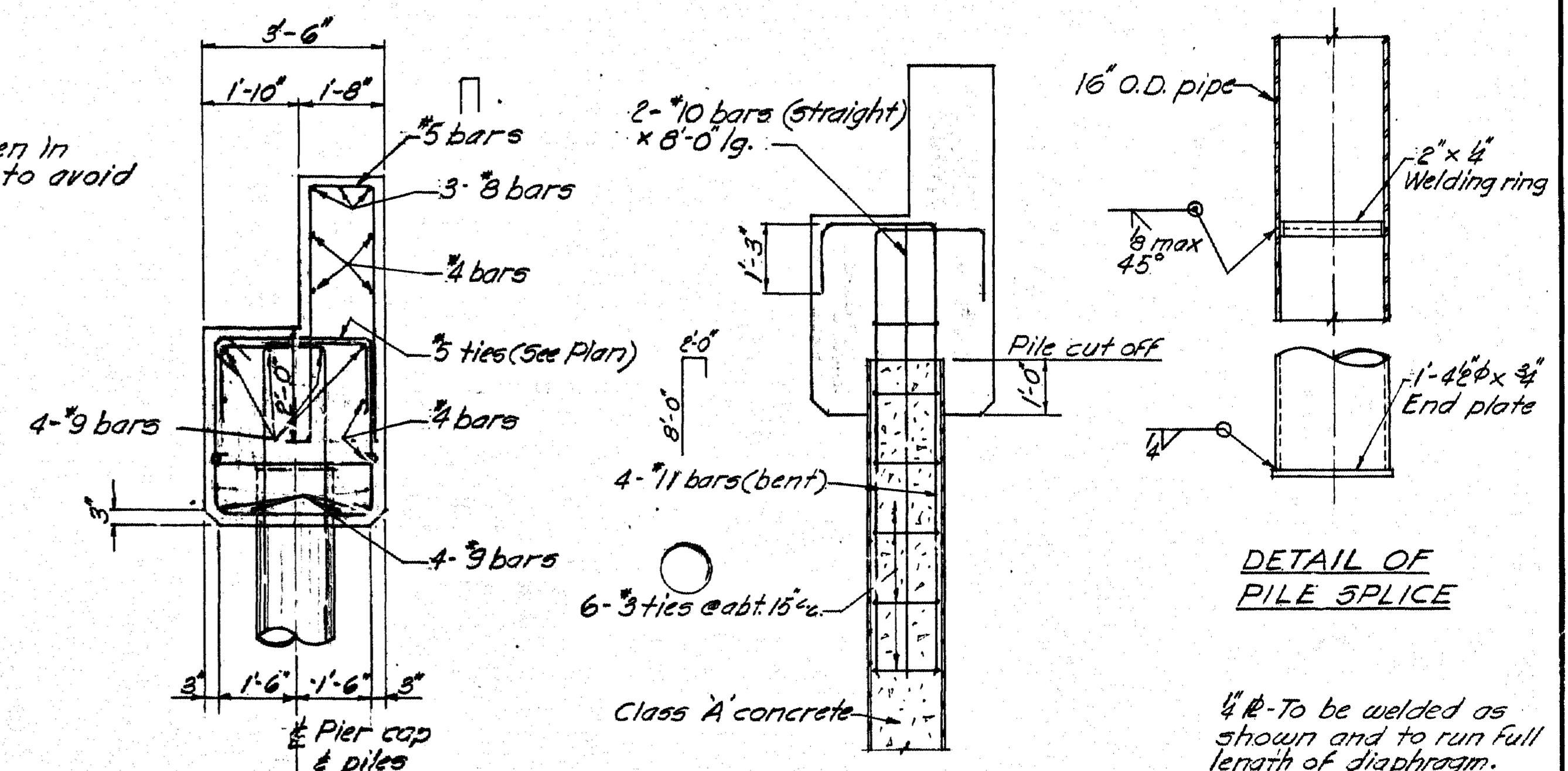
PILE PLAN



ELEVATION

Pier No 1 - Looking South
Pier No 2 - Looking North (Similar except as noted)

TABLE OF ELEVATIONS						
	A	B	C	D	E	F
Pier No 1	2196.49	2196.66	2196.82	2194.20	2194.03	2193.86
Pier No 2	2197.19	2197.36	2197.53	2194.89	2194.73	2194.56

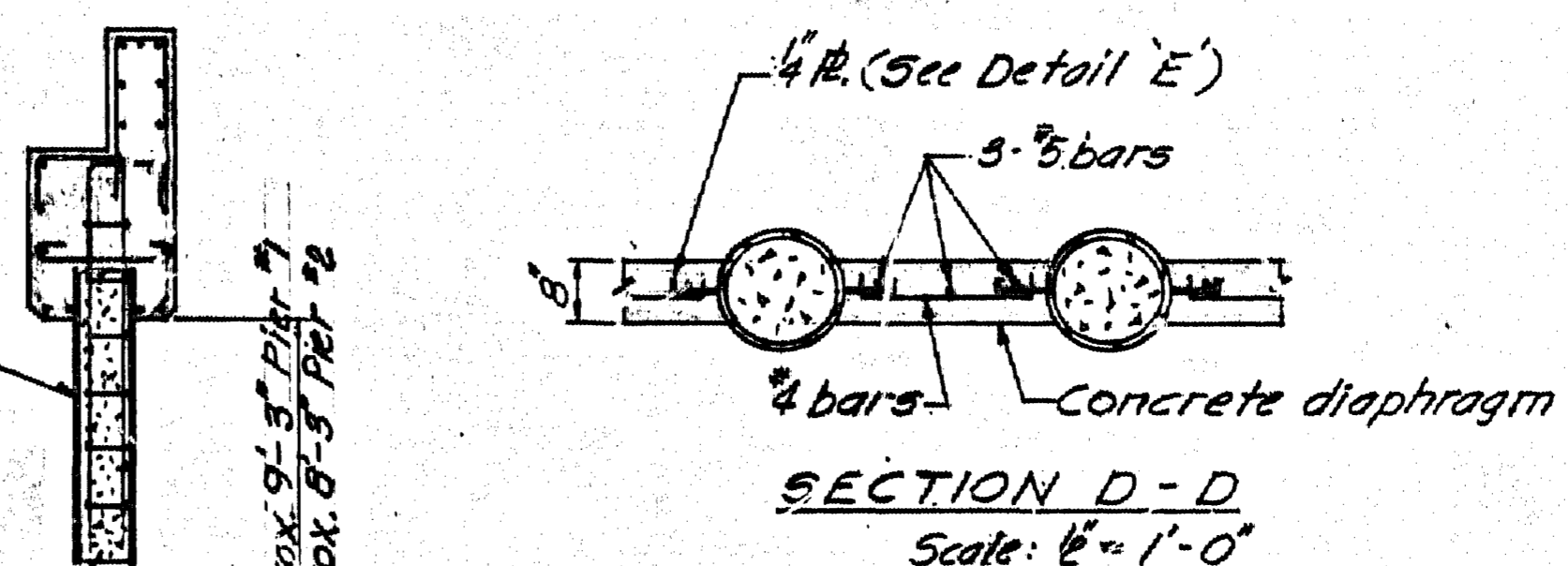


SECTION B-B

SECTION C-C

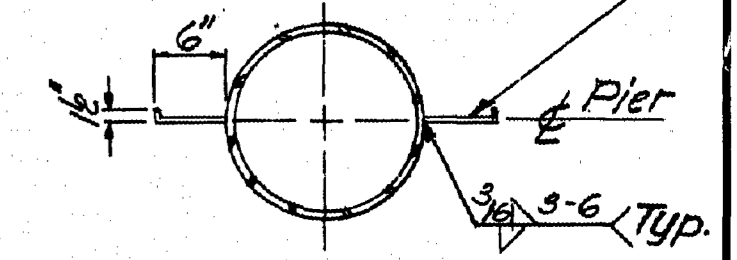
DETAIL OF PILE SPLICE

1/2" to be welded as shown and to run full length of diaphragm. Provide 3" cover top & btm.



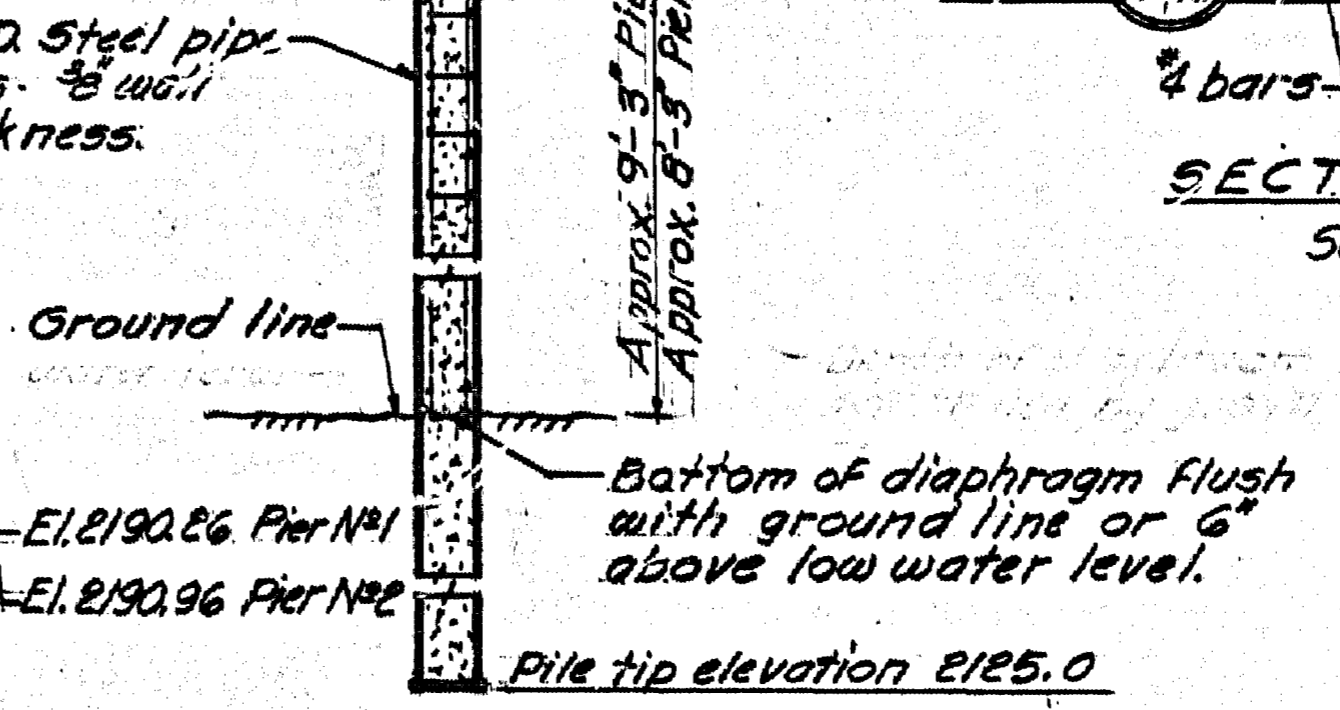
SECTION D-D

Scale: 1/2" = 1'-0"



DETAIL E'

Scale: 3/4" = 1'-0"



SECTION A-A

- Notes:
1. Concrete to be Class A throughout.
 2. Exposed edges to be chamfered 1" except where noted.
 3. Reinforcing steel shall conform to C.S.A. Spec. 6.30.12 grade 40. Lap of bars to be 40 x d.
 4. Reinforcing steel to have 2" cover except where noted otherwise.
 5. Piles to have minimum 57-0 penetration.

ESTIMATED QUANTITIES				
	Concrete	Formwork	Reinf. steel	16" O.D. steel pipe piles @ 4' c/c
Pier No 1	62 cu.yds	810 sq.ft.	7,300 lbs	806 lin.ft.
Pier No 2	62 cu.yds	840 sq.ft.	7,300 lbs	814 lin.ft.
Totals	124 cu.yds	1,650 sq.ft.	14,600 lbs	1,620 lin.ft.

GOVERNMENT OF BRITISH COLUMBIA
MINISTRY OF TRANSPORTATION, COMMUNICATION AND HIGHWAYS
BRIDGE ENGINEERING BRANCH

NELSON DISTRICT
SOUTHERN TRANS-PROVINCIAL HIGHWAY
ERIE CREEK BRIDGE
PIERS 149282

REVISIONS	DESCRIPTION	DATE
D		
C		
B	As built	J.E.H. Oct 30
A	Revised & redrawn	J.T.H. May 20

RECOMMENDED	SCALE: 1/4" = 1'-0" And as noted
RECOMMENDED	DRAWN: J.T.H. May 30
RECOMMENDED	CHECKED: J.E.S. May 19
RECOMMENDED	APPROVED: M.G. Elston
RECOMMENDED	DRAWING No. 2542-51B